

**Final Restoration Plan  
Peregrine  
NU**

**DIAMONDEX RESOURCES LTD.**

May 2009

## **Introduction**

Diamondex conducted field exploration programs on the Peregrine property over several years as follows:

### **Spring 2002**

Between 26 February and 3 April 2002 a 8,321 line-km airborne geophysical survey was completed over the Peregrine property.

### **Summer 2002**

Between 26 July and 12 August 2002, 509 till samples (~25 kg each) were collected, and 37 airborne geophysical anomalies were ground investigated. During 7-12 August 2002, a quaternary mapping program was completed by Terrain Analysis & Mapping Services Ltd.

### **Summer 2003**

Between 23 July and 4 August 2003, 252 till samples (~25 kg each) were collected and 50 airborne geophysical anomalies were ground investigated.

### **Summer 2004**

Between 21 and 24 August 2004, 93 till samples (~25 kg each) were collected.

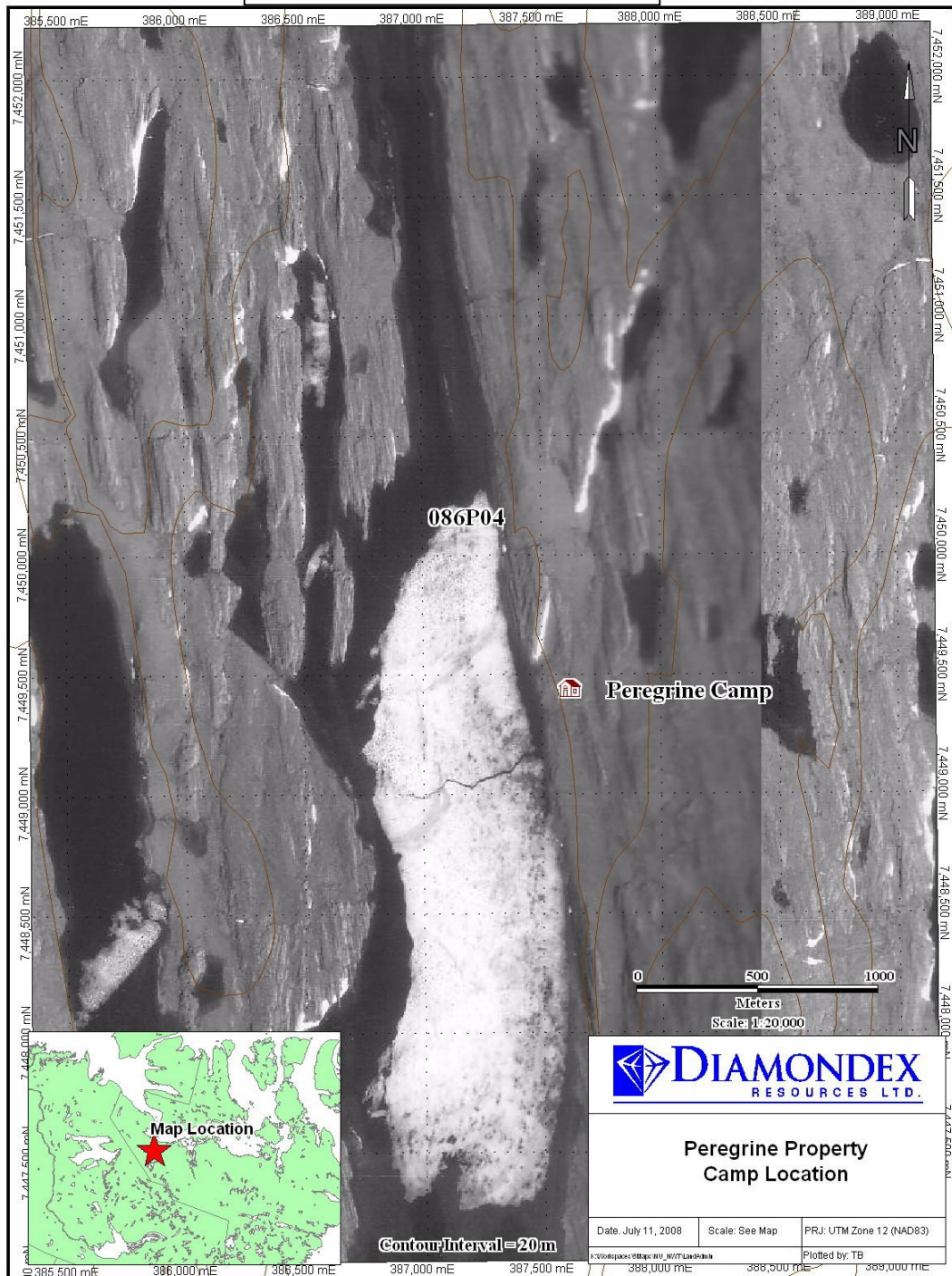
## **Field Camp Location**

The *Peregrine Camp* was a temporary camp site, and is located at 67°8'N and 113°36'W. This camp site was used during both the 2002 and 2003 Peregrine exploration programs. The camp was assembled and disassembled at the start and end of each of the field programs, with only tent floors and minor fuel (used in the maintenance of the camp) remaining on site at the end of exploration program.

## **Property Cleanup and Reclamation**

The camp site has been entirely cleaned up by Discovery Mining Services in late 2008. There are no materials left on site and all fuel and all empty drums have been removed. Included below are photos of the camp in the original and restored condition.

## Peregrine Location Map





Camp on just before cleanup



Camp after cleanup

