

TIMING WINDOWS

Fisheries and Oceans Canada Nunavut Operational Statement

Version 3.0

NUNAVUT IN-WATER CONSTRUCTION TIMING WINDOWS FOR THE PROTECTION OF FISH AND FISH HABITAT

Restricted activity timing windows have been identified for Nunavut lakes, rivers and streams to protect fish during spawning and incubation periods when spawning fish, eggs and fry are vulnerable to disturbance or sediment. During these periods, no in-water or shoreline work is allowed except under site-or project-specific review and with the implementation of protective measures. Restricted activity periods are determined on a case by case basis according to the species of fish in the water body, whether those fish spawn in the spring, summer or fall, and where the water body is located.

Timing windows are just one of many measures used to protect fish and fish habitat when carrying out a work or undertaking in or around water. Be sure to follow all of the measures outlined in the Operational Statements to avoid negative impacts to fish habitat.

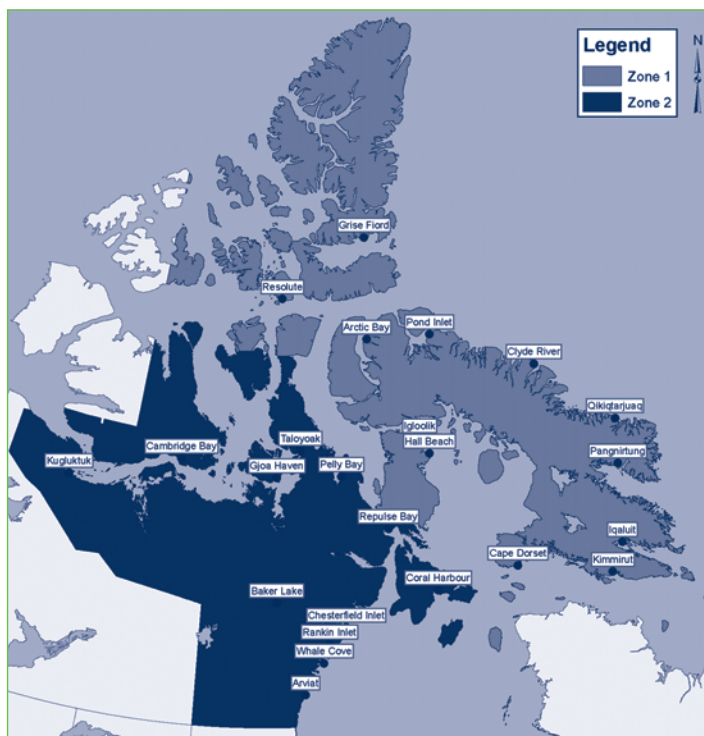


Figure 1:
Fish Timing Zones for Nunavut.

How To Determine Timing Windows

- | | |
|--|---|
| <p>1. Determine if the water body is in Zone 1 or 2 according to Figure 1.</p> | <p>and fall spawning fish are present, or if it is unknown what species are in the water body, both timing windows should be combined to adequately protect all species.</p> |
| <p>2. If the water body is in Zone 2, determine the fish species living in the water body where you wish to do work. Consult with local sources such as hunter and trapper organizations (HTO), wildlife officers, or contact Fisheries and Oceans Canada (DFO).</p> | |
| <p>3. Determine whether the fish living in the water body spawn in the spring or fall according to Table 1. Where both spring</p> | <p>4. Using Table 2 below determine the in-water work timing restrictions according to the location of a water body (Zone 1 or 2) and whether the species in the water body spawn in the spring or fall. During these periods, in-water or shoreline work (below the ordinary high water mark) is not permitted without site or project-specific review by DFO.</p> |

Table 1:
General Range of Spawning Times in Nunavut.

Species	Spawning Period (Spring/Fall)
Arctic Char	Fall
Lake Trout	Fall
Whitefish ¹	Fall
Arctic Grayling	Spring
Northern Pike	Spring

¹ Includes Broad, Lake and Round Whitefish

Table 2:
Timing Window when In-Water Activities are NOT permitted, by Zone and Spawning Period.

Zone	Spring Spawning Species	Fall Spawning Species	Spring & Fall Spawning, or Unknown Species
1	N/A	September 1 – June 30	N/A
2	May 1 - July 15	August 15 – June 30	August 15 – July 15

FISHERIES AND OCEANS CANADA OFFICE IN NUNAVUT

Fisheries and Oceans Canada – Eastern Arctic Area

P.O. Box 358

Iqaluit, Nunavut X0A 0H0

Tel.: (867) 979-8000

Fax: (867) 979-8039

Email: nunavuthabitat@dfo-mpo.gc.ca

Aussi disponible en français

http://www.dfo-mpo.gc.ca/oceans-habitat/habitat/modernizing-moderniser/epmp-pmpe/index_f.asp