

KEYPLAN

NOTES:

- 1. TOPOGRAPHY PROVIDED BY TERRAPOINT CANADA INC.
- 2. COORDINATE GRID IS SHOWN IN UTM (NAD83) ZONE 17 AND IS IN METRES.
- 3. CONTOURS ARE IN METRES. CONTOUR INTERVAL IS 1.5 METRES.
- 4. AS-CONSTRUCTED INFORMATION PROVIDED BY GENIVAR IN 2008.
- 5. FOR RAIL PHASE OVERALL GA SEE DWG. H340960-4000-00-014-0001

LEGEND:

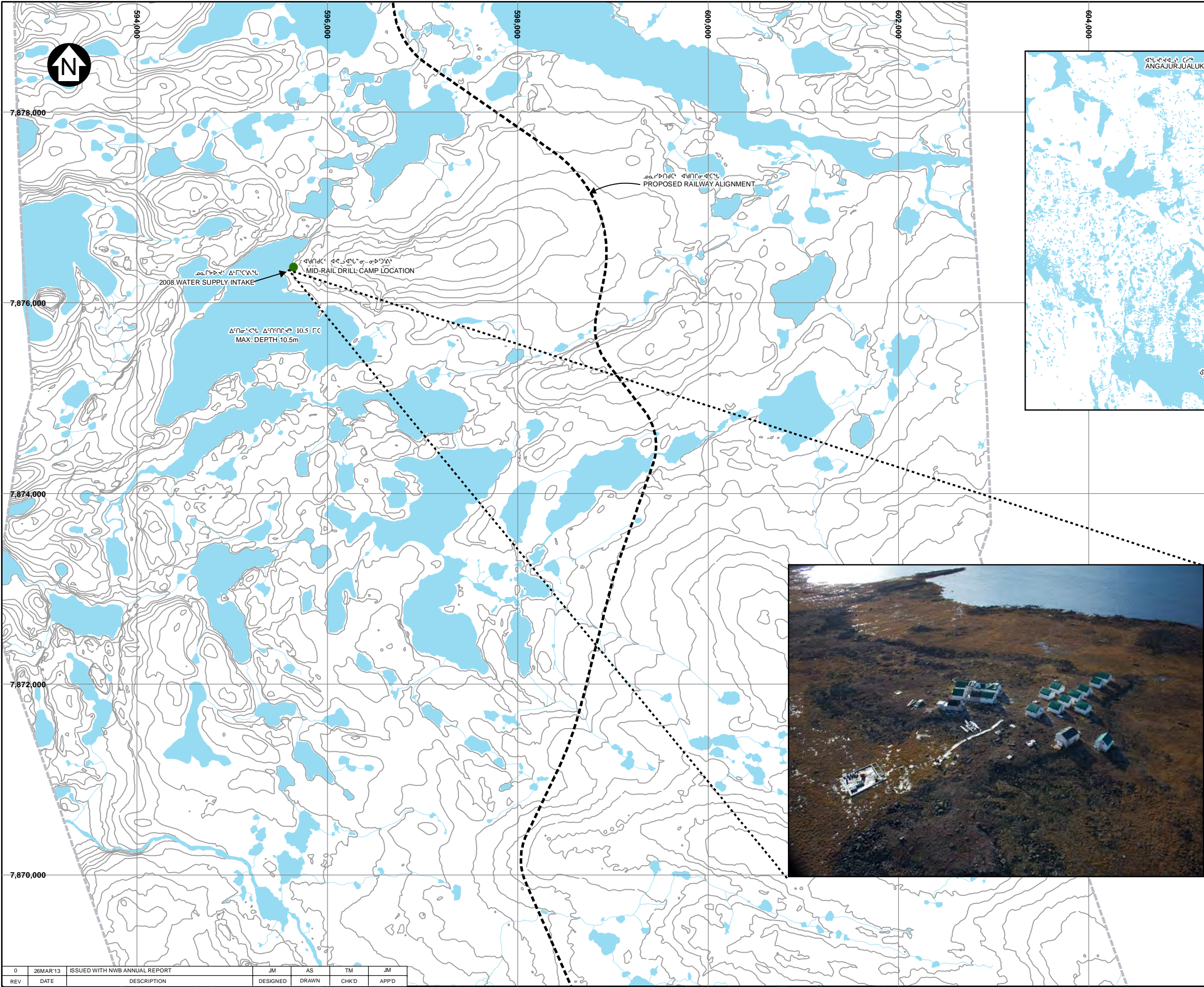
	WATER		EARLY WORKS (MAY TO JULY 2013) UNDER NEW TYPE 'B' WATER LICENSE (IN PROCESS)		RIVER/STREAM/DRAINAGE
	PROPOSED QUARRY		CONSTRUCTION PHASE UNDER FUTURE TYPE 'A' WATER LICENSE (JULY TO DECEMBER 2013)		PROJECT DEVELOPMENT AREA
	LAYDOWN AREA (CONSTRUCTION PHASE)		EXISTING BORROW AREA (IOL COMMERCIAL LEASE)		BAFFINLAND'S COMMERCIAL LEASE ON INUIT OWNED LAND
	ADVANCED EXPLORATION UNDER EXISTING TYPE 'B' WATER LICENSE		EXISTING ROCK QUARRY (IOL COMMERCIAL LEASE)		ROAD

MARY RIVER PROJECT

MINE SITE

ENHANCED LAYOUT

SCALE 1:5000 OR AS NOTED	DWG. NO. H349000-4000-00-015-0003	REV. A
--------------------------------	--------------------------------------	-----------



ᐃᑦᑦᑦ

LEGEND:

- ᐃᑦᑦᑦ WATER
- ᐃᑦᑦᑦ/ᐃᑦᑦᑦ/ᐃᑦᑦᑦ RIVER/STREAM/DRAINAGE
- ᐃᑦᑦᑦᐃᑦᑦᑦ ᐃᑦᑦᑦᐃᑦᑦᑦ PROPOSED RAIL ALIGNMENT
- ᐃᑦᑦᑦᑦᑦᑦ ᑕᑦᑦᑦᑦ EXISTING CAMP (CAMP NOT OCCUPIED DURING 2012)

NOTES:

- TOPOGRAPHY PROVIDED BY EAGLE MAPPING (2005).
ᐃᑦᑦᑦᐃᑦᑦᑦ EAGLE MAPPING (2005)
- COORDINATE GRID IS SHOWN IN UTM (NAD83) ZONE 17 AND IS IN METRES.
ᐃᑦᑦᑦᑦ ᐃᑦᑦᑦᑦᑦᑦ ᑕᑦᑦᑦᑦ UTM (NAD83) ZONE 17
- CONTOUR INTERVAL IS IN METRES. CONTOUR INTERVAL IS 2.5 METRES.
ᐃᑦᑦᑦᑦᑦ ᑕᑦᑦᑦᑦᑦ ᐃᑦᑦᑦᑦᑦᑦ 2.5 ᑕᑦᑦᑦ
- PROPOSED RAIL ALIGNMENT PROVIDED BY CANARAIL CONSULTANTS INC.
ᐃᑦᑦᑦᐃᑦᑦᑦ ᐃᑦᑦᑦᑦᑦ CANARAIL CONSULTANTS INC

ᐃᑦᑦᑦ 500 250 0 500 1,000 1,500 2,000 ᑕᑦᑦ

SCALE

Baffinland

ᐃᑦᑦᑦ ᐃᑦᑦᑦᑦᑦᑦ MARY RIVER PROJECT

ᑕᑦᑦᑦ ᐃᑦᑦᑦᑦᑦᑦ ᐃᑦᑦᑦᑦ ᐃᑦᑦᑦᑦᑦᑦ ᐃᑦᑦᑦᑦᑦᑦᑦ

EXISTING SITE LAYOUT AT MID RAIL CAMP

Knight Piésold

CONSULTING

P/A NO.
NB102-181/33

REF NO.
NB13-00093

ᐃᑦᑦᑦᑦᑦᑦᑦᑦᑦᑦ

FIGURE 1.6

REV
0

SAVED: I:\1020018133\ANGIS\FigB04_10.mxd; Mar 27, 2013 10:26 AM;

0	26MAR'13	ISSUED WITH NWB ANNUAL REPORT	JM	AS	TM	JM
REV	DATE	DESCRIPTION	DESIGNED	DRAWN	CHK'D	APP'D