

Appendix H

Spill Response Element Site Maps

H.1 Spill Response Elements Site Maps

The following drawings provide a site maps that emphasize the spill response elements of the site. The drawings identify spill response equipment, fuel storage areas, water bodies and infrastructure. The following figures are as follows:

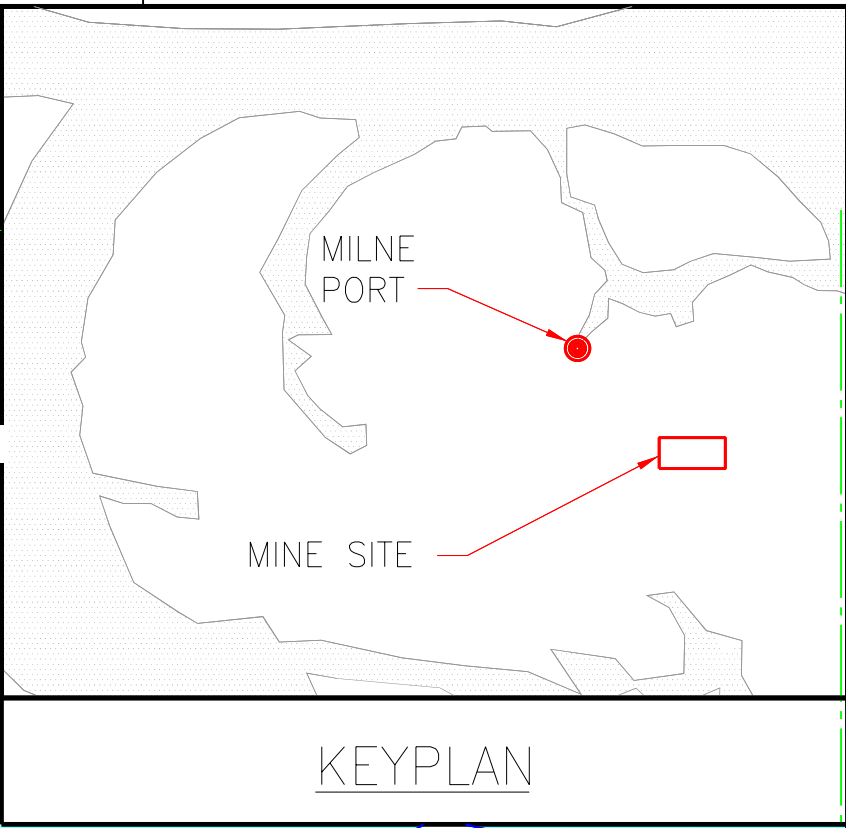
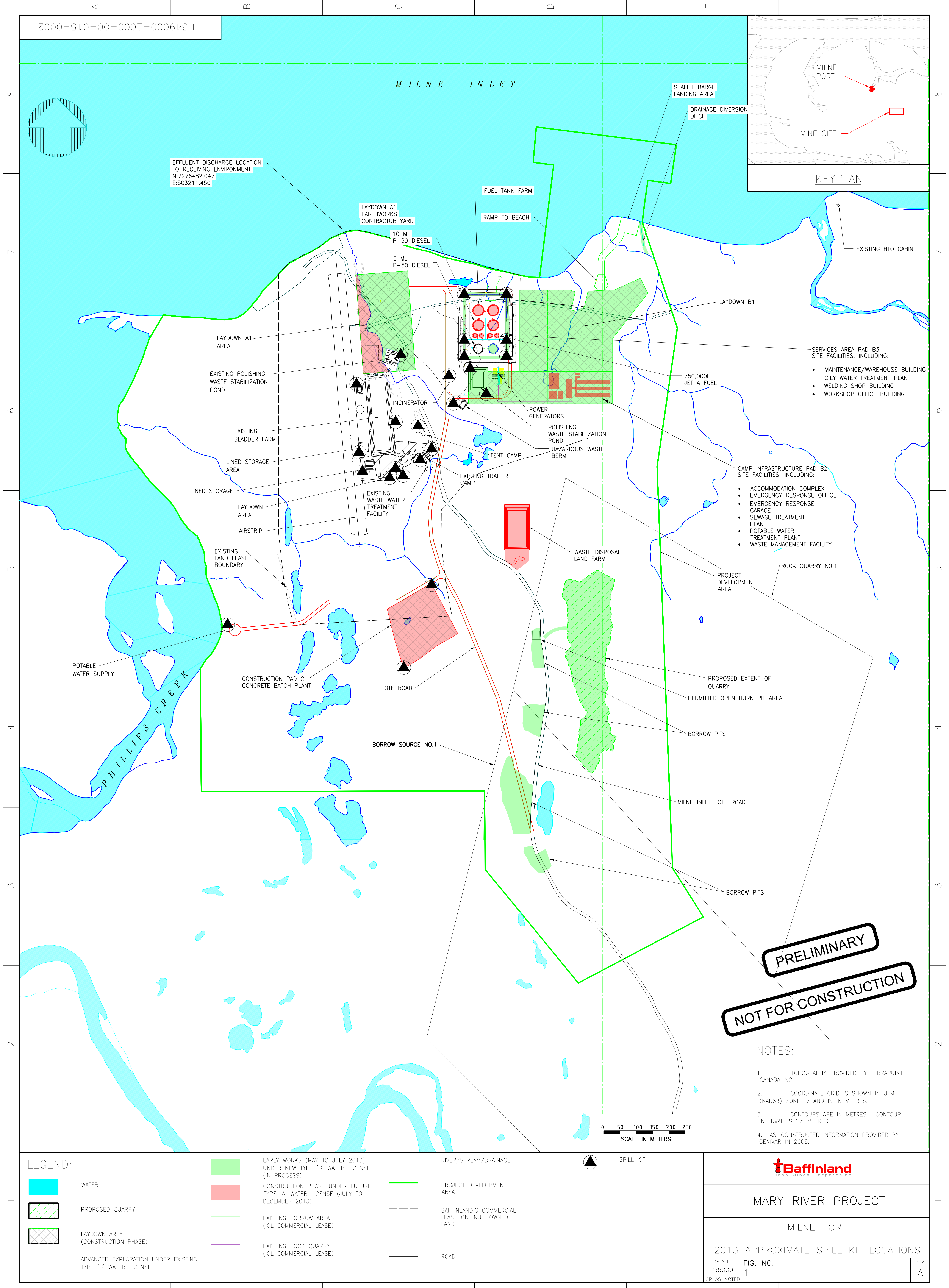
Figure 1) Milne 2013 Approximate Spill Kit Locations

Figure 2) Mine Site Existing Approximate Spill Kit Locations

Figure 3) Mine Site 2013 Approximate Spill Kit Locations

Figure 4) Mid-Rail Camp Layout Approximate Spill Kit Locations

Figure 5) Steensby Camp Layout Approximate Spill Kit Location



EFFLUENT DISCHARGE LOCATION
TO RECEIVING ENVIRONMENT
N:7976482.047
E:503211.450

LAYDOWN A1
EARTHWORKS
CONTRACTOR YARD

FUEL TANK FARM
RAMP TO BEACH

SEALIFT BARGE
LANDING AREA
DRAINAGE DIVERSION
DITCH

EXISTING HTO CABIN

LAYDOWN A1
AREA
EXISTING POLISHING
WASTE STABILIZATION
POND

10 ML
P-50 DIESEL
5 ML
P-50 DIESEL

SERVICES AREA PAD B3
SITE FACILITIES, INCLUDING:
• MAINTENANCE/WAREHOUSE BUILDING
• OILY WATER TREATMENT PLANT
• WELDING SHOP BUILDING
• WORKSHOP OFFICE BUILDING

750,000L
JET A FUEL

EXISTING BLADDER FARM
LINED STORAGE
AREA
LINED STORAGE
LAYDOWN
AREA
AIRSTRIIP

INCINERATOR
EXISTING WASTE
WATER TREATMENT
FACILITY

POWER GENERATORS
POLISHING WASTE STABILIZATION
POND
HAZARDOUS WASTE
BERM

CAMP INFRASTRUCTURE PAD B2
SITE FACILITIES, INCLUDING:
• ACCOMMODATION COMPLEX
• EMERGENCY RESPONSE OFFICE
• EMERGENCY RESPONSE
GARAGE
• SEWAGE TREATMENT
PLANT
• POTABLE WATER
TREATMENT PLANT
• WASTE MANAGEMENT FACILITY

ROCK QUARRY NO.1

POTABLE
WATER SUPPLY

CONSTRUCTION PAD C
CONCRETE BATCH PLANT

TOTE ROAD

BORROW SOURCE NO.1

WASTE DISPOSAL
LAND FARM

PROJECT DEVELOPMENT
AREA
PROPOSED EXTENT OF
QUARRY
PERMITTED OPEN BURN PIT AREA
BORROW PITS

MILNE INLET TOTE ROAD

BORROW PITS

PRELIMINARY
NOT FOR CONSTRUCTION

NOTES:

1. TOPOGRAPHY PROVIDED BY TERRAPOINT CANADA INC.
2. COORDINATE GRID IS SHOWN IN UTM (NAD83) ZONE 17 AND IS IN METRES.
3. CONTOURS ARE IN METRES. CONTOUR INTERVAL IS 1.5 METRES.
4. AS-CONSTRUCTED INFORMATION PROVIDED BY GENIVAR IN 2008.

0 50 100 150 200 250
SCALE IN METERS

LEGEND:

- | | | | | | |
|--|---|--|--|--|---|
| | WATER | | EARLY WORKS (MAY TO JULY 2013)
UNDER NEW TYPE 'B' WATER LICENSE
(IN PROCESS) | | RIVER/STREAM/DRAINAGE |
| | PROPOSED QUARRY | | CONSTRUCTION PHASE UNDER FUTURE
TYPE 'A' WATER LICENSE (JULY TO
DECEMBER 2013) | | PROJECT DEVELOPMENT
AREA |
| | LAYDOWN AREA
(CONSTRUCTION PHASE) | | EXISTING BORROW AREA
(IOL COMMERCIAL LEASE) | | BAFFINLAND'S COMMERCIAL
LEASE ON INUIT OWNED
LAND |
| | ADVANCED EXPLORATION UNDER EXISTING
TYPE 'B' WATER LICENSE | | EXISTING ROCK QUARRY
(IOL COMMERCIAL LEASE) | | ROAD |



MARY RIVER PROJECT

MILNE PORT

2013 APPROXIMATE SPILL KIT LOCATIONS

SCALE 1:5000 OR AS NOTED	FIG. NO. 1	REV. A
--------------------------------	---------------	-----------