

LEGEND:			
	WATER		EARLY WORKS (MAY TO JULY 2013) UNDER NEW TYPE 'B' WATER LICENSE (IN PROCESS)
	PROPOSED QUARRY		CONSTRUCTION PHASE UNDER FUTURE TYPE 'A' WATER LICENSE (JULY TO DECEMBER 2013)
	LAYDOWN AREA (CONSTRUCTION PHASE)		EXISTING BORROW AREA (IOL COMMERCIAL LEASE)
	ADVANCED EXPLORATION UNDER EXISTING TYPE 'B' WATER LICENSE		EXISTING ROCK QUARRY (IOL COMMERCIAL LEASE)
	RIVER/STREAM/DRAINAGE		PROJECT DEVELOPMENT AREA
	PROJECT DEVELOPMENT AREA		BAFFINLAND'S COMMERCIAL LEASE ON INUIT OWNED LAND
	ROAD		

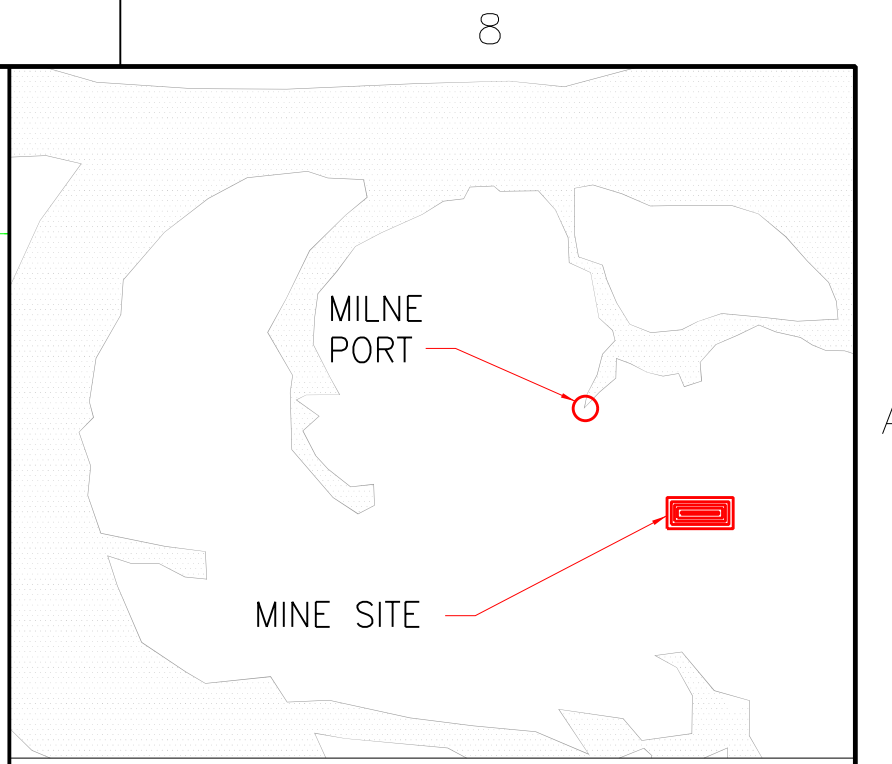
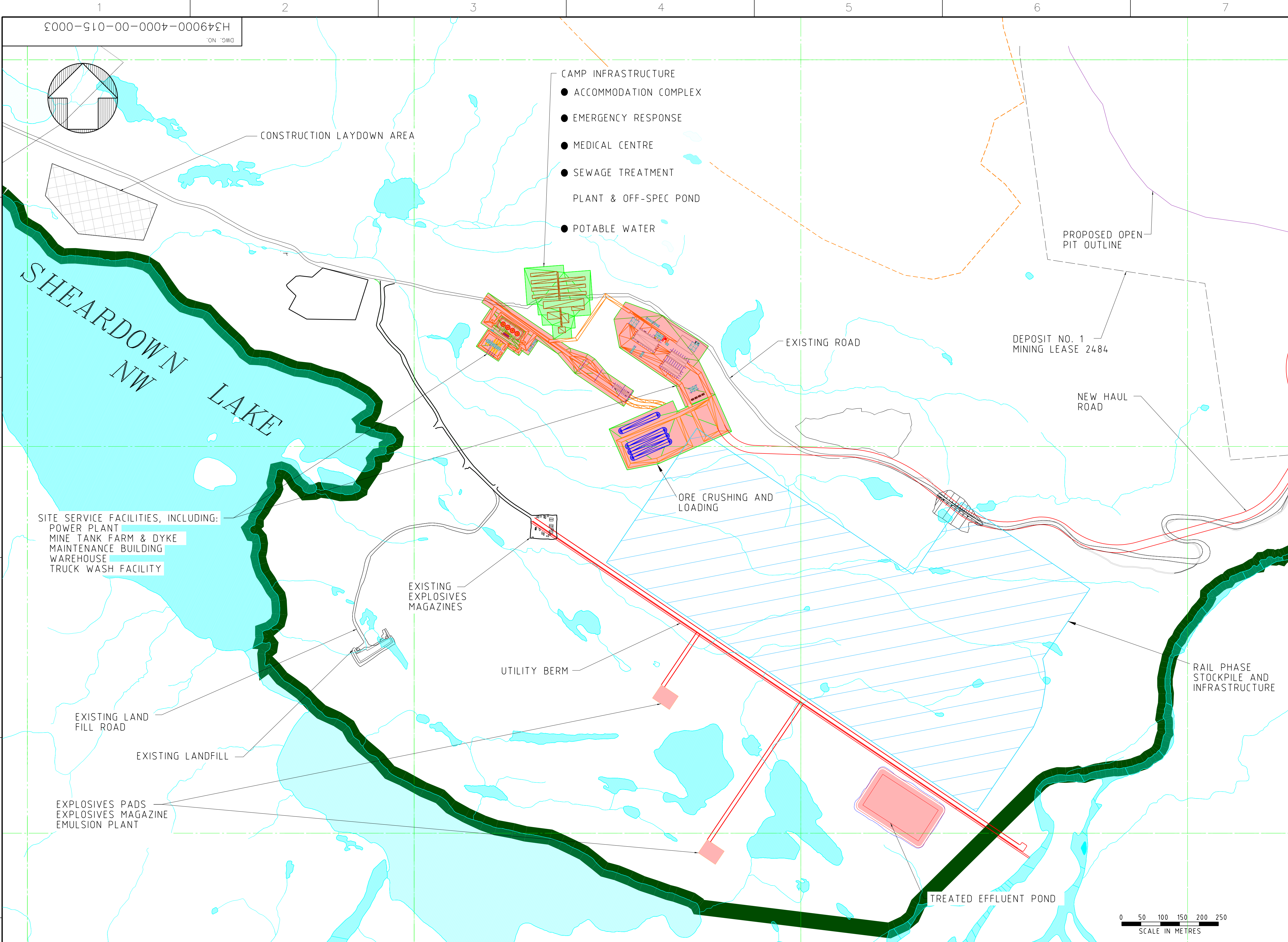
MARY RIVER PROJECT

MINE SITE

SITE LAYOUT

SCALE 1:15000 OR AS NOTED	DWG. NO. H349000-4000-00-015-0002	REV. A
---------------------------------	--------------------------------------	-----------

\\projectwise\jels59970\m88860\H349000-4000-00-015-0002.dgn
26/07/2015 4:57:57 PM
jels59970



KEYPLAN

NOTES:

- 1. TOPOGRAPHY PROVIDED BY TERRAPOINT CANADA INC.
- 2. COORDINATE GRID IS SHOWN IN UTM (NAD83) ZONE 17 AND IS IN METRES.
- 3. CONTOURS ARE IN METRES. CONTOUR INTERVAL IS 1.5 METRES.
- 4. AS-CONSTRUCTED INFORMATION PROVIDED BY GENIVAR IN 2008.
- 5. FOR RAIL PHASE OVERALL GA SEE DWG. H340960-4000-00-014-0001

LEGEND:

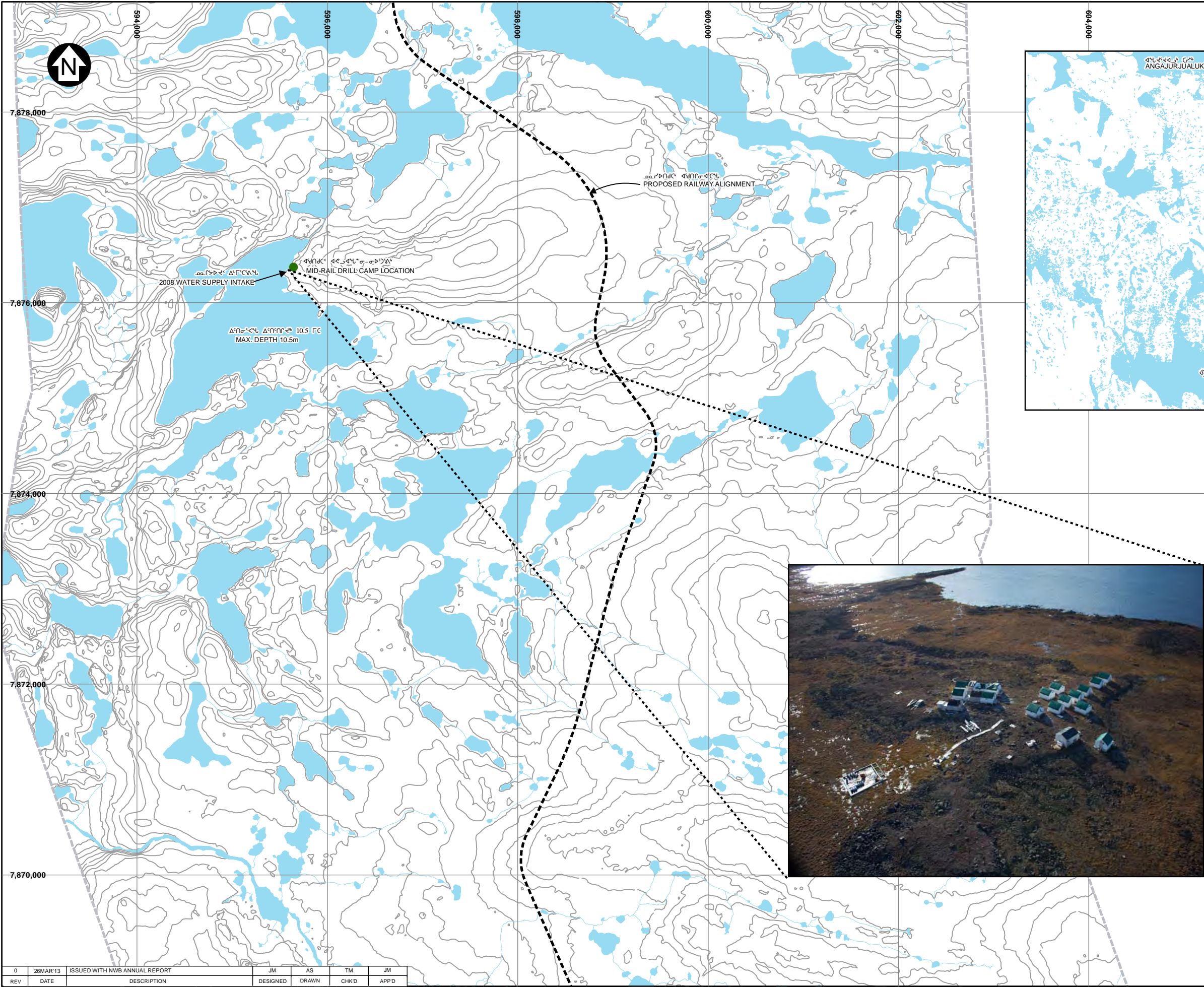
	WATER		EARLY WORKS (MAY TO JULY 2013) UNDER NEW TYPE 'B' WATER LICENSE (IN PROCESS)		RIVER/STREAM/DRAINAGE
	PROPOSED QUARRY		CONSTRUCTION PHASE UNDER FUTURE TYPE 'A' WATER LICENSE (JULY TO DECEMBER 2013)		PROJECT DEVELOPMENT AREA
	LAYDOWN AREA (CONSTRUCTION PHASE)		EXISTING BORROW AREA (IOL COMMERCIAL LEASE)		BAFFINLAND'S COMMERCIAL LEASE ON INUIT OWNED LAND
	ADVANCED EXPLORATION UNDER EXISTING TYPE 'B' WATER LICENSE		EXISTING ROCK QUARRY (IOL COMMERCIAL LEASE)		ROAD

MARY RIVER PROJECT

MINE SITE

ENHANCED LAYOUT

SCALE 1:5000 OR AS NOTED	DWG. NO. H349000-4000-00-015-0003	REV. A
--------------------------------	--------------------------------------	-----------



- ᐃᑦᑎᑦᑎᑦᑎᑦ
- LEGEND:**
- ᐃᑦᑎᑦᑎᑦᑎᑦ WATER
 - ᑭᑦᑎᑦᑎᑦᑎᑦᑎᑦ RIVER/STREAM/DRAINAGE
 - ᐃᑦᑎᑦᑎᑦᑎᑦᑎᑦ PROPOSED RAILWAY ALIGNMENT
 - ᐃᑦᑎᑦᑎᑦᑎᑦᑎᑦ EXISTING CAMP (CAMP NOT OCCUPIED DURING 2012)

- NOTES:**
- TOPOGRAPHY PROVIDED BY EAGLE MAPPING (2005).
ᐃᑦᑎᑦᑎᑦᑎᑦᑎᑦ EAGLE MAPPING (2005)
 - COORDINATE GRID IS SHOWN IN UTM (NAD83) ZONE 17 AND IS IN METRES.
ᐃᑦᑎᑦᑎᑦᑎᑦᑎᑦ UTM (NAD83) ZONE 17
 - CONTOUR INTERVAL IS IN METRES. CONTOUR INTERVAL IS 2.5 METRES.
ᐃᑦᑎᑦᑎᑦᑎᑦᑎᑦ 2.5 ᑦᑎ
 - PROPOSED RAIL ALIGNMENT PROVIDED BY CANARAIL CONSULTANTS INC.
ᐃᑦᑎᑦᑎᑦᑎᑦᑎᑦ CANARAIL CONSULTANTS INC



ᐃᑦᑎᑦᑎᑦᑎᑦᑎᑦ MARY RIVER PROJECT

ᐃᑦᑎᑦᑎᑦᑎᑦᑎᑦ EXISTING SITE LAYOUT AT MID RAIL CAMP

Knight Piésold CONSULTING	P/A NO. NB102-181/33	REF NO. NB13-00093
	ᐃᑦᑎᑦᑎᑦᑎᑦᑎᑦ FIGURE 1.6	REV 0

SAVED: I:\1020018133\ANG (S)\FigB04_10.mxd; Mar 27, 2013 10:26 AM;

0	26MAR'13	ISSUED WITH NWB ANNUAL REPORT	JM	AS	TM	JM
REV	DATE	DESCRIPTION	DESIGNED	DRAWN	CHK'D	APP'D