

Appendix V2-3C

TMAC Presentation Given at the May 2016
Community Meetings



Proposed Future Expansion of The Hope Bay Project

Community Meeting

May 2016

Kitikmeot Region



Beyond Doris North

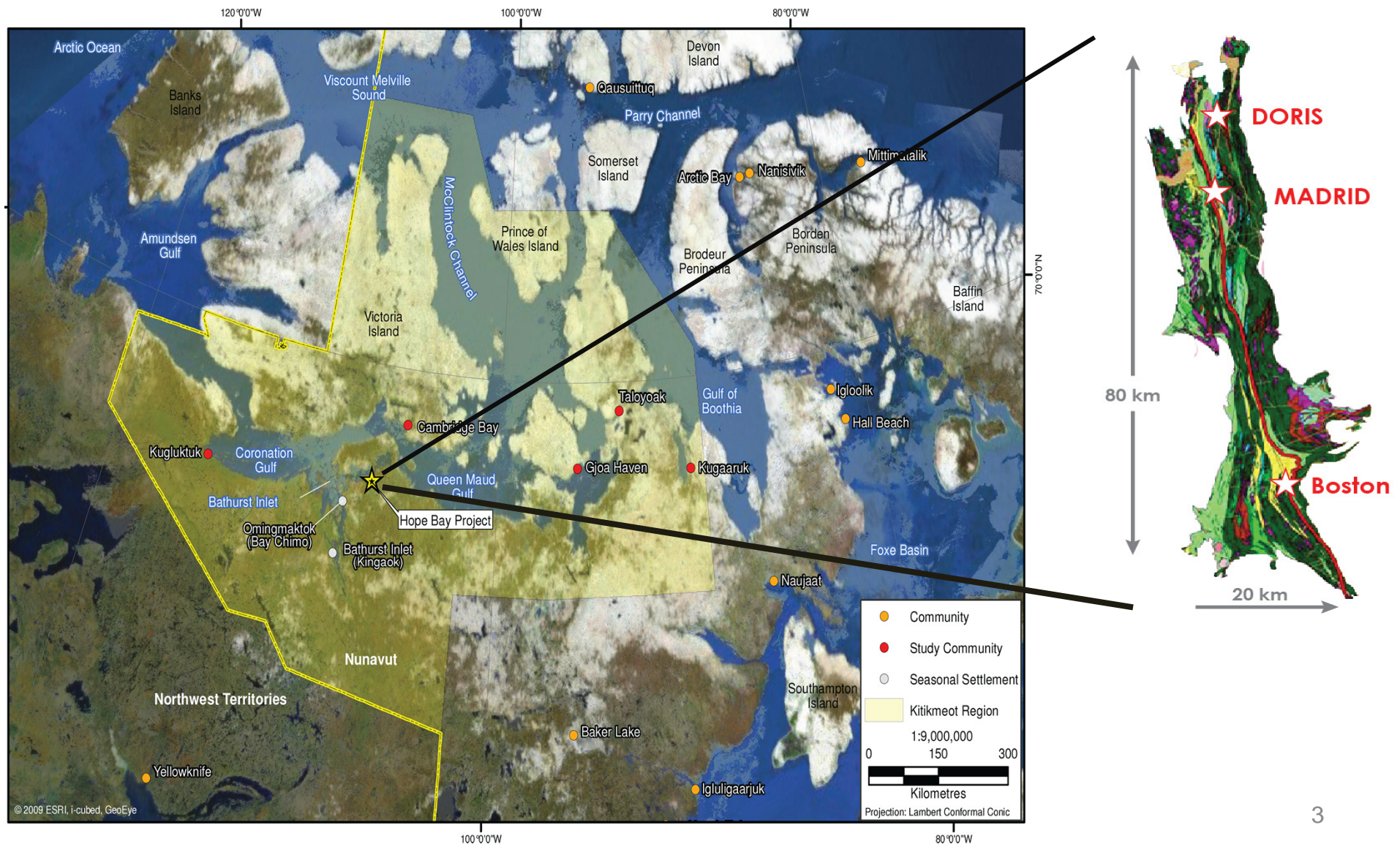


TMAC is a Canadian company with offices in Cambridge Bay, Yellowknife, and Toronto.

- TMAC bought the Hope Bay Project from Newmont in 2013
 - Mining at Doris is underway
 - The gold processing plant will be put into operation this fall and gold bars will be produced by this time next year.
- ❖ We are here to discuss the next Phase of the Hope Bay Project:
The proposal for gold mining south of Doris at **Madrid and Boston**



The Madrid and Boston Gold Deposits?



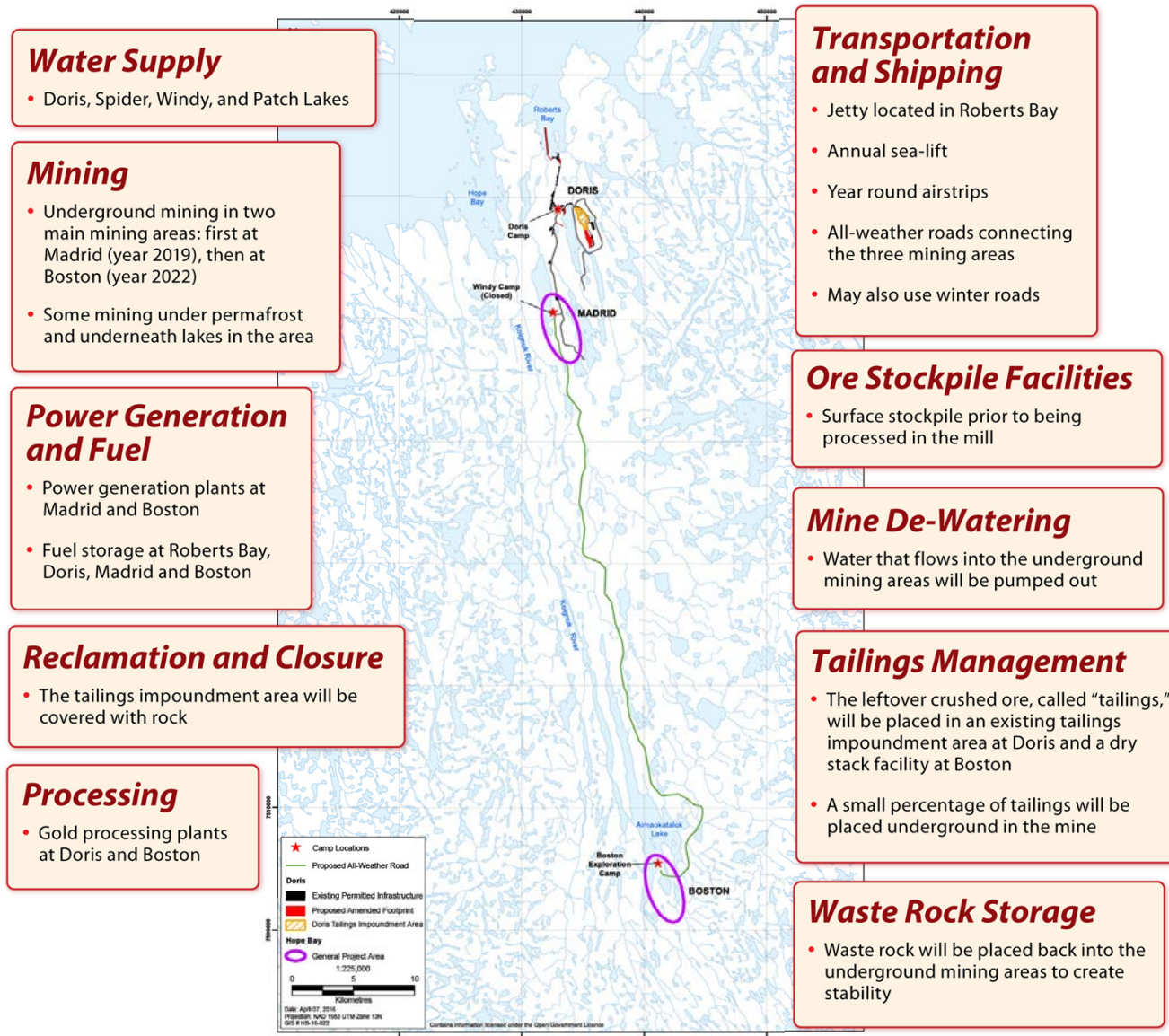
Proposed Gold Mining of Madrid and Boston Areas



Madrid and Boston Highlights

Mining	<ul style="list-style-type: none">• Underground mining with waste rock stored above ground temporarily and then put back into the underground mines
Production Amounts	<ul style="list-style-type: none">• 2,000 tonnes of rock removed per day• 160,000 ounces of gold per year for about 15 years
Gold Production	<ul style="list-style-type: none">• ore processing at Doris and Boston will produce gold bars
Transportation	<ul style="list-style-type: none">• use of existing jetty at Roberts Bay• gold bars flown out to market• all-weather roads connecting Madrid and Boston to Doris and Roberts Bay
Employment	<ul style="list-style-type: none">• fly in-fly out operation from Yellowknife and Kitikmeot• 440 workers during peak operations (for approximately 15 years)
Economic Benefit	<ul style="list-style-type: none">• royalties, mineral taxes and payments of approximately \$400 million over the life of the Hope Bay Project for Canada, Nunavut, KIA and NTI (excluding Doris)

Site Layout



Nunavut's Approval Process Ensures the Environment is Protected



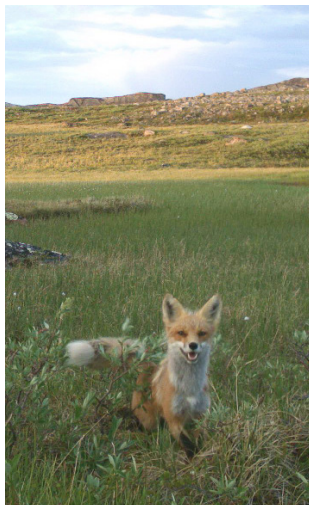
- The Nunavut Land Claims Agreement ensures a thorough review of TMAC's proposal
- Draft Environmental Impact Assessment will be submitted to the Nunavut Impact Review Board in December 2016
- Communities and governments will review the potential effects of the Madrid and Boston expansion
- TMAC will explain potential social, economic and environmental effects and benefits
- Nunavut Water Board would issue a licence allowing use and discharge of water



Studies of Land and Air



- Traditional Knowledge
- Climate and Weather
- Air Quality
- Noise and Vibration
- Geology
- Soils
- Vegetation
- Wildlife



Freshwater and Marine Environments



- Traditional Knowledge
- Surface water flows
- Ground water flows
- Freshwater quality and quantity
- Fish
- Ocean water quality
- Marine wildlife



Understanding Heritage and Communities



- Archaeology and heritage
- Socio-economic
- Land use
- Human health
- Traditional Values



Opportunities for Employment and Training



Types of jobs available:

- Cooks
- Drillers and blasters
- Electricians
- Engineers
- Environmental staff
- First aid attendants
- Heavy equipment operators
- Human resource personnel
- Janitors
- Mechanics
- Nurses
- Plumbers
- Security guards
- Steamfitters and pipefitters
- Underground miners
- Welders
- Geologists
- Mine and mill managers and general foremen

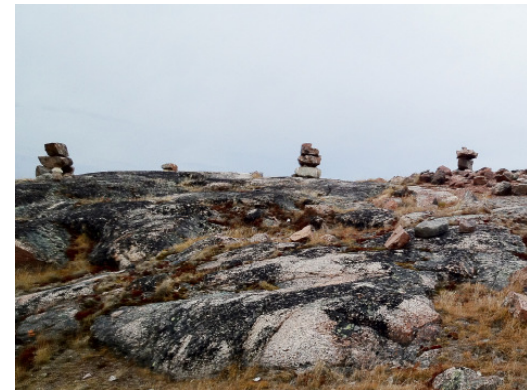
Boston



Following Nunavut's Process



- TMAC is consulting with the KIA, HTOs, hamlets, territorial and federal government agencies, and communities about the Project.



- Comments and questions can be submitted this evening or can be directed to our Director of External and Community Relations by phone, email, or visit our office in Cambridge Bay.