

**Deposition Option 1  
Interim Dike Situated Upstream  
of Tail Lake Bay**

Phase 2 Capacity: 13.9Mm³  
Tailings Surface Area: 1.63km²  
Spigot Elevation:  
• 49.0 around basin perimeter  
• 48.5m in Centre  
South Dam Raise Volume: 385,000m³  
Interim Dike Volume: 1,140,000m³  
Saddle Dike 1 Volume: 147,000m³  
Saddle Dike 2 Volume: 8,000m³  
Saddle Dike 3 Volume: 62,000m³  
Tailings Line: 10,700m  
East Road Upgrade: 24,000m³  
West Access Road: 10,200m³

**NOTES**

1. Tailings Phase 2 Options occur after Phase 1. Total TIA Storage of 17.6Mt includes Phase 1 Tailings (2.5Mt) and Phase 2 Tailings (15.1Mt).
2. Assumed an average deposited tailings beach slope of 1.0%.
3. A deposited dry density of 1.3t/m³ was used based on laboratory testing.
4. Ice entrainment was assumed at 20% of production.
5. Total storage requirements to accommodate Madrid and Boston tailings "Phase 2" is 13.9Mm³ (Tailings 11.6Mm³+ ice entrainment 2.3Mm³).
6. Access road volumes are based on an assumed configuration of 10 Wide x1.0m thickness.

**LEGEND**

- Spigot Location
- Deposited Tailings
- Dam/Dike
- Proposed Road Realignment
- Proposed Tailings Line
- Proposed Tailings Topography



SRK JOB NO.: 1CT022.004.600.010  
FILE NAME: HB PH2 DEPOSITION FIGURE 3.dwg



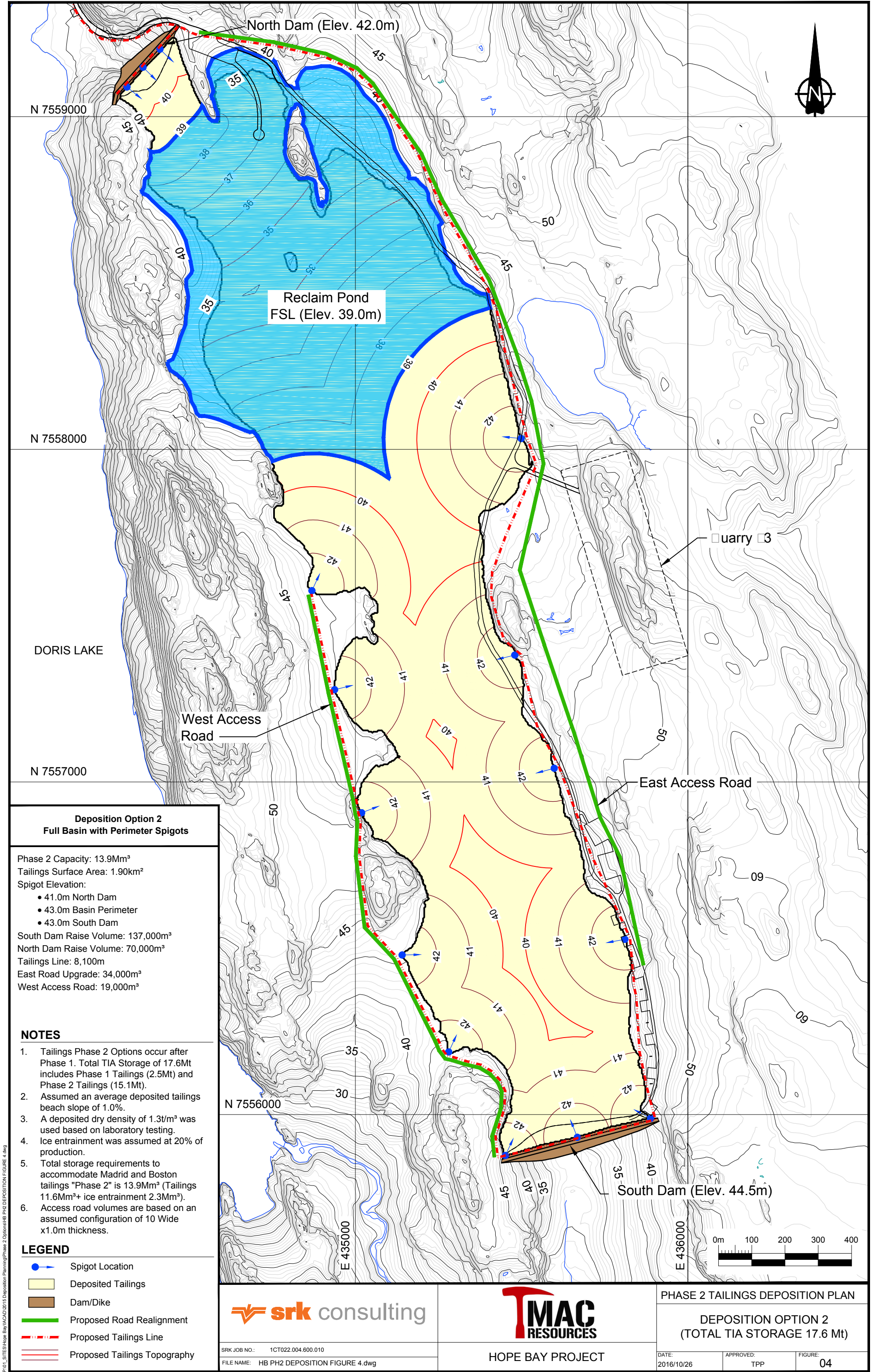
HOPE BAY PROJECT

PHASE 2 TAILINGS DEPOSITION PLAN

DEPOSITION OPTION 1  
(TOTAL TIA STORAGE 17.6 Mt)

DATE: 2016/10/26  
APPROVED: TPP  
FIGURE: 03





**Deposition Option 2  
Full Basin with Perimeter Spigots**

Phase 2 Capacity: 13.9Mm³  
Tailings Surface Area: 1.90km²  
Spigot Elevation:  
• 41.0m North Dam  
• 43.0m Basin Perimeter  
• 43.0m South Dam  
South Dam Raise Volume: 137,000m³  
North Dam Raise Volume: 70,000m³  
Tailings Line: 8,100m  
East Road Upgrade: 34,000m³  
West Access Road: 19,000m³

**NOTES**

1. Tailings Phase 2 Options occur after Phase 1. Total TIA Storage of 17.6Mt includes Phase 1 Tailings (2.5Mt) and Phase 2 Tailings (15.1Mt).
2. Assumed an average deposited tailings beach slope of 1.0%.
3. A deposited dry density of 1.3t/m³ was used based on laboratory testing.
4. Ice entrainment was assumed at 20% of production.
5. Total storage requirements to accommodate Madrid and Boston tailings "Phase 2" is 13.9Mm³ (Tailings 11.6Mm³+ ice entrainment 2.3Mm³).
6. Access road volumes are based on an assumed configuration of 10 Wide x1.0m thickness.

**LEGEND**

- Spigot Location
- Deposited Tailings
- Dam/Dike
- Proposed Road Realignment
- - - Proposed Tailings Line
- Proposed Tailings Topography

**srk consulting**

SRK JOB NO.: 1CT022.004.600.010  
FILE NAME: HB PH2 DEPOSITION FIGURE 4.dwg

**TMAC  
RESOURCES**

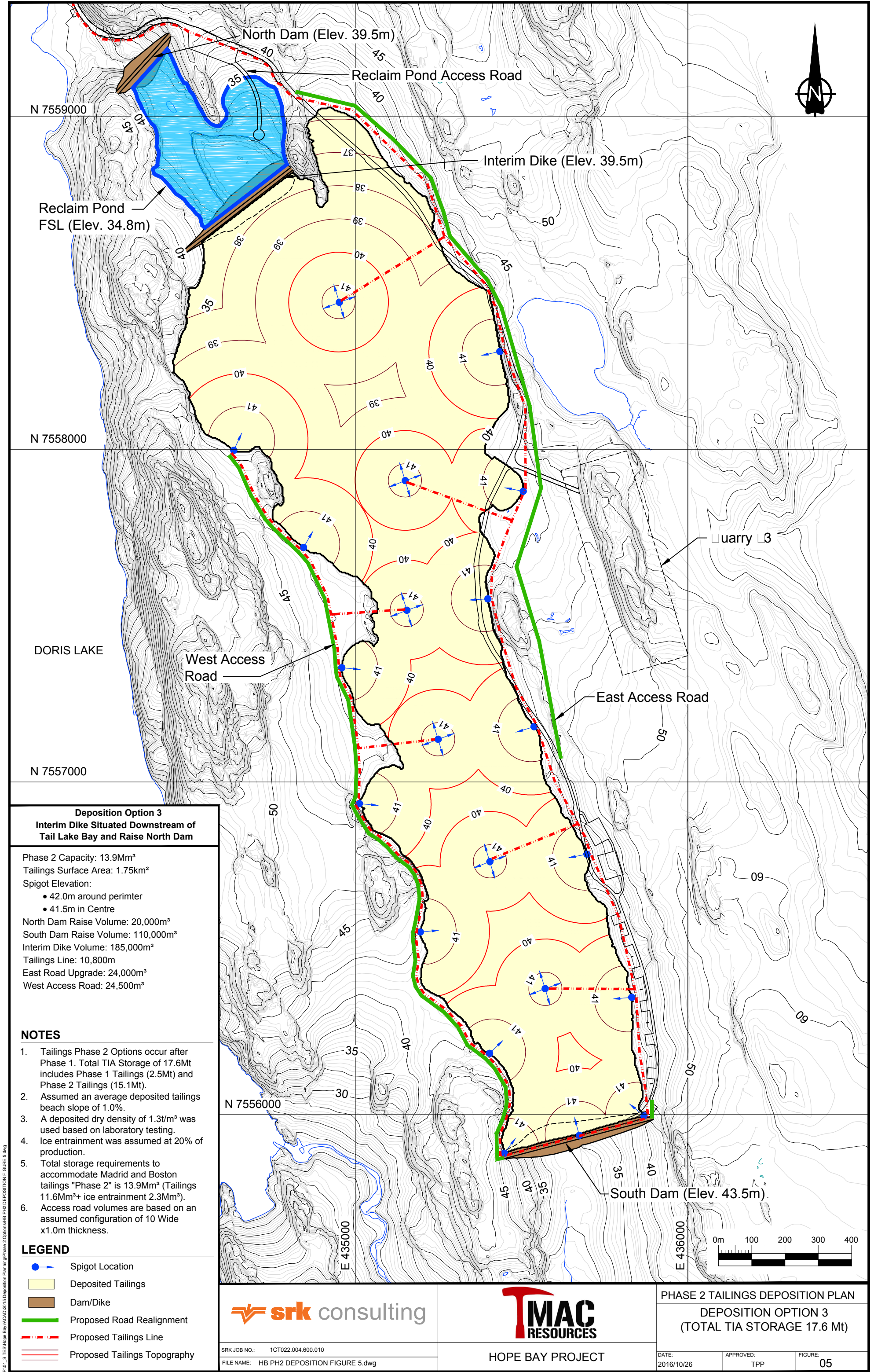
HOPE BAY PROJECT

PHASE 2 TAILINGS DEPOSITION PLAN

DEPOSITION OPTION 2  
(TOTAL TIA STORAGE 17.6 Mt)

DATE: 2016/10/26  
APPROVED: TPP  
FIGURE: 04





**Deposition Option 3**  
**Interim Dike Situated Downstream of**  
**Tail Lake Bay and Raise North Dam**

Phase 2 Capacity: 13.9Mm³  
Tailings Surface Area: 1.75km²  
Spigot Elevation:  
• 42.0m around perimeter  
• 41.5m in Centre  
North Dam Raise Volume: 20,000m³  
South Dam Raise Volume: 110,000m³  
Interim Dike Volume: 185,000m³  
Tailings Line: 10,800m  
East Road Upgrade: 24,000m³  
West Access Road: 24,500m³

**NOTES**

1. Tailings Phase 2 Options occur after Phase 1. Total TIA Storage of 17.6Mt includes Phase 1 Tailings (2.5Mt) and Phase 2 Tailings (15.1Mt).
2. Assumed an average deposited tailings beach slope of 1.0%.
3. A deposited dry density of 1.3t/m³ was used based on laboratory testing.
4. Ice entrainment was assumed at 20% of production.
5. Total storage requirements to accommodate Madrid and Boston tailings "Phase 2" is 13.9Mm³ (Tailings 11.6Mm³+ ice entrainment 2.3Mm³).
6. Access road volumes are based on an assumed configuration of 10 Wide x1.0m thickness.

**LEGEND**

- Spigot Location
- Deposited Tailings
- Dam/Dike
- Proposed Road Realignment
- Proposed Tailings Line
- Proposed Tailings Topography



SRK JOB NO.: 1CT022.004.600.010  
FILE NAME: HB PH2 DEPOSITION FIGURE 5.dwg



HOPE BAY PROJECT

PHASE 2 TAILINGS DEPOSITION PLAN  
DEPOSITION OPTION 3  
(TOTAL TIA STORAGE 17.6 Mt)

DATE: 2016/10/26	APPROVED: TPP	FIGURE: 05
---------------------	------------------	---------------