

**Deposition Option 4**  
**Interim Dike Situated Downstream of Tail Lake Bay and No Raise to North Dam**

Phase 2 Capacity: 13.9Mm³  
Tailings Surface Area: 1.78km²  
Spigot Elevation:  
• 45.0m Basin Perimeter and South Dam  
• 44.5m Center  
• 43.0m in Last 3 North  
Saddle Dike Volume: 47,000m³  
South Dam Raise Volume: 204,300m³  
Interim Dike Volume: 58,200m³  
Tailings Line: 9,000m  
East Road Upgrade: 34,600m³  
West Access Road: 15,800m³

**NOTES**

1. Tailings Phase 2 Options occur after Phase 1. Total TIA Storage of 17.6Mt includes Phase 1 Tailings (2.5Mt) and Phase 2 Tailings (15.1Mt).
2. Assumed an average deposited tailings beach slope of 1.0%.
3. A deposited dry density of 1.3t/m³ was used based on laboratory testing.
4. Ice entrainment was assumed at 20% of production.
5. Total storage requirements to accommodate Madrid and Boston tailings "Phase 2" is 13.9Mm³ (Tailings 11.6Mm³+ ice entrainment 2.3Mm³).
6. Access road volumes are based on an assumed configuration of 10 Wide x1.0m thickness.

**LEGEND**

- Spigot Location
- Deposited Tailings
- Dam/Dike
- Proposed Road Realignment
- Proposed Tailings Line
- Proposed Tailings Topography

**srk consulting**

SRK JOB NO.: 1CT022.004.600.010  
FILE NAME: HB PH2 DEPOSITION FIGURE 6.dwg

**TMAC**  
RESOURCES

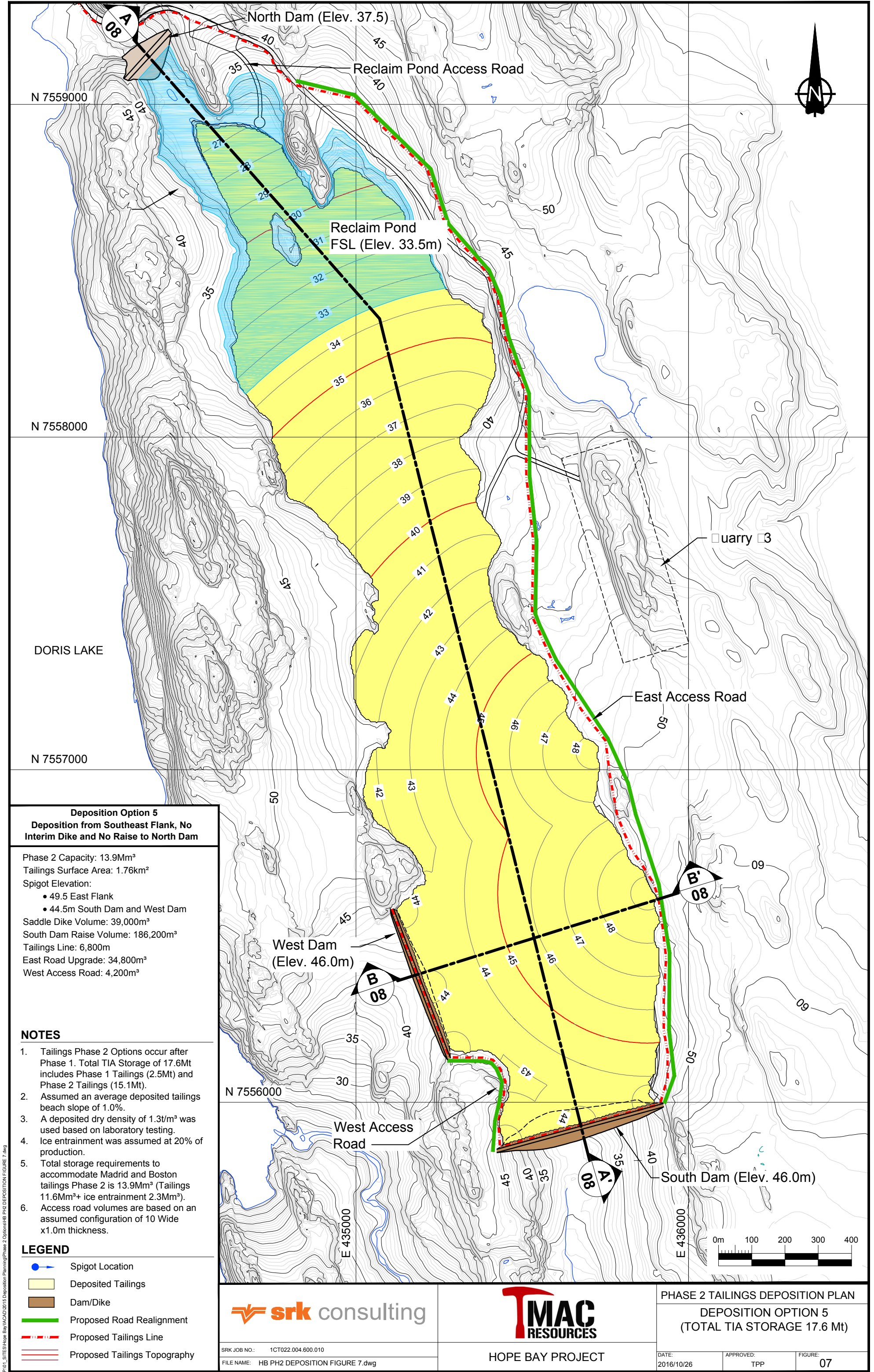
HOPE BAY PROJECT

PHASE 2 TAILINGS DEPOSITION PLAN

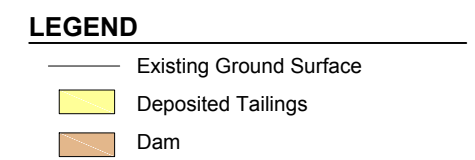
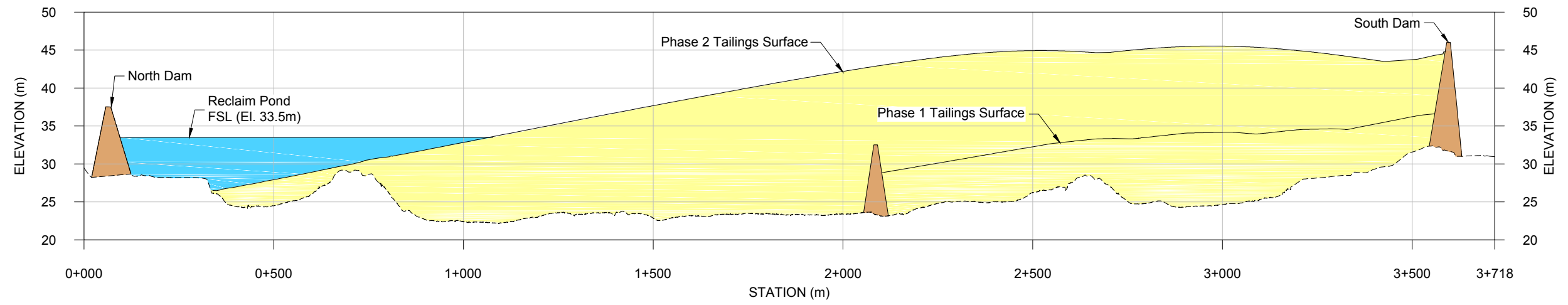
DEPOSITION OPTION 4  
(TOTAL TIA STORAGE 17.6 Mt)

DATE: 2016/10/26  
APPROVED: TPP  
FIGURE: 06

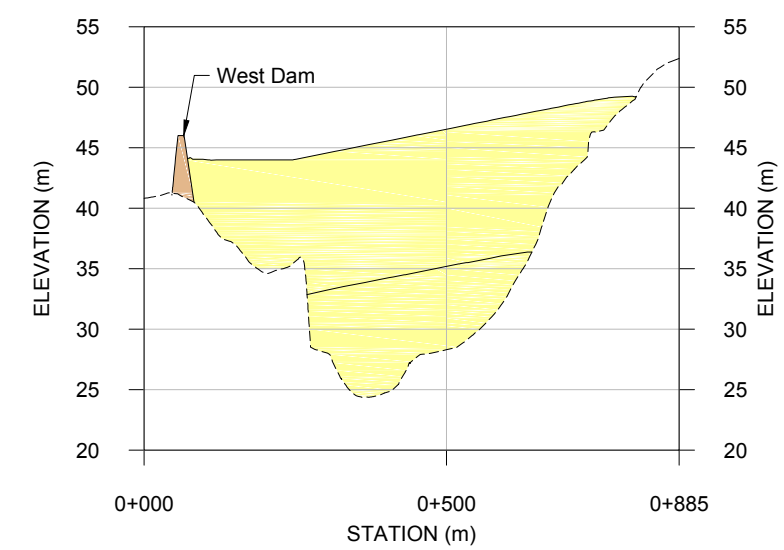




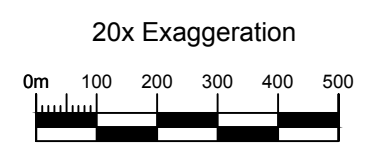




**AA**  
**07** SECTION



**BB**  
**07** SECTION



		PHASE 2 TAILINGS DEPOSITION PLAN		
		DEPOSITION OPTION 5 (TOTAL TIA STORAGE 17.6Mt) SECTIONS AA AND BB		
SRK JOB NO.: 1CT022.004.600.010 FILE NAME: HB PH2 DEPOSITION FIGURE 8.dwg	HOPE BAY PROJECT	DATE: 2016/10/27	APPROVED: TPP	FIGURE: 08