

**LEGEND**

- DISCHARGE LOCATION
- TREATED EFFLUENT WATER DISCHARGE
- CONTOUR (2 m)
- CULVERT
- FLOW DIRECTION
- SERVICE ROAD
- WINTER ICE ROAD
- WATER INTAKE PIPELINE
- EFFLUENT DISCHARGE PIPELINE
- WATERCOURSE
- CONTACT WATER DIVERSION BERM (UNLINED)
- CONTACT WATER CONTAINMENT DAM (LINED)
- NON-CONTACT WATER DIVERSION BERM (UNLINED)

**GOOSE LAYOUT**

- U/G LAYDOWN AREA
- OTHER INFRASTRUCTURE
- RESOURCE PIT
- CAMP/PLANT SITE
- WASTE ROCK STORAGE AREA
- ORE STOCKPILE
- CONTACT WATER EVENT POND FULL SUPPLY LEVEL
- HAUL ROAD
- LANDFARM
- TAILINGS EMERGENCY POND
- WATERBODY

**ISSUED FOR PERMITTING**

0 500 1,000  
1:20,000 METRES

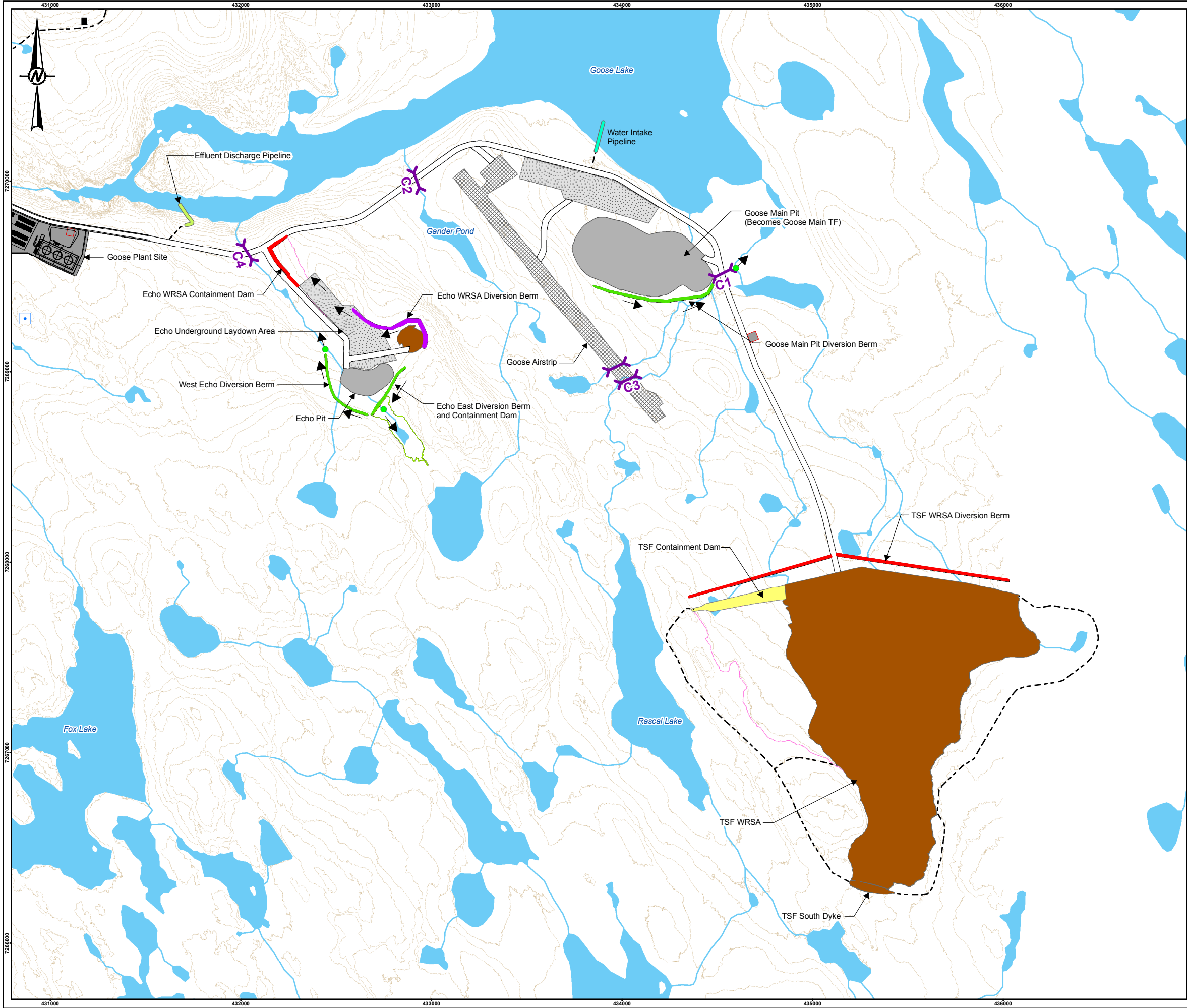
**REFERENCE(S)**  
FOOTPRINT OBTAINED FROM CLIENT. HYDROGRAPHY DATA OBTAINED FROM GEOGRATIS, © DEPARTMENT OF NATURAL RESOURCES CANADA. ALL RIGHTS RESERVED.  
PROJECTION: UTM ZONE 13N DATUM: NAD 83

YYYY-MM-DD	2018-02-05	CLIENT
DESIGNED	SRK	 
PREPARED	MM	
REVIEWED	DRW	
APPROVED	PC	
PROJECT BACK RIVER PROJECT, WATER LICENCE PHASE NUNAVUT, CANADA		
TITLE <b>GENERAL ARRANGEMENT SHEET 1 OF 2</b>		
PROJECT NO. 1776921	FIGURE A-11	REV. B

PATH: I:\2017\1776921\Maping\WCD\Hydrology\1776921\_FIG\_A\_11.mxd PRINTED ON: 2018-02-05 AT: 11:26:32 AM

IF THIS MEASUREMENT DOES NOT MATCH WHAT IS SHOWN, THE SHEET SIZE HAS BEEN MODIFIED FROM: ANSI B 25mm





**LEGEND**

- DISCHARGE LOCATION
- TREATED EFFLUENT WATER DISCHARGE
- CONTOUR (2 m)
- CULVERT
- FLOW DIRECTION
- SERVICE ROAD
- WATER INTAKE PIPELINE
- EFFLUENT DISCHARGE PIPELINE
- WATERCOURSE
- CONTACT WATER DIVERSION BERM (UNLINED)
- CONTACT WATER CONTAINMENT DAM (LINED)
- NON-CONTACT WATER DIVERSION BERM (UNLINED)

**GOOSE LAYOUT**

- PROPOSED AIRSTRIP
- U/G LAYDOWN AREA
- OTHER INFRASTRUCTURE
- RESOURCE PIT
- CAMP/PLANT SITE
- WASTE ROCK STORAGE
- TAILINGS STORAGE FACILITY EMBANKMENT
- TSF SOUTH DYKE
- CONTACT WATER EVENT POND FULL SUPPLY LEVEL
- HAUL ROAD
- NON-CONTACT WATER EVENT POND
- TAILINGS EMERGENCY POND
- WATERBODY

**ISSUED FOR PERMITTING**

0 500 1,000  
1:20,000 METRES

**REFERENCE(S)**  
FOOTPRINT OBTAINED FROM CLIENT. HYDROGRAPHY DATA OBTAINED FROM GEOGRATIS, © DEPARTMENT OF NATURAL RESOURCES CANADA. ALL RIGHTS RESERVED.  
PROJECTION: UTM ZONE 13N DATUM: NAD 83

YYYY-MM-DD	2018-02-05	CLIENT
DESIGNED	SRK	 
PREPARED	MM	
REVIEWED	DRW	
APPROVED	PC	
PROJECT BACK RIVER PROJECT, WATER LICENCE PHASE NUNAVUT, CANADA		
TITLE <b>GENERAL ARRANGEMENT SHEET 2 OF 2</b>		
PROJECT NO. 1776921	FIGURE A-12	REV. B

PATH: I:\3017\17420\Maping\NCD\Hydrology\1776921\_FIG\_A\_12.mxd PRINTED ON: 2018-02-05 AT: 11:00:52 AM

IF THIS MEASUREMENT DOES NOT MATCH WHAT IS SHOWN, THE SHEET SIZE HAS BEEN MODIFIED FROM: ANSI B