

LEGEND

- CONTOUR (2 m)
- CULVERT
- SERVICE ROAD
- WINTER ICE ROAD
- WATER INTAKE PIPELINE
- EFFLUENT DISCHARGE PIPELINE
- PUMPED CONTACT WATER PIPELINE
- PUMPED DEWATERING PIPELINE
- PUMPED SALINE WATER PIPELINE
- SITE INFRASTRUCTURE
- WATERCOURSE
- CONTACT WATER DIVERSION BERM (UNLINED)
- CONTACT WATER CONTAINMENT DAM (LINED)
- NON-CONTACT WATER DIVERSION BERM (UNLINED)
- WATER TREATMENT PLANT

GOOSE LAYOUT

- AIRSTRIp
- U/G LAYDOWN AREA
- OTHER INFRASTRUCTURE
- RESOURCE PIT
- CAMP/PLANT SITE
- TSF CONTAINMENT DAM EMBANKMENT
- TSF SOUTH DYKE
- CONTACT WATER EVENT POND
- HAUL ROAD
- LANDFARM
- TAILINGS EMERGENCY POND
- WASTE ROCK STORAGE AREA
- GOOSE ROM STOCKPILE
- WATERBODY

ISSUED FOR PERMITTING

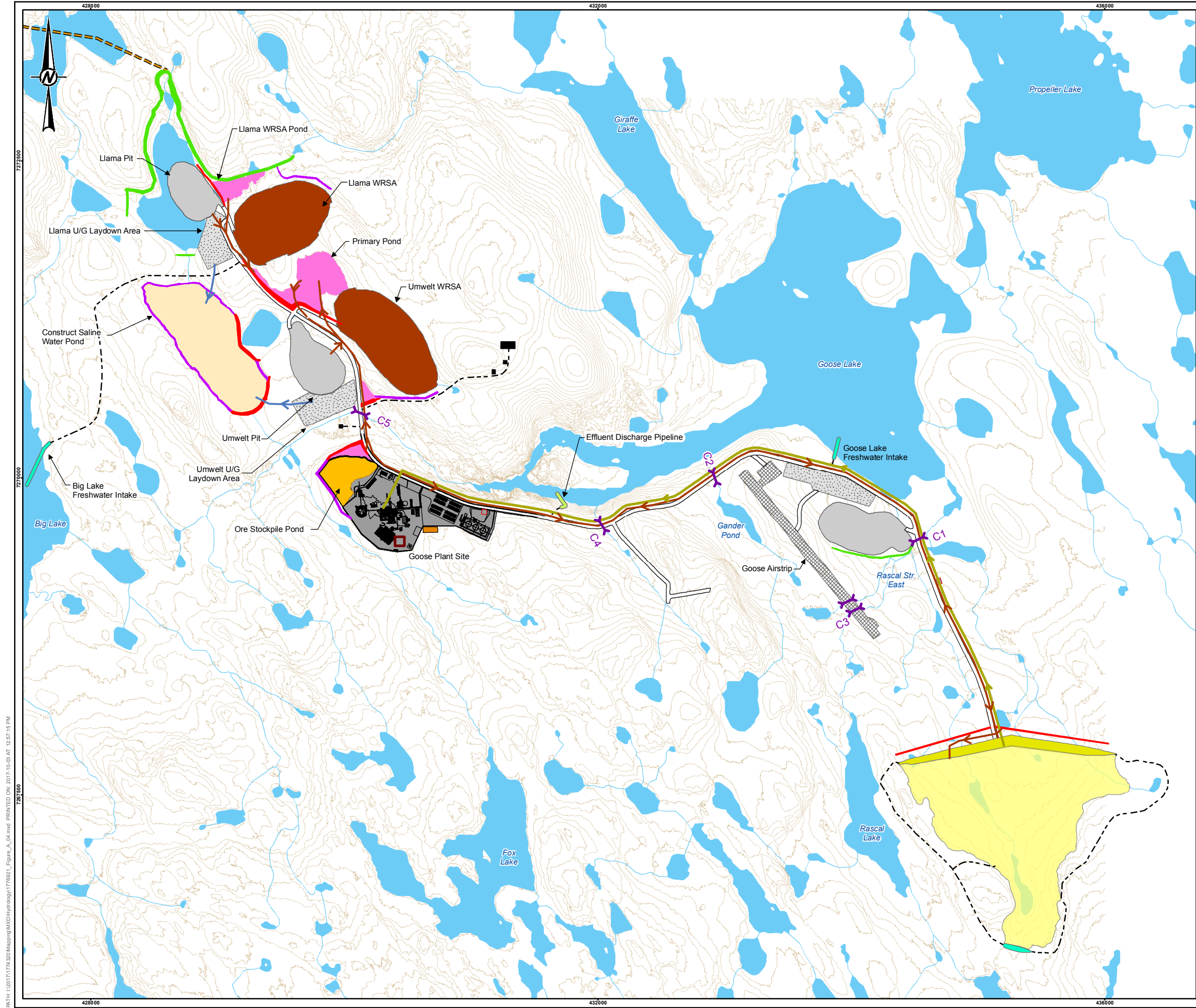
0 750 1,500
1:30,000 METRES

REFERENCE(S)
FOOTPRINT OBTAINED FROM CLIENT. HYDROGRAPHY DATA OBTAINED FROM GEOGRATIS, © DEPARTMENT OF NATURAL RESOURCES CANADA. ALL RIGHTS RESERVED.
PROJECTION: UTM ZONE 13N DATUM: NAD 83

YYYY-MM-DD	2017-10-03	CLIENT
DESIGNED	SRK	
PREPARED	RC	
REVIEWED	DRW	
APPROVED	PC	
PROJECT SABINA BACK RIVER PROJECT, WATER LICENCE PHASE, NUNAVUT CANADA		
TITLE PHASE 1 CONSTRUCTION YEAR -3 TO YEAR -1		
PROJECT NO. 1776921	FIGURE A-03	REV. B

PATH: I:\2017\1776921\Maping\Maping\Hydrology\1776921_Figure_A_03.mxd PRINTED ON: 2017-10-03 AT: 12:55:31 PM

IF THIS MEASUREMENT DOES NOT MATCH WHAT IS SHOWN, THE SHEET SIZE HAS BEEN MODIFIED FROM: ANSI B 28mm



LEGEND

- CONTOUR (2 m)
- CULVERT
- SERVICE ROAD
- WINTER ICE ROAD
- WATER INTAKE PIPELINE
- EFFLUENT DISCHARGE PIPELINE
- SITE INFRASTRUCTURE
- PUMPED CONTACT WATER PIPELINE
- PUMPED SALINE WATER PIPELINE
- RECLAIM WATER / SLURRY PIPELINE
- WATERCOURSE
- WATER TREATMENT PLANT
- CONTACT WATER DIVERSION BERM (UNLINED)
- CONTACT WATER CONTAINMENT DAM (LINED)
- NON-CONTACT WATER DIVERSION BERM (UNLINED)

GOOSE LAYOUT

- AIRSTRIP
- U/G LAYDOWN AREA
- OTHER INFRASTRUCTURE
- RESOURCE PIT
- CAMP/PLANT SITE
- TSF CONTAINMENT DAM EMBANKMENT
- TSF SOUTH DYKE
- CONTACT WATER EVENT POND
- HAUL ROAD
- LANDFARM
- TAILINGS EMERGENCY POND
- ACTIVE TSF
- SALINE WATER POND
- WATERBODY
- WASTE ROCK STORAGE AREA

ISSUED FOR PERMITTING

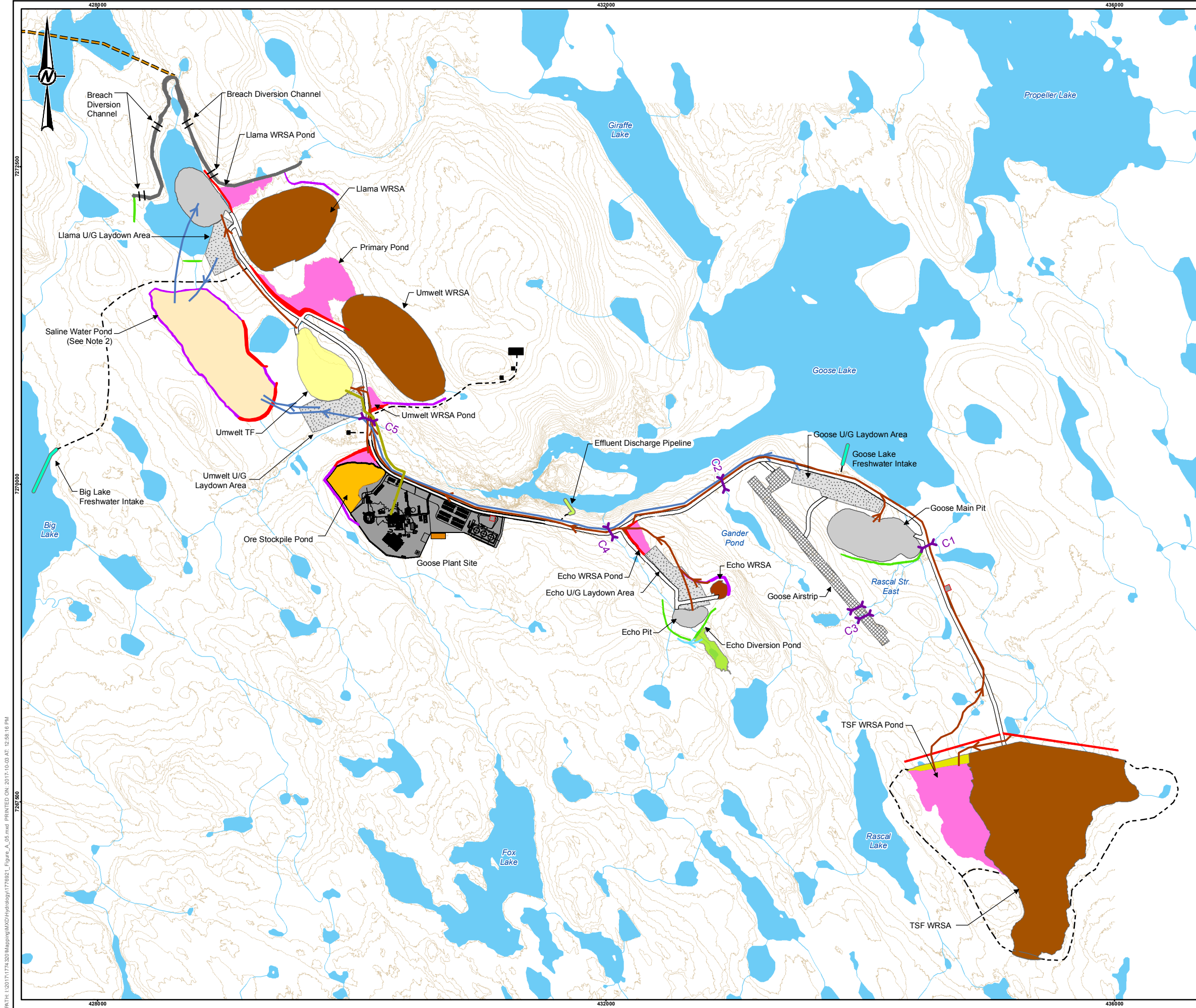
0 750 1,500
1:30,000 METRES

REFERENCE(S)
FOOTPRINT OBTAINED FROM CLIENT. HYDROGRAPHY DATA OBTAINED FROM GEOGRATIS, © DEPARTMENT OF NATURAL RESOURCES CANADA. ALL RIGHTS RESERVED.
PROJECTION: UTM ZONE 13N DATUM: NAD 83

YYYY-MM-DD	2017-10-03	CLIENT
DESIGNED	SRK	 Sabina GOLD & SILVER CORP.
PREPARED	SG	
REVIEWED	DRW	
APPROVED	PC	
PROJECT SABINA BACK RIVER PROJECT, WATER LICENCE PHASE, NUNAVUT CANADA		 Golder Associates
TITLE PHASE 2, STAGE 1 TSF OPERATION YEAR -1 TO YEAR 2		
PROJECT NO. 1776921	FIGURE A-04	REV. B

PATH: I:\2017\1776921\Maping\Maping\Hydrology\1776921_Figure_A_04.mxd PRINTED ON: 2017-10-03 AT: 12:57:15 PM

IF THIS MEASUREMENT DOES NOT MATCH WHAT IS SHOWN, THE SHEET SIZE HAS BEEN MODIFIED FROM: ANSI B 28mm



LEGEND

- BREACH BERM LOCATION
- CONTOUR (2 m)
- CULVERT
- PUMPED CONTACT WATER PIPELINE
- PUMPED NON-CONTACT WATER PIPELINE
- PUMPED SALINE WATER PIPELINE
- RECLAIM WATER / SLURRY PIPELINE
- SITE INFRASTRUCTURE
- SERVICE ROAD
- WINTER ICE ROAD
- WATER INTAKE PIPELINE
- EFFLUENT DISCHARGE PIPELINE
- WATERCOURSE
- ACTIVE TF
- BREACHED NON-CONTACT WATER DIVERSION BERM (UNLINED)
- CONTACT WATER DIVERSION BERM (UNLINED)
- CONTACT WATER CONTAINMENT DAM (LINED)
- NON-CONTACT WATER DIVERSION BERM (UNLINED)

GOOSE LAYOUT

- AIRSTRIp
- U/G LAYDOWN AREA
- OTHER INFRASTRUCTURE
- RESOURCE PIT
- CAMP/PLANT SITE
- WASTE ROCK STORAGE AREA
- TSF CONTAINMENT DAM EMBANKMENT
- TSF SOUTH DYKE
- CONTACT WATER EVENT POND
- HAUL ROAD
- LANDFARM
- TAILINGS EMERGENCY POND
- NON-CONTACT WATER EVENT POND
- SALINE WATER POND
- WATERBODY

ISSUED FOR PERMITTING

0 750 1,500
1:30,000 METRES

NOTE(S)
1. CONTOURS SHOWN AT 2M INTERVALS.
2. SALINE WATER FROM UNDERGROUND IS PUMPED TO SALINE WATER POND. ONCE UNDERGROUND MINING IS COMPLETE, SALINE WATER IS PUMPED BACK TO UNDERGROUND.

REFERENCE(S)
FOOTPRINT OBTAINED FROM CLIENT. HYDROGRAPHY DATA OBTAINED FROM GEOGRATIS, © DEPARTMENT OF NATURAL RESOURCES CANADA. ALL RIGHTS RESERVED.
PROJECTION: UTM ZONE 13N DATUM: NAD 83

YYYY-MM-DD	2017-10-03	CLIENT
DESIGNED	SRK	
PREPARED	RC	
REVIEWED	DRW	
APPROVED	PC	

PROJECT
SABINA BACK RIVER PROJECT, WATER LICENCE PHASE,
NUNAVUT CANADA

TITLE
**PHASE 2, STAGE 2 UMWELT TF
YEAR 2 TO YEAR 6**

PROJECT NO.	FIGURE	REV.
1776921	A-05	B

PATH: I:\2017\1776921\Maping\WCD\Hydrog\1776921_Figure_A_05.mxd PRINTED ON: 2017-10-03 AT: 12:58:16 PM

IF THIS MEASUREMENT DOES NOT MATCH WHAT IS SHOWN, THE SHEET SIZE HAS BEEN MODIFIED FROM: ANSI B 28mm