

LEGEND

- || BREACH BERM LOCATION
- CONTOUR (2 m)
- CULVERT
- SERVICE ROAD
- WINTER ICE ROAD
- WATER INTAKE PIPELINE
- EFFLUENT DISCHARGE PIPELINE
- WATER TREATMENT PLANT
- PUMPED NON-CONTACT WATER PIPELINE
- PUMPED CONTACT WATER PIPELINE
- PUMPED DEWATERING PIPELINE
- PUMPED SALINE WATER PIPELINE
- RECLAIM WATER / SLURRY PIPELINE
- SITE INFRASTRUCTURE
- WATERCOURSE
- BREACHED NON-CONTACT WATER DIVERSION BERM (UNLINED)
- CONTACT WATER DIVERSION BERM (UNLINED)
- CONTACT WATER CONTAINMENT DAM (LINED)
- NON-CONTACT WATER DIVERSION BERM (UNLINED)

GOOSE LAYOUT



- AIRSTRIP
- U/G LAYDOWN AREA
- OTHER INFRASTRUCTURE
- RESOURCE PIT
- CAMP/PLANT SITE
- CLOSED WASTE ROCK STORAGE AREA
- TSF CONTAINMENT DAM EMBARKMENT
- TSF SOUTH DYKE
- CONTACT WATER EVENT POND
- HAUL ROAD
- LANDFARM
- TAILINGS EMERGENCY POND
- NON-CONTACT WATER EVENT POND
- SALINE WATER POND
- ACTIVE TF
- INACTIVE TF
- WATERBODY
- WASTE ROCK STORAGE AREA
- WATER TREATMENT PLANT

ISSUED FOR PERMITTING



NOTE(S)
 1. CONTOURS SHOWN AT 2M INTERVALS.
 2. SALINE WATER FROM UNDERGROUND IS PUMPED TO SALINE WATER POND. ONCE UNDERGROUND MINING IS COMPLETE, SALINE WATER IS PUMPED BACK TO UNDERGROUND.
 3. TREATED WATER FROM GOOSE MAIN TF IS PUMPED BACK IN PARALLEL PIPELINE.

REFERENCE(S)
 FOOTPRINT OBTAINED FROM CLIENT. HYDROGRAPHY DATA OBTAINED FROM GEOGRATIS, © DEPARTMENT OF NATURAL RESOURCES CANADA. ALL RIGHTS RESERVED.
 PROJECTION: UTM ZONE 13 DATUM: NAD 83

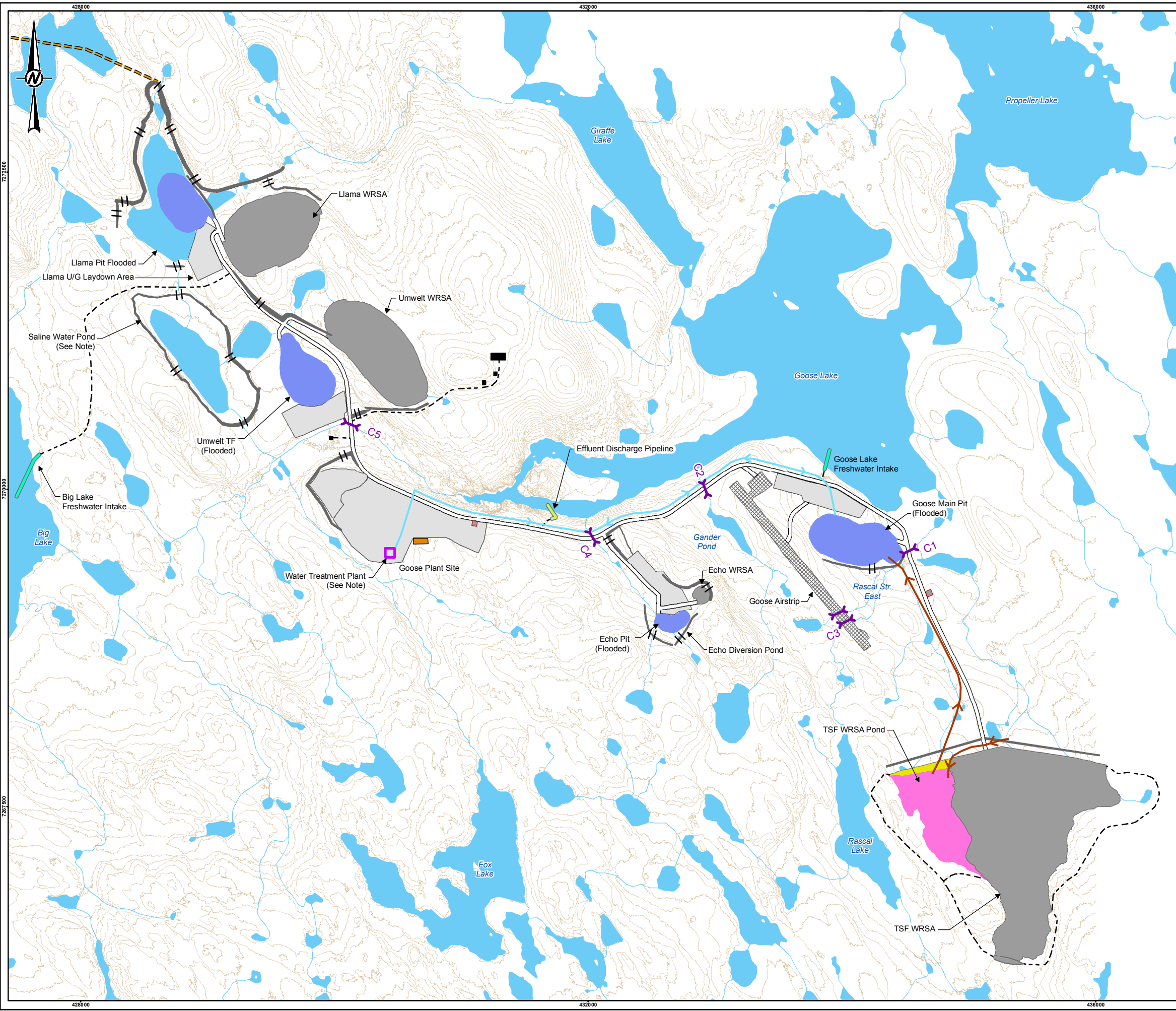
YYYY-MM-DD	2017-10-03	CLIENT
DESIGNED	SRK	 
PREPARED	SG	
REVIEWED	DRW	
APPROVED	PC	

PROJECT
SABINA BACK RIVER PROJECT, WATER LICENCE PHASE, NUNAVUT CANADA

TITLE
PHASE 2, STAGE 3 GOOSE MAIN TF YEAR 6 TO YEAR 10

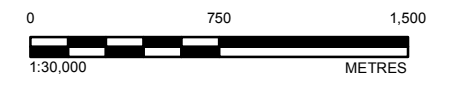
PROJECT NO.	FIGURE	REV.
1776921	A-06	B

PATH: I:\2017\1776921\Maping\Maping\1776921_Figure_A_06.mxd PRINTED ON: 2017-10-03 AT: 12:59:46 PM
 IF THIS MEASUREMENT DOES NOT MATCH WHAT IS SHOWN, THE SHEET SIZE HAS BEEN MODIFIED FROM: ANSI B



- LEGEND**
- BREACH BERM LOCATION
 - CONTOUR (2 m)
 - CULVERT
 - PUMPED CONTACT WATER PIPELINE
 - WATER TREATMENT PIPELINE
 - SERVICE ROAD
 - WINTER ICE ROAD
 - WATER INTAKE PIPELINE
 - EFFLUENT DISCHARGE PIPELINE
 - WATERCOURSE
 - BERM
 - PROPOSED AIRSTRIP
 - DECOMMISSIONED PADS
 - OTHER INFRASTRUCTURE
 - TSF CONTAINMENT DAM EMBANKMENT
 - TSF SOUTH DYKE
 - HAUL ROAD
 - INACTIVE WASTE ROCK STORAGE AREA
 - LANDFARM
 - TAILINGS EMERGENCY POND
 - PIT LAKE (CLOSED)
 - WATERBODY
 - WATER TREATMENT PLANT

ISSUED FOR PERMITTING



NOTE(S)
 1. TREATED WATER FROM GOOSE MAIN TF IS PUMPED BACK IN PARALLEL PIPELINE.

REFERENCE(S)
 FOOTPRINT OBTAINED FROM CLIENT. HYDROGRAPHY DATA OBTAINED FROM GEOGRATIS. © DEPARTMENT OF NATURAL RESOURCES CANADA. ALL RIGHTS RESERVED.
 PROJECTION: UTM ZONE 13 DATUM: NAD 83

YYYY-MM-DD	2017-10-03	CLIENT
DESIGNED	SRK	Sabina Golder Associates
PREPARED	SG	
REVIEWED	DRW	
APPROVED	PC	
PROJECT		CONSULTANT

PROJECT
 SABINA BACK RIVER PROJECT, WATER LICENCE PHASE,
 NUNAVUT CANADA

TITLE
**PHASE 3 CLOSURE
 YEAR 11 TO YEAR 18**

PROJECT NO. 1776921 FIGURE A-07 REV. B

PATH: I:\2017\1776921\Sabina\Maping\Maping\1776921_Figure_A_07.mxd PRINTED ON: 2017-10-03 AT: 1:01:42 PM
 25mm

IF THIS MEASUREMENT DOES NOT MATCH WHAT IS SHOWN, THE SHEET SIZE HAS BEEN MODIFIED FROM ANSI B