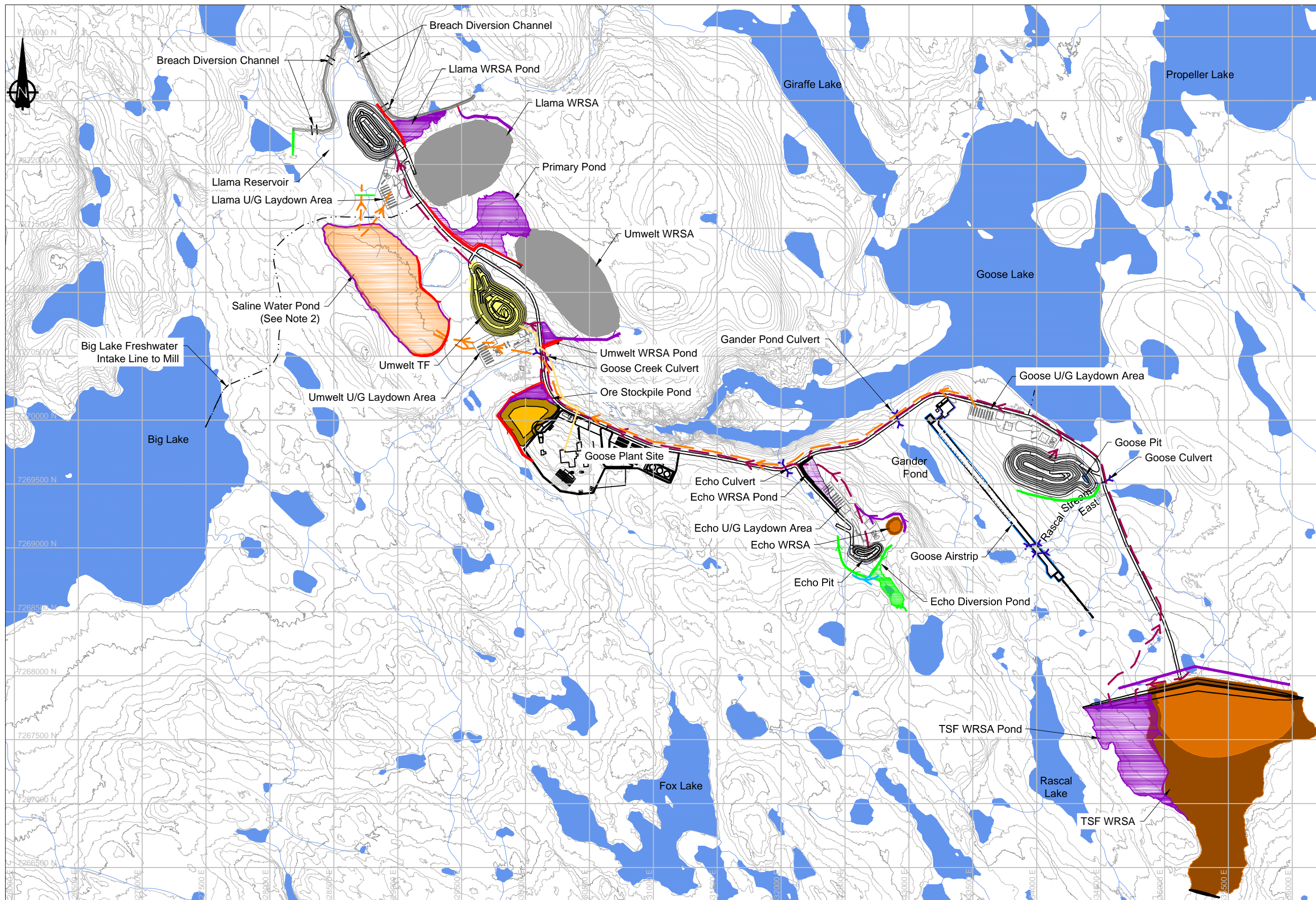


P:\01_SITES\Back River\040_AutoCAD\Water Management\FEIS\CS020.008 - Goose_Phase 2-2.dwg Plot Date: 9/18/2015 11:12 AM



LEGEND

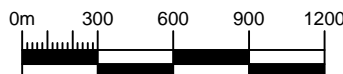
- Contact Water Event Pond
- Saline Water Pond
- Non-Contact Water Event Pond
- Culvert Location
- Breach Location
- Centerline of Creek
- Major Contour
- Minor Contour
- Road Infrastructure
- Breached Berm
- Intake Line
- Contact Water Diversion Berm (Unlined)
- Contact Water Diversion Berm (Lined)
- Non-Contact Water Diversion Berm (Unlined)
- Pumped Contact Water Pipeline
- Pumped Saline Water Pipeline
- Pumped Non-contact Water Pipeline
- Reclaim Water/Slurry Pipeline
- Waste Rock Storage Area
- Goose ROM Stockpile
- Active TF
- Inactive TF
- Covered Waste Rock Stockpile Area

NOTES

- Contours shown at 2m intervals.
- Saline water from underground is pumped to Saline Water Pond. Once underground mining is complete, saline water is pumped back to underground.

REFERENCE

NAD83 UTM Zone 13.
NTS Mapsheet: 076



SRK JOB NO.: 1CS020.008
FILE NAME: 1CS020.008 - Goose_Phase 2-2.dwg



BACK RIVER PROJECT

SITE WIDE WATER MANAGEMENT REPORT

PHASE 2, STAGE 2

Umwelt TF
Year 2 to Year 6

DATE:
2015/09/18

APPROVED:
EMR

FIGURE:
8