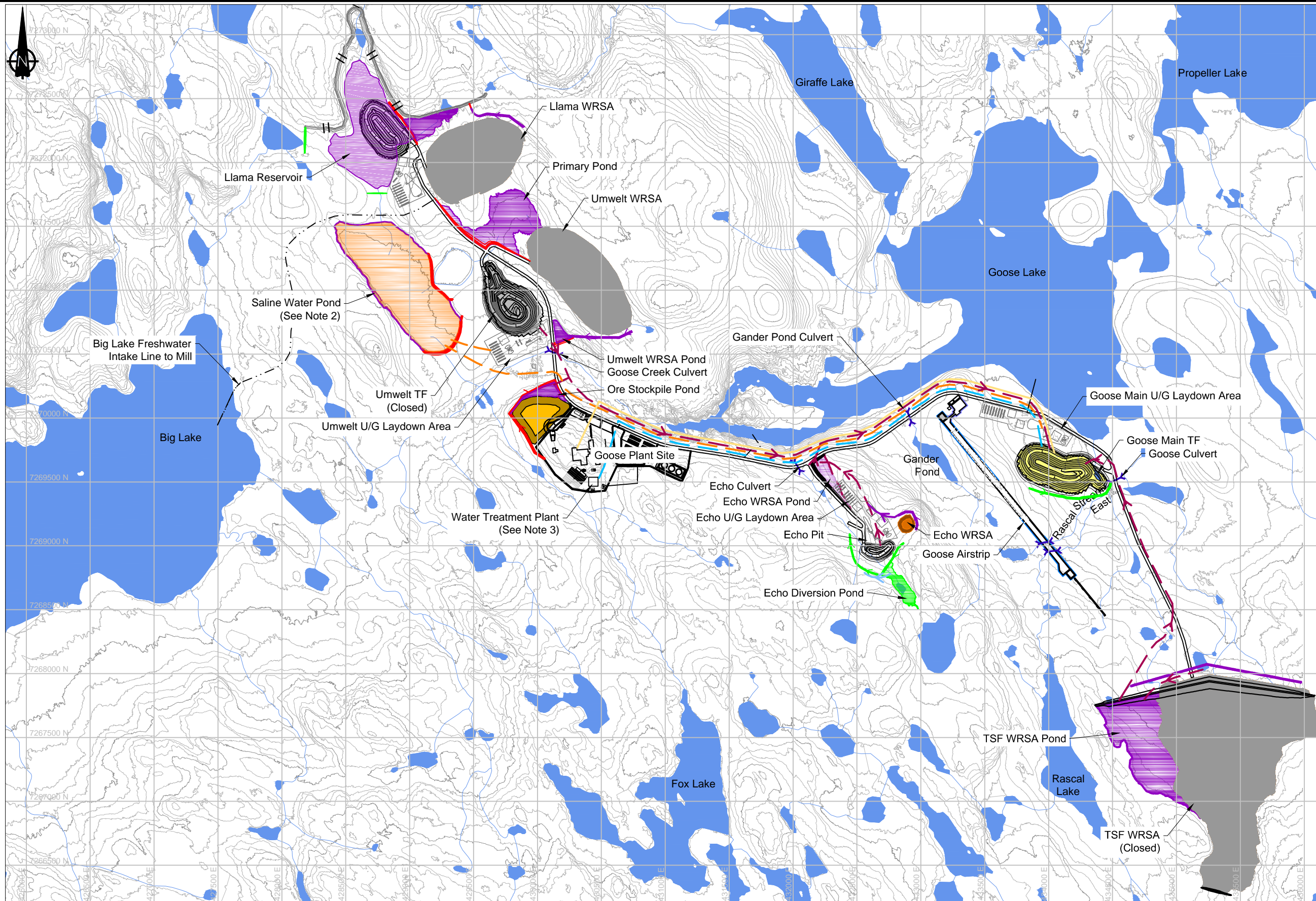


P:\01_SITES\Back River\040_AutoCAD\Water Management\FEIS\CS020.008 - Goose_Phase 2-3.dwg Pld Date: 8/21/2015 9:26 AM



LEGEND

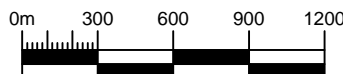
- Contact Water Event Pond
- Non-Contact Event Pond
- Saline Water Pond
- Culvert Location
- Centerline of Creek
- Major Contour
- Minor Contour
- Road Infrastructure
- Freshwater Intake line
- Contact Water Diversion Berm (Unlined)
- Contact Water Diversion Berm (Lined)
- Non-Contact Water Diversion Berm (Unlined)
- Breached Berm
- Water Treatment Pipeline
- Pumped Contact Water Pipeline
- Pumped Saline Water Pipeline
- Reclaim / Slurry Water Pipeline
- Pumped Non-Contact Water Pipeline
- Waste Rock Stockpile Area
- Covered Waste Rock Stockpile Area
- Goose ROM Stockpile
- Active TF
- Inactive TF
- Water Treatment Plant

NOTES

- Contours shown at 2m intervals.
- Saline water from underground is pumped to Saline water Pond. Once underground mining is complete, saline water is pumped back to underground and to Llama Reservoir.
- Treated water from Goose TF is pumped back in parallel pipeline.

REFERENCE

NAD83 UTM Zone 13.
NTS Mapsheet: 076



SRK JOB NO.: 1CS020.008
FILE NAME: 1CS020.008 - Goose_Phase 2-3.dwg



BACK RIVER PROJECT

SITE WIDE WATER MANAGEMENT REPORT

PHASE 2, STAGE 3
Goose TF
Year 6 to Year 10

DATE: 2015/08/21
APPROVED: EMR
FIGURE: 9