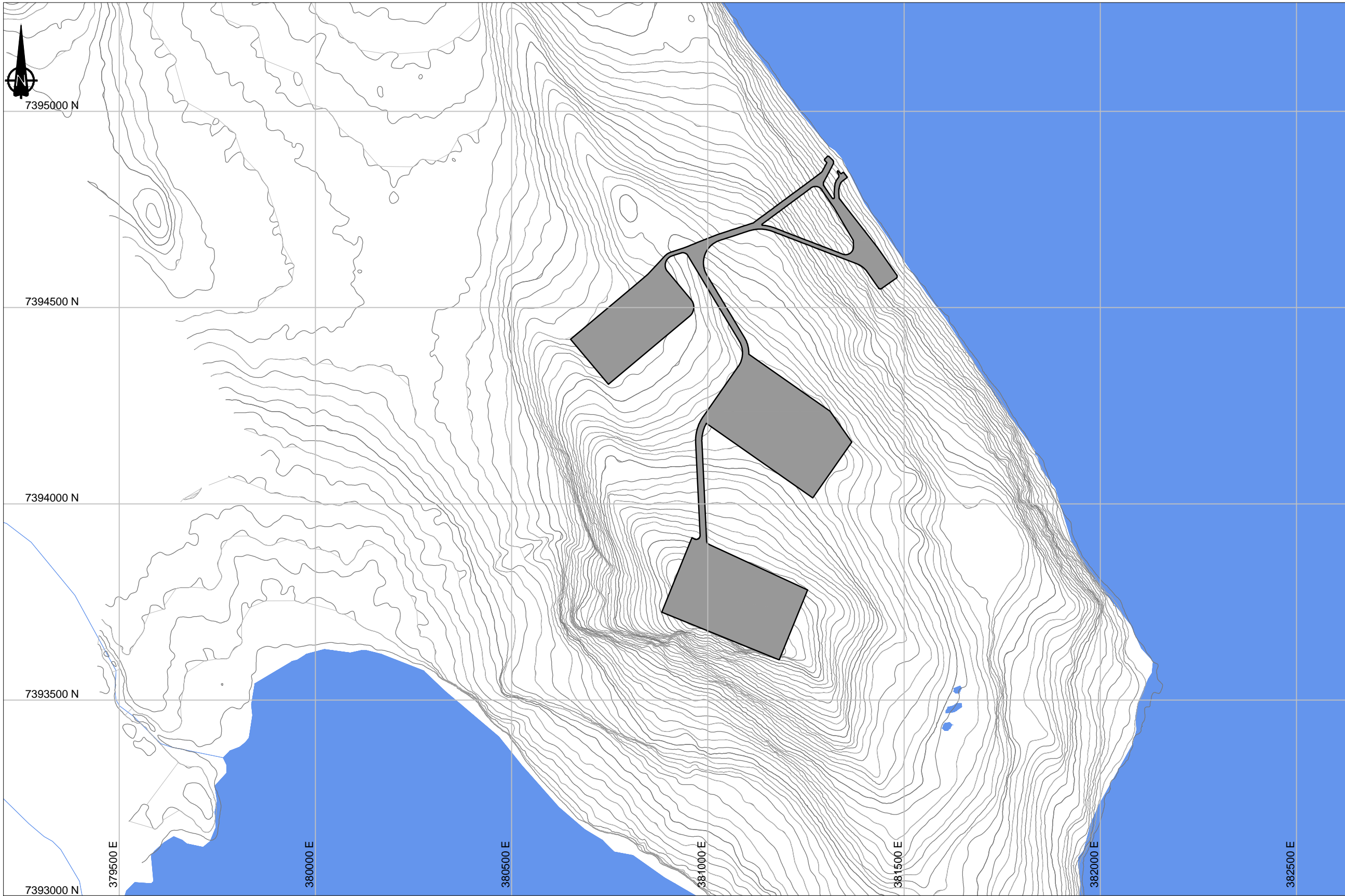


P:\01_SITES\Back River\040_AutoCAD\Water Management FEIS\CS020.008 - MLA Phase 3&4.dwg Plot Date: 9/18/2015 11:30 AM



LEGEND

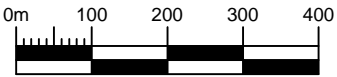
	Major Contour
	Minor Contour
	Decommissioned Pad
	Waterbody

NOTES

1. Contours shown at 2m intervals.

REFERENCE

NAD83 UTM Zone 13.
NTS Mapsheet: 096H



SRK JOB NO.: 1CS020.008
FILE NAME: 1CS020.008 - MLA Phase 3&4.dwg



BACK RIVER PROJECT

SITE WIDE WATER MANAGEMENT REPORT

PHASE 3 & 4

Closure

Marine Laydown Area (Year 10+)

DATE: 2015/09/18	APPROVED: EMR	FIGURE: 13
---------------------	------------------	---------------

Appendix A – Conveyance and Containment Structures Drawing Set

Engineering Drawings for the Back River Goose Site Conveyance and Containment Structures Back River Project, Nunavut, Canada

ACTIVE DRAWING STATUS

DWG NUMBER	DRAWING TITLE	REVISION	DATE	STATUS	Old/Replaced Revisions
A-01	General Arrangement, Sheet 1 of 2	B	September 28, 2015	Issued for Review	Issued for Discussion
A-02	General Arrangement, Sheet 2 of 2	B	September 28, 2015	Issued for Review	Issued for Discussion
A-03	South-West Llama Reservoir Diversion Berm Plan and Profile	B	September 28, 2015	Issued for Review	Issued for Discussion
A-04	West Llama Reservoir Diversion Berm Plan and Profile	B	September 28, 2015	Issued for Review	Issued for Discussion
A-05	West Llama Reservoir Diversion Berm Plan and Profile	B	September 28, 2015	Issued for Review	Issued for Discussion
A-06	East & West Llama Reservoir Diversion Berm Plan and Profile	B	September 28, 2015	Issued for Review	Issued for Discussion
A-07	East Llama Reservoir Diversion Berm Plan and Profile	B	September 28, 2015	Issued for Review	Issued for Discussion
A-08	East Llama Reservoir Diversion Berm Plan and Profile	B	September 28, 2015	Issued for Review	Issued for Discussion
A-09	Llama WRSA Containment Dam Plan and Profile	B	September 28, 2015	Issued for Review	Issued for Discussion
A-10	South Llama Reservoir Diversion Berm Plan and Profile	B	September 28, 2015	Issued for Review	Issued for Discussion
A-11	Llama WRSA Diversion Berm and Containment Dam Plan and Profile	B	September 28, 2015	Issued for Review	Issued for Discussion
A-12	Primary Pond Haul Road Containment Dam Plan and Profile	B	September 28, 2015	Issued for Review	Issued for Discussion
A-13	Umwelt Diversion Berm and Containment Dam Plan and Profile	B	September 28, 2015	Issued for Review	Issued for Discussion
A-14	Ore Stockpile Pond and Diversion Berm Plan and Profile	B	September 28, 2015	Issued for Review	Issued for Discussion
A-15	Ore Stockpile Pond and Diversion Berm Plan and Profile	B	September 28, 2015	Issued for Review	Issued for Discussion
A-16	Echo WRSA Containment Dam Plan and Profile	B	September 28, 2015	Issued for Review	Issued for Discussion
A-17	West Echo Diversion Berm Plan and Profile	B	September 28, 2015	Issued for Review	Issued for Discussion
A-18	East Echo Diversion Berm and Containment Dam Plan and Profile	B	September 28, 2015	Issued for Review	Issued for Discussion
A-19	Echo WRSA Diversion Berm Plan and Profile	B	September 28, 2015	Issued for Review	Issued for Discussion
A-20	Goose Pit Diversion Berm Plan and Profile	B	September 28, 2015	Issued for Review	Issued for Discussion
A-21	TSF WRSA Diversion Berm Plan and Profile	B	September 28, 2015	Issued for Review	Issued for Discussion
A-22	TSF WRSA Diversion Berm Plan and Profile	B	September 28, 2015	Issued for Review	Issued for Discussion
A-23	Saline Water Pond South Containment Dam Plan and Profile	B	September 28, 2015	Issued for Review	Issued for Discussion
A-24	Saline Water Pond Diversion Berm Plan and Profile	B	September 28, 2015	Issued for Review	Issued for Discussion
A-25	Saline Water Pond East Containment Dam Plan and Profile	B	September 28, 2015	Issued for Review	Issued for Discussion
A-26	Saline Water Pond Diversion Berm Plan and Profile	B	September 28, 2015	Issued for Review	Issued for Discussion
A-27	Saline Water Pond Diversion Berm Plan and Profile	B	September 28, 2015	Issued for Review	Issued for Discussion
A-28	Saline Water Pond Diversion Berm Plan and Profile	B	September 28, 2015	Issued for Review	Issued for Discussion
A-29	Typical Dam Sections	B	September 28, 2015	Issued for Review	Issued for Discussion
A-30	Typical Dam and Culvert Sections	B	September 28, 2015	Issued for Review	Issued for Discussion
A-31	Typical Dam Sections	B	September 28, 2015	Issued for Review	Issued for Discussion



Project No: 1CS020.008
Issued for Review
September 28, 2015

