

Full Report Title: The 2020 Site Update Report for the Nunavut Impact Review Board's Monitoring of the Back River Gold Mine Project (NIRB File No. 12MN036)

Project: Back River Gold Mine Project
Project Location: Kitikmeot Region, Nunavut

NIRB File No.: 12MN036
Back River Gold Mine Project Certificate No. 007

Project Owner: Sabina Gold and Silver Corporation
Proponent Contact: Matthew Pickard
Telephone: (604) 998-4175
Address: Suite 202-930 West 1st St.
Vancouver, B.C. V7B 3N4

Report prepared by: Keith Morrison, Manager – Impact Assessment
Contact: Phone: (867) 983-4617; kmorrison@nirb.ca

Pictures in Report: Courtesy of Sabina Gold and Silver Corporation

Table of Contents

1.0	Introduction	5
1.1	BACK RIVER GOLD MINE PROJECT HISTORY AND CURRENT STATUS	5
1.2	BACK RIVER PROJECT COMPONENTS	6
1.2.1	Goose Property	6
1.2.2	Marine Laydown Area-	8
1.2.3	George Property.....	8
2.0	2020 Site Update.....	8
3.0	Public Information Session	9
4.0	Conclusions.....	9
	APPENDIX A: Back River Project 2020 Site Update.....	10
	APPENDIX B: NIRB PUBLIC INFORMATION MEETING	11
1.1	MEETING MATERIALS	11
1.2	ADVERTISEMENTS	12
1.3	MEETING NOTES.....	12

List of Figures

Figure 1: Project Overview Map	6
Figure 2: Potential Development of Goose Property Area	7
Figure 3: Winter Ice Road Corridor Between MLA and Goose Property	8

1.0 Introduction

The Nunavut Impact Review Board (NIRB or Board) was established through Articles 10 and 12 of the *Agreement between the Inuit of the Nunavut Settlement Area and Her Majesty the Queen in right of Canada (Nunavut Agreement)* and is responsible for post environmental assessment monitoring of a Project in accordance with Part 7 of Article 12 of the *Nunavut Agreement*.

In accordance with sections 12.7.1 and 12.7.2 of the *Nunavut Agreement* as well as the Project Certificate No. 007, the NIRB is responsible for the establishment of a monitoring program for the Project, which includes conducting periodic site visits. The objective of the NIRB's site visits are to determine whether, and to what extent, the land or resource use in question is being carried out within the predetermined terms and conditions of the NIRB's Project Certificate issued for the Back River Gold Mine Project, in accordance with (*Nunavut Agreement*, Subsection 12.7.2(b)) as outlined in the NIRB Project Certificate.

The NIRB Monitoring Officer was unable to conduct a site visit in 2020 due to operational constraints and restrictions caused by the COVID-19 pandemic and therefore was unable to visually inspect activities occurring related to the project and assess compliance to the requirements of the Back River Project Certificate. Therefore, to ensure parties are kept up to date at site, the NIRB has developed a Site Update Report based on discussions, updates, and photos provided by the Proponent. This update will form a part of the NIRB's monitoring program.

1.1 Back River Gold Mine Project History and Current Status

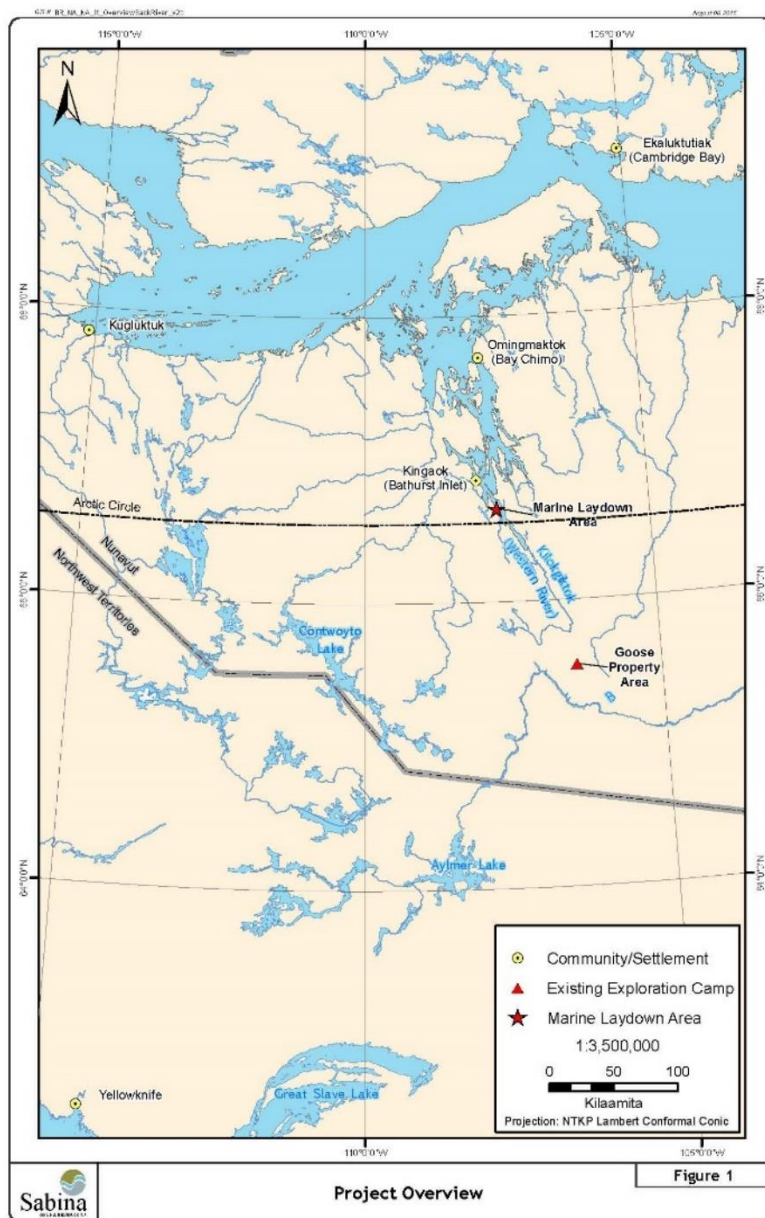
On December 19, 2017 pursuant to Section 12.5.12, Article 12 of the *Nunavut Agreement*, the NIRB issued Project Certificate No. 007 for Sabina Gold and Silver Corp.'s (the Proponent or Sabina) Back River Gold Mine Project (NIRB File No. 12MN036; the Back River project or the Project). On March 13, 2018 Sabina received Type "B" Water License No. 2BC-BRP1819 from Nunavut Water Board which allowed for identified Initial Development Works to commence at both the Goose Property and Marine Laydown Area. In April 2018, Sabina and the Kitikmeot Inuit Association entered into a land tenure and Inuit Impact Benefit Agreement.

On November 14, 2019 Sabina received its Type "A" Water License which allows for the construction and operation activities at the Project. In June 2020 Sabina submitted the 2020 Modification Package with proposed changes to the Marine Laydown Area, Goose Property, and Winter Ice Road. In August 2020, the NIRB provided notification that the proposed changes did not represent a significant modification to the Project and thus required no additional assessment. For a summary of the proposed changes, see the *Nunavut Impact Review Board's Direction Regarding the Back River Project 2020 Modification Package*.¹

For further information on the site history see the previous site update/visit reports and annual reports available at the NIRB's public registry, along with all other documentation related to the Back River Project, at <http://www.nirb.ca/project/124129>.

¹ NIRB File No. 331041

1.2 Back River Project Components



The Back River Project consists of the proposed mobilization, construction, operation, closure, reclamation, and post-closure monitoring of a gold mine operation in the Kitikmeot region of Nunavut. The Project is located approximately 400 kilometres (km) southwest of the community of Cambridge Bay, 95 km southeast of the southern end of Bathurst Inlet, and 520 km northeast of Yellowknife, Northwest Territories. The proponent for the Back River Project is Sabina Gold & Silver Corp. The Back River Project includes two (2) main development areas with a winter ice road interconnecting the Goose Property with the Marine Laydown Area (MLA) located at Bathurst Inlet.

Figure 1: Project Overview Map

1.2.1 Goose Property

The Goose Property will comprise of a processing plant, four (4) deposits (Umwelt, Llama, Echo, and Goose Main) to be mined through open and underground mining methods; an all-weather air strip; a camp facility; and associated mining facilities. Ore mined at the Goose Property would be hauled to ore stockpiles located at the Goose Site where the ore would be processed within an ore processing plant (mill) using conventional gravity concentration and cyanidation techniques at approximately 6,000 tonnes of ore per day. A tailings storage facility would be built south-southeast of the Goose Main open pit for tailings deposition during the first two (2) years of production, with tailings then to be directly deposited

into the mined-out Umwelt open pit and then into the mined-out Goose Main open pit for the remaining mine life. The gold doré bars produced at the processing plant would be stored on-site and then transported off-site by aircraft on a semi-weekly basis.

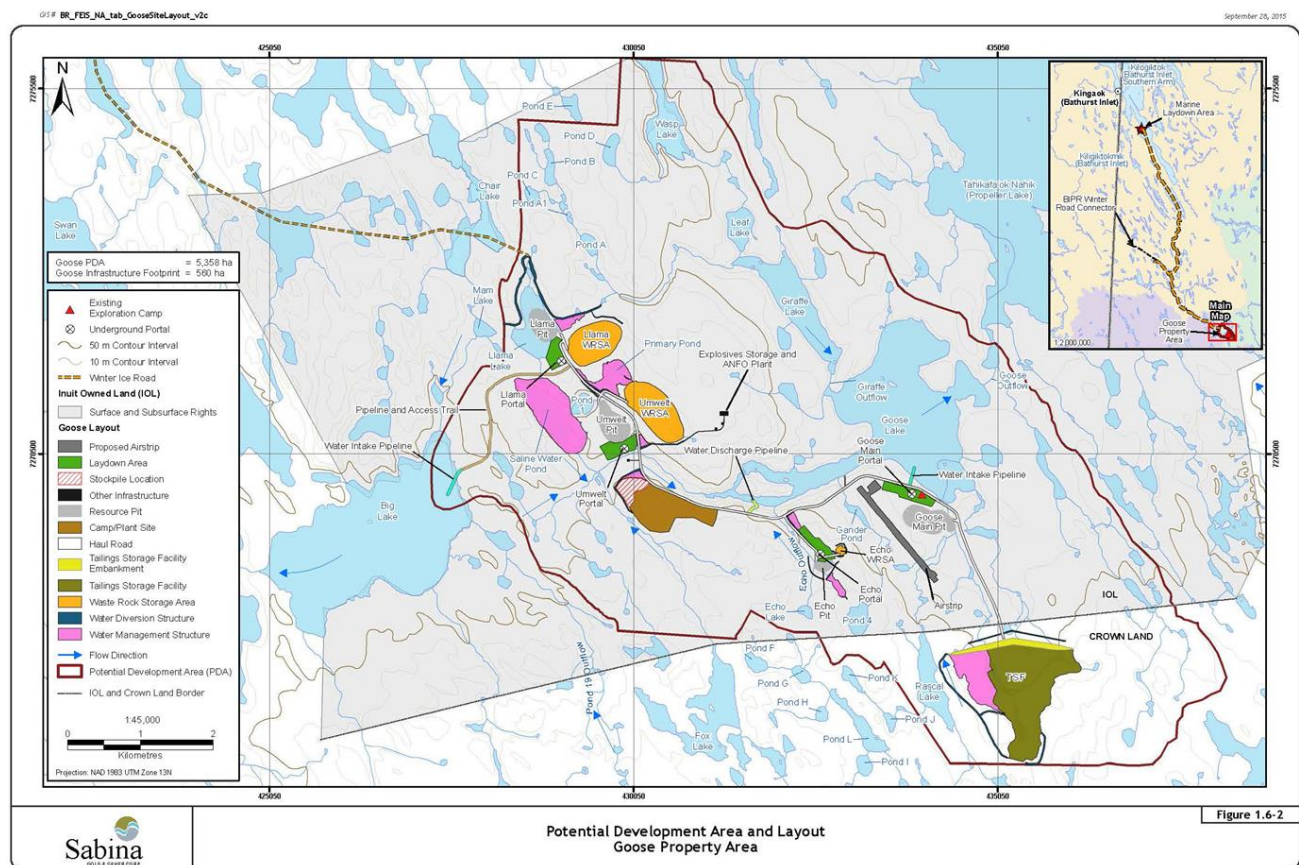


Figure 2: Potential Development of Goose Property Area

1.2.2 Marine Laydown Area-

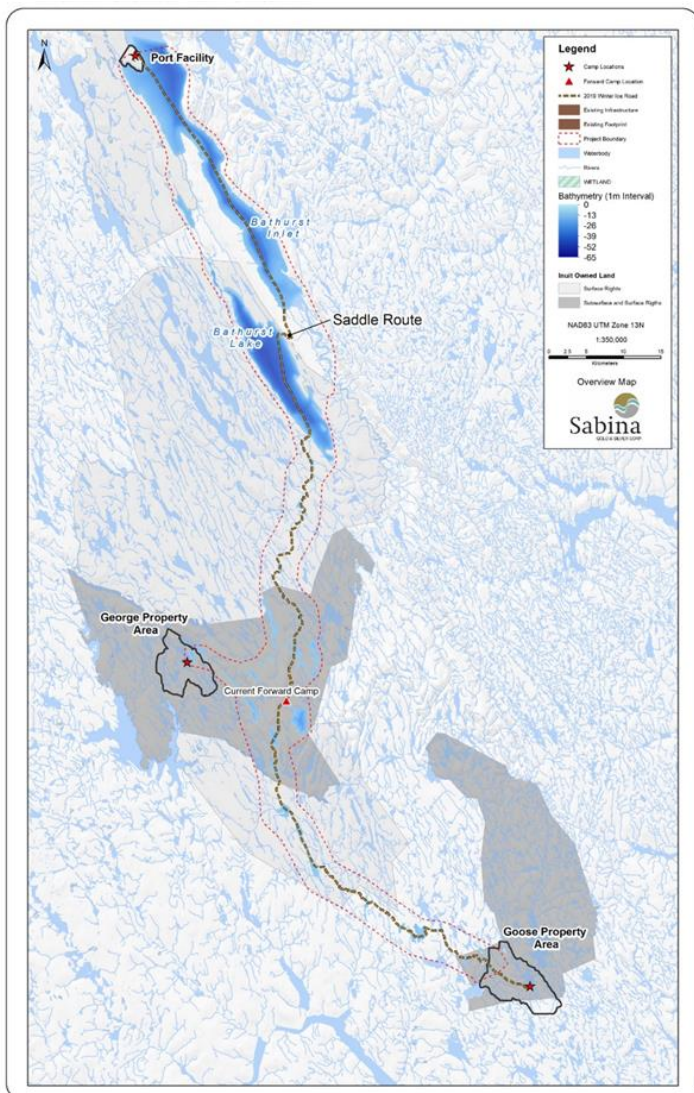


Figure 3: Winter Ice Road Corridor Between MLA and Goose Property

The Marine Laydown Area (MLA) is located approximately 130 km north-northwest of the Goose Property and is the primary staging area for equipment, material, fuel, and other supplies required for the construction and operation of the Project. The MLA will consist of a single barge terminal, laydown areas, a camp facility, and associated storage and maintenance facilities. The Project would be resupplied annually from southern Canada by barge during the open water season. Project materials would then be transported annually from the MLA to the Goose Property using a winter ice road from mid-January to April.

1.2.3 George Property

The George Property is an advanced exploration camp located approximately 50 km northwest of Goose Property and Sabina may construct an annual spur road from the winter ice road to the George Property for transportation of supplies. The continuation of a diamond drilling

based mineral exploration program for the George Property and the Wishbone claim of mineral leases was included within the scope of the Board's assessment for the Back River Project. It should be noted that further advanced exploration (i.e., bulk sampling and infrastructure development) was not included in the Project with the understanding that such activities would require further assessment by the NIRB prior to occurring.

2.0 2020 Site Update

At the NIRB's request, Sabina personnel provided images of the Project area and activities based on a list provided by the NIRB. Sabina also provided a report on its activities carried out in 2020, site status, and COVID-19 procedures which was submitted to the NIRB, the Nunavut Water Board, Kitikmeot Inuit

Association, and Crown-Indigenous Relations and Northern Affairs Canada, which is appended to this report as Appendix A.

3.0 Public Information Session

Pursuant to the *Nunavut Agreement* and the Back River Gold Mine Project Certificate No. 007; the NIRB monitoring responsibilities include providing periodic updates regarding its Monitoring Program for the communities most affected by the Back River Gold Mine Project. To further ensure ongoing awareness of Project-specific terms and conditions, and encourage effective participation throughout the Board's monitoring process, the NIRB scheduled a community information session in Cambridge Bay on August 20, 2020 in conjunction with the update for the Doris North Gold Mine Project (05MN047), Phase 2 Hope Bay Belt Project (12MN001), and the Jericho Diamond Mine Project (00MN059).

For a summary of the NIRB's public information session and questions that were asked, please refer to [Appendix B](#). These comments help the Board identify items that need to be addressed or considered throughout the NIRB's monitoring program for the Back River Gold Mine Project.

4.0 Conclusions

Although the Proponent has provided information updates and photos not conducting a site visit does limit NIRB's ability to monitor the site effectively. While the site is in the early construction phase, it is important to see the ongoing changes and activities at the mine site while they are in operation including the winter ice road and the Marine Laydown Area. As the 2019-2020 monitoring year is the second in which the NIRB monitoring officer was unable to visit the site, it is important that a site visit be carried out in the 2020-2021 monitoring year if circumstances permit.

Prepared by: Keith Morrison
Title: Manager, Impact Assessment
Date: October 22, 2020
Signature:



Reviewed by: Kelli Gillard PAg, CTAJ
Title: Manager, Project Monitoring
Date: October 22, 2020
Signature:



APPENDIX A: Back River Project 2020 Site Update



September 14, 2020

John Roesch
Senior Project Officer
Kitikmeot Inuit Association
Kugluktuk, NU X0B 0E0

Keith Morrison
Technical Advisor II
Nunavut Impact Review Board
Cambridge Bay, NU X0B 0C0

Omer Pasalic
Water Resources Inspector
Crown-Indigenous Relations and Northern Affairs Canada
Iqaluit, NU X0A 0H0

Richard Dwyer
Manager of Licensing
Nunavut Water Board
Gjoa Haven, NU X0B 1J0

RE: Back River Project 2020 Site Update

On January 30, 2020, Sabina provided notice to the NIRB and others that Sabina would be resuming operations at the Back River Project (the Project) on or about March 3. Shortly after Back River re-opened and our exploration program was beginning to ramp up, Sabina decided to delay the planned 2020 program as a result of the COVID-19 pandemic. Our initial team was already on site, but drills were not yet turning. The decision to shut down camp and delay the program was made to ensure the health and safety of our employees, contractors, their families, and the communities they come from. We were, and remain, very cognizant of the COVID related risks the Kitikmeot communities face and reducing that risk was an important part of our decision.

Over the next 3 months, Sabina worked diligently to prepare for the safe recommencement of site activities at the Back River Project. Sabina engaged with the Kitikmeot Inuit Association (KIA), Federal Government, the Government of Nunavut including the Chief Medical Health Officer, Public Health, Economic Development & Transportation, and many others. Once Sabina felt that the pieces were in place to ensure safe recommencement of activities, Sabina provided notification to the NIRB and others of our plans to re-open site on June 30 with the first major inbound aircraft of staff on July 7.

With the Project now successfully and safely open for several months, we wanted to take this opportunity to provide an update to the relevant parties. This update is meant to provide transparency on ongoing exploration and initial construction activities at the Back River Project, plans in 2020 as well as site-specific conditions at the Goose Property, George Property, and the Marine Laydown Area. In addition we have provided information on environmental monitoring programs and baseline data collection as well as the COVID-19 protocols established. As we understand that most, if not all inspections will be cancelled this year, we are hopeful this document provides insight into our activities and ongoing compliance. Sabina does note, that as

communicated to the NIRB on June 25, 2020, we do not anticipate any material changes to our monitoring as a direct result of COVID-19.

COVID Protocols Established

Sabina first established a COVID-19 Task Force in April 2020 to allow for the complete and timely development of protective measures and relevant information for the 2020 field season. Sabina developed a COVID Operational Framework document which established many of the measures needed to reduce the risk of COVID affecting our operations. The current version of the Operational Framework has been included in Appendix A.

Sabina then worked to determine and finalize our entry process into Nunavut, as well as travel through the NWT, with both Chief Medical Officers of Health. In order to gain access to Nunavut, all personnel must follow the Sabina pre-screening processes (temperature checks, questionnaires, and medical check in Yellowknife before boarding the charter to site) and they must complete one of two Nunavut forms. Sabina then issues these to Nunavut's Chief Medical Officer of Health to get a travel exemption into Nunavut. Each individual must go through this process and each individual must receive an exemption letter from the Chief Medical Officer of Health. Thus far, all personnel proposed have successfully completed this process.

Sabina has recently established Real Time PCR Testing for COVID in Edmonton prior to Southern personnel departing for site. This program was launched during the August 31st/September 1st rotation and will remain in place moving forward. These Real Time PCR Tests are Health Canada approved and testing is completed by Datametrex and Alberta Paramedic who have recent experience with other resource companies in Nunavut.

Goose Property Status Update

As noted previously, Sabina's Goose Camp re-opened in June 2020. Upon re-opening the camp infrastructure and equipment were inspected as well as all fuel storage and fuel storage areas. All areas inspected were of sound status, and no signs of wildlife or other damage were noted. Pursuant to Sabina's Type A Water Licence (2AM-BRP1831), water samples were taken from fuel storage areas where ponding melt and rainwater existed. The results of that water sampling were compared to regulatory requirements and discharge criteria were met; discharge notification was subsequently received from the Crown-Indigenous Relations and Northern Affairs Canada (CIRNAC) Water Resources Inspector upon review of the results, and the water discharged. Since startup, Sabina has monitored various environmental aspects of the operation and has experienced no reportable incidents or spills.

As anticipated, Sabina did have groups of caribou move through the Back River Project in late July and early August. Based on collar data provided by the Government of Northwest Territories these were from the Beverly/Ahiak herd and not the Bathurst herd. Over this time Sabina implemented the agreed upon mitigations including halting heavy equipment, blasting, fixed wing & helicopters flights. The groups of caribou were still on the move during this period and thus

only interacting with site for a few hours. Mitigations were observed to be effective with the herd continuing their migration. Additional details will be provided in the annual reporting.

Sabina anticipates the Back River Project, and primarily the Goose Property, will operate through to December 2020. It is anticipated that the population at Goose Camp will remain below approximately 100 people at a time for the remainder of 2020.

Exploration activities planned to occur at the Goose Property throughout the remainder of 2020 may include:

- Diamond drilling, focused on defining and expanding the high grade corridor of mineralization within the Umwelt underground, initially at the Vault Zone and in the up-plunge direction towards the bottom of the proposed pit. Further evaluation of new discoveries at Umwelt, Llama and Nuvuyak as well as already defined resources at Goose main and Echo will also occur.
- Commence works for the future establishment of an exploration decline which will allow us to fully evaluate and further explore the high-grade Umwelt deposit.
- Airborne geophysics.
- Mechanical stripping (i.e., trenching) to expose the potential for geologic elements relating to gold mineralization and exploration potential hosted in the Goose Property area bedrock.
- Outcrop mapping activities at a regional scale to better identify and utilize surface geology.

Initial Construction activities which are planned to occur at the Goose Property throughout the remainder of 2020 may include:

- Extending the all-weather airstrip to allow aircraft of different sizes to land year-round with an increased degree of success.
- Site road network expansion including watercourse crossings towards the Process Plant Pad.
- Additions to site infrastructure including laydown areas.
- Geotechnical drilling.
- Quarrying and crushing operations.

Based on 2020 activities all required security under Part C, Items 1 & 2, of the Back River Project Type A Water Licence (2AM-BRP1831) has been furnished to KIA and CIRNAC. Based on current plans Sabina anticipates an additional payment for the underground advancement of Umwelt in early 2021.

Environmental monitoring and baseline programs occurring at the Back River Project consist of Atmospheric, Archaeology, Water Quality, Fisheries, Wildlife, Geochemical/ Geotechnical, and Vegetation programs in 2020.

The Goose Property meteorological station underwent full calibration and maintenance in September 2020. All meteorological sensors such as the wind sensor, solar radiation sensor, barometer, snow depth sensor, etc., were factory calibrated prior to installation and swapped out in the field. The meteorological stations datalogger was upgraded to a newer model, and its Operating System was updated. Any data analysis of the meteorological data will be provided in annual reporting.

Fisheries programs were completed to address requirements related to the eventual construction of the Rascal Stream Diversion, which will connect Rascal Stream East to Gosling Pond with flows continuing through Rascal Stream West and entering Goose Lake. The Rascal Stream Diversion will provide Arctic Grayling with continued access to spawning habitat with the eventual extension of the Airstrip. In September 2020, construction of downstream velocity mitigation features (i.e., 15 instream rock weirs) was completed downstream of the Rascal Stream Diversion in Rascal Stream West. Habitat data (stream depths, widths, velocities, discharge, etc.) was collected at each rock weir location to characterize stream conditions before and after installation.

All additional applicable data will be provided via annual reporting.

Goose Property Photos



Figure 1. Quarry Operations at the approved Goose Quarry just West of the Airstrip (July 2020).



Figure 2. Phase 1 of the Airstrip Extension Activities to a strip length of 4150' (August 2020).



Figure 3. Exploration Drilling Crews waiting for Crew Change via Helicopter (August 2020).



Figure 4. Expanding the Goose Camp Kitchen to Facilitate Social Distancing (July 2020).



Figure 5. Constructing Instream Velocity Mitigation (Rock Weirs) in Rascal Stream West (September 2020).



Figure 6. Goose Meteorological Station Maintenance and Calibration (September 2020).

Marine Laydown Area (MLA) Status Update

The MLA was inspected on July 19, 2020 and occupied for environmental work from August 22 to August 31, and no signs of wildlife or other damage were noted, equipment was started, and all fuel storage and fuel storage areas were inspected. Pursuant to Sabina's Type A Water Licence (2AM-BRP1831) water samples were taken from fuel storage areas where ponding melt and rainwater existed. The results of that water sampling were compared to regulatory requirements and discharge criteria were met; discharge notification was subsequently received from the CIRNAC Water Resources Inspector upon review of the results, and the water discharged. The 10M liter fuel tank which is initially constructed at the MLA Bulk Fuel Storage Area, and its associated pad, wintered well and showed no signs of erosion or thermal degradation.

There are currently no plans to receive supplies via shipping at the MLA in 2020. Activities planned are primarily environmental monitoring programs and baseline data collection. Environmental monitoring and baseline programs occurring at the Back River Project consist of Atmospheric, Archaeology, Water Quality, Fisheries, Wildlife, Geochemical/ Geotechnical, and Vegetation programs in 2020.

Sabina conducted environmental surveys along the Winter Ice Road (WIR) alignment focusing on sources of aggregate for the proposed WIR sub-base upgrades, as well as the service/emergency camps; surveys included:

- Detailed mapping of borrow sites.
- Wildlife habitat, including caribou movement paths and grizzly bear denning potential.
- Cultural Heritage (archaeology) potential.
- Vegetation and ecosystem characterization and surveys for rare plants, invasive species, as well as general heath tundra.
- Surface hydrology.
- Geochemical properties sampling.

The results of mapping and field surveys of sources of borrow material will be summarized in a report and provided prior to construction of the WIR sub-base upgrades and/or the service/emergency camps.

Sabina also serviced the Bathurst Inlet meteorological station tower and its sensors for ultimate re-use at the Goose Property meteorological station, successfully executed archaeological mitigation at the MLA, and opportunistically revisited WIR vegetation monitoring plots established to photograph and document any observable changes.

All additional applicable data will be provided via annual reporting.

MLA Photos



Figure 7. Aerial Image of Sabina's Marine Laydown Area (MLA) (August 2020).



Figure 8. MLA Camp and Bathurst Inlet on a Sunny, Calm Day (August 2020).



Figure 9. MLA Accommodations (August 2020).



Figure 10. Aerial Image of Sabina's MLA Freight Storage Area (August 2020).

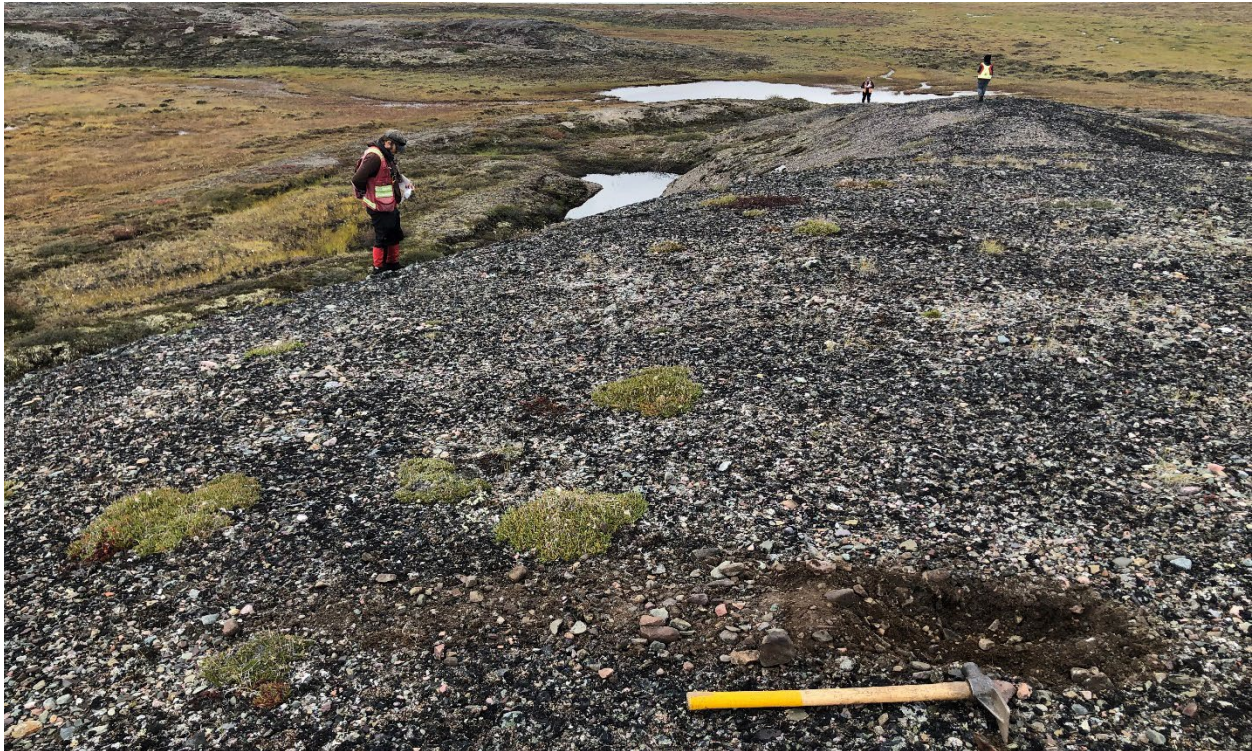


Figure 11. Survey of Potential Quarry Location for Proposed WIR Sub-base Upgrades (August 2020).



Figure 12. Survey of Potential WIR Service/Emergency Camp Location (August 2020).

George Lake Project Status Update

George exploration camp was inspected on July 19, 2020. The camp is in good condition, much the same as it was last year during Sabina's check-in. Dips were taken of the bulk fuel tanks, the generators were started, equipment was started, and camp infrastructure was fully inspected. No signs of wildlife or other impacts to camp infrastructure were noted. The bulk fuel tank engineered berm was inspected and standing melt and rainwater in the engineered berms were minimal and near fully evaporated.

No exploration and/or initial construction activities are planned at the George Project in 2020. Sabina did complete an August airborne geophysics survey in the George Project area, however operations were fully based and supported out of the Goose Camp.



Figures 13 & 14. Airborne geophysics at George Lake Property and Aerial Image of George Camp (July 2020).

Appendix A

Back River Project

COVID-19 Operational Framework Document

Sabina Gold & Silver Corp.

COVID-19 Operational Framework – Back River Project

Version 4

Sabina has evaluated the risk of recommencing activities at the Back River Project (Goose Property and Marine Laydown Area) in the context of the current COVID-19 pandemic. Sabina is confident that with proper risk mitigation and elevated health and safety practices that operations at Back River can be safely carried out for the remainder of the 2020 field season. This Framework details the requirements, practices, and new restrictions to be put in place for operation of the Project. As new information becomes available this document, and any associated guidelines, will be evaluated by management and may be updated as required.

Those measures flagged with an Asterix () may be relaxed or removed once all personnel have been on site for 14 consecutive days and no personnel are experiencing symptoms. The Operations Manager, or designate, will oversee the decision to relax or remove requirements.*

General

- All personnel are required to meet or exceed federal, territorial and provincial public health requirements in their home location including the requirements to limit exposure through the use of 'bubbles', limiting travel and exposure points. For additional information please see:
 - <https://www.canada.ca/en/public-health/services/diseases/2019-novel-coronavirus-infection/symptoms/provincial-territorial-resources-covid-19.html>, and
 - <https://www.canada.ca/en/public-health/services/diseases/coronavirus-disease-covid-19.html>
- Personnel traveling from the south are required to have COVID-19 PCR tests completed prior to flying north to Yellowknife. Only those individuals with confirmed negative results will be permitted to access site. Those who meet the requirements of the NWT bubble are not required to be tested prior to entry.
- Sites are required to utilize an inbound flight schedule limiting personnel flights into camp to a few days (2-3 consecutive days long) every 3 weeks.
- Sites are required to utilize a personnel rotation schedule of approximately 3 weeks in X 3 weeks out, wherever possible. This will minimize the number rotations required in the 2020 field season and reduce potential for exposure. On occasion some personnel rotations may extend longer than 3 weeks to allow for overlap of key positions (e.g. 4 weeks in X 2 weeks out) or shortened to less than 3 weeks (e.g. 2 weeks in X 4 weeks out). Various rotations are acceptable if they align with the inbound flight schedule.
- Individuals or groups of personnel (termed guest) who are required to access site for a short period may access site outside of the inbound flight schedule if they can remain isolated from the general population during their time onsite. Should access be required the Operations Manager, or designate, will oversee this access.

- Personnel are permitted to leave site during their rotation. However, they may not be able to re-enter the site until the start of the next available rotation. Should re-entry be required the Operations Manager, or designate, will oversee this process.
- Sabina recognizes the COVID-19 pandemic has created new stresses and concerns for some individuals and the company takes the mental health and well-being of all its employees seriously. Sabina's Employee and Family Assistance Program (EFAP) remains available for employees.
- * All personnel are required to meet or exceed best-practices regarding social distancing and avoid cross contamination including maintaining a 2 meter (6 foot) spacing between individuals wherever possible and limiting common touch points. Should appropriate social distancing not be possible masks and other PPE will be required.
- * No maximum group gathering size will be established if social distancing and requirements to limit touch points can be followed.
- * Operational meetings, toolbox meetings, etc., may be staged in two or more parts to accommodate personnel numbers and proper physical distancing.
- * All personnel are required to practice enhanced hygiene practices including washing or sanitizing hands prior to entering shared facilities (office, kitchen, washrooms, etc.) and personnel must use/dispose of masks, gloves and other specialized protective equipment as directed.
- All personnel will be provided with appropriate protective equipment, hand washing stations/hand sanitizer, and guidance on reducing COVID-19 risks.
- Sites are required to develop guidelines to ensure enhanced cleaning is in place in all work and common areas.

Travel

- All reasonable efforts are to be made to limit exposure during travel from a person's home to the sites.
- All personnel are required to use masks and follow enhanced hygiene practices, including hand washing and sanitizing, for all travel segments. Once individuals are in their assigned hotel rooms masks may be removed.
- Should last minute changes to personnel be required efforts will be made to accommodate, however, changes made less than 10 days prior to departure may not be possible due to Government of Nunavut entry requirements.
- All personnel are required to isolate while in Yellowknife. This includes between flights as well as any overnight required.
- In line with government preferences no personnel will be hired from Nunavut or Northwest Territories except for those residing in Yellowknife and communities in NWT which are road accessible to Yellowknife. Sabina will frequently monitor government direction and modify this requirement as appropriate.
- All personnel are required to travel on flight combinations assigned. No modifications for personal preference will be made (i.e. preferred airlines, flight times, personal reasons, etc.).
- All travel is required to be completed using as few flight combinations as possible.
- Wherever possible personnel are to be booked on the same commercial flights and at the same hotels.

- Wherever possible hotels in Yellowknife should be avoided.
- Hotel rooms are not to be shared.
- All personnel are required to report directly to their assigned hotel and remain in their rooms except as necessary to obtain 'take out' food or other essentials.

Sites may work with contractors to meet the travel requirements or may choose to complete all requirements internally.

Monitoring & Reporting

- All personnel are required to self-monitor for COVID-19 related symptoms and perform temperature checks each day for 14 days prior to departure from their home. Records are to be maintained and provided when requested. The Sabina COVID Task Force may permit shorter monitoring periods when last minute changes to personnel are required.
- All personnel are required to complete and submit Sabina's health questionnaire 1 day prior to departure from their home.
- All personnel are required to complete the appropriate Government of Nunavut form 5 days prior to arrival in Nunavut. This form is to be provided to Sabina for submission to the Government of Nunavut to grant exemption from the current travel ban into Nunavut.
- All personnel are required to participate in additional tests and provide additional information on their final day of travel (to be completed in Edmonton or Yellowknife prior to boarding the charter flight to site).

Testing

- Personnel traveling from the south are required to have COVID-19 PCR tests completed prior to flying north to Yellowknife. 48-72 hours before the test, and following the test, personnel are requested to isolate as much as possible except as required for travel.
- Those who meet the requirements of the NWT bubble are not required to be tested prior to entry.
- Personnel who travel to site during the set site rotation will receive testing through Sabina's private testing firm (Datametrex) in Edmonton the day before they travel to site.
- Personnel who have an exemption to travel to site off the set rotation must be tested through the relevant Public Health system or through Sabina's private testing firm (Datametrex).
- Only those individuals with confirmed negative results will be permitted to access site.
- Those with positive results are required to isolate in their location until cleared by the relevant Public Health system – generally this could be 10-14 days if a confirmed positive result occurs.
- Those with inconclusive results are required to isolate in their location and await further instructions.
- Following a positive or inconclusive test result it is the contractor's responsibility to oversee subsequent testing, isolation requirements, and other measures as directed by Sabina or the relevant Public Health system.
- Those with a positive test must retest negative twice (either through the private testing firm, or the relevant Public Health system) before being granted future access to site.

Camp Accommodations

- At the sites all personnel are required to have their own separate accommodation (private rooms or physically split cabins).
- At the sites approximately 10% of available rooms are to be kept free for potential isolation needs or other uses (unanticipated guests, maintenance, etc.).
- Based on the current design of the Goose Property and Marine Laydown Area camps capacity will be capped at approximately 90 and 35 personnel respectfully.
- * No personnel are permitted in anyone else's room. Should access be required the Operations Manager, or designate, will oversee this access.

Camp Auxiliary Services

- * Site washrooms, dry's, and washing facilities are to be assigned to onsite personnel. Individuals are to use only the facilities they are assigned to. The Operations Manager, or designate, will oversee the assignments.
- * The sites social locations including TV tents, indoor smoking areas, saunas, etc. will remain closed if social distancing cannot be maintained. Kitchen and office space may not be used to socialize. The Operations Manager, or designate, will oversee which facilities may be used for social events.
- * Group recreational activities may be permitted if social distancing requirements can be followed. The Operations Manager, or designate, will approve any group recreational activities.
- * Sites are required to limit the use of office space and boardrooms to meet or exceed best-practices regarding social distancing.
- * Most common area phones are required to be removed. Should personnel require access to a phone the Operations Manager, or designate, will oversee the access.
- Where possible internet speeds are to be increased at sites to allow for individuals to communicate frequently within and outside the camp. It is recommended that personnel use their own devices for this purpose. Devices should not be shared.
- It is recommended that ample radios and charging station be made available to limit the need to share these devices.

Camp Food Service

- * Sites are required to develop guidelines on food preparation and service to meet or exceed best-practices regarding social distancing and cross contamination via touch points.
- * Sites are required to stagger food service times to adhere to best-practices regarding social distancing and avoidance of cross contamination via touch points.
- * Sites are required to modify food service areas to adhere to best-practices regarding social distancing and avoidance of cross contamination via touch points. Self-serve areas are to be removed.

Supplies

- * Sites will ensure that necessary PPE, cleaning products and other specialized equipment are available onsite, or can be made available on short notice, to meet day-to-day requirements as well as emergency medical conditions.
- * Where possible perishable food shall be transported into the sites separately or wrapped to protect from cross contamination.
- * Where possible the sites are to isolate material shipped into site in an appropriate storage location for 72 hours prior to use. Perishables food and supplies required to keep site operating may be used immediately but guidelines must be in place to limit potential cross contamination.

Worksites

- * Sites are required to develop guidelines for all worksites to limit exposure including meeting or exceeding best-practices regarding social distancing and avoidance of cross contamination wherever possible.

Helicopters

- * Sites are required to develop guidelines for the use of helicopters to limit potential exposure.

Fixed Wing

- * Sites are required to develop guidelines for the loading and unloading of planes to limit exposure.
- * Pilots who do not need to remain at the sites are not to leave the airstrip area. If a pilot must access areas outside of the airstrip the Operations Manager, or designate, will oversee their movement.

Guests & Short Term Visitors (Personnel which arrive at the sites outside of the inbound flight schedule)

- Guests may be allowed at site with approval of the Operations Manager under special circumstances.
- Guests are not permitted to use any of the common areas and must remain isolated from the general population.
- The sites are required to develop guidelines for all guests to meet or exceed best-practices regarding social distancing and avoidance of cross contamination.

Symptom Monitoring, Testing & Suspected Case Management

- Sites are required to monitor all personnel during their time onsite.
- Sites are required to consider options for onsite testing when suspect cases are identified, or where community transmission is suspected.
- Sites are required to develop guidelines for addressing suspected cases including medical treatment, isolation, labour disruption and transportation off site.

Discipline

- It is expected that all personnel make honest representations about their health in all personal monitoring, health questionnaires and company records. The safety of fellow workers depends on it.
- Those violating the requirements of this framework may be removed from site on the next available flight and may face additional disciplinary measures. The Operations Manager, or designate, will oversee discipline.

APPENDIX B: NIRB PUBLIC INFORMATION MEETING

To further ensure ongoing awareness of Project-specific terms and conditions, and encourage effective participation throughout the Board's monitoring process, the NIRB scheduled a community information session for TMAC's Doris North Gold Mine Project (05MN047) and Phase 2 Hope Bay Belt Project (12MN001), Sabina's Back River Project (12MN036) and an update on the Jericho Diamond Mine (00MN059) site stabilization and remediation activities. The sessions consisted of an afternoon open house (2:00-4:00pm) and an evening update meeting (7:00pm-9:00pm) at the Luke Noviligak Community Hall in Cambridge Bay on August 20, 2020 and were open to all members of the public, subject to COVID-19 limits on the number of people gathered.

All in attendance, including government, industry representatives and media, were asked to sign in and identify the community or organization they represented. The afternoon session had no attendance, and the evening session has three (3) people. The NIRB Staff in attendance included Keith Morrison, Technical Advisor II/Monitoring Officer for Doris North, Phase 2 Hope Bay, Back River, and Jericho; Karen Costello, Executive Director; Kelli Gillard, Manager Project Monitoring; Emily Koide, Technical Advisor; and Francis Emingak, Jr. Technical Advisor.



The NIRB Monitoring Officer made a PowerPoint presentation covering each Project and provided a general update of the NIRB's Monitoring Process, focussing on updates to projects, including an overview of project activities and key components, and issues identified through the project specific monitoring programs. The presentation also outlined the ways in which the public can participate in the Board's monitoring process. The public was encouraged to comment and ask questions relating to the NIRB's process, activities undertaken, project effects, and any concerns related to the Project. Both written and verbal comments were accepted and verbal comments were recorded by NIRB staff members.

1.1 Meeting Materials

At the public meeting, the following materials were provided by the NIRB:

- The NIRB's PowerPoint presentation (in English and Inuinnaqtun)
- Comment Forms (in English and Inuinnaqtun)

All document received and pertaining to this project, including copies of consultation materials, the presentation, and advertisements, can be accessed from the NIRB's online public registry at:
Doris North Gold Mine: www.nirb.ca/project/123632
Phase 2 Hope Bay: www.nirb.ca/project/124148
Back River Project: www.nirb.ca/project/124149.
Jericho Diamond Mine: www.nirb.ca/project/123035

1.2 Advertisements

The NIRB advertised the meeting through radio, poster, and online through Facebook in Cambridge Bay both in English and Inuinnaqtun in the three (3) weeks prior to the meeting.

1.3 Meeting Notes

The following sections summarize the comments and concerns that were raised both verbally and in writing at the community information sessions. The comments help the Board identify items that need to be addressed or considered throughout the NIRB's monitoring program for each.

Doris North / Hope Bay Belt

Tailings Impoundment Area:

- Is Tails Lake still full of water?
- They fished out Tails Lake?

Operations:

- Are they still working at Madrid?
- How long until they start hiring again?

Back River Gold Mine

COVID-19 Restrictions:

- Comment from Sabina rep that current restrictions on Nunavut employees are likely to continue until December.

Jericho Diamond Mine

Open Pit:

- Someone once fell and slid down the pit.