



2015mi Inimi Pulaaqtut Naunaiqtaminngnik Uqariyait

NIRBkut takuffarutait taffumuna
**Sabiinatkut Akituyut Quryiktallu, Qiblariktullu Uyaqqat
Corporrationgnata Tunuhingmi Kugak Havaktaat**



Nunavunmi Avatiliriryuakkut Katimayiit

Kikturidjiuvik 2015

**Tamaat Naunaihimayut
Ukauhiit Naunaitkutaa:**

2015mi Inimi Naunaiqtamingnik Uqariyaitta hapkua
piblugit Nunavunmi Avatiliriryuakktut Katimayit
Takuffarutaa tafuma mikhagut Sabiinatktut Akituyut
Quryiktallu, Qiblarikullu Uyaqqat Corporationgnata
Tunuhingmi Kugak Havaktaat (NIRB nuanaikutaa
Kihittitaani 12MN036)

**Havaktaunahuaq:
Havaktaunahuaq Inaa:**

Tunuhingmi Kugak Havaktaat
Kitikmiut Nunaani, Nunavutmi

Havaktaunahuap Nanminia:

Sabina Gold and Silver Corporation
930 West 1st Street
North Vancouver, BC V7T 3N4

**Aulapkangnahuaqtata
Uqaqatigiylumakpat:**

Matthew Pickard, Ikhivautliup tuklia, Hilaqyuaqtuliqiyiitlu,
Ikuppivvilirijikkut
(888) 648-4218

Hivayautaa:

Inani Pulaaqtut Ublua:

Kikturidjuvikmi 16, 2015

**Uqariyauyukhat
Hannaihimayait Uuma:**

Nunavut Impact Review Board
P.O. Box 1360
29 Mitik Street
Cambridge Bay, NU X0B 0C0
Hivaayautaa Akiittuq: (866) 233-3033
Hivayautaa: (867) 983-4600
Faxtauq Naunaitkutaa: (867) 983-2594

Adjiliuhimayait Taffuma:

NIRBkut Havaktiit

Hivulliqaak Adjiliuhimayut:

Inimi Pulaakhimayut talvani Kangnup Tahia Tangmaaqvia

Naunaitkutani hivulingmi Tuklianilu hunat ittut

1	Hivuani Imaa Ittuq.....	5
2	Huliyumaplutiqaq Inimut Pulaaqtut.....	5
3	Inimun Pulaangnahuat Hannaiyuatait	6
4	Upautihimayut	6
4.1	Sabinamit Iluayut	6
4.2	Ikhivayiit Katimayiit Iluayut.....	6
4.3	Katimayuni Havaktut.....	7
4.4	Katimayiit Ahikpani Maligaliutainik Kauyimapkaiyiit	7
5	Inimut Pularutaa	7
5.1	Naunaitkudjuhikhaa	7
5.2	Aulluatait tangmaakvingmut utikhutiklu	9
5.3	Inaata Ilituripkuata Iluayuniklu Ilihimapkangnahuahugit	9
5.4	Goose Tangmaakviani Pihuyaqtut	10
5.5	Havaktatik qanuqtut inmanaat takummataa.....	14
5.6	Georgemi Pihukpaktilugit	15
5.7	Iluayut Apiqqutait	17
6	Hulilukaarutikhait takuukaaqhugu tahaffuma ininut Pulaaqaaqhutik	18
	Naunaitkutaani A: Tunuhingmi Kugak Havaktaat Ilituripkauhia titirqittimayuq	A
	Naunaitkutaani B: Nunaanni Takupkaktauyuk Qaritauyakkut ublumimut, Immaktilirviani 2015mi.....	B
	Naunaitkutaani C: Nunaulyaq – George inaani takummataa	C
	Naunaitkutaani D: Nunaulyaq – Goose innani takummataa	D
	Naunaitkutaani E: Nunaulyaq – Tagiungmiutat Nalaviani inaata takummahia.....	E
	Naunaitkutaani F: Nunaulyaq – Ukiumi hikumi apqut aulavia	F
	Naunaitkutaani G: Qaritauyakkut – Ilituripkautaa	G
	Naunaitkutaani H: Qaritauyakkut – Havangnahuaktainnik Ilituripkaidjutaa	H
	Naunaitkutaani I: Qaritauyakkut – Akyaqtaqtuutigut tahamnalul Tariungmiutat Nalaviani takummataa. I	I
	Naunaitkutaani J: Qaritauyakkut – Iqakunikkut tahamnalul Imaqkut takummataa	J
	Naunaitkutaani K: Qaritauyakkut – Angutitigut tahamnalul Ukiumi Apqut takummataa.....	K
	Naunaitkutaani L: Hiqinnuyakkut qunnialihimayuq – Bathurst tuktutait auladjutait	L
	Naunaitkutaani M: Hiqinnuyakkut Qunnialihimayuq – Beverly tuktutait Auldjuhiit	M

Adjiliuhimayut Naunaitkutait

Adjiliuhimayut 1: Ikiangmin tuatuktauuyuk Tariungmiutat Nalaviani nuna	9
Adjiliuhimayut 2: Ikiangmin tuatuktauuyuk Goose tangmaakvia inani	9
Adjiliuhimayut 3: NIRBkut tunnahuktitauyut Sabinatkut havaktiinnit Goose tangmaakviani mitakviani .	10
Adjiliuhimayut 4: Mr. McLeod tuhaapkauiyut NIRBkut ikhivayiit katimaqatigiinnut havaktiinnullu	10
Adjiliuhimayut 5: Goosemi tangmaakviani nayugakhat.....	11
Adjiliuhimayut 6: Talvaniginnalimaittut ikulattivik.....	11
Adjiliuhimayut 7: Ikulattiviup akyakuukvia	12
Adjiliuhimayut 8: Takummata talvaniginnalimaittut iqquakuukvia takuriyakhamingniklu hunavalunik tutquqhimavia.....	12
Adjiliuhimayut 9: Iqqakuukviup tutquqhimavia.....	12
Adjiliuhimayut 10: Goose tangmaakviata hilahiudjutta iglukpak.....	13
Adjiliuhimayut 11: Pihuktut mikhaanut Goose tangmaakvianun qatakyuit tutquqhimaviit	13
Adjiliuhimayut 12: Takummataa havakviata inaani Kanuup Iniluanani algakhimayut tamnalu halumailrunik tutquqhimavia.....	14
Adjiliuhimayut 13: Mr. Pickard tuhaapkauiyut NIRBkut Ikhivayiinnut Katimayiinnik Havaktiiniklu	14
Adjiliuhimayut 14: Ikiangmin takummataa George tangmaakvia inani.....	15
Adjiliuhimayut 15: Tingmit atukhimayaat akyaktaqhugit pulaaqtaqtut ilauyut	15
Adjiliuhimayut 16: Katitiqhimayut tautugakhait tahapkualu Qayaqtuutait atuqpagait tutquqhimaviat	15
Adjiliuhimayut 17: Tutquqhimaviit tamayaqaqviit Qinkhiayullu havaktiita Ingilrutait	16
Adjiliuhimayut 18: Talvaniginnalimaittunut tutquqhimaviat iqquakuunut	16
Adjiliuhimayut 19: Helikoptap mittaquia	16

1 Hivuani Imaa Ittuq

Aullahingmat talvani Nunavunmi Avatiliriryuakkut Katimayiit (NIRB tamnaluuniin Katimayiit) Maligakhautait kinguliriit,¹ naunaitkutani 27:

Tuhaapkaktautinnagit uqarumayut, Tuhaapkautillugitluunniit, Ikhivayiit qanuriliugumayamingnik, nanminiriyamingnik aturumayamingnik pitaaktut taimaaluunniit amigaitqiyaukpata piyumayut, pulaarumayut inimut. Ikhivayut katimaqatigiit tahaffumuna mikhaagut qanuriliungniangmanata inimut pulaarumayunut hivuani. Iliturrpakkugitlu pulaarumayut titiqqitlugit qanuqtut piniangmanata. Ikhivayut Katimaqatigiini apiritpaaktait tahapkua pulaarumayut nunallanit allalu pulaarumayut maliktiqaqlutik Ikhivayiinnik pulaaqtaqtut inimut.

Uqaqhimayut katimayiit uqarumayut tuhaapkaktaungmata talvani Tarium Hikutikviani 2014mi Iqaluktuuttiami iluapkhugu tahaffumuna NIRBkut takuukhimayaatigut tahapkununa Sabinatkut Akituyut Quryiktallu, Qiblariktullu Uyaqqat Corporationkut (Aulapkangnahuaktata tamnaluuniin Sabina) Tunuhingmi Kugak Havaktaat, NIRB nuanaikuta Kihittitaani. 12MNO36 (Tunuhingmi Kugak Havaktaat, Havaktaallu), Katimayiit imaa piyumayut ihuatqiyauniangmat ikhivayiinu havaktiinnilu ihuahaigumik pulaanahuaqtuni inimut havaktauyumut auyami ima qaulatillugu.²

Ihumagiblugit uqariyayut inimut pulaarumayut tuhaapkaktautinnagit, Nunallanit ilauyumayutlu Kitikmeot Inuit Associationkullu tahapkuulu angikhimayut aulapkaikut alallu katimayuni ilauyut tuhaapkaktitaugamik, Iluavaktullu katimaganata havaktiilu pulaakhimayut Tunuhingmi Kugak Havaktaatsitemun. Ilihimayauyuq “Goose” tahaffumunulu “George” inamut Kikturidjiuvikmi 2015mi. Taimaa Katimayiit piyumayugaluat NIRB tuhaapkaktautillugit qanuriliunahaurutimingnik inuit takuyakhaanik inimut pulaarutainnik ilauyukhautauyugaluq kinullingmik tuhaapkaktainni umiktillugu Tunuhingmi Kugak Havaktaat mikhaagut, Taimaa pinahuatugaluatihumagiblugi akunnanni tatqiqhiutitqaffiunaiqtut inimut pulaaktitlugitlu Kinullingmiklu tuhaapkaivlutik. Katimayiit titiqqamik Pulaarutimingnik tuhaapkaikut, aalamiktauk makpiramik tutquqhimayukhamik pivlutik kinullingmik tuhaapkaijjutainnik.

2 Huliyumaplutiqa Inimut Pulaaqtut

Talvani uqariyayut ilaunyi tuhaapkaktitautinnagit katimayuni, ilihimaplugitlu iniit tahapkua Gooselu Georgelu inillaat tingmitkuinnak tikitpaktavut, kinauyaktukyuangmatalu ilauyumayugaluat nunallanit ilaungitut katimayiilu havaktillu pulaaqtillugit ininut. Taimaatta uk ilitturiyauyuk tahapkunanga Kitikmeot Inuit Associationkunnillu nunallaanillu ilaayunin tuhaapkaktitautinnagit katimangmata haffumunal maqpiranitigut takummatait tangmaaqviit imaqangniit kangikhiyayut ikhivayiint tautukpangmatigit inilaani auyautillugu. Taimaatullu ilauyut inuit tuhaapkaktittinnagit katimayuni angikhimayut

¹ NIRB Maligakhautait kinguliriit, Apitilirivikmi 3, 2009 talvani Makpiraanani 17.

² Naunaitkutaa Kihittitaani 12MNO36, NIRB Tuhaapkautinnagit katimayut qanuriliurutikhamingnik pivlugi tamna Tunuhingmi Kugak Havaktaat, Ubluiviani 19mi, 2014mi talvani Makpiraanani 47.

pulaaqhimayut tapkunuunainnaq ikhivayiit katimayiilu, ilanitlu havaktiit tahapkunanilu havaktut Sabinami hivuani kingullingmik tuhaapkaitinnagit auyautillugulu ilituriyamingnik ikayutaukpiaktuq kanikhitjutainnik, Aallat takuyumauugaluil ilaungittilugit.

Tamaita katimayaqatigiit hivuniriyaa tahamna ititurnahuahugu, kanikhinahuahugulu ini tahamna Tunuhingmi Kugak Havaktaat. Qanuqlu nunata takummata, nanilu iluangmanaat (ini havaktauhimayug) Tahapkuat hivuniringmagit havaktauyut. Katimayunut aallatqinut ihumagitquyait NIRBkut pulaaqqattautait inilaanut katittiganamik ilituriyamingnik qanurinmanaat havaamingnut tamaat atuyuittuk, Taimaatuinnaq havangitnamik. Katimayiillu uqariyakhaungitunik uqayuitut takuffaarutainnikutlu havangnahuagtainniklu aulapknahuarutaigut talvani tulaangnikkut.

Itqaumaplugu tahamna, Katimayiit, havaktiillu ilauyullu Sabinatkunnit ihuahaihimayut pulaarumaplugu ini tahamna katimatillugit Katimaqatigiita katimanahauktulugit talvani Iqaluktuutiama, Kikturidjiuvingmi 12min 17mun, 2015mi.

3 Inimun Pulaangnahuat Hannaiyuatait

Kikturidjiuvium tatiqhiutani 14, 2015mi John Kaiyoganalu Sabinamitlu havaktuq takupkaktittiyut nunuayanik palaaqtakhamut inimik, tahapkununalu Qaritauyakkut tautuktittugit, Immaktilikvianilu 2015mi hannaihimayait takuyakhat Tunuhingmi Kugak Havaktaat mikhaanut, hannaiyarumaplugit Katimaqatigiit inimit pulaaktinnagit. Tahamna takupkaktituayuk hapkunina iluahimayug:

1. Tunuhingmi Kugak Havaktaat Ilturipkauhia titirqittimayug ([Naunaitkutaani A](#))
2. Nunaanni Takupkaktayuk Qaritauyakkut ublumimut, Immaktilirviani 2015mi ([Naunaitkutaani B](#))
3. Nunauyaq – George inaani takummataa ([Naunaitkutaani C](#))
4. Nunauyaq – Goose innani takummataa ([Naunaitkutaani D](#))
5. Nunauyaq – Tagiungmiutat Nalaviani inaata takummahia ([Naunaitkutaani E](#))
6. Nunauyaq – Ukiumi hikumi apqut aulavia ([Naunaitkutaani F](#))

4 Upautihimayut

4.1 Sabinamit Iluayut

Bruce McLeod, Atania, Hivuliktialu Havaktinit
Matthew Pickard, Ikhivautliup tuklia, Hilaqyuaqtuliqiyiitlu, Ikuppivvilirijikkut
Wes Carson, Ataniata tuklia, Havaaplu Hivumut Havaktia
Jeff Eng, Aulapkaikyuklu, Aulapkaiyudjitigutlu havaktuk
John Laitin, Ataniuyuk, inimi Aulapkaiyunik
Cheryl Wray, Hilakyuamik Munariyuq
Merle Keefe, Hilakuamik Aulapkadjutainik havaktuk
Rick Peter, Ininik Munakhiyuq

4.2 Ikhivayiit Katimayiit Iluayut

Elizabeth Copland, Ikhivautaaqtuq
Guy Alikut, Ikhivayuni Iluayuk

Phillip Kadlun, Ikhivayuni Iluayuk
Glenn McLean, Ikhivayuni Iluayuk
Jaypootie Aliqatuqtuq, Ikhivayuni Iluayik

4.3 Katimayuni Havaktut

Ryan Barry, Atanik Aulapkaiyuq
Tara Arko, Aulapkaiyi, Ayungnaqtunik Havautinik Ihauhaiyi
Kristina Benoit, Ayungnaqtunik Ilihimapkaiyi
Kelli Gillard, Ayungnaqtunik Ilihimapkaiyi
Davin St. Pierre, Ayungnaqtunik Ilihimapkaiyi
Alexandra Hizaka, Ikayuktia Anyungnaqtunik Ilihimapkaiyup
Erika Zell, Ikayuktia Ayungnaqtunik ilihimapkaiyup
Alana Vigna, Hilakyuami Ayungnaqtunik havaktia

4.4 Katimayiit Ahikpani Maligaliutainik Kauyimapkaiyiit

Teresa Meadows, Shore Jardine LLP

5 Inimut Pularutaa

5.1 Naunaitkudjuhikhaa

Sabinatkullu Katimayiillu ihahaihimayut qanuqtut pinaingmanata ini pulaarumikkuinugiangnittumik takuriyumayut Goosemiklu, Georgemiklu tangmaakvinik hellikoptakkut. Mamianaqtuk, Kikturidjuvikmi 16nani inimut pulaarahuaqtiluta, takhilaqingmat helikopta tingmingnittuq inimut. Ininut pulaarutikhata aalangukhimayuq helikoptakkut tautugumalugit tamangnik tangmaakviinnik. Tingmitikkut aulaqtut Goose tangmaavianit George tangmaavianut. Aulatdjuhia ininut pulaangmata takuttaaqtuq qanuqtut pingmanata, imaa ittuq, Katimayiit adjiliuhimayut pulaakhimatitlutik inillaanut, imaa ittuq.

Katimayiillu havaktiillu talimani ikaangniini, taimaaluunnin talimani ikaangniini nappalu ikaangnip aipaani pulaakhimayut Gossemilu Georgemilu tangmaakviini. Ilihimapkangnahuahugit, Titiraqhimayut tuniyauhimayut ilaayunut pulaakhimangmata, iliyauhimayullu Inuit takuyakhainik Katimayiit titirainni.

Iluayut ihumagiplugit tuhaapkaktitaungmata, tahamna aulapkarumayaat kinulingmik tuhaapkaikpata qaritauyakkut tautuktakhainik adjiliuhimayunik inimi pulaahimatitlugit adjiliuhimayunik katimayiit qunniatqittiniaqtut katimaviani katimatillugit kinullingmik tihaapkaitillugit.

**Naunaikpiahimayut Aulduhiit inimut pulaaqtuatkait
Tunuhingmi Kugak Havaktaat: Kikturidjiuvikmi 16, 2015**

Qanaungman (nalautimayut)	Hulilukaarutait
10:00mungangman ublaami	Charterrahuaktaat Iqaluktuuttiamit aullaqtuk
11:00mungangman ublaami	Chartaktik tikittuq Goose tangmaakvianun
11:00 ikaangnianit 11:15 mun ublaami	Aulatjutikkut mittakvianit Goose tangmaakvianut
11:15min ublaanani 11:30 munublaanani	Iluayunik naunaiktiriblutik, nunalu naunaiyakhugu
11:30min ublaami 12:30mun ubluummaat	Goose tangmaakviani pihuuyaqqaaqhutik qitiqqaqman niriyut
1:00min 1:30mun ubluummaat	Havaktatik qanuqtut inmanaat takummataa*
1:30min 2:15mun ubluummaat	Angutitllu, Ukiumilu apqutigiyaa, Hunavalungniklu akyaknikkut*
2:15min 3:15mun ubluummaat	Uyaqqakuit, halumailgiitlu, Imaqulu, tahamnalul algakviup umidjutaa*
3:40min 4:00mun ubluummaat	Chartaktatik George tangmaaqvianut aullaqtuq**
4:00min 4:40mun ubluummaat	Pihuyaqtut George tangmaaqviani
4:40min 5:00mun ubluummaat	Chartaktatik utiktuk Goose tangmaakvianun
5:15mi ubluummaat	Chataktatik aullaqtuqGoose tangmaaqvianin

*ILIHIMAYUKHAT: Tamaita takupkaktitauhimayut (qaritauyakkut) takupkaktitauhimayut katimayunut iliyuahimayut tuhaapkagakhaini NIRBkut titirakhimayaini Inuit takuvagakhait talvanilu linkmik taivaktainni ittuq:

<http://ftp.nirb.ca/02-REVIEWS/ACTIVE%20REVIEWS/12MN036-SABINA-BACK%20RIVER/02-REVIEW/08-TECHNICAL%20MEETING%20&%20PHC/03-BOARD%20SITE%20VISIT%20REPORT/>.

**ILIHIMAYAKHAT: Hilap idjuhia (takyuk) ikitqiyani Inungnik yautuktinninmagit inillanik Goosemilu Georgelu tangmaakviinnik helkoptatkut pinahuaqtagaluamingnik, Katimayit iluayut Inuillu ikittut havaktiit, malgoklu Innuk Sabinamit aullakhimayut George tangmaakvianut tingmitikkut.

5.2 Aulluatait tangmaakvingmut utikhutiklu

NIRBkut katimayit, havaktiilu tingmiyut Iqaluktuuttimin, Nunavutmin Sabinap Goose tangmaakvianun mittakvianun tingmitikkut. Tingmingmata qulauttugu takuyakhaktik Tariungmiutat Nalaviani nuna tautuktaat ([Adjiliuhimayug 1](#)) Aulatillugit Goose tangmaakvianun mittakvianun ([Adjiliuhimayug 2](#)).



Adjiliuhimayug 1: Ikiangmin tuatuktauyuk Tariungmiutat Nalaviani nuna



Adjiliuhimayug 2: Ikiangmin tuatuktauyuk Goose tangmaakvia inani

5.3 Inaata Ilituripkuata Iluayuniklu Ilihimapkangnahuahugit

Minmata Goose tangmaakvingmut mittakvianut, NIRBkut tunnahuktittauyut Sabinatkunnit, aggitjaublutik ataniita havakvianut tangmaakviani ([Adjiliuhimayug 3](#)). Sabinap ilihimapkaktait helikoptakut tingminahuaqtugaluit ilaayut George tangmaakvianun helikoptakkuungnitut, Inuit tamaita aulanahuaqtut tingmitikkut chartakkut. Auladjutikhaa aalangnukmat tamaita ilaunahuat atauttimiinnahuat pulaahimatillugit. Sabinatkut havaktiit niqikhainik hannaihimayut, inmingniklu ilituripkaiklutik. Mr. McLeod ([Adjiliuhimayug 4](#)) tahapkualu takuuktugit:

1. Qaritauyakkut – Ilituripkautaa ([Naunaitkutaani G](#))
2. Qaritauyakkut – Havangnahuaktainnik Ilituripkaidjutaa ([Naunaitkutaani H](#))



Adjiliuhimayug 3: NIRBkut tunnahuktitauyut Sabinatkut havaktiinnit Goose tangmaakviani mitakviani



Adjiliuhimayug 4: Mr. McLeod tuhaapkaiyug NIRBkut ikhivayiit katimaqatigiinnut havaktiinnullu

5.4 Goose Tangmaakviani Pihuyaqtut

Qitiqaruingmata, NIRB ikhivayiit katimayiit, havaktiillu pihuuyaktut Goose tangmaakviani maliqattakhugit Sabinatkut havaktiit. Pihukkamidjuk tangmaakvia nayuqpaktainnik tautuktut ([Adjiliuhimayug 5](#)), Takummataa igluqaqviup (Adjiliuhimayut [6](#), [7](#), [8](#), [9](#), [10](#) tamnalu [11](#)) tahapkuallu havangnahuaqtait nunami ([Adjiliuhimayug 12](#)).



Adjiliuhimayug 5: Goosemi tangmaakviani nayugakhat



Adjiliuhimayug 6: Talvaniginnalimaittuq ikulattivik



Adjiliuhimayug 7: Ikulattiviup akyakuukvia



Adjiliuhimayug 8: Takummata talvaniginnalimaittup iqqakuukvia takuriyakhamingniklu hunavalunik tutquqhimavia



Adjiliuhimayug 9: Iqqakuukviup tutquqhimavia



Adjiliuhimayug 10: Goose tangmaakviata hilahiudjutaa iglukpak



Adjiliuhimayug 11: Pihuktut mikhaanut Goose tangmaakvianun qatakyuit tutquqhimaviit



Adjiliuhimayug 12: Takummataa havakviata inaani Kanuup Iniluanani
algakhimayug tamnalu halumailrunik tutquqhimavia

5.5 Havaktatik qanuqtut inmanaar takummataa

Pihuqqaaqtilutik Goose tangmaaviani, Mr. Pickardlu Mr. Englu Sabinatkullu tautuktittiyut ([Adjiliuhimayug 13](#)) tahapkununa havaknahuatamikkut titiraqhimayuni:

1. Qaritauyakkut – Akyaqtaqtuutigit tahamnaluk Tariungmiutat Nalaviani takummataa ([Naunaitkutaani I](#))
2. Qaritauyakkut – Iqakunikkut tahamnaluk Imaqkut takummataa ([Naunaitkutaani J](#))
3. Qaritauyakkut – Angutitigit tahamnaluk Ukiumi Apkut takummataa ([Naunaitkutaani K](#))
4. Hiqinnuyakkut qunnialihimayug – Bathurst tuktutait auladjutait ([Naunaitkutaani L](#))
5. Hiqinnuyakkut Qunnialihimayug – Beverly tuktutait Auldjuhiit ([Naunaitkutaani M](#))



Adjiliuhimayug 13: Mr. Pickard tuhaapkaiyug NIRBkut Ikhivayiinnut Katimayiinnik Havaktiiniklu

5.6 Georgemi Pihukpaktilugit

Talvani iningmata Goose tangmaakviani, iluayut aggitjauyut tingmitikkut George tangmaakvianun (Adjiliuhimayut [14](#) tahapkuallu [15](#)). Sabinap havaktiit pihuqatigiyaait iluayut tahamani George inaani mittakviani. Talvani mikitqiyak tangmaakvik ittuq qinikhiayuni nappakhimayut inigiblugu (Adjiliuhimayut [16](#), [17](#), [18](#)tahapkuallu [19](#)).



Adjiliuhimayug 14: Ikiangmin takummataa George tangmaakvia inani



Adjiliuhimayug 15: Tingmit atukhimayaat akyaktaqhugit pulaaqtaqtut iluayut



Adjiliuhimayug 16: Katitiqhimayut tautugakhait tahapkuallu Qayaqtuutait atuqpagaait tutquhimaviat



Adjiliuhimayug 17: Tutquqhimaviit tamayaqaqviit Qinikhiayullu havaktiita Ingilrutait



Adjiliuhimayug 18: Talvaniginnalimaittunut tutquqhimaviat iqqakuunut



Adjiliuhimayug 19: Helikoptap mittaqvia

5.7 Iluayut Apiqqutait

Hapkuat appikhutauvaktut ilauyunit ininut pulaangmata:

- Qaffit algakviit init itpat havaktaini tahamani qiniqhiavianni? Iniqangnini iluviqangniqqaa?
- Initurliqangniqqaa talvani Tariungmiutat Nalaviani nunani?
- Hunattauq progressive reclamation?
- Ikulattituariyakhi taamna?
- Ahiruqtuqaqpakpa piqtumit nayugainnik, ilaali ukiumi?
- Anguniaqtut takunnaqpakpattahapkunani Inillani?
- Microwave towerqaqpangniaqa tahamani?
- Qanuqtut qaritauyaqaqpakpat atuqtamingnik ahinut uqaraanamik? Towerqaqpakpat nakit hamuna tikittaaqtunik?
- Qanurittut angutitt tautuktauvakpat adjiliurutinut?
- Qanuqtut katitirivakpihi Inuit Qauyimayainnik?
- Hamna iliturriyaunahugitpakpa Iqaluit nayungmanaadjuk?
- Ukhuryuat hamungautauvakpat inimut ualliniptingnit?
- Tuktut hiqinnuyaagitut pihimayut auladjutait takupkauvakpa atuqtauvakpalu?
- Tahamna adjiliuhimayuq qunniaq Inungnut takupkautauvakpaa?
- Ilihimalikamingnik tahapkununa imangmiutigut pivaktut auladjutait pittaaqqat taffumuna hydrographical iliturrinahuridjutaitigutluuniit, iningnihaatigutluuniit, ingilraangnitunnitluuniit katitiqpakhimayainnik?
- Tahamna pivugu Nalaviani inia, Qanuqtut aktigiyunik qanugittuniklu umianik atuqpangniaqqat?
- Tahamna pivlugu akqut talvuna ittuq nalaviani innanut, algaktutigut ilitturiyaunahuaqpakpat?
- Umiat uqumaittunik uhiqangniaqqat qayangnaidjutikhamingnik?
- Umiakktut kivataanungauyut Tunani Kivataani aulavia atungniataat?
- Tahapkuat havaktut ukiiniaqat hamani (2015-2016)?
- Qanuqtut pivangnahuaqtut iqqagunut munarittiangnahauqlugit?
- Hunaugaluaqtauq iglukpannuq/utuqqaq iglukpak ualiniani Bathurst tahiani?
- Qanuqtut uunnaktirilikpakpa hamani?
- Qaffinik ukhukyaunik tutquqhimayuqaqtut hamani?
- Nani qattaqyukyuat ilinahuaqtut?
- Qanuqtut anitigiyut tariumi uhidjutait tutquqhimaviit qataqyuit?
- Kia aullatihimayaa tahamna Inuit Qaujimaningit katimaqatigiiktuni? Kia aullaqiyaa ilitturinahaudjutaa?
- Qanurittut angutit naunaikhimayut-tiguyauffaakpaktait DNAnik ilitturinahuahutik?
- Ilitturinahuaqpakpigit Iqaluit nunami talvani?
- Kina tingmivakpa huli naunaiyakhipluni?
- Umiqaqangniaqqa Hay Rivermit?
- Tatqiqhiutimi kitumi umiaqaqluaqpakpa?
- Naunaiyattiaguk tahamna ballast water management?
- Qanuqtut ihuaqtumik Qinauk nunauyaliuhimava?
- Algakhimayut Inuit nunaluananiluunnit quigaluupluunniit nunanani itpat?
- Qanuq akitutigiva ikutaraanata?
- Hivuniptingni landfarmmik pinahuaqqaat?
- Uqaqatigiikpauhiit qanuq itpat tahapkununa Kitikmeot Inuit Associationkullu?
- Tuhangnaqpakpat aullahiniangmanata Qinaup tulaktalvikhanutlu apqutikhanullu?

6 Hulilukaarutikhait takuukaaqhugu tahaffuma ininut Pulaaqaaqhutik

Qanuqtut piniangmanata uqaqhimaittugaluat pulaaramik inillanut, Kinullingmiklu tuhaapkaktitaitinnagit havagahuaqtamingnik, ublukhaanik naunaingniaqtuk iniktigitikhaanik ayuhautainnik tuhaapkaigumik, taima katimayiillu aullapkaiyullu ilauyullu nunallanitlu takuyaktuqhimayut aalallu Inuit naunaiyaqniaqtut ihumagiyamingnik tahaffumuna mikhaagut ini pulaaqtainnit, aalaniklu ilitturiyamingnik iluarumagumikku titirarumagumikkuluunniit, apikhutiqarumikluunniit ilattaaqtaat tuhaqtaugumik titiragakhainnik.

**Naunaitkutaani A: Tunuhingmi Kugak Havaktaat Ilituripkauhia
titirqittimayuq**



July 2, 2015

Attendees:

Elizabeth Copland, Chairperson
Guy Alikut, Board Member
Phillip Kadlun, Board Member
Jaypootie Aliqatuqtuq, Board Member
Glenn McLean, Board Member
Henry Ohokannoak, Board Member
Joe Ohokannoak, Board Member
Teresa Meadows, Legal Counsel
Ryan Barry, Executive Director
Tara Arko, Director Technical Services
Kristina Benoit, Technical Advisor
Alexandra Hizaka, Assistant Technical Advisor
Kelli Gillard, Technical Advisor
Davin St. Pierre, Technical Advisor

Re: Sabina Gold and Silver – Back River Project

I would like to take this opportunity to thank you for participating in the Back River Project Tour. The Back River Project is a proposed gold mine in the western Kitikmeot Region of Nunavut, 100% owned by Sabina Gold & Silver Corp. It was acquired by Sabina in 2009 although exploration has been ongoing since 1982 via a number of different owners. The closest communities to the Project are Kingoak, located approximately 250 km to the northeast of the Goose Property, and Omingmaktok that is located approximately 250 km to the northeast of the Goose Property. The communities of Kugluktuk and Cambridge Bay are the closest major regional settlements.

The Project is currently accessed and supplied by air, using a combination of seasonal ice and all-weather airstrips at the Goose Property. During the construction phases and throughout the life of the mine, most equipment, supplies, and fuel will be transported to a Marine Laydown Area (MLA) by ocean-going vessels during the summer open-water season. The MLA will be located on the southern portion of Bathurst Inlet.

On May 20th, 2015, the Company announced the positive results of a Feasibility Study (FS) for the Back River gold project. The FS is based on the development of two sites: Goose and George. Each site has four minable deposits with the majority of the resources and reserves located at Goose site. However, we have opted to focus our efforts on the Goose Property which contains the majority of the resource. Thus Sabina will not advance



development of the George Property within the current environmental assessment and permitting process. The Project represents significant socioeconomic benefits. Some highlights include:

- Generate a post-tax internal rate of return of 21.7% and net present value of \$539 million;
- Generate Life Of Mine post-tax net cash flow of \$914 million on gross revenues of \$4.5 billion with a post-tax payback period of 2.2 years (from start of operations);
- Generate average production of 413,000 oz Au in years 1 through 4.

Due to the remoteness of the Property, infrastructure is required for freight, power generation, and manpower accommodation. Both the MLA and Goose sites will have bulk fuel storage tanks, laydown yards, diesel power plants, maintenance shops, accommodation camps, water and domestic waste management facilities, and satellite communications. All-weather airstrips will be located only at the Goose site. As well, all-weather roads will be limited to an area within each site. These two project sites will only be connected by winter ice roads.

The major infrastructure related to the mining and processing operations at the Goose Site includes the process plant, tailings storage facilities, waste rock storage areas, water management drainage and storage ponds, and haul roads and equipment to service the underground mines. The MLA will support the seasonal trans-shipment and staging of construction and operational freight. Diesel will be received and stored in four 15 ML tanks at the MLA; this will provide sufficient capacity for peak operating needs of power generation and mobile equipment for one year.

Sabina officially began an Environmental Assessment (EA) in June 2012, with the submission of a Project Description and various applications to the Nunavut Impact Review Board (NIRB). In January 2014, a Draft Environmental Impact Statement (DEIS) was submitted by the Company followed by the Technical Meeting, Community Roundtable and Pre-hearing Conference in November 2014. Sabina is expecting to submit a Final Environmental Impact Statement (FEIS) in the second half of 2015. Following issuance of a Project Certificate, a water license and other permits will also be required. Engagement with communities, the Kitikmeot Inuit Association (KIA), and government/regulatory agencies will continue to occur throughout these processes.

Below you will find the schedule proposed for the Back River Project tour. There will be four presentations: (1) Site Induction (2) Project Overview (3) Waste Rock, Tailings, ARD/ML, Water & Waste Management, Mine Closure (4) Wildlife, Winter Roads & Shipping. These presentations will discuss potential effects, major alternatives reviewed, how key areas of concern have been addressed, and how numerous mitigation and management commitments have been made and incorporated. There will also be guided helicopter tours of the deposits, infrastructure, tailings storage facilities, waste rock storage areas, and water management facilities discussed above. Lunch, snacks, and transportation around the existing site will all be provided.

We will be dividing the participants into three groups to allow for enhanced discussion and also to ensure everyone can participate in the helicopter tour of the Goose Property. We will advise on which group you are in upon arrival at the site.



Proposed Schedule – NIRB Back River Project Site Visit

	Group 1 (5 Participants)	Group 2 (5 Participants)	Group 3 (5 Participants)
10:30 am	NIRB Fixed Wing #1 Arrives at Goose	NIRB Fixed Wing #1 Arrives at Goose	NIRB Fixed Wing #1 Arrives at Goose
10:30 am to 10:45 am	Transport from Airstrip to Goose Camp	Transport from Airstrip to Goose Camp	Transport from Airstrip to Goose Camp
10:45 am to 11:00 am	Introductions & Site Orientation (LCR) BM	Introductions & Site Orientation (LCR) BM	Introductions & Site Orientation (LCR) BM
11:00 am	NIRB Fixed Wing #1 Departs Goose	NIRB Fixed Wing #1 Departs Goose	NIRB Fixed Wing #1 Departs Goose
11:00 am to 11:30 am	Project Overview (LCR) BM	Project Overview (LCR) BM	Project Overview (LCR) BM
11:30 am to 12:30 pm	Goose Walk Around CW & Lunch (LCR) BM	Wildlife, Winter Roads, Shipping (UCR) MTP	Lunch (LCR) BM & Goose Walk Around CW
12:30 pm to 1:30 pm	Wildlife, Winter Roads, Shipping (UCR) MTP	Lunch (LCR) BM & Goose Walk Around CW	Goose Tour via Helicopter WC
1:30 pm to 2:30 pm	Waste Rock, Tailings, Water & Mine Closure (LCR) JE	Goose Tour via Helicopter WC	Wildlife, Winter Roads, Shipping (UCR) MTP
2:30 pm	NIRB Fixed Wing #2 Arrives at Goose	NIRB Fixed Wing #2 Arrives at Goose	NIRB Fixed Wing #2 Arrives at Goose
2:30 pm to 3:30 pm	Goose Tour via Helicopter, Travel to George via Helicopter MTP	Waste Rock, Tailings, Water & Mine Closure (LCR) JE/WC	Waste Rock, Tailings, Water & Mine Closure (LCR) JE/WC
3:30 pm to 3:45 pm	George Tour via Helicopter MTP	Travel to George via NIRB Fixed Wing #2 WC/CW	Travel to George via NIRB Fixed Wing #2 WC/CW
3:45 pm to 4:20 pm	George Walk Around MTP/WC/CW	George Walk Around MTP/WC/CW	George Walk Around MTP/WC/CW
4:20 pm	NIRB Fixed Wing #2 Departs at George	NIRB Fixed Wing #2 Departs at George	NIRB Fixed Wing #2 Departs at George
4:45 pm	NIRB Fixed Wing #2 Departs at Goose	NIRB Fixed Wing #2 Departs at Goose	NIRB Fixed Wing #2 Departs at Goose
5:00 pm	NIRB Fixed Wing #1 Arrives at Goose	NIRB Fixed Wing #1 Arrives at Goose	NIRB Fixed Wing #1 Arrives at Goose
5:15 pm	NIRB Fixed Wing #1 Departs Goose	NIRB Fixed Wing #1 Departs Goose	NIRB Fixed Wing #1 Departs Goose
5:30 pm	Sabina Fixed Wing Departs Goose	Sabina Fixed Wing Departs Goose	Sabina Fixed Wing Departs Goose

BM – Bruce McLeod, President & CEO

MTP – Matthew Pickard, VP Environment & Sustainability

WC – Wes Carson, VP Project Development

JE – Jeff Eng, Director, Engineering

CW – Cheryl Wray, Environmental Superintendent

LCR – Lower Conference Room

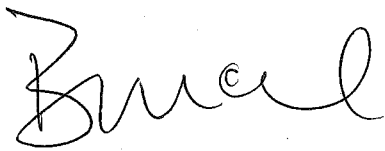
UCR – Upper Conference Room

I would remind all participants to bring appropriate clothing for the weather as well as important medicine. John Kaiyogana, our Community Liaison Officer based in Cambridge Bay, will also be available to answer questions you may have prior to departure.

Also included in this package is a copy of our more recent community tour presentation, and figures representing the planned layout for the Goose Property, Marine Laydown Area, and the associated winter road network.

Thank you so much for your interest in the Back River Project and we look forward to meeting with you at site.

Sincerely



Bruce McLeod
President & CEO
Sabina Gold & Silver Corp.



Matthew Pickard
Vice President, Environment & Sustainability
Sabina Gold & Silver Corp.



**Naunaitkutaani B: Nunaanni Takupkaktauyuk Qaritauyakkut
ublumimut, Immaktilirviani 2015mi**



Back River (Hannigayok) Gold Project Community Update

June 2015

Forward Looking Information

Statements relating to our belief as to the timing of completion of the feasibility study, the EIS and the environmental assessment, the timing of receipt of a project certificate and permits and the timing of the start of construction and the first gold pour, and the results of the feasibility study, the potential tonnage and grades and contents of deposits and the potential production from and viability of Sabina's properties are forward looking information within the meaning of securities legislation of certain Provinces in Canada. Forward looking information are statements that are not historical facts and are generally, but not always identified by the words "expects," "plans," "anticipates," "believes," "intends," "estimates," "projects," "potential," "opportunities," and similar expressions, or that events or conditions "will," "would," "may," "could," or should occur. The forward looking information is made of the date of this presentation. This forward looking information is subject to a variety of risks and uncertainties which could cause actual events or results to differ materially from those reflected in the forward looking information, including, without limitation: the effects of general economic conditions; changing foreign exchange rates; risks associated with exploration and project development; the calculation of mineral resources and reserves; risks related to fluctuations in metal prices; uncertainties related to raising sufficient financing to fund the planned work in a timely manner and on acceptable terms; changes in planned work arising from weather, logistical, technical or other factors; the possibility that results of work will not fulfill expectations and realize the perceived potential of the Company's properties; risk of accidents, equipment breakdowns and labour disputes; access to project funding or other unanticipated difficulties or interruptions; the possibility of cost overruns or unanticipated expenses in the work program; title matters; government regulation; obtaining and receiving necessary licences and permits; the risk of environmental contamination or damage resulting from Sabina's operations and other risks and uncertainties including those described in Sabina's annual information form for the year ended December 31, 2014 available at www.sedar.com

Forward looking information is based on the beliefs, estimates and opinions of Sabina's management on the date the statements are made. Sabina undertakes no obligation to update the forward looking information should management's beliefs, estimates or opinions, or other factors, change, except as required by applicable law



Who is Sabina Gold & Silver Corp?

- Sabina is a Vancouver, Canada based precious metals company on track to become a mid-tier gold producer
- Listed on the Toronto Stock Exchange (TSX: SBB)
- Skilled staff with extensive northern experience
- The Company is committed to sustainable northern development and acknowledges the need for effective community engagement
- Projects in Nunavut
 - Back River Gold Project, Nunavut
 - Wishbone Greenstone Belt, Nunavut
 - A significant silver royalty on the Hackett River Project, Nunavut



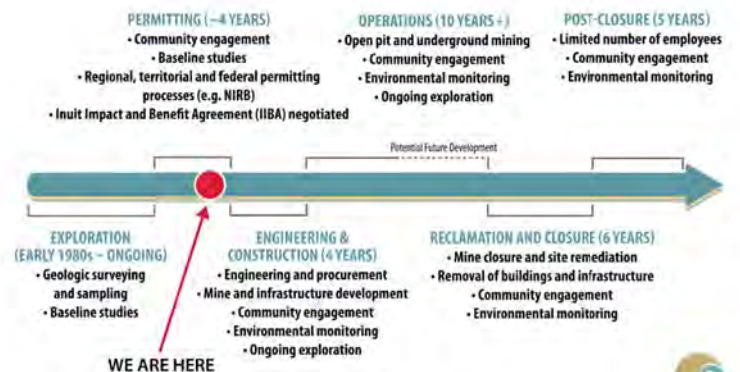
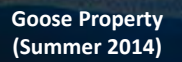
Back River Project

- A proposed gold mine in the western Kitikmeot Region of Nunavut, 100% owned by Sabina Gold & Silver Corp.
- Exploration commenced in 1982. Project has had a number of different owners since. Sabina acquired the Project in 2009.
- Mineral resources of 5.3 M oz. gold (measured and indicated) and 1.9 M oz. gold (inferred)
- Small 2015 field program:
 - Environmental baseline data collection
 - Geotechnical and geophysical studies
 - Resource expansion drilling
- Feasibility Study press release issued in May 2015
- Continuation of the environmental assessment and permitting processes



Goose Property (Summer 2014)





Back River - Feasibility Study May 2015 Results

Summary Results @US \$1,200.00/oz. Gold / 0.87 Exchange		
Pre-Tax NPV(5%) & IRR	\$M / %	\$826 / 26.4%
After-Tax NPV(5%) & IRR	\$M / %	\$539 / 21.7%
Payback	Years	2.2
Mill Throughput	tpd	6,000
Avg. Grade Processed	diluted g/t Au	5.70g/t
Gold Recovery	%	93.3%
Mine Life	Years	10
Avg. Production (Y1-4)	oz./year	413,000
Avg. LOM Production	oz./year	350,000
On-Site Op. Costs	\$/t milled	\$96.28
Total Cash Cost	\$/US/oz.	\$535
All-In Sustaining Cost	\$/US/oz.	\$671
LOM All-In Cash Cost*	\$/US/oz.	\$850
Pre-Production Capital	\$M	\$695
Sustaining Capital (incl. closure)	\$M	\$529



QA/QP ALL C\$ unless otherwise specified.

*LOM All-In Case Cost includes initial and sustaining capital

Key Changes Between the DEIS and FEIS

	Draft EIS	Final EIS
Properties	Goose, George, MLA	Goose and MLA
Extraction of Deposits at Goose	O/P: Umwelt, Llama, Goose Main; U/G: Umwelt	O/P: Umwelt, Llama, Goose Main, Echo; U/G: Umwelt, Llama, Goose Main, Echo
Water Management	Zero-discharge facility	Water treatment
Tailings Storage	One containment area for tailings	Tailings Storage Facility (TSF) plus two mined out open pits (Tailings Facilities or TFs)
Tailings Storage Facility	Located centrally in PDA and on IOL	Located south of Goose Main and off IOL
Processing Rate	5,000 tpd	6,000 tpd



What are we proposing to build?

- Open pit and underground mining operations
 - 4 mining areas (Umwelt, Llama, Goose Main, Echo)
 - 10 years + of production
 - ~350,000 ounces of gold annually
 - Supplied via some combination of seasonal shipping, year-round aircraft, and winter roads
 - Remote, fly in/fly out mine site
 - Gold produced at the mine will be shipped by air as doré bars
- Accommodations (not all occupied at the same time):
 - Goose: up to 465 person camp
 - Marine Laydown Area: up to 75 person camp
- Processing plant at Goose Property (up to 6,000 tonnes/day)
 - Crushing and grinding, gravity separation, cyanide leaching, carbon recovery
- Tailings storage at Goose Property
- Waste rock storage areas



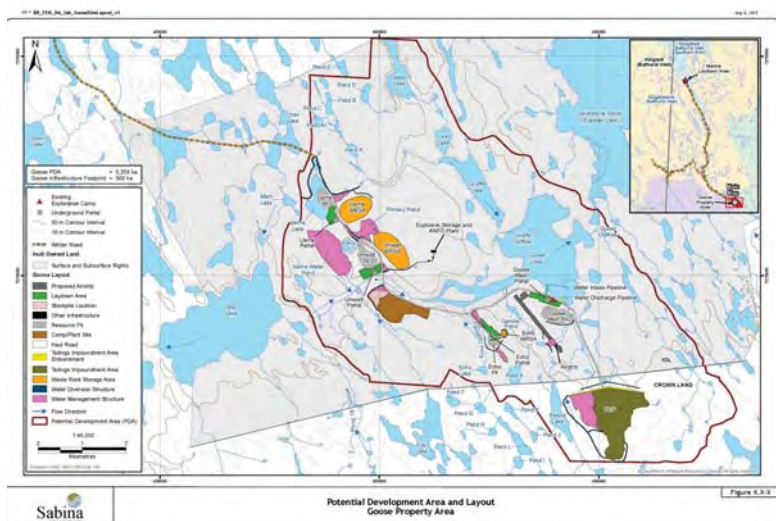
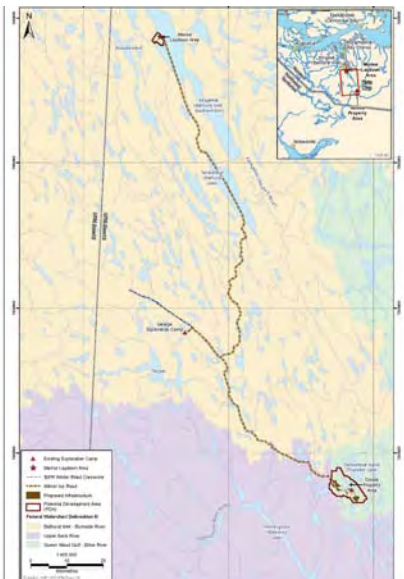
What are we proposing to build? (Continued)

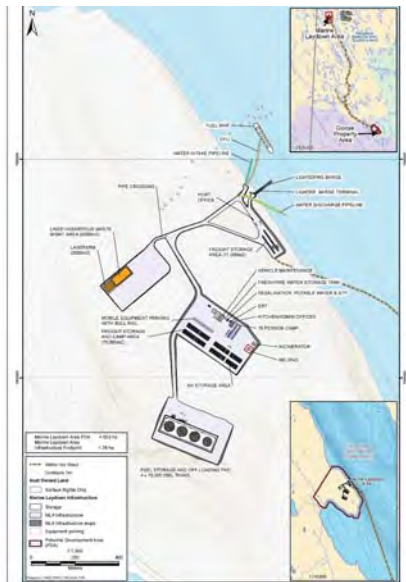
- Marine Laydown Area (MLA) at Bathurst Inlet
 - Open water shipping only
 - Ocean-going barges (DWT: 16,000 tonne; draft 5.9 m) and ships (DWT: 17,000 tonne; draft 9.7 m)
 - Approximately 3-5 ships/year during construction
 - Approximately 4-5 ships/year during operations
- Short all-weather roads within each property
- Seasonal winter roads to connect the properties
 - Approximately 800-1200 truck loads/year during construction
 - Approximately 1600-2100 truck loads/year during operations



What are we proposing to build? (Continued)

- All-weather airstrip at Goose, seasonal airstrip at the MLA
 - Approximately 2-4 flights/week at the MLA (only when the MLA is operational)
 - Approximately 2-4 flights/week at Goose
- Other buildings (e.g. administrative complex, maintenance facilities, warehousing)
- Fuel and bulk storage areas
- Water and waste management facilities
- Power generation facilities
- Explosives storage





Construction Activities

- Construction is expected to begin in 2016, operations are expected to begin in 2020 (pending Project approval)
- Construction will occur over a 4 year period and involve a number of activities

Year	Key Construction Activities
2016 (Year -4)	MLA initial sea lift
2017 (Year -3)	Project certificate issued; initial sealift; mobilization; long lead item procurement; expand airstrip and construct first fuel tank at Goose; construct port facilities at MLA; initial winter ice road from MLA to Goose
2018 (Year -2)	Type A water licence issued; construct port facilities at MLA; initial winter ice road from MLA to Goose; install construction camp at Goose; commence open pit mining and TSF construction at Goose; construct site infrastructure at Goose
2019 (Year -1)	Construct site infrastructure at Goose; commission process plant at Goose

Major Alternatives that were Considered

- Project Go/No-Go decision
- Access and transportation alternatives for year round access
- Selection of the deposits included in the Project development
- Plant processing throughput
- Selection of the unit process operations for extracting gold
- Tailings and waste rock management
- Water management
- Location of the major Tailing Storage Facility infrastructure
- Power generation
- Remote integrated operations
- Site reclamation and closure alternatives



Opportunities from the Back River Project

- Hiring preference for those located in nearby Kitikmeot communities
- Training programs for northern hires to be established
- Contracting and business development opportunities will be made available
- Contracting preference for Kitikmeot and Nunavut companies
- Taxes, royalties, Inuit Impact and Benefit Agreement (IIBA)



Existing Inuit Employment at the Back River Project

2013 Employment:

- 58 Inuit employees (30% of approx. 200 total employees)
- \$1,654,590.00 gross payroll value

2014 Employment:

- 15 Inuit employees (50% of approx. 30 total employees)
- \$339,201.00 gross payroll value



Construction & Operations Employment

	Employment Estimates
Construction	<ul style="list-style-type: none"> • Average employment of approximately 650 • Maximum employment (during busy periods) of approximately 1,000
Operations	<ul style="list-style-type: none"> • Average employment of approximately 800 • Maximum employment (during busy periods) of approximately 1,150

Positions will be needed in:

- Open pit mining
- Underground mining
- Site services
- Freight
- Construction
- General & administrative
- Shared services
- Processing
- Ore hauling and heavy equipment operation



Working with Local Communities

- Community newsletters and informational materials (e.g. fact sheets, posters, maps)
- Social media (e.g. website, Twitter)
- Donations
- Public meetings
- Community Liaison Officer and office in Cambridge Bay
- Community advisory groups
- Meetings with key stakeholder groups (e.g. HTOs, Hamlets, youth)
- Radio shows and information booths
- TK studies
- Bernard Harbour restoration project



Meetings and Major Correspondence with Community and Stakeholder Groups on the Back River Project as of June 1, 2015

	Number of Meetings	Number of Major Correspondences	TOTAL
Cambridge Bay	46	7	53
Kugluktuk	37	7	44
Bathurst Inlet & Bay Chimo	8	5	13
Gjoa Haven	15	2	17
Taloyoak	15	2	17
Kugaaruk	13	2	15
Other (e.g. northern trade shows & conferences, SEMCs, newsletters)	25	10	35
Yellowknife / Other Locations in the NWT	10	16	26
TOTAL	169	51	220

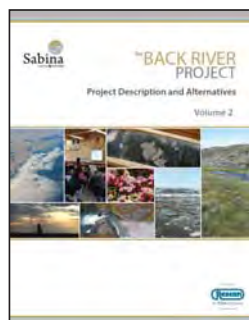
Environmental Assessment

- A process used to evaluate the potential environmental and socio-economic effects of a proposed project
- Overseen by the Nunavut Impact Review Board (NIRB)
- Sabina's EA officially began in June 2012
- Regulators, governments, Aboriginal organizations, and communities are involved in EA through reviewing Sabina's submissions, participating in commenting periods, hearings, etc.
- DEIS hearings in Cambridge Bay in November 2014
- FEIS submission expected in second half of 2015, hearings and review to follow
- NIRB will recommend to the Minister of Aboriginal Affairs and Northern Development Canada whether the Project should proceed and under which conditions.



Environmental Assessment

- Sabina's FEIS will describe the Project, the various studies that have been conducted (scientific and TK), potential Project effects, and proposed mitigation in detail.
- An EA cannot study everything. Instead, we study only the most important environmental and socio-economic features (VECs and VSECs).
- Comments made on the DEIS are helping Sabina produce a Final EIS. There are still many opportunities for public participation available.



Valued Ecosystem Components (VECs)



Atmospheric

- Air quality
- Noise and vibration

Terrestrial

- Special landscape features
- Vegetation
- Caribou
- Muskox
- Wolverines and furbearers
- Grizzly bears
- Raptors
- Migratory birds

Freshwater

- Water quality
- Water quantity
- Sediment quality
- Fish habitat
- Arctic grayling
- Lake trout

Marine

- Water quality
- Sediment quality
- Fish habitat
- Arctic char
- Marine seabirds
- Ringed seal



Valued Socio-Economic Components (VSECs)



Human Environment

- Archeology
- Employment
- Education and training
- Health and community well being
- Economic development
- Business opportunities
- Subsistence economy and land use
- Non-traditional land & resource use
- Country foods and human health



NIRB Technical Meeting and Pre-Hearing Conference

- Held in Cambridge Bay in November 2014
- Purpose of the meetings was to review Sabina's DEIS
- Representatives from Sabina, Kitikmeot communities, KIA, Government of Nunavut, Government of Canada, Government of NWT, and NWT Aboriginal organizations attended
- Productive discussions were held and a number of suggestions were made for Sabina to include in their FEIS
- Key areas of concern for local communities were identified in NIRB's PHC report



Area of Concern - Caribou

- Area of concern:
 - Potential for direct, indirect, and cumulative effects to caribou and important caribou habitat
- How Sabina has addressed the concern:
 - 20 aerial surveys, habitat mapping, resource selection function, 60 remote cameras, traditional knowledge
 - Avoidance of high-value caribou habitat (from TK and baseline)
 - Helicopter management
 - Use of winter roads only to connect Project areas
 - Road management: speed limits, wildlife right of way, timing
 - Work suspension protocols for when large herds of caribou present
 - Ongoing monitoring



Caribou Migration Video



Area of Concern - Tailings

- Area of concern:
 - The location and method of containment of mine tailings
- How Sabina has addressed the concern:
 - Detailed engineering studies
 - Relocation of Tailings Storage Facility (TSF) off of Inuit Owned Land and on to Crown Land, due to Inuit requests
 - Additional use of mined-out open pits (i.e. Umwelt and Goose Main) as safe storage options for tailings
 - Frozen foundation rockfill dam with a geosynthetic liner for TSF
 - Progressive reclamation (e.g. use of waste rock on top of TSF, 5m closure cover)
 - Water treatment and monitoring



Area of Concern – Waste and Water Management

- Area of concern:
 - Protection of local water systems and wildlife from exposure to wastes and other contaminants
- How Sabina has addressed the concern:
 - 4 freshwater water quality baseline studies and freshwater water quality effects assessment
 - Water Monitoring and Management Plan; Aquatic Effects Monitoring Plan; Mine Waste Rock and Tailings Management Plan; Risk Management and Emergency Response Plan; Land, Water and Ice Based Spill Contingency Plan; Landfill and Waste Management Plan; Hazardous Materials Management Plan; and other plans.
 - Federal and territorial regulations



Area of Concern – Shipping and the Marine Environment

- Area of concern:
 - Potential for impacts to the marine environment, including impacts within Bathurst Inlet, as well as upon marine mammals, birds and fish from shipping, including potential fuel spill and emergency response roles, responsibilities, and capabilities
- How Sabina has addressed the concern:
 - Marine baseline studies and effects assessments, spill modelling
 - Shipping activities are highly regulated within Canada (e.g. with regards to shipboard operation and navigation, transport of fuel and other hazardous materials, spill response). Sabina will follow all Canadian laws.
 - Various spill contingency plans have been developed (e.g. OPEP, SOPEP)
 - Shipping will occur only in open water and all ships will be Canadian vessels
 - Shipping schedules will be communicated to local communities



Area of Concern – Support for Communities and Youth

- Area of concern:
 - Support for communities, education and training for youth
- How Sabina has addressed the concern:
 - Comprehensive community engagement program and database, economic impact modelling, socio-economic baseline study
 - Commitment to preferential Inuit hiring and employment, annual post-secondary scholarship
 - IIBA to be negotiated
 - Donations policy focused on 'youth and education' and 'community wellness and traditional lifestyles'
 - Community Involvement Plan, Human Resources Plan, Employee and Family Assistance Program, training programs to be developed, continued support of KIA training initiatives



Area of Concern – Wildlife

- Area of concern:
 - Impacts to wildlife and wildlife harvesting from Project activities, including caribou, grizzly bears, fish, birds, and other animals
- How Sabina has addressed the concern:
 - Baseline studies and effects assessments for a number of VECs
 - Mapping workshops with land users, interviews, TK, public consultation, other data
 - Extensive mitigation and management measures to protect wildlife, air, water, vegetation, and soil quality
 - Providing land user access to camps; no employee hunting



Area of Concern – Transportation

- Area of concern:
 - Navigability of Bathurst Inlet, placement of dock infrastructure and the alignment of winter roads for the Project
- How Sabina has addressed the concern:
 - Bathymetric studies
 - Detailed engineering studies, marine effects assessments
 - Re-routing of winter road as a result of Inuit concerns



Marine Laydown Area
(Summer 2014)



Final Environmental Impact Statement (FEIS)

- The FEIS will be the final comprehensive report.
- The DEIS was approximately 5,000 pages long (10,300 pages when all digital files were included)
- The Project is expected to have no significant negative effects
- The Project is expected to have various significant positive socio-economic effects
- Numerous mitigation and management commitments have been made

FEIS Volumes	
Volume 1	Main Volume
Volume 2	Project Description & Alternatives
Volume 3	Public Consultation, Government Engagement & Traditional Knowledge
Volume 4	Atmospheric Environment
Volume 5	Terrestrial Environment
Volume 6	Freshwater Environment
Volume 7	Marine Environment
Volume 8	Human Environment
Volume 9	Assessment Methodology
Volume 10	Management Plans
Volume 11	Other Approvals



Next Steps

- Continued engagement with communities, the Kitikmeot Inuit Association (KIA), and government/regulatory agencies
- Completion of 2015 field program
- Issuance of the FEIS (second half of 2015)
- FEIS hearings (early 2016, likely)
- Following issuance of a Project Certificate, a water licence and other permits will also be required
- Project financing and construction (pending Project approval)



Contact Information

John Kaiyogana

Community Liaison Officer
10 Omilik Road
Box 2239
Cambridge Bay, NU X0B 0C0
Phone: (867) 983-3033
Cell: (867) 446-2501
Fax: (867) 983-3133
jkaiyogana@sabinagoldsilver.com

Jason Prno

Community Relations Advisor
(519) 983-8483
jprno@sabinagoldsilver.com

Matthew Pickard

Vice President, Environment & Sustainability
Phone (Toronto): (604) 484-8967 / (416) 848-1184
Phone (Vancouver): (604) 998-4190 / (888) 648-4218
Cell: (416) 605-7881
mpickard@sabinagoldsilver.com



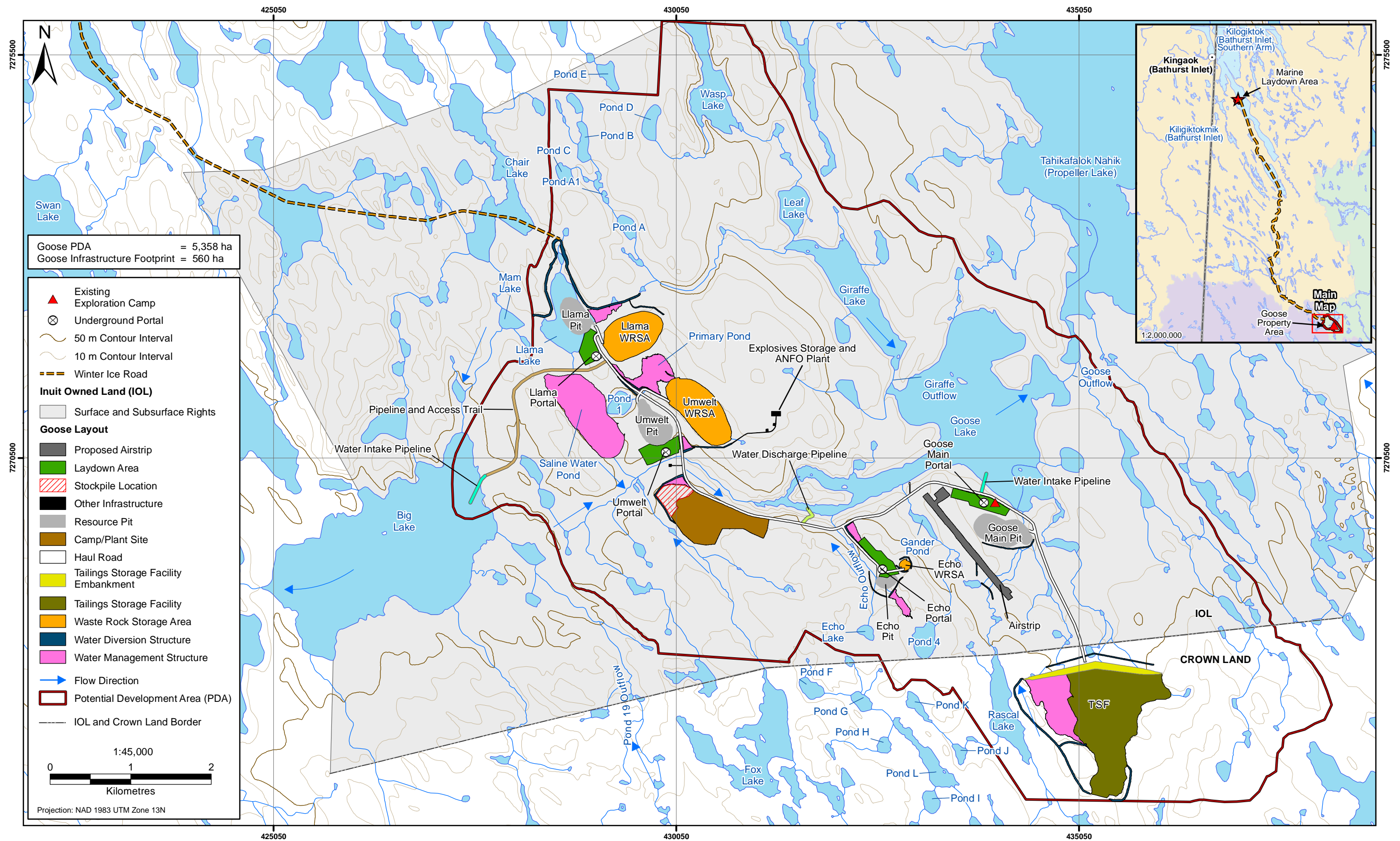
www.backriverproject.com

Sabina Gold & Silver Corp.

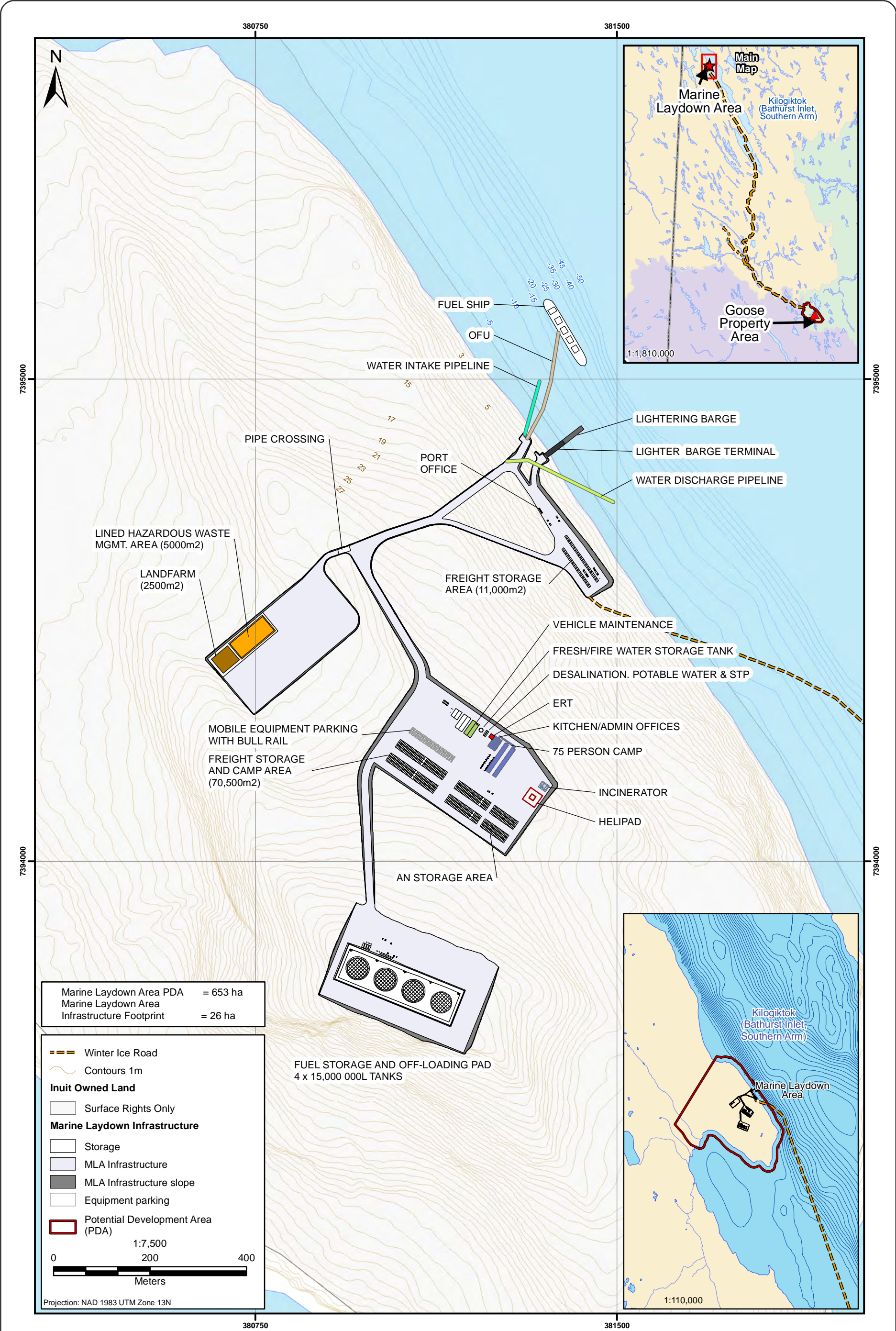
#202 - 930 West 1st Street, North Vancouver, BC V7P 3N4 T: 604.998.4175 | 888.648.4218 F: 604.998.1051

Naunaitkutaani C: Nunauyaq – George inaani takummataa

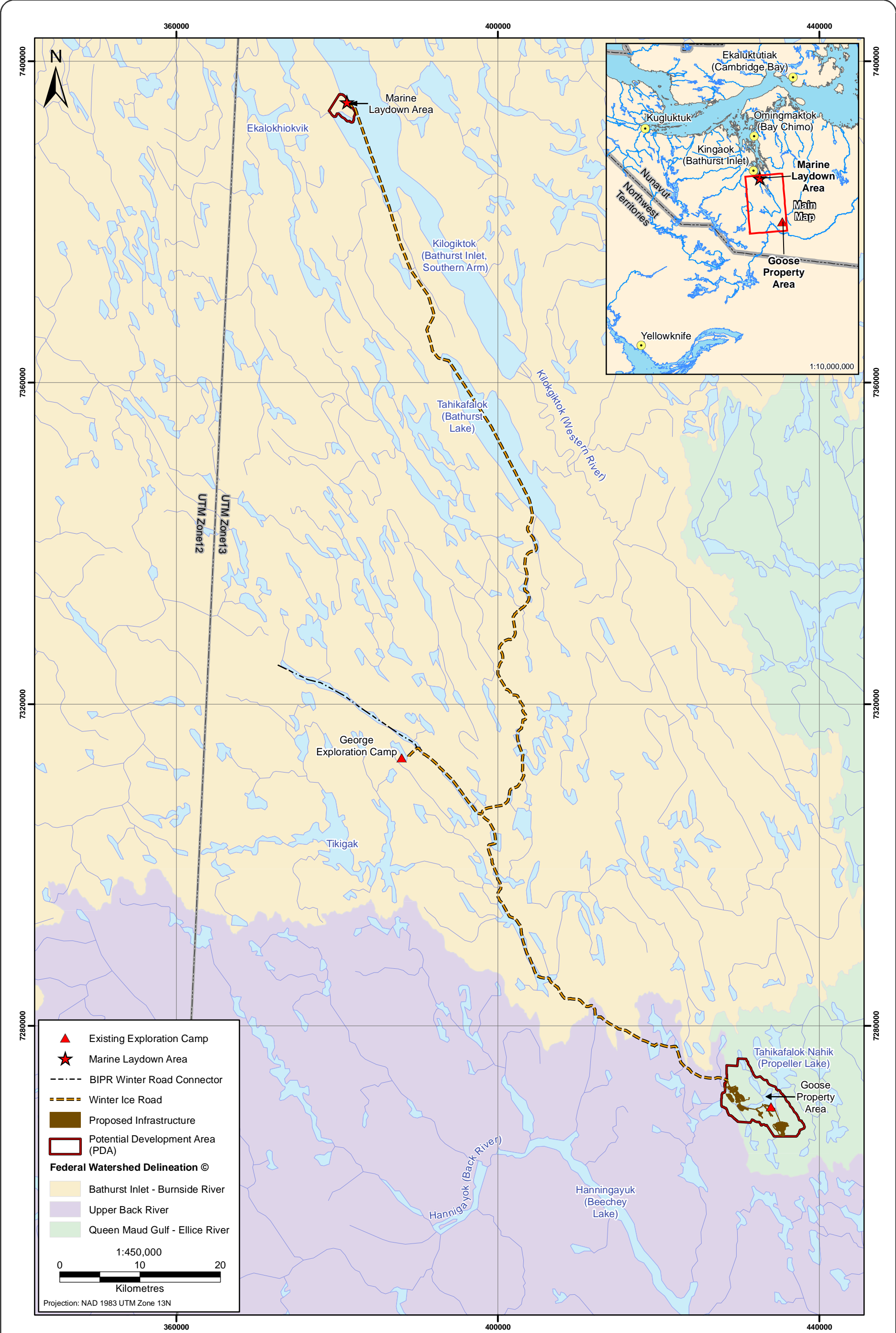
Naunaitkutaani D: Nunauyaq – Goose innani takummataa



**Naunaitkutaani E: Nunaulyaq – Tagiungmiutat Nalaviani inaata
takummahia**



Naunaitkutaani F: Nunaulyaq – Ukiumi hikumi apqut aulavia



Naunaitkutaani G: Qaritauyakkut – Ilitturipkautaa



Sabina Gold & Silver Corp.

NIRB Tour Orientation

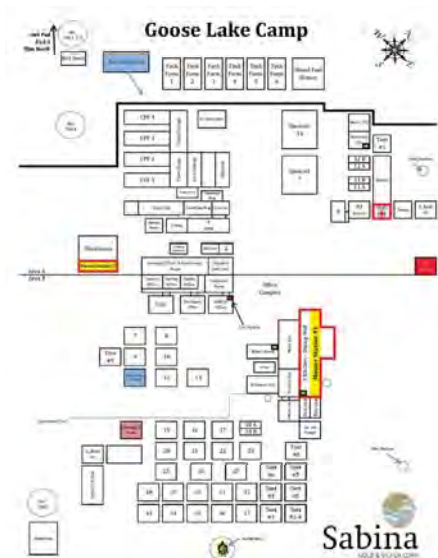
July 2015

Welcome to Goose Lake!

- Washrooms
- Emergency Response & Muster Points
- Sign-In Sheets

Forms: **NOT REQUIRED FOR THIS TOUR**

- Employee Medical Questionnaire
- Emergency Contact Information
- Employee Safety Commitment



Important Areas

- First Aid Room
- Muster Stations
- Fire Alarm Switch
- Washrooms/Dry
- Offices
- PPE-Free Zone





6

Safety Core Values

- ✓ Make zero harm the primary goal in all our places of work
- ✓ Incorporate safety considerations into all business activities
- ✓ Comply or strive to the requirements of all applicable health and safety laws, regulations, and industry standards
- ✓ Provide the necessary resources, information, training, and leadership to protect our workforce against injury, illness and hazards
- ✓ Hold all employees accountable for health and safety requirements
- ✓ Ensure all people understand that “no task is so important that time cannot be taken to complete work safely”



7

Safe, Respectful Workplace

- Each and every person on the Back River Project has the right to be treated with **respect and dignity**.
- **Harassment or violence** will not be tolerated and will result in disciplinary action.
 - Harassment includes comments concerning a person's race, colour, ancestry, place of origin, political beliefs, religion, marital status, physical or mental ability, age, gender or sexual orientation, as well as bullying in any form.
- Report all acts of workplace violence or harassment to your supervisor.



8

Emergency Response

- If you have or see an emergency situation
- Call **Code 1 on the Camp Channel** on the radio
- Identify the nature of the emergency and location
- Follow instructions from Emergency Response Team
 - (Operations personnel for today)
- For your visit there will be a Sabina representative with you at all times.
- Please follow the directions of that representative should an emergency occur.



Fit For Duty and Injuries

Employee Responsibilities:

- Being suitably rested and mentally alert.
- Being physically fit to perform your duties.
- Not being under the influence of any drug or alcohol.
- All injuries, regardless of severity, must be immediately reported to your supervisor.
- Your supervisor is expected to accompany you to get first aid.



Site Information

- **No smoking** in cabins and only in designated areas.
- No open flames in any camp building.
- No firearms, knives or other weapons, ammunition, fireworks or explosive substances are allowed.
- All bathrooms onsite are PACTO style toilets.
- All personnel using a helicopter in their work are required to attend a **safety briefing** by the pilot prior to your flight so no heli flights until this has been completed and the individual has been signed off.



Occupational Health and Safety Policy

The people who work for Sabina Gold & Silver Corp. are the key to our company's success and we are committed to the health, safety and well-being of our entire workforce. To achieve this commitment Sabina will:

- Make zero harm the primary goal in all our places of work.
- Incorporate safety as a core value of our business and integrate safety considerations into all that we do.
- Comply with the requirements of all applicable health and safety laws, regulations, and industry standards.
- Ensure that all persons associated with the company, including managers, supervisors, employees, and contractors take every reasonable measure and precaution to protect the health and safety of all employees and contractors.
- Provide the necessary resources, information, training, and leadership to protect our workforce against injury, illness and hazards.
- Assign employee responsibility and develop accountability mechanisms for health and safety performance within the company.
- Use best practices and management systems to identify, assess and report on potential hazards to eliminate, minimize and manage risks in the workplace.
- Develop company-wide readiness to anticipate and respond to potential incidents.
- Develop and regularly update emergency response plans and procedures for all our operations.
- Through frequent communication, ensure that all of Sabina's employees and contractors understand the Company's health and safety policy and the related management systems.
- Empower and encourage employees, contractors and stakeholders to actively raise any health and safety issues, without repercussion.
- Continuously review and improve our health and safety record.
- Regularly set targets, monitor performance and report on outcomes in order to identify and correct any deficiencies.

Every employee has the right to work in a safe and healthy environment. Zero harm is Sabina's number one objective. We expect a strong commitment to health and safety from all employees and contractors to achieve this goal.

Bruce McLeod

Bruce McLeod
President and CEO
Sabina Gold & Silver Corp.
Feb. 2015

- Outlines the company's commitment to safety from the highest level
- Included in forms – please review



Sustainable Development Policy

Sabina Gold & Silver Corp. regards itself as a responsible employer and mineral developer. We are committed to fostering sustainable development throughout all stages of our activities. We consistently strive to conduct our operations in a manner that balances the social, economic, cultural and environmental needs of the communities in which we operate, to build on this commitment Sabina will:

- Meet or exceed all relevant legislative sustainable development requirements in the regions where we work.
- Ensure appropriate personnel, resources and training is made available to improve our sustainable development objectives.
- Establish clear lines of responsibility and accountability throughout the Company to meet these objectives.
- Implement proven management systems and procedures to facilitate our sustainable development objectives. A priority will be placed on developing and implementing management structures related to the environment, health and safety, emergency response and stakeholder engagement.
- Set an appropriate amount of the environment for both current and future generations. We will make use of responsible assessment methodologies, technologies and controls to identify, monitor and manage risks throughout all stages of mineral development.
- Meet existing and new community and project stakeholders to understand their needs, address their concerns and provide project related benefits to ensure win-win relationships. Our goal is to work and maintain a good balance to operate all our operations with local partners.
- Prioritize economically feasible projects in order to generate shareholder profitability and support long-term positive socio-economic development in the regions where we work.
- Utilize a transparency approach as it applies to potential risks from our activities. Work with employees, contractors and stakeholders to promote a culture of open and meaningful dialogue to ensure that any known or suspected departures from established protocols are reported to management in a timely manner.
- Adopt a zero-tolerance policy to ensure it is consistent with Sabina's current activities and the local business legislation.
- Continually monitor and improve our performance and contribute to sustainable development through pollution prevention, waste management and resource conservation.
- Implement programs at each of our operations to monitor and report compliance and proactively address potential deficiencies in our policies and procedures.

The objectives of our sustainable development policy cannot be accomplished without the active involvement and commitment of every individual. As such, we will regularly communicate this policy and its objectives to our employees, stakeholders and relevant stakeholders. Together, we can foster a culture of sustainable development at Sabina.

Bruce McLeod

Bruce McLeod
President and CEO
Sabina Gold & Silver Corp.
March, 2015

- Outlines the company's commitment to Sustainable Development from the highest level.



Personal Protective Equipment (PPE)

- Your supervisor will identify the PPE required for your work tasks. You are required to wear PPE at all times when engaged in your work.
- An example of PPE is;
 - CSA hardhat
 - CSA-approved boots (Green patch)
 - Reflective vests
 - Shirt; minimum short sleeves
- All PPE must be approved, in proper working condition and used as the manufacturer intended.



Sabina
GOLD & SILVER CORP.

Archeology/Cultural

- Archaeology is the scientific study of past cultures and the way people lived based on the things they left behind.
- Typical archaeological sites in the Back River project area may include:

Inuksuit



Tent Rings



- What to do if you think you've found an archaeological site:
 - Take a waypoint with your GPS if possible.
 - Contact Environmental Personnel or Site Superintendent

It is illegal to disturb an archaeological site.

Sabina
GOLD & SILVER CORP.

Spill Reporting and Clean Up

- All spills (eg. fuel, oil, grease, hazardous materials) must be immediately reported to the your Supervisor and the Environmental Department.
- All spills must be immediately cleaned up.
- Identify spillage source and minimize its footprint to the greatest degree practicable.
 - Spill kits containing spill response equipment (absorbents) are located throughout camp and at drills.
 - See environmental personnel for questions or further support.

Spill Kit

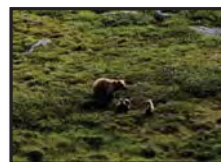


Absorbent Pads



Wildlife

- DO NOT FEED WILDLIFE – this will result in your removal from site.
- If bears, wolverines, arctic fox are seen on site, please do not approach or feed the animals. Contact the Environment and Logistics Department if you see wildlife in and around camp.



If animals are observed around site, please notify logistics and fill out the wildlife log in the kitchen.

Sabina
GOLD & SILVER CORP.



Questions?

www.sabinugoldsilver.com

Have a Safe visit!

Sabina Gold & Silver Corp.

#202 - 930 West 1st Street, North Vancouver, BC V7P 3N4 | T: 604.998.4174 | 888.648.4218 | F: 604.998.1051

**Naunaitkutaani H: Qaritauyakkut – Havangnahuaktainnik
Ilitturipkaidjutaa**



Back River (Hannigayok) Gold Project NIRB Update – Project Overview

July 2015

Who is Sabina Gold & Silver Corp?

- Sabina is a Vancouver, British Columbia based precious metals company on track to become a mid-tier gold producer
- Listed on the Toronto Stock Exchange (TSX: SBB)
- Skilled staff with extensive northern experience
- The Company is committed to sustainable northern development and acknowledges the need for effective community engagement
- Projects in Nunavut
 - Back River Gold Project, Nunavut
 - Wishbone Greenstone Belt, Nunavut
 - A significant silver royalty on the Hackett River Project, Nunavut



Back River Project

- A proposed gold mine in the western Kitikmeot Region of Nunavut, 100% owned by Sabina Gold & Silver Corp.
- Exploration commenced in 1982. Project has had a number of different owners since. Sabina acquired the Project in 2009.
- Mineral resources of 5.3 M oz. gold (measured and indicated) and 1.9 M oz. gold (inferred)
- Small 2015 field program:
 - Environmental baseline data collection
 - Geotechnical and geophysical studies
 - Resource expansion drilling
- Feasibility Study press release issued in May 2015
- Continuation of the environmental assessment and permitting processes



Goose Property (Summer 2014)



Project Overall

Back River Project – Goose Exploration Camp



Goose Property

Summer 2014

Back River - Feasibility Study June 2015 Results

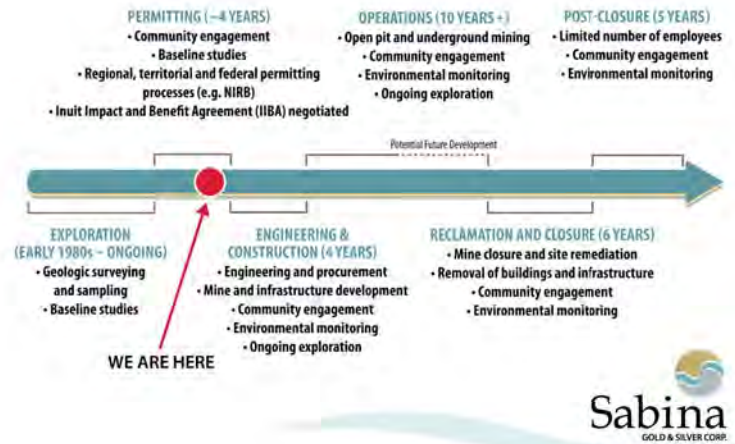
Summary Results @US \$1,200/oz. Gold / 0.87 Exchange		
Pre-Tax NPV(5%) & IRR	\$M / %	\$826 / 26.4%
After-Tax NPV(5%) & IRR	\$M / %	\$539 / 21.7%
Payback	Years	2.2
Mill Throughput	tpd	6,000
Avg. Grade Processed	diluted g/t Au	5.70 g/t
Gold Recovery	%	93.3%
Mine Life	Years	10
Avg. Production (Y1-4)	oz./year	413,000
Avg. LOM Production	oz./year	350,000
On-Site Op. Costs	\$/t milled	\$96.28
Total Cash Cost	\$/US/oz.	\$535
All-In Sustaining Cost	\$/US/oz.	\$671
LOM All-In Cash Cost*	\$/US/oz.	\$850
Pre-Production Capital	\$M	\$695
Sustaining Capital (incl. closure)	\$M	\$529

*LOM All-In Cash Cost includes initial and sustaining capital



Project Overall

Project Timeline



Project Overall

Project Improvements Since DEIS & FS

- George Property development will not be part of the project going forward and will not be included in the FEIS
- Sabina will pursue the NIRB process followed by the NWB Water Licence process. We will not follow the coordinated process.
- Increased underground operations (offset with decreased pit sizes) and additional mining area (Echo)
- The Tailings Storage Facility has been moved off of IOL to the south of project area (KIA request)
- Tailings disposal methodology has changed (KIA request)
- Winter road corridor was shifted away from some potential wildlife habitat (KIA request)

Project Enhancements Since DEIS & FS (cont'd)

- Additional conservatism on potential effects as they relate to climate change (EC and NRCAN request) as well as permafrost and groundwater (NRCAN, AANDC and KIA request)
- Adjusted shipping route away from identified marine mammal and bird habitats (EC and GN request)
- Additional focus on closure options including progressive reclamation (AANDC and KIA request)
- Restrictions in shipping window (Community and GN request)
- Alternatives assessment emphasis on Community Preferences (Communities, AANDC and KIA request)



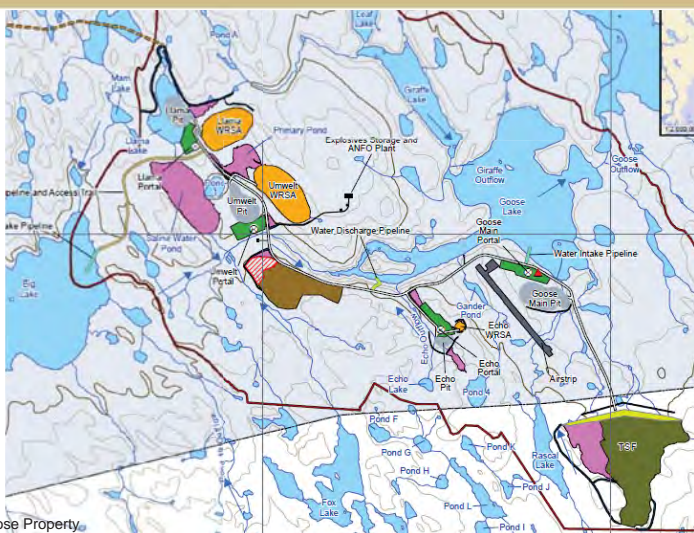
Winter Ice Roads



- MLA – Goose length: 157 km
- George spur length: 13 km
- Winter roads will be constructed annually beginning in Q4 Year -3
- The road will operate mid-January through late April every year
- During construction, 11 trucks will be used to move freight and fuel from the MLA to the Goose site.
- During operations, 18-21 trucks are required annually for freight and fuel from the MLA to Goose.



Goose Property Site Plan



Common Major Infrastructure (Goose and MLA)

- Diesel-fueled power plant;
- Power distribution network;
- Bulk fuel storage tanks;
- Construction and permanent camps;
- Domestic water and waste management facilities;
- Administration offices and truck shop;
- Laydowns and warehouses;
- All weather roads; and
- Winter ice roads.



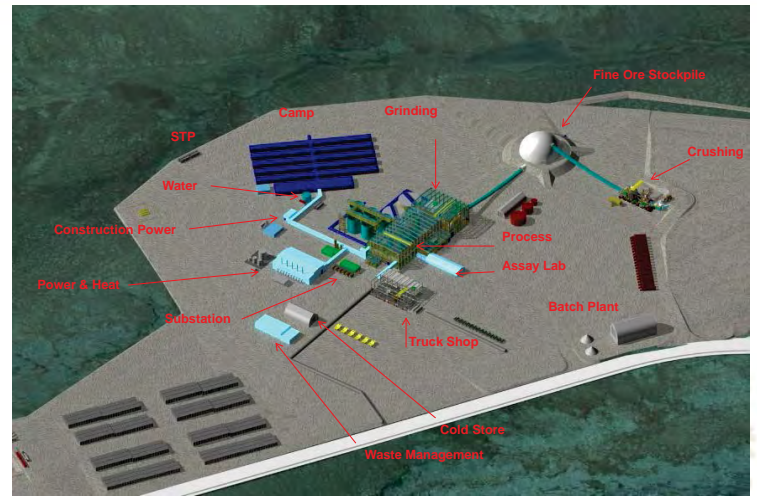
Goose-Specific Infrastructure

- Process plant;
- Assay, Metallurgical, and Environmental Laboratories;
- Tailings storage;
- Waste rock storage;
- Heat recovery system for power plant; and
- Contact water treatment plants.



Goose Infrastructure

Goose Site Plant Layout



Goose Property

Marine Transportation Routes



- Equipment and material originating from western North America or Asia will be consolidated in Vancouver, BC.
- Equipment and material originating from eastern North America or Europe will be consolidated in Becancour, QC.



18

Marine Laydown Area Site Plan



MLA

Back River Project – Site of Marine Laydown Area



Improvements Since DEIS/PFS

	DEIS/PFS	FEIS/FS
Properties	MLA, Goose, George	Exclude George
EA and Water Licence	Coordinated process	Decoupled
Extraction of Deposits - Goose	O/P: Umwelt, Llama, Goose Main; U/G: Umwelt	O/P: Umwelt, Llama, Goose Main, Echo; U/G: Umwelt, Llama, Goose Main, Echo
Tailings Management	One containment (TSF)	Smaller TSF plus two mined out open pits (TFs)
Tailings Storage Facility	Located centrally in PDA and on IOL	Located south of Goose Main and off IOL
Waste Rock	111 Mt	59 Mt

21

Improvements Since DEIS/PFS (cont'd)

	FEIS/FS
Marine Shipping	Route adjusted away from marine mammal and bird habitats
Marine Shipping Window	Additional restrictions
Winter Ice Road	Shifted away from potential wildlife habitat
Climate Change, Permafrost, and groundwater	Additional conservatism
Closure	Alternatives evaluated including progressive reclamation

22

Permitting Milestones to Date

Process Milestone	Date
Submitted Project Proposal To NIRB	June 14, 2012
Project referred from NWB to NIRB for review	July 12, 2012
NIRB issues screening decision report to Minister AANDC	September 25, 2012
Minister directs NIRB to conduct a review of the project under Article 12, Part 5 NLCA	December 17, 2012
Consultation on the Draft Scope for the review including community meetings	February, 2013
Consultation on Draft Guidelines	March/April 2013
NIRB issues Final Guidelines for the Review	April 30, 2013
Submitted Draft Environmental Impact Statement	January 20, 2014
Information Requests sent for response preparation	April 7, 2014
Information Request responses received by NIRB and Technical Review phase commenced	July 31, 2014
Technical Meetings, Community Round-Table and Pre-Hearing Conference	November 13-20, 2014
Pre-hearing Conference Decision released	December 19, 2014

23

Future Project Milestones

Process Milestone	Date
Feasibility Study completion	May, 2015 (complete)
Commence detailed engineering	Q4, 2015
FEIS submission	Q4, 2015
Receive Project Certificate	Q2, 2016
Initial sealift, mobilisation, long lead item procurement	2016
Goose Site: expand airstrip and construct first fuel tank	Q2, 2016
Receive Type A water licence	Q2, 2017
Construct port facilities at MLA	Q1, 2017 to Q2, 2018
Initial winter ice road from MLA to Goose	Q4, 2017 to Q1, 2018
Install construction camp at Goose Site	Q1-Q2, 2018
Commence open pit mining and TSF construction	Q3, 2018
Construct Goose infrastructure	Q1, 2018 to Q3, 2019
Commission process plant	Q3, 2019
First gold	Q4, 2019

24



www.backriverproject.com

Sabina Gold & Silver Corp.

#202 - 930 West 1st Street, North Vancouver, BC V7P 3N4 T: 604.998.4175 | 888.648.4218 F: 604.998.1051

**Naunaitkutaani I: Qaritauyakkut – Akyaqtaqtuutigut tahamnalu
Tariungmiutat Nalaviani takummataa**

Back River Project - Sealift Activities



Back River Project - Marine Laydown Area



Plans for Supply of Back River Project



- Materials brought to Bathurst Inlet from southern Canadian site
 - Up to 5 vessels per year
- All shipments in the ice free summer season
- Materials shipped include all construction materials, heavy equipment, replacement materials through operations
- Fuel shipments for diesel (power production and equipment operation) and aviation fuel
- Ocean-going barges - DWT: 16,000 t; draft: 5.9 m
- Ships: - DWT: 17,000 t; draft: 9.7 m

Current Shipping in the Arctic



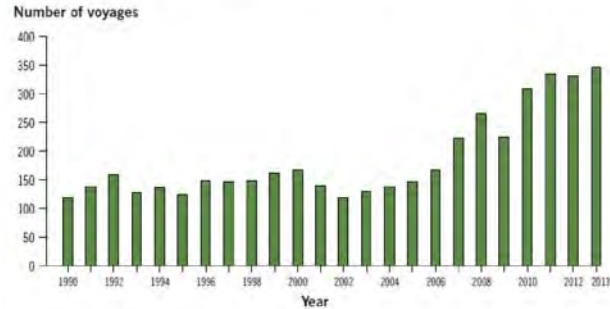
Exhibit 2.1 Arctic waters included in the scope of the audit



Note: Not all northern communities are represented on the map.

Current Shipping in the Arctic

Exhibit 3.2 Vessel voyages in the Canadian Arctic since 1990



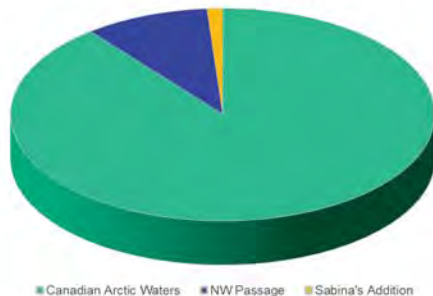
Source: Coast Guard estimates up to 31 December 2013

Current Shipping in the Arctic

- The Arctic Marine Shipping Assessment, 2009, developed a Shipping Database. There were approximately 6,000 individual vessels, many making multiple voyages, in the circumpolar region
- In recent years close to 400 voyages entered Canadian Arctic Waters
- Over the past five years, on average 21 voyages traversed the full NW Passage
- Over the past five years, on average 15 voyages traversed the majority of the NW Passage

Current Numbers in the Arctic

Canadian Arctic Voyages



■ Canadian Arctic Waters ■ NW Passage ■ Sabina's Addition

Shipping in the North - Essential to Supporting the Arctic

- Shipping in the Canadian Arctic has always been the safest and most economically effective means of moving goods to, from and within the region (*Arctic Marine Shipping Assessment, 2009*)
- As per the 2013 Sealford Annual Report, there were no reported incidents last year
- The Commissioner Sustainable Development and Environment (2014) reported that Transport Canada adequately covered safety and environmental protection issues for northern shipping
- Risk management for potential for marine spills is most required and is the focus of Sabina's efforts

Back River Project Assessment Approach



- Sabina is addressing shipping concerns at several different levels of detail appropriate for the expected interaction and level of associated risk
- Extensive detail in the assessment for areas near the proposed marine infrastructure within southern Bathurst Inlet.
- As the route moves further away into northern Bathurst Inlet less detail is required but still very thorough

Back River Project Assessment Approach



- For areas within the commercial shipping routes, our assessment will use existing data
 - Description of potential impacts within the NSA with focus on birds and marine mammals
 - Identification of areas and potential impacts to areas of elevated sensitivity within the NSA
 - Potential accidents and malfunctions within the NSA
 - Establishing relevant management procedures which cover the entire NSA

Shipping Sensitivity



Sabina Marine Shipping - Expected Impacts



- Planned Sealift shipping for Back River represents a very small increase in current vessel traffic
- Expect limited interactions along the main shipping route
- Focus of planning to prevent any spills (fuel shipments are diesel) and preparedness to respond effectively should one occur

Sabina's Shipping Management Plan



- All Transport Canada regulations related to shipping in the Arctic will be observed
- As required by regulation, a SOPEP will be in place prior to any voyage
- Required emergency response capacity will also be in place
- Structured incidental observations of marine mammals and marine birds
- If impacts are observed, adaptive management actions will be taken

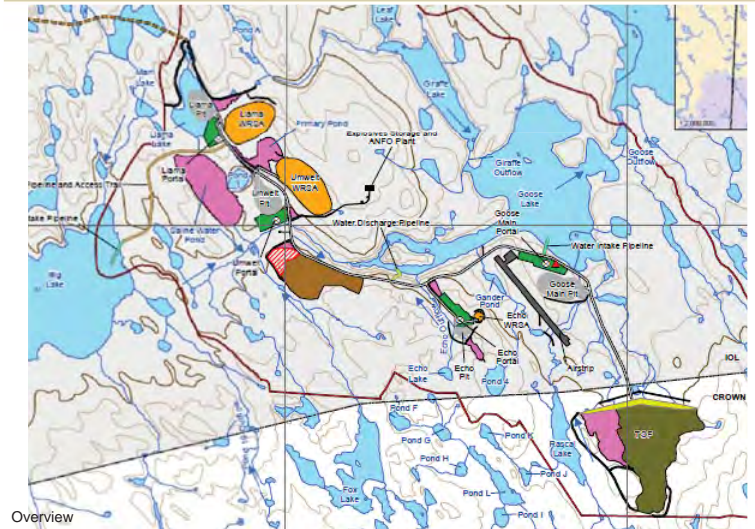
**Naunaitkutaani J: Qaritauyakktut – Iqakunikktut tahamnalu Imaqktut
takummataa**



Back River (Hannigayok) Gold Project NIRB Update - Waste Rock, Tailings, Water & Mine Closure

July 2015

Goose Property Site Plan



Overview

Marine Laydown Area Site Plan



Overview

Waste Rock Overview

- Mined Material = Overburden + Ore + Waste
- Overburden
 - Not significant amounts from Open Pit
- Ore
 - Tailings are potentially acid generating (PAG) and have the potential for metal leaching
- Waste Rock
 - Non-potentially Acid Generating (NPAG)
 - Potentially Acid Generating (PAG)
 - Metal Leaching (ML)
 - Acid Rock Drainage (ARD)



Waste Rock

Waste Rock

Area	Pit	Quantity (tonnes)		Distribution %	
		PAG	NPAG	PAG	NPAG
Goose	Umwelt	13,031,000	5,623,000	70%	30%
	Llama	10,532,000	4,437,000	70%	30%
	Main	10,105,000	14,250,000	41%	59%
	Echo	420,000	554,000	43%	57%
	Total	34,087,000	24,864,000	58%	42%

- PAG material will take decades to oxidize
- NPAG is conservatively estimated to ensure sufficient quantities for construction and closure
- All PAG in WRSAs will be encapsulated with 5 m NPAG (or overburden)
- Underground mine backfill will be composed of PAG waste rock as much as possible



5

Waste Rock

Improvements in Waste Rock Management

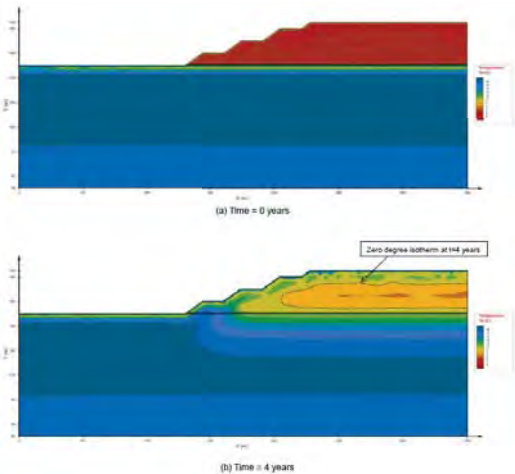
	DEIS/PFS	FEIS/FS
Total Volume excl. Overburden	111 Mt	59 Mt
Waste Rock Storage Design	NPAG/PAG separate	Concurrent placement of NPAG rind with PAG core
Lift Thickness	3 meters	5-8 meters
Closure Cover Thickness	4 meters	5 meters



6

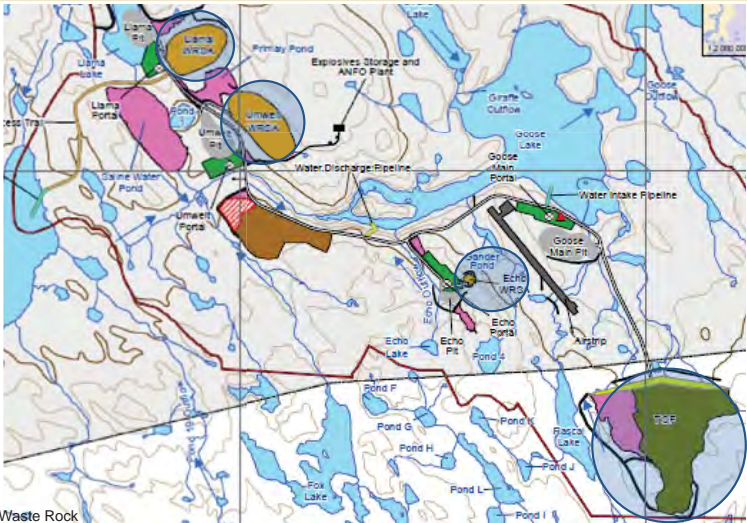
Waste Rock

Waste Rock Freeze-back



Waste Rock

Goose Waste Rock Storage Areas (WRSA)



Waste Rock

Tailings

Property	Value
Solids Content	49% solids (by weight)
Tailings Solids Specific Gravity	2.85
Settled Density	1.2 t/m ³
Plasticity	Non-plastic
Grind Size	50 µm (P ₈₀)

- Average tailings production: 370m³/h
- Tailings are potentially acid generating (PAG), albeit with very slow reaction rates and have a potential for metal leaching
 - exception is Goose Main deposit with no ML potential



Tailings

Areas of Concern - Tailings

- Areas of concern:
 - The location and method of containment of mine tailings
- How Sabina has addressed the concern:
 - Detailed engineering studies
 - Relocation of Tailings Storage Facility (TSF) off of Inuit Owned Land and on to Crown Land due to KIA request
 - Additional use of mined-out open pits (i.e. Umwelt and Goose Main) as safe storage options for tailings
 - Frozen foundation rockfill dam with a geosynthetic liner for TSF
 - Progressive reclamation (e.g. use of waste rock on top of TSF, 5m closure cover)
 - Water treatment and monitoring



Tailings

Improvements in Tailings Management

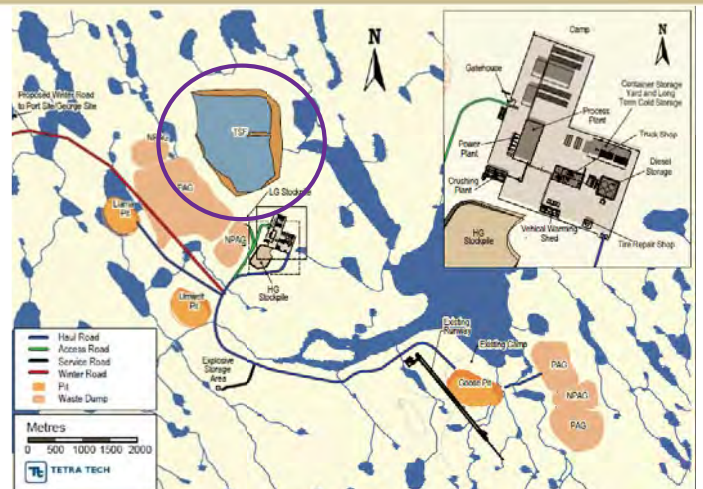
	DEIS/PFS	FEIS/FS
LOM Volume of Tailings	14.9 Mt	19.1 Mt*
Tailings Storage Facility	Located centrally in PDA and on IOL	Located south of Goose Main and off IOL
Tailings Storage	One containment for LOM tailings (14.9 Mt)	TSF (3.8 Mt) plus two mined out open pits (TFs)
Containment	Fully lined	Frozen foundation rockfill dam with a geosynthetic liner
Reclamation	Reclamation at end of mine life	Progressive Reclamation [WR on top of TSF]
Closure cover	2m	5m

*Figure includes results of processing George ore



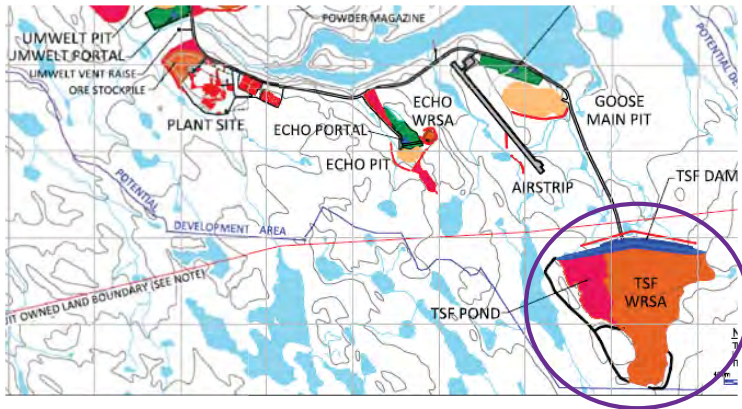
Tailings

DEIS & PFS Tailings Storage Facility (TSF)



Tailings

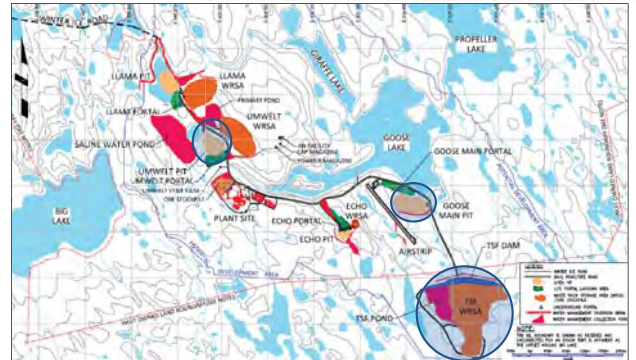
FEIS & FS Tailings Storage Facility (TSF)



Tailings

Tailings Deposition Plan

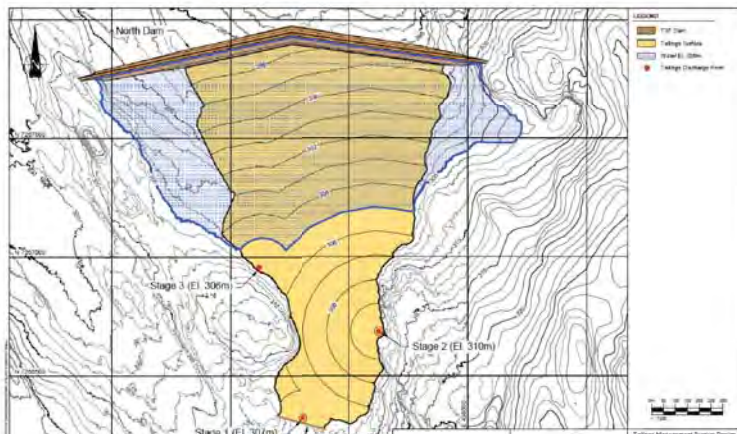
Location	Period (Year and Quarter)	Tailings (tonnes)	Tailings (cubic metres)
TSF	Y-1 Q4 to Y2 Q3	3,777,749	3,148,124
Umwelt TF	Y2 Q4 to Y6 Q3	8,581,468	7,151,223
Goose Main TF	Y6 Q3 to Y10 Q2	7,446,079	6,205,066
Total Project	Y-1 Q4 to Y10 Q2	19,805,296	16,504,413



Tailings

15

Final TSF Layout



Tailings

16

Tailings Storage Facility (TSF) Statistics

- North Dam
 - Height at tallest section: 12 m
 - Total length: 1,744 m
- South Dam
 - Required to contain TSF in PDA
 - Height at tallest section: 3 m
 - Total length: 200 m
- Elevation of deposition to 5 m below overflow

2015 Geotech Drilling at Goose



2015 Geotech Drilling at MLA



Water Management

- ## Water Management

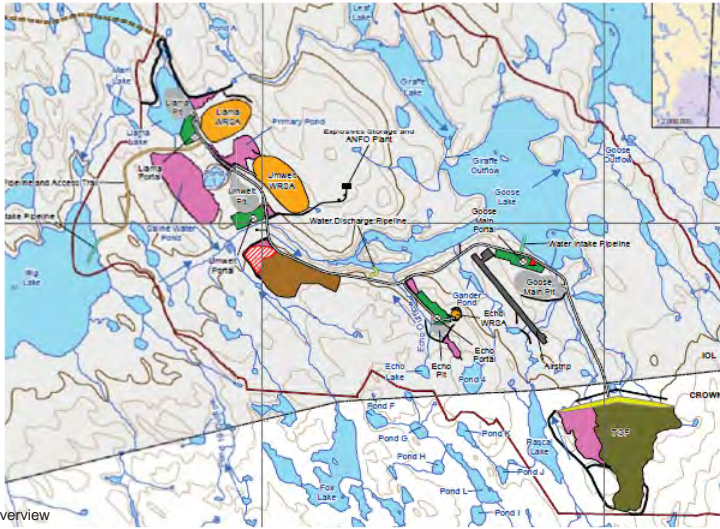


Key Changes in Water Management

*FEIS only



Goose Property Water Management



Overview

Water Management Facilities at Goose

Description	Type of Water	Capacity (m³)
Llama Lake	Contact water	819,600
Llama WRSA Pond	Contact water	26,000
Llama Reservoir	Contact and saline water	5,600,000
Umwelt WRSA Pond	Contact water	30,100
Ore Pond	Contact water	11,000
Umwelt Saline Water Pond	Saline water	1,022,500
TSF WRSA Pond	Contact water	1,163,100
Primary Pond	Contact water	316,700
Echo Diversion Pond	Non-contact water	18,000
Echo WRSA Pond	Contact water	61,000



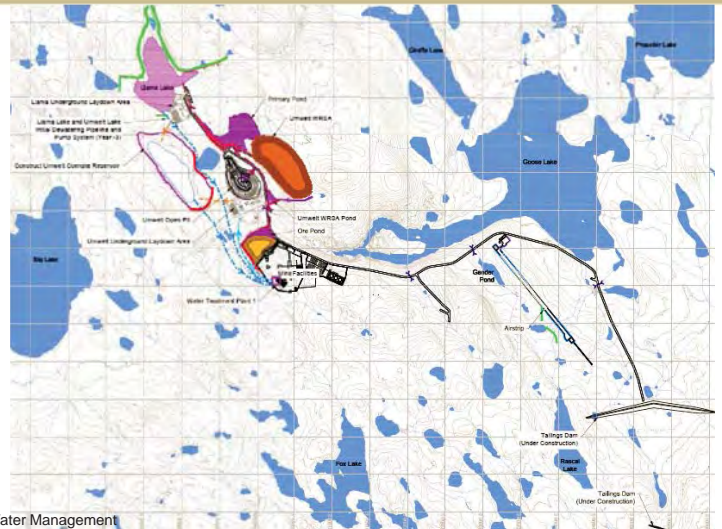
Water Management Phases - Goose

- The Goose area water management plan is divided into 4 operational phases, based on the tailings deposition plan:
 - Phase 1 Construction: Llama lake storage and TSF Construction
 - Phase 2 Operations, Stage 1: TSF Operation
 - Phase 2, Stage 2: Umwelt TF Operation
 - Phase 2, Stage 3: Goose Main TF Operation
 - Phase 3: Closure
 - Phase 4: Post-closure



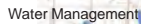
Water Management

Water Management: Phase 1

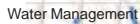


Water Management

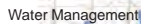
Water Management: Phase 2, Stage 1



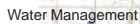
Water Management: Phase 2, Stage 2



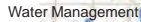
Water Management: Phase 2, Stage 3



Water Management: Phase 3



Water Management: Phase 4



Saline Groundwater

- 
- Sabina
GOLD & SILVER CORP.

Groundwater Zone at Umwelt



Groundwater Zone at Llama



Domestic Water and Waste

- Domestic water supply
 - Goose: freshwater from Goose Lake
 - MLA: saltwater from Bathurst → desalination
 - Potable treatment incl. chlorination and monitoring to Canadian Drinking Water Guidelines
- Domestic waste management
 - Waste sorting
 - Incinerate inert waste incl. sewage sludge
 - Treated sewage effluent discharged to tundra
 - Landfill inert materials
 - Backhaul hazardous materials



Water and Waste Management

Area of Concern Waste and Water Management

- Area of concern:
 - Protection of local water systems and wildlife from exposure to wastes and other contaminants
- How Sabina has addressed the concern:
 - 4 freshwater water quality baseline studies and freshwater water quality effects assessment
 - Water Monitoring and Management Plan; Aquatic Effects Monitoring Plan; Mine Waste Rock and Tailings Management Plan; Risk Management and Emergency Response Plan; Land, Water and Ice Based Spill Contingency Plan; Landfill and Waste Management Plan; Hazardous Materials Management Plan; and other plans.
 - Federal and territorial regulations



Water and Waste Management

Closure Objectives

- Progressive reclamation integrated into the project's design criteria
- Design the Mine for Closure: This involves identifying the processes that will act upon the mine components after mine closure so that they can be optimized into the mine design
- Achieve Physical Stability
- Achieve Chemical Stability
- Consider Future Use and Aesthetics



Closure

Project Phases

Name	Activities	Duration	Project Year	Calendar Year*
Construction	Mobilization, earthworks, facilities, equipment, mine development	4 years	-4 to -1	2016 – 2019
Operation	Mining, processing, progressive reclamation	10 years	1 – 10	2020 – 2029
Reclamation and Closure	Demolition, water treatment	6 years	10 – 15	2029 – 2035
Post Closure Monitoring	Water quality, geotechnical, terrestrial and aquatic effects	5 years	16 - 21	2036 - 2041

*Currently estimated basis



Closure

Closure of Open Pit Mines

- Open Pits
 - Progressive reclamation with infilling during operations
 - Install protective boulder fences
 - Remove dewatering equipment
 - Develop permanent overflow/outflow
 - Landfill mobile equipment



Closure

Closure of Underground Mines

- Underground Mines
 - Progressive reclamation during operations
 - Remove dewatering and pumping equipment
 - Plug decline with waste rock
 - Plug vent raises with concrete
 - Landfill mobile equipment



Closure

Closure of Infrastructure

- Buildings & Equipment
 - Backhaul hazardous waste
 - Demolish structures
 - Landfill non-hazardous waste
- Roads, Pads, Airstrip
 - Maintenance
 - Demolish water management structures
 - Restore drainage



Closure

Closure of Domestic Waste Facilities

- Landfills
 - Cover with 5 m NPAG
 - Re-slope to 3H:1V
- Contaminated Soils
 - Investigations
 - Treatment, i.e. landfarming



Closure

Closure of Tailings Storage Facilities

- TSF
 - For up to 2 years after depositing tailings, TSF will be used for water storage.
 - Progressively, 5 m of waste rock will cover the tailings to ensure freezing.
 - Water storage in west limb until end of active water treatment (~6 years after end of production).
- Umwelt TF
 - Permanent 5 m of water cover.
 - Water treatment until discharge achieves MMER.
- Goose Main TF
 - Similar to Umwelt TF and may store inert material.



Closure

Closure of Waste Rock

- Waste Rock Piles
 - Cover with 5 m NPAG
 - Re-slope to 3H:1V
- Water Management
 - Landfill pumps & pipes
 - Breach diversion berms
 - Breach water ponds
 - Breach TSF containment dam



Water Treatment and Post-closure Monitoring

- Water Treatment
 - Build Closure camp
 - Treat water seasonally until approx. Year 16
 - Demolish treatment plant
 - Demolish camp
 - Close landfill
- Monitoring
 - Geotechnical inspections
 - Ground temperature
 - Water quality
 - Aquatic effects
 - Terrestrial animals



Closure



www.backriverproject.com

Sabina Gold & Silver Corp.

#202 - 930 West 1st Street, North Vancouver, BC V7P 3N4 T: 604.998.4174 | 888.648.4218 F: 604.998.1051

**Naunaitkutaani K: Qaritauyakkut – Angutitigut tahamnaluk Ukiumi
Apqut takummataa**

Winter Road Corridors



Terrestrial Environment (Volume 5): Grizzly Bear



- **Studies Conducted**
 - 2 years of DNA mark-recapture program, 5 years of den surveys, 6 years of incidental observations, remote cameras, available traditional knowledge
- **Potential Project Effects**
 - Potential disturbance of Grizzly Bear due to noise and barriers to movement, potential loss of habitat, potential loss of reproduction, and potential vehicle incidents
- **Mitigation and Management**
 - Project Design to avoid high-value habitat
 - Helicopter management
 - Use of winter roads only to connect Project areas
 - Road management: speed limits, wildlife right of way & timing
 - Wildlife Mitigation & Monitoring Program
- **Final Conclusion – No significant Project or Cumulative Effects**

Terrestrial Environment (Volume 5): Muskox



- **Studies Conducted**
 - 3 years of aerial surveys, incidental observations, habitat mapping, remote cameras, available traditional knowledge
- **Potential Project Effects**
 - Potential disturbance of Muskox due to noise and barriers to movement, potential loss of habitat, potential loss of reproduction, and potential vehicle incidents
- **Mitigation and Management**
 - Project Design to avoid high-value habitat
 - Helicopter management
 - Use of winter roads only to connect Project areas
 - Road management: speed limits, wildlife right of way & timing
 - Wildlife Mitigation & Monitoring Program
- **Final Conclusion – No significant Project or Cumulative Effects**

Terrestrial Environment (Volume 5): Wolverine/Furbearers



- **Studies Conducted**
 - 2 years of DNA mark-recapture program, 5 years of den surveys, 6 years of incidental observations, remote cameras, available traditional knowledge
- **Potential Project Effects**
 - Potential disturbance due to noise and barriers to movement, potential loss of habitat, potential loss of reproduction, and potential vehicle incidents
- **Mitigation and Management**
 - Project Design to avoid high-value habitat
 - Helicopter management
 - Use of winter roads only to connect Project areas
 - Road management: speed limits, wildlife right of way, timing
 - Wildlife Mitigation & Monitoring Program
- **Final Conclusion – No significant Project or Cumulative Effects**

- 4 years of water bird aerial surveys, 4 years of upland breeding bird surveys using regional and international standard survey methods, breeding surveys, available traditional knowledge

- Potential disturbance due to noise and barriers to movement, potential loss of habitat, potential loss of reproduction, and potential vehicle incidents

- Project Design to avoid high-value habitat
- Helicopter management
- Use of winter roads only to connect Project areas
- Road management: speed limits, wildlife right of way, timing
- Wildlife Mitigation & Monitoring Program



Sabina
GRAD & SALVEN CORP.

B-1

- 4 years of raptor surveys including nest surveys and reproductive success surveys, incidental observations, available traditional knowledge

- Potential disturbance due to noise and barriers to movement, potential loss of habitat, potential loss of reproduction, and potential vehicle incidents

- Project Design to avoid high-value habitat
- Helicopter management
- Use of winter roads only to connect Project areas
- Road management: speed limits, wildlife right of way, timing
- Wildlife Mitigation & Monitoring Program



Sabina
GRAD & SALVEN CORP.

-11

- 20 aerial surveys, collar data, habitat mapping, resource selection function, remote cameras, extensive traditional knowledge

- Potential disturbance of Caribou due to noise and barriers to movement, potential loss of habitat, potential loss of reproduction, and potential vehicle incidents

- Project Design to avoid high-value caribou habitat
- Helicopter management
- Use of winter roads only to connect Project areas
- Road management: speed limits, wildlife right of way, timing
- Wildlife Mitigation & Monitoring Program



Sabina
GOLD & SILVER CORP.

B.

A vertical collage of four images. The top image shows a silhouette of a person standing on a beach looking out at a sunset over the ocean. The second image shows a snowy, mountainous landscape with a small cabin. The third image shows a large, colorful floral arrangement. The bottom image shows a classroom with students sitting at desks, looking towards a screen displaying a presentation.



E.2

Caribou - Bathurst Herd Video



Caribou - Beverly Herd Video



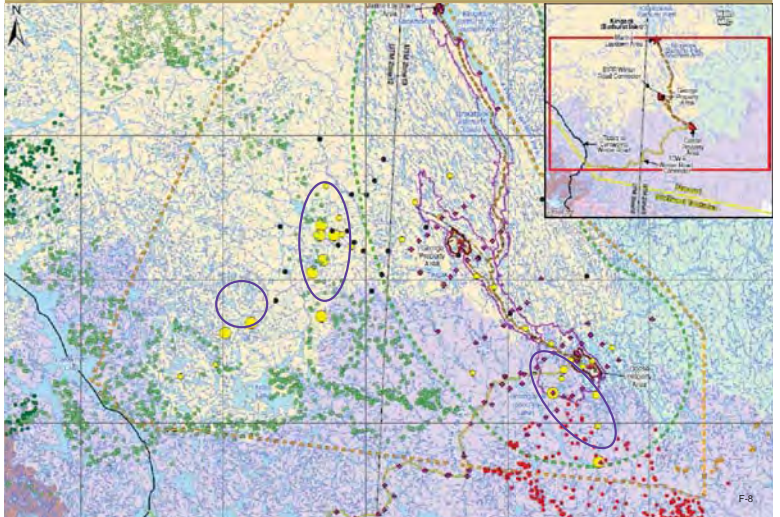
Caribou - Aerial Surveys



- Caribou surveyed in a grid
- Spring, calving, post-calving and summer
- 2001, 2002, 2007, 2008, 2010
- Few/no caribou during spring, calving and summer
- In some years, large groups during post-calving in the west of RSA



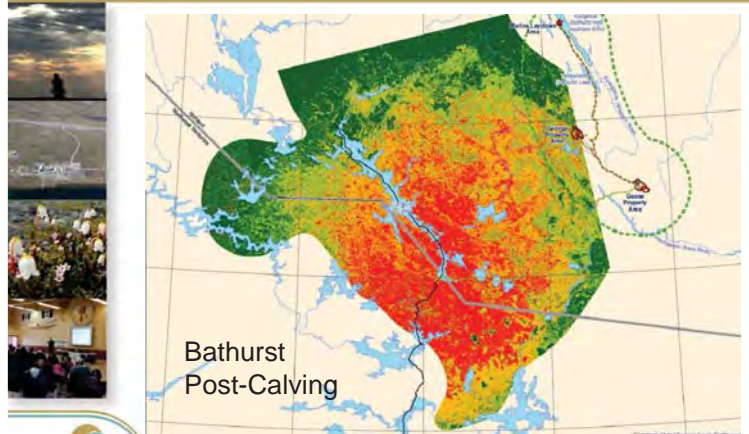
Caribou - Remote Cameras, Collars and TK/TU



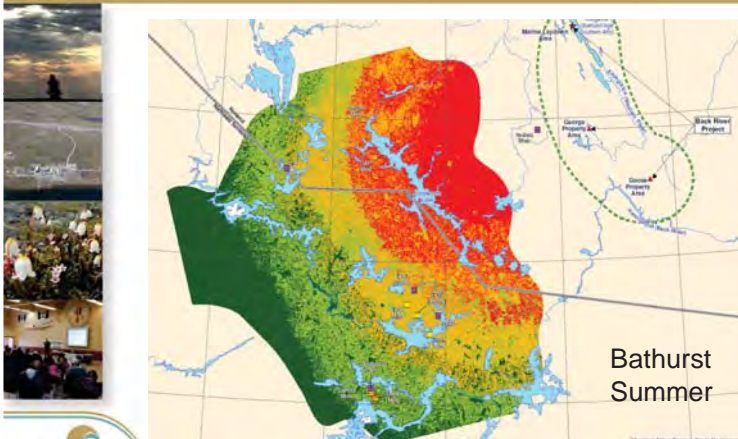
Caribou - Identifying Important Areas for Management



Caribou - Resource Selection Function



Caribou - Resource Selection Function



Caribou - Key Mitigation



- **Habitat loss**
 - Minimized footprint
 - No all-season access roads
 - Footprint designed around important areas for caribou
- **Disturbance**
 - Activities halted if large groups of caribou within 500 m
 - Aircraft will fly >300 m from large groups of caribou, where possible
 - Above-ground blasting planned with consideration to sensitive caribou periods
- **Disruption of Movement**
 - No ice breaking (D&U caribou)
 - Winter access roads only (outside of times when Bathurst caribou present)

Caribou - Key Mitigation



- **Direct Mortality**
 - Truck speed limited to 60 km/h
 - 40 km/h when caribou within 250 m of road
 - Wildlife right of way
 - Clearing outside of wildlife sensitive periods
 - Pre-clearing surveys
- **Indirect Mortality**
 - No public road access
 - Hunting prohibited
- **Attraction**
 - Waste management, camp hardening, employee education, no feeding
- **Exposure to Contaminants**
 - Cyanide destruction inside mill
 - Waste management plan, spill response plan
 - Exclusion if water in TIA does not meet guidelines

Caribou – Summary of Draft EIS Results



- **Habitat Loss and Disturbance (Residual, Not Significant)**
 - Project outside of main Bathurst range, so small proportion affected
- **Disruption of movement & Direct mortality (Not residual)**
 - Access roads active when Bathurst caribou not present, speed limits
- **Indirect mortality (Not residual)**
 - Roads closed – no hunting expected

Caribou – Summary of Draft EIS Results



- **Attraction (Not residual)**
 - Not expected for caribou
- **COPC (Not residual)**
 - Environmental Risk Assessment indicated no effect for caribou
- **Reproduction (Residual, Not Significant)**
 - Post-calving & summer range important for reproduction

Cumulative Effects on Caribou - Bathurst Herd



Assuming 25% drop in usage within disturbance area, adjusted

Loss of caribou habitat in CEA area:			
	Lost	Disturbed	Total
4 km	0.3%	0.4%	1%
14 km	0.3%	1.4%	2%

- **CEA Assessment**
 - Residual effect
 - low magnitude
 - **Not Significant**

Caribou - Summary of Effects on Bathurst Herd



▪ Effects Assessment

- 8 potential effects evaluated
- 3 residual effects – habitat loss, disturbance, reproduction
- All residual effects Low Magnitude
- All effects **Not Significant**

▪ Cumulative Effects Assessment

- 3 potential effects evaluated – habitat loss, disturbance, reproduction
- 3 residual effects
- All residual effects Low Magnitude
- All effects **Not Significant**

**Naunaitkutaani L: Hiqinnuyakkt qunnialihimayuq – Bathurst
tuktutait auladjutait**

Nunavunmi Avatiliriryuakkt Katimayit ihuahilimairamikku qunniangnahuaqtaraluanat registrymun angigingmagu. Tuatugumagungni tahamna qunniaq NIRBkut ilitturipkaklugit.

Nunavut Impact Review Board
29 Mitik Street
P.O. Box 1360
Cambridge Bay, NU X0B 0C0
Hivaayautaa Akiittuq: (866)-233-3033
Hivayautaa: (867)-983-4600
Faxtauq Naunaitkutaa: (867)-983-2594
Qaritauyakkt Titiraqlugu: info@nirb.ca

**Naunaitkutaani M: Hiqinnuyakkut Qunnialiuhimayuq – Beverly
tuktutait Auldjuhiit**

Nunavunmi Avatiliriryuakkut Katimayit ihuahilimairamikku qunniangnahuaqtaraluanat registrymun angigingmagu. Tuatugumagungni tahamna qunniaq NIRBkut ilitturipkaklugit.

Nunavut Impact Review Board
29 Mitik Street
P.O. Box 1360
Cambridge Bay, NU X0B 0C0
Hivaayautaa Akiittuq: (866)-233-3033
Hivayautaa: (867)-983-4600
Faxtauq Naunaitkutaani: (867)-983-2594
Qaritauyakkut Titiraqlugu: info@nirb.ca