



June 17, 2021

John Roesch
Senior Project Officer
Kitikmeot Inuit Association
Kugluktuk, NU X0B 0E0

Keith Morrison
Technical Advisor II
Nunavut Impact Review Board
Cambridge Bay, NU X0B 0C0

Omer Pasalic
Water Resources Inspector
Crown-Indigenous Relations and Northern Affairs Canada
Iqaluit, NU X0A 0H0

Richard Dwyer
Manager of Licensing
Nunavut Water Board
Gjoa Haven, NU X0B 1J0

RE: Back River Project 2021 Site Update

On March 2, 2021, Sabina provided notice to the NIRB and others that Sabina would be resuming operations at the Back River Project (the Project) on or about March 22. Sabina has and will continue to operate under the Back River COVID Operational Framework (attached) that was successfully established and implemented in 2020. We were, and remain, very cognizant of the COVID related risks the Kitikmeot communities face and reducing that risk was an important part of our decision.

With the Project now successfully and safely open for several months, we wanted to take this opportunity to provide an update to the relevant parties. This update is meant to provide transparency on ongoing exploration and initial construction activities at the Back River Project, plans in 2021 as well as site-specific conditions at the Goose Property, George Property, and the Marine Laydown Area. In addition, we have provided information on environmental monitoring programs and baseline data collection as well as the COVID-19 protocols established. We understand that inspections could continue to be hindered in 2021 and we are hopeful this document provides insight into our activities and ongoing compliance.

COVID Protocols Established

Sabina first established a COVID-19 Task Force in April 2020 to allow for the development of protective measures and relevant information for the 2020 field season. Sabina developed a COVID Operational Framework document which established many of the measures needed to reduce the risk of COVID affecting our operations. The current version of the Operational Framework has been included in Appendix A.

In order to gain access to Nunavut, all personnel must follow the Sabina pre-screening processes (temperature checks, questionnaires, and medical check in Yellowknife before boarding the charter

to site) and they must complete one of two Nunavut entry forms. Sabina issues these to Nunavut's Chief Medical Officer of Health to get a travel exemption into Nunavut. Everyone must go through this process and each individual must receive an exemption letter from the Chief Medical Officer of Health. Thus far, all personnel proposed have successfully completed this process.

Sabina has improved its testing capabilities and now has the ability to complete Health Canada approved PCR, Antigen and Antibody tests. A network of these testing capabilities is deployed in Edmonton (Antigen), Yellowknife (PCR and Antigen), and at the Back River Project (PCR, Antigen and Antibody). Sabina completes pre-deployment and onsite surveillance testing of all personnel. All tests are Health Canada approved and are deployed utilizing trained medical professionals.

As of August 1, 2021 all personnel entering the Project site will require a first vaccinations against COVID, or, they may be required to isolate for an additional period of time prior to entering site.

Goose Property Status Update

As noted previously, Sabina's Goose Camp re-opened in March 2021. Upon re-opening the camp infrastructure and equipment were inspected as well as all fuel storage and fuel storage areas. All areas inspected were of sound status, and no signs of wildlife or other damage were noted. Sabina encountered technical issues with generators at site leading to a slower than normal start however all issues have now been resolved. Snow loading and temperatures at the Goose Property appear to indicate a delayed freshet for 2021 which Sabina will continue to closely monitor. Since startup, Sabina has monitored various environmental aspects of the operation and has experienced no reportable incidents or spills.

As anticipated, Sabina did have small groups of caribou move through the Back River Project in April/May. Sabina continues to monitor collar data provided by the Government of Northwest Territories to stay informed of the herds location. As the herd progresses towards the Goose Property, site is notified of their progress and asked to stay vigilant and if necessary, the agreed upon mitigations including halting heavy equipment, blasting, fixed wing & helicopters flights are implemented. Mitigations measures were implemented in 2020 and were observed to be effective with the herd continuing their migration, however they are not been required to implement in 2021 to date.

Sabina anticipates the Back River Project will operate through to December 2021. It is anticipated that the population at Goose Camp will remain below approximately 100 people at a time for the remainder of 2021 due to COVID restrictions.

Early activities at the Goose Property have largely consisted of snow clearing and general maintenance, exploration drilling, harvesting of construction aggregate (quarrying), and preparation for further progress on the exploration decline including the establishment of a shop and warehouse close to the portal location.

Exploration activities planned to occur at the Goose Property throughout the remainder of 2021 may include:

- Diamond drilling, focused on defining and expanding the high grade corridor of mineralization within the Umwelt underground, initially at the Vault Zone and in the up-plunge direction towards the bottom of the proposed pit. Further evaluation of new discoveries at Umwelt, Llama and Nuvuyak as well as already defined resources at Goose main and Echo will also occur.
- Continued progress on an exploration decline which will allow us to fully evaluate and further explore the high-grade Umwelt deposit.
- Outcrop mapping activities at a regional scale to better identify and utilize surface geology.

Initial Construction activities which are planned to occur at the Goose Property throughout the remainder of 2021 may include:

- Extending the all-weather airstrip to allow aircraft of different sizes to land year-round with an increased degree of success.
- Site road network expansion including watercourse crossings.
- Initial construction of a 10M liter bulk fuel tank and containment.
- Additions to site infrastructure including laydown areas.
- Geotechnical drilling.
- Quarrying and crushing operations.

Based on 2021 activities all required security under Part C, Items 1 & 2, of the Back River Project Type A Water Licence (2AM-BRP1831) has been furnished to KIA and CIRNAC.

Environmental monitoring and baseline programs planned at the Back River Project include Atmospheric, Archaeology, Water Quality, Fisheries, Wildlife, Geochemical/ Geotechnical, Hydrology, and Vegetation programs in 2020.

The Goose Property meteorological station underwent full calibration and maintenance in September 2020. All meteorological sensors such as the wind sensor, solar radiation sensor, barometer, snow depth sensor, etc., were factory calibrated prior to installation and swapped out in the field. Sabina will revisit the Goose meteorological station in 2021 as well as implement an initial Air Quality monitoring program for dustfall and passives.

Fisheries programs were completed in 2020 to address requirements related to the eventual construction of the Rascal Stream Diversion, which will connect Rascal Stream East to Gosling Pond with flows continuing through Rascal Stream West and entering Goose Lake. In September 2020, construction of downstream velocity mitigation features (i.e., 15 instream rock weirs) was completed downstream of the Rascal Stream Diversion in Rascal Stream West. Habitat data (stream depths, widths, velocities, discharge, etc.) was collected at each rock weir location to

characterize stream conditions before and after installation. Sabina will revisit these locations during 2021 freshet to confirm their status and operating condition.

In addition, Sabina has multiple water quality, archaeology, vegetation, wildlife, geochemical/geotechnical, and hydrological environmental field programs planned for 2021. Water quality and hydrological programs will focus on collecting necessary field data in support of Back River Project hydrodynamic modelling as well as in support of the Aquatic Effects Monitoring Plan (AEMP). Vegetation monitoring will continue to establish baseline conditions and implementation of the Vegetation Monitoring Plan (VMP). Archaeology field programs at Back River will survey areas of potential development for basic reconnaissance and recording of archaeological sites if warranted. All additional applicable data will be provided via annual reporting.

Goose Property Photos

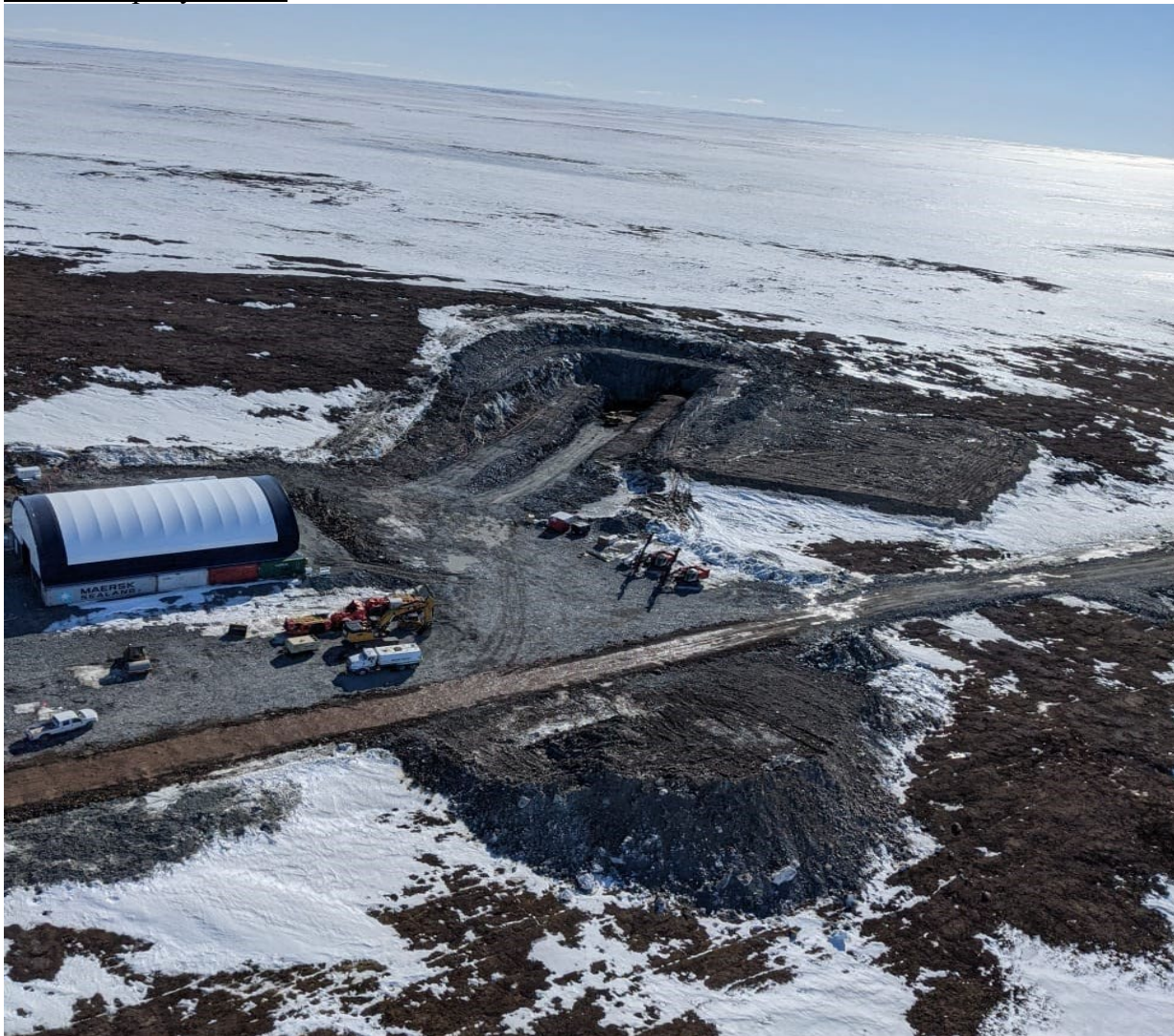


Figure 1. Exploration Decline at the Goose Property (May 2021).



Figure 2. Exploration Decline and adjacent shop/pad at the Goose Property (May 2021).



Figure 3. Snowpack at Rascal Stream Crossing (May 2021).



Figure 4. Grading the Goose Property All-weather Airstrip. Exploration Diamond Drill Rig in background (May 2020).



Figure 5. Unloading a Generator at the Goose Property Icestrip (April 2021).

Marine Laydown Area (MLA) Status Update

The MLA was inspected on May 24, 2021 and no signs of wildlife damage were noted, equipment was started, and all fuel storage and fuel storage areas were inspected. The 10M liter fuel tank which is initially constructed at the MLA Bulk Fuel Storage Area, and its associated pad, wintered well and showed no signs of erosion or thermal degradation. Ice on Bathurst Inlet showed no signs of melt and the MLA camp was still drifted in with the exception of the windswept all-weather airstrip.

Sabina notes the MLA will be utilized as a fueling station for the Government of Northwest Territories (GNWT) to complete an aerial caribou survey from approximately June 1 – 12.

Sabina's current intentions are to open the MLA for operations in 2021 on approximately July 1. Initial Construction activities which are planned to occur at the Goose Property throughout the remainder of 2021 may include:

- Completing the construction of the 10M bulk fuel tank, containment, and fueling line.
- Receipt of a sealift including bulk fuel delivery and offload.
- Additions to site infrastructure including laydown areas, shoreline pads, and general maintenance.
- Installation of a new camp structures.

Environmental monitoring programs and baseline data collection will also continue to occur at the MLA. Environmental monitoring and baseline programs occurring at the Back River Project in 2021 consist of atmospheric, archaeology, water quality, fisheries, wildlife, geochemical/geotechnical, hydrology, and vegetation programs.

MLA Photos

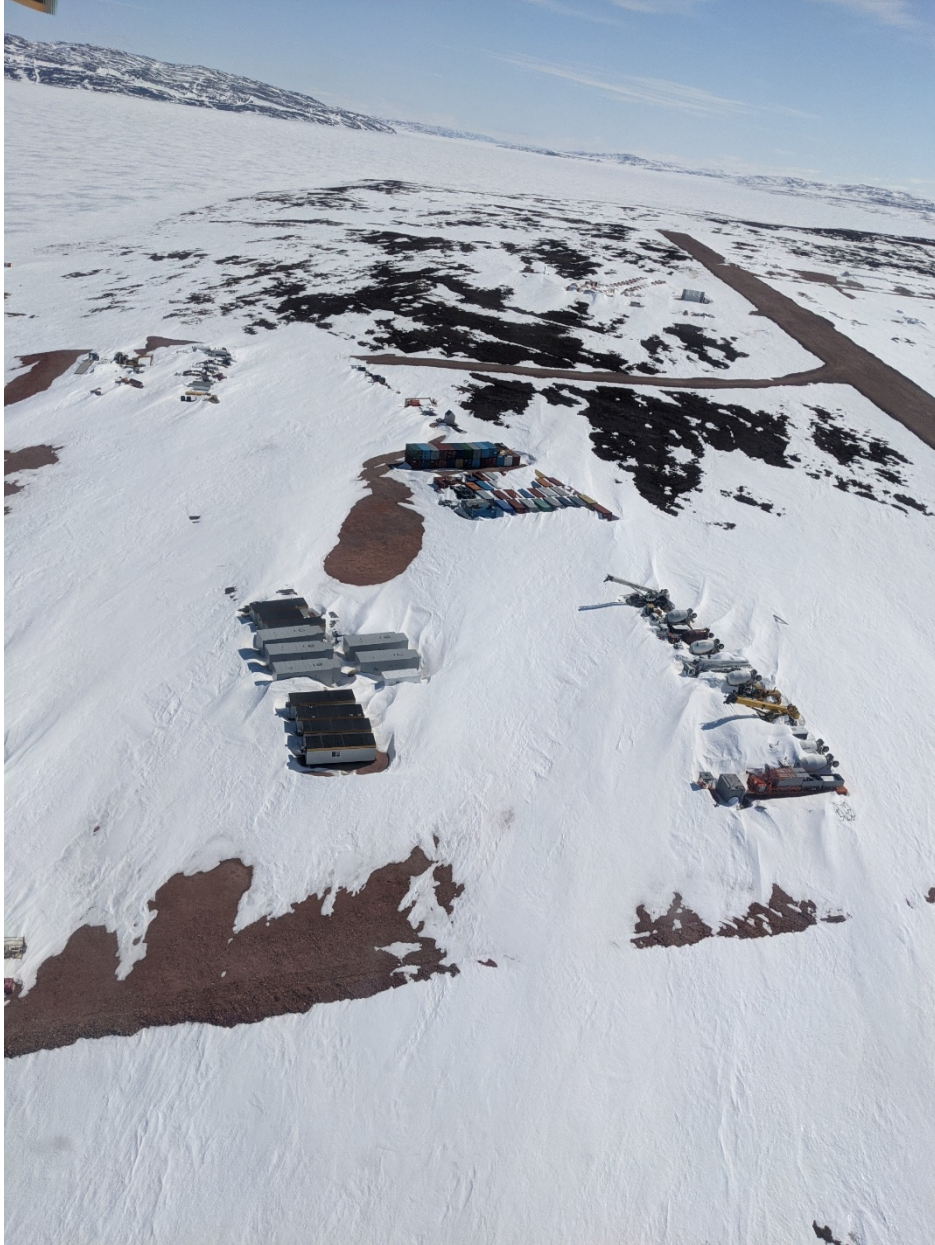


Figure 6. Aerial Image of Sabina's Marine Laydown Area (MLA) (May 2021).

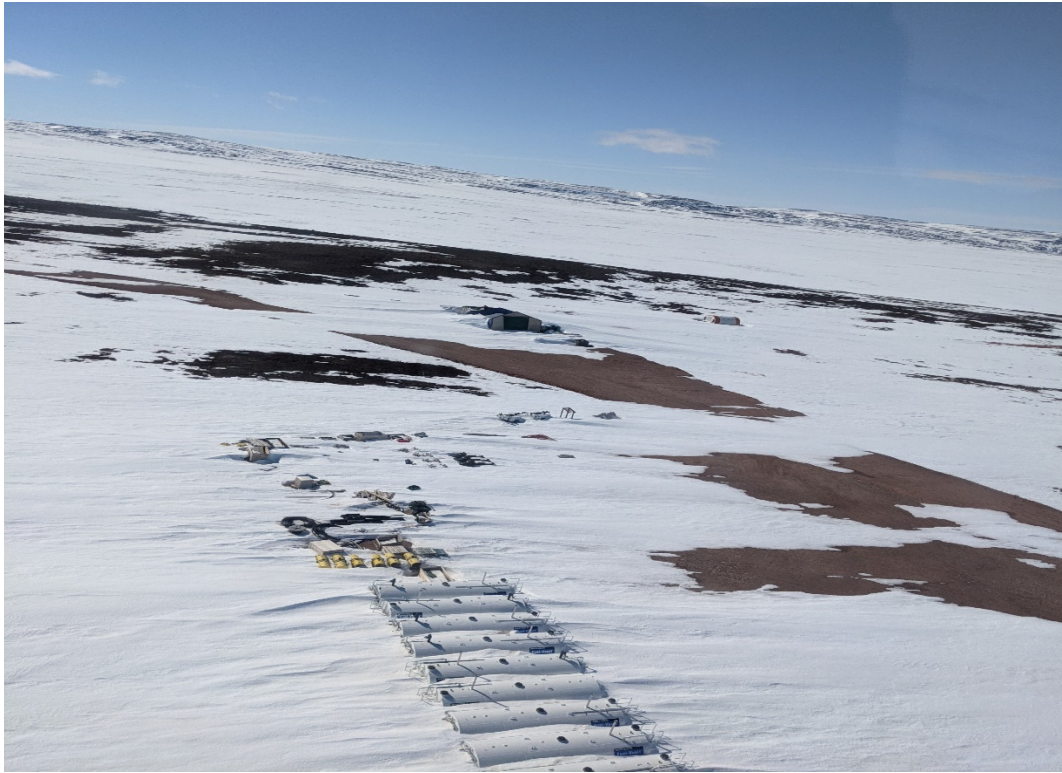


Figure 7. Aerial Image of Sabina's Marine Laydown Area (MLA) (May 2021).

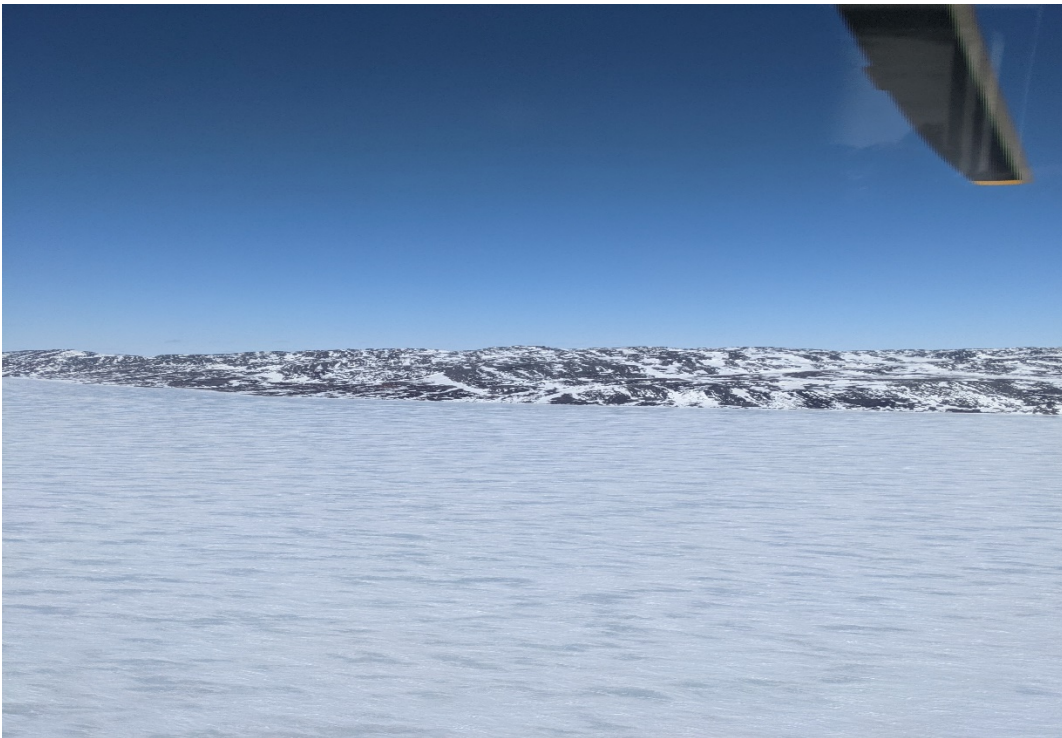


Figure 8. Bathurst Inlet Ice Cover (May 2021).

George Lake Project Status Update

George exploration camp was surveyed aerially in May 2021. The camp is in good condition, much the same as it was last year during Sabina's check-in. Camp remains drifted in snow.

For the first time in several years exploration activities are tentatively planned at the George Project in 2021 and may occur. Sabina is currently evaluating a summer field based and fall exploration program at the George property.



Figures 9 & 10. Airborne geophysics at George Lake Property and Aerial Image of George Camp (July 2020).

Appendix A

Back River Project

COVID-19 Operational Framework Document

Sabina Gold & Silver Corp.

COVID-19 Operational Framework – Back River Project

Version 6

Sabina has evaluated the risk of continuing activities at the Back River Project (Goose Property, George Property and Marine Laydown Area) in the context of the current COVID-19 pandemic. Sabina is confident that with proper risk mitigation and elevated health and safety practices that operations at Back River can be carried out safely. This Framework details the requirements, practices, and restrictions to be put in place for operation of the Project. As new information becomes available this document, and any associated guidelines, will be evaluated by management and may be updated as required.

Those measures flagged with an Asterix () may be relaxed or removed once all personnel have been on site for 8 consecutive days and with no positive or inconclusive onsite testing and no personnel experiencing symptoms. The Operations Manager, or designate, will oversee the decision to relax or remove requirements.*

General

- All personnel are required to meet or exceed relevant federal, territorial, provincial and municipal public health requirements for 14 days prior to arrival on site. Those who are unable to meet the requirements must provide a written request at least 5 days prior to departure stating what requirements they are unable to meet and the rational. Sabina may grant exceptions on a case by case basis. For additional information on federal, territorial, and provincial public health requirements please see:
 - <https://www.canada.ca/en/public-health/services/diseases/2019-novel-coronavirus-infection/symptoms/provincial-territorial-resources-covid-19.html>, and
 - <https://www.canada.ca/en/public-health/services/diseases/coronavirus-disease-covid-19.html>
- All personnel traveling into site are required to have COVID PCR or Antigen test completed prior entering site. Only those individuals with confirmed negative results will be permitted to access site. It is anticipated that the majority of testing will be completed utilizing Sabina's COVID testing programs in Edmonton or Yellowknife (Health Canada approved PCR or Antigen testing) the day before or day of departure to site.
- Sites are required to utilize an inbound flight schedule limiting personnel flights into camp to a few consecutive days.
- Sites are required to utilize a personnel rotation schedule of approximately 3 weeks in X 3 weeks out wherever possible. This will minimize the number rotations required in the 2021 field season and reduce potential for exposure. On occasion some personnel rotations may extend longer than 3 weeks to allow for overlap of key positions or shortened to less than 3 weeks. Various rotations are acceptable if they align with the inbound flight schedule.
- Individuals or groups of personnel (termed Guests) who are required to access site for a short period may access site outside of the inbound flight schedule, and with no testing, if they can remain isolated from the general population during their time onsite. Should access be required the Operations Manager, or designate, will oversee this access.

- Personnel are permitted to leave site during their rotation. However, they may not be able to re-enter the site until the start of the next available rotation. Should re-entry be required the Operations Manager, or designate, will oversee this process.
- Sabina recognizes the COVID pandemic has created new stresses and concerns for some individuals and the company takes the mental health and well-being of all its employees seriously. Sabina's Employee and Family Assistance Program (EFAP) remains available for employees.
- * While onsite all personnel are required to meet or exceed best-practices regarding social distancing and avoid cross contamination including maintaining a 2 meter (6 foot) spacing between individuals wherever possible and limiting common touch points. Should appropriate social distancing not be possible masks and other PPE will be required.
- * No maximum group gathering size will be established if social distancing and requirements to limit touch points can be followed.
- * Operational meetings, toolbox meetings, etc., may be staged in two or more parts to accommodate personnel numbers and proper physical distancing.
- * All personnel are required to practice enhanced hygiene practices including washing or sanitizing hands prior to entering shared facilities (office, kitchen, washrooms, etc.) and personnel must use/dispose of masks, gloves and other specialized protective equipment as directed.
- All personnel will be provided with appropriate protective equipment, hand washing stations/hand sanitizer, and guidance on reducing COVID risks.
- Sites are required to develop guidelines to ensure enhanced cleaning is in place in all work and common areas.

Travel

- All reasonable efforts are to be made to limit exposure during travel from a person's home to the sites.
- All personnel are required to use masks and follow enhanced hygiene practices, including hand washing and sanitizing, for all travel segments. Once individuals are in their assigned hotel rooms masks may be removed.
- Should last minute changes to personnel be required efforts will be made to accommodate, however, changes made less than 7 days prior to departure may not be possible due to Sabina and Government of Nunavut entry requirements.
- All personnel are required to isolate while in Yellowknife. This includes between flights as well as any overnight required.
- In line with government and community preferences no personnel will be hired from Nunavut. Sabina will frequently monitor government direction and modify this requirement as appropriate.
- All personnel are required to travel on flight combinations assigned. No modifications for personal preference will be made (i.e. preferred airlines, flight times, personal reasons, etc.).
- All travel is required to be completed using as few flight combinations as possible.
- Wherever possible personnel are to be booked on the same commercial flights and at the same hotels.
- Wherever possible overnight stays in Yellowknife should be avoided.
- Hotel rooms are not to be shared.

- All personnel are required to report directly to their assigned hotel and remain in their rooms except as necessary to obtain 'take out' food or other essentials. Wherever provided room service must be utilized.

Sites may work with contractors to meet the travel requirements or may choose to complete all requirements internally.

Monitoring & Reporting

- All personnel are required to self-monitor for COVID related symptoms and perform temperature checks each day for 14 days prior to departure from their home. Records are to be maintained and provided when requested. The Sabina COVID Task Force may permit shorter monitoring periods when late adjustments to personnel schedules are required.
- Sabina may opt to utilize an online system, accessible via mobile devices, to monitor compliance to the 14 days of monitoring.
- All personnel are required to complete and submit Sabina's health questionnaire 1 day prior to departure from their home.
- All personnel are required to complete the appropriate Government of Nunavut form 5 days prior to arrival in Nunavut. This form is to be provided to Sabina for submission to the Government of Nunavut to grant exemption from the current travel ban into Nunavut.
- All personnel are required to participate in additional tests and provide additional information on their final day of travel (to be completed in Edmonton or Yellowknife prior to boarding the charter flight to site).

Pre-Deployment Testing

- Personnel are required to have approved COVID PCR or Antigen tests completed prior to entry to site. During the period 48-72 hours before the test, and following the test, personnel are requested to isolate as much as possible except as required for travel.
- Personnel who travel to site during the set site rotation will receive testing through Sabina's COVID testing programs in Edmonton or Yellowknife (approved COVID PCR or Antigen testing) the day before or day of departure to site.
- Those personnel traveling into site off rotation are required to have COVID PCR or Antigen tests completed prior to entering site. These may be completed through Sabina's COVID testing program or through another Sabina approved testing facility.
- Only those individuals with confirmed negative results will be permitted to access site.
- Those with positive results are required to isolate in their location until cleared by the relevant Public Health system – generally this could be 10-28 days if a confirmed positive result occurs.
- Those with inconclusive results are required to isolate in their location and await further instructions which will include further testing.
- Following a positive or inconclusive test result it is the contractor's responsibility to coordinate and pay for subsequent testing, isolation requirements, and other measures as directed by Sabina or the relevant Public Health system.
- Those with a positive test must retest negative twice (either through the private testing firm, or the relevant Public Health system) before being granted future access to site.

Onsite Testing

- Onsite personnel are required to participate in Sabina's onsite COVID PCR or Antigen testing when directed by Sabina Management. Generally, this will be twice per rotation on approximately days 4 and 8 after entering site. This testing programs utilizes a nasal swab sample to be taken.
- Onsite personnel may be required to participate in Sabina's onsite COVID Antibody testing when directed by Sabina Management. This testing programs utilizes a small blood sample to be taken.
- Only those individuals with negative results will be permitted to continue to work at site.
- Any personnel who test inconclusive or positive will be isolated and next steps will be determined in consultation with Nunavut Public Health.

Vaccination

- Sabina will require all personnel entering the Project to have at least one dose of Health Canada Approved COVID vaccine as of August 1, 2021.
- Proof of vaccination must be provided to Sabina prior to August 1, 2021.
- Sabina will require all personnel entering the Project to have two doses of Health Canada Approved COVID vaccine as of September 15, 2021.
- Proof of dual vaccination must be provided to Sabina prior to September 15, 2021.
- Those who opt not to, or are unable to, be vaccinated may still be granted access to the Property on a case by case basis by a member of Sabina's executive team. Sabina will require additional protective measures for those individuals who do not meet the vaccination requirements. This may include an additional isolation period in an isolation hotel prior to undergoing testing. The isolation hotel will be determined by Sabina and will likely be Edmonton or Yellowknife.
- It is the contractor's responsibility to coordinate and pay for costs associated with any additional isolation requirements including compensation, food, and other incidentals. Travel costs will be covered by Sabina as usual.
- Those vaccinated are still required to follow all aspects of this COVID Operational Framework including the requirement for Pre-Deployment and Onsite Testing.

Camp Accommodations

- All personnel are required to have their own separate accommodation (private rooms or physically split cabins).
- Approximately 5% of available rooms are to be kept free for potential isolation needs or other uses (unanticipated guests, maintenance, etc.).
- Based on the current design of the Goose Property, George Property and Marine Laydown Area camps capacity will be capped at approximately 90, 40 and 35 personnel respectfully.
- * No personnel are permitted in anyone else's room. Should access be required the Operations Manager, or designate, will oversee this access.

Camp Auxiliary Services

- * Site washrooms, dry's, and washing facilities are to be assigned to onsite personnel. Individuals are to use only the facilities they are assigned to. The Operations Manager, or designate, will oversee the assignments.
- * The sites social locations including TV tents, indoor smoking areas, saunas, etc. will remain closed if social distancing cannot be maintained. Kitchen and office space may not be used to socialize, unless authorized by the Operations Manager, or designate.
- * Group recreational activities may be permitted if social distancing requirements can be followed. The Operations Manager, or designate, will approve any group recreational activities.
- * Sites are required to limit the use of office space and boardrooms to meet or exceed best-practices regarding social distancing.
- Where possible internet speeds are to be increased at sites to allow for individuals to communicate frequently within and outside the camp. It is recommended that personnel use their own devices for this purpose. Devices should not be shared.
- It is recommended that ample radios and charging stations be made available to limit the need to share these devices.

Camp Food Service

- * Sites are required to develop guidelines on food preparation and service to meet or exceed best-practices regarding social distancing and cross contamination via touch points.
- * Sites are required to stagger food service times to adhere to best-practices regarding social distancing and avoidance of cross contamination via touch points.
- * Sites are required to modify food service areas to adhere to best-practices regarding social distancing and avoidance of cross contamination via touch points. Self-serve areas are to be removed, unless authorized by Operations Manager, or designate.

Supplies

- * Sites will ensure that necessary PPE, testing equipment, cleaning products and other specialized equipment are available onsite, or can be made available on short notice, to meet day-to-day requirements as well as emergency medical conditions.

Worksites

- * Sites are required to develop guidelines for all worksites to limit exposure including meeting or exceeding best-practices regarding social distancing and avoidance of cross contamination wherever possible.

Helicopters

- * Sites are required to develop guidelines for the use of helicopters to limit potential exposure.

Fixed Wing

- * Sites are required to develop guidelines for the loading and unloading of planes to limit exposure.
- * Pilots who do not need to remain at the sites are not to leave the airstrip area. If a pilot must access areas outside of the airstrip the Operations Manager, or designate, will oversee their movement.

Guests (Personnel which arrive at the sites outside of the inbound flight schedule with no test completed)

- Guests may be allowed at site with approval of the Operations Manager under special circumstances.
- Guests are not permitted to use any of the common areas and must remain isolated from the general population.
- The sites are required to develop guidelines for all guests to meet or exceed best-practices regarding social distancing and avoidance of cross contamination.

Symptom Monitoring& Suspected Case Management

- Sites are required to monitor all personnel during their time onsite.
- Sites are required to develop guidelines for addressing suspected cases including medical treatment, isolation, labour disruption and transportation off site.

Discipline

- It is expected that all personnel make honest representations about their health in all personal monitoring, health questionnaires, vaccination records and company records. The safety of fellow workers depends on it.
- Those violating the requirements of this framework may be removed from site on the next available flight and may face additional disciplinary measures. The Operations Manager, or designate, will oversee discipline.