



GOOSE PROJECT

AUGUST 2020 MONTHLY REPORT FOR WATER LICENCE 2AM-BRP1831

DATE

March 18, 2026

REFERENCE

Version 1.0



GOOSE PROJECT

AUGUST 2020 MONTHLY REPORT

In compliance with:
Water Licence 2AM-BRP1831

Prepared by:
RainCoast Environmental Services Ltd.

Submitted to:
Nunavut Water Board (NWB)

B2GOLD BACK RIVER CORP.

Suite 3400, Park Place, 666 Burrard Street
Vancouver, British Columbia, Canada, V6C 2X8
Telephone: +1 604 681 8371

www.b2gold.com

EXECUTIVE SUMMARY – ENGLISH

This report presents B2Gold Back River Corp.'s (B2Gold Nunavut's) August 2020 Monthly Monitoring Report for Water Licence 2AM-BRP1831, also referred to as the Licence, issued by the Nunavut Water Board (NWB). As set out in Part I, Item 18 of the Licence, B2Gold Nunavut is required to submit to the Board, within thirty (30) days following the month being reported, a Monthly Report. This report shall include:

- ◆ All data and information required by Part I and generated by the Monitoring Program in the Tables of Schedule I of the Licence;
- ◆ An assessment of data to identify areas of non-compliance with regulated Discharge parameters referred to in Part D and Part F of the Licence; and
- ◆ Documentation of conditions during spring freshet, major rain events, and periods of sustained precipitation including flow measurements, photographs, and notes.

AULAPKAIYINI NAITTUQ – INUINNAQTUN

Una uniudjut pidjutigiyaat B2Gold Back River Corp.'s (B2Gold Nunavut's) Niqiliqivik 2020 Tatqighiutini Munaridjutikkut Uniudjutit haffumunga Imakkut Laisia 2AM-BRP1831, taiyauvaktuqlu Laisimik, tuniyauyuq hapkunanga Nunavunmi Imaliqiyit Katimayiinin (NWB).

Iliuraqtauhimajumi uvani Ilangani I, Item 18 uumani Laisimi, B2Gold Nunavut pitqujauhimajuq tuniluni Katimajiinnun, iluani thirtyni (30) ublunik talvannga tatqirhiutimi unniutidjutimi, uuminnga Tatqiqhiutimi Unniudjutimik. Una taiguagakhaq ilaliutiyukhaq:

- ◆ Tamaita naunaipkutit hivunihijutilu aturiaqaqtut Ilagiyaani I-mi hanayauhimayulu Munarinigagut Havaamit naunaipkutini Naunaipkut I-mi Laisiuyuup;
- ◆ Ihivgiugutit naunaiyautinik naunaiyagiangani humi maliktaungit maligagaqtut Iqainikkut kiklikhait titiraqhimayut uvani Ilangani D uvalu Ilangani F haffumani Laisimi; unalu
- ◆ Titiraqlugit qanuginiit upingaami mahaktiligaangat, nipalliopiaqnikkut, uvalu nipalukpalaqnikkut ilauyut kuuknikkut aktilaangit, piksat, uvalu titiraqhimayut.

RÉSUMÉ EXÉCUTIF – FRANÇAIS

Ce rapport présente le Rapport Mensuel de Suivi de B2Gold Back River Corp. (B2Gold Nunavut) de août 2020 pour le Permis de l'Eau 2AM-BRP1831 aussi appelé (le Permis) délivré par la Nunavut Water Board (NWB).

Comme indiqué dans la Partie I, Article 18 du Permis, B2Gold Nunavut a l'obligation de soumettre au Conseil dans les trente (30) jours suivant le mois concerné, un Rapport Mensuel. Ce rapport devra contenir:

- ◆ Toutes les données et informations requises par la Partie I et générées par le Programme de Suivi dans les tableaux de l'Annexe I du Permis;
- ◆ Une évaluation des données pour identifier les zones de non-conformité avec les paramètres de Décharge réglementés mentionnés dans la Partie D et la Partie F du Permis ;
et
- ◆ Une documentation des conditions pendant la crue printanière, les événements de pluie majeure, et les périodes de précipitations soutenues, y compris des mesures de débit, des photographies et des notes.

TABLE OF CONTENTS

EXECUTIVE SUMMARY – ENGLISH	I
ᑕᑕᑦ ᑕᑕᑕᑕᑕᑕ – ᑕᑕᑕᑕᑕᑕ	II
AULAPKAIYINI NAITTUQ – INUINNAQTUN	III
RÉSUMÉ EXÉCUTIF – FRANÇAIS	IV
ACRONYMS AND ABBREVIATIONS	VI
1. INTRODUCTION	1
2. REGULATORY REQUIREMENTS AND STATUS	3
2.1 PART I, Item 5	3
2.2 PART I, Item 8	3
2.3 PART I, Item 9	4
1. PART I, Item 20	5
3. SCHEDULE I REQUIREMENTS	6
3.1 MLA Fuel Berm 1, 2, 3 and 4	6
3.2 Goose Fuel Berms 1 and 2	7
3.3 BRP-42 MLA Greywater	7
3.4 BRP-54 MLA Lake 3	7

LIST OF TABLES

Table 2-1	Volumes of Water Obtained from Approved Sources this Month	4
Table 3-1	MLA Berm Discharge Compared to Effluent Quality Limits	6
Table 3-2	Goose Fuel Berm Discharge Compared to Effluent Quality Limits	7

LIST OF FIGURES

Figure 1	Goose Project Overview	2
----------	------------------------	---

LIST OF APPENDICES

Appendix A	Water Quality Analytical Results
------------	----------------------------------

ACRONYMS AND ABBREVIATIONS

B2Gold Nunavut	B2Gold Back River Corporation
the Licence	Water Licence 2AM-BRP1831
MLA	Marine Laydown Area
The Goose Mine	Refers to the mining operation being developed within the Goose Claims Group, and includes the open pits, the underground mine, and the on-site infrastructure such as the WRSAs, tailings storage facilities, power infrastructure, and process plant
The Goose Project	Encompasses the Goose Claims Group, Goose Mine, the WIR and the MLA
STP	Sewage Treatment Plant
WIR	Winter Ice Road
WRSA	Waste Rock Storage Area

1. INTRODUCTION

The Goose Mine is a gold mine located within the western Kitikmeot Region of southwestern Nunavut. It is situated approximately 400 km southwest of Cambridge Bay, 95 km southeast of the southern end of Bathurst Inlet (Kingaok), and 520 km northeast of Yellowknife, Northwest Territories, as illustrated in Figure 1. The Mine is located predominantly within the Queen Maud Gulf Watershed.

This report to the Nunavut Water Board was prepared to satisfy the requirements for a Monthly Monitoring Report for August 2020 for B2Gold Back River Corp.'s (B2Gold Nunavut's) Goose Project in accordance with Part I, Item 18 of Water Licence 2AM-BRP1831, also referred to as the Licence.

As required by Part I, Items 16 and 17, all analyses were performed in an accredited laboratory according to ISO/IEC Standard 17025 and conducted as described in the most recent edition of "*Standard Methods for the Examination of Water and Wastewater*" or by other such methods approved by an Analyst.

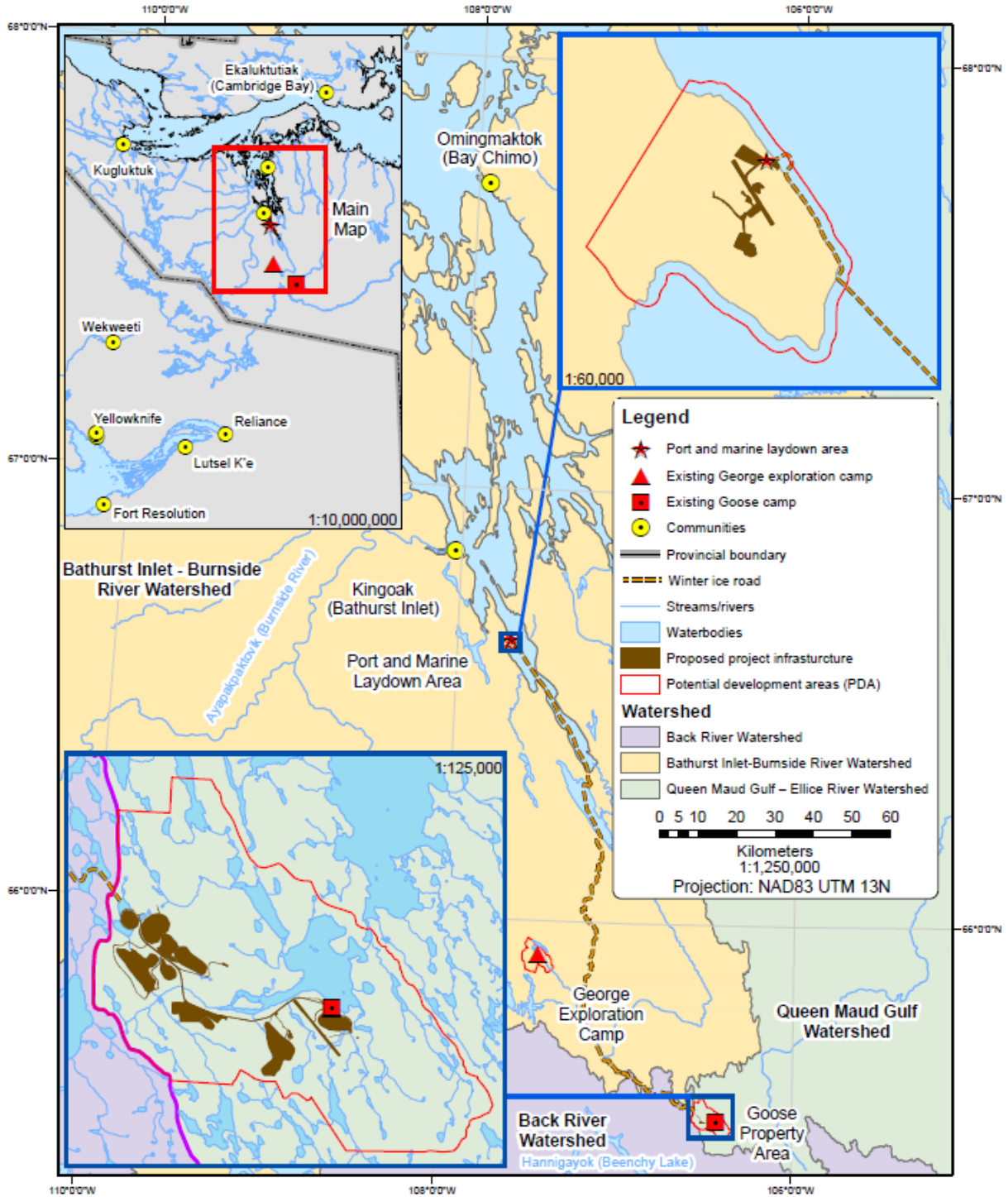


Figure 1 Goose Project Overview

2. REGULATORY REQUIREMENTS AND STATUS

2.1 PART I, Item 5

The Licensee shall, at least sixty (60) days prior to a change in Project Phase (Construction, Operations Stages), submit to the Board a written notification of the intent to change Project phase as per Part B, Item 9. Notifications may be provided separately or in accordance with the monthly monitoring report as per Part I, Item 18.

Compliance Status:

No change in Project Phase will occur over the next 60 days.

2.2 PART I, Item 8

The Licensee shall measure and record the following on a Monthly basis in cubic metres or as otherwise stated:

- a. The volume of fresh Water obtained from Big Lake;
- b. The volume of fresh Water obtained from Goose Lake;
- c. The volume of fresh Water obtained from MLA Pond S1, Pond S2, Lake 3, and Lake 4;
- d. The volume of fresh Water obtained from Llama Lake and Umwelt Lake for dewatering;
- e. The volume of fresh Water obtained from each water source for the Interconnection Winter Ice Road;
- f. The volume of Reclaim Water obtained from the Primary Water Pond, Tailings Storage Facility and/or Tailings Facility(s) for process water at the process plant;
- g. The estimated volume of greywater and sewage released to the environment and/or to the Tailings Storage Facility and Tailings Facilities;
- h. The volume of sludge removed from the STP and the location and method of disposal;
- i. The volume of effluent discharged from Landfarms, Fuel Tank Farms, and Fuel Storage Facilities; and
- j. The estimated volume of contact water, WRSA Effluent, Ore Stockpile Effluent, or other Effluent/Water streams pumped into the Primary Water Pond, Tailings Storage Facility, and/or Tailings Facilities.

Compliance Status:

The volumes of water obtained from Big Lake, Goose Lake, Marine Laydown Area (MLA) Pond S1, MLA Pond S2, MLA Lake 3, MLA Lake 4, Llama Lake, and Umwelt Lake are provided in Table 2-1 to comply with Part I, Item 8(a, b, c, d).

Table 2-1 Volumes of Water Obtained from Approved Sources this Month

Lake	Volume Used (m ³)
Big Lake	0
Goose Lake	0
MLA Pond S1	0
MLA Pond S2	0
MLA Lake 3	5
MLA Lake 4	0
Llama Lake	0
Umwelt Lake	0

The following is to comply with Part I, Item 8(f, g, h, i, and j).

No water was used for the Winter Ice Road (WIR) this month.

No reclaim water was obtained from these facilities for process water at the process plant this month. These facilities have not yet been commissioned.

The MLA was open briefly in August, approximately 5 m³ of greywater was discharged (see also Section 3). Goose Exploration Camp greywater discharge was undertaken under Water Licence 2BE-GOO2028.

The STP is not yet in operation.

Approximately 16 m³ of water was discharged from the temporary MLA fuel berms and approximately 10 m³ of water was discharged from the Goose fuel berms this month (see also Section 3).

The Primary Water Pond, Tailings Storage Facility, and Tailings Facilities have not yet been constructed.

2.3 PART I, Item 9

The Licensee shall measure and record the following on a Monthly basis in tonnes:

- Quantity of Waste placed within the Landfill(s) and Landfarm(s);
- Quantity of Waste Rock placed into, and total stored at, each Waste Storage Area and other locations approved by the Board;
- Dry tonnes of tailings placed into, and stored at, the Tailings Storage Facility and Tailings Facilities; and
- Quantity of ore stockpiled and ore processed through the processing plant.

Compliance Status:

The following is to comply with Part I, Item 9(a, b, c, and d).

No waste was deposited in the Landfill or Landfarm this month. The Landfill has not yet been constructed. No material was placed in either the Goose (BRP-51) or MLA (BRP-44) Landfarm this month; these facilities are not yet commissioned.

The Waste Rock Storage Areas have not yet been constructed. No waste rock has been generated to date.

The Tailings Storage Facility and Tailings Facilities have not yet been constructed. No tailings have been generated to date.

No ore has been mined under this Licence.

1. PART I, Item 20

No additional monitoring has been imposed by the Inspector this month.

3. SCHEDULE I REQUIREMENTS

The following is to comply with Part 1, Item 4, which requires the licensee to undertake the Monitoring Program provided in Table 1 and Table 2 of Schedule I.

A summary of monitoring activities completed this month to fulfill the requirements outlined in the Tables of Schedule I of the Licence is provided below. Non-compliances are identified where applicable. Water use and waste discharge monitoring conducted under this Licence this month are described below. Goose Claims Group water use and waste discharge was undertaken under Water Licence 2BE-GOO2028.

No site seepage or runoff with the potential to enter a freshwater waterbody was observed.

3.1 MLA Fuel Berm 1, 2, 3 and 4

Approximately 16 m³ of water was discharged from the temporary MLA fuel berms this month. Water quality met the effluent quality limits outlined in Part F, item 12 of the Licence (Table 3-1, Appendix A). All water was discharged >31 m from any waterbodies and in a manner to prevent erosion and direct connectivity with waterbodies.

Table 3-1 MLA Berm Discharge Compared to Effluent Quality Limits

Parameter	Unit	Effluent Quality Limit		MLA Fuel 1	MLA Fuel 2	MLA Fuel 3	MLA Fuel 4
		Maximum Average Concentration	Maximum Concentration of Any Grab Sample				
pH	pH units	6 - 9.5	6 - 9.5	(5.42) 6.8*	(5.78) 7.5*	(5.06) 7.1*	6.22
Total Suspended Solids	mg/L	15	30	<3.0	<3.0	<3.0	3.3
Total Oil and Grease	mg/L	5, no visible sheen	5, no visible sheen	<5.0, no visible sheen	<5.0, no visible sheen	<5.0, no visible sheen	<5.0, no visible sheen
Benzene	mg/L	0.370	0.370	<0.00050	<0.00050	<0.00050	<0.00050
Toluene	mg/L	0.002	0.002	<0.00045	<0.00050	<0.00045	<0.00045
Ethylbenzene	mg/L	0.09	0.09	<0.00050	<0.00068	<0.00050	<0.00050
Lead	mg/L	0.1	0.1	0.000059	0.000513	0.000069	<0.000050

Notes:

*Initial pH readings, in brackets, were low. In consultation with the Inspector, The pH was raised and the water re-tested for pH prior to discharge to confirm water met discharge criteria.

3.2 Goose Fuel Berms 1 and 2

Approximately 10 m³ of water was discharged from the Goose Claims Group fuel berms this month. Water quality met the effluent quality limits outlined in Part F, item 12 of the Licence (Table 3-2, Appendix A). All water was discharged >31 m from any waterbodies and in a manner to prevent erosion and direct connectivity with waterbodies.

Table 3-2 Goose Fuel Berm Discharge Compared to Effluent Quality Limits

Parameter	Unit	Effluent Quality Limit		Goose Fuel 1 – Fuel Station Berm	Goose Fuel 2 – Fuel Storage Berm
		Maximum Average Concentration	Maximum Concentration of Any Grab Sample		
pH	pH units	6 - 9.5	6 - 9.5	8.04	7.0
Total Suspended Solids	mg/L	15	30	3.7	<3.0
Total Oil and Grease	mg/L	5, no visible sheen	5, no visible sheen	<5.0, no visible sheen	<5.0, no visible sheen
Benzene	mg/L	0.370	0.370	<0.00050	<0.00050
Toluene	mg/L	0.002	0.002	<0.00045	<0.00045
Ethylbenzene	mg/L	0.09	0.09	<0.00050	<0.00050
Lead	mg/L	0.1	0.1	0.000090	0.000126

3.3 BRP-42 MLA Greywater

The volume of greywater discharged at the MLA is reported in Section 2.2. No flow or water was available for sampling downstream of the discharge point (i.e. at BRP-42), likely due to the small amount of water discharged.

3.4 BRP-54 MLA Lake 3

The volume of water withdrawn from MLA Lake 3 is reported in Section 2.2. One sample was collected at the intake point for water withdrawal. Results are provided in Appendix A.

APPENDIX A WATER QUALITY ANALYTICAL RESULTS

Table A-1 Water Quality Results for MLA Fuel Berm 1, 2, 3, and 4

Sample ID	MLA FUEL 1	MLA FUEL 2	MLA FUEL 3	MLA FUEL 4
Sampling Date and Time	19-07-2020 13:35	19-7-2020 13 :40	19-7-2020 13:45	19-7-2020 13:50
ALS ID	L2477544	L2477550	L2477553	L2477554
Aggregate Organics				
Oil & grease (gravimetric) mg/L	<5.0	<5.0	<5.0	<5.0
Physical Tests				
pH pH units	5.42	5.78	5.06	6.22
Solids, total suspended [TSS] mg/L	<3.0	<3.0	<3.0	3.3
Total Metals				
Lead, total mg/L	0.000059	0.000513	0.000069	<0.000050
Volatile Organic Compounds [Fuels]				
Benzene mg/L	<0.00050	<0.00050	<0.00050	<0.00050
Ethylbenzene mg/L	<0.00050	0.00068	<0.00050	<0.00050
Methyl-tert-butyl ether [MTBE] mg/L	<0.00050	<0.00050	<0.00050	<0.00050
Styrene mg/L	<0.00050	<0.00050	<0.00050	<0.00050
Toluene mg/L	<0.00045	0.00050	<0.00045	<0.00045
Xylene, m+p- mg/L	0.00087	0.00416	<0.00050	<0.00050
Xylene, o- mg/L	0.00065	0.00589	<0.00050	<0.00050

Table A-2 Water Quality Results for Goose Fuel Berms

Sample ID	Goose Fuel 1 – Fuel Station Berm	Goose Fuel 2 – Fuel Storage Berm
Sampling Date and Time	2020-07-02 8:00	2020-07-02 8:00
ALS ID	L2469538-1	L2469529-1
Aggregate Organics		
Oil & grease (gravimetric) mg/L	<5.0	<5.0
Physical Tests		
pH pH units	8.04	7
Solids, total suspended [TSS] mg/L	3.7	<3.0
Total Metals		
Lead, total mg/L	0.00009	0.000126
Volatile Organic Compounds [Fuels]		
Benzene mg/L	<0.00050	<0.00050
Ethylbenzene mg/L	<0.00050	<0.00050
Methyl-tert-butyl ether [MTBE] mg/L	<0.00050	<0.00050
Styrene mg/L	<0.00050	<0.00050
Toluene mg/L	<0.00045	<0.00045
Xylene, m+p- mg/L	<0.00050	<0.00050
Xylene, o- mg/L	<0.00050	<0.00050

Table A-3 Water Quality Results for MLA Lake 3

Sample ID	MLA Lake 3
Sampling Date and Time	30-08-2020 19:00
ALS ID	L2496996-1
Anions and Nutrients	
Alkalinity, bicarbonate (as CaCO3) mg/L	46.9
Alkalinity, carbonate (as CaCO3) mg/L	<1.0
Alkalinity, hydroxide (as CaCO3) mg/L	<1.0
Alkalinity, phenolphthalein (as CaCO3) mg/L	<2.0
Alkalinity, total (as CaCO3) mg/L	46.9
Ammonia, total (as N) mg/L	0.0069
Bromide mg/L	<0.05
Chloride mg/L	1.83
Fluoride mg/L	0.021
Nitrate and nitrite (as N) mg/L	<0.0051
Nitrate (as N) mg/L	<0.005
Nitrite (as N) mg/L	<0.001
Phosphate, ortho-, dissolved (as P) mg/L	<0.001
Phosphorus, total mg/L	0.0061
Sulfate (as SO4) mg/L	0.42
Anion sum (meq/L)	1
Cation sum (meq/L)	1.33
Cation - anion balance (%)	14.4
Cyanides	
Cyanide, free mg/L	<0.005
Cyanide, total mg/L	<0.005
Cyanide, weak acid dissociable mg/L	<0.005
Dissolved Metals	
Aluminum, dissolved mg/L	0.0062
Antimony, dissolved mg/L	<0.0001
Arsenic, dissolved mg/L	0.00023
Barium, dissolved mg/L	0.0165
Beryllium, dissolved mg/L	<0.00010
Bismuth, dissolved mg/L	<0.000050
Boron, dissolved mg/L	<0.010
Cadmium, dissolved mg/L	6.5E-06
Calcium, dissolved mg/L	15.2
Cesium, dissolved mg/L	<0.000010

Sample ID	MLA Lake 3
Sampling Date and Time	30-08-2020 19:00
ALS ID	L2496996-1
Chromium, dissolved mg/L	<0.0001
Cobalt, dissolved mg/L	<0.0001
Copper, dissolved mg/L	0.00085
Iron, dissolved mg/L	<0.010
Lead, dissolved mg/L	<0.000050
Lithium, dissolved mg/L	<0.0010
Magnesium, dissolved mg/L	5.93
Manganese, dissolved mg/L	<0.00010
Mercury, dissolved µg/L	<0.0000050
Molybdenum, dissolved mg/L	0.000134
Nickel, dissolved mg/L	<0.00050
Phosphorus, dissolved mg/L	<0.050
Potassium, dissolved mg/L	0.532
Rubidium, dissolved mg/L	0.00029
Selenium, dissolved mg/L	<0.000050
Silicon, dissolved mg/L	0.793
Silver, dissolved mg/L	<0.000010
Sodium, dissolved mg/L	1.75
Strontium, dissolved mg/L	0.00995
Sulfur, dissolved mg/L	<0.50
Tellurium, dissolved mg/L	<0.0002
Thallium, dissolved mg/L	<0.00001
Thorium, dissolved mg/L	<0.0001
Tin, dissolved mg/L	<0.0001
Titanium, dissolved mg/L	<0.0003
Tungsten, dissolved mg/L	<0.0001
Uranium, dissolved mg/L	0.000305
Vanadium, dissolved mg/L	<0.00050
Zinc, dissolved mg/L	0.0069
Zirconium, dissolved mg/L	<0.00020
Organic / Inorganic Carbon	
Carbon, dissolved organic [DOC] mg/L	3.99
Physical Tests	
Conductivity µS/cm	112
Hardness (as CaCO ₃), dissolved mg/L	62.2

Sample ID	MLA Lake 3
Sampling Date and Time	30-08-2020 19:00
ALS ID	L2496996-1
pH pH units	7.9
Solids, total dissolved [TDS] mg/L	80
Solids, total dissolved [TDS], calculated mg/L	53.8
Turbidity NTU	0.66
Total Metals	
Aluminum, total mg/L	0.0128
Antimony, total mg/L	<0.00010
Arsenic, total mg/L	0.00025
Barium, total mg/L	0.0156
Beryllium, total mg/L	<0.00010
Bismuth, total mg/L	<0.000050
Boron, total mg/L	<0.010
Cadmium, total mg/L	1.41E-05
Calcium, total mg/L	13.6
Cesium, total mg/L	<0.000010
Chromium, total mg/L	<0.00010
Cobalt, total mg/L	<0.00010
Copper, total mg/L	0.00094
Iron, total mg/L	0.033
Lead, total mg/L	<0.00005
Lithium, total mg/L	<0.001
Magnesium, total mg/L	5.06
Manganese, total mg/L	0.00321
Mercury, total mg/L	<0.000050
Molybdenum, total mg/L	0.00014
Nickel, total mg/L	<0.00050
Phosphorus, total mg/L	<0.050
Potassium, total mg/L	0.447
Rubidium, total mg/L	0.00024
Selenium, total mg/L	<0.000050
Silicon, total mg/L	0.081
Silver, total mg/L	<0.000010
Sodium, total mg/L	1.53
Strontium, total mg/L	0.00877
Sulfur, total mg/L	<0.50

Sample ID	MLA Lake 3
Sampling Date and Time	30-08-2020 19:00
ALS ID	L2496996-1
Tellurium, total mg/L	<0.00020
Thallium, total mg/L	<0.000010
Thorium, total mg/L	<0.00010
Tin, total mg/L	<0.00010
Titanium, total mg/L	<0.00030
Tungsten, total mg/L	<0.00010
Uranium, total mg/L	0.00026
Vanadium, total mg/L	<0.00050
Zinc, total mg/L	0.0071
Zirconium, total mg/L	<0.0002