

GOOSE PROJECT

JANUARY 2022 MONTHLY REPORT

In compliance with:
Water Licence 2AM-BRP1831 (Amended No.1)

Prepared by:
RainCoast Environmental Services Ltd.

Submitted to:
Nunavut Water Board (NWB)

B2GOLD BACK RIVER CORP.

Suite 3400, Park Place, 666 Burrard Street
Vancouver, British Columbia, Canada, V6C 2X8
Telephone: +1 604 681 8371
www.b2gold.com

EXECUTIVE SUMMARY – ENGLISH

This report presents B2Gold Back River Corp.'s (B2Gold Nunavut's) January 2022 Monthly Monitoring Report for Water Licence 2AM-BRP1831 (Amendment No.1), also referred to as the Licence, issued by the Nunavut Water Board (NWB).

As set out in Part I, Item 18 of the Licence, B2Gold Nunavut is required to submit to the Board, within thirty (30) days following the month being reported, a Monthly Report. This report shall include:

- ◆ All data and information required by Part I and generated by the Monitoring Program in the Tables of Schedule I of the Licence;
- ◆ An assessment of data to identify areas of non-compliance with regulated Discharge parameters referred to in Part D and Part F of the Licence; and
- ◆ Documentation of conditions during spring freshet, major rain events, and periods of sustained precipitation including flow measurements, photographs, and notes.

AULAPKAIYINI NAITTUQ – INUINNAQTUN

Una uniudjut pidjutigiyaat B2Gold Back River Corp.'s (B2Gold Nunavut's) Upluqtuhivia 2022 Tatqighiutini Munaridjutikkut Uniudjutit haffumunga Imakkut Laisia 2AM-BRP1831 (Ihuaqhaqtauyuq No.1), taiyauvaktuqlu Laisimik, tuniyauyuq hapkunanga Nunavunmi Imaliqiyit Katimayiinin (NWB).

Iliuraqtauhimajumi uvani Ilangani I, Item 18 uumani Laisimi, B2Gold Nunavut pitqujauhijajuq tuniluni Katimajiinnun, iluani thirtyni (30) ublunik talvannga tatqirhiutimi unniutidjutimi, uuminnga Tatqiqhiutimi Unniudjutimik. Una taiguagakhaq ilaliutiyukhaq:

- ◆ Tamaita naunaipkutit hivunihijutilu aturiaqaqtut Ilagiyaani I-mi hanayauhimayulu Munarinigagut Havaamit naunaipkutini Naunaipkut I-mi Laisiuyuup;
- ◆ Ihivgiugutit naunaiyautinik naunaiyagiangani humi maliktaungit maligagaqtut Iqainikkut kiklikhait titiraqhimayut uvani Ilangani D uvalu Ilangani F haffumani Laisimi; unalu
- ◆ Titiraqlugit qanuginiit upingaami mahaktiligaangat, nipalliopiaqnikkut, uvalu nipalukpalaqnikkut ilauyut kuuknikkut aktilaangit, piksat, uvalu titiraqhimayut.

RÉSUMÉ EXÉCUTIF – FRANÇAIS

Ce rapport présente le Rapport Mensuel de Suivi de B2Gold Back River Corp. (B2Gold Nunavut) de janvier 2022 pour le Permis de l'Eau 2AM-BRP1831 (Amendement No.1) aussi appelé (le Permis) délivré par la Nunavut Water Board (NWB).

Comme indiqué dans la Partie I, Article 18 du Permis, B2Gold Nunavut a l'obligation de soumettre au Conseil dans les trente (30) jours suivant le mois concerné, un Rapport Mensuel. Ce rapport devra contenir:

- ◆ Toutes les données et informations requises par la Partie I et générées par le Programme de Suivi dans les tableaux de l'Annexe I du Permis;
- ◆ Une évaluation des données pour identifier les zones de non-conformité avec les paramètres de Décharge réglementés mentionnés dans la Partie D et la Partie F du Permis ;
et
- ◆ Une documentation des conditions pendant la crue printanière, les événements de pluie majeure, et les périodes de précipitations soutenues, y compris des mesures de débit, des photographies et des notes.

TABLE OF CONTENTS

EXECUTIVE SUMMARY – ENGLISH	I
ᑕᐱᑦ ᑲᑲᑲᑲᑲᑲ – ᐱᑲᑲᑲᑲᑲ	II
AULAPKAIYINI NAITTUQ – INUINNAQTUN	III
RÉSUMÉ EXÉCUTIF – FRANÇAIS	IV
ACRONYMS AND ABBREVIATIONS	VI
1. INTRODUCTION	1
2. REGULATORY REQUIREMENTS AND STATUS	3
2.1 PART I, Item 5	3
2.2 PART I, Item 8	3
2.3 PART I, Item 9	4
2.4 PART I, Item 20	4
3. SCHEDULE I REQUIREMENTS	5
3.1 BRP-42 MLA Greywater	5

LIST OF FIGURES

Figure 1 Goose Project Overview	2
---------------------------------	---

ACRONYMS AND ABBREVIATIONS

B2Gold Nunavut	B2Gold Back River Corporation
the Licence	Water Licence 2AM-BRP1831 (Amendment No.1)
MLA	Marine Laydown Area
The Goose Mine	Refers to the mining operation being developed within the Goose Claims Group, and includes the open pits, the underground mine, and the on-site infrastructure such as the WRSAs, tailings storage facilities, power infrastructure, and process plant
The Goose Project	Encompasses the Goose Claims Group, Goose Mine, the WIR and the MLA
STP	Sewage Treatment Plant
WRSA	Waste Rock Storage Area

1. INTRODUCTION

The Goose Mine is a gold mine located within the western Kitikmeot Region of southwestern Nunavut. It is situated approximately 400 km southwest of Cambridge Bay, 95 km southeast of the southern end of Bathurst Inlet (Kingaok), and 520 km northeast of Yellowknife, Northwest Territories, as illustrated in Figure 1. The Mine is located predominantly within the Queen Maud Gulf Watershed.

This report to the Nunavut Water Board was prepared to satisfy the requirements for a Monthly Monitoring Report for January 2022 for B2Gold Back River Corp.'s (B2Gold Nunavut's) Goose Project in accordance with Part I, Item 18 of Water Licence 2AM-BRP1831 (Amendment No.1), also referred to as the Licence.

As required by Part I, Items 16 and 17, all analyses were performed in an accredited laboratory according to ISO/IEC Standard 17025 and conducted as described in the most recent edition of "*Standard Methods for the Examination of Water and Wastewater*" or by other such methods approved by an Analyst.

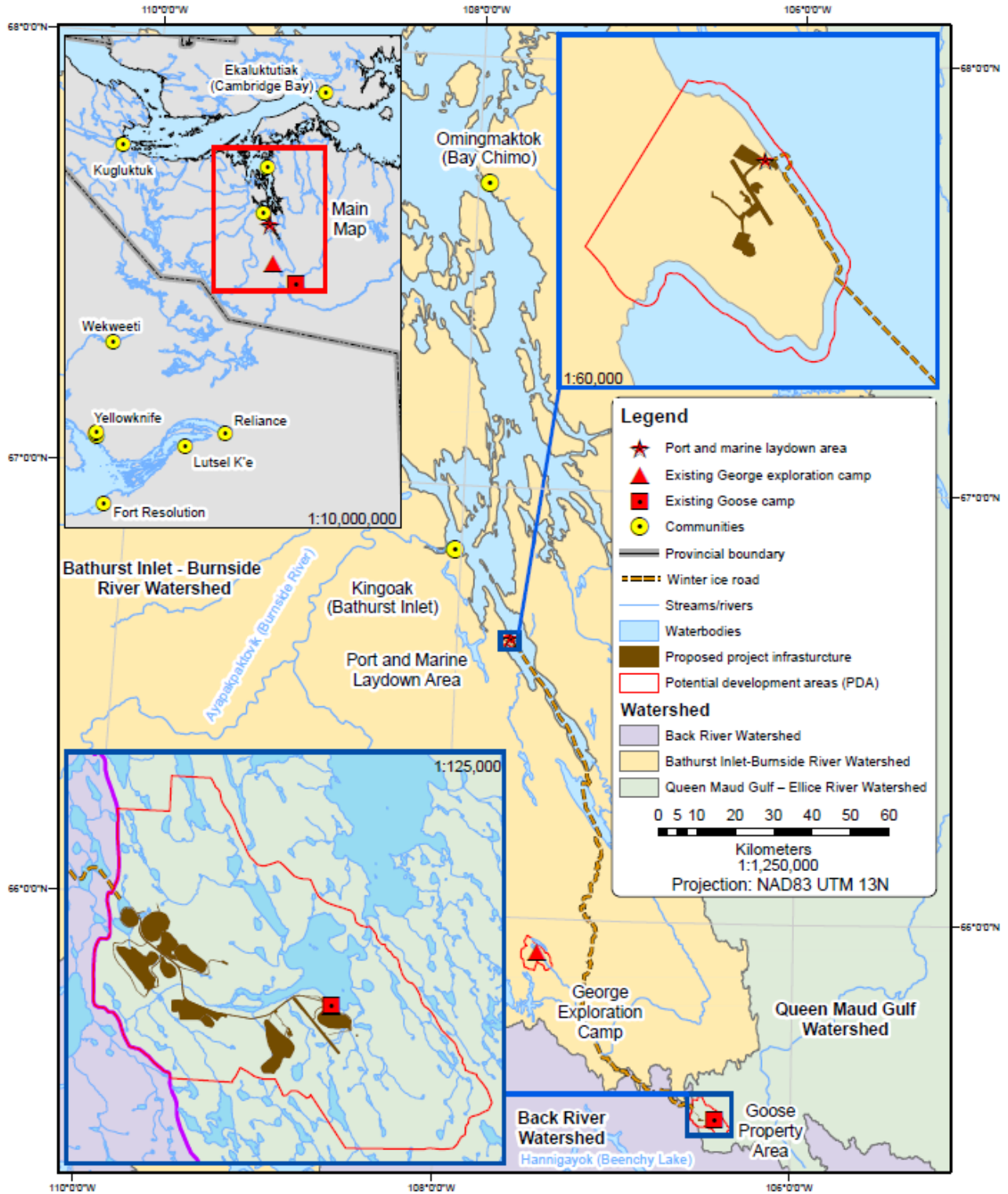


Figure 1 Goose Project Overview

2. REGULATORY REQUIREMENTS AND STATUS

2.1 PART I, Item 5

The Licensee shall, at least sixty (60) days prior to a change in Project Phase (Construction, Operations Stages), submit to the Board a written notification of the intent to change Project phase as per Part B, Item 9. Notifications may be provided separately or in accordance with the monthly monitoring report as per Part I, Item 18.

Compliance Status:

No change in Project Phase will occur over the next 60 days.

2.2 PART I, Item 8

The Licensee shall measure and record the following on a Monthly basis in cubic metres or as otherwise stated:

- a. The volume of fresh Water obtained from Big Lake;
- b. The volume of fresh Water obtained from Goose Lake;
- c. The volume of fresh Water obtained from MLA Pond S1, Pond S2, Lake 3, and Lake 4;
- d. The volume of fresh Water obtained from Llama Lake, Umwelt Lake, and other Water bodies approved by the Board for dewatering;
- e. The volume of fresh Water obtained from each Water source for the Interconnection Winter Ice Road and Winter Ice Road Service/Emergency Camps;
- f. The volume of Reclaim Water obtained from the Primary Water Pond, Tailings Storage Facility and/or Tailings Facilities for process Water at the process plant or alternative treatment system;
- g. The estimated volume of Greywater and Sewage released to the environment and/or to the Tailings Storage Facility and Tailings Facilities;
- h. The volume of sludge removed from the STP and the location and method of disposal;
- i. The volume of Effluent discharged from Landfarms, Fuel Tank Farms, and Fuel Storage Facilities;
- j. The estimated volume of Contact Water, WRSA Effluent, Ore Stockpile Effluent, or other Effluent/Water streams pumped into the Primary Water Pond, Tailings Storage Facility, Tailings Facilities, and/or transferred between ponds or facilities; and
- k. The volume of Effluent discharged at the Final Discharge Point.

Compliance Status:

The following is to comply with Part I, Item 8(a, b, c, d, e, f, g, h, i, j, and k). The MLA used seawater withdrawn from Bathurst Inlet. Goose Claims Group water use and waste discharge is reported under Water Licence 2BE-GOO2028.

No water was used for the Winter Ice Road (WIR) this month.

No reclaim water was obtained from these facilities for process water at the process plant this month. These facilities have not yet been commissioned.

Greywater was discharged to the tundra from the MLA at a rate of approximately 5.6 m³/day in 2022 (see also Section 3). Goose Claims Group greywater discharge is undertaken under Water Licence 2BE-GOO2028.

The STP is not yet in operation.

No effluent was discharged from Landfarms, Fuel Tank Farms, or Fuel Storage Facilities this month.

The Primary Water Pond, Tailings Storage Facility, and Tailings Facilities have not yet been constructed.

No effluent was discharged at the Final Discharge Point this month. Per Part F, Item 16 of the Licence, an Effluent Discharge Plan will be submitted to the Board at least 120 days prior to discharge of Effluent subject to Part F, Item 21 of the Licence.

2.3 PART I, Item 9

The Licensee shall measure and record the following on a Monthly basis in tonnes:

- a. Quantity of Waste placed within the Landfill(s) and Landfarm(s);
- b. Quantity of Waste Rock placed into, and total stored at, each Waste Storage Area and other locations approved by the Board;
- c. Dry tonnes of tailings placed into, and stored at, the Tailings Storage Facility and Tailings Facilities;
- d. Quantity of ore stockpiled and ore processed through the processing plant.

Compliance Status:

The following is to comply with Part I, Item 9(a, b, c, and d). No waste was deposited in the Landfill or Landfarm this month. The Landfill has not yet been constructed. No material was placed in either the Goose (BRP-51) or MLA (BRP-44) Landfarm this month; these facilities are not yet commissioned.

The Waste Rock Storage Areas have not yet been constructed. No waste rock has been generated to date.

The Tailings Storage Facility and Tailings Facilities have not yet been constructed. No tailings have been generated to date.

No ore has been mined under this Licence.

2.4 PART I, Item 20

No additional monitoring has been imposed by the Inspector this month.

3. SCHEDULE I REQUIREMENTS

The following is to comply with Part 1, Item 4, which requires the licensee to undertake the Monitoring Program provided in Table 1 and Table 2 of Schedule I.

A summary of monitoring activities completed this month to fulfill the requirements outlined in the Tables of Schedule I of the Licence is provided below. Non-compliances are identified where applicable.

No site seepage or runoff with the potential to enter a freshwater waterbody was observed. The MLA used seawater from Bathurst Inlet, no freshwater was used. Greywater from the MLA was discharged to the tundra. Goose Claims Group water use and waste discharge is undertaken under Water Licence 2BE-GOO2028.

3.1 BRP-42 MLA Greywater

The volume of greywater discharged at the MLA is reported in Section 2.2. No water was available for sampling at the sampling location downstream of the discharge point (BRP-42) due to freezing conditions.