



GOOSE PROJECT

FEBRUARY 2026
MONTHLY REPORT FOR
WATER LICENCE 2AM-
BRP1831

DATE
March 23, 2026

REFERENCE
Version 1.0



GOOSE PROJECT

FEBRUARY 2026 MONTHLY REPORT

In Compliance with:
Water Licence 2AM-BRP1831 (Amendment No.1)

Prepared by:
RainCoast Environmental Services Ltd.

Submitted to:
Nunavut Water Board (NWB)

B2GOLD BACK RIVER CORP.

Suite 3400, Park Place, 666 Burrard Street
Vancouver, British Columbia, Canada, V6C 2X8
Telephone: +1 604 681 8371
www.b2gold.com

EXECUTIVE SUMMARY

This report summarizes the activities and monitoring undertaken by B2Gold Back River Corp. at the Goose Project in February 2026, relevant to Part I, Item 18 of Water Licence 2AM-BRP1831 (Amendment No.1).

Water was withdrawn from Goose Lake and water bodies proximal to the Winter Ice Road (WIR). To date, cumulative water withdrawal over the WIR season has been less than available capacities defined in the 2025 WIR Technical Memorandum for all waterbodies except Lake 997, which was discussed in the January 2026 Monthly Report, and from which no further water was drawn this month. A small volume (<100 m³) of water was withdrawn from an unknown water source this month; however, based on the water withdrawal capacities presented for other lakes in the 2025 WIR Technical Memorandum this withdrawal is considered unlikely to have posed a risk to the waterbody.

The deposition of wastes included the release of treated effluent from the Goose Sewage Treatment Plant to the tundra, greywater discharge from the Marine Laydown Area (MLA) and MLA and Goose Forward camps to the tundra, the deposition of waste rock in the Umwelt Waste Rock Storage Area (WRSA), and the deposition of waste in the Umwelt WRSA landfill. Tailings slurry was placed in the Echo Tailings Facility, and water from the Echo Tailings Facility was used as reclaim water for the process plant.

AULAPKAIYINI NAITTUQ

Una uniudjut naittumik hulidjutit uvalu munagidjutit havaktauyut hapkunanga B2Gold Back River Corp. uvani Goose Havaaghaq uvani lidjirurvia 2026, ihuaqtuq haffumunga llangani I, Item 18 haffumani Imakkut Laisia 2AM-BRP1831 (Ihuaqhaqtayuuq No.1).

Imaq piiqtauyuuq Goose Tahianit ima qarviillu haniani Ukiumi Hikumi Apqut (WIR). Ublumimun, amigaiquumiyut imarmik unguvaqtirnit atuqtilugu WIR ukiungani ikitqiaq piinarialingnin aktilaangit naunaiyaqhimayut uvani 2025 WIR Ayungnaqtutigit Titiraq tamainun ima qarvingnun kihimi Tahiq 997, kitut uqautayuuq uvani Ubluqtuhivia 2026 Tatqiqhiunmi Uniudjutini, kitut imiqtaqtaungitut uvani tatqiqhiunmi. Mikiyuq aktilaanga (<100 m³) imaq unguvaqtayuuq ilihimayaungitumin imarmik uvani tatqiqhiunmi; kihimi, tunnganiqarhuni imarmik pijarnikkut angummadjutini tunijauhijun aallanun tahirun uvani 2025 WIR Ajurnaqtukkut Titiraqmi una pijarniq ihumagijaujuq qajangnarhilimaittungnarhijuq ima qarvingmun.

Tapkuat iqakut ilalgit kuviraqni halummaqtiqhimayut iqakut tapkunanga Goose Anaqtautit Atuqpiqni Havakvit talvunga nunaqmun, qingnariktuq imaq kuviraqni talvunga Tariuqmun Kuviraqvit Inaa (MLA) tamnal MLA tamnal Goose Forward hiniktaqvut nunamun, tapkuat iqakut uyaqat tapkunani Umwelt Iqakut Uyaqat Tutqumaviani Inaa (WRSA), tapkuatlu iqakut talvunga Umwelt WRSA iqakuqvut. Halumailruq kuviraq iliyauhijayuuq Echo Tailings Facility-mut, imaqlu Echo Tailings Facility-mit atuqtauyuuq utiqtiffaaqhugu imaq havauhiqmut havakvikmut.

RÉSUMÉ EXÉCUTIF

Ce rapport résume les activités et le suivi menés par B2Gold Back River Corp. lors du projet Goose en février 2026, pertinents à la partie I, point 18 de la licence d'eau 2AM-BRP1831 (Amendement no 1).

L'eau a été prélevée du lac Goose et des plans d'eau proches de la Winter Ice Road (WIR). À ce jour, le prélèvement cumulatif d'eau au cours de la saison WIR a été inférieur aux capacités disponibles définies dans le memorandum technique WIR 2025 pour tous les plans d'eau sauf le lac 997, qui a été discuté dans le rapport mensuel de janvier 2026, et dont aucune autre eau n'a été prélevée ce mois-ci. Un petit volume (<100 m³) d'eau a été prélevé d'une source d'eau inconnue ce mois-ci; cependant, selon les capacités de prélèvement d'eau présentées pour d'autres lacs dans le memorandum technique WIR de 2025, ce retrait est considéré comme peu probable comme ayant représenté un risque pour le plan d'eau.

Le dépôt des déchets comprenait le rejet d'effluents traités de l'usine d'épuration Goose vers la toundra, le rejet d'eaux grises de la zone de dépose marine (MLA) ainsi que des camps MLA et Goose Forward vers la toundra, le dépôt de roches usées dans la zone de stockage des roches usées d'Umwelt (WRSA), ainsi que le dépôt de déchets dans la décharge d'Umwelt WRSA. La boue de résidus a été placée dans l'installation de résidus Echo, et l'eau provenant de l'installation de résidus Echo a été utilisée comme eau de récupération pour l'usine de procédé.

ACRONYMS AND ABBREVIATIONS

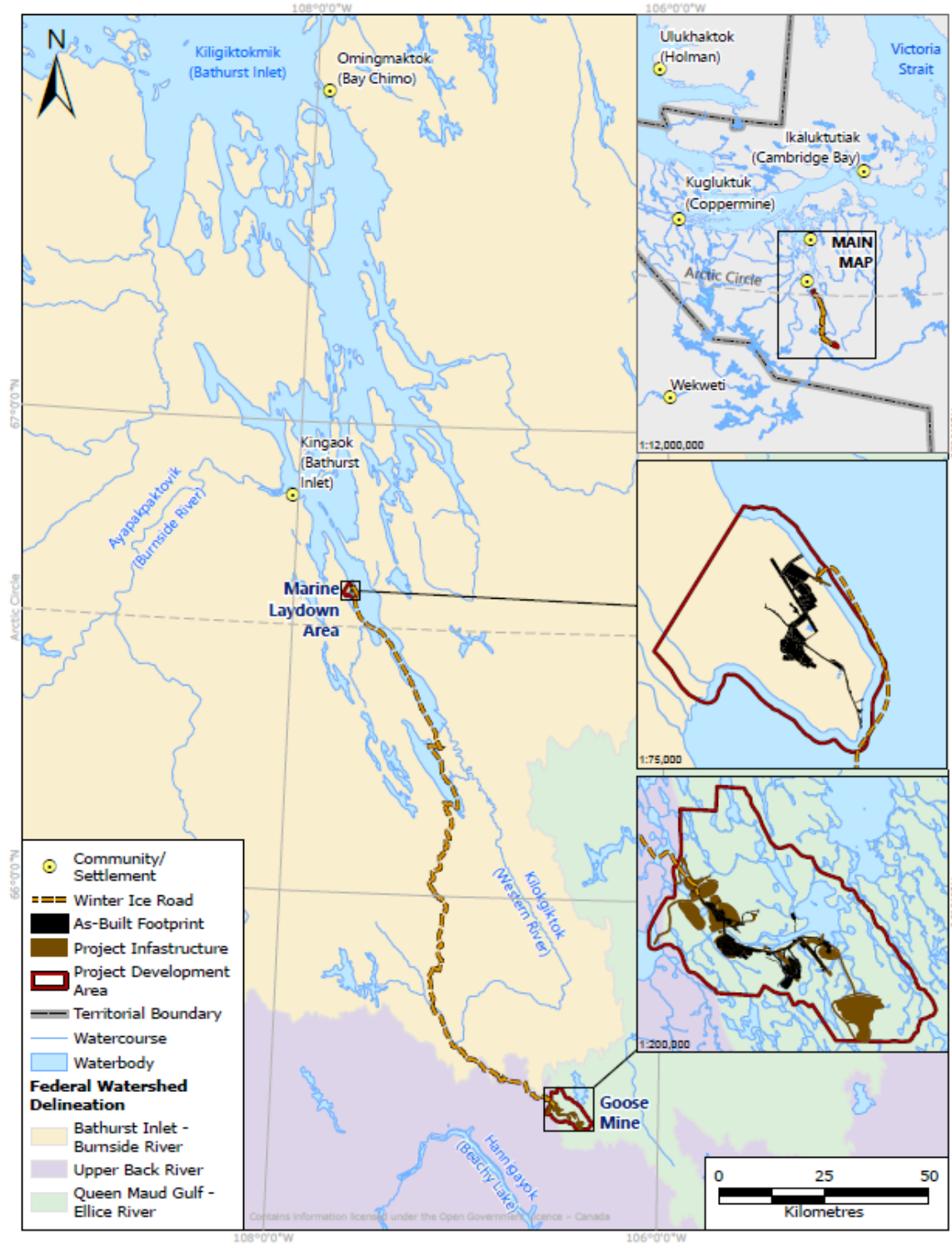
B2Gold Nunavut	B2Gold Back River Corporation
the Licence	Water Licence 2AM-BRP1831 (Amendment No.1)
MLA	Marine Laydown Area
The Goose Mine	Refers to the mining operation being developed within the Goose Claims Group, and includes the open pits, the underground mine, and the on-site infrastructure such as the WRSAs, tailings storage facilities, power infrastructure, and process plant
The Goose Project	Encompasses the Goose Claims Group, Goose Mine, the WIR and the MLA
STP	Sewage Treatment Plant
Tailings Facility	An open pit that is utilized to store tailings, waste rock, and/or acts as a water management facility (i.e., Llama, Umwelt, Echo, Goose Main)
Tailings Storage Facility	The purpose-built above ground facility designed to store tailings, waste rock and/or act as a water management facility as generally described in the Application
WIR	Winter Ice Road
WRSA	Waste Rock Storage Area

1. INTRODUCTION

The Goose Mine is a gold mine located within the western Kitikmeot Region of southwestern Nunavut. It is situated approximately 400 km southwest of Cambridge Bay, 95 km southeast of the southern end of Bathurst Inlet (Kingaok), and 520 km northeast of Yellowknife, Northwest Territories, as illustrated in Figure 1. The Mine is located predominantly within the Queen Maud Gulf Watershed.

This report to the Nunavut Water Board was prepared to satisfy the requirements for a Monthly Monitoring Report for February 2026 for B2Gold Back River Corp.'s (B2Gold Nunavut's) Goose Project in accordance with Part I, Item 18 of Water Licence 2AM-BRP1831 (Amendment No.1), also referred to as the Licence.

As required by Part I, Item 16 and 17, all analyses were performed in an accredited laboratory according to ISO/IEC Standard 17025 and conducted as described in the most recent edition of "*Standard Methods for the Examination of Water and Wastewater*" or by other such methods approved by an Analyst.



CLIENT: B2Gold Nunavut
GIS NUMBER: BAC-19-016-02

DATE: 20 March 2026

PROJECTION: NAD 1983 UTM Zone 13N
SCALE: 1:1,250,000 when printed at 8.5x11

Figure 1 Goose Project Overview

2. REGULATORY REQUIREMENTS AND STATUS

2.1 PART I, Item 5

The Licensee shall, at least sixty (60) days prior to a change in Project Phase (Construction, Operations Stages), submit to the Board a written notification of the intent to change Project phase as per Part B, Item 9. Notifications may be provided separately or in accordance with the monthly monitoring report as per Part 1, Item 18.

Compliance Status:

No change in Project phase will occur over the next 60 days.

2.2 PART I, Item 8

The Licensee shall measure and record the following on a Monthly basis in cubic metres or as otherwise stated:

- a. The volume of fresh Water obtained from Big Lake;
- b. The volume of fresh Water obtained from Goose Lake;
- c. The volume of fresh Water obtained from MLA Pond S1, Pond S2, Lake 3, and Lake 4;
- d. The volume of fresh Water obtained from Llama Lake, Umwelt Lake, and other Water bodies approved by the Board for dewatering;
- e. The volume of fresh Water obtained from each Water source for the Interconnection Winter Ice Road and Winter Ice Road Service/Emergency Camps;
- f. The volume of Reclaim Water obtained from the Primary Water Pond, Tailings Storage Facility and/or Tailings Facilities for process Water at the process plant or alternative treatment system;
- g. The estimated volume of Greywater and Sewage released to the environment and/or to the Tailings Storage Facility and Tailings Facilities;
- h. The volume of sludge removed from the STP and the location and method of disposal;
- i. The volume of Effluent discharged from Landfarms, Fuel Tank Farms, and Fuel Storage Facilities;
- j. The estimated volume of Contact Water, WRSA Effluent, Ore Stockpile Effluent, or other Effluent/Water streams pumped into the Primary Water Pond, Tailings Storage Facility, Tailings Facilities, and/or transferred between ponds or facilities; and
- k. The volume of Effluent discharged at the Final Discharge Point.

Compliance Status:

The following is to comply with Part I, Item 8(a, b, c, d, e, f, g, h, i, j, and k).

The volumes of water obtained from Big Lake, Goose Lake, MLA Pond S1, MLA Pond S2, MLA Lake 3, MLA Lake 4, Llama Lake, Umwelt lake, and other water bodies approved for dewatering are provided in Table

2-1. The MLA Camp used seawater withdrawn from Bathurst Inlet. Goose exploration water use was undertaken under Water Licence 2BE-GOO2028.

Table 2-1 Volumes of Water Obtained from Approved Sources

Source	Volume Used (m ³)
Big Lake	0
Goose Lake	34,407
MLA Pond S1	0
MLA Pond S2	0
MLA Lake 3	0
MLA Lake 4	0
Llama Lake	0
Umwelt Lake	0
Other water bodies approved for dewatering	0

The volume of water obtained from each Winter Ice Road (WIR) water source this month is provided in Table 2-2. A total of 49,328 m³ of freshwater was used this month. Cumulative water withdrawal over the WIR season to date was less than available capacities defined in the 2025 WIR Technical Memorandum for all waterbodies except Lake 997, which was discussed in the January 2026 Monthly Report for Water Licence 2AM-BRP1831, and from which no further water was drawn this month. Approximately 98 m³, or <0.1%, of water withdrawn over the 2025/2026 WIR season to date, was withdrawn from an unknown water source this month. The 2025/2026 WIR Technical Memo presented the calculated volume of water that could be withdrawn from 55 area lakes, while maintaining nil risk of habitat loss; this volume ranged from 683 to 32,516,148 m³, depending on the size of the water source. Based on this information, it is unlikely that this limited withdrawal amount would have posed a risk to the unknown water source.

Table 2-2 Volumes of Water Obtained from Winter Ice Road Water Sources

Source	Volume Used this Month (m ³)	Cumulative Volume Used this WIR Season (m ³)	Available Capacity (m ³)
Lake 1-0	0	3,562	39,603
Lake 2-0	0	3,549	53,507
Lake 3-0	0	6,195	79,375
Lake 4-0	0	1,687	19,379
Lake 6-0	0	1,317	25,362
Lake 7-0	0	2,368	424,972
Lake 9-0	2,021	8,603	53,703
Lake 11-0	1,350	6,977	98,188
Lake 13-0a	1,695	5,819	15,112

Source	Volume Used this Month (m ³)	Cumulative Volume Used this WIR Season (m ³)	Available Capacity (m ³)
Lake 14-0a	2,031	3,221	359,780
Lake 14-1	4,494	4,494	88,191
Lake 15-0	4,760	4,760	237,327
Lake 16-0	4,648	4,648	447,685
Lake 17-0	1,036	1,036	1,239,167
Lake 18-0	1,316	1,316	128,478
Lake 18-1	98	98	15,059
Lake 984	1,666	1,666	7,174
Lake 19-0	4,039	4,039	9,827
Lake 20-0	4,529	4,529	1,060,454
Lake 23-0	2,702	2,702	39,637
Lake 24-0	2,282	2,282	59,995
Lake 994	623	1,120	6,103
Lake 25-0	3,080	10,542	80,746
Lake 26-0	42	5,152	6,992
Lake 997	0	2,688	1,512
Lake 28-0	308	3,794	23,951
Lake 29-0	168	5,439	211,044
Lake 30-0	1,988	10,227	56,674
Lake 31-0	4,354	15,099	17,010,361
Unknown source	98	98	N/A
Total Freshwater Use	49,328	129,027	

Notes:

Available capacities are based on 2025 WIR Technical Memorandum available on the NWB registry. Volumes include water supplied to the MLA Forward Camp.

Approximately 67,093 m³ of reclaim water was obtained from the Echo Tailings Facility for process water at the process plant this month.

Approximately 4,082 m³ of treated effluent was released from the Goose Sewage Treatment Plant (STP) to the tundra this month. Estimated volumes of greywater released this month are presented in Table 2-3.

Approximately 29 m³ of compressed, dewatered sludge was removed from the Goose STP and placed in the Umwelt Waste Rock Storage Area (WRSA) landfill this month.

No effluent was discharged from landfarms, fuel tank farms or fuel storage facilities this month.

Table 2-3 Estimated Volumes of Greywater Released this Month

Locations	Volume (m ³)	Destination
MLA	1,007	Tundra
MLA Forward Camp	161	Tundra
Goose Forward Camp	4.8	Tundra

Note:

Greywater for the MLA and Goose Forward Camp are estimated based on an assumed usage of 200 litres per person per day. Greywater for the MLA Forward Camp is estimated as 100% of freshwater supplied.

Approximately 50,382 m³ of tailings slurry was placed in the Echo Tailings Facility this month. This volume is based on the surveyed water level in the pit and thus includes any precipitation accumulation (rain or snow) that occurred this month. No other contact water, WRSA effluent, ore stockpile effluent, or other effluent/water streams were pumped into the Primary Pond, Tailings Storage Facility, other Tailings Facilities, and/or transferred between ponds or facilities this month.

No effluent was discharged at the Final Discharge Point (BRP-58a to BRP-58xx (TBD)) this month. Per Part F, Item 16 of the Licence, an Effluent Discharge Plan will be submitted to the Board at least 120 days prior to discharge of Effluent subject to Part F, Item 21 of the Licence.

2.3 PART I, Item 9

The Licensee shall measure and record the following on a Monthly basis in tonnes:

- a. Quantity of Waste placed within the Landfill(s) and Landfarm(s);
- b. Quantity of Waste Rock placed into, and total stored at, each Waste Storage Area and other locations approved by the Board;
- c. Dry tonnes of tailings placed into, and stored at, the Tailings Storage Facility and Tailings Facilities;
- d. Quantity of ore stockpiled and ore processed through the processing plant.

Compliance Status:

Approximately 348 m³ of waste was placed in the Umwelt WRSA landfill this month. No material was placed in either the Goose (BRP-51) or MLA (BRP-44) landfarm this month; these facilities are not yet commissioned.

The quantity of waste rock placed and stored at each WRSA and other locations approved by the Board are presented in Table 2-4.

Approximately 68,698 m³ of dry tonnes of tailings was placed in the Echo Tailings Facility this month.

A total of 393,806 tonnes of ore was stockpiled and 68,698 tonnes of ore was processed through the process plant this month.

Table 2-4 Quantity of Waste Rock Placed and Stored

Location	Volume this Month (tonnes)	Cumulative Volume (tonnes)
Echo WRSA	0	4,749,968
Umwelt WRSA	516,718	4,816,190

2.4 PART I, Item 20

No additional monitoring was imposed by the Inspector this month.

3. SCHEDULE I REQUIREMENTS

The following is to comply with Part I, Item 4, which requires the Licensee to undertake the Monitoring Program provided in Table 1 and Table 2 of Schedule I.

Table A-1 of Appendix A provides an overview of the monitoring stations, descriptions, and monitoring frequencies outlined in the Table 1 and 2 of Schedule I of the Licence, along with a summary of monitoring activities completed this month. Additional details relevant to this month's monitoring are provided in the following sections.

3.1 BRP-17 Goose Property Sewage Treatment Plant

The Goose Property STP discharges treated effluent to land in a manner to allow further over land treatment of the effluent prior to entering the freshwater receiving environment. The volume of treated sewage effluent discharged this month is provided in Section 2.2. Water was not available for sampling because of frozen conditions.

3.2 BRP-24 Goose Lake Intake

Flow at the Goose Lake Intake point for potable and industrial water withdrawal is continuously metered. The total monthly volume withdrawn from Goose Lake under this Licence is reported in Section 2.2.

3.3 BRP-40 and 41 MLA Bathurst Inlet Desalination Intake and Discharge

One sample was collected from each of BRP-40 and BRP-41 this month and results are provided in Appendix B, Table B-1. Desalination water sampling results are analyzed and discussed in the Marine Monitoring Report included in B2Gold Nunavut's Annual Reports to the Nunavut Impact Review Board.

3.4 BRP-42 MLA Greywater

The volume of greywater discharged to the tundra from the MLA Camp is reported in Section 2.2. No flow or water was available for sampling downstream of the discharge point (i.e., at BRP-42) due to frozen conditions.

3.5 BRP-I Interconnection WIR Proximal Water Bodies

The volume of fresh water used in the construction of the WIR and at the WIR Service/Emergency Camps this month is provided in Section 2.2.

APPENDIX A MONITORING ACTIVITY OVERVIEW BY STATION

Table A-1 Monitoring Activity Overview by Station for this Month

Monitoring Program Station	Monitoring Type	Description	Mine Phase	Group Code*	Frequency	Monitoring Activity
BRP-G-01 to BRP-G-TBD	Regulated Monitoring	General Site Runoff Surficial runoff anywhere at both Goose Property and MLA, including quarries; monitoring for erosion and sedimentation.	Construction	C	Weekly if flow enters a waterbody	N/A – no runoff observed this month (frozen conditions)
BRP-S-01 to BRP-S-TBD	General Monitoring	General Seeps Seepage or runoff from excavated and/or stockpiled material anywhere at both Goose Property and MLA, including quarries, that does not gather into a collection system or the site is reclaimed.	Construction and Operations	A, D	Monthly during flow, or as found	N/A – no seepage observed this month (frozen conditions)
BRP-01	Regulated Monitoring	Goose Lake Discharge (discharge point for release of dewatering effluent with or without treatment)	Construction	A, B, G	Weekly during dewatering	N/A – no dewatering this month
				D	Four times during dewatering, at the same time as the weekly samples	
				H	Once per month during dewatering, at the same time as Group D	
				I	One time during dewatering, at the same time as Group D	

Monitoring Program Station	Monitoring Type	Description	Mine Phase	Group Code*	Frequency	Monitoring Activity
BRP-02	General Monitoring	Llama Lake (intake point for dewatering, triggers need for treatment prior to discharge at BRP-01)	Construction	C (TSS only)	Weekly if treatment is required; no sample if treatment is not required	N/A – no dewatering this month
BRP-03	Verification Monitoring	Llama Pit (representative of collected pit water prior to transfer to tailings management facility)	Operations Stage 1 to Operations Stage 2	A, G	At Licensee's discretion	N/A – facility not commissioned
BRP-04	General Monitoring	Llama Pit Lake (representative of flooded pit during flooding and before overflow to the downstream environment)	Closure* to Post-Closure	A, D	Twice per year	N/A – mine phase
BRP-05	Verification Monitoring	Llama WRSA Pond (representative of collected water quality)	Operations Stage 1 to Closure	A, G	At Licensee's discretion	N/A – facility not commissioned
BRP-06	General Monitoring	Umwelt Lake (intake point for dewatering, triggers need for treatment prior to discharge at BRP-01)	Construction	C (TSS only)	Weekly if treatment is required; no sample if treatment is not required	N/A – no dewatering this month
BRP-07	Verification Monitoring	Umwelt Pit (representative of collected pit water prior to transfer to tailings management facility)	Construction to Operations Stage 2	A, G	At Licensee's discretion	N/A – pit construction was initiated in early 2025; no transfer this month
BRP-08	General Monitoring	Umwelt Pit Lake (representative of flooded pit during flooding and before overflow to the downstream environment)	Closure to Post-Closure	A, D	Twice per year	N/A – mine phase

Monitoring Program Station	Monitoring Type	Description	Mine Phase	Group Code*	Frequency	Monitoring Activity
BRP-09	Verification Monitoring	Umwelt WRSA Pond (representative of collected water quality, including landfill seepage/runoff)	Construction to Closure (early)*	A, G	At Licensee's discretion	N/A – facility not commissioned
BRP-10	Verification Monitoring	Primary Water Pond (representative of collected water quality)	Construction to Closure (early)	A, D	At Licensee's discretion	Facility commissioned in July 2025; no samples collected this month
BRP-11	Verification Monitoring	Saline Water Pond (representative of stored water quality)	Construction (late) to Closure (early)	A, D	At Licensee's discretion	N/A – facility not commissioned
BRP-12	General Monitoring	Big Lake Intake (intake point for potable and industrial water withdrawal)	Construction to Closure	A, D	Four times per year	N/A – facility not commissioned
				B	Weekly	
BRP-13	Verification Monitoring	Ore Stockpile Pond (representative of collected water quality)	Construction to Closure (early)	A, D	At Licensee's discretion	N/A – no sample collected this month due to frozen conditions
BRP-14	Verification Monitoring	ANFO Plant (representative of collected water quality)	Construction to Closure	A, E	At Licensee's discretion	N/A – facility not commissioned
BRP-15	Regulated Monitoring	Goose Fuel Tank Farm (representative of collected water quality)	Construction to Closure	A, E	Prior to discharge or transfer of water	N/A – no discharge this month
BRP-16	Regulated Monitoring	Goose Hazardous Waste Management Area (representative of collected water quality)	Construction to Closure	A, E	Prior to discharge or transfer of water	N/A – facility not commissioned
BRP-17	Regulated Monitoring	Goose Property Sewage Treatment Plant (treated sewage discharge/drainage immediately)	Construction to Closure	A, F	Monthly	Active. See Section 3

Monitoring Program Station	Monitoring Type	Description	Mine Phase	Group Code*	Frequency	Monitoring Activity
		prior to the point of entry into freshwater)				
BRP-17A	Regulated Monitoring	Goose Property Sewage Treatment Plant (discharge point for treated sewage into Tailings Storage Facility or Tailing Facility)	Construction to Closure*	A, F	Prior to discharge	N/A – no STP discharge to the TSF or TF
BRP-18	General Monitoring	Llama Watershed Outflow (representative of non-contact water, PN04 from Water and Load Balance)	Operations Stage 1 to Closure	A, D	Once during freshet and monthly during upstream construction while visible flow is present at the stations	N/A – no samples collected this month due to frozen conditions
BRP-19	General Monitoring	Echo Outflow (representative of non-contact water). PN09 from water and load balance	Operations Stage 1 to Closure	A, D	Once during freshet and monthly during upstream construction while visible flow is present at the stations	N/A – no samples collected this month due to frozen conditions
BRP-20	Verification Monitoring	Echo Pit (representative of collected pit water prior to transfer to tailings management facility)	Operations Stage 2	A, G	At Licensee's discretion	N/A – mine phase
BRP-21	General Monitoring	Echo Pit Lake (representative of flooded pit during flooding and before overflow to the downstream environment)	Closure to Post-Closure	A, D	Twice per year	N/A – mine phase

Monitoring Program Station	Monitoring Type	Description	Mine Phase	Group Code*	Frequency	Monitoring Activity
BRP-22	Verification Monitoring	Echo WRSA Pond (representative of collected water quality)	Operations Stage 2 to Closure (early)	A, G	At Licensee's discretion	N/A – mine phase
BRP-23	General Monitoring	Gander Pond Outflow (representative of non-contact water, PN07 from Water and Load Balance)	Operations Stage 1 to Closure	A, D	Once during freshet and monthly during upstream construction while visible flow is present at the stations	N/A – no samples collected this month due to frozen conditions
BRP-24	General Monitoring	Goose Lake Intake (intake point for potable and industrial water withdrawal)	Operations Stage 1 to Closure (early)	B	Weekly	Active. See Section 3
BRP-25	Verification Monitoring	Goose Pit (representative of collected pit water prior to transfer to tailings management facility)	Operations Stage 1 to Operations Stage 2	A, G	At Licensee's discretion	N/A – facility not commissioned
BRP-26	General Monitoring	Goose Pit Lake (representative of flooded pit during flooding and before overflow to the downstream environment)	Closure* to Post-Closure	A, D	Twice per year	N/A – mine phase
BRP-27	Verification Monitoring	Goose Main Tailings Facility (intake point for water treatment, represents pre- treatment water quality)	Operations Stage 3 to Closure	A, G	At Licensee's discretion	N/A – mine phase
BRP-28	Verification Monitoring	Goose Main Tailings Facility (discharge point for water treatment, represents post-treatment water quality)	Operations Stage 3 to Closure	A, G	At Licensee's discretion	N/A – mine phase

Monitoring Program Station	Monitoring Type	Description	Mine Phase	Group Code*	Frequency	Monitoring Activity
BRP-29	Verification Monitoring	TSF WRSA Pond (representative of collected water quality, including landfill seepage/runoff)	Operations Stage 1 to Closure	A, G	At Licensee's discretion	N/A – facility not commissioned
BRP-30	General Monitoring	Goose Southeast Inflow (representative of non-contact water, PN06 from Water and Load Balance)	Operations Stage 1 to Closure	A, D	Once during freshet	N/A – not freshet
BRP-40	General Monitoring	Bathurst Inlet Intake (intake point in marine environment for potable and industrial water withdrawal)	Construction to Closure	A, D, B	At Licensee's discretion	Active. See Section 3 and Appendix B
BRP-41	General Monitoring	Bathurst Inlet Discharge (discharge point in marine environment for effluent from desalinization plant)	Construction to Closure	A, J	At Licensee's discretion	Active. See Section 3 and Appendix B
BRP-42	Regulated Monitoring	MLA Greywater (representative drainage at point of entry to the marine receiving environment)	Construction to Closure	A, F	Prior to discharge or transfer of water	Active. See Section 3
BRP-43	Regulated Monitoring	MLA Fuel Tank Farm (representative of collected water quality)	Construction to Closure	A, E	Prior to discharge or transfer of water	N/A – no discharge this month
BRP-44	Regulated Monitoring	MLA Landfarm (representative of collected water quality)	Construction to Closure	A, E	Prior to discharge or transfer of water	N/A – facility not commissioned
BRP-45	Regulated Monitoring	MLA Hazardous Waste Management Area (representative of collected water quality)	Construction to Closure	A, E	Prior to discharge or transfer of water	N/A – facility not commissioned
BRP-49	Regulated Monitoring	MLA Temporary Fuel Storage Facility (representative of collected water quality)	Construction	A, E	Prior to discharge or transfer of water	N/A – no discharge this month

Monitoring Program Station	Monitoring Type	Description	Mine Phase	Group Code*	Frequency	Monitoring Activity
BRP-51	Regulated Monitoring	Goose Landfarm (representative of collected water quality)	Construction to Closure	A, E	Prior to discharge or transfer of water	N/A – facility not commissioned
BRP-52	General Monitoring	MLA Pond S1 (intake point for potable and industrial water withdrawal)	Construction to Closure	A, D	Once per quarter when in use	N/A – no water was withdrawn this month
				B	Weekly when in use	
BRP-53	General Monitoring	MLA Pond S2 (intake point for potable and industrial water withdrawal)	Construction to Closure	A, D	Once per quarter when in use	N/A – no water was withdrawn this month
				B	Weekly when in use	
BRP-54	General Monitoring	MLA Lake 3 (intake point for potable and industrial water withdrawal)	Construction to Closure	A, D	Once per quarter when in use	N/A – no water was withdrawn this month
				B	Weekly when in use	
BRP-55	General Monitoring	MLA Lake 4 (intake point for potable and industrial water withdrawal)	Construction to Closure	A, D	Once per quarter when in use	N/A – no water was withdrawn this month
				B	Weekly when in use	
BRP-56	General Monitoring	Llama Tailings Facility (collected at "inlet" to treatment facility Pre-treatment quality)	Operations to Closure	A, G	At Licensee's discretion	N/A – facility not commissioned
BRP-57	General Monitoring	Llama Tailings Facility (after treatment; collected at "outlet" of treatment facility; no discharge to the receiving environment Post-treatment quality to confirm treatment efficiency)	Operations to Closure	A, G	At Licensee's discretion	N/A – facility not commissioned
BRP-58a to BRP-58xx (TBD)	Regulated Monitoring	Final Discharge Point Goose Lake			As per Part F, Item 16	N/A – no discharge this month

Monitoring Program Station	Monitoring Type	Description	Mine Phase	Group Code*	Frequency	Monitoring Activity
BRP-I-01 to BRP-I-TBD	General Monitoring	Interconnection Winter Ice Road Proximal Water Bodies (intake points for fresh water used in the construction of the Interconnection Winter Ice Road and WIR Service/Emergency Camps)	Construction to Closure	B	Weekly when in use	Active. See Section 3

Note:

* Refers to Group Code from Water Licence 2AM-BRP1831 Schedule I Table 1.

APPENDIX B WATER QUALITY ANALYTICAL RESULTS

Table B-1 Water Quality Data for BRP-40 and BRP-41, February 2026

Station	Unit	Lowest Detection Limit	BRP-40 Bathurst Inlet Intake (MLA)	BRP-41 Bathurst Inlet Discharge (MLA)
Date Time Lab Job Number Parameter			2026-02-10 07:15:00 C608039	2026-02-10 07:30:00 C608039
Aluminum (Al)-Dissolved	mg/L	0.15	<0.15	<0.15
Antimony (Sb)-Dissolved	mg/L	0.025	<0.025	<0.025
Arsenic (As)-Dissolved	mg/L	0.005	<0.005	<0.005
Barium (Ba)-Dissolved	mg/L	0.05	<0.05	<0.05
Beryllium (Be)-Dissolved	mg/L	0.005	<0.005	<0.005
Bismuth (Bi)-Dissolved	mg/L	0.05	<0.05	<0.05
Boron (B)-Dissolved	mg/L	2.5	3.4	3.9
Cadmium (Cd)-Dissolved	mg/L	0.0005	<0.0005	<0.0005
Calcium (Ca)-Dissolved	mg/L	2.5	289.0	343.0
Chromium (Cr)-Dissolved	mg/L	0.05	<0.05	<0.05
Cobalt (Co)-Dissolved	mg/L	0.01	<0.01	<0.01
Copper (Cu)-Dissolved	mg/L	0.01	<0.01	<0.01
Iron (Fe)-Dissolved	mg/L	0.25	<0.25	<0.25
Lead (Pb)-Dissolved	mg/L	0.01	<0.01	<0.01
Lithium (Li)-Dissolved	mg/L	0.1	0.1	0.2
Magnesium (Mg)-Dissolved	mg/L	2.5	931.0	1100.0
Manganese (Mn)-Dissolved	mg/L	0.05	<0.05	<0.05
Mercury (Hg)-Dissolved	mg/L	0.0000019	<0.0000019	-
Molybdenum (Mo)-Dissolved	mg/L	0.05	<0.05	<0.05
Nickel (Ni)-Dissolved	mg/L	0.05	<0.05	<0.05
Nitrate (NO3)-Dissolved	mg/L	0.066	0.500	0.52
Nitrite (NO2)-Dissolved	mg/L	0.0033	0.0220	0.0230
Potassium (K)-Dissolved	mg/L	2.5	274.0	326.0
Selenium (Se)-Dissolved	mg/L	0.005	<0.005	<0.005
Silicon (Si)-Dissolved	mg/L	5	<5	<5
Silver (Ag)-Dissolved	mg/L	0.001	<0.001	<0.001
Sodium (Na)-Dissolved	mg/L	2.5	7580.0	8890.0
Strontium (Sr)-Dissolved	mg/L	0.05	5.71	6.66
Sulphur (S)-Dissolved	mg/L	150	710	835
Thallium (Tl)-Dissolved	mg/L	0.0005	<0.0005	<0.0005
Tin (Sn)-Dissolved	mg/L	0.25	<0.25	<0.25

Station	Unit	Lowest Detection Limit	BRP-40 Bathurst Inlet Intake (MLA)	BRP-41 Bathurst Inlet Discharge (MLA)
Date Time Lab Job Number Parameter			2026-02-10 07:15:00 C608039	2026-02-10 07:30:00 C608039
Titanium (Ti)-Dissolved	mg/L	0.25	<0.25	<0.25
Uranium (U)-Dissolved	mg/L	0.005	<0.005	<0.005
Vanadium (V)-Dissolved	mg/L	0.25	<0.25	<0.25
Zinc (Zn)-Dissolved	mg/L	0.25	<0.25	<0.25
Zirconium (Zr)-Dissolved	mg/L	0.005	<0.005	<0.005
1,1,1,2-tetrachloroethane	mg/L	0.001	<0.001	<0.001
1,1,1-trichloroethane	mg/L	0.0005	<0.0005	<0.0005
1,1,2,2-tetrachloroethane	mg/L	0.002	<0.002	<0.002
1,1,2-trichloroethane	mg/L	0.0005	<0.0005	<0.0005
1,1-dichloroethane	mg/L	0.0005	<0.0005	<0.0005
1,1-dichloroethene	mg/L	0.0005	<0.0005	<0.0005
1,2,3-trichlorobenzene	mg/L	0.001	<0.001	<0.001
1,2,4-trichlorobenzene	mg/L	0.001	<0.001	<0.001
1,2,4-trimethylbenzene	mg/L	0.0005	<0.0005	<0.0005
1,2-dibromoethane	mg/L	0.0002	<0.0002	<0.0002
1,2-dichlorobenzene	mg/L	0.0005	<0.0005	<0.0005
1,2-dichloroethane	mg/L	0.0005	<0.0005	<0.0005
1,2-dichloropropane	mg/L	0.0005	<0.0005	<0.0005
1,3,5-trichlorobenzene	mg/L	0.0005	<0.0005	<0.0005
1,3,5-trimethylbenzene	mg/L	0.0005	<0.0005	<0.0005
1,3-dichlorobenzene	mg/L	0.0005	<0.0005	<0.0005
1,4-dichlorobenzene	mg/L	0.0005	<0.0005	<0.0005
Alkalinity (PP as CaCO3)	mg/L	1	<1	<1
Alkalinity (Total as CaCO3)	mg/L	1	110	120
Ammonia (N)-Total	mg/L	0.005	0.080	0.250
Bicarbonate (HCO3)	mg/L	1	130	150
Bromodichloromethane	mg/L	0.0005	<0.0005	<0.0005
Bromoform	mg/L	0.0005	<0.0005	0.0028
Bromomethane	mg/L	0.002	<0.002	<0.002
Carbon tetrachloride	mg/L	0.0005	<0.0005	<0.0005
Carbonate (CO3)	mg/L	1	<1	<1
Chloride (Cl)-Dissolved	mg/L	100	13000	15000

Station	Unit	Lowest Detection Limit	BRP-40 Bathurst Inlet Intake (MLA)	BRP-41 Bathurst Inlet Discharge (MLA)
Date Time Lab Job Number Parameter			2026-02-10 07:15:00 C608039	2026-02-10 07:30:00 C608039
Chlorobenzene	mg/L	0.0005	<0.0005	<0.0005
Chloroethane	mg/L	0.001	<0.001	<0.001
Chloroform	mg/L	0.0005	<0.0005	<0.0005
Chloromethane	mg/L	0.002	<0.002	<0.002
Conductivity	µS/cm	2	39000	45000
Dibromochloromethane	mg/L	0.001	<0.001	<0.001
Dichloromethane	mg/L	0.002	<0.002	<0.002
F1 (C6-C10)	mg/L	0.1	<0.1	<0.1
F1 (C6-C10) - BTEX	mg/L	0.1	<0.1	<0.1
Field Temperature	deg. C	-	0	1.1
Fluoride (F)	mg/L	0.01	0.69	0.77
Hardness (CaCO3)-Dissolved	mg/L	0.5	4560.0	5370.0
Hardness (CaCO3)-Total	mg/L	0.5	4590.0	5430.0
Hydroxide (OH)	mg/L	1	<1	<1
Methyl methacrylate	mg/L	0.0005	<0.0005	<0.0005
Methyl-tert-butyl ether (MTBE)	mg/L	0.0005	<0.0005	<0.0005
Nitrate (as N)	mg/L	0.015	0.110	0.12
Nitrate plus Nitrite (N)	mg/L	0.015	0.120	0.12
Nitrite (as N)	mg/L	0.001	0.007	0.007
Nitrogen (N)-Total	mg/L	0.1	0.3	0.3
Organic Carbon (C)-Dissolved	mg/L	4	83	95
Organic Carbon (C)-Total	mg/L	4	83	99
Redox Potential-Field	mV	-	215.2	222.4
Salinity	N/A	2.0	25	30
Styrene	mg/L	0.0005	<0.0005	<0.0005
Sulphate (SO4)-Dissolved	mg/L	13	1900	2300
Tetrachloroethene	mg/L	0.0005	<0.0005	<0.0005
Total Dissolved Solids_Calculated	mg/L	100	24000	28000
Total Kjeldahl Nitrogen (Calc)-Total	mg/L	0.1	0.2	0.1
Total Oil and Grease	mg/L	2	<2	<2
Total Suspended Solids	mg/L	1	2	5
Total Trihalomethanes	mg/L	0.0013	<0.0013	0.0028

Station	Unit	Lowest Detection Limit	BRP-40 Bathurst Inlet Intake (MLA)	BRP-41 Bathurst Inlet Discharge (MLA)
Date Time Lab Job Number Parameter			2026-02-10 07:15:00 C608039	2026-02-10 07:30:00 C608039
Trichloroethene	mg/L	0.0002	<0.0002	<0.0002
Trichlorofluoromethane	mg/L	0.0005	<0.0005	<0.0005
Turbidity	NTU	0.1	0.1	<0.1
Un-Ionized Ammonia	mg/L	0.0005	<0.0005	0.0005
Vinyl chloride	mg/L	0.0005	<0.0005	<0.0005
Xylenes, total	mg/L	0.0008	<0.0008	<0.0008
cis-1,2-dichloroethene	mg/L	0.0005	<0.0005	<0.0005
cis-1,3-dichloropropene	mg/L	0.0005	<0.0005	<0.0005
pH	pH Units	-	7.16	7.43
pH-Field	pH	-	7.12	7.35
trans-1,2-dichloroethene	mg/L	0.0005	<0.0005	<0.0005
trans-1,3-dichloropropene	mg/L	0.0005	<0.0005	<0.0005
Aluminum (Al)-Total	mg/L	0.15	<0.15	<0.15
Antimony (Sb)-Total	mg/L	0.025	<0.025	<0.025
Arsenic (As)-Total	mg/L	0.005	<0.005	<0.005
Barium (Ba)-Total	mg/L	0.05	<0.05	<0.05
Beryllium (Be)-Total	mg/L	0.005	<0.005	<0.005
Bismuth (Bi)-Total	mg/L	0.05	<0.05	<0.05
Boron (B)-Total	mg/L	2.5	2.7	3.2
Cadmium (Cd)-Total	mg/L	0.0005	<0.0005	<0.0005
Calcium (Ca)-Total	mg/L	2.5	293.0	351.0
Chromium (Cr)-Total	mg/L	0.05	<0.05	<0.05
Cobalt (Co)-Total	mg/L	0.01	<0.01	<0.01
Copper (Cu)-Total	mg/L	0.025	<0.025	<0.025
Iron (Fe)-Total	mg/L	0.5	<0.5	<0.5
Lead (Pb)-Total	mg/L	0.01	<0.01	<0.01
Lithium (Li)-Total	mg/L	0.1	<0.1	0.1
Magnesium (Mg)-Total	mg/L	2.5	937.0	1110.0
Manganese (Mn)-Total	mg/L	0.05	<0.05	<0.05
Mercury (Hg)-Total	mg/L	0.0000019	<0.0000019	-
Molybdenum (Mo)-Total	mg/L	0.05	<0.05	<0.05
Nickel (Ni)-Total	mg/L	0.05	<0.05	<0.05

Station	Unit	Lowest Detection Limit	BRP-40 Bathurst Inlet Intake (MLA)	BRP-41 Bathurst Inlet Discharge (MLA)
Date Time Lab Job Number Parameter			2026-02-10 07:15:00 C608039	2026-02-10 07:30:00 C608039
Phosphorus (P)-Total	mg/L	0.001	0.031	0.089
Potassium (K)-Total	mg/L	2.5	281.0	337.0
Selenium (Se)-Total	mg/L	0.005	<0.005	<0.005
Silicon (Si)-Total	mg/L	5	<5	<5
Silver (Ag)-Total	mg/L	0.001	<0.001	<0.001
Sodium (Na)-Total	mg/L	2.5	7840.0	9320.0
Strontium (Sr)-Total	mg/L	0.05	5.23	6.12
Sulphur (S)-Total	mg/L	150	713	860
Thallium (Tl)-Total	mg/L	0.0005	<0.0005	<0.0005
Tin (Sn)-Total	mg/L	0.25	<0.25	<0.25
Titanium (Ti)-Total	mg/L	0.25	<0.25	<0.25
Uranium (U)-Total	mg/L	0.005	<0.005	<0.005
Vanadium (V)-Total	mg/L	0.25	<0.25	<0.25
Zinc (Zn)-Total	mg/L	0.25	<0.25	<0.25
Zirconium (Zr)-Total	mg/L	0.005	<0.005	<0.005