



# GOOSE PROJECT

APRIL 2026 MONTHLY  
REPORT FOR WATER  
LICENCE 2AM-BRP1831

DATE  
May 24, 2026

REFERENCE  
Version 1.0



# **GOOSE PROJECT**

## **April 2026 MONTHLY REPORT**

### **In Compliance with:**

Water Licence 2AM-BRP1831 (Amendment No.1)

### **Prepared by:**

B2 Gold Nunavut

### **Submitted to:**

Nunavut Water Board (NWB)

#### **B2GOLD BACK RIVER CORP.**

Suite 3400, Park Place, 666 Burrard Street  
Vancouver, British Columbia, Canada, V6C 2X8  
Telephone: +1 604 681 8371

[www.b2gold.com](http://www.b2gold.com)

## EXECUTIVE SUMMARY

---

B2Gold Nunavut (B2Gold) was required as part of Part I, Item 18 of its Water Licence 2AM-BRP1831 (Amendment No. 1) (the Licence) to submit a Monthly Monitoring Report to the Nunavut Water Board within 30 days following the month being reported.

B2Gold carried out a monitoring program in accordance with Part I, Item 4 of the requirements. The results of the monitoring program identified any non-compliance with regards to the regulated discharge parameters under Parts D and F of the Licence.

B2Gold commits to continuing the monitoring as required by Part I, Item 4. Documentation of environmental conditions during spring freshet, major rain events, and periods of sustained precipitation will be considered where applicable. A Monthly Report will be submitted to the Board within thirty (30) days following the month being reported.



## AULAPKAIYININ NAITTUQ TITIRAQHIMAYUQ

B2Gold Nunavut (B2Gold) piqaqtukhaq ilagiyainik Ilangani I, Naunaitkut 18 talvani Imarnik Laisikharnik 2AMBRP1831 (Nuutaanguqtihimayuuq Nampa 1) (tamna Laisikhaq) tuniyukhaq Tatqikhiut Tamaat Munagidjutikharnik Ilitugidjutikharnik talvunga Nunavunmi Imarnik Katimayiinun 30nik ublurnik talvuuna tatqikhiutmi ilitugipkaktuavakhimayunik.

B2Gold havaktait munaridjutikkut pinahuarutit malikhugit Ilangani I, Hunat 4 piyakhani. Tamna naunairutikhangit munagidjutikharnik havaaqhangit ilitagihimayut kituliqaak aulangitun talvuuna malikhautikharnik kuvinikkut kiklivikhangit talvani Ilangani Dmi Fmilu talvani Laisikharnik.

B2Gold havakhimaarniaqtun aulahimaarniaqtun munagidjutikharnik atuqtakharnik talvani Ilangani I, Naunaitkut 4mi. Titirarlugit avatingni qanurinniit upin'ngakhami mahaktilirangat, nipalliqpiarangat, nipalukpallarangat ihumagiyauniaqtut piyuminaqqan. Tatqirhiutimi Taiguagakhaq tuniyauniaqtuuq Katimayiinun taimaa (30) ublunik talvannga tatqirhiutinganit taiguagakhamit.

## RÉSUMÉ EXÉCUTIF

---

B2Gold Nunavut (B2Gold) avait l'obligation, conformément à la Partie I, de l'Article 18 de sa Licence d'eau 2AM BRP1831 (Amendement n° 1) (la Licence), de soumettre un rapport de suivi mensuel au Conseil de l'eau du Nunavut dans les 30 jours suivant le mois faisant l'objet du rapport.

B2Gold a mené un programme de suivi conformément à la Partie I, de l'Article 4 des exigences. Les résultats du programme de suivi ont permis d'identifier aucune non-conformité concernant les paramètres de rejet réglementés énoncés aux Parties D et F de la Licence.

B2Gold s'engage à poursuivre le programme de suivi tel que requis par la Partie I, de l'Article 4. La documentation des conditions environnementales pendant la crue printanière, les pluies torrentielles, ainsi que les périodes de précipitations soutenues seront prises en compte le cas échéant. Un rapport mensuel sera soumis au Conseil dans les trente (30) jours suivant le mois faisant l'objet du rapport.

## TABLE OF CONTENTS

---

<b>EXECUTIVE SUMMARY</b>	I
<b>RÉSUMÉ EXÉCUTIF</b>	IV
<b>ACRONYMS AND ABBREVIATIONS</b>	VII
<b>1. INTRODUCTION</b>	1
<b>2. REGULATORY REQUIREMENTS AND STATUS</b>	3
2.1 PART I, Item 5	3
2.2 PART I, Item 8	3
2.3 PART I, Item 9	6
2.4 PART I, Item 20	7
<b>3. SCHEDULE I REQUIREMENTS</b>	8
3.1 BRP-17 Goose Property Sewage Treatment Plant	8
3.2 BRP-24 Goose Lake Intake	8
3.3 BRP-40 and 41 MLA Bathurst Inlet Desalination Intake and Discharge	8
3.4 BRP-42 MLA Greywater	8
3.5 BRP-I Interconnection WIR Proximal Water Bodies	8

### LIST OF TABLES

---

Table 2-1	Volumes of Water Obtained from Approved Sources	4
Table 2-2	Volumes of Water Obtained from Winter Ice Road Water Sources	4
Table 2-3	Estimated Volumes of Greywater Released for April 2026	5
Table 2-4	Quantity of Waste Rock Placed and Stored	6
Table A-1	Monitoring Activity Overview by Station for April 2026	10
Table B-1	Water Quality Data for BRP-40 and BRP-41 for April 2026	19
Table B-2	Water Quality Data for BRP-24 for April 2026	23

### LIST OF FIGURES

---

Figure 1	Goose Project Overview	2
----------	------------------------	---

## LIST OF APPENDICES

---

Appendix A Monitoring Activity Overview by Station

Appendix B Water Quality Analytical Results

## ACRONYMS AND ABBREVIATIONS

---

B2Gold Nunavut	B2Gold Back River Corporation
the Licence	Water Licence 2AM-BRP1831 (Amendment No.1)
AKMLA	Allen Kpolak Marine Laydown Area (also referred to as MLA)
The Goose Mine	Refers to the mining operation being developed within the Goose Claims Group, and includes the open pits, the underground mine, and the on-site infrastructure such as the WRSAs, tailings storage facilities, power infrastructure, and process plant
The Goose Project	Encompasses the Goose Claims Group, Goose Mine, the WIR and the MLA
STP	Sewage Treatment Plant
Tailings Facility	An open pit that is utilized to store tailings, waste rock, and/or acts as a water management facility (i.e., Llama, Umwelt, Echo, Goose Main)
Tailings Storage Facility	The purpose-built above ground facility designed to store tailings, waste rock and/or act as a water management facility as generally described in the Application
WIR	Winter Ice Road
WRSA	Waste Rock Storage Area

## 1. INTRODUCTION

---

The Goose Mine is a gold mine located within the western Kitikmeot Region of southwestern Nunavut. It is situated approximately 400 km southwest of Cambridge Bay, 95 km southeast of the southern end of Bathurst Inlet (Kingaok), and 520 km northeast of Yellowknife, Northwest Territories, as illustrated in Figure 1. The Mine is located predominantly within the Queen Maud Gulf Watershed.

As per PART I, Item 18 of the Water License 2AM-BRP1831 (Amendment No.1), B2Gold is required to submit to the Board, within thirty (30) following the month being reported, a Monthly Monitoring Report. Specific elements to be incorporated into the Report include:

- a. All data and information required by this Part and generated by the Monitoring Program in the Tables of Schedule I;
- b. An assessment of data to identify areas of non-compliance with regulated discharge parameters referred to in Part D and Part F; and
- c. Reports should document conditions during spring freshet, major rain events, and periods of sustained precipitation including flow measurements, photographs, and notes.

All analyses were performed in an accredited laboratory according to ISO/IEC Standard 17025 and the accreditation is current and in good standing as required by Part I, Item 17. Additionally, all analyses were conducted as described in the most recent edition of “*Standard Methods for the Examination of Water and Wastewater*” or by other such methods approved by an Analyst as required by Part I, Item 16. This report to the Nunavut Water Board is to satisfy these requirements.

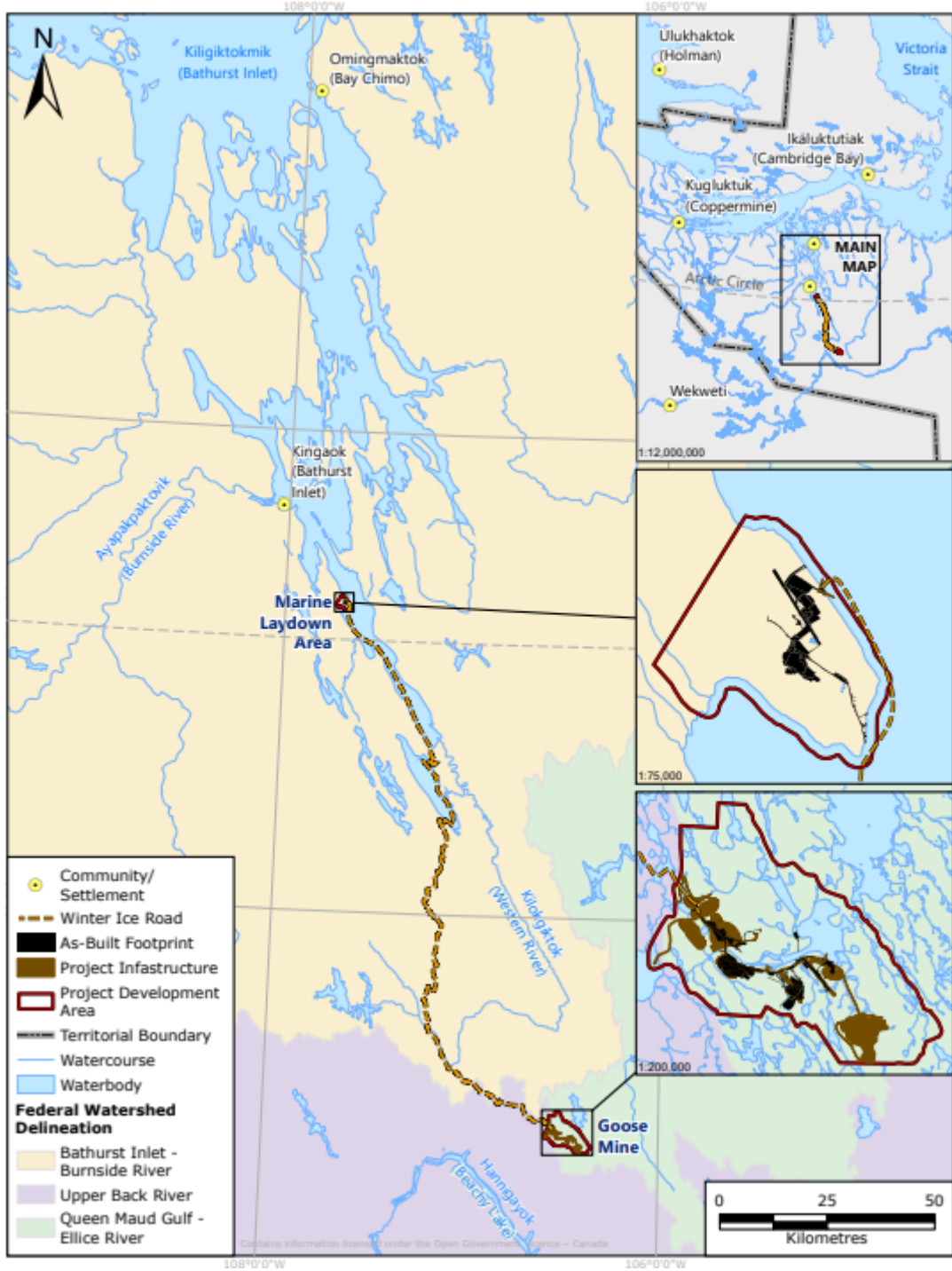


Figure 1 Goose Project Overview

## 2. REGULATORY REQUIREMENTS AND STATUS

---

### 2.1 PART I, Item 5

The Licensee shall, at least sixty (60) days prior to a change in Project Phase (Construction, Operations Stages), submit to the Board a written notification of the intent to change Project phase as per Part B, Item 9. Notifications may be provided separately or in accordance with the monthly monitoring report as per Part 1, Item 18.

**Compliance Status:**

No change in Project phase will occur over the next 60 days.

### 2.2 PART I, Item 8

The Licensee shall measure and record the following on a Monthly basis in cubic metres or as otherwise stated:

- a. The volume of fresh Water obtained from Big Lake;
- b. The volume of fresh Water obtained from Goose Lake;
- c. The volume of fresh Water obtained from MLA Pond S1, Pond S2, Lake 3, and Lake 4;
- d. The volume of fresh Water obtained from Llama Lake, Umwelt Lake, and other Water bodies approved by the Board for dewatering;
- e. The volume of fresh Water obtained from each Water source for the Interconnection Winter Ice Road and Winter Ice Road Service/Emergency Camps;
- f. The volume of Reclaim Water obtained from the Primary Water Pond, Tailings Storage Facility and/or Tailings Facilities for process Water at the process plant or alternative treatment system;
- g. The estimated volume of Greywater and Sewage released to the environment and/or to the Tailings Storage Facility and Tailings Facilities;
- h. The volume of sludge removed from the STP and the location and method of disposal;
- i. The volume of Effluent discharged from Landfarms, Fuel Tank Farms, and Fuel Storage Facilities;
- j. The estimated volume of Contact Water, WRSA Effluent, Ore Stockpile Effluent, or other Effluent/Water streams pumped into the Primary Water Pond, Tailings Storage Facility, Tailings Facilities, and/or transferred between ponds or facilities; and
- k. The volume of Effluent discharged at the Final Discharge Point.

**Compliance Status:**

The following is to comply with Part I, Item 8 (a, b, c, d, e, f, g, h, i, j, and k) requirements. The volumes of water obtained from Big Lake, Goose Lake, MLA Pond S1, MLA Pond S2, MLA Lake 3, MLA Lake 4, Llama Lake, Umwelt lake, and other water bodies approved for dewatering are provided in Table 2-1.

**Table 2-1 Volumes of Water Obtained from Approved Sources**

Source	Volume Used (m <sup>3</sup> )
Big Lake	0
Goose Lake	<b>23,425</b>
MLA Pond S1	0
MLA Pond S2	0
MLA Lake 3	0
MLA Lake 4	0
Llama Lake	0
Umwelt Lake	0
Other water bodies approved for dewatering	0

The volume of water obtained from each Winter Ice Road (WIR) water source this month is provided in Table 2-2. A total of **532 m<sup>3</sup>** of freshwater was used for WIR construction this month. The significant decrease in water usage was due to the WIR closing on April 8. Cumulative water withdrawal from each approved water source over the WIR season to date (December 2025 – April 2026) remained below the available capacity of each water source, with the exception of Lake 997. Refer to the January 2026 Monthly Report for Water Licence 2AM-BRP1831 for details regarding the withdrawal exceedance at Lake 997.

**Table 2-2 Volumes of Water Obtained from Winter Ice Road Water Sources**

Source	Volume Used this Month (m <sup>3</sup> )	Cumulative Volume Used this WIR Season (m <sup>3</sup> )	Approved Withdrawal Volume (10% of Available Capacity Below 2m Depth, m <sup>3</sup> )
Lake 1-0	0	3,562	39,603
Lake 2-0	0	3,549	53,507
Lake 3-0	0	6,895	79,375
Lake 4-0	0	1,687	19,379
Lake 6-0	0	1,555	25,362
Lake 7-0	0	3,821	433,645
Lake 9-0	0	9,107	53,703
Lake 11-0	70	8055	98,188
Lake 13-0a	0	5,819	15,112
Lake 14-0a	0	4,852	359,780
Lake 14-1	0	4,900	88,191
Lake 15-0	0	6,930	237,327
Lake 16-0	56	7,798	813,973
Lake 17-0	0	4,235	5,037,262

Source	Volume Used this Month (m <sup>3</sup> )	Cumulative Volume Used this WIR Season (m <sup>3</sup> )	Approved Withdrawal Volume (10% of Available Capacity Below 2m Depth, m <sup>3</sup> )
Lake 18-0	0	2,912	169,049
Lake 18-1	0	168	15,059
Lake 984	0	2590	7,174
Lake 19-0	0	5,541	9,827
Lake 20-0	0	7,021	1,413,939
Lake 23-0	0	2,940	39,637
Lake 24-0	0	2,590	59,995
Lake 994	0	1,218	6,103
Lake 25-0	0	11,410	86,824
Lake 26-0	0	6,552	9,711
Lake 997	0	2,688	1,512
Lake 28-0	0	5,124	23,951
Lake 29-0	0	6,629	324,682
Lake 30-0	0	11,445	56,674
Lake 31-0	28	28,231	261,697,854
Goose Main Water Source	378	616	
<b>Total Freshwater Use</b>	<b>532</b>	<b>170,440</b>	

**Notes:**

Available capacities are based on 2025 WIR Technical Memorandum available on the NWB registry. Volumes include water supplied to the MLA and Goose forward camp.

Approximately **58,343 m<sup>3</sup>** of reclaim water was obtained from the Echo Tailings Facility for process water at the process plant this month.

Sewage released from the Goose Sewage Treatment Plant (STP) to the environment (i.e., Tundra) is approximately **4,091 m<sup>3</sup>**. The estimated volumes of greywater released this month are presented in Table 2-3.

**Table 2-3 Estimated Volumes of Greywater Released for April 2026**

Locations	Volume (m <sup>3</sup> )	Destination
MLA	<b>318.5</b>	Tundra
MLA Forward Camp	<b>21.6</b>	Tundra
Goose Forward Camp	<b>5.6</b>	Tundra

**Note:**

Greywater estimates for the MLA, and both forward camps are approximate due to the lack of, or insufficient, flowmeters. These values are calculated based on 80% of the total freshwater intake.

The volume of compressed and dewatered sludge removed from the Goose STP and placed in the Umwelt Waste Rock Storage Area (WRSA) landfill this month is approximately **49 m<sup>3</sup>**. No effluent was discharged from Landfarms, fuel tank farms or fuel storage facilities this month.

The estimated volume of tailings slurry placed in the Echo Tailings Facility this month is **42,773 m<sup>3</sup>**. This volume is based on the process mill output that occurred this month. No other contact water, WRSA effluent, ore stockpile effluent, or other effluent/water streams were pumped into the Primary Pond, Tailings Storage Facility, other Tailings Facilities, and/or transferred between ponds or facilities this month.

No effluent was discharged at the Final Discharge Point at Monitoring Programs Station(s) BRP-58a to BRP-58xx (TBD) this month. Information required by Part F, Item 16 of the Licence, related to the Effluent Discharge Plan will be submitted to the Board at least 120 days prior to discharge of Effluent subject to Part F, Item 21 of the Licence.

The quantity of waste rock placed and stored at each WRSA and other locations approved by the Board are presented in Table 2-4.

**Table 2-4 Quantity of Waste Rock Placed and Stored**

Location	Volume this Month (tonnes)	Cumulative Volume (tonnes)
Echo WRSA	0	4,749,968
Umwelt WRSA	1,011,632	6,562,723

Dry tonnes of tailings placed in the Echo Tailings Facility this month is approximately **18,732 m<sup>3</sup>**. A total of **343,149 tonnes** of ore was stockpiled, and **28,098 tonnes** of ore was processed through the process plant this month.

## 2.3 PART I, Item 9

The Licensee shall measure and record the following on a Monthly basis in tonnes:

- Quantity of Waste placed within the Landfill(s) and Landfarm(s);
- Quantity of Waste Rock placed into, and total stored at, each Waste Storage Area and other locations approved by the Board;
- Dry tonnes of tailings placed into, and stored at, the Tailings Storage Facility and Tailings Facilities;
- Quantity of ore stockpiled and ore processed through the processing plant.

### Compliance Status:

Quantity of waste placed in the Landfill (cell 4 and 5) this month is approximately **624 m<sup>3</sup>**. The current cell (cell 5) situated within the Umwelt WRSA. No material was placed in either the Goose (BRP-51) or MLA (BRP-44) Landfarm this month. These facilities are not yet commissioned.

## 2.4 PART I, Item 20

No additional monitoring was imposed by the Inspector this month.

### 3. SCHEDULE I REQUIREMENTS

---

The information provided in the following sections is to comply with Part I, Item 4, which requires the Licensee to undertake the Monitoring Program provided in Table 1 and Table 2 of Schedule I.

Table A-1 (Appendix A) provides an overview of the monitoring stations, descriptions, and monitoring frequencies as well as a summary of monitoring activities completed this month. Additional details relevant to this month's monitoring are provided in the following sections.

#### 3.1 BRP-17 Goose Property Sewage Treatment Plant

The Goose STP discharges treated effluent to land in a manner to allow further over land treatment of the effluent prior to entering the freshwater receiving environment. The volume of treated sewage effluent discharged this month is provided in Section 2.2. Water was not available for sampling because of frozen conditions.

#### 3.2 BRP-24 Goose Lake Intake

Flow at the Goose Lake Intake point for potable and industrial water withdrawal is continuously metered. The total monthly volume withdrawn from Goose Lake under this Licence is reported in Section 2.2. One sample was collected from BRP-24 this month and results are provided in Table B-2 (Appendix B).

#### 3.3 BRP-40 and 41 MLA Bathurst Inlet Desalination Intake and Discharge

One sample was collected from each of BRP-40 and BRP-41 this month and results are provided in Table B-1 (Appendix B). Desalination water sampling results are analyzed and discussed in the Marine Monitoring Report included in B2Gold Nunavut's Annual Reports to the Nunavut Impact Review Board.

#### 3.4 BRP-42 MLA Greywater

The volume of greywater discharged to the tundra from the MLA Camp is reported in Section 2.2. No flow or water was available for sampling downstream of the discharge point (i.e., at BRP-42) due to frozen conditions.

#### 3.5 BRP-I Interconnection WIR Proximal Water Bodies

The volume of fresh water used in the construction of the WIR and at the WIR Service/Emergency Camps this month is provided in Section 2.2.

## **APPENDIX A**

### **MONITORING ACTIVITY OVERVIEW BY STATION**

**Table A-1 Monitoring Activity Overview by Station for April 2026**

Monitoring Program Station	Monitoring Type	Description	Mine Phase	Group Code*	Frequency	Monitoring Activity
BRP-G-01 to BRP-G-TBD	Regulated Monitoring	General Site Runoff Surficial runoff anywhere at both Goose Property and MLA, including quarries; monitoring for erosion and sedimentation.	Construction	C	Weekly if flow enters a waterbody	N/A – no runoff observed this month (frozen conditions)
BRP-S-01 to BRP-S-TBD	General Monitoring	General Seeps Seepage or runoff from excavated and/or stockpiled material anywhere at both Goose Property and MLA, including quarries, that does not gather into a collection system or the site is reclaimed.	Construction and Operations	A, D	Monthly during flow, or as found	N/A – no seepage observed this month (frozen conditions)
BRP-01	Regulated Monitoring	Goose Lake Discharge (discharge point for release of dewatering effluent with or without treatment)	Construction	A, B, G	Weekly during dewatering	N/A – no dewatering this month
				D	Four times during dewatering, at the same time as the weekly samples	
				H	Once per month during dewatering, at the same time as Group D	
				I	One time during dewatering, at the same time as Group D	

Monitoring Program Station	Monitoring Type	Description	Mine Phase	Group Code*	Frequency	Monitoring Activity
BRP-02	General Monitoring	Llama Lake (intake point for dewatering, triggers need for treatment prior to discharge at BRP-01)	Construction	C (TSS only)	Weekly if treatment is required; no sample if treatment is not required	N/A – no dewatering this month
BRP-03	Verification Monitoring	Llama Pit (representative of collected pit water prior to transfer to tailings management facility)	Operations Stage 1 to Operations Stage 2	A, G	At Licensee's discretion	N/A – facility not commissioned
BRP-04	General Monitoring	Llama Pit Lake (representative of flooded pit during flooding and before overflow to the downstream environment)	Closure* to post-closure	A, D	Twice per year	N/A – mine phase
BRP-05	Verification Monitoring	Llama WRSA Pond (representative of collected water quality)	Operations Stage 1 to Closure	A, G	At Licensee's discretion	N/A – facility not commissioned
BRP-06	General Monitoring	Umwelt Lake (intake point for dewatering, triggers need for treatment prior to discharge at BRP-01)	Construction	C (TSS only)	Weekly if treatment is required; no sample if treatment is not required	N/A – no dewatering this month
BRP-07	Verification Monitoring	Umwelt Pit (representative of collected pit water prior to transfer to tailings management facility)	Construction to Operations Stage 2	A, G	At Licensee's discretion	N/A – pit construction was initiated in early 2025; no transfer this month
BRP-08	General Monitoring	Umwelt Pit Lake (representative of flooded pit during flooding and before overflow to the downstream environment)	Closure to post-closure	A, D	Twice per year	N/A – mine phase

Monitoring Program Station	Monitoring Type	Description	Mine Phase	Group Code*	Frequency	Monitoring Activity
BRP-09	Verification Monitoring	Umwelt WRSA Pond (representative of collected water quality, including landfill seepage/runoff)	Construction to Closure (early)*	A, G	At Licensee's discretion	N/A – facility not commissioned
BRP-10	Verification Monitoring	Primary Water Pond (representative of collected water quality)	Construction to Closure (early)	A, D	At Licensee's discretion	Facility commissioned in July 2025; no samples collected this month
BRP-11	Verification Monitoring	Saline Water Pond (representative of stored water quality)	Construction (late) to Closure (early)	A, D	At Licensee's discretion	N/A – facility not commissioned
BRP-12	General Monitoring	Big Lake Intake (intake point for potable and industrial water withdrawal)	Construction to Closure	A, D	Four times per year	N/A – facility not commissioned
				B	Weekly	
BRP-13	Verification Monitoring	Ore Stockpile Pond (representative of collected water quality)	Construction to Closure (early)	A, D	At Licensee's discretion	N/A – no sample collected this month due to frozen conditions
BRP-14	Verification Monitoring	ANFO Plant (representative of collected water quality)	Construction to Closure	A, E	At Licensee's discretion	N/A – facility not commissioned
BRP-15	Regulated Monitoring	Goose Fuel Tank Farm (representative of collected water quality)	Construction to Closure	A, E	Prior to discharge or transfer of water	N/A – no discharge this month
BRP-16	Regulated Monitoring	Goose Hazardous Waste Management Area (representative of collected water quality)	Construction to Closure	A, E	Prior to discharge or transfer of water	N/A – facility not commissioned
BRP-17	Regulated Monitoring	Goose Property Sewage Treatment Plant (treated sewage discharge/drainage immediately)	Construction to Closure	A, F	Monthly	N/A – no sample collected this month

Monitoring Program Station	Monitoring Type	Description	Mine Phase	Group Code*	Frequency	Monitoring Activity
		prior to the point of entry into freshwater)				due to frozen conditions.
BRP-17A	Regulated Monitoring	Goose Property Sewage Treatment Plant (discharge point for treated sewage into Tailings Storage Facility or Tailing Facility)	Construction to Closure*	A, F	Prior to discharge	N/A – no STP discharge to the TSF or TF
BRP-18	General Monitoring	Llama Watershed Outflow (representative of non-contact water, PN04 from Water and Load Balance)	Operations Stage 1 to Closure	A, D	Once during freshet and monthly during upstream construction while visible flow is present at the stations	N/A – no samples collected this month due to frozen conditions
BRP-19	General Monitoring	Echo Outflow (representative of non-contact water). PN09 from water and load balance	Operations Stage 1 to Closure	A, D	Once during freshet and monthly during upstream construction while visible flow is present at the stations	N/A – no samples collected this month due to frozen conditions
BRP-20	Verification Monitoring	Echo Pit (representative of collected pit water prior to transfer to tailings management facility)	Operations Stage 2	A, G	At Licensee's discretion	N/A – mine phase
BRP-21	General Monitoring	Echo Pit Lake (representative of flooded pit during flooding and before overflow to the downstream environment)	Closure to post-closure	A, D	Twice per year	N/A – mine phase

Monitoring Program Station	Monitoring Type	Description	Mine Phase	Group Code*	Frequency	Monitoring Activity
BRP-22	Verification Monitoring	Echo WRSA Pond (representative of collected water quality)	Operations Stage 2 to Closure (early)	A, G	At Licensee's discretion	N/A – mine phase
BRP-23	General Monitoring	Gander Pond Outflow (representative of non-contact water, PN07 from Water and Load Balance)	Operations Stage 1 to Closure	A, D	Once during freshet and monthly during upstream construction while visible flow is present at the stations	N/A – no samples collected this month due to frozen conditions
BRP-24	General Monitoring	Goose Lake Intake (intake point for potable and industrial water withdrawal)	Operations Stage 1 to Closure (early)	B	Weekly	Active. See Appendix B
BRP-25	Verification Monitoring	Goose Pit (representative of collected pit water prior to transfer to tailings management facility)	Operations Stage 1 to Operations Stage 2	A, G	At Licensee's discretion	N/A – facility not commissioned
BRP-26	General Monitoring	Goose Pit Lake (representative of flooded pit during flooding and before overflow to the downstream environment)	Closure* to post-closure	A, D	Twice per year	N/A – mine phase
BRP-27	Verification Monitoring	Goose Main Tailings Facility (intake point for water treatment, represents pre- treatment water quality)	Operations Stage 3 to Closure	A, G	At Licensee's discretion	N/A – mine phase
BRP-28	Verification Monitoring	Goose Main Tailings Facility (discharge point for water)	Operations Stage 3 to Closure	A, G	At Licensee's discretion	N/A – mine phase

Monitoring Program Station	Monitoring Type	Description	Mine Phase	Group Code*	Frequency	Monitoring Activity
		treatment, represents post-treatment water quality)				
BRP-29	Verification Monitoring	TSF WRSA Pond (representative of collected water quality, including landfill seepage/runoff)	Operations Stage 1 to Closure	A, G	At Licensee's discretion	N/A – facility not commissioned
BRP-30	General Monitoring	Goose Southeast Inflow (representative of non-contact water, PN06 from Water and Load Balance)	Operations Stage 1 to Closure	A, D	Once during freshet	N/A – not freshet
BRP-40	General Monitoring	Bathurst Inlet Intake (intake point in marine environment for potable and industrial water withdrawal)	Construction to Closure	A, D, B	At Licensee's discretion	Active. See Section 3 and Appendix B
BRP-41	General Monitoring	Bathurst Inlet Discharge (discharge point in marine environment for effluent from desalinization plant)	Construction to Closure	A, J	At Licensee's discretion	Active. See Section 3 and Appendix B
BRP-42	Regulated Monitoring	MLA Greywater (representative drainage at point of entry to the marine receiving environment)	Construction to Closure	A, F	Monthly when discharging	N/A – no samples collected this month due to frozen conditions
BRP-43	Regulated Monitoring	MLA Fuel Tank Farm (representative of collected water quality)	Construction to Closure	A, E	Prior to discharge or transfer of water	N/A – no discharge this month
BRP-44	Regulated Monitoring	MLA Landfarm (representative of collected water quality)	Construction to Closure	A, E	Prior to discharge or transfer of water	N/A – facility not commissioned
BRP-45	Regulated Monitoring	MLA Hazardous Waste Management Area (representative of collected water quality)	Construction to Closure	A, E	Prior to discharge or transfer of water	N/A – facility not commissioned

Monitoring Program Station	Monitoring Type	Description	Mine Phase	Group Code*	Frequency	Monitoring Activity
BRP-49	Regulated Monitoring	MLA Temporary Fuel Storage Facility (representative of collected water quality)	Construction	A, E	Prior to discharge or transfer of water	N/A – no discharge this month
BRP-51	Regulated Monitoring	Goose Landfarm (representative of collected water quality)	Construction to Closure	A, E	Prior to discharge or transfer of water	N/A – facility not commissioned
BRP-52	General Monitoring	MLA Pond S1 (intake point for potable and industrial water withdrawal)	Construction to Closure	A, D	Once per quarter when in use	N/A – no water was withdrawn this month
				B	Weekly when in use	
BRP-53	General Monitoring	MLA Pond S2 (intake point for potable and industrial water withdrawal)	Construction to Closure	A, D	Once per quarter when in use	N/A – no water was withdrawn this month
				B	Weekly when in use	
BRP-54	General Monitoring	MLA Lake 3 (intake point for potable and industrial water withdrawal)	Construction to Closure	A, D	Once per quarter when in use	N/A – no water was withdrawn this month
				B	Weekly when in use	
BRP-55	General Monitoring	MLA Lake 4 (intake point for potable and industrial water withdrawal)	Construction to Closure	A, D	Once per quarter when in use	N/A – no water was withdrawn this month
				B	Weekly when in use	
BRP-56	General Monitoring	Llama Tailings Facility (collected at "inlet" to treatment facility pre-treatment quality)	Operations to Closure	A, G	At Licensee's discretion	N/A – facility not commissioned
BRP-57	General Monitoring	Llama Tailings Facility (after treatment; collected at "outlet" of treatment facility; no discharge to the receiving environment post-treatment quality to confirm treatment efficiency)	Operations to Closure	A, G	At Licensee's discretion	N/A – facility not commissioned

Monitoring Program Station	Monitoring Type	Description	Mine Phase	Group Code*	Frequency	Monitoring Activity
BRP-58a to BRP-58xx (TBD)	Regulated Monitoring	Final Discharge Point Goose Lake			As per Part F, Item 16	N/A – no discharge this month
BRP-I-01 to BRP-I-TBD	General Monitoring	Interconnection Winter Ice Road Proximal Water Bodies (intake points for fresh water used in the construction of the Interconnection Winter Ice Road and WIR Service/Emergency Camps)	Construction to Closure	B	Weekly when in use	Active. See Section 3

**Note:**

\* Refers to Group Code from Water Licence 2AM-BRP1831 Schedule I Table 1.

## APPENDIX B

### WATER QUALITY ANALYTICAL RESULTS

Table B-1 Water Quality Data for BRP-40 and BRP-41 for April 2026

Station	Unit	Lowest Detection Limit	BRP-40 Bathurst Inlet Intake (MLA)	BRP-41 Bathurst Inlet Discharge (MLA)
Analyte			2026-04-28 07:00:00 C623241	2026-04-28 07:10:00 C623241
Aluminum (Al)-Dissolved	mg/L	0.030	<0.030	<0.030
Antimony (Sb)-Dissolved	mg/L	0.0050	<0.0050	<0.0050
Arsenic (As)-Dissolved	mg/L	0.0010	0.0014	0.0014
Barium (Ba)-Dissolved	mg/L	0.010	0.014	0.014
Beryllium (Be)-Dissolved	mg/L	0.0010	<0.0010	<0.0010
Bismuth (Bi)-Dissolved	mg/L	0.010	<0.010	<0.010
Boron (B)-Dissolved	mg/L	0.50	4.30	4.19
Cadmium (Cd)-Dissolved	mg/L	0.00010	<0.00010	<0.00010
Calcium (Ca)-Dissolved	mg/L	0.50	340	349
Chromium (Cr)-Dissolved	mg/L	0.010	<0.010	<0.010
Cobalt (Co)-Dissolved	mg/L	0.0020	<0.0020	<0.0020
Copper (Cu)-Dissolved	mg/L	0.0020	<0.0020	<0.0020
Iron (Fe)-Dissolved	mg/L	0.050	<0.050	<0.050
Lead (Pb)-Dissolved	mg/L	0.0020	<0.0020	<0.0020
Lithium (Li)-Dissolved	mg/L	0.020	0.158	0.153
Magnesium (Mg)-Dissolved	mg/L	0.50	1040	1060
Manganese (Mn)-Dissolved	mg/L	0.010	<0.010	<0.010
Mercury (Hg)-Dissolved	mg/L	0.0000019	<0.0000019	-
Molybdenum (Mo)-Dissolved	mg/L	0.010	<0.010	<0.010
Nickel (Ni)-Dissolved	mg/L	0.010	<0.010	<0.010
Nitrate (NO <sub>3</sub> )-Dissolved	mg/L	0.066	<0.066	<0.066
Nitrite (NO <sub>2</sub> )-Dissolved	mg/L	0.0033	0.0060	0.0060
Potassium (K)-Dissolved	mg/L	0.50	324	326
Selenium (Se)-Dissolved	mg/L	0.0010	<0.0010	<0.0010
Silicon (Si)-Dissolved	mg/L	1.0	<1.0	<1.0
Silver (Ag)-Dissolved	mg/L	0.00020	<0.00020	<0.00020
Sodium (Na)-Dissolved	mg/L	0.50	8620	8760
Strontium (Sr)-Dissolved	mg/L	0.010	6.51	6.57
Sulphur (S)-Dissolved	mg/L	30	824	841
Thallium (Tl)-Dissolved	mg/L	0.00010	<0.00010	<0.00010
Tin (Sn)-Dissolved	mg/L	0.050	<0.050	<0.050

Station	Unit	Lowest Detection Limit	BRP-40 Bathurst Inlet Intake (MLA)	BRP-41 Bathurst Inlet Discharge (MLA)
Analyte			2026-04-28 07:00:00 C623241	2026-04-28 07:10:00 C623241
Titanium (Ti)-Dissolved	mg/L	0.050	<0.050	<0.050
Uranium (U)-Dissolved	mg/L	0.0010	0.0026	0.0028
Vanadium (V)-Dissolved	mg/L	0.050	<0.050	<0.050
Zinc (Zn)-Dissolved	mg/L	0.050	<0.050	<0.050
Zirconium (Zr)-Dissolved	mg/L	0.0010	<0.0010	<0.0010
1,1,1,2-tetrachloroethane	mg/L	0.0010	<0.0010	<0.0010
1,1,1-trichloroethane	mg/L	0.00050	<0.00050	<0.00050
1,1,2,2-tetrachloroethane	mg/L	0.0020	<0.0020	<0.0020
1,1,2-trichloroethane	mg/L	0.00050	<0.00050	<0.00050
1,1-dichloroethane	mg/L	0.00050	<0.00050	<0.00050
1,1-dichloroethene	mg/L	0.00050	<0.00050	<0.00050
1,2,3-trichlorobenzene	mg/L	0.0010	<0.0010	<0.0010
1,2,4-trichlorobenzene	mg/L	0.0010	<0.0010	<0.0010
1,2,4-trimethylbenzene	mg/L	0.00050	<0.00050	<0.00050
1,2-dibromoethane	mg/L	0.00020	<0.00020	<0.00020
1,2-dichlorobenzene	mg/L	0.00050	<0.00050	<0.00050
1,2-dichloroethane	mg/L	0.00050	<0.00050	<0.00050
1,2-dichloropropane	mg/L	0.00050	<0.00050	<0.00050
1,3,5-trichlorobenzene	mg/L	0.00050	<0.00050	<0.00050
1,3,5-trimethylbenzene	mg/L	0.00050	<0.00050	<0.00050
1,3-dichlorobenzene	mg/L	0.00050	<0.00050	<0.00050
1,4-dichlorobenzene	mg/L	0.00050	<0.00050	<0.00050
Alkalinity (PP as CaCO <sub>3</sub> )	mg/L	0.50	<0.50	<0.50
Alkalinity (Total as CaCO <sub>3</sub> )	mg/L	0.50	123	158
Ammonia (N)-Total	mg/L	0.0050	0.18	0.14
Bicarbonate (HCO <sub>3</sub> )	mg/L	0.50	150	192
Bromodichloromethane	mg/L	0.00050	<0.00050	<0.00050
Bromoform	mg/L	0.00050	0.00087	0.00090
Bromomethane	mg/L	0.0020	<0.0020	<0.0020
Carbon tetrachloride	mg/L	0.00050	<0.00050	<0.00050
Carbonate (CO <sub>3</sub> )	mg/L	0.50	<0.50	<0.50
Chloride (Cl)-Dissolved	mg/L	100	14000	15000
Chlorobenzene	mg/L	0.00050	<0.00050	<0.00050

Station	Unit	Lowest Detection Limit	BRP-40 Bathurst Inlet Intake (MLA)	BRP-41 Bathurst Inlet Discharge (MLA)
Analyte			2026-04-28 07:00:00 C623241	2026-04-28 07:10:00 C623241
Chloroethane	mg/L	0.0010	<0.0010	<0.0010
Chloroform	mg/L	0.00050	<0.00050	<0.00050
Chloromethane	mg/L	0.0020	<0.0020	<0.0020
Conductivity	µS/cm	1.0	43400	44300
Dibromochloromethane	mg/L	0.0010	<0.0010	<0.0010
Dichloromethane	mg/L	0.0020	<0.0020	<0.0020
F1 (C6-C10)	mg/L	0.10	<0.10	<0.10
F1 (C6-C10) - BTEX	mg/L	0.10	<0.10	<0.10
Field Temperature	deg. C	-	0.1	0.2
Fluoride (F)	mg/L	0.010	0.813	0.862
Hardness (CaCO3)-Dissolved	mg/L	0.50	5130	5240
Hardness (CaCO3)-Total	mg/L	0.50	5270	5300
Hydroxide (OH)	mg/L	0.50	<0.50	<0.50
Methyl methacrylate	mg/L	0.00050	<0.00050	<0.00050
Methyl-tert-butyl ether (MTBE)	mg/L	0.00050	<0.00050	<0.00050
Nitrate (as N)	mg/L	0.015	<0.015	<0.015
Nitrate plus Nitrite (N)	mg/L	0.015	<0.015	<0.015
Nitrite (as N)	mg/L	0.0010	0.0018	0.0018
Nitrogen (N)-Total	mg/L	0.10	0.27	0.23
Organic Carbon (C)-Dissolved	mg/L	4.0	79	83
Organic Carbon (C)-Total	mg/L	4.0	89	88
Redox Potential-Field	mV	-	459.4	442.4
Salinity	N/A	-	-	-
Styrene	mg/L	0.00050	<0.00050	<0.00050
Sulphate (SO4)-Dissolved	mg/L	13	2000	2000
Tetrachloroethene	mg/L	0.00050	<0.00050	<0.00050
Total Dissolved Solids Calculated	mg/L	100	27000	27000
Total Kjeldahl Nitrogen (Calc)-Total	mg/L	0.10	0.27	0.23
Total Oil and Grease	mg/L	2.0	8.0	3.0
Total Suspended Solids	mg/L	1.0	7.9	<1.0
Total Trihalomethanes	mg/L	0.0013	<0.0013	<0.0013
Trichloroethene	mg/L	0.00020	<0.00020	<0.00020
Trichlorofluoromethane	mg/L	0.00050	<0.00050	<0.00050

Station	Unit	Lowest Detection Limit	BRP-40 Bathurst Inlet Intake (MLA)	BRP-41 Bathurst Inlet Discharge (MLA)
Analyte			2026-04-28 07:00:00 C623241	2026-04-28 07:10:00 C623241
Turbidity	NTU	0.10	0.12	<0.10
Un-Ionized Ammonia	mg/L	0.00050	<0.00050	<0.00050
Vinyl chloride	mg/L	0.00050	<0.00050	<0.00050
Xylenes, total	mg/L	0.00089	<0.00089	<0.00089
cis-1,2-dichloroethene	mg/L	0.00050	<0.00050	<0.00050
cis-1,3-dichloropropene	mg/L	0.00050	<0.00050	<0.00050
pH	pH Units	-	7.9	7.95
pH-Field	pH	-	7.48	7.58
trans-1,2-dichloroethene	mg/L	0.00050	<0.00050	<0.00050
trans-1,3-dichloropropene	mg/L	0.00050	<0.00050	<0.00050
Aluminum (Al)-Total	mg/L	0.030	<0.030	<0.030
Antimony (Sb)-Total	mg/L	0.0050	<0.0050	<0.0050
Arsenic (As)-Total	mg/L	0.0010	0.0013	0.0014
Barium (Ba)-Total	mg/L	0.010	0.014	0.015
Beryllium (Be)-Total	mg/L	0.0010	<0.0010	<0.0010
Bismuth (Bi)-Total	mg/L	0.010	<0.010	<0.010
Boron (B)-Total	mg/L	0.50	4.31	3.68
Cadmium (Cd)-Total	mg/L	0.00010	0.00014	0.00012
Calcium (Ca)-Total	mg/L	0.50	339	348
Chromium (Cr)-Total	mg/L	0.010	<0.010	<0.010
Cobalt (Co)-Total	mg/L	0.0020	<0.0020	<0.0020
Copper (Cu)-Total	mg/L	0.0050	<0.0050	<0.0050
Iron (Fe)-Total	mg/L	0.10	<0.10	<0.10
Lead (Pb)-Total	mg/L	0.0020	<0.0020	<0.0020
Lithium (Li)-Total	mg/L	0.020	0.130	0.140
Magnesium (Mg)-Total	mg/L	0.50	1070	1080
Manganese (Mn)-Total	mg/L	0.010	<0.010	<0.010
Mercury (Hg)-Total	mg/L	0.0000019	<0.0000019	-
Molybdenum (Mo)-Total	mg/L	0.010	<0.010	<0.010
Nickel (Ni)-Total	mg/L	0.010	<0.010	<0.010
Phosphorus (P)-Total	mg/L	0.0010	0.086	0.095
Potassium (K)-Total	mg/L	0.50	330	337

Station	Unit	Lowest Detection Limit	BRP-40 Bathurst Inlet Intake (MLA)	BRP-41 Bathurst Inlet Discharge (MLA)
Analyte			2026-04-28 07:00:00 C623241	2026-04-28 07:10:00 C623241
Selenium (Se)-Total	mg/L	0.0010	<0.0010	<0.0010
Silicon (Si)-Total	mg/L	1.0	<1.0	<1.0
Silver (Ag)-Total	mg/L	0.00020	<0.00020	<0.00020
Sodium (Na)-Total	mg/L	0.50	9170	9160
Strontium (Sr)-Total	mg/L	0.010	6.36	6.50
Sulphur (S)-Total	mg/L	30	802	813
Thallium (Tl)-Total	mg/L	0.00010	<0.00010	<0.00010
Tin (Sn)-Total	mg/L	0.050	<0.050	<0.050
Titanium (Ti)-Total	mg/L	0.050	<0.050	<0.050
Uranium (U)-Total	mg/L	0.0010	0.0029	0.0029
Vanadium (V)-Total	mg/L	0.050	<0.050	<0.050
Zinc (Zn)-Total	mg/L	0.050	<0.050	<0.050
Zirconium (Zr)-Total	mg/L	0.0010	<0.0010	<0.0010

**Table B-2 Water Quality Data for BRP-24 for April 2026**

Station	Unit	Lowest Detection Limit	BRP-24 Goose Lake Intake
Analyte			2026-04-07 13:15:00 C618937
Aluminum (Al)-Dissolved	mg/L	0.030	0.0159
Antimony (Sb)-Dissolved	mg/L	0.00050	<0.0005
Arsenic (As)-Dissolved	mg/L	0.0001	0.00071
Barium (Ba)-Dissolved	mg/L	0.0010	0.0294
Beryllium (Be)-Dissolved	mg/L	0.0001	<0.00010
Bismuth (Bi)-Dissolved	mg/L	0.001	<0.0010
Boron (B)-Dissolved	mg/L	0.050	<0.050
Cadmium (Cd)-Dissolved	mg/L	0.000010	0.000038
Calcium (Ca)-Dissolved	mg/L	0.050	16.2
Chromium (Cr)-Dissolved	mg/L	0.0010	<0.0010
Cobalt (Co)-Dissolved	mg/L	0.00020	0.00079
Copper (Cu)-Dissolved	mg/L	0.00020	0.00297

Station	Unit	Lowest Detection Limit	BRP-24 Goose Lake Intake
Analyte			2026-04-07 13:15:00 C618937
Iron (Fe)-Dissolved	mg/L	0.0050	0.0123
Lead (Pb)-Dissolved	mg/L	0.00020	<0.00020
Lithium (Li)-Dissolved	mg/L	0.0020	<0.0020
Magnesium (Mg)-Dissolved	mg/L	0.050	7.67
Manganese (Mn)-Dissolved	mg/L	0.0010	0.0149
Mercury (Hg)-Dissolved	mg/L	0.0000019	<0.0000019
Molybdenum (Mo)-Dissolved	mg/L	0.0010	<0.0010
Nickel (Ni)-Dissolved	mg/L	0.0010	0.0151
Nitrate (NO <sub>3</sub> )-Dissolved	mg/L	0.89	7.4
Nitrite (NO <sub>2</sub> )-Dissolved	mg/L	0.0033	0.26
Potassium (K)-Dissolved	mg/L	0.050	1.57
Selenium (Se)-Dissolved	mg/L	0.00010	<0.00010
Silicon (Si)-Dissolved	mg/L	0.10	0.49
Silver (Ag)-Dissolved	mg/L	0.000020	<0.000020
Sodium (Na)-Dissolved	mg/L	0.050	2.83
Strontium (Sr)-Dissolved	mg/L	0.0010	0.0872
Sulphur (S)-Dissolved	mg/L	3.0	13.7
Thallium (Tl)-Dissolved	mg/L	0.000010	<0.000010
Tin (Sn)-Dissolved	mg/L	0.0050	<0.0050
Titanium (Ti)-Dissolved	mg/L	0.0050	<0.0050
Uranium (U)-Dissolved	mg/L	0.00010	<0.00010
Vanadium (V)-Dissolved	mg/L	0.0050	<0.0050
Zinc (Zn)-Dissolved	mg/L	0.0050	0.0121
Zirconium (Zr)-Dissolved	mg/L	0.00010	<0.00010
1,1,1,2-tetrachloroethane	mg/L	0.0010	<0.0010
1,1,1-trichloroethane	mg/L	0.00050	<0.00050
1,1,2,2-tetrachloroethane	mg/L	0.0020	<0.0020
1,1,2-trichloroethane	mg/L	0.00050	<0.00050
1,1-dichloroethane	mg/L	0.00050	<0.00050
1,1-dichloroethene	mg/L	0.00050	<0.00050
1,2,3-trichlorobenzene	mg/L	0.0010	<0.0010
1,2,4-trichlorobenzene	mg/L	0.0010	<0.0010
1,2,4-trimethylbenzene	mg/L	0.00050	<0.00050

Station	Unit	Lowest Detection Limit	BRP-24 Goose Lake Intake
Analyte			2026-04-07 13:15:00 C618937
1,2-dibromoethane	mg/L	0.00020	<0.00020
1,2-dichlorobenzene	mg/L	0.00050	<0.00050
1,2-dichloroethane	mg/L	0.00050	<0.00050
1,2-dichloropropane	mg/L	0.00050	<0.00050
1,3,5-trichlorobenzene	mg/L	0.00050	<0.00050
1,3,5-trimethylbenzene	mg/L	0.00050	<0.00050
1,3-dichlorobenzene	mg/L	0.00050	<0.00050
1,4-dichlorobenzene	mg/L	0.00050	<0.00050
Alkalinity (PP as CaCO <sub>3</sub> )	mg/L	0.50	<0.50
Alkalinity (Total as CaCO <sub>3</sub> )	mg/L	0.50	14.1
Ammonia (N)-Total	mg/L	0.0050	0.047
Bicarbonate (HCO <sub>3</sub> )	mg/L	0.0004	<0.0004
Bromodichloromethane	mg/L	0.50	17.2
Bromoform	mg/L	0.00050	<0.00050
Bromomethane	mg/L	0.0020	<0.0020
Carbon tetrachloride	mg/L	0.00050	<0.00050
Carbonate (CO <sub>3</sub> )	mg/L	0.50	<0.50
Chloride (Cl)-Dissolved	mg/L	0.50	19
Chlorobenzene	mg/L	0.00050	<0.00050
Chloroethane	mg/L	0.0010	<0.0010
Chloroform	mg/L	0.00050	<0.00050
Chloromethane	mg/L	0.0020	<0.0020
Conductivity	µS/cm	1.0	205
Dibromochloromethane	mg/L	0.0010	<0.0010
Dichloromethane	mg/L	0.0020	<0.0020
F1 (C6-C10)	mg/L	0.0004	<0.0004
F1 (C6-C10) - BTEX	mg/L	0.10	<0.10
Field Temperature	deg. C	0.10	<0.10
Fluoride (F)	mg/L	0.010	0.033
Hardness (CaCO <sub>3</sub> )-Dissolved	mg/L	0.50	72.0
Hardness (CaCO <sub>3</sub> )-Total	mg/L	0.50	78.0
Hydroxide (OH)	mg/L	0.50	<0.50
Methyl methacrylate	mg/L	0.00050	<0.00050

Station	Unit	Lowest Detection Limit	BRP-24 Goose Lake Intake
Analyte			2026-04-07 13:15:00 C618937
Methyl-tert-butyl ether (MTBE)	mg/L	0.00050	<0.00050
Nitrate (as N)	mg/L	0.20	1.7
Nitrate plus Nitrite (N)	mg/L	0.20	1.8
Nitrite (as N)	mg/L	0.0010	0.079
Nitrogen (N)-Total	mg/L	0.10	2.0
Organic Carbon (C)-Dissolved	mg/L	0.20	5.7
Organic Carbon (C)-Total	mg/L	0.20	6.2
Redox Potential-Field	mV	-	198.6
Salinity	N/A	-	-
Styrene	mg/L	0.00050	<0.00050
Sulphate (SO4)-Dissolved	mg/L	0.50	42
Tetrachloroethene	mg/L	0.00050	<0.00050
Total Dissolved Solids Calculated	mg/L	0.0004	<0.0004
Total Kjeldahl Nitrogen (Calc)-Total	mg/L	10	110
Total Oil and Grease	mg/L	2.0	<2.0
Total Suspended Solids	mg/L	1.0	<1.0
Total Trihalomethanes	mg/L	0.0013	<0.0013
Trichloroethene	mg/L	0.00020	<0.00020
Trichlorofluoromethane	mg/L	0.00050	<0.00050
Turbidity	NTU	0.10	0.16
Un-Ionized Ammonia	mg/L	0.00050	<0.00050
Vinyl chloride	mg/L	0.00050	<0.00050
Xylenes, total	mg/L	0.00089	<0.00089
cis-1,2-dichloroethene	mg/L	0.00050	<0.00050
cis-1,3-dichloropropene	mg/L	0.00050	<0.00050
pH	pH Units	-	6.07
pH-Field	pH	-	6.2
trans-1,2-dichloroethene	mg/L	0.00050	<0.00050
trans-1,3-dichloropropene	mg/L	0.00050	<0.00050
Aluminum (Al)-Total	mg/L	0.0030	0.0218
Antimony (Sb)-Total	mg/L	0.00050	<0.00050
Arsenic (As)-Total	mg/L	0.00010	0.00072

Station	Unit	Lowest Detection Limit	BRP-24 Goose Lake Intake
Analyte			2026-04-07 13:15:00 C618937
Barium (Ba)-Total	mg/L	0.0010	0.0271
Beryllium (Be)-Total	mg/L	0.00010	<0.00010
Bismuth (Bi)-Total	mg/L	0.0010	<0.0010
Boron (B)-Total	mg/L	0.050	<0.050
Cadmium (Cd)-Total	mg/L	0.000010	0.000026
Calcium (Ca)-Total	mg/L	0.050	16.7
Chromium (Cr)-Total	mg/L	0.0010	<0.0010
Cobalt (Co)-Total	mg/L	0.00020	0.00074
Copper (Cu)-Total	mg/L	0.00050	0.00287
Iron (Fe)-Total	mg/L	0.010	0.029
Lead (Pb)-Total	mg/L	0.00020	<0.00020
Lithium (Li)-Total	mg/L	0.0020	<0.0020
Magnesium (Mg)-Total	mg/L	0.050	8.81
Manganese (Mn)-Total	mg/L	0.0010	0.0155
Mercury (Hg)-Total	mg/L	0.0000019	<0.0000019
Molybdenum (Mo)-Total	mg/L	0.0010	<0.0010
Nickel (Ni)-Total	mg/L	0.0010	0.0151
Phosphorus (P)-Total	mg/L	0.0010	0.0021
Potassium (K)-Total	mg/L	0.050	1.59
Selenium (Se)-Total	mg/L	0.00010	<0.00010
Silicon (Si)-Total	mg/L	0.10	0.58
Silver (Ag)-Total	mg/L	0.000020	<0.000020
Sodium (Na)-Total	mg/L	0.050	3.01
Strontium (Sr)-Total	mg/L	0.0010	0.0825
Sulphur (S)-Total	mg/L	3.0	13.6
Thallium (Tl)-Total	mg/L	0.000010	<0.000010
Tin (Sn)-Total	mg/L	0.0050	<0.0050
Titanium (Ti)-Total	mg/L	0.0050	<0.0050
Uranium (U)-Total	mg/L	0.00010	<0.00010
Vanadium (V)-Total	mg/L	0.0050	<0.0050
Zinc (Zn)-Total	mg/L	0.0050	<0.0050
Zirconium (Zr)-Total	mg/L	0.00010	<0.00010