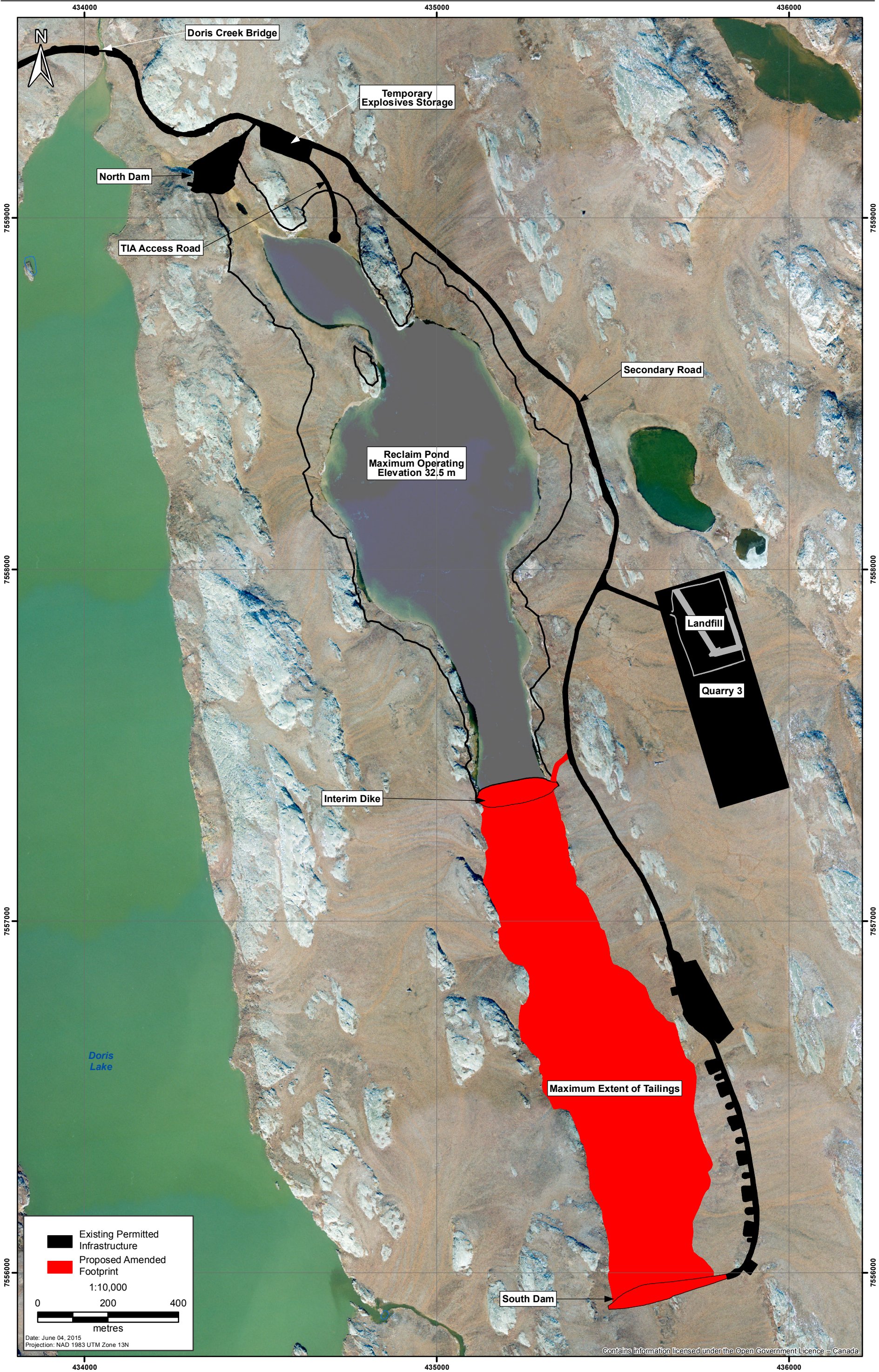


Figure 5

Doris North Permitted Footprint and Proposed Changes, Tailings Impoundment Area



Package 1
Project Summary and Submission Outline

P1-3 Schedule for Implementation

SCHEDULE FOR IMPLEMENTATION



		Activity	Start	Finish
REGULATORY		Submit Application to Amend 2AM-DOH1323 and PC 003	Q2 2015	
		Regulatory Review: 2AM-DOH1323 and PC 003	Q2 2015	Q2 2016
		Amended 2AM-DOH1323 and PC 003 Received		Q2 2016
		2AM-DOH1323 Expires		Q3 2023
		Submit Application for 2AR-DOHXXXX	Q3 2022	
		Regulatory Review: 2AR-DOHXXXX	Q3 2022	Q4 2023
		2AR-DOHXXXX Received		Q4 2023
PROJECT LIFE	OPERATIONS	Mining Under 2AM-DOH1323 and Project Cert. 003	Q2 2015	Q2 2016
		Mining Under 2AM-DOH1323 and Project Cert. 003-Amendment 1	Q3 2016	Q4 2020
		Mill design & construction	Q1 2015	Q4 2016
		Mill Production	Q1 2017	Q4 2020
		Tailings Deposition	Q4 2016	Q4 2020
		Effluent discharge to Roberts Bay	Q4 2016	Q4 2020
	CLOSURE	Reclamation	Q1 2022	Q3 2022
		Dewater TIA to Roberts Bay	Q1 2021	Q4 2022
		TIA Refill	Q1 2023	Q3 2027
		Commence Natural Discharge from TIA	Q4 2027	
	POST-CLOSURE	Monitoring and Management	Q1 2021	Q1 2030
		Monitoring and Management	Q2 2030	Q4 2030

Package 1
Project Summary and Submission Outline

P1-4 Regulatory Submission Outline



Revisions to TMAC Resources Inc. - Amendment Application No. 1
of Project Certificate No. 003 and Water Licence 2AM-DOH1323

Regulatory Submission Outline

PACKAGE 1

Project Summary and Submission Outline

- P1-1 Plain Language Summary (translated)
- P1-2 Maps
- P1-3 Schedule for Implementation
- P1-4 Regulatory Submission Outline

PACKAGE 2

Project Description

- P2-1 Project Description with Executive Summary (translated)

PACKAGE 3

NIRB and NWB Application Documents

- P3-1 NIRB Amendment Application Documents
- P3-2 NWB Amendment Application Documents
- P3-3 NPC Conformity Determination

PACKAGE 4

Environmental Effects Assessment

- P4-1 Environmental Effects Assessment

PACKAGE 5

Management and Other Plans

- P5-1 Air Quality Management Plan
- P5-2 Interim Closure and Reclamation Plan
- P5-3 Water Management Plan
- P5-4 Waste Rock and Ore Management Plan

PACKAGE 6

Engineering and Design Documents

- P6-1 Doris Central Vent Raise Pad and Access Road
- P6-2 Doris Connector Vent Raise Pad and Access Road
- P6-3 Groundwater Inflow and Quality Model
- P6-4 Landfill
- P6-5 Reclamation and Security
- P6-6 Roberts Bay Discharge System: Water Management Options
- P6-7 Roberts Bay Discharge System: Surface Infrastructure
- P6-8 Roberts Bay Discharge System: Pump and Pipe Requirements
- P6-9 Roberts Bay Expanded Laydown Pads
- P6-10 Site-Wide Water and Load Balance
- P6-11 Storage Pad U
- P6-12 Tailings Geochemistry
- P6-13 Tailings Management System
- P6-14 Waste Rock and Ore Geochemistry, Static Testing
- P6-15 Waste Rock and Ore Geochemistry, Kinetic Testing

PACKAGE 7

Proponent Information

- P7-1 Financial Security
- P7-2 List of Officers
- P7-3 Certificate of Incorporation