

Date: Sept. 13, 2016

Exhibit No.: 5



**Nunavut Water Board Public Hearing
Doris Project Water Licence Amendment
2AM-DOH1323**

September 13-14, 2016 – Cambridge Bay, NU



TMAC Resources

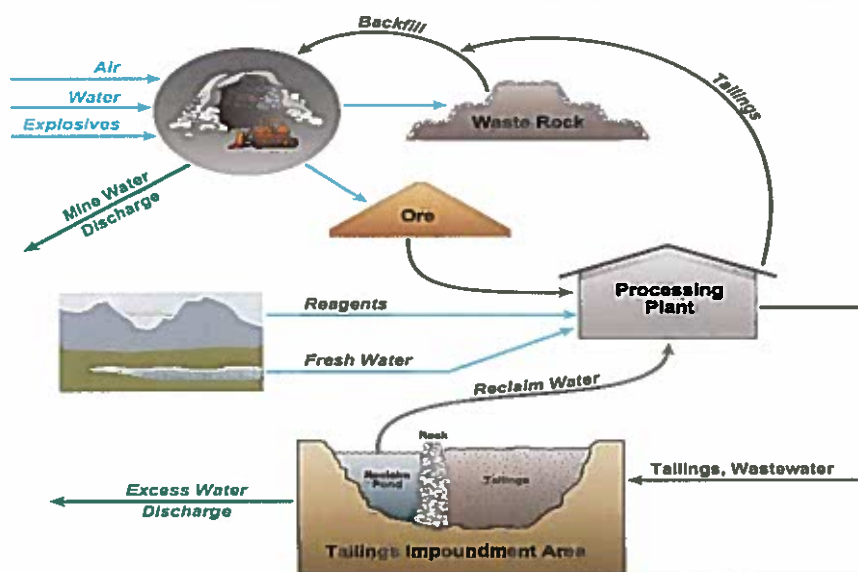




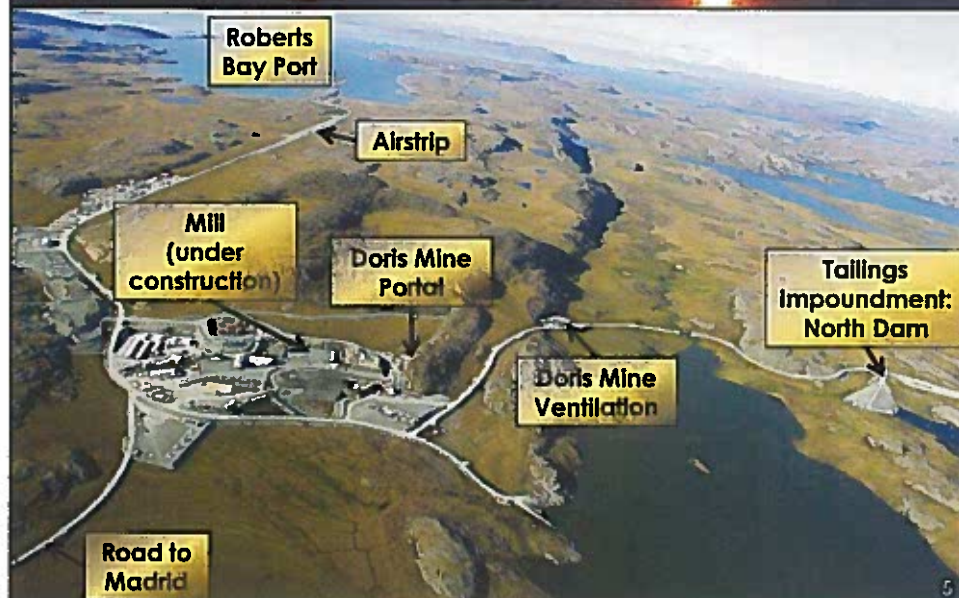
Doris Gold



Doris Mine



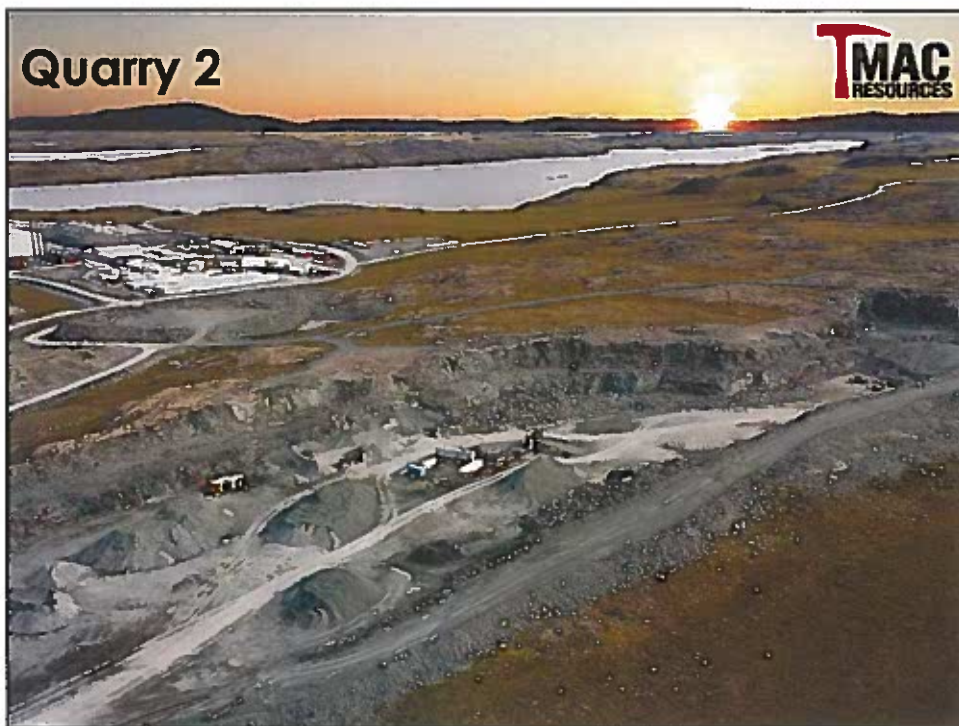
Doris Mine Site



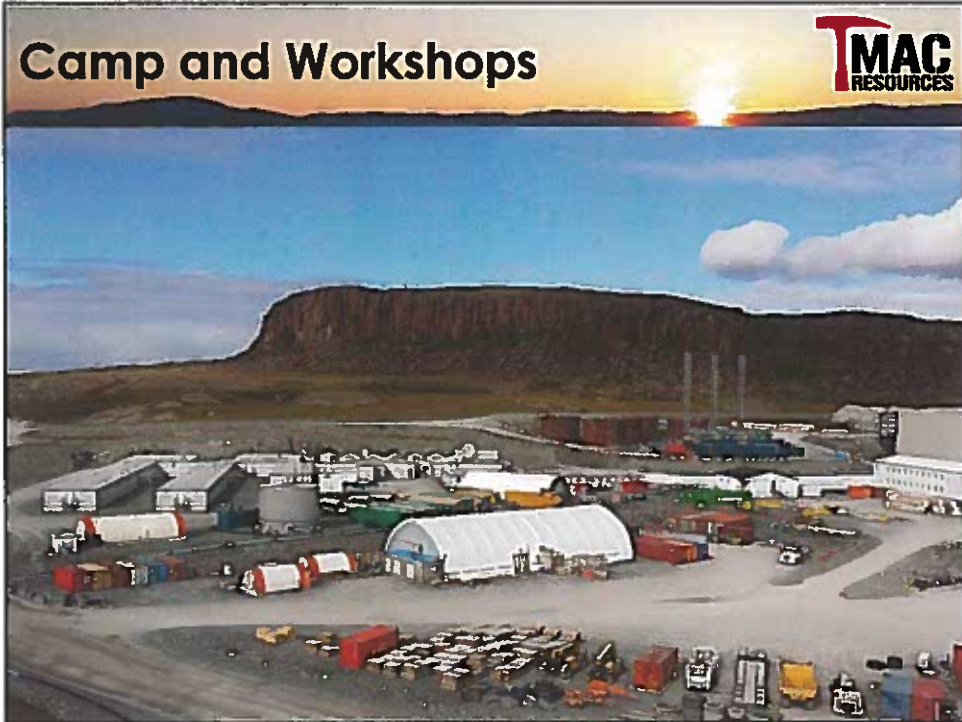
Roberts Bay Port



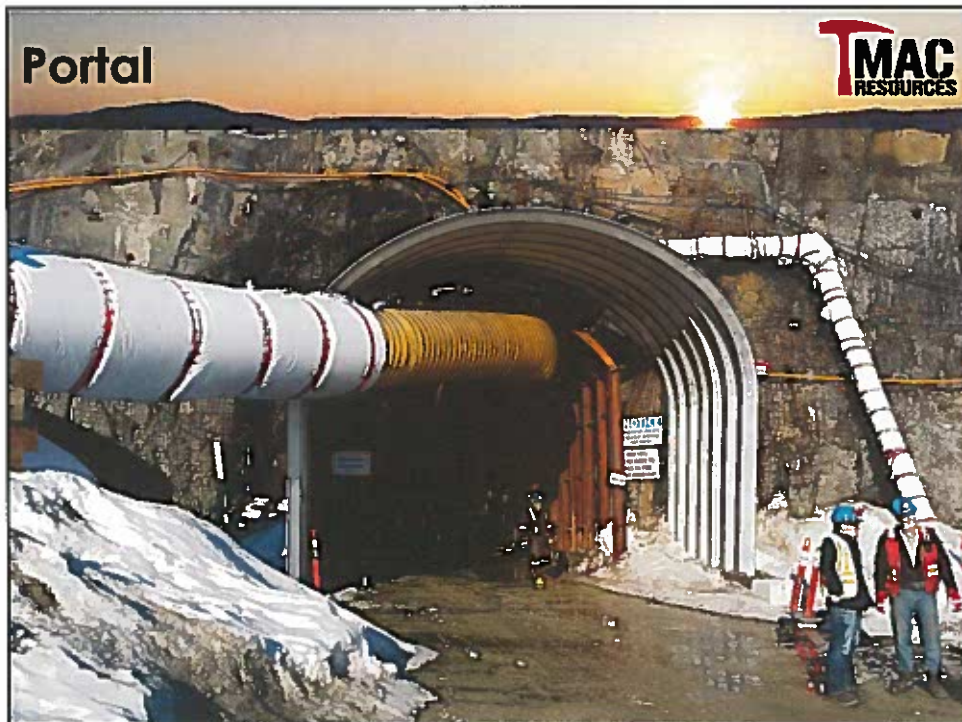
Airstrip**Main Laydown Area**

Quarry 2**Mill (under construction)**

Camp and Workshops



Portal



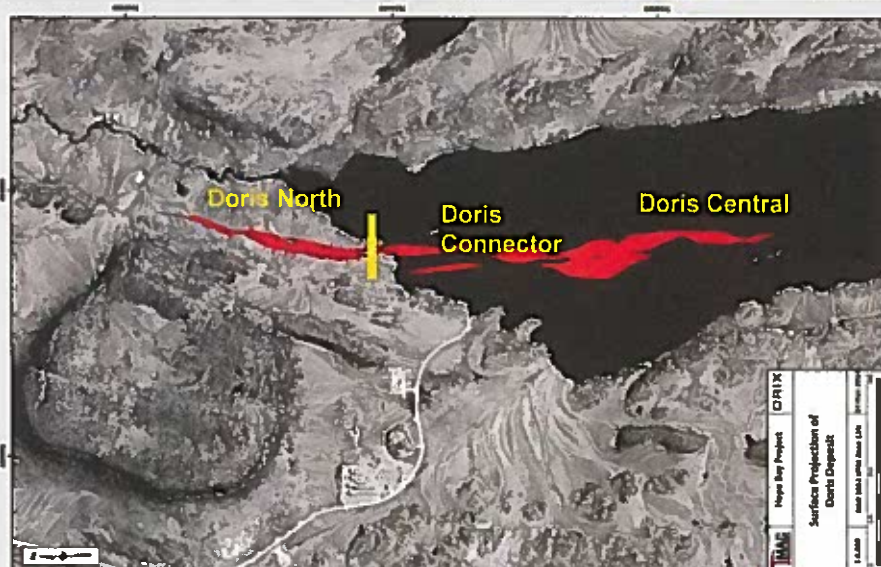
Tailings Impoundment Area

TMAC
RESOURCES



Doris Underground Mine

TMAC
RESOURCES



TMAC & the NWB



Change Approvals to:

- Mine more gold
- Mine in a new area
- Mine longer

*NIRB recommends
changes to Project
Certificate*

**NWB decision
regarding water
licence**



15

Doris Mine & TMAC



1988 - 1999

• Explored



1999 - 2007

• Permitted



2007 - 2013

• Built



2013 - 2016

• **Build & Operate**

TMAC, the NWB, Parties and the Public



- **TMAC** conducts studies
- **TMAC** submits Application
 - Project changes
 - Effects of changes
- **NIRB** and **Parties** review, NIRB makes recommendation to issue Project Certificate
- **TMAC, NWB** and **Parties** discuss water, waste management and closure issues, work together to resolve
- **TMAC, NWB and Parties** discuss remaining issues with the Public
- **NWB** decision regarding water licence



- TMAC talking with the NWB, Parties and the Public

17

TMAC – KIA Agreements



TMAC to provide:

- Agreements
- Payments

KIA to provide:

- Access
- Advice



18

Benefits for Kitikmeot & Inuit



- IIBA with KIA
- Jobs onsite
- Inuit Employment Targets
- \$550 million to be spent
- Preferred Kitikmeot-based businesses
- Royalties and fees paid to KIA & NTI
- Taxes paid to the GN & Canada



Summary of Project Changes



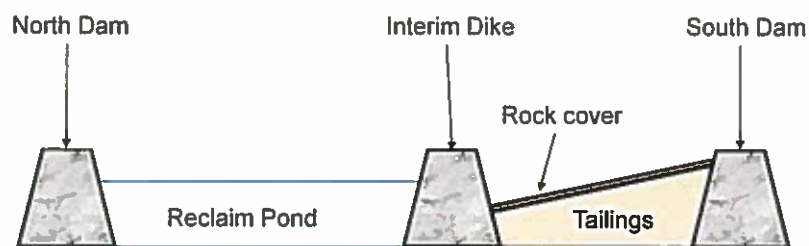
- **Mine**
 - Mine life
 - Ore
 - Ventilation
- **Mill**
 - New mill
 - Cyanide removal



Summary of Project Changes



- **Tailings**
 - Volume
 - Placement
 - Containment
- **Waste Rock**
 - Volume
 - Disposal



21

Summary of Project Changes

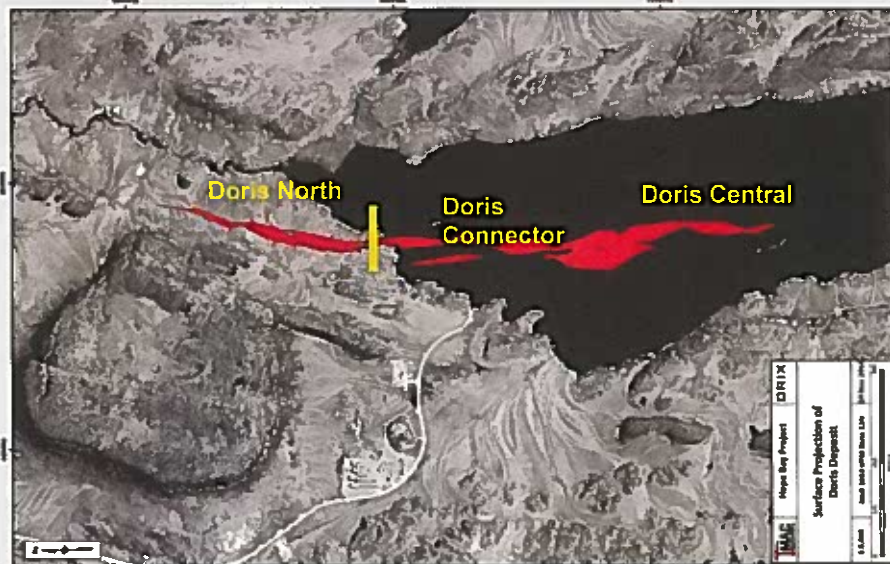


- **Water Management**
 - Surface and groundwater
 - Collection
 - Disposal
- **Waste Management**
 - Landfill



22

Summary of Project Changes

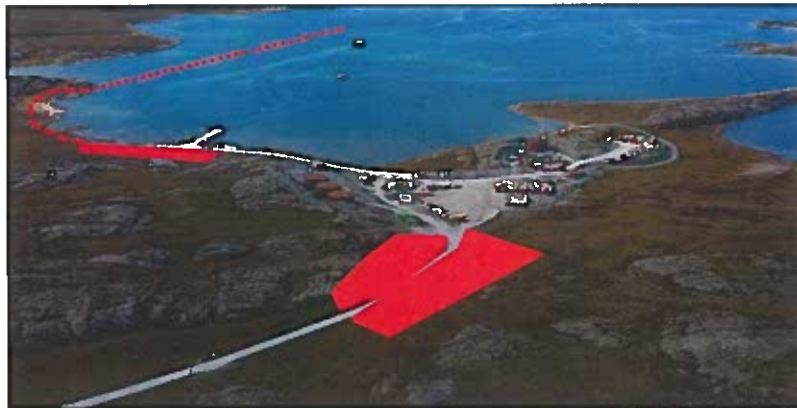


3

Summary of Project Changes



- Laydown
 - Work Area
- Camp
 - Size
- Explosives
 - Storage
- Closure
 - Cost estimate



24

Monitoring, Mitigation and Management



- Continue to implement existing measures
- Revised Plans:
 - Water Management Plan
 - Aquatic Effects Monitoring Plan
 - Waste Rock and Ore Management Plan
- New Plans
 - Tailings Area Operations, Maintenance and Surveillance Manual
 - Groundwater Management Plan

Reviewed by NWB and parties, revised based on discussion

25

Issues Resolved in NWB Process



Water

- | | |
|------------------------------------|---------------------------------------|
| - Site-wide water and load balance | - Marine water quality objectives |
| - Groundwater quality and volume | - Water and sewage treatment |
| - Roberts Bay discharge | - Doris Lake and Outflow water levels |
| - Aquatic monitoring | - Water crossings |
| - Effluent discharge criteria | |

Issues Resolved in NWB Process



Waste

- Tailings management and monitoring
- Interim Dike filter
- Dust suppression at Tailings Area
- Waste rock use
- Underground disposal of impacted materials

Issues Resolved in NWB Process



Closure

- Tailings area water quality
- Groundwater quality
- Tailings cover
- Security cost estimate
- Interim Closure and Reclamation Plan

Issues Resolved in NWB Process



Management Plans

- Aquatic Effects Monitoring Plan
- Groundwater Management Plan
- Tailings Management Plan
- Water Management Plan
- Waste Rock and Ore Management Plan

Next Steps



- NWB Public Hearing
- Complete construction
- New Water Licence and Project Certificate granted
- Pour first gold – Jan 2017



Thank You - Quana

