




Boston-Madrid Project


Nunavut Water Board Final Hearing: Community Session

TMAC Resources Inc.



Cambridge Bay, Nunavut | October 2018





Hope Bay Project Layout




Approved Doris Project (2AM-DOH1323)





Hope Bay Project Layout

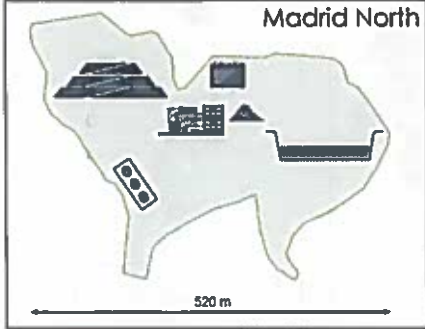





Madrid- Boston Project Highlights

| Madrid and Boston Highlights | |
|------------------------------|--|
| Mining | <ul style="list-style-type: none"> Underground mining and crown pillar recovery with waste rock stored above ground temporarily and then put back into the underground mines. |
| Processing | <ul style="list-style-type: none"> Nominal capacity of 6,000 tonnes of ore processed per day |
| Gold Production | <ul style="list-style-type: none"> Gold production at Doris and Boston. Concentrates produced at Madrid North |
| Transportation | <ul style="list-style-type: none"> Sealift arrives at Roberts Bay and utilize cargo dock and jetty Gold bars flown out to market from Doris and Boston Road connecting Madrid and Boston to Doris and Roberts Bay |
| Employment | <ul style="list-style-type: none"> Fly in-fly out operation from Edmonton and Kitikmeot 870 workers during peak operations (for approximately 14 years) |
| Economic Benefit | <ul style="list-style-type: none"> Royalties, mineral taxes and other payments of approximately \$500 million over the life of the Hope Bay Project for Canada, Nunavut, KIA and NTI (excluding Doris) |



Hope Bay Project Layout

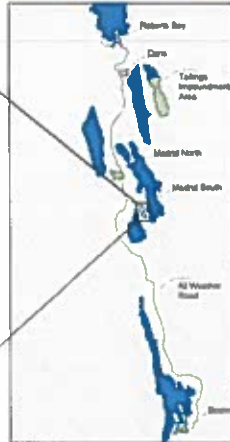



NUNAVUT WATER BOARD

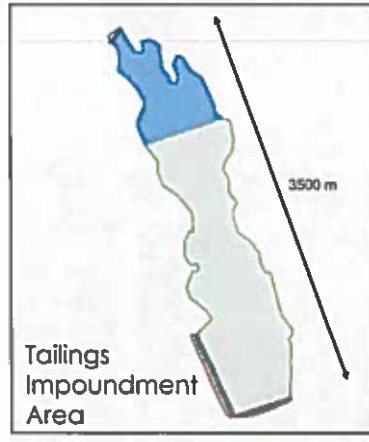
Date: October 24, 2018

Exhibit No.: # 7

Hope Bay Project Layout



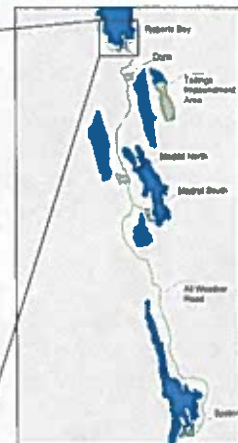
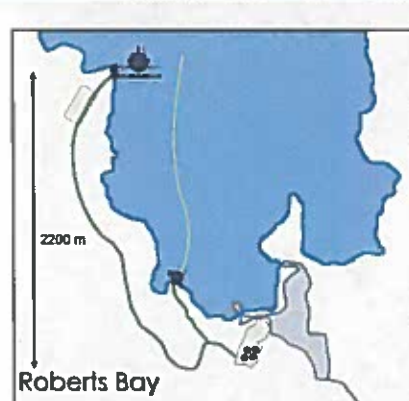
Hope Bay Project Layout



Hope Bay Project Layout



Hope Bay Project Layout



Hope Bay Project Layout

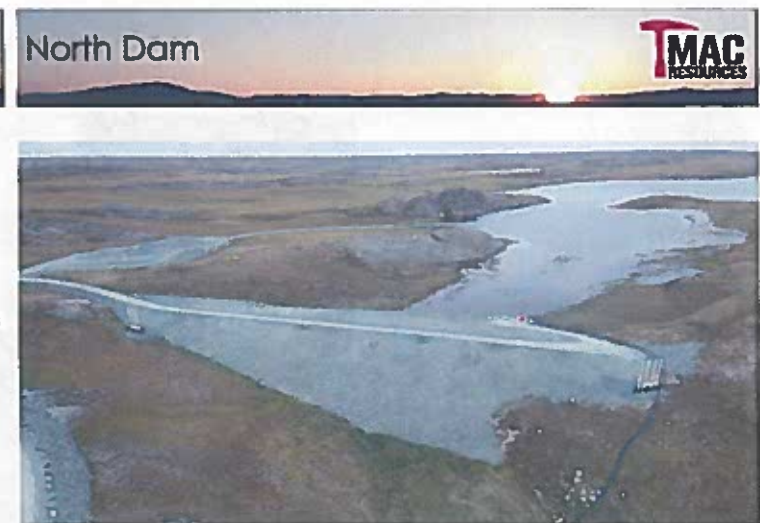
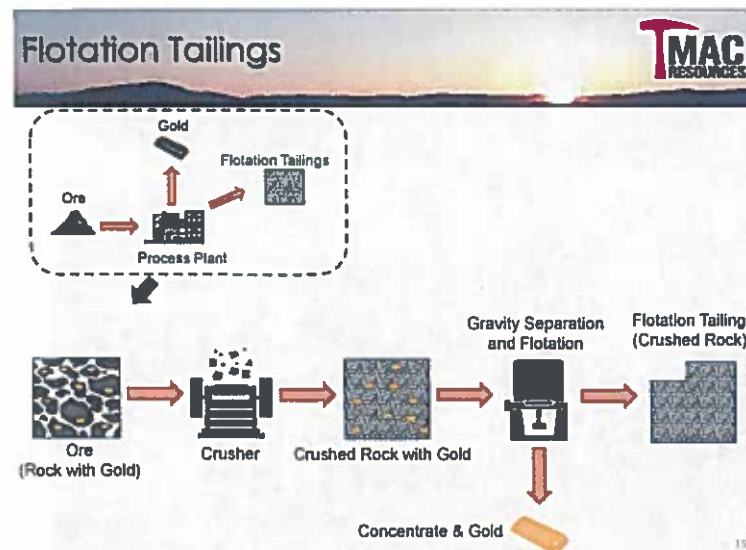
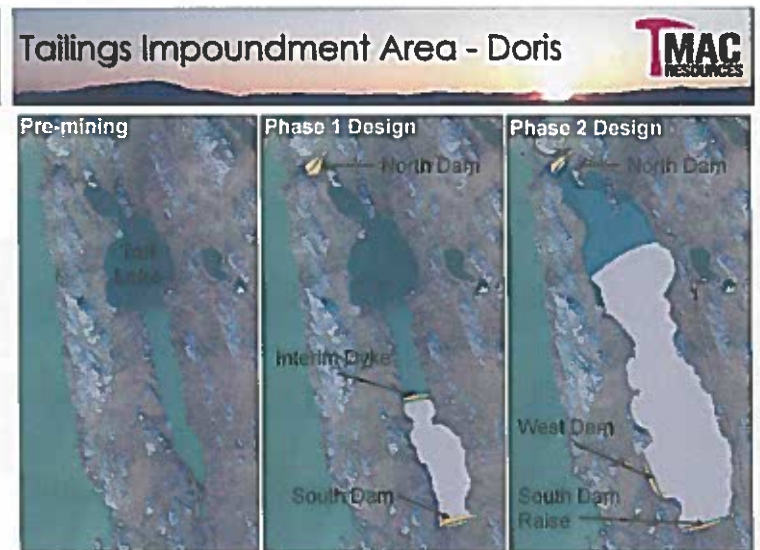
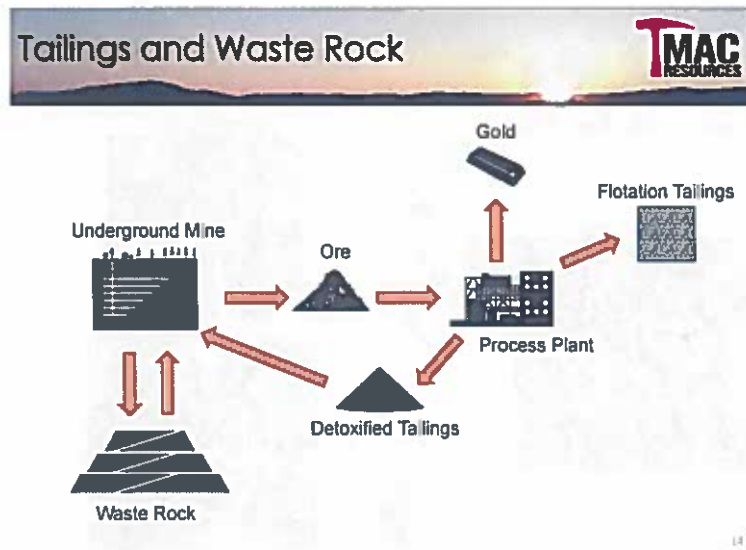
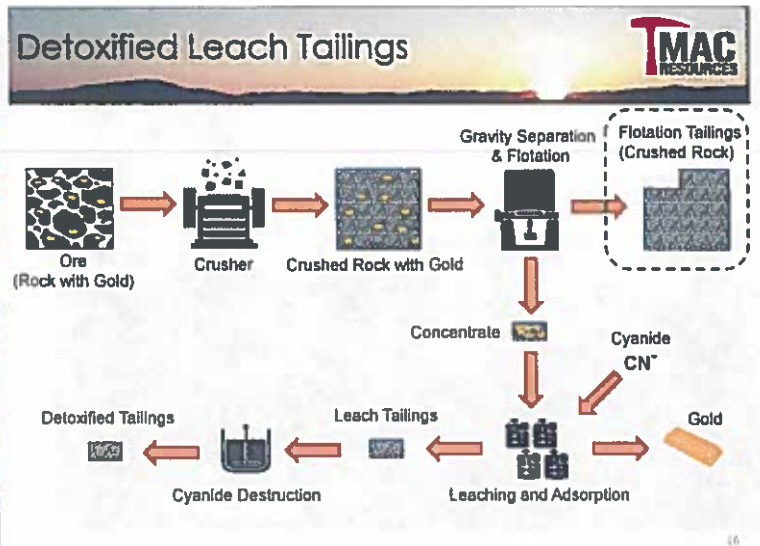
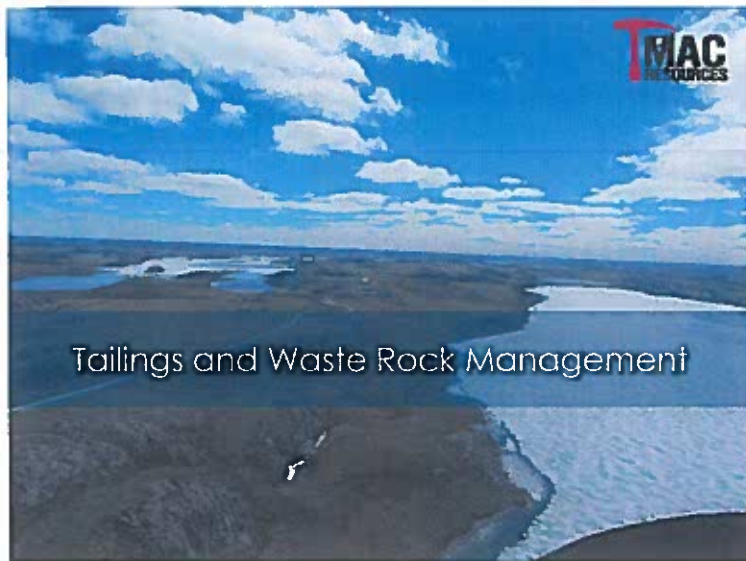


Closure and Reclamation



- Doris-Madrid Interim Closure and Reclamation Plan was updated
- Boston Conceptual Closure and Reclamation Plan was developed
- Overall objectives of closure planning at Hope Bay:
 - Physical Stability
 - Chemical Stability
 - Future use and aesthetics
- Planning provides basis to estimate financial security

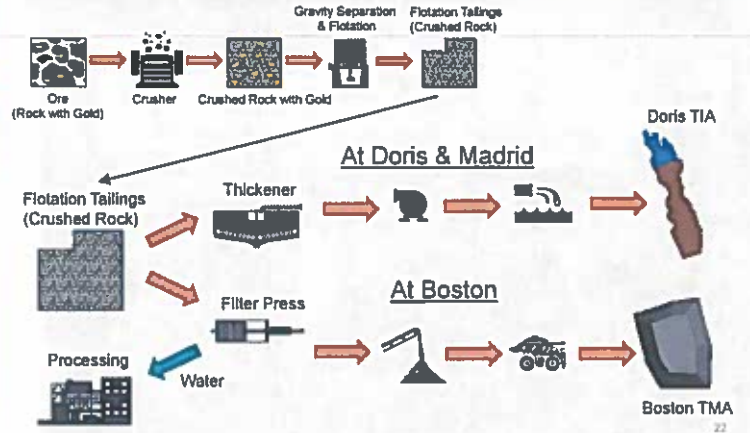




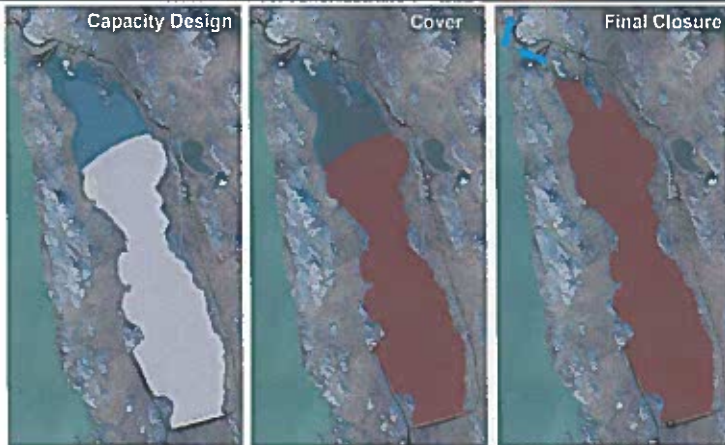
South Dam



Tailings



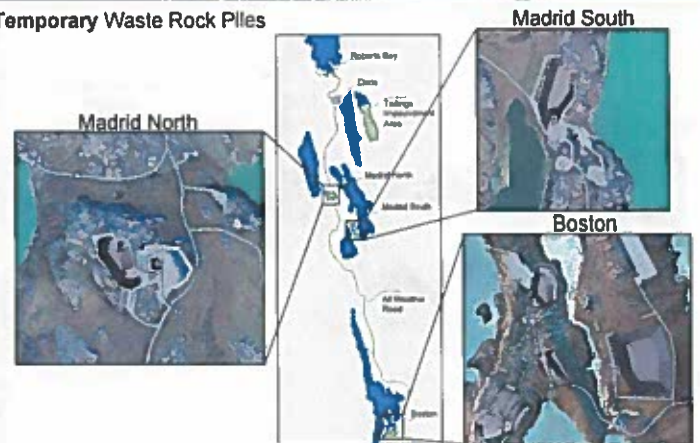
Tailings Impoundment Area - Closure



Summary of Waste Rock Management



Temporary Waste Rock Piles



Tailings Management Area - Boston



- Filtered tailings
- Trucks, Dozers, Compactors
- Stackable and compactable
- Similar to:
 - Raglan
 - Fort Knox
 - Pogo



Doris Water Management



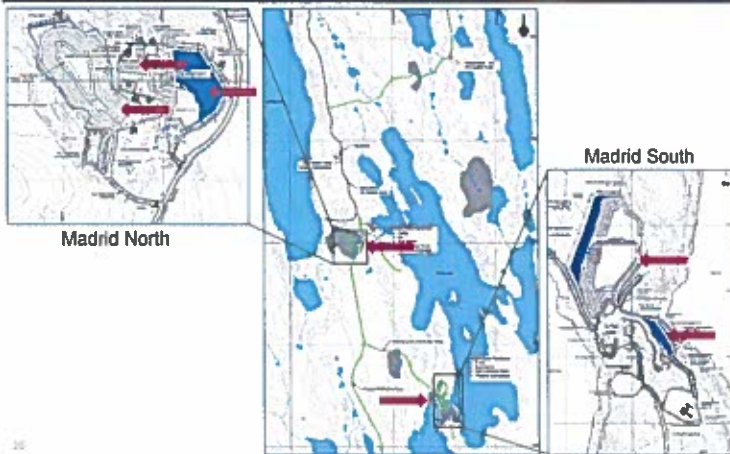
25



Freshwater Environment



Madrid Site Layout



26

Freshwater Environment



Madrid-Boston Phase 2

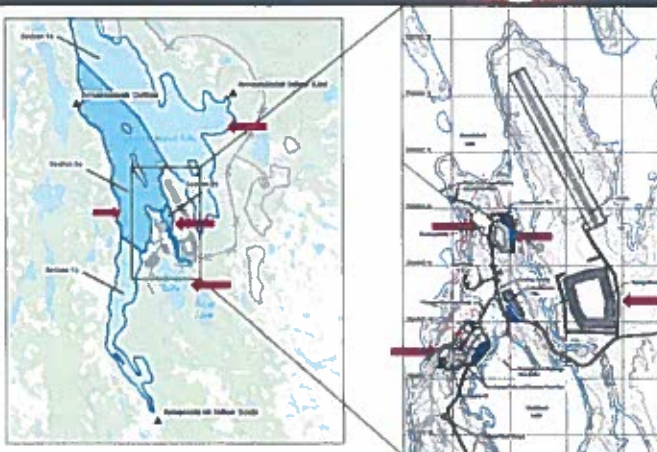
Valued Ecosystem Components:

- Surface Hydrology
- Surface Water Quality
- Sediment Quality
- Fish
 - Fish Community
 - Fish Habitat

➤ No Significant Residual Effects of Project on Freshwater Environment

29

Boston Site Layout and Aimaokatalok Lake



27

Freshwater Environment – Monitoring



Potential effects on the Freshwater Environment will be monitored:

- Aquatic Effect Monitoring Program
- Environmental Effects Monitoring under the Metal and Diamond Mining Effluent Regulations
- Surveillance Network Program under applicable Type A water licences
- Fisheries Act Authorizations and Offsetting

30

Thank You, Questions

