

REQUEST FOR INFORMATION

RFI NUMBER	NL-RFI-037			
ISSUE DATE (YY/MM/DD)	March 17, 2011			
PRIORITY	H	M	X	L
REQ'D RESPONSE DATE	March 24, 2011			

Hope Bay Mining Project

Subject:	Doris North Land Farm Clarifications	Project Zone/Area:	Doris North
Company:	Nuna Logistics Ltd. (Nuna)	Station/Location:	Doris North Land Farm
Attention:	Jerry Graham/Doug Fielding cc. SRK	Discipline:	Civil

A/E:		Specification Number:	
Related Drawings:	SRK Doris North Land Farm IFC Package	Related Documents:	

Related WBS Code	3DFB1946	WBS Code Description:	Land Farm

Information Request/Description of Issue/Approval Required:

Nuna has completed a review of the IFC drawing package in conjunction with Execution Plan development. The following issues have been identified:

- 1) The Material Specifications table on drawing LF-07 indicates "1-¾" crushed material" for berm surfacing. Nuna proposes using 1 ¼" or ¾" crushed material for this application.
- 2) Cross Section I-I' on drawing LF-07 indicates that the Access Ramps comprise ¾" crushed rock. Nuna proposes the following revision to decrease construction and material costs (see attached sketch):
 - a. Access Ramp Outside Containment Area – construct a foundation of "Select ROQ" topped with a 0.6 m deep surfacing layer of ¾" crushed rock.
 - b. Access Ramp Inside Containment Area – complete a "Select ROQ" fill on the completed overliner and cap with a 0.6 m deep surfacing layer of ¾" crushed rock.
- 3) The IFC package indicates 'unconsolidated fill material' below the foundation pad. Unconsolidated fill was leveled and placed in 2010 with an ROQ cap an average depth of 1 meter. Nuna proposes to remove the woven geotextile fabric below the foundation pad from the scope of construction.

Proposed Corrective Action:

Nuna requests authorization to proceed with the above proposals.

Originator: Jeff DePape

Print:

Sign:

2011-03-17

Date:

Cost Impact	<input type="checkbox"/> No	<input checked="" type="checkbox"/> Yes	Material and construction labour savings may be estimated with favourable response
Detailed Estimate attached	<input checked="" type="checkbox"/> No	<input type="checkbox"/> Yes	
Schedule Impact	<input type="checkbox"/> No	<input checked="" type="checkbox"/> Yes	Schedule may be improved by approximately 1 week.
Source for Communication	<input type="checkbox"/> Owner Change	<input type="checkbox"/> Clarification/Info	<input checked="" type="checkbox"/> Constructor Change
	<input type="checkbox"/> Vendor Change	<input type="checkbox"/> Designer Change	<input type="checkbox"/> Other

Note: RFI's are not authorized change documents and cannot be used to direct a change in contract requirements. If Newmont's response on the RFI has cost and/or schedule effect, it is the contractor's responsibility to immediately advise Newmont. Work undertaken without Newmont written authorization is at the contractor's risk and expense

☐ Corrective Action Approved

☐ Correct as Follows:

Response:

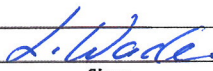
REQUEST FOR INFORMATION

RFI NUMBER	NL-RFI-037				
ISSUE DATE (YY/MM/DD)	March 17, 2011				
PRIORITY	H		M	X	L
REQ'D RESPONSE DATE	March 24, 2011				

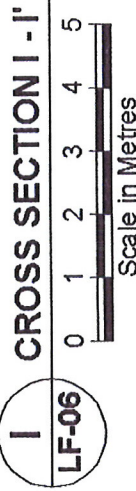
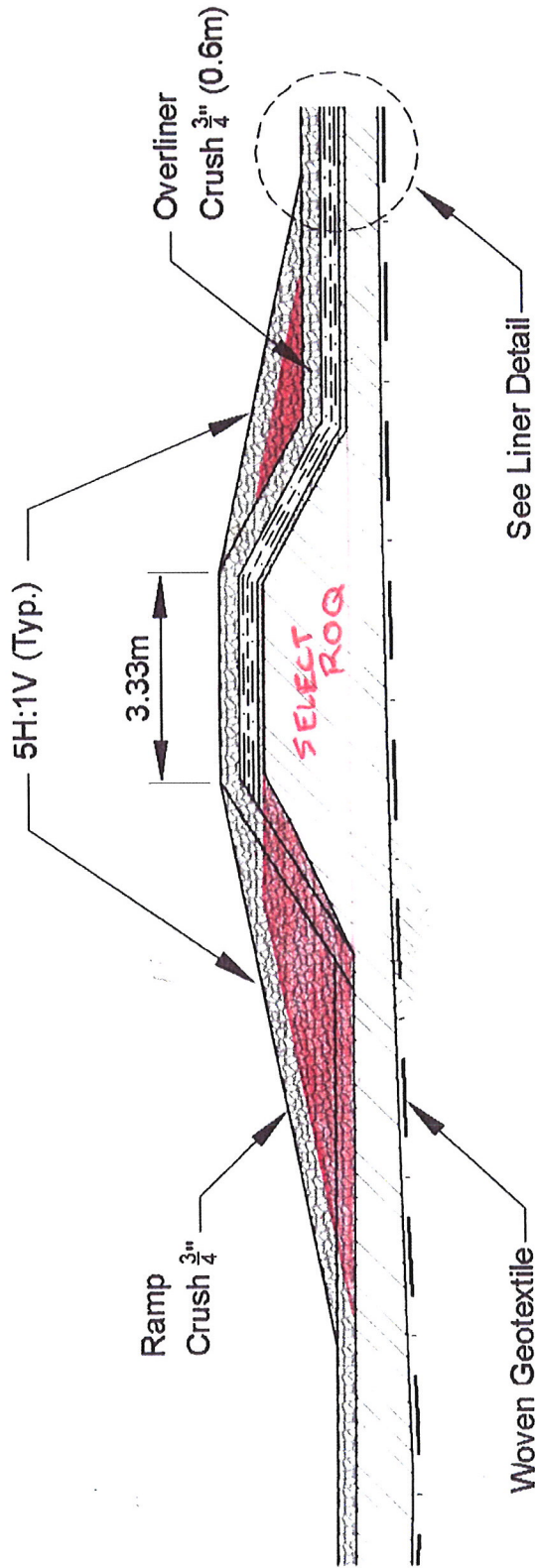
Hope Bay Mining Project

With respect to items 1 & 2a & b, the use of select ROQ instead of 6" jaw run has been previously discussed and is an acceptable alternative provided the existing lines as grades on the current IFC's are met. This was also mentioned in response to NL-RFI-033 [attached to this RFI].

With respect to item 3, the woven geotextile is to remain as the foundation conditions are unconsolidated variable fill material and the woven geotextile provides an additional measure of protection from differential settlement which can put the liner system at risk of failure.

Responsible Newmont Representative:	Lowell Wade		March 21, 2011
	<i>Print:</i>	<i>Sign:</i>	<i>Date:</i>

PROPOSED SUBSTITUTION OF 3/4" CRUSH
WITH "SELECT" ROQ.



REPLACE 3/4" WITH SELECT ROQ.

SRK Consult Engineers and Sc <small>Vancouver</small>		DESIGN: CB CHECKED: TG DRAWN: NV APPROVED: EMR REVIEW DATE:		FILE NAME: 1CH008.027-LF Rev 4 IFC.dwg																														
Original Drawings Stamped and Signed by Engineer		PROFESSIONAL ENGINEER'S STAMP																																
<table border="1"> <thead> <tr> <th>NO.</th> <th>DESCRIPTION</th> <th>CHK'D</th> <th>APP'D</th> <th>DATE</th> </tr> </thead> <tbody> <tr> <td>4</td> <td>ISSUED FOR CONSTRUCTION</td> <td>IM</td> <td>EMR</td> <td>08/09/10</td> </tr> <tr> <td>3</td> <td>ISSUED FOR CONSTRUCTION</td> <td>IM</td> <td>EMR</td> <td>04/27/10</td> </tr> <tr> <td>2</td> <td>ISSUED FOR COMMENT</td> <td>LW</td> <td>EMR</td> <td>02/08/10</td> </tr> <tr> <td>1</td> <td>WATER LICENSE REVIEW</td> <td>PM</td> <td>EMR</td> <td>02/01/10</td> </tr> <tr> <td>0</td> <td>ISSUED FOR REVIEW</td> <td>TG</td> <td>EMR</td> <td>12/17/09</td> </tr> </tbody> </table>		NO.	DESCRIPTION	CHK'D	APP'D	DATE	4	ISSUED FOR CONSTRUCTION	IM	EMR	08/09/10	3	ISSUED FOR CONSTRUCTION	IM	EMR	04/27/10	2	ISSUED FOR COMMENT	LW	EMR	02/08/10	1	WATER LICENSE REVIEW	PM	EMR	02/01/10	0	ISSUED FOR REVIEW	TG	EMR	12/17/09	REVISIONS		
NO.	DESCRIPTION	CHK'D	APP'D	DATE																														
4	ISSUED FOR CONSTRUCTION	IM	EMR	08/09/10																														
3	ISSUED FOR CONSTRUCTION	IM	EMR	04/27/10																														
2	ISSUED FOR COMMENT	LW	EMR	02/08/10																														
1	WATER LICENSE REVIEW	PM	EMR	02/01/10																														
0	ISSUED FOR REVIEW	TG	EMR	12/17/09																														

REQUEST FOR INFORMATION

RFI NUMBER	NL-RFI-033
ISSUE DATE (YY/MM/DD)	March 4, 2011
PRIORITY	H <input checked="" type="checkbox"/> X <input type="checkbox"/> M <input type="checkbox"/> L <input type="checkbox"/>
REQ'D RESPONSE DATE	March 11, 2011

Hope Bay Mining Project

Subject:	Landfarm Material Variance	Project Zone/Area:	Doris North / Doris
Company:	Nuna Logistics Ltd. (Nuna)	Station/Location:	Landfarm
Attention:	Doug Fielding/Jerry Graham	Discipline:	Civil

AFE:	n/a	Specification Number:	
Related Drawings:	SRK Landfarm IFC Package	Related Documents:	
	SRK Dwg No. LF-07		

Related WBS Code	n/a	WBS Code Description:	n/a

Information Request/Description of Issue/Approval Required:

Upon reviewing the engineered Issued for Construction drawings for the Doris Landfarm, Nuna has identified the ability to reduce project costs by varying the construction materials specified. Attached to this RFI is SRK Dwg No. LF-07, marked up to reflect the suggested material substitutions. Specifically, Nuna is suggesting that all 6" crushed material be substituted for a 'Select ROQ' material. Using 'Select ROQ' will eliminate the requirement to produce anymore 6" jaw-run this year decreasing the construction costs. Also, Nuna suggests that the compacted ¾" underliner layer lift thickness be increased from 0.1m to 0.15m to correct any undulations on the underlying 'Select ROQ' foundation pad. All ¾" material for this project will be sourced from existing stockpiles onsite produced in the 2010 crushing program, and therefore thickening this underliner layer will not increase construction costs.

Proposed Corrective Action:

Nuna requests that JDS/SRK review this request, along with the marked-up drawing attached, and provide acceptance to proceed with this substitution. Nuna requests that this information be provided by no later than March 11th so that manpower can be properly schedule should we be required to crush 6" jawrun.

Originator: KEVIN OAKES

Print:


Sign:

Mar 4, 2011

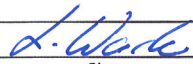
Date:

Cost Impact	<input type="checkbox"/> No	<input checked="" type="checkbox"/> Yes	Construction costs in 2011 will be decreased should this suggestion be accepted
Detailed Estimate attached	<input checked="" type="checkbox"/> No	<input type="checkbox"/> Yes	
Schedule Impact	<input type="checkbox"/> No	<input checked="" type="checkbox"/> Yes	Proceeding with 6" jawrun will extend the 2011 crushing program
Source for Communication	<input type="checkbox"/> Owner Change	<input type="checkbox"/> Clarification/Info	<input checked="" type="checkbox"/> Constructor Change
	<input type="checkbox"/> Vendor Change	<input type="checkbox"/> Designer Change	<input type="checkbox"/> Other

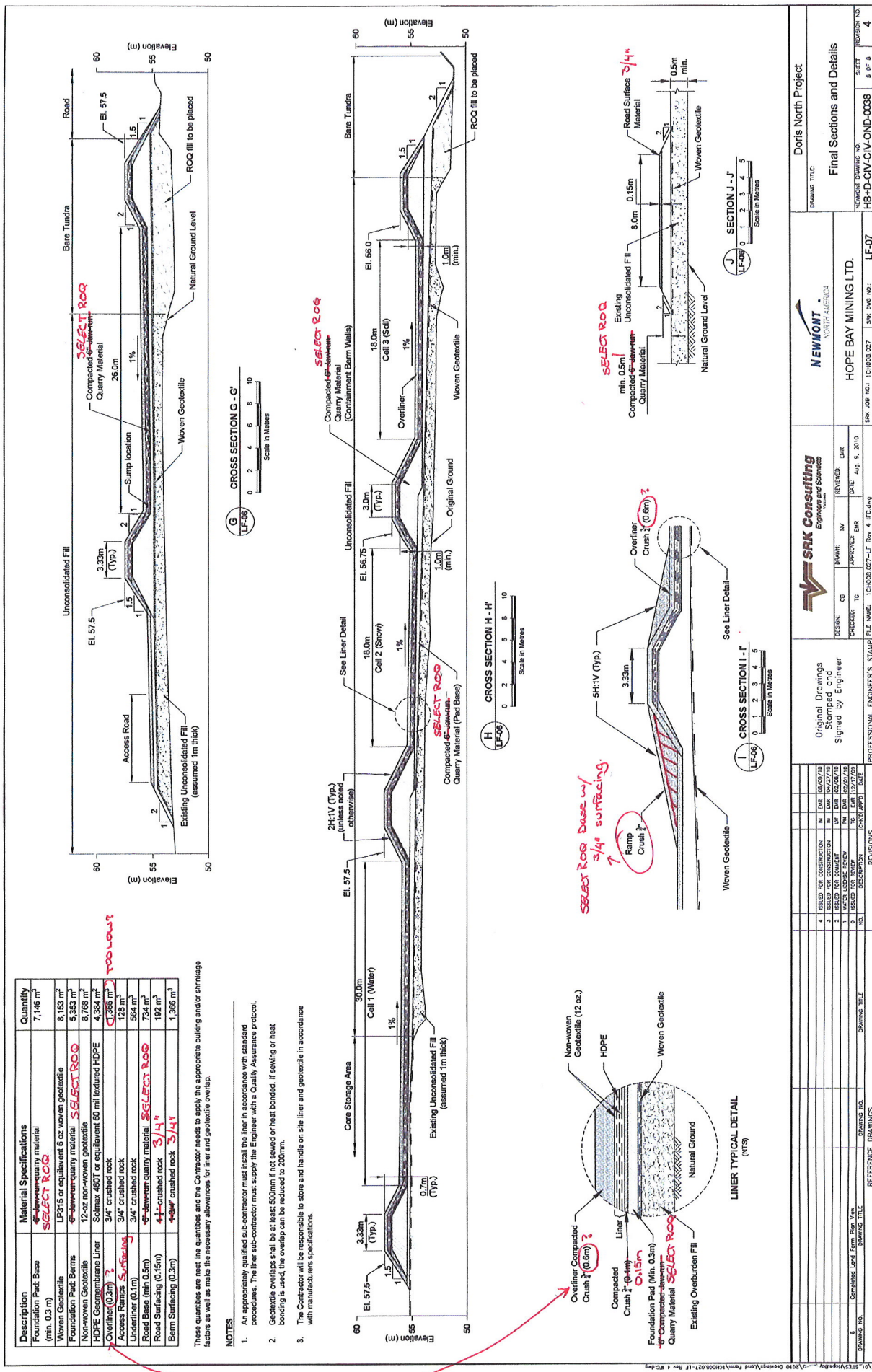
Note: RFI's are not authorized change documents and cannot be used to direct a change in contract requirements. If Newmont's response on the RFI has cost and/or schedule effect, it is the contractor's responsibility to immediately advise Newmont. Work undertaken without Newmont written authorization is at the contractor's risk and expense

☐ Corrective Action Approved

☐ Correct as Follows:

Response:			
The use of select ROQ instead of 6" jaw run has been previously discussed and is an acceptable alternative provided the existing lines and grades on the current IFC's are met. The existing drawing package has been reviewed and approved by the KIA. If the lines and grades are changed, a new IFC drawing package must be issued. This would require a Change Order submitted by SRK to Newmont and the new IFC's would then have to be re-reviewed by the KIA before construction activities could start.			
Responsible Newmont Representative:	Lowell Wade		March 5, 2011
	Print:	Sign:	Date:

3/16/10



DRAWING NO.		REVISIONS	DRAWING TITLE	
6		CHANGES LATER / FROM REV. LINE	DRAWING NO.	
7		CHANGES LATER / FROM REV. LINE	DRAWING TITLE	
8		CHANGES LATER / FROM REV. LINE	DRAWING NO.	
9		CHANGES LATER / FROM REV. LINE	DRAWING TITLE	
10		CHANGES LATER / FROM REV. LINE	DRAWING NO.	
11		CHANGES LATER / FROM REV. LINE	DRAWING TITLE	
12		CHANGES LATER / FROM REV. LINE	DRAWING NO.	
13		CHANGES LATER / FROM REV. LINE	DRAWING TITLE	
14		CHANGES LATER / FROM REV. LINE	DRAWING NO.	
15		CHANGES LATER / FROM REV. LINE	DRAWING TITLE	
16		CHANGES LATER / FROM REV. LINE	DRAWING NO.	
17		CHANGES LATER / FROM REV. LINE	DRAWING TITLE	
18		CHANGES LATER / FROM REV. LINE	DRAWING NO.	
19		CHANGES LATER / FROM REV. LINE	DRAWING TITLE	
20		CHANGES LATER / FROM REV. LINE	DRAWING NO.	
21		CHANGES LATER / FROM REV. LINE	DRAWING TITLE	
22		CHANGES LATER / FROM REV. LINE	DRAWING NO.	
23		CHANGES LATER / FROM REV. LINE	DRAWING TITLE	
24		CHANGES LATER / FROM REV. LINE	DRAWING NO.	
25		CHANGES LATER / FROM REV. LINE	DRAWING TITLE	
26		CHANGES LATER / FROM REV. LINE	DRAWING NO.	
27		CHANGES LATER / FROM REV. LINE	DRAWING TITLE	
28		CHANGES LATER / FROM REV. LINE	DRAWING NO.	
29		CHANGES LATER / FROM REV. LINE	DRAWING TITLE	
30		CHANGES LATER / FROM REV. LINE	DRAWING NO.	
31		CHANGES LATER / FROM REV. LINE	DRAWING TITLE	
32		CHANGES LATER / FROM REV. LINE	DRAWING NO.	
33		CHANGES LATER / FROM REV. LINE	DRAWING TITLE	
34		CHANGES LATER / FROM REV. LINE	DRAWING NO.	
35		CHANGES LATER / FROM REV. LINE	DRAWING TITLE	
36		CHANGES LATER / FROM REV. LINE	DRAWING NO.	
37		CHANGES LATER / FROM REV. LINE	DRAWING TITLE	
38		CHANGES LATER / FROM REV. LINE	DRAWING NO.	
39		CHANGES LATER / FROM REV. LINE	DRAWING TITLE	
40		CHANGES LATER / FROM REV. LINE	DRAWING NO.	
41		CHANGES LATER / FROM REV. LINE	DRAWING TITLE	
42		CHANGES LATER / FROM REV. LINE	DRAWING NO.	
43		CHANGES LATER / FROM REV. LINE	DRAWING TITLE	
44		CHANGES LATER / FROM REV. LINE	DRAWING NO.	
45		CHANGES LATER / FROM REV. LINE	DRAWING TITLE	
46		CHANGES LATER / FROM REV. LINE	DRAWING NO.	
47		CHANGES LATER / FROM REV. LINE	DRAWING TITLE	
48		CHANGES LATER / FROM REV. LINE	DRAWING NO.	
49		CHANGES LATER / FROM REV. LINE	DRAWING TITLE	
50		CHANGES LATER / FROM REV. LINE	DRAWING NO.	
51		CHANGES LATER / FROM REV. LINE	DRAWING TITLE	
52		CHANGES LATER / FROM REV. LINE	DRAWING NO.	
53		CHANGES LATER / FROM REV. LINE	DRAWING TITLE	
54		CHANGES LATER / FROM REV. LINE	DRAWING NO.	
55		CHANGES LATER / FROM REV. LINE	DRAWING TITLE	
56		CHANGES LATER / FROM REV. LINE	DRAWING NO.	
57		CHANGES LATER / FROM REV. LINE	DRAWING TITLE	
58		CHANGES LATER / FROM REV. LINE	DRAWING NO.	
59		CHANGES LATER / FROM REV. LINE	DRAWING TITLE	
60		CHANGES LATER / FROM REV. LINE	DRAWING NO.	
61		CHANGES LATER / FROM REV. LINE	DRAWING TITLE	
62		CHANGES LATER / FROM REV. LINE	DRAWING NO.	
63		CHANGES LATER / FROM REV. LINE	DRAWING TITLE	
64		CHANGES LATER / FROM REV. LINE	DRAWING NO.	
65		CHANGES LATER / FROM REV. LINE	DRAWING TITLE	
66		CHANGES LATER / FROM REV. LINE	DRAWING NO.	
67		CHANGES LATER / FROM REV. LINE	DRAWING TITLE	
68		CHANGES LATER / FROM REV. LINE	DRAWING NO.	
69		CHANGES LATER / FROM REV. LINE	DRAWING TITLE	
70		CHANGES LATER / FROM REV. LINE	DRAWING NO.	
71		CHANGES LATER / FROM REV. LINE	DRAWING TITLE	
72		CHANGES LATER / FROM REV. LINE	DRAWING NO.	
73		CHANGES LATER / FROM REV. LINE	DRAWING TITLE	
74		CHANGES LATER / FROM REV. LINE	DRAWING NO.	
75		CHANGES LATER / FROM REV. LINE	DRAWING TITLE	
76		CHANGES LATER / FROM REV. LINE	DRAWING NO.	
77		CHANGES LATER / FROM REV. LINE	DRAWING TITLE	
78		CHANGES LATER / FROM REV. LINE	DRAWING NO.	
79		CHANGES LATER / FROM REV. LINE	DRAWING TITLE	
80		CHANGES LATER / FROM REV. LINE	DRAWING NO.	
81		CHANGES LATER / FROM REV. LINE	DRAWING TITLE	
82		CHANGES LATER / FROM REV. LINE	DRAWING NO.	
83		CHANGES LATER / FROM REV. LINE	DRAWING TITLE	
84		CHANGES LATER / FROM REV. LINE	DRAWING NO.	
85		CHANGES LATER / FROM REV. LINE	DRAWING TITLE	
86		CHANGES LATER / FROM REV. LINE	DRAWING NO.	
87		CHANGES LATER / FROM REV. LINE	DRAWING TITLE	
88		CHANGES LATER / FROM REV. LINE	DRAWING NO.	
89		CHANGES LATER / FROM REV. LINE	DRAWING TITLE	
90		CHANGES LATER / FROM REV. LINE	DRAWING NO.	
91		CHANGES LATER / FROM REV. LINE	DRAWING TITLE	
92		CHANGES LATER / FROM REV. LINE	DRAWING NO.	
93		CHANGES LATER / FROM REV. LINE	DRAWING TITLE	
94		CHANGES LATER / FROM REV. LINE	DRAWING NO.	
95		CHANGES LATER / FROM REV. LINE	DRAWING TITLE	
96		CHANGES LATER / FROM REV. LINE	DRAWING NO.	
97		CHANGES LATER / FROM REV. LINE	DRAWING TITLE	
98		CHANGES LATER / FROM REV. LINE	DRAWING NO.	
99		CHANGES LATER / FROM REV. LINE	DRAWING TITLE	
100		CHANGES LATER / FROM REV. LINE	DRAWING NO.	