



372 Bay Street
Suite 901
Toronto, Ontario
M5H 2W9
416-628-0216

July 25, 2014

Phyllis Beaulieu
Manager of Licensing
Nunavut Water Board
P.O. Box 119
Gjoa Haven, NU
X0B 1J0

Re: Water withdrawal from Doris Creek under Water Licence 2AM-DOH1323

Dear Ms Beaulieu,

In support of ongoing exploration activities surrounding the Doris North mine, TMAC is submitting this letter to request Board approval to use water from Doris Creek for drilling purposes.

Generally, water used for drilling purposes is obtained from lakes located near to the drill sites unless the Board approves stream water withdrawal.

A portion of the Doris North deposit is located beneath Doris Creek, making this an area of on-going mine related surface drilling. Drills in this area do not have easy access to lakes, due to distance and elevation differences, and would be best supplied with water directly from Doris Creek. Drill water withdrawal from Doris Creek would range from 0 – 20 m³/day, although peaks of up to 50 m³/day are possible. Usage from the creek would not present an impact to the creek, which has substantial flow rates, and would be counted against the currently permitted Doris North total water usage allotment as per 2AM-DOH1323.

Doris Creek is depicted in the attached figure. Doris Creek discharge averages about 225,000 m³/day during freshet, and declines to about 25,000 m³/day prior to freeze-up. Consequently, even at highest predicted usage (50 m³/day) and lowest creek flows (25,000 m³/day), drill water withdrawal quantities would not impact creek volume.

Please also recall that Doris Creek flows are currently supplemented by TMAC summer discharges from the Tail Lake Impoundment Area to Doris Creek. These discharges

contribute up to 10% additional water to Doris Creek above the natural creek hydrograph, as allowed under 2AM-DOH1323.

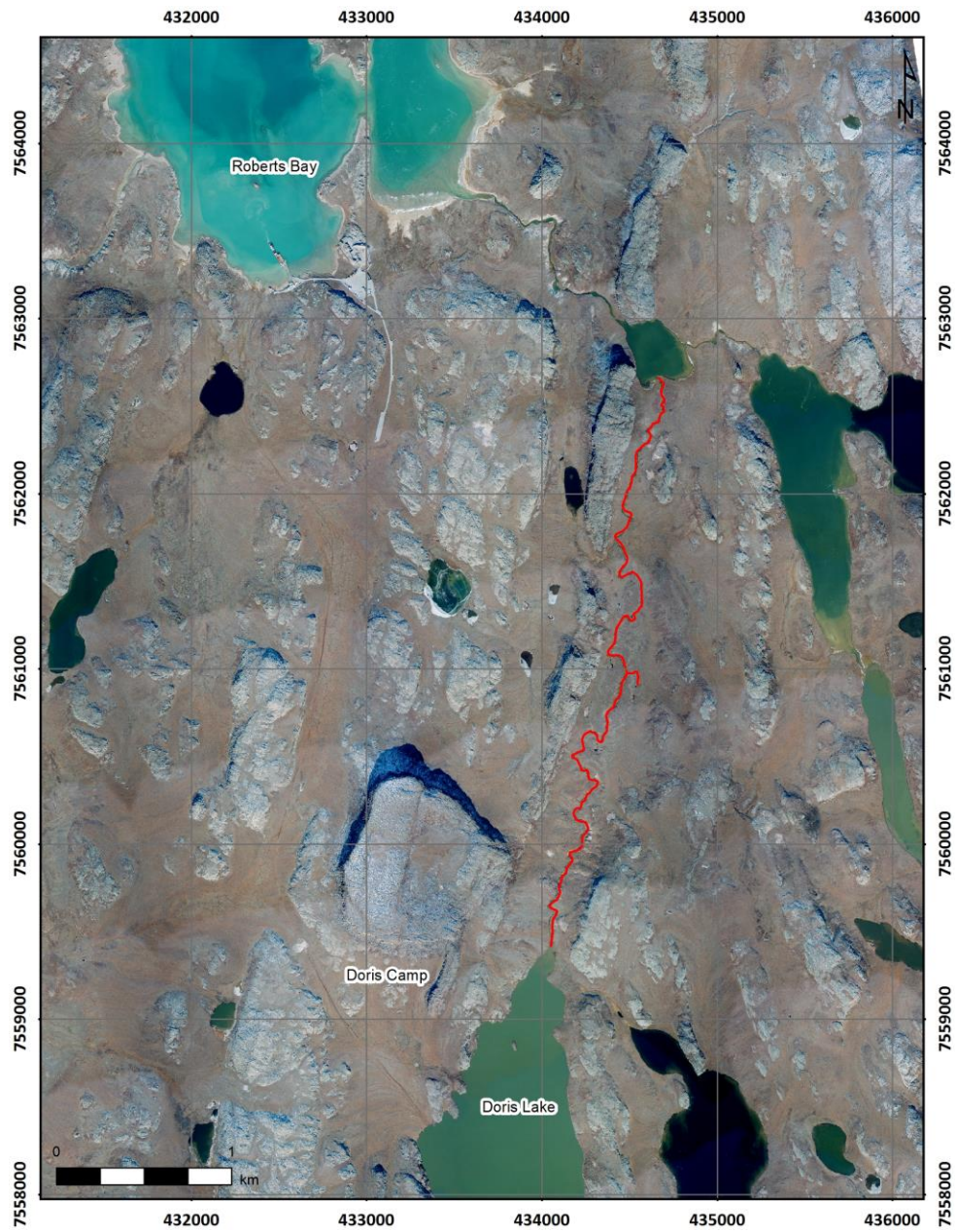
In conclusion, TMAC requests permission to withdraw water from Doris Creek to support surface drilling activities under 2AM-DOH1323.

Should there be any questions or concerns regarding this request, please contact Katsky Venter or John Roberts at Katsky.Venter@tmacresources.com or John.Roberts@tmacresources.com.

Yours sincerely,

Katsky Venter
Environmental Site Manager
Hope Bay Project

CC: David Honstein, NWB



Doris Creek, highlighted in red.