

March 29, 2012

Eva Paul
Water Resources Officer
Aboriginal Affairs and Northern Development Canada
Building 918, P.O. Box 100
Iqaluit, NU X0A 0H0
Eva.Paul@aadnc-aadnc.gc.ca

Stanley Anablak
Senior Lands Officer
KIA Lands Division
Kitikmeot Inuit Association
P.O. Box 360
Kugluktuk, NU X0B 0E0
Sanablak@qiniq.com

Dear Ms. Paul and Mr. Anablak,

Pursuant to the Doris North Type A Water Licence (2AM-DOH0713) (Part J Item 12f), Hope Bay Mining Ltd (HBML) is committed to monthly reporting of *“The volume of sewage sludge removed from the Sewage Treatment Plant and the locations or method of sewage sludge disposal during construction, operation and closure”*. HBML is writing this letter to inform you of its planned changes to HBML’s sewage sludge management. These changes will be implemented on or before April 30, 2012. These changes will be described in the updated Sewage Management Plan which will be submitted to the Nunavut Water Board for review and distribution shortly.

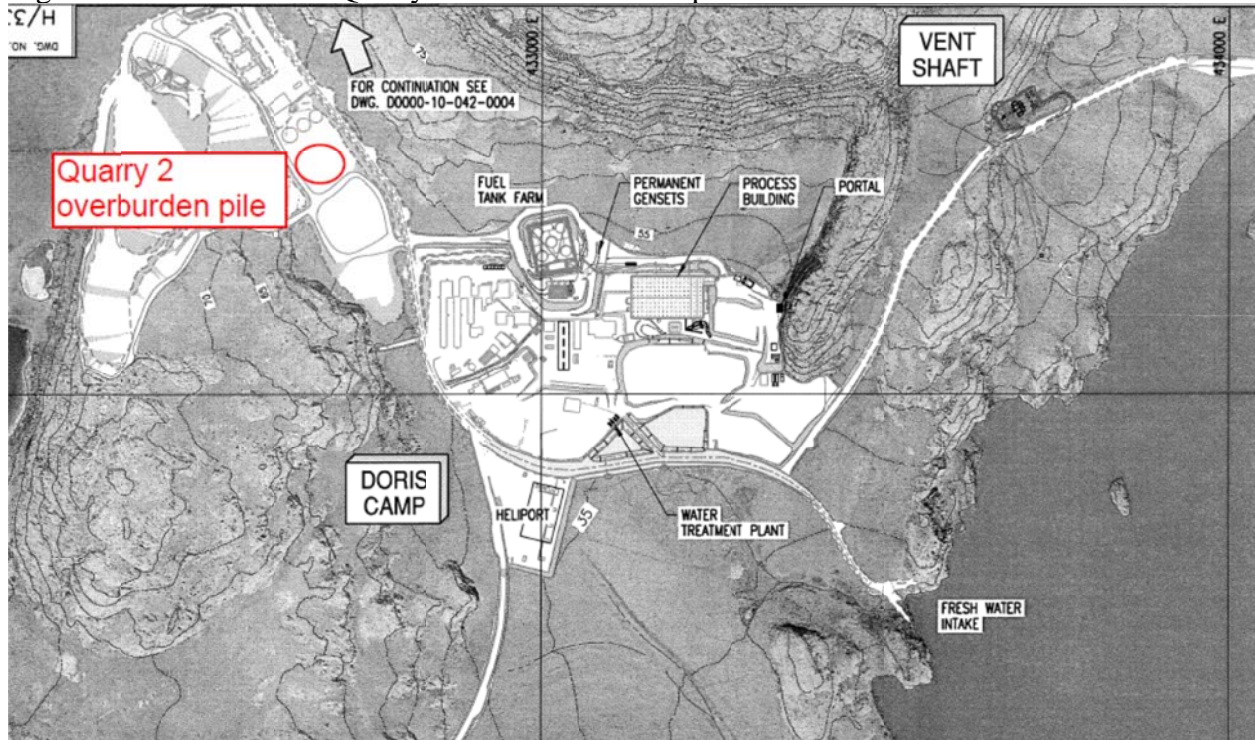
HBML is currently incinerating sewage sludge at Roberts Bay. HBML wishes to maintain the option of incinerating sewage sludge where appropriate, but also plans to proceed with encapsulating the sewage sludge in the overburden stockpile at Quarry 2 for future use in reclamation activities. Both Aboriginal Affairs and Northern Development Canada (AANDC) and Environment Canada have written public documents which are supportive of this practice. AANDC recommends that proponents consider land application of sewage for re-vegetation programs³. Environment Canada suggests that on-site disposal in a landfill, landfarm, or use as

³ INAC. 2007. Mine Site Reclamation Guidelines for the Northwest Territories.

reclamation material are acceptable options for disposal of sewage sludge produced in a sewage treatment facility⁴.

The sewage sludge will not be placed in any area where the sludge or runoff from the sludge could be deposited in fresh or marine waters. The selected locations for sewage sludge disposal do not pose a risk for contamination of any waterbodies. The Quarry 2 overburden pile is approximately 1 km from Doris Lake. The overburden piles are currently large, and are likely to have permafrost within them. HBML will bury the sewage sludge deep enough in the overburden to freeze and to prevent odours from attracting wildlife.

Figure 1. Location of the Quarry 2 Overburden Stockpile



As per the Type A Water Licence requirement, HBML will report the disposal location and method for all sewage sludge removed from the sewage treatment plant.

⁴ Environment Canada. 2009. Environmental Code of Practice for Metal Mines.

Please do not hesitate to contact me at 604-345-3122 or Angela.Holzapfel@Newmont.com, or Chris Hanks at 720-917-4489 or Chris.Hanks@Newmont.com.

Sincerely,

Angela Holzapfel
Manager of Environmental Compliance
Environment and Social Responsibility

cc. David Hohnstein, Phyllis Beaulieu, Nunavut Water Board