



95 Wellington Street West
Suite 1010, P.O. Box 44
Toronto, Ontario
M5J 2N7
416-628-0216

January 30, 2019

Derek Donald
Technical Advisor
Nunavut Water Board
P.O. Box 119
Gjoa Haven, NU,
X0B 1J0

Sent via Email: derek.donald@nwb-oen.ca

Re: Water License 2AM-DOH1335 – Notice of Modification – Development of ‘Sump 3’ at Doris

Dear Mr. Donald,

This letter represents TMAC Resources Inc (TMAC) written notification to the Nunavut Water Board (NWB) regarding the planned installation of a shallow groundwater sump in the Doris mine area. This notification is being provided to the NWB prior to commencement of work, as required under the Type A Water License (2AM-DOH1335). TMAC can confirm the following conditions are met, under 2AM-DOH1335 Part G Item 1:

- a) The Licensee has notified the Board in writing of such proposed modifications at least sixty (60) days prior to beginning the Modifications;
- b) Such Modifications do not place the Licensee in contravention of the License or the Act; and
- c) Such Modifications are consistent with the applicable terms and conditions of the NIRB Project Certificate No. 009.

TMAC plans to install an underflow interception sump (Sump 3) to enhance the existing water management system at the Doris site. The sump will be placed in the active layer on the tundra near the existing sumps. The location of Sump 3 (see Figure 1 below) is located at a distance greater than 31 meters from the ordinary high-water mark of any adjacent water body. Any water captured in the sump will be returned to the water management system via an automated float operated pump, similar to Sump 1 and Sump 2.

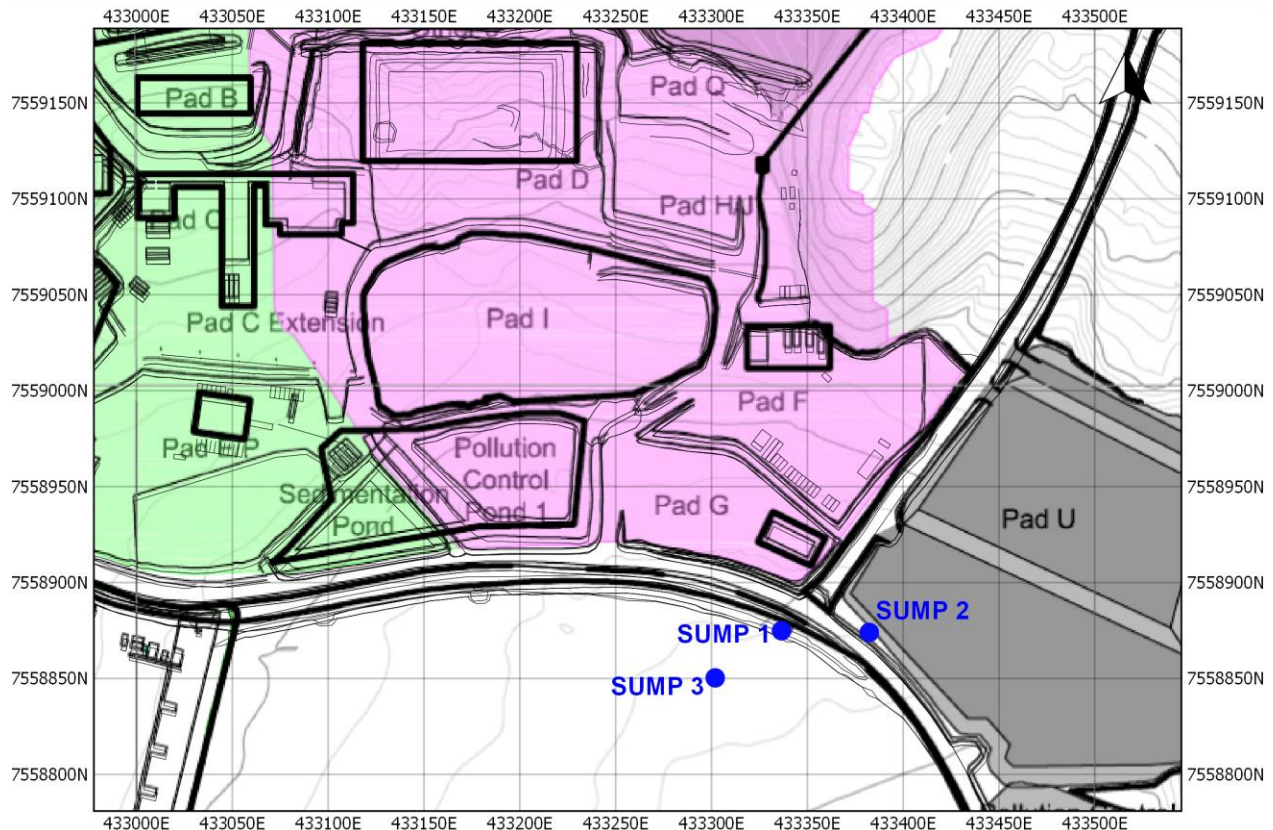


Figure 1. Location of 'Sump 3'

Sump 3 will be installed by hand excavation to minimize damage to the surrounding tundra and to prevent excessive over-excavation. Consistent with Sump 1 and 2, water level or water quality monitoring is not required in Sump 3 as the water is transferred to the Sedimentation Pond (monitoring station ST1). Installation is scheduled to occur prior to freshet in 2019 and is expected to last no more than a few days.

If required, effective erosion and sediment control measures will be installed prior to construction. Once constructed, the sump will be regularly inspected by the Environment Department to ensure they are functioning as intended. Additionally, this sump will be included in the annual geotechnical inspection and results will be submitted to the NWB in annual reports.

Should you have any questions please feel free to contact me at Oliver.curran@tmacresources.com

Sincerely,

Oliver Curran

Vice-President, Environmental Affairs TMAC Resources Inc.

Cc:

Licencing (NWB)

Kyle Conway / Sarah Warnock (TMAC)

Ashley Mathai (TMAC)

Shelley Potter (TMAC)

Adam Grzegorzczak (TMAC)

Attachments

Issued for Construction Sump 3 Design Drawings



TMAC Resources Inc.
Doris Project
Doris Camp Sump #3

Drawing Number	Drawing Title	Issue	Date	Revision
DCS#3-01	General Arrangement	Issued for Construction	1/25/2019	0
DCS#3-02	Typical Sump Details	Issued for Construction	1/25/2019	0



LEGEND

- ☐ Existing Infrastructure

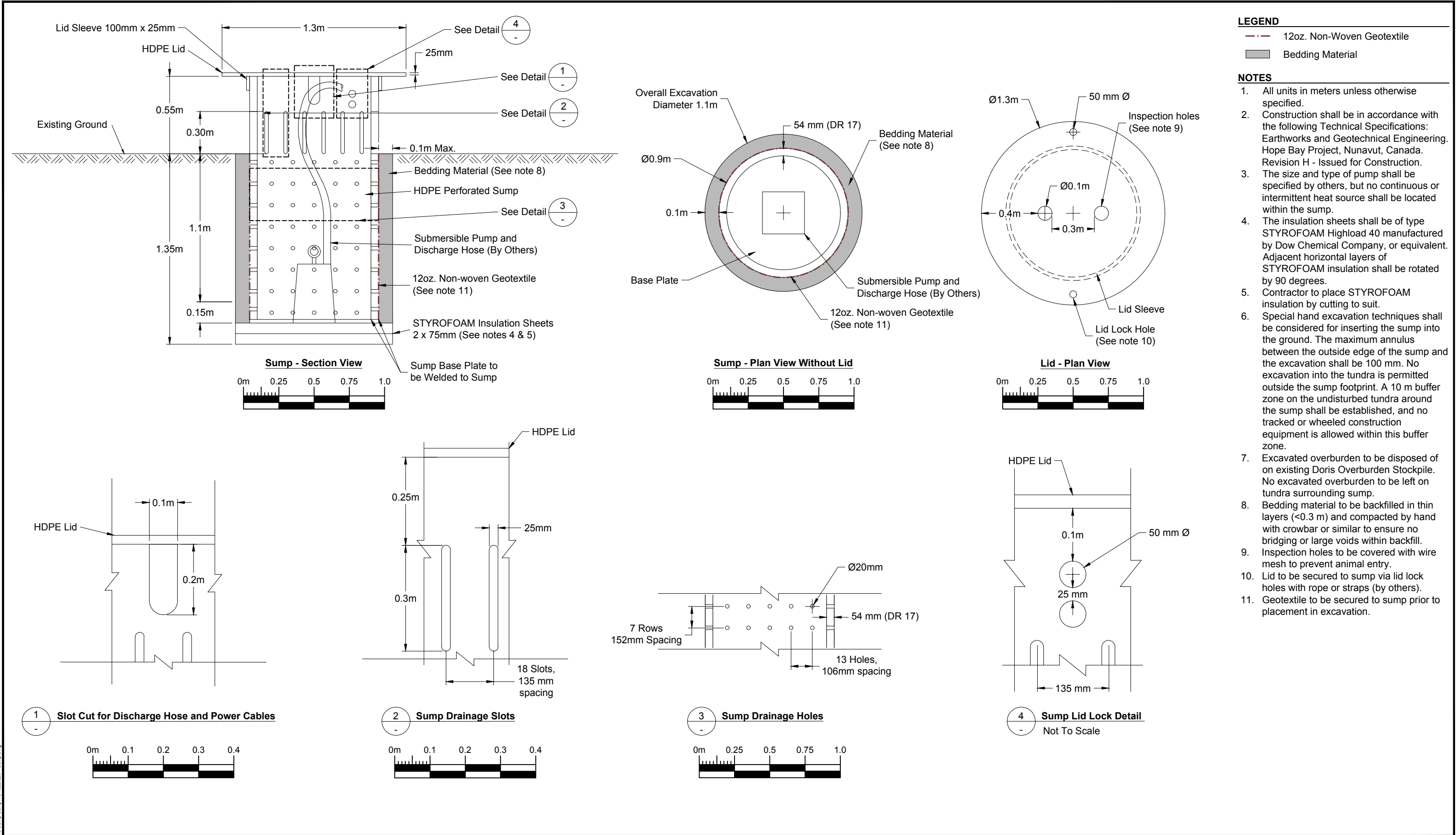
NOTES

1. Contours shown at 2.0m intervals.
2. All units in meters unless otherwise specified.
3. Construction shall be in accordance with the following Technical Specifications:
Earthworks and Geotechnical Engineering.
Hope Bay Project, Nunavut, Canada.
Revision H - Issued for Construction.
4. Exact location to be confirmed by site Environmental Supervisor.

REFERENCES

1. NAD83 UTM Zone 13.
2. Aerial image captured in 2007, provided by client.

[illegible]



P:\01_SITES\Hope Bay\JAC\DWG\DCS Camp Sump\1CT022.026 - Sump.dwg

										Doris Camp Sump #3	
										DRAWING TITLE:	
										Typical Sump Details	
										DRAWING NO.	SHEET
										DCS#3-02	2 OF 2
										REVISION NO.	0
										Hope Bay Project	
										1CT022.026	
										srk consulting	
										TMAC RESOURCES	
										Hope Bay Project	
										1CT022.026 - Sump.dwg	
										PROFESSIONAL ENGINEERS STAMP	
										DESIGN: CH	
										DRAWN: MK	
										REVIEWED: EMR	
										CHECKED: CH	
										APPROVED: EMR	
										DATE: 2019/01/25	
										FILE NAME: 1CT022.026 - Sump.dwg	
										SRK JOB NO.: 1CT022.026	
										Issued for Construction	
										CH	
										EMR	
										19/01/25	
										REFERENCE DRAWINGS	
										REVISIONS	