



145 King Street East
Suite 400,
Toronto, Ontario M5C 2Y7
416-628-0216

Sent by Email

August 30, 2022

Licensing
Nunavut Water Board
P.O. Box 119
Gjoa Haven, NU
X0B 1J0

Re: July 2022 – Monthly Monitoring Report for Water License 2AM-DOH1335

This report is comprised of the monitoring requirements set out in Part I and Schedule I of water licence 2AM-DOH1335 Amendment 2 (the license), and additional requirements from CIRNAC.

In March 2022, Agnico made the decision to maintain the suspension of production activities at the Doris Mine site and Madrid North Portal in order to dedicate the infrastructure of the Hope Bay site to exploration activities. As such, the mill operation will remain suspended and underground activities will focus on exploration development.

During the subject period of this report, the focus of activities at Doris was water management, environmental compliance and a ramp down of underground mining.

Dewatering of the Doris underground workings through the Robert's Bay Discharge System was continued throughout the month of July. Construction of the temporary water filled portable dam in the TIA was completed and has been collecting the water pumped from underground.

Sampling locations monitored under this licence (seasonally or when facilities are operational) are provided in Figure 6 through Figure 8 at the end of this report.

A waste rock pile survey was carried out during the month of July and the cumulative tonnage on the waste rock pile for Doris, contained in table 5 has been adjusted as a result.

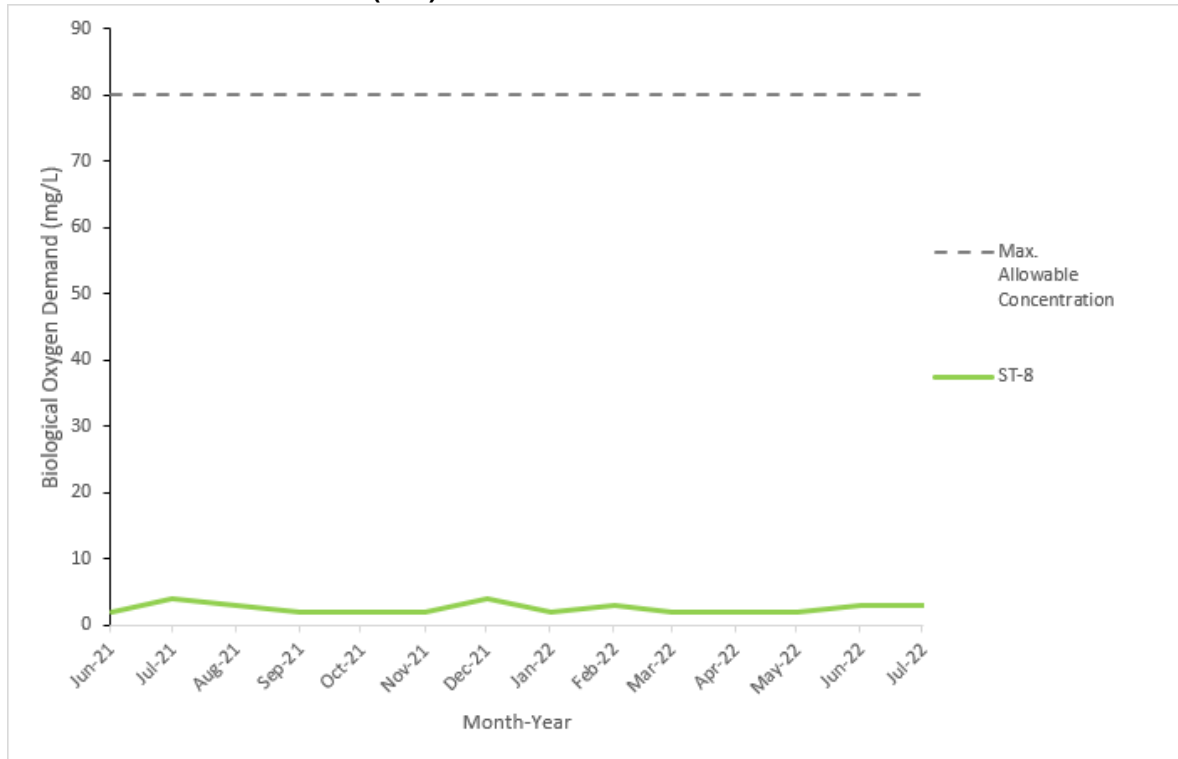
Site Wide Water Quality Monitoring Program (Part I Item 3 and Schedule I)

Water quality sampling was conducted in June at monitoring stations identified in Schedule I of the licence (ST-1 through ST-13, TL-1 through TL-12 and MMS-1 through MMS-10). Water quality samples were not collected for monitoring stations that were inactive during the month being reported (e.g., facilities that had not yet been constructed, were frozen during the month, or were not operationally active).

All parameters were compared to the applicable effluent quality limits outlined in Part D and Part F of the licence. No exceedances of effluent quality limits were observed in any samples collected this month. Results of all water quality monitoring are provided in Appendix A attached to this report.

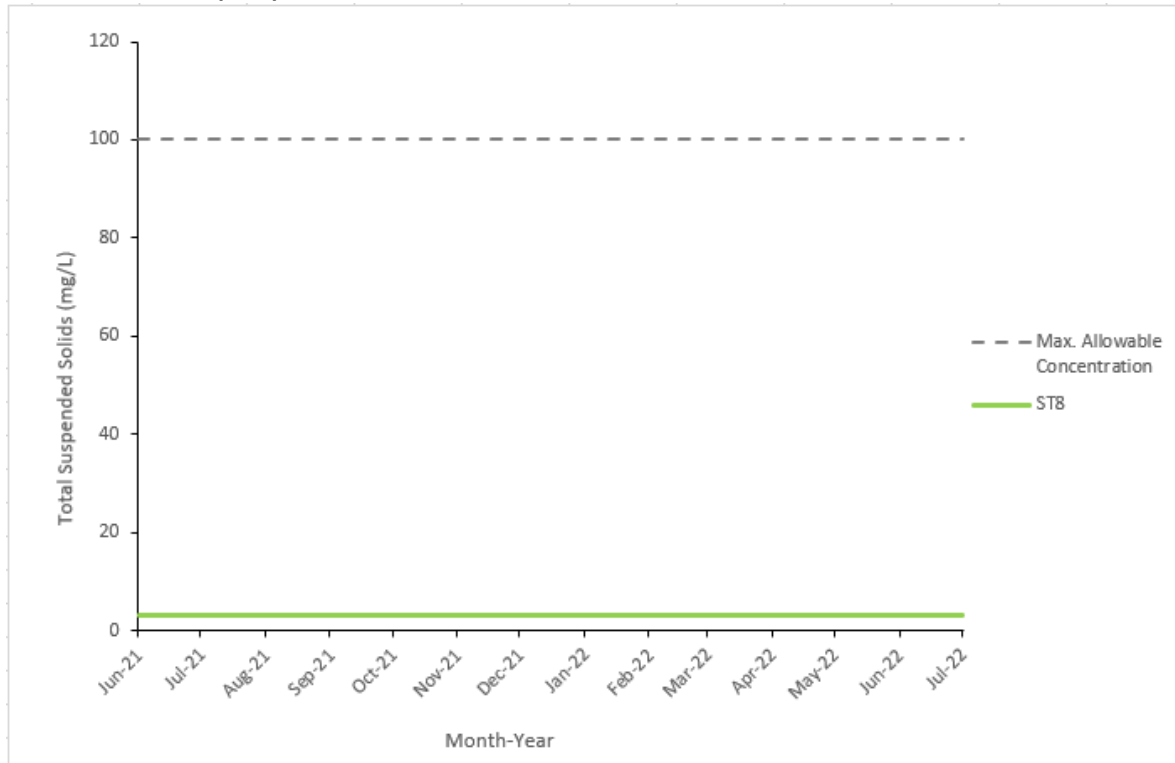
Figure 1 and 2 illustrates effluent quality characteristics for parameters of interest at select monitoring stations.

Figure 1. Biological Oxygen Demand Results Consistently Below Discharge Criteria for Wastewater Treatment Plant (ST8)



Note: Maximum Average Concentration as per Part F Item 4(b).

Figure 2. Total Suspended Solids Results Consistently Below Discharge Criteria for Wastewater Treatment Plant (ST8)



Note: Maximum Average Concentration as per Part F Item 4(b).

Flow and Volume Measurements (Part F, Part I and Schedule I)

Table 1. Effluent discharge, July 2022

Facility	Station Code	Discharge Volume (m ³)	Exceedances of Discharge Criteria	Discharge Location	Licence Reference
Doris Sedimentation Pond *	ST-1	20,698	N/A	Tailings Impoundment Area	Part F Item 17
Doris Contact Water Pond #1	ST-2	4,502	N/A	Doris sedimentation pond	Part F Item 17, 18(a)
Non-Hazardous Landfill Sump	ST-3	0	0	Facility not constructed	Part F Item 18(a)
Land farm Sump	ST-4	0	0	Tailings Impoundment Area	Part F Item 18(b)
Doris Plant Site Fuel Storage Area	ST-5	140	0	Tailings Impoundment Area	Part F Item 18(b)
Rob Bay Single 5ML Fuel Storage Area	ST-6a	0	0	Tundra Discharge 13W 432954 7563407	Part F Item 18(b)
Rob Bay Fuel Storage and Containment Berm	ST-6b	342	0	Tundra Discharge 13W 432878 7563130	Part F Item 18(b)
Doris Sewage Treatment Plant, Effluent	ST-8	807	0	Tundra Discharge 13W 432933 7559057	Part F Item 5(b-c)
Doris Sewage Treatment Plant, Sludge	N/A	27.4	N/A	Tailings Impoundment Area	Part I Item 5(f)
Doris Reagent and Cyanide Storage Facility Sump	ST-11	0	N/A	Tailings Impoundment Area	Part F Item 17
Doris Contact Water Pond #2	ST-13	0	N/A	Facility not constructed	Part F Item 17
Doris Mine Water Discharge	TL-12	32,038	N/A	Tailings Impoundment Area Roberts Bay	
Madrid North Contact Water Pond	MMS-1	0	0	Tailings Impoundment Area	Part F Item 17, 18(a)
Madrid South Primary Contact Water Pond	MMS-2	0	N/A	Facility not constructed	Part F Item 17, 18(a)
Madrid South Secondary Contact Water Pond	MMS-3	0	N/A	Facility not constructed	Part F Item 17, 18(a)
Madrid South Fuel Storage Facility	MMS-5	0	0	Facility not constructed	Part F Item 18(b)
Madrid North Connector	MMS-7	0	N/A	Facility not constructed	
Madrid North Fuel Storage Facility	MMS-8	0	0	Facility not constructed	Part F Item 18(b)
Madrid Mine Water Discharge	MMS-10	0	N/A	Tailings Impoundment Area	

Records of visual monitoring of discharge to tundra are maintained on file as per Part I Item 11.

* Note: Volume reported includes effluent transferred from the Doris Contact Water Pond #1, Landfarm Sump, Doris Plant Site Fuel Storage Area and Madrid North Contact Water Pond.

Table 2. Discharge from TIA to Roberts Bay, July 2022

Month	Number of days of discharge	Discharge Volume (m ³)	Exceedances of Discharge Criteria*
January	0	0	0
February	0	0	0
March	0	0	0
April	0	0	0
May	0	0	0
June	0	0	0
July	0	0	0
Annual Cumulative	0	0	0

* Discharge criteria as outlined in *Metal and Diamond Mining Effluent Regulations*.

Acute Lethality testing conducted as outlined in Part F Item 22 and Part I Item 14

Table 3. Water Usage, July 2022

Month	Windy Lake (ST-7A)				Doris Lake (ST-7)					Total Usage
	Domestic Water*	Industrial**	Winter Track	Surface Exploration	Domestic Water*	Surface Exploration	Industrial Usage**	Dust Suppression	Winter Track	
January	784	14	10	55	0	0	0	0	0	863
February	1,087	12	493	223	0	0	0	0	0	1,815
March	1,017	16	1,114	386	0	212	0	0	300	3,045
April	745	0	288	0	0	0	0	0	80	1,113
May	755	14	0	0	0	0	0	0	0	769
June	890	15	0	0	0	0	0	128	0	1,033
July	901	11	0	0	0	0	0	208	0	1,120
Annual Total	6,180	81	1,905	664	0	212	0	336	380	9,758
Annual Allowance	43,800						1,930,000			2,033,800

* As permitted by water licences 2BE-HOP1222 and 2AM-DOH1335 Part E Item 1 and Part I Item 5(a)(b)

** Includes industrial uses such as underground drilling, core processing, milling, concrete batching, etc.

Table 4. Volume of Reclaim Water from the TIA for Process Water, July 2022

Month	Reclaim Water (m³) *
January	58,144
February	77,385
March	29,403
April	0
May	0
June	0
July	0
Annual Cumulative	164,902

* As per Part E Item 5 and Part I Item 5(c)
Numbers rounded to the nearest cubic meter.

Table 5. Doris Waste Rock and Ore Volumes, July 2022

Month	Waste Rock Management					Underground Void Space			Ore Processing and Tailings Management		
	Produced from Mining Activity (tonnes)	Backfilled Directly to Mine (tonnes)	Returned Underground from Temporary Waste Rock Pile* (tonnes)	Moved to Temporary Waste Rock Pile (tonnes)*	Cumulative on Temporary Waste Rock Pile (tonnes)*	Volume Created from Mining Activities (tonnes)	Cumulative Volume Available for Backfill (tonnes)	Cumulative Volume Available for Backfill (m³)	Quantity of Ore Processed** (tonnes)	Total Dry Tailings Placed in TIA** (tonnes)	Total Dry Detoxified Tailings Placed Underground** (tonnes)
December Balance	-	-	-	-	723,872	-	1,700,749	751,239	-	-	-
January	12,306	2,214	0	10,092	733,964	15,751	1,558,255	677,353	0	0	0
February	9,080	6,565	0	2,515	736,479	6,521	1,551,734	679,682	0	0	0
March	11,560	6,644	0	4,916	741,395	2,923	1,548,811	680,726	0	0	0
April	12,368	0	0	12,368	753,763	12,368	1,561,179	685,143	0	0	0
May	13,106	0	0	13,106	766,869	13,106	1,574,285	689,824	0	0	0
June	13,615	0	0	13,615	780,484	13,615	1,587,900	703,439	0	0	0
July	14,657	0	0	14,657	686,044	14,657	1,671,859	828,875	0	0	0
Cumulative Total	86,692	15,423	0	71,269		78,941			0	0	0

* As per Part I Item 5(d)(e)

** As per Part I Item 6

Note: Void space created from mining activities is determined as the sum of the initial void space as calculated in March 2017 and void space created each month from mining activities. A negative volume of void space created in a month indicates that a higher volume of waste rock and detoxified tailings was returned underground compared to the volume of void space created from new mining activities.

Table 6. Madrid North Waste Rock and Ore Volumes, July 2022

Month	Waste Rock Management						Underground Void Space			Ore Produced
	Produced from Mining Activity (tonnes)	Backfilled Directly to Underground Mine (tonnes)	Returned Underground from Temporary Waste Rock Pile* (tonnes)	Moved to Temporary Waste Rock Pile (tonnes)*	Moved to Naartok East Crown Pillar Trench for Backfill (tonnes)*	Cumulative on Temporary Waste Rock Pile (tonnes)*	Volume Created from Mining Activities (tonnes)	Cumulative Volume Available for Backfill (tonnes)	Cumulative Volume Available for Backfill (m³)	Quantity of Ore Produced** (tonnes)
December Balance	-	-	-	-	-	0	-	-	-	-
January	0	0	0	0	0	0	0	0	0	0
February	0	0	0	0	0	0	0	0	0	0
March	0	0	0	0	0	0	0	0	0	0
April	0	0	0	0	0	0	0	0	0	0
May	0	0	0	0	0	0	0	0	0	0
June	0	0	0	0	0	0	0	0	0	0
July	0	0	0	0	0	0	0	0	0	0
Cumulative Total	0	0	0	0	0	0	0	0	0	0

* As per Part I Item 5(d)(e)

** As per Part I Item 6

Note: Void space created from mining activities is determined as the sum of the initial void space as calculated in December 2021 and void space created each month from mining activities. A negative volume of void space created in a month indicates that a higher volume of waste rock was returned underground or backfilled in the Naartok East Crown Pillar trench compared to the volume of void space created from new mining activities.

Table 7. Doris Lake Water Level (ST-12), July 2022

Month	Minimum Water Level (masl)	Maximum Water Level (masl)	Mean Water Level (masl)	Monthly Water Level Variation (masl)*	Comparison of Mean Water Level from Month to Month (masl)^
January	21.774	21.802	21.788	-0.005	-0.010
February	21.755	21.790	21.774	0.035	-0.014
March	21.742	21.764	21.753	0.023	-0.021
April	21.718	21.753	21.735	0.035	-0.018
May	21.706	21.787	21.734	0.081	-0.001
June	21.817	22.079	22.021	0.262	0.287
July	21.787	21.998	21.888	0.211	-0.133

* Monthly Water Level Variation is calculated as the difference between the Maximum Water Level and the Minimum Water Level measured during the month.

^ Comparison of the change in water level from month to month. This value is calculated by subtracting the Mean Water Level of the current month from the Mean Water Level of the previous month (e.g. February Mean Water level - January Mean Water level). A positive value from this calculation indicates a rise in water level since the previous month; a negative value from this calculation indicates a drop in water level since the previous month.

Waste Management (Part F Item 10 and 11)

In July, Agnico shipped no hazardous waste offsite. As a result, table 8 has been removed from this month's report. Waste shipments are expected to proceed in August.

Summary of Assessments of Water Balance and Water Quality Model

(Part F Item 24 and Part I Item 12 c)

Average monthly water quality, hydrologic, and climatic monitoring data were collected while in operations during July. Data will contribute to the assessment of the water and load balance model and will be compared to the predicted water quality and elevation within the TIA and will be reported in the annual report for 2022.

Thermal Monitoring (Part I Items 7, 8 and Schedule I)

Thermal monitoring undertaken as per Part I Items 7, 8 and Schedule I is reported in the annual Geotechnical Report.

Site Freshet and Precipitation Conditions (Part I Item 12(d))

Visual monitoring was conducted at the Diversion Berm this month. No issues were identified at the Diversion Berm and associated check dam in July. Photos of this infrastructure are provided in Figure 3 below.

Inspections were completed of site culverts throughout the month of July. No issues were identified with these water management structures. Figure 4 and 5 below shows the upstream and downstream conditions of culverts located at the Marine Outfall Berm Access Road and the Madrid All-Weather Road.

Figure 3. Diversion berm during July 2022



Figure 4. Culvert on 730 pumphouse access road upstream (left) and downstream (right) July 2022

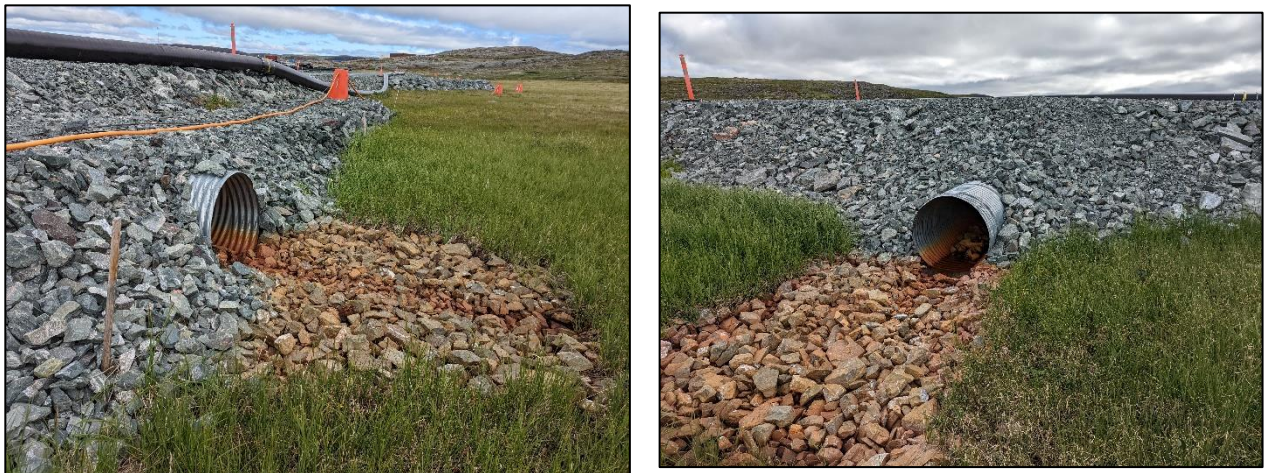


Figure 5. Culvert at Madrid All-Weather Road at Naartok intersection upstream (right) and downstream (left) July 2022



Incident Reporting

No incidents pertaining to this licence occurred this month.

Should there be any questions regarding this monthly report, please contact me at

guillaume.dumont-vandewinkel@agnicoeagle.com.

Yours sincerely,

A handwritten signature in cursive script, reading "Guillaume Dumont-Vandewinkel".

Guillaume Dumont-Vandewinkel
Environmental Coordinator
Hope Bay Project
(819) 759-3555 ext. 4600101

Cc:

Jonathan Mesher, Water Resources Officer, CIRNAC

Eric Steinmetzer, General Manager – Hope Bay, Agnico Eagle

Nancy Duquet-Harvey, Environmental Superintendent – Hope Bay, Agnico Eagle

Figure 6. 2AM-DOH1335 SNP Monitoring Locations



Figure 7. 2AM-DOH1335 SNP Monitoring Locations



Figure 8. 2AM-DOH1335 SNP Monitoring Locations

