

# LEGEND

- Spigot Location
- Deposited Tailings
- Dam/Dike
- Previously Deposited Tailings
- Proposed Tailings Topography

# NOTES

- Deposition durations are approximate and were based the Mine Plan average production rates provided by TMAC.
- Assumed an average deposited tailings beach slope of 1.0%.
- A deposited tailings dry density of 1.3t/m<sup>3</sup> was used.
- All tailings volumes presented include ice entrainment at 20% of production.
- Dam and dike elevations shown were assumed constant throughout deposition.
- Total storage requirement includes Madrid and Boston Tailings (Tailings 11.6Mm<sup>3</sup> + Ice entrainment 2.3Mm<sup>3</sup>)



srk consulting

SRK JOB NO.: 1CT022.028  
 FILE NAME: 1CT022.028 - P2 Deposition Plan.dwg

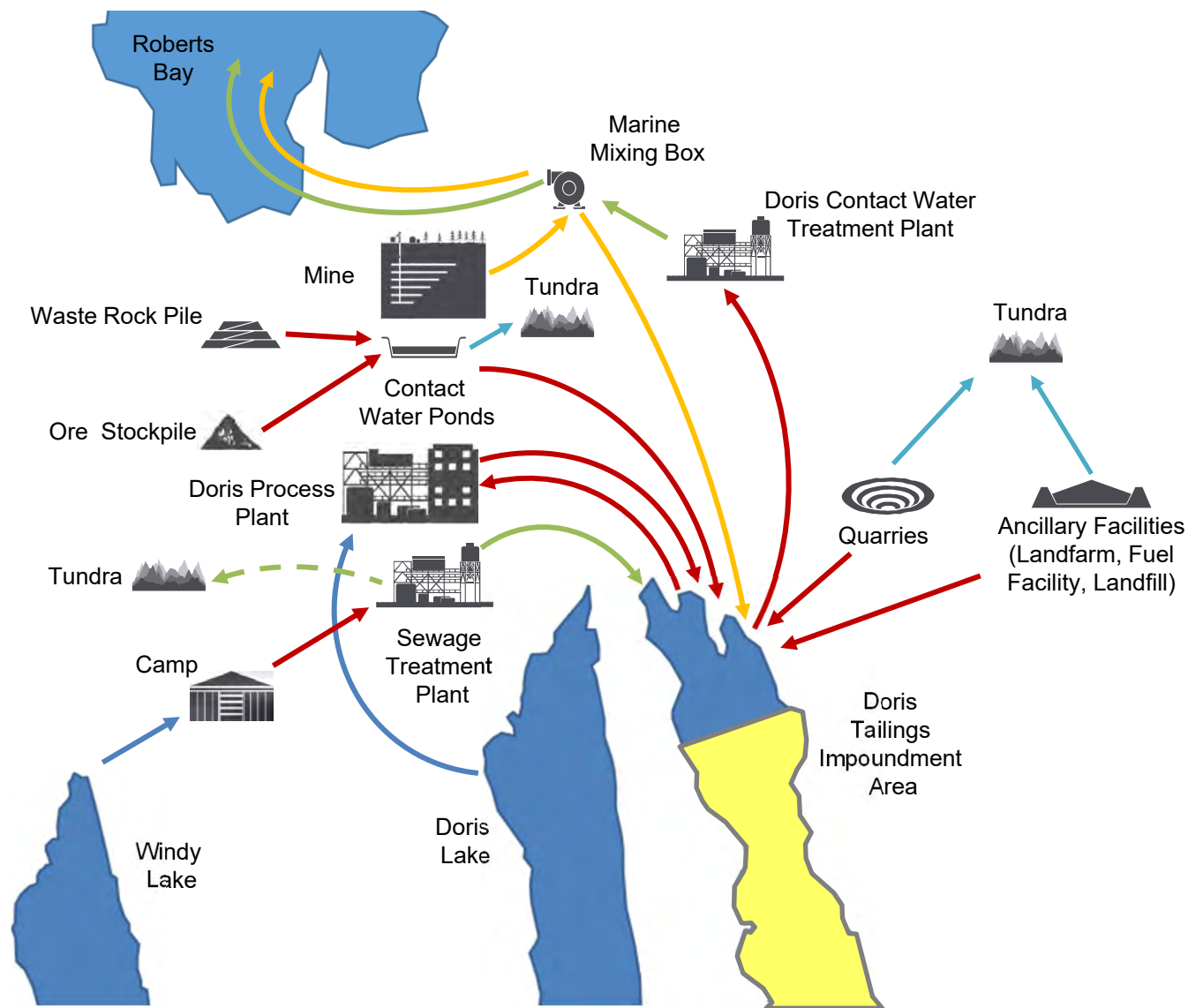
TMAC  
 RESOURCES

Doris TIA

2018 Annual Geotechnical Inspection

Phase 2 Planned Tailings  
 Deposition (EOY 2029 and 2032)

DATE: January 2019	APPROVED: PL	FIGURE: 14
-----------------------	-----------------	---------------



# Legend

- Treated Water (Operations)
- Non-contact Water
- Freshwater
- Contact Water
- Mine Water
- - - → Treated Water (Closure and Construction)



Job No: 1CT022.028  
 Filename: DorisTIA\_WaterMgmtSchematic\_1CT022012.pptx

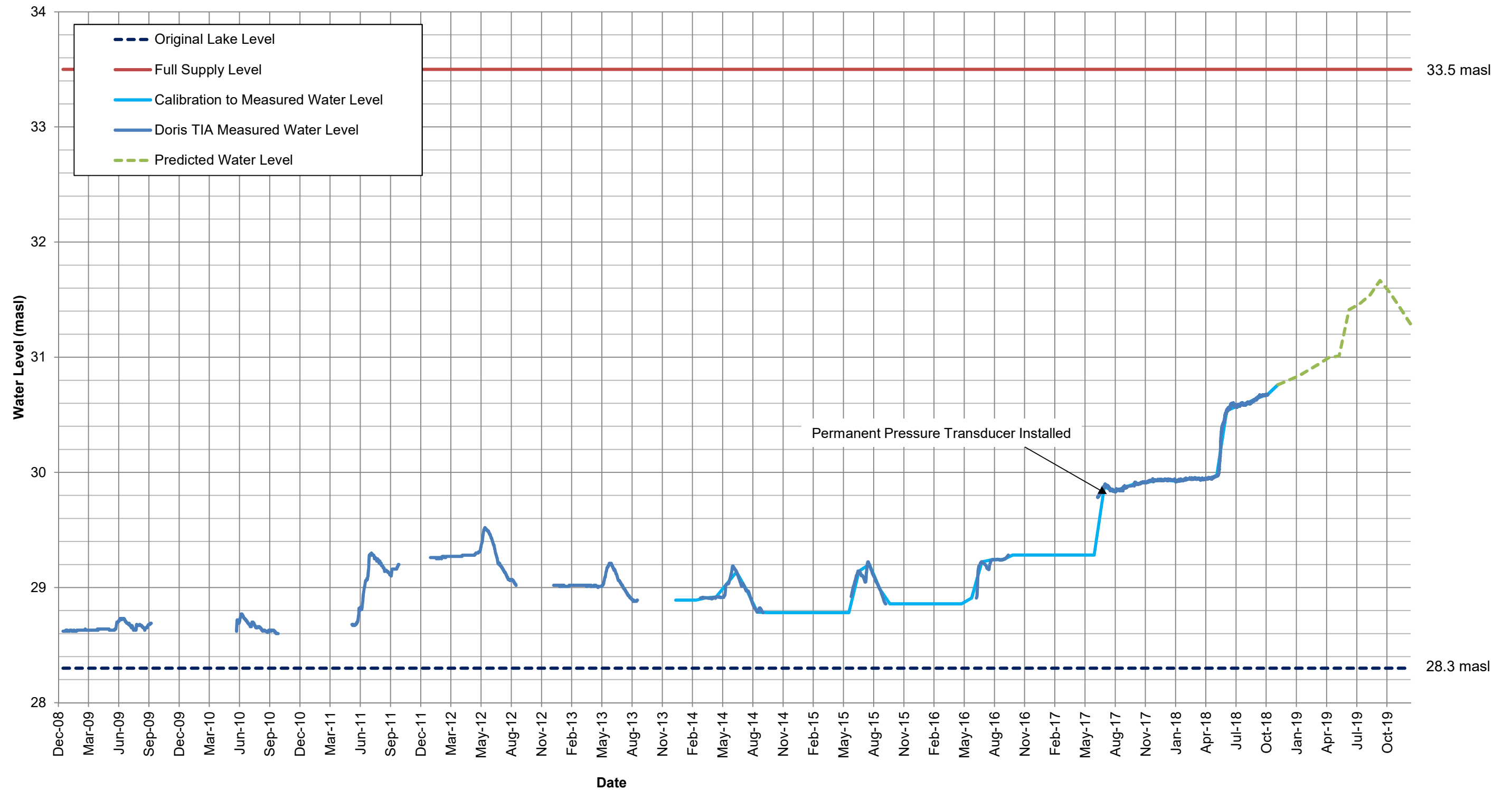


Doris TIA

2018 Annual Geotechnical Inspection

## Schematic of TIA Water Management

Date: Jan. 2019	Approved: EMR	Figure: <b>15</b>
--------------------	------------------	----------------------



Notes:  
The predicted water level presented here is based on the detailed operational TIA water balance as discussed in the report



Job No: 1CT022.028  
Filename: 15\_ActualsPredWaterLevel\_20190307.pptx



Doris TIA

2018 Annual Geotechnical Inspection

**Actual and Predicted Water Level in TIA**

Date: Mar. 2019	Approved: PDL	Figure: <b>16</b>
--------------------	------------------	----------------------

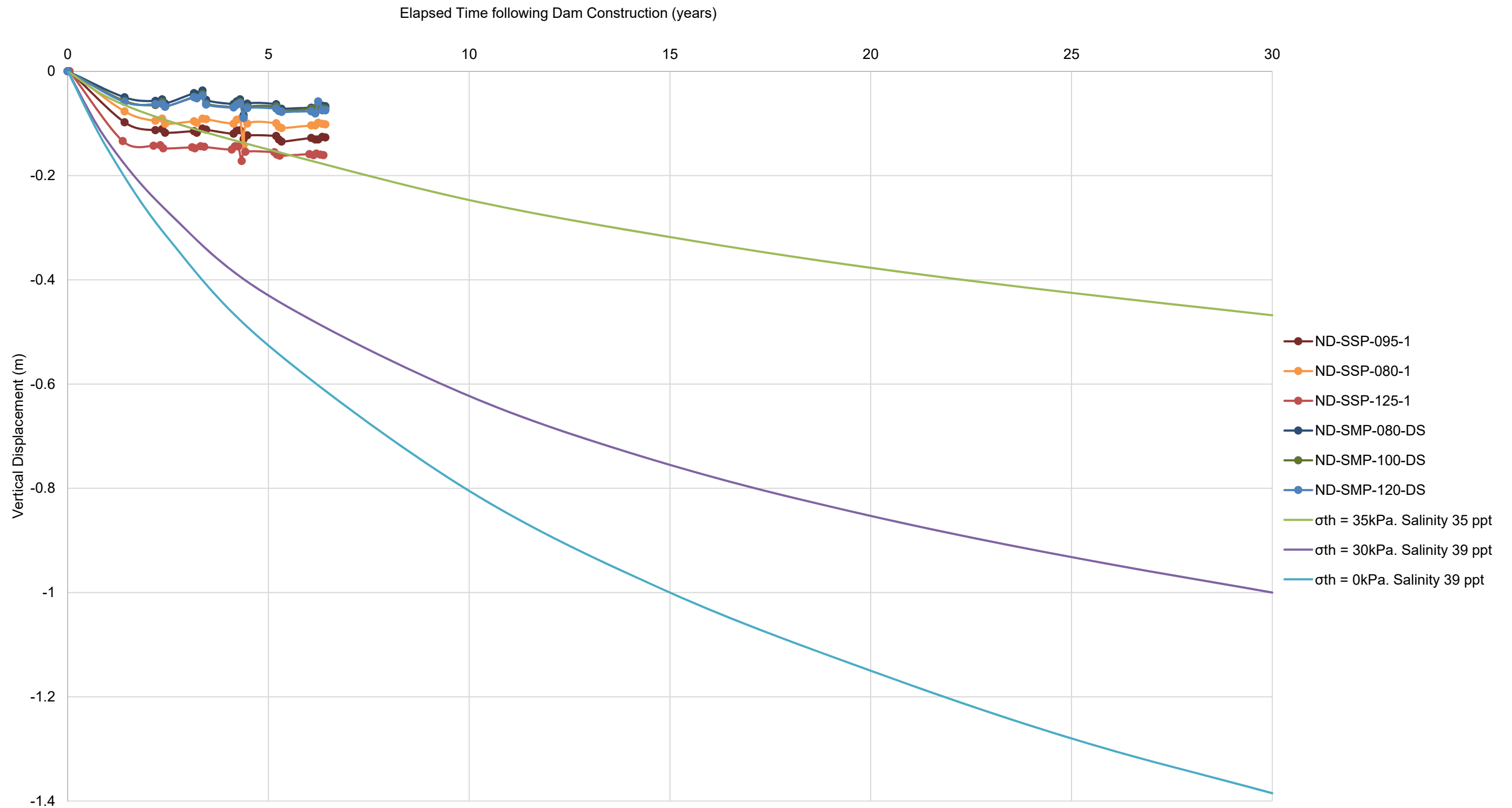


Photo Log

---