



The old STP outflow – looking north from the Quarry #2 Access Road



The new STP outflow – looking west from Quarry #2



Crushed rock stockpiles in Quarry #2 – looking north



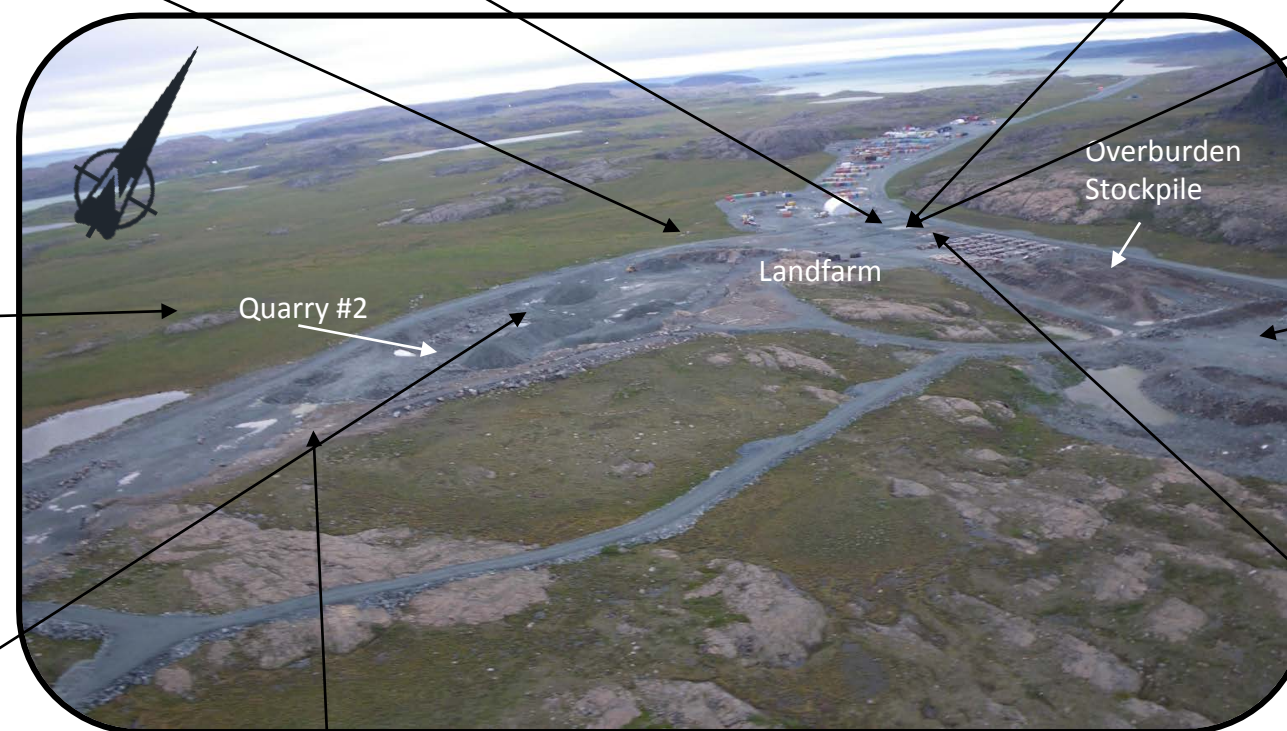
Condition of the Landfarm's Water Containment Pond



Condition of the Landfarm's Snow Containment Pond



Access Ramp to the Soil Containment Pond



The Overburden Stockpile east of Quarry #2 and south of the Landfarm



Condition of the Landfarm's Soil Containment Pond



Aerial view of Quarry #2 – looking north

		2014 Geotechnical Inspection		
		Quarry #2 and Landfarm		
Job No: 1CT022.001 Filename: 2014GeotechInsp_rev00.pptx	HOPE BAY MINING LTD.	Date: Oct 2014	Approved: LW	Figure: 13



North high wall of the 7.5 ML Doris North Camp Tank Farm



Power Plant on Pad B – looking southeast from the North Access Road



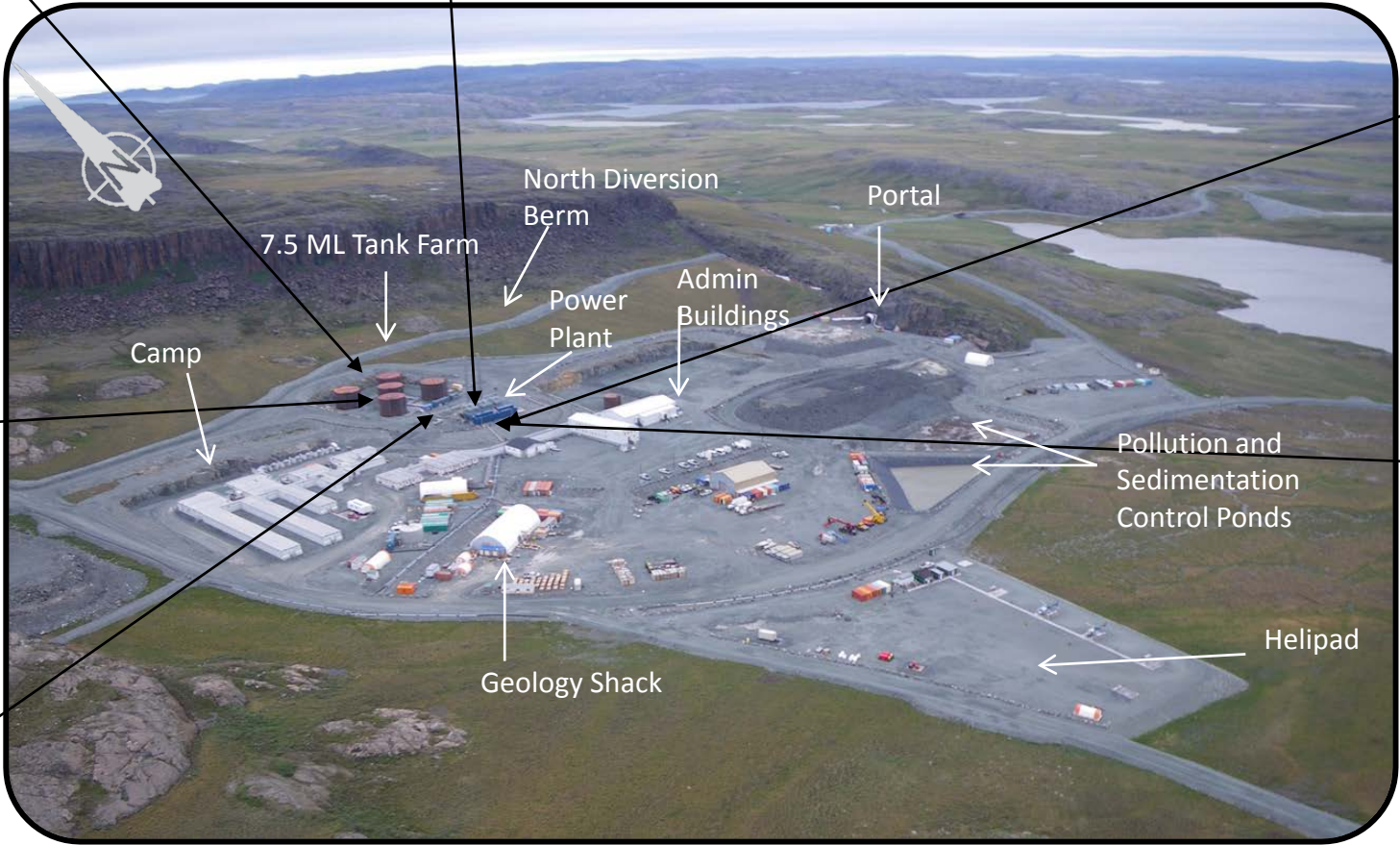
The Power Plant on Pad B – looking northeast from Pad X



Interconnected fuel tanks within the 7.5 ML Doris North Camp Tank Farm – looking south



7.5 ML Doris North Camp Tank Farm Transfer Station – looking west from the North Access Road



Survey Monitoring Point PH-2



The north high wall of Pad X – looking east from Pad X



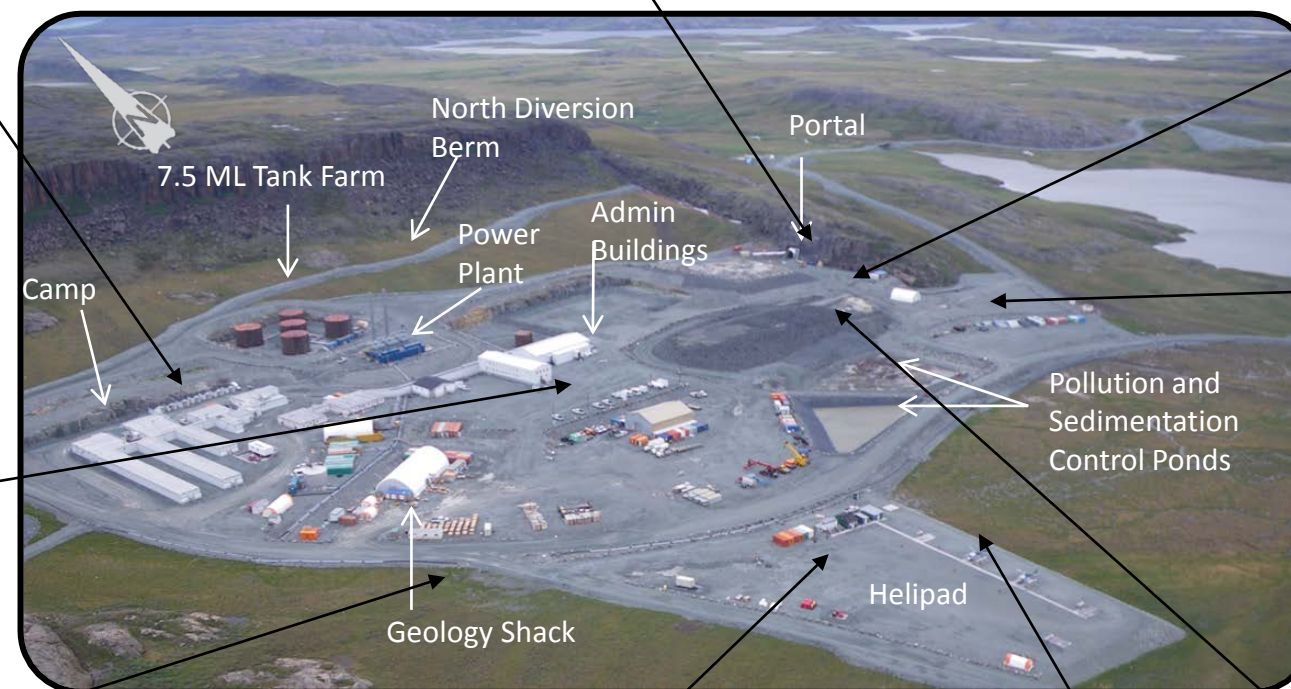
Portal entrance



General surface conditions of Pad L - looking south from the Portal Entrance



General Surface Conditions of Pad C – looking south from Pad D



Fresh water intake pipeline – looking east from the Pump House on the Float Plane Dock Access Road



The junction of the Primary, Doris-Windy, and Float Plane Dock Access Roads – the rock fill is 0.5 m thick with surface water into the junction of the roads



Condition of Helipad– looking south from the Float Plane Dock Access Road



Seepage coming from along the eastern edge of the Helipad – looking south



Pad Q Expansion over pads H/J waste rock - looking north from Pad F

srk consulting

Job No: 1CT022.001
Filename: 2014GeotechInsp_rev00.pptx

TMAC
RESOURCES

HOPE BAY MINING LTD.

2014 Geotechnical Inspection

Portal, Helipad and Other Pads

Date: Oct 2014	Approved: LW	Figure: 15
-------------------	-----------------	----------------------



Exposed geotextile along the North Diversion Berm



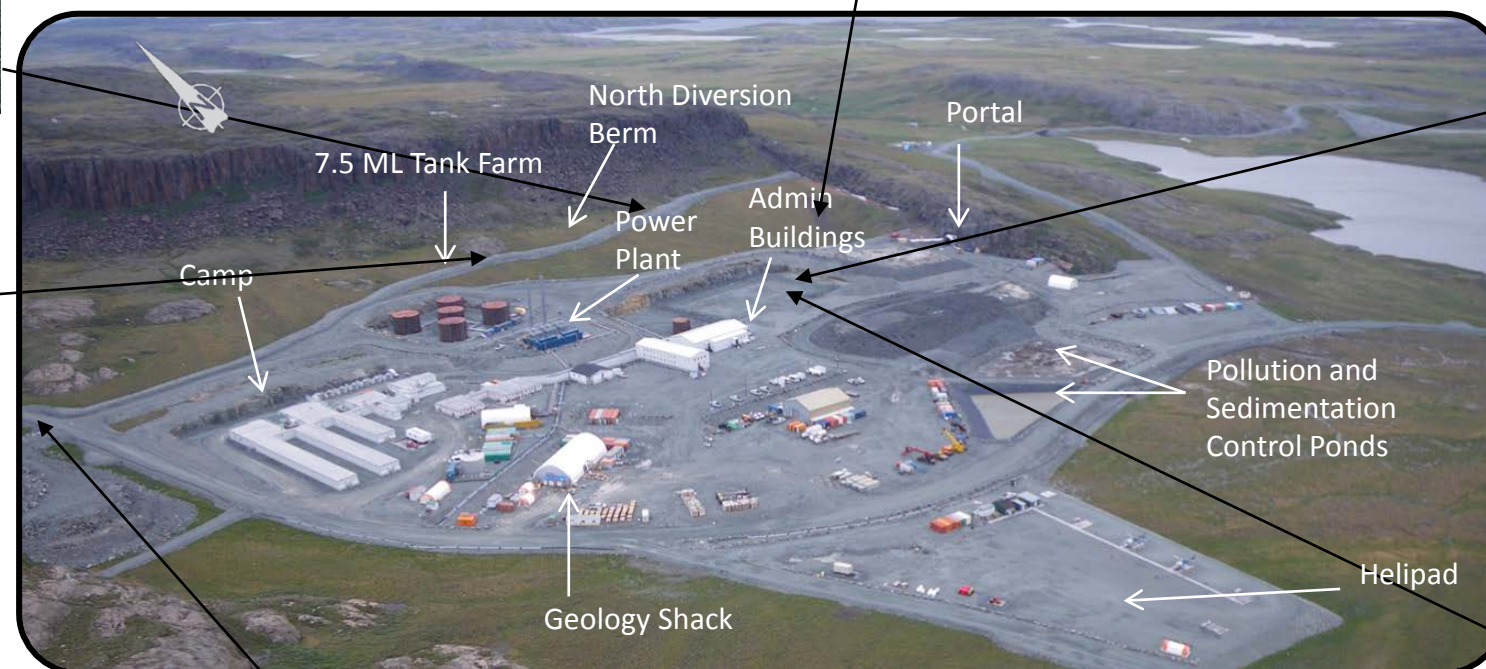
Historic saltburn from exploration drilling – looking south from the North Diversion Berm



Water ponding by the highwall near northeast corner of Pad D



North Diversion Berm – looking west



The culverts going under the Primary Road at the junction of the Primary Road and the North Access Road and Doris North Diversion Berm



Temporary pond on Pad D has been dismantled - looking northwest

		2014 Geotechnical Inspection		
		Temporary Pond and Diversion Berm		
Job No: 1CT022.001	HOPE BAY MINING LTD.	Date: Oct 2014	Approved: LW	Figure: 16
Filename: 2014GeotechInsp_rev00.pptx				



Divider Berm between the Ponds
- looking south from Pad E/P



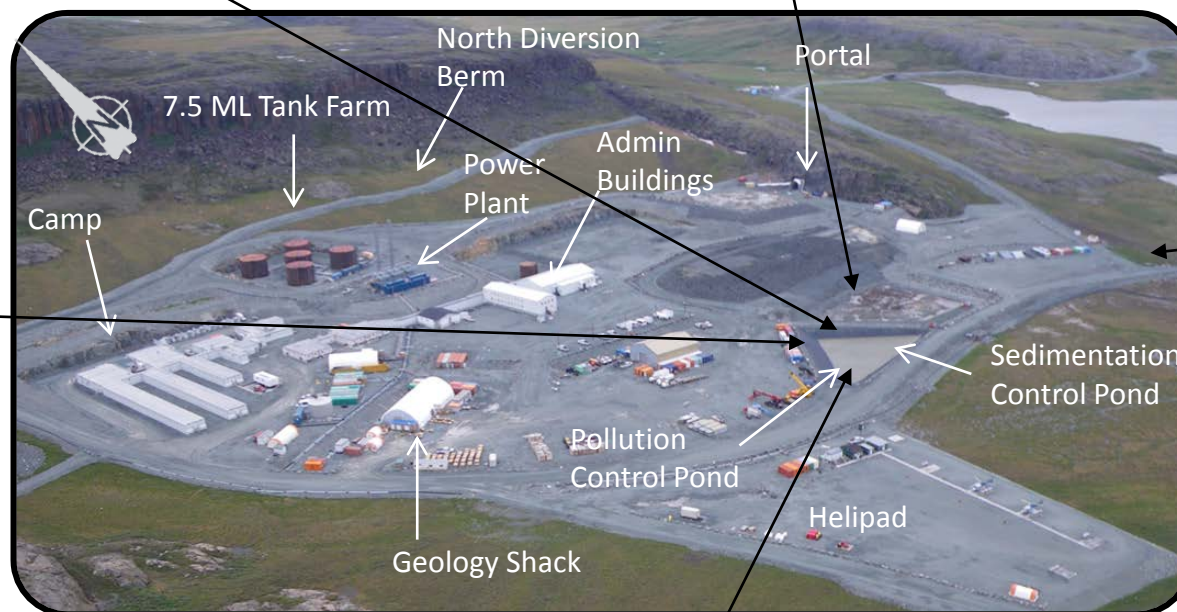
Seepage from the toe of the Waste Rock Pile and from the toe of Pad I. Tension cracks have developed along the crest of Pad I Pad I– looking west



The sump in the southeast corner of the Pollution Control Pond – looking east



Cuts in HDPE liner along the crest of the Sediment Control Pond at Pad E/P



Sump #2 - looking northwest towards Doris Camp



Sump #1 – looking southeast from the Float Plane Dock Access Road



Sediment Control Pond – looking east from Pad E/P



Job No: 1CT022.001
Filename: 2014GeotechInsp_rev00.pptx



HOPE BAY MINING LTD.

2014 Geotechnical Inspection

Sedimentation and Pollution Control Ponds

Date: Oct 2014	Approved: LW	Figure: 17
-------------------	-----------------	----------------------



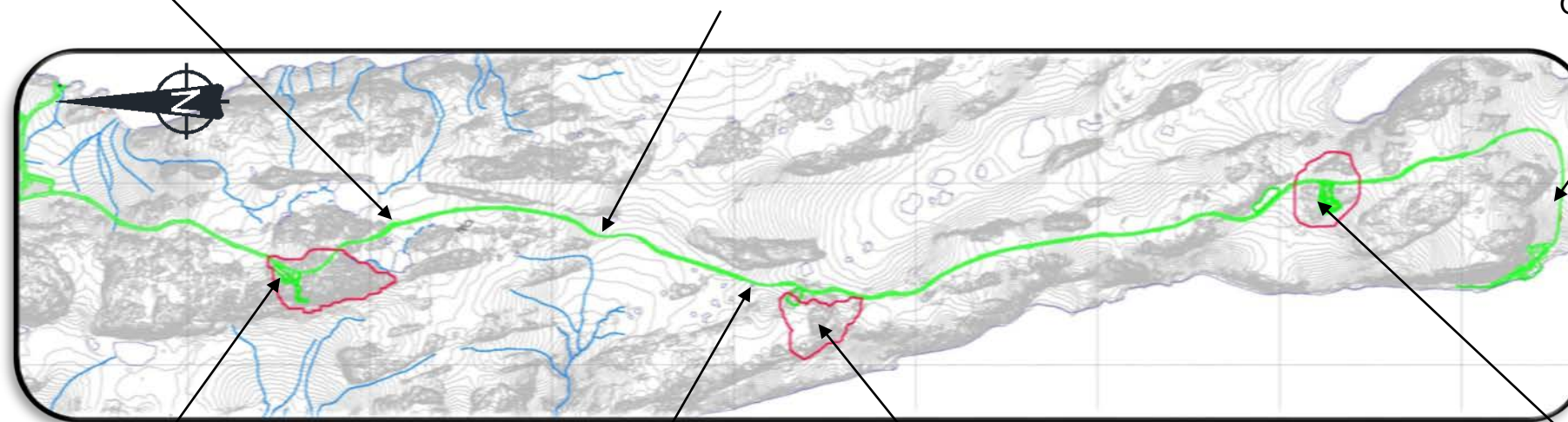
Aerial view of the arched culvert at Stream Crossing #1



Aerial view of the two bridges at Stream Crossings #2 and #3



Old Drill Cutting Disposal Area



Doris-Windy Road by Quarry A – looking south



Aerial view of the single bridge at Stream Crossing #4 – looking northwest



The Doris-Windy Road near Quarry B – looking north



Core boxes being stored on Overburden Dump at Quarry D – looking north



Job No: 1CT022.001
Filename: 2014GeotechInsp_rev00.pptx



HOPE BAY MINING LTD.

2014 Geotechnical Inspection

Doris-Windy All Weather Road

Date: Oct 2014	Approved: LW	Figure: 18
-------------------	-----------------	----------------------



Condition of the battered and straight piles along the north and south sides of Arched Culvert #1



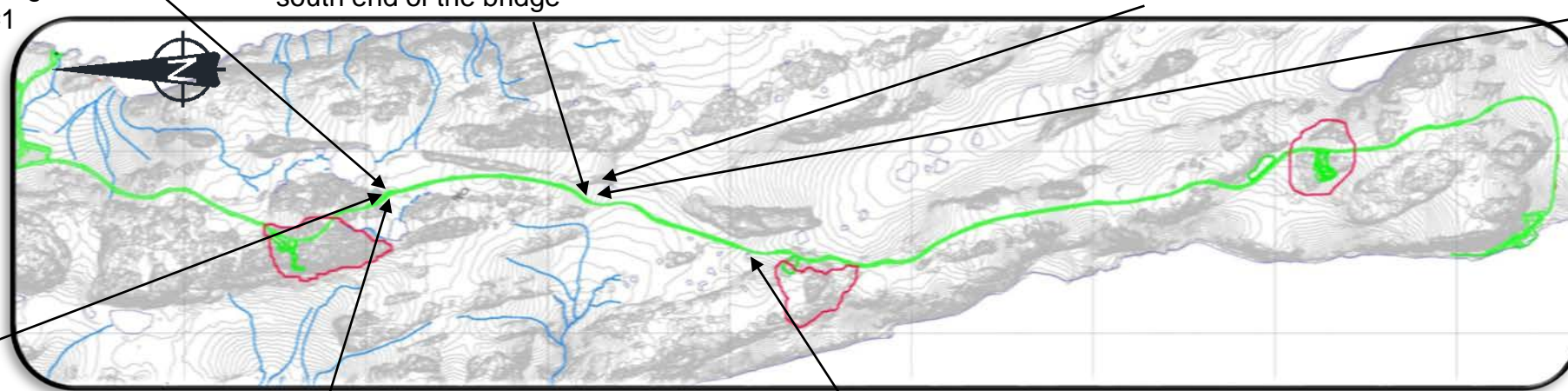
The bridge over Stream Crossing #3 appears to have been shifted as indicated by the decking – looking north from the south end of the bridge



The wooden timber, along the west side, at the north end of the bridge over Stream Crossing #3 has been damaged



The timber retaining wall at the south abutment of the Bridge over Stream Crossing #3 has also been shifted





Arched Culvert #1 – looking east



The condition of the I-beam along the south side remains unchanged



The bridge over Stream Crossing #4 – looking east

		2014 Geotechnical Inspection		
		Doris-Windy All Weather Road Stream Crossings		
Job No: 1CT022.001	HOPE BAY MINING LTD.	Date: Oct 2014	Approved: LW	Figure: 19
Filename: 2014GeotechInsp_rev00.pptx				



Aerial view of Quarry A and the Doris-Windy Road – looking south



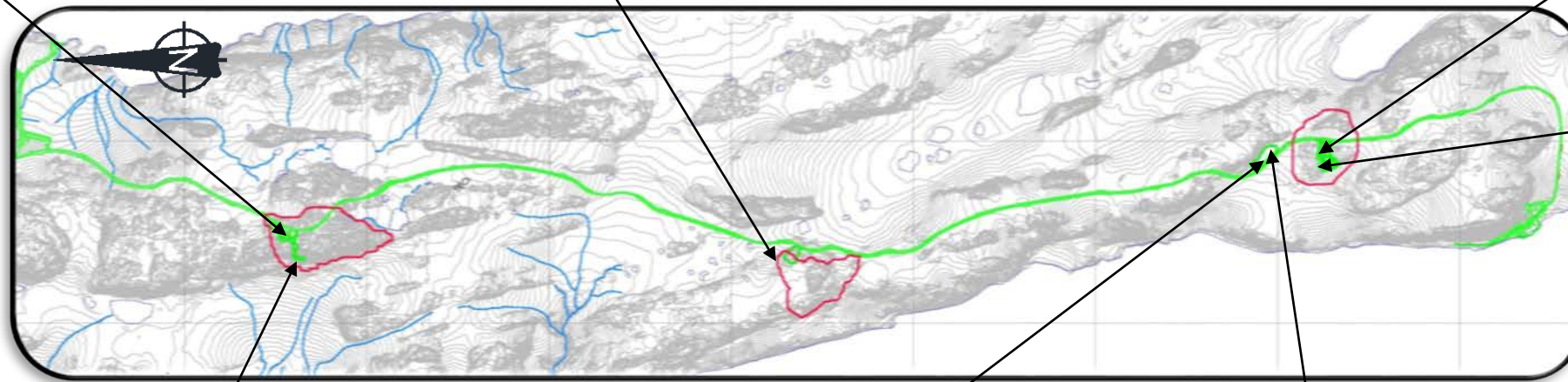
Aerial view of Quarry B with five Type 4 explosive magazines – looking west



A sump has been excavated in the middle of Quarry B



Aerial view of Quarry D with core box storage and tote bags of non-saline drill cuttings – looking south



A lined containment area has been constructed at the western edge of Quarry D next to the tote bags of drill cuttings – looking west



Aerial view of the south end of Quarry A with two type 4 Explosive Magazines – looking east



Tension cracks on west side of the Quarry D Overburden Stockpile



Aerial view of Quarry D Overburden Stockpile with core box storage – looking northwest



Job No: 1CT022.001
Filename: 2014GeotechInsp_rev00.pptx



HOPE BAY MINING LTD.

2014 Geotechnical Inspection

Doris-Windy All Weather Road Quarries

Date: Oct 2014	Approved: LW	Figure: 20
-------------------	-----------------	----------------------



The 2010 surficial slope failure – looking southwest from the Primary Vent Raise



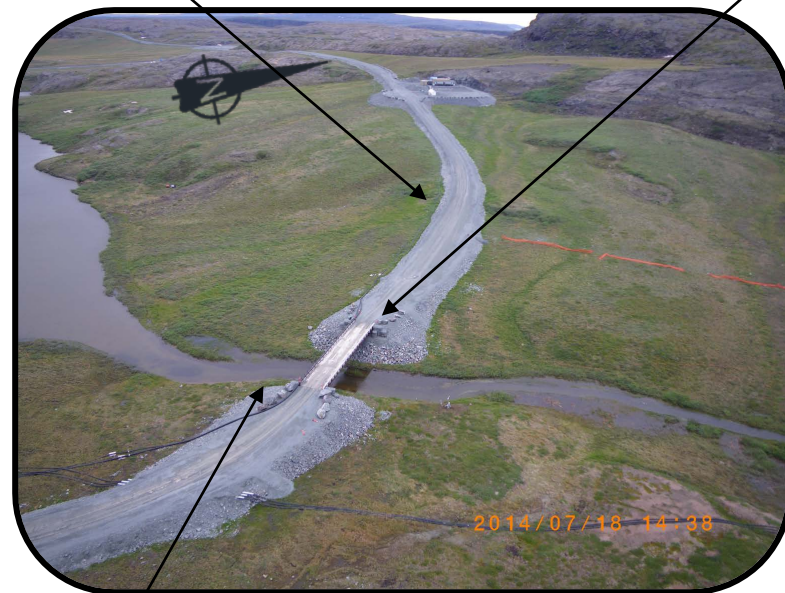
Northwest abutment and rock gabions at the Doris Creek Bridge



Primary Vent Raise – looking north



Condition of the high wall at the north end of the Primary Vent Raise – looking west



Aerial view of Doris Creek Bridge and Secondary Road looking towards Primary Vent



Aerial view of the Primary Vent Raise



Primary Vent Raise Fuel Transfer Station – looking northwest



Southeast abutment and rock gabions at the Doris Creek Bridge



Aerial view of Secondary Road and North Dam

 Job No: 1CT022.001 Filename: 2014GeotechInsp_rev00.pptx	 HOPE BAY MINING LTD.	2014 Geotechnical Inspection		
		Secondary Road and Doris Creek Bridge Date: Oct 2014 Approved: LW Figure: 21		



Tension cracks on the south side of the Tail Lake Access Road near the Frozen Core Plant Pad - looking east



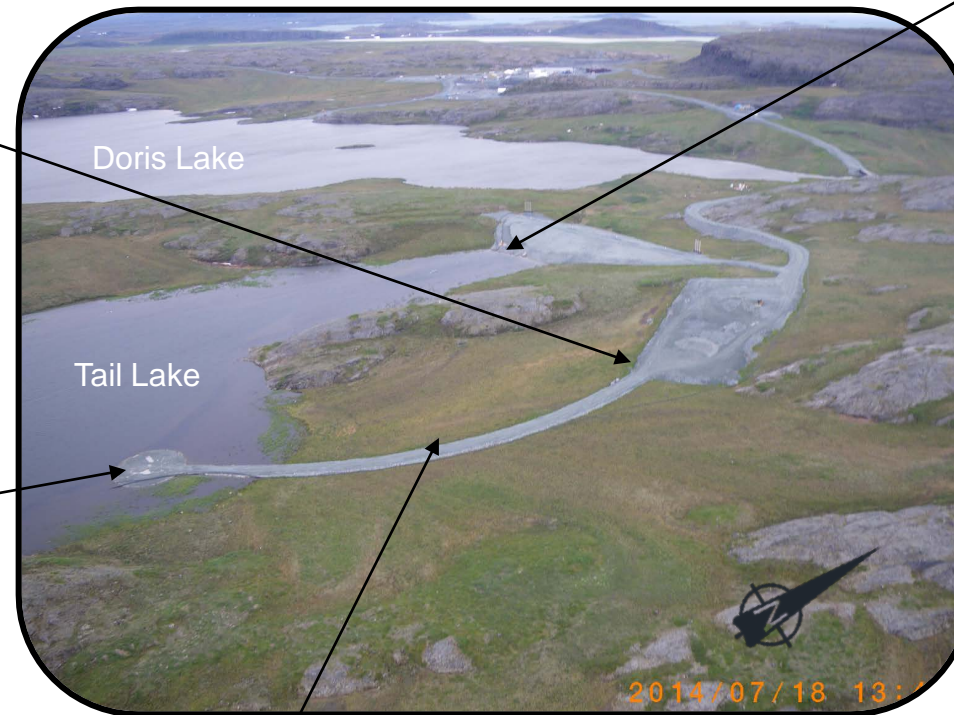
North end of Tail Lake – looking southwest



Pump station and water intake line located along the upstream toe at the west side of the North Dam




General surface condition of the Tail Lake Access Road turn-a-round – looking north along the Tail Lake Access Road alignment



Tension cracks on the south side of the Tail Lake Access Road near the Frozen Core Plant Pad



Aerial view of Tail Lake – looking northwest from the south end of Tail Lake

		2014 Geotechnical Inspection		
		Tail Lake Access Road		
Job No: 1CT022.001	HOPE BAY MINING LTD.	Date: Oct 2014	Approved: LW	Figure: 22
Filename: 2014GeotechInsp_rev00.pptx				