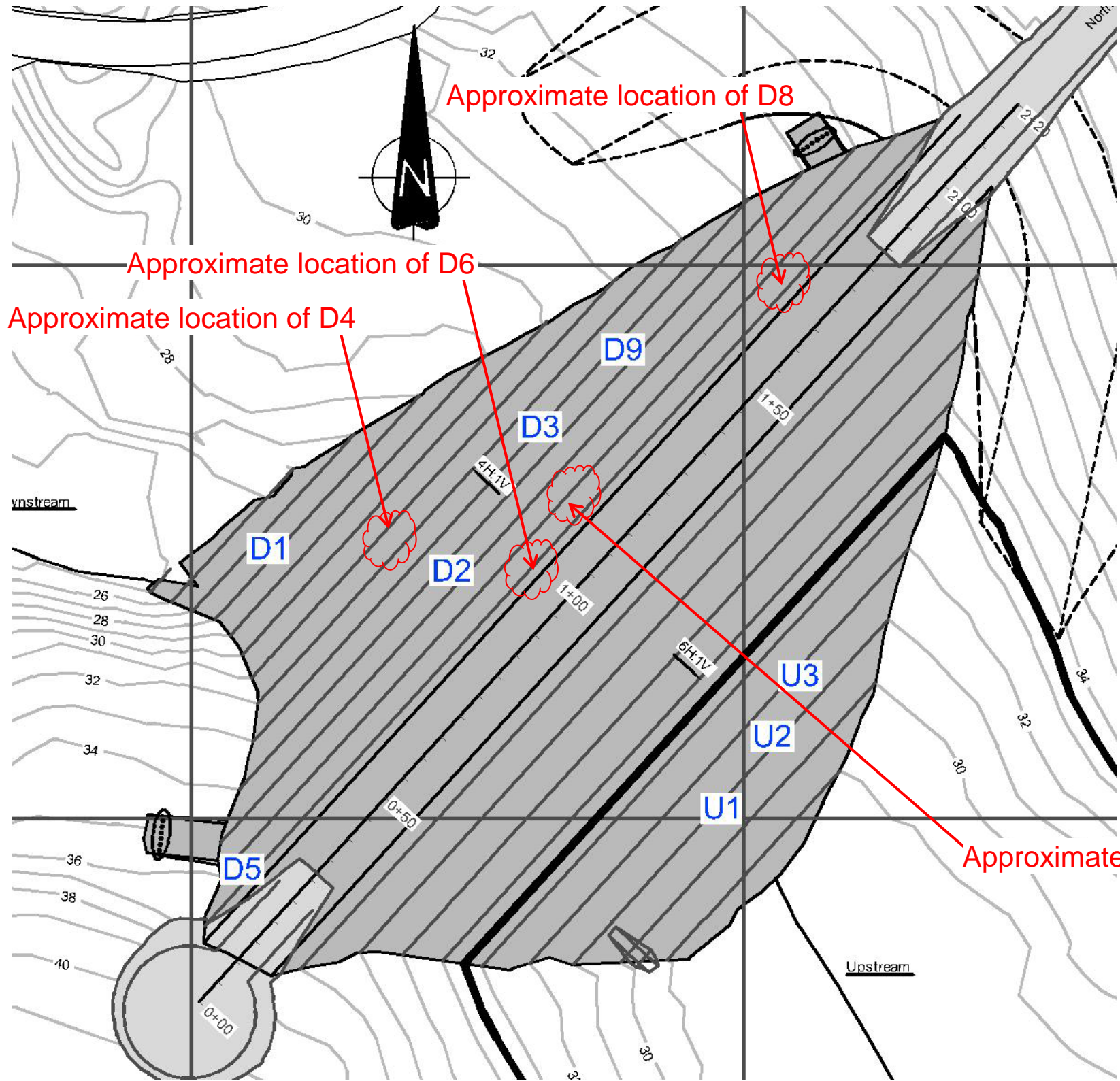


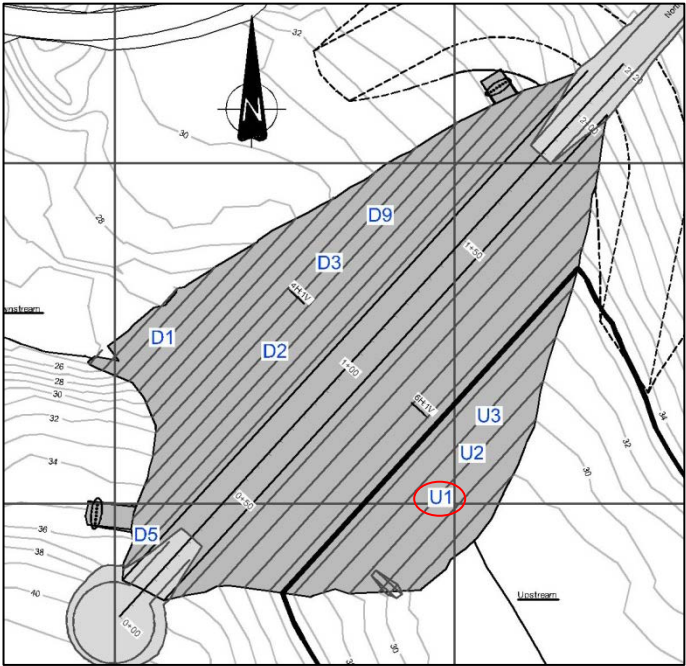
Appendix H: Depression Monitoring



ID	Location	Comments
U1	Upstream	Boundaries spray painted and ID given July 2014, was previously identified.
U2	Upstream	Boundaries spray painted and ID given July 2014, was previously identified.
U3	Upstream	Boundaries spray painted and ID given July 2014, was previously identified.
D1	Downstream	First noted in 2013 Annual Geotechnical Inspection
		September 1, 2014 - expanded towards the south
		September 20, 2014 - TMAC ESR noted the depression looks to have expanded, paint mark updated.
D2	Downstream	First noted in 2013 Annual Geotechnical Inspection
		September 14, 2014 - TMAC ESR noted that the depression may have expanded slightly
D3	Downstream	Identified during 2014 annual geotechnical inspection, spray painted and given ID.
		August 10, 2014 - larger area marked
D4	Downstream	First noted August 16, 2014 in weekly report prepared by TMAC ESR. Roughly 0.5x0.5 m area
D5	Downstream	First noted August 16, 2014 in weekly report prepared by TMAC ESR.
		TMAC ESR notes it could be animal burrows ~1x1 m wide disturbed area (August 2014)
D6	Downstream	First noted August 25, 2014 in weekly report prepared by TMAC ESR. 1.5x1.5 m area
		September 6, 2014 - Possible incremental sloughing (minimal)
D7	Downstream	First noted August 25, 2014 in weekly report prepared by TMAC ESR
D8	Downstream	First noted August 25, 2014 in weekly report prepared by TMAC ESR. Area with signs of erosion.
		September 20, 2014 - TMAC ESR noted depression looks to have expanded on top right. Difficult to tell from photos, due to snow (and unlabeled photos).
D9	Downstream	First noted September 14, 2014 in weekly report prepared by TMAC ESR

Notes:

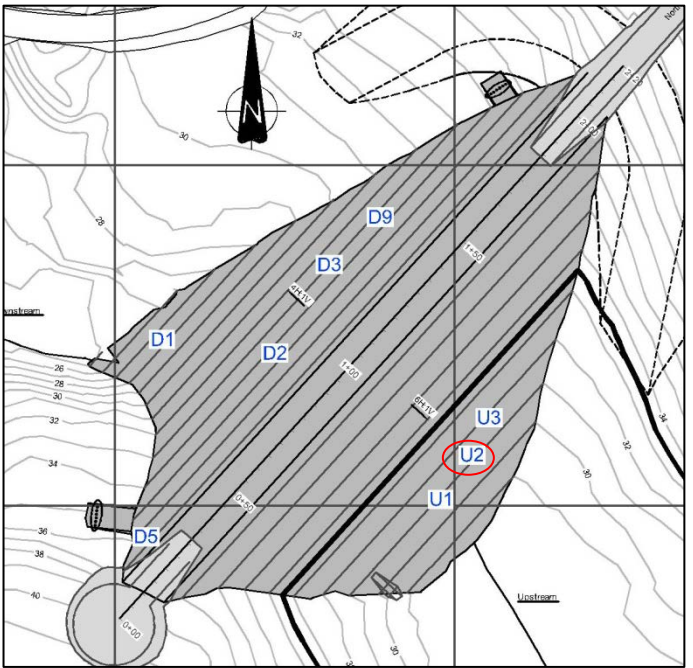
- 1. Depression locations are based on hand held GPS measurements, accuracy is at best +/- 4 m.
- 2. Depressions D6, D7 and D8 are not shown on figure as coordinates were not provided.
- 3. Depression D4 is not shown as coordinates provided are incorrect (not located on dam).
- 4. Depressions D4 through D8 were identified and marked by TMAC site personnel since July 2014.



Notes:

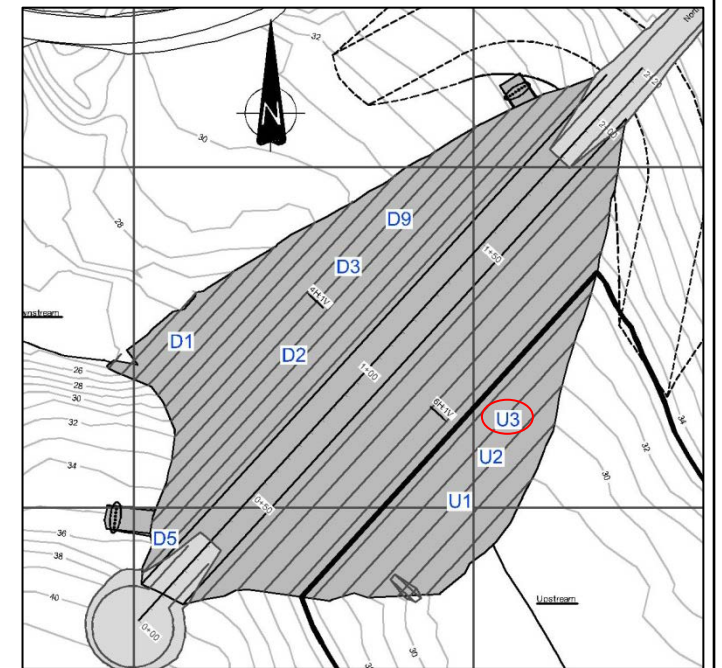
- 1. Depression locations are based on hand held GPS measurements, accuracy is at best +/- 4 m.
- 2. Most photos courtesy of TMAC site personnel

		2014 North Dam Geotechnical Inspection		
		Depression Tracking U1		
Job No: 1CT022.001 Filename: Ndam_DepressionTracking.pptx	HOPE BAY MINING LTD.	Date: Oct. 2014	Approved: MMM	Figure: H.2



- Notes:**
- 1. Depression locations are based on hand held GPS measurements, accuracy is at best +/- 4 m.
 - 2. Most photos courtesy of TMAC site personnel

		2014 North Dam Geotechnical Inspection		
		Depression Tracking U2		
Job No: 1CT022.001 Filename: Ndam_DepressionTracking.pptx	HOPE BAY MINING LTD.	Date: Oct. 2014	Approved: MMM	Figure: H.3



Notes:

1. Depression locations are based on hand held GPS measurements, accuracy is at best +/- 4 m.
2. Most photos courtesy of TMAC site personnel



Job No: 1CT022.001
Filename: Ndam_DepressionTracking.pptx



HOPE BAY MINING LTD.

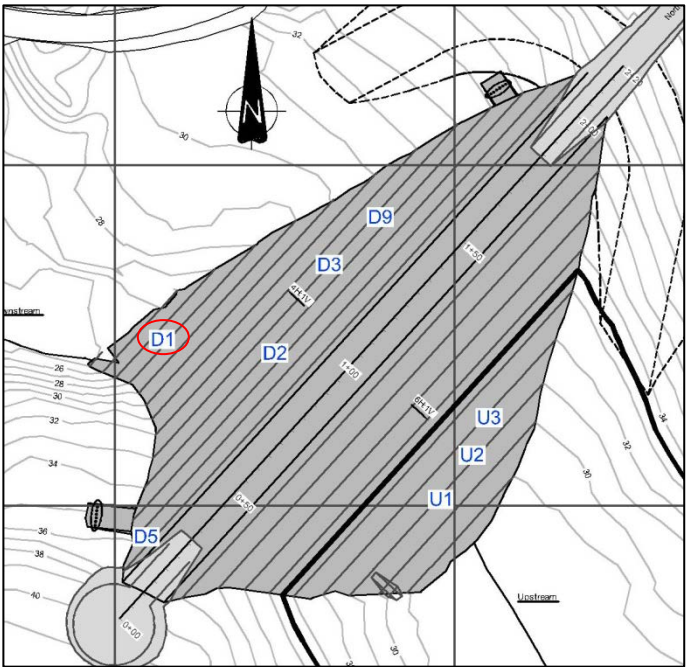
2014 North Dam Geotechnical Inspection

**Depression Tracking
U3**

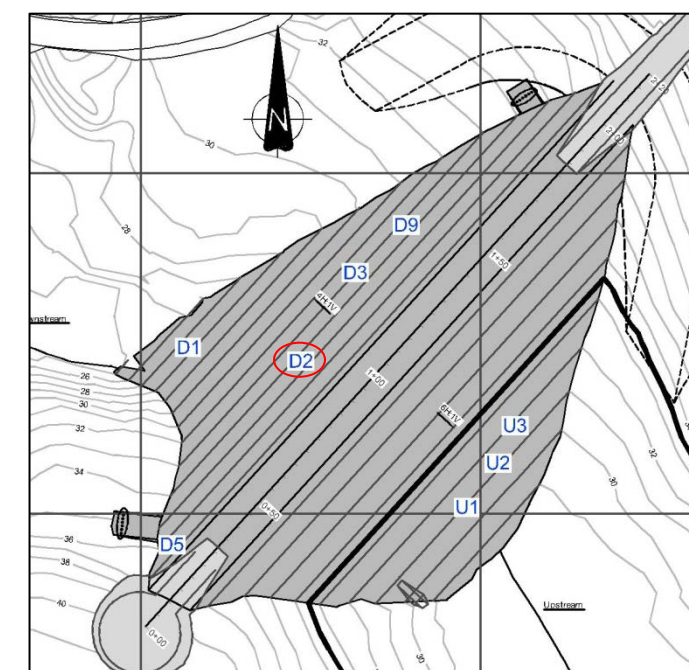
Date: Oct. 2014	Approved: MMM	Figure: H.4
--------------------	------------------	-----------------------



Expanded to the south, note the faded pink paint mark in the center



- Notes:**
- 1. Depression locations are based on hand held GPS measurements, accuracy is at best +/- 4 m.
 - 2. Most photos courtesy of TMAC site personnel



Notes:

1. Depression locations are based on hand held GPS measurements, accuracy is at best +/- 4 m.
2. Most photos courtesy of TMAC site personnel



Job No: 1CT022.001
Filename: Ndam_DepressionTracking.pptx



HOPE BAY MINING LTD.

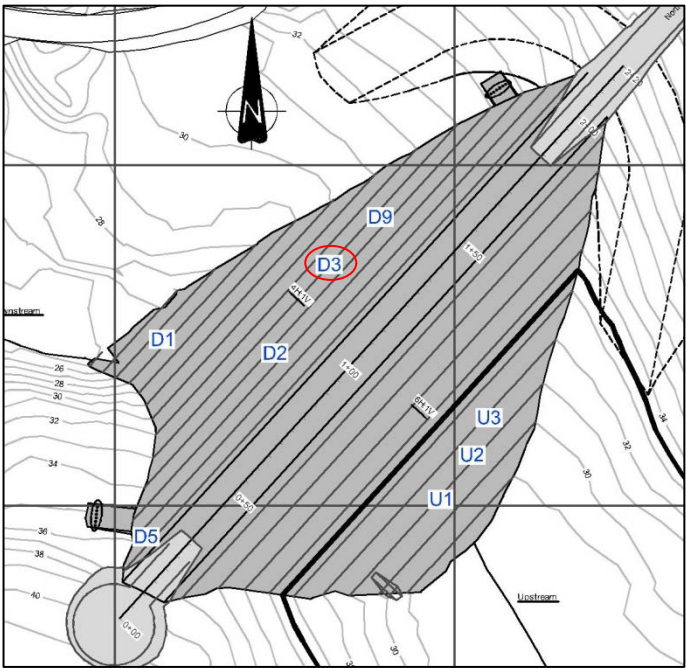
2014 North Dam Geotechnical Inspection

**Depression Tracking
D2**

Date: Oct. 2014	Approved: MMM	Figure: H.6
--------------------	------------------	-----------------------

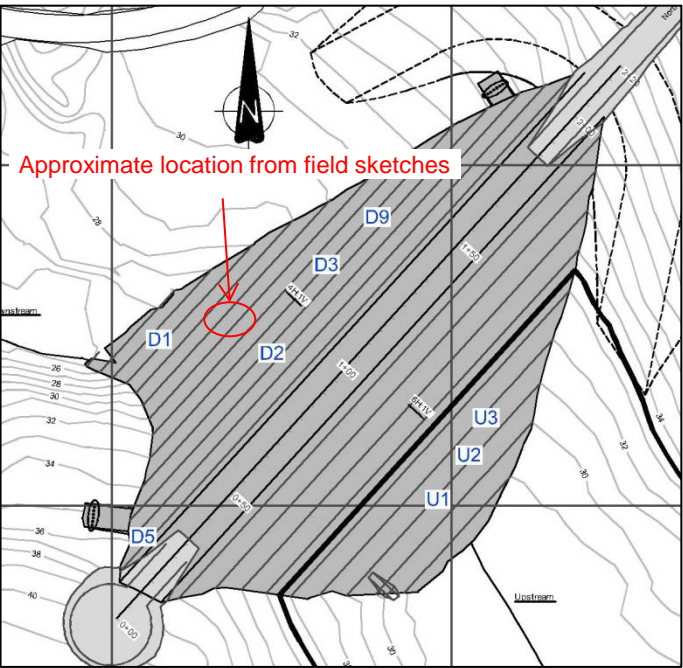


September 6, 2014



- Notes:**
- 1. Depression locations are based on hand held GPS measurements, accuracy is at best +/- 4 m.
 - 2. Most photos courtesy of TMAC site personnel

		2014 North Dam Geotechnical Inspection		
		Depression Tracking D3		
Job No: 1CT022.001 Filename: Ndam_DepressionTracking.pptx	HOPE BAY MINING LTD.	Date: Oct. 2014	Approved: MMM	Figure: H.7

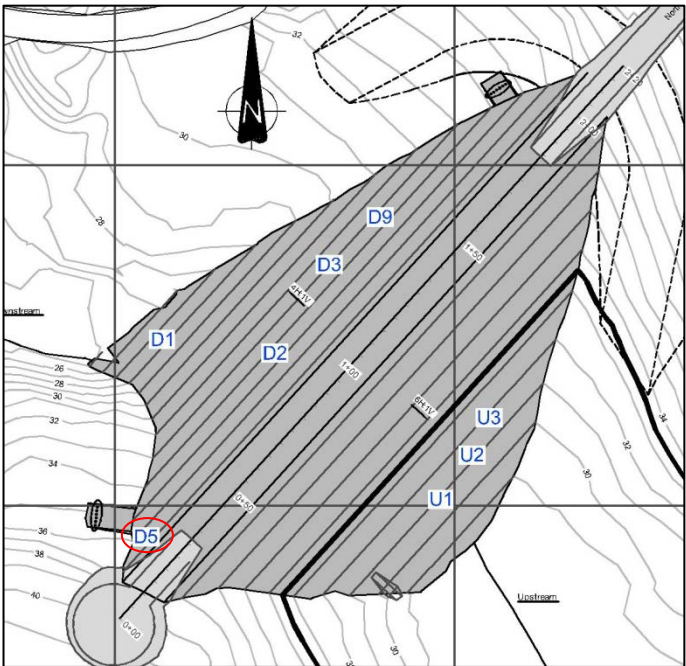


- Notes:**
- 1. Depression locations are based on hand held GPS measurements, accuracy is at best +/- 4 m.
 - 2. Most photos courtesy of TMAC site personnel

		2014 North Dam Geotechnical Inspection		
		Depression Tracking D4		
Job No: 1CT022.001 Filename: Ndam_DepressionTracking.pptx	HOPE BAY MINING LTD.	Date: Oct. 2014	Approved: MMM	Figure: H.8



August 16, 2014



- Notes:**
- 1. Depression locations are based on hand held GPS measurements, accuracy is at best +/- 4 m.
 - 2. Most photos courtesy of TMAC site personnel

		2014 North Dam Geotechnical Inspection		
		Depression Tracking D5		
Job No: 1CT022.001 Filename: Ndam_DepressionTracking.pptx	HOPE BAY MINING LTD.	Date: Oct. 2014	Approved: MMM	Figure: H.9