

Hackett River Camp, looking to west



Some Facts About Sabina

- Canadian public Silver Company.
- Plans to grow the Company to mid tier producer status through development of the Hackett River Silver-zinc Project.
- Positive Preliminary Economic Assessment on Hackett River completed March 2007 by Wardrop Engineering (in accordance with NI 43-101).
- Senior management has proven track record in building and operating large scale projects in difficult locations.
- Company is well funded to complete all technical studies through to bankable Feasibility Study as well as to complete all permitting activities.



Hackett River



**AT THE DEVELOPMENT THRESHOLD
HACKETT RIVER PRE-FEASIBILITY
UNDERWAY**

Project Area Potential

47 million Tonnes of Ore

Including:

- 205 million oz silver
- 4.3 billion lbs zinc
- 330 million lbs copper
- 644 million lbs lead
- 433,000 oz gold



Highlights

- Development model is to construct an all-season road from the Project to tidewater for concentrate delivery and operations resupply (if BIPR is not available).
- Project design includes a 13.6 year mine life at a milling rate of 10,000 tonnes per day.
- Average annual production of:
12.4 million ounces silver
147,300 tonnes zinc
9400 tonnes copper; 16,800 tonnes lead; 17,200 ounces gold
- Potential employment of between 250 to 325 people.

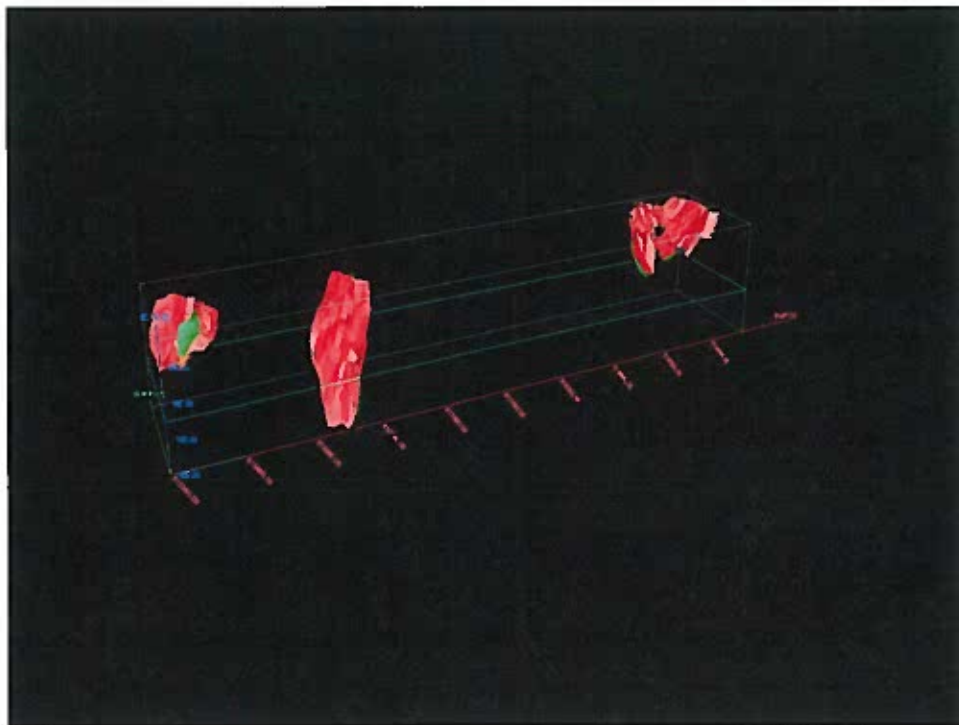




Mineral Resources

Table 1. Hackett River Mineable Mineral Resource*

Sources	Resource Class	Tonnes (X 1000)	Grade					Contained Metals				
			Silver (g/T)	Zinc (%)	Copper (%)	Lead (%)	Gold (g/T)	Silver (Mil oz)	Zinc (Mil lb)	Copper (Mil lb)	Lead (Mil lb)	Gold (Mil oz)
Open Pit	Indicated	25,615	126.4	4.07	0.38	0.58	0.33	104.10	2,298	215	328	0.269
	Inferred	3,375	99.7	2.57	0.37	0.37	0.25	10.82	192	28	27	0.027
Underground	Indicated	14,517	185.7	5.87	0.26	0.89	0.25	86.69	1,877	84	285	0.114
	Inferred	5,421	186.3	4.71	0.23	0.67	0.34	32.46	563	28	80	0.057

* CIM Definition Standards on Mineral Resources and Mineral Reserves were used to estimate the Hackett River NI 43-101 compliant mineable mineral resource based on a Preliminary Economic Assessment. Cutoffs are US\$19.94/tonne NSR for open pit, US\$9.94/tonne NSR for Boot Lake underground, US\$4.94/tonne NSR for Main Zone and East Cleaver underground, respectively. Dilution and mining losses were considered in mineable mineral resource calculations.





Work Completed in 2007

- 17,107 m drilling program completed in 65 holes, targeted at infill drilling to increase resource confidence level.
- Drilled exploration targets, as well as geotechnical support drilling, and a second thermistor hole to test under Camp Lake/Main Zone.
- AMEC appointed as consultants to undertake Pre-Feasibility Study.
- Pre Feasibility Study has commenced and work is underway on geologic model revision and resource recalculation.
- RESCAN appointed as environmental consultant and aggressive program of baseline work carried out this season.
- Project Proposal drafted by RESCAN.



Work Completed in 2007...cont'd

- Continued metallurgical testing to upgrade recoveries in support of Pre-Feasibility study due out Third Quarter 2008.
- Conducted progressive drill site reclamation and cut off old casings.
- Updating the mineral resource model and resource estimate.
- Collected detailed air photo coverage over several preliminary spur road options as part of the route assessment to connect BIPR to Hackett River resource area .
- Commenced environmental baseline work at the Project site, along the spur road to the BIPR road and at the concentrate storage and load out at the Bathurst Inlet port site.



Phase 1 of Community Consultation: Community Meetings Initiated

Location	Date	Persons Attending
Cambridge Bay	June 18, 2007	44
Gjoa Haven	June 19, 2007	99
Bathurst Inlet / Bay Chimo (Residents from Bay Chimo were flown to Bathurst Inlet for the meeting)	July 23, 2007	38 (8 from Bay Chimo)
Kugluktuk	October 17, 2007	169



Community Consultation

Visits were made to various organizations and agencies in 2007

Mayor and Council	Cambridge Bay
NIRB	Cambridge Bay
Kitikmeot Inuit Association (KIA)	Cambridge Bay
Kitikmeot Corporation	Cambridge Bay
Nunavut Water Board	Gjoa Haven
Director of Lands, Environment and Resources, KIA	Kugluktuk



Inuit Participation

- Sixteen Inuit employees worked at Hackett River camp in 2007,
- Bob Kohoktak, Doris Keyok, Martin and Chad McCallum, Frank Ipakohak, Fred Bob Novoligak, Ernie and Gary Kukilukak, OJ Bernhardt, Ramona and Adam Kikpak, Andy Topilak, Lucy Haniliak, Tommy Akoluk and George and Mabel Angohiatok.
- Inuit employee gross wages totaled \$247,861.00, while a further \$8,400 was paid to Kingaunmiut Arctic Services for work done by Lucy for Rescan and Sabina.
- Inuit employees worked 1092 days out of 7317 man-days total.
- Inuit employees worked 14.5% of total days worked in camp.
- First Aid and WHMIS training completed for all employees.



Bob Kohoktak working on a new building in camp



Frank Ipakohak collecting water samples



Bathurst Inlet Port and Load Out Site



Support crew from Bathurst Inlet working at the proposed port site



Business with Firms Listed on Inuit Firm Registry

	Company	Amount
Aqsaqniq Air Ltd.	Taloyoak	\$692,468.00
Kingaunmiut Arctic	Yellowknife	15,494.00
Kitikmeot Helicopters	Cambridge Bay	\$1,416,691.00
Nunavut Expediting	Cambridge Bay	\$119,648.00
Top of the World Travel	Yellowknife	86,717.00
Lodging and associated costs	Cambridge Bay, Gjoa Haven, Kugluktuk	5532.00
	<i>Grand Total</i>	<i>\$2,336,550.00</i>



Inuit Owned Business Participation

- Seven Inuit owned firms provided services to Sabina in 2006.
- Business with Inuit Owned Firms totaled \$2,336,550 and accounted for 16.7% of the 2006 Hackett River project expenditures.
- 2007 Hackett River project expenditures totaled \$13,976,396.
- Additional expenditures of \$87,548.00 with Canadian North, a Norterra Group company 50% Inuit Owned through Nunasi Corp.
- Totals don't include business done with Kitikmeot Foods, Qikiqtaq Co-op Ltd., Inuk Taxi & Delivery, and Inuinaktun Translations.
- Totals also don't include business done any hotels or other lodging across Nunavut, nor restaurant or other associated costs.




Anticipated 2008 Developments

- AMEC Engineering will re-issue a revised geologic model and resource calculations in the first quarter of 2008.
- AMEC Engineering to complete a Prefeasibility Study, due out in third quarter 2008.
- Rescan will continue the baseline environmental studies throughout the area of influence for the Hackett River Project.
- Sabina will continue with the definition and delineation of the core deposits, and follow up on the promising results from potential satellite deposit at Jo Zone.
- A surface mapping and sampling program will be undertaken over much of the central area of the property, and possibly over some regional targets, to aid with potential regional exploration drilling.
- Continued reclamation of previous drill sites and any other previous disturbances will be completed.
- New dual stage, forced air incinerator will be installed on site.



Muskox pair at Hackett River

 SABINA <small>SILVER CORPORATION</small>	
Project Implementation Schedule	
Comprehensive Environmental Baseline Study	2007 and 2008
Pre-feasibility Study	Oct 2007 to Aug 2008
Feasibility Study	Sept 2008 to Jun 2009
EIS Submission - Draft - Final	February 2009
	Dec 2009
Water License Application	Apr 2010
Receipt of Construction Authorization	Sept 2011
Mine Construction/Mobilization	Oct 2011
Construction Period	Nov 2011 to Nov 2013
Commissioning/Production Start	Last Qtr 2013

