

The Hackett River Project –



- ❑ Base metal mine GOLD, SILVER, LEAD, COPPER, ZINC
- ❑ BIPR or other road/port system

What does the NIRB do during a Review?

We assess environmental impacts...



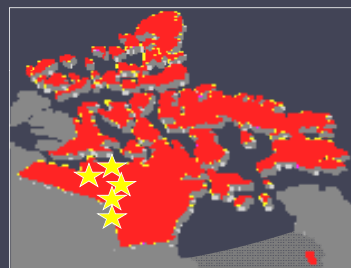
What does the NIRB do during a Review?

We also assess socio-economic impacts...

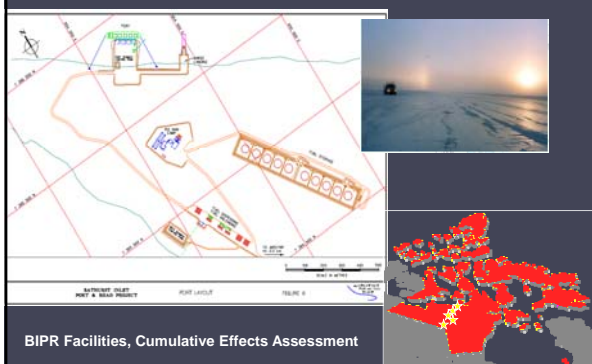


What does the NIRB do during a Review?

Assesses Cumulative Impacts



Minister's Directions



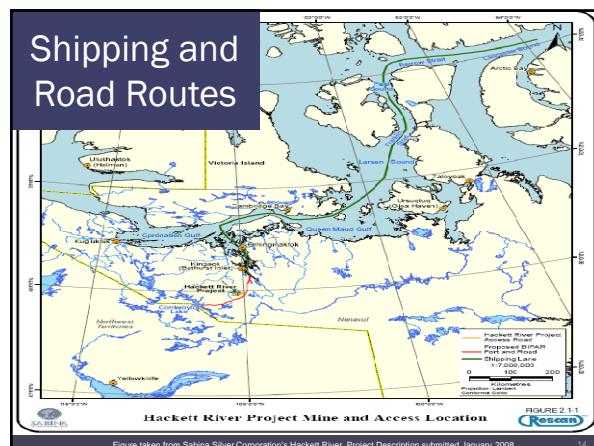
What is Scoping?



One of the first ways the NIRB identifies which components of the environment may be impacted by a project, and what people think about the proposed Project

Draft Scope - Project Components

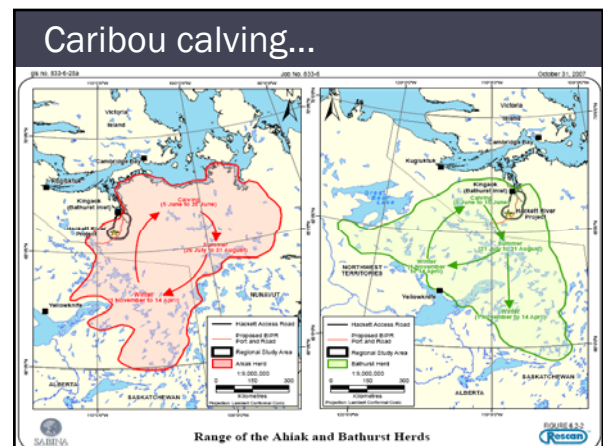
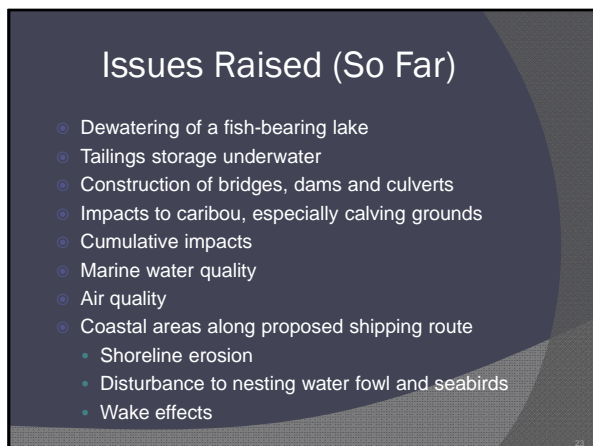
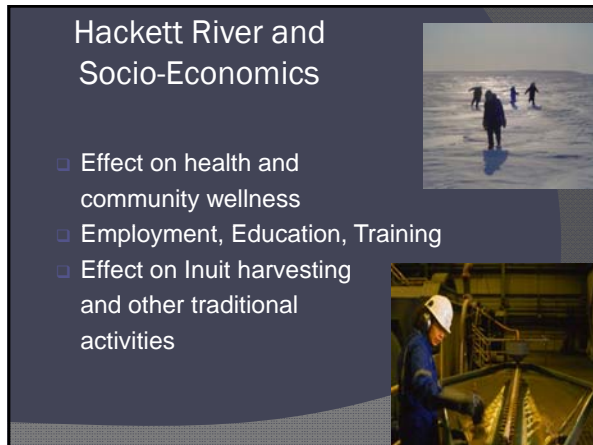
- Bathurst Inlet Port – Proposed BIPR Facilities
- Bathurst Inlet Port – Sabina Facilities
- Mobilization and Shipping
- Roads
- Airstrip
- Hackett River Mine site



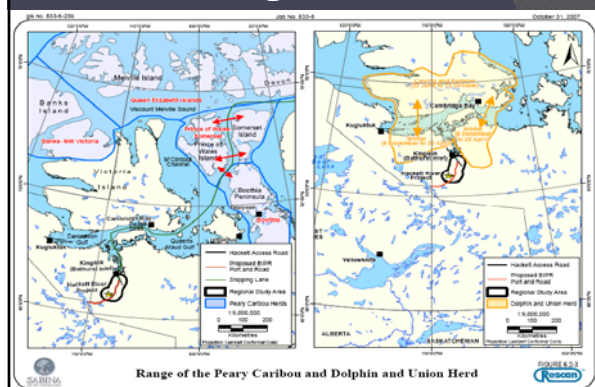
Sabina's Road Operations

Hackett River Project Components

Hackett River Mining Operations



Caribou calving...



Draft Scope – Environmental & Socio-Economic Components

- Air Quality
- Water Quality
- Fish and ocean animals
- Species at Risk
- Birds
- Wildlife
- Traditional Knowledge
- Landforms and soils
- Vegetation
- Socio-economics and human well being
- Cumulative effects
- Accidents and malfunctions
- Transboundary effects
- Monitoring and post-project analysis (PPA)

What about....



Where do we go from here?

- Scoping Report
- Environmental Impact Statement



Your Opportunity

- What do you think about the Project?
- What about the effects this Project might have on the land, animals and people?
- Do you have any questions or concerns regarding the Project?

Questions?

