

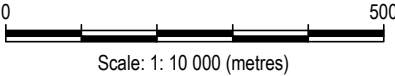
NOTES:

1. LAYOUTS ARE APPROXIMATE, AND MAY NOT REFLECT ACTUAL SIZE AND LOCATIONS
2. LOCATIONS OF MONITORING STATIONS ARE CONCEPTUAL, ACTUAL LOCATIONS MAY VARY
3. FOOTPRINTS OF WASTE ROCK PILES, COARSE PK STOCKPILES, AND ORE STOCKPILES ARE SHOWN IN MAXIMUM LIMITS, ACTUAL FOOTPRINTS MAY VARY

4. LOCATIONS OF SWF-09, 10 AND 11 WILL BE DETERMINED ON-SITE IN 2011

MONITORING LOCATIONS:

- SWF, SITE WATER FLOW MONITORING LOCATION
- SWQ, SITE WATER QUALITY MONITORING LOCATION
- SPG, SEEPAGE SURVEY LOCATION



CLIENT



A TETRA TECH COMPANY

STATUS
ISSUED FOR USE

GENERAL MONITORING PLAN
JERICO DIAMOND MINE, NUNAVUT

CATCHMENT AREAS AND
MONITORING STATIONS PLAN

PROJECT NO.
E14101118

DWN
DBD

CKD
WL

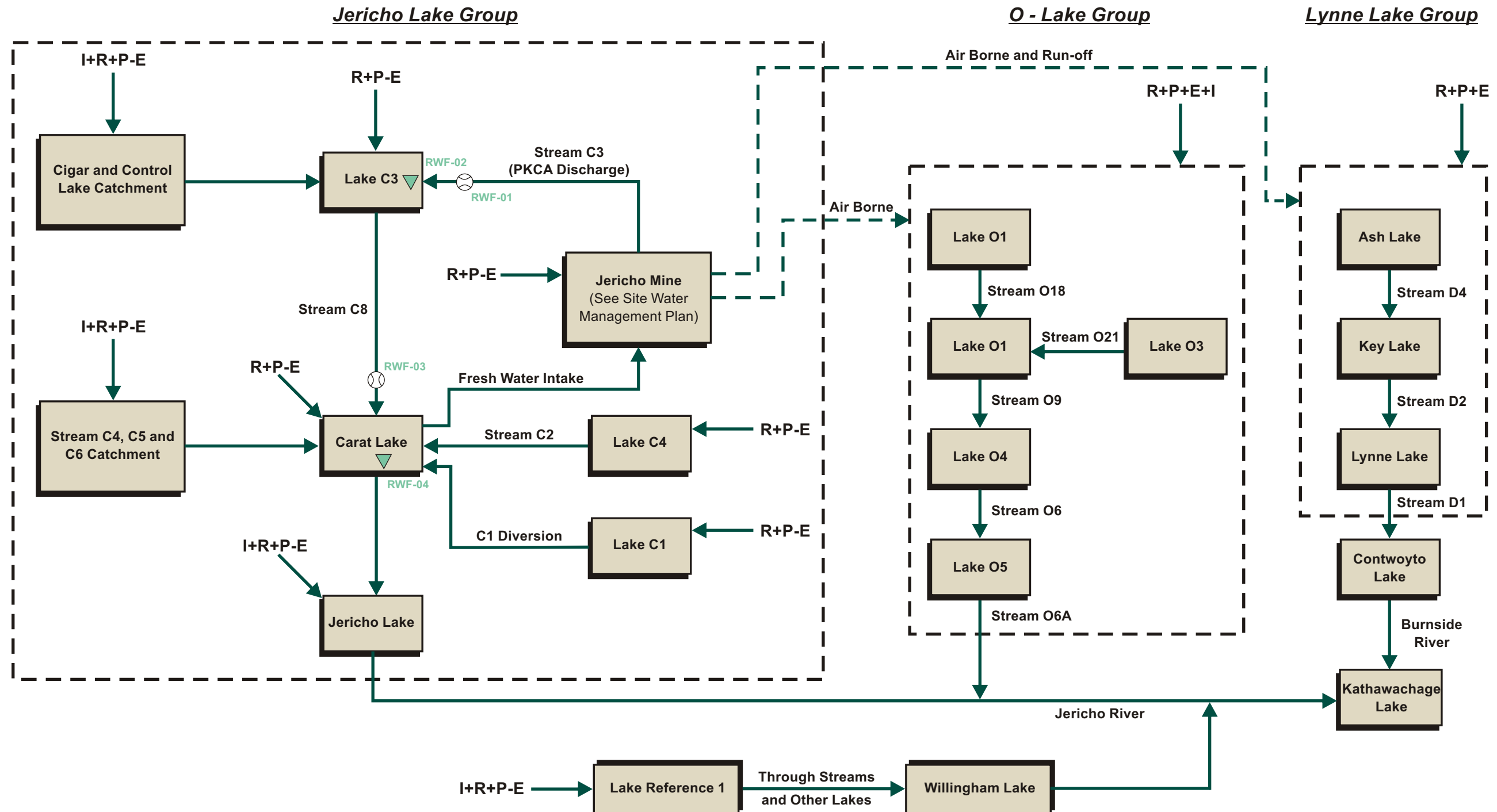
REV
0

OFFICE
EBA-EDM

DATE
January 31, 2011

Figure 3

E14101118_Figure 5_PKCA Management Plan.cdr



LEGEND

- Sub-Watershed in Area of Impact
- Flow
- Potential Contaminant Pathway
- P - Precipitation
- R - Surface Runoff

- E - Evaporation/Transpiration
- I - Inflow
- O - Outflow
- Gw - Groundwater Inflow
- Sp - Seepage
- ⊗ - Stream Flow Monitoring Location
- ▼ - Water Level Monitoring Location

STATUS
ISSUED FOR USE

CLIENT

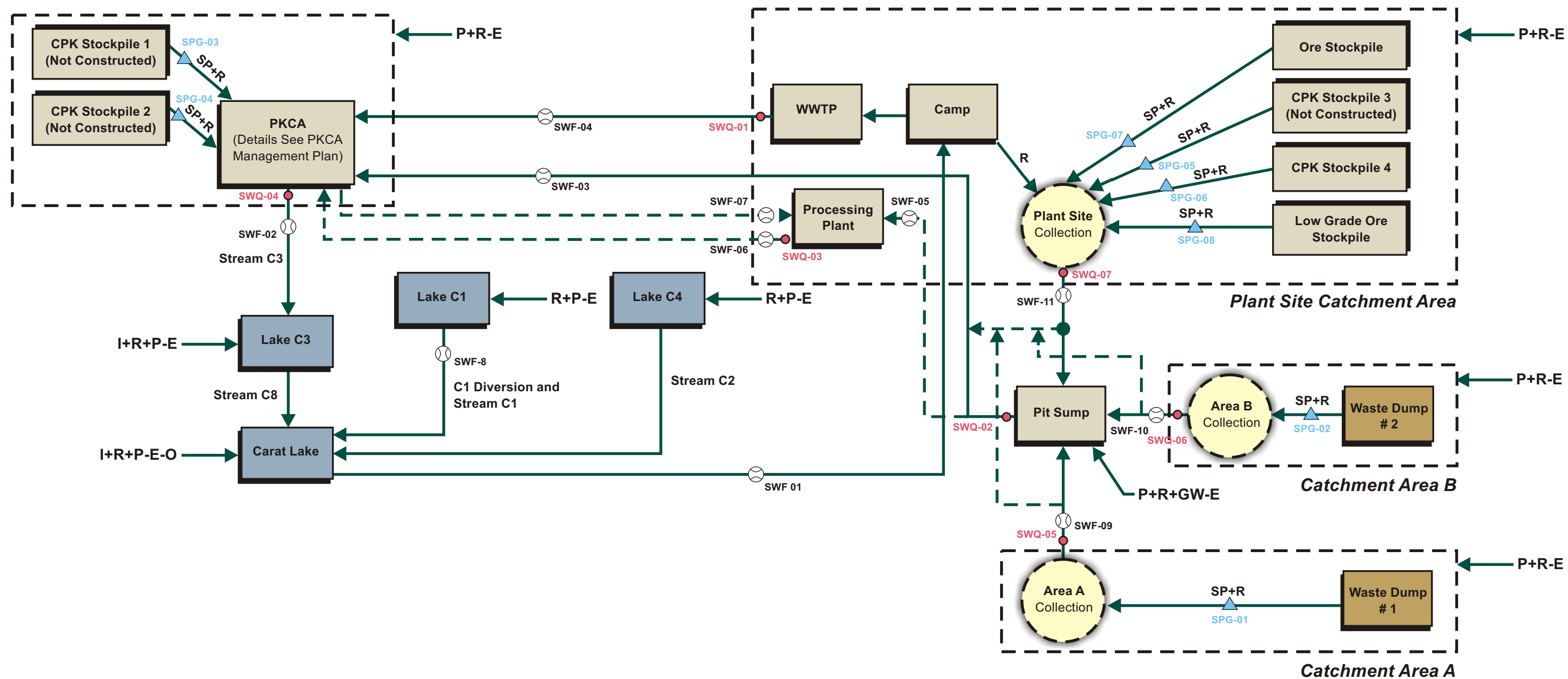


GENERAL MONITORING PLAN JERICO DIAMOND MINE, NUNAVUT

RECEIVING WATERBODIES FLOWSHEET

PROJECT NO. E14101118	DWN DBD	CKD WL	APVD WL	REV 0
OFFICE EBA-EDM	DATE January 31, 2011			

Figure 4

**LEGEND**

- Sub-Watershed in Area of Impact

- Flow
- Potential Flow Path

P - Precipitation

R - Surface Runoff

E - Evaporation/Transpiration
 I - Inflow
 O - Outflow
 Gw - Groundwater Inflow
 Sp - Seepage
 (Flow Meter Symbol) - Flow Meter
 (SWQ Symbol) - SWQ Water Quality Monitoring Location
 (SPG Symbol) - Seepage Survey Location

Area A Collection : Collector Ditch or Potential Pond A
 Area B Collection : Collector Ditch or Potential Pond B
 Area C Collection : East Sump or Potential Pond C

STATUS
 ISSUED FOR USE

CLIENT


**GENERAL MONITORING PLAN
 JERICO DIAMOND MINE, NUNAVUT**
**SITE WATER MANAGEMENT
 FLOWSHEET**

PROJECT NO. E14101118	DWN DBD	CKD WL	APVD WL	REV 0
OFFICE EBA-EDM	DATE January 31, 2011			

Figure 5