

NOTES:

- LAYOUTS ARE APPROXIMATE, AND MAY NOT REFLECT ACTUAL SIZE AND LOCATIONS
- FOOTPRINTS OF WASTE ROCK PILES, COARSE PK STOCKPILES, AND ORE STOCKPILES ARE SHOWN IN MAXIMUM LIMITS, ACTUAL FOOTPRINTS MAY VARY

0 500
Scale: 1: 10 000 (metres)

STATUS
ISSUED FOR USE

CLIENT



WASTE ROCK MANAGEMENT PLAN
JERICO DIAMOND MINE, NUNAVUT

SITE INFRASTRUCTURE PLAN

PROJECT NO.
E14101118

OFFICE
EBA-EDM

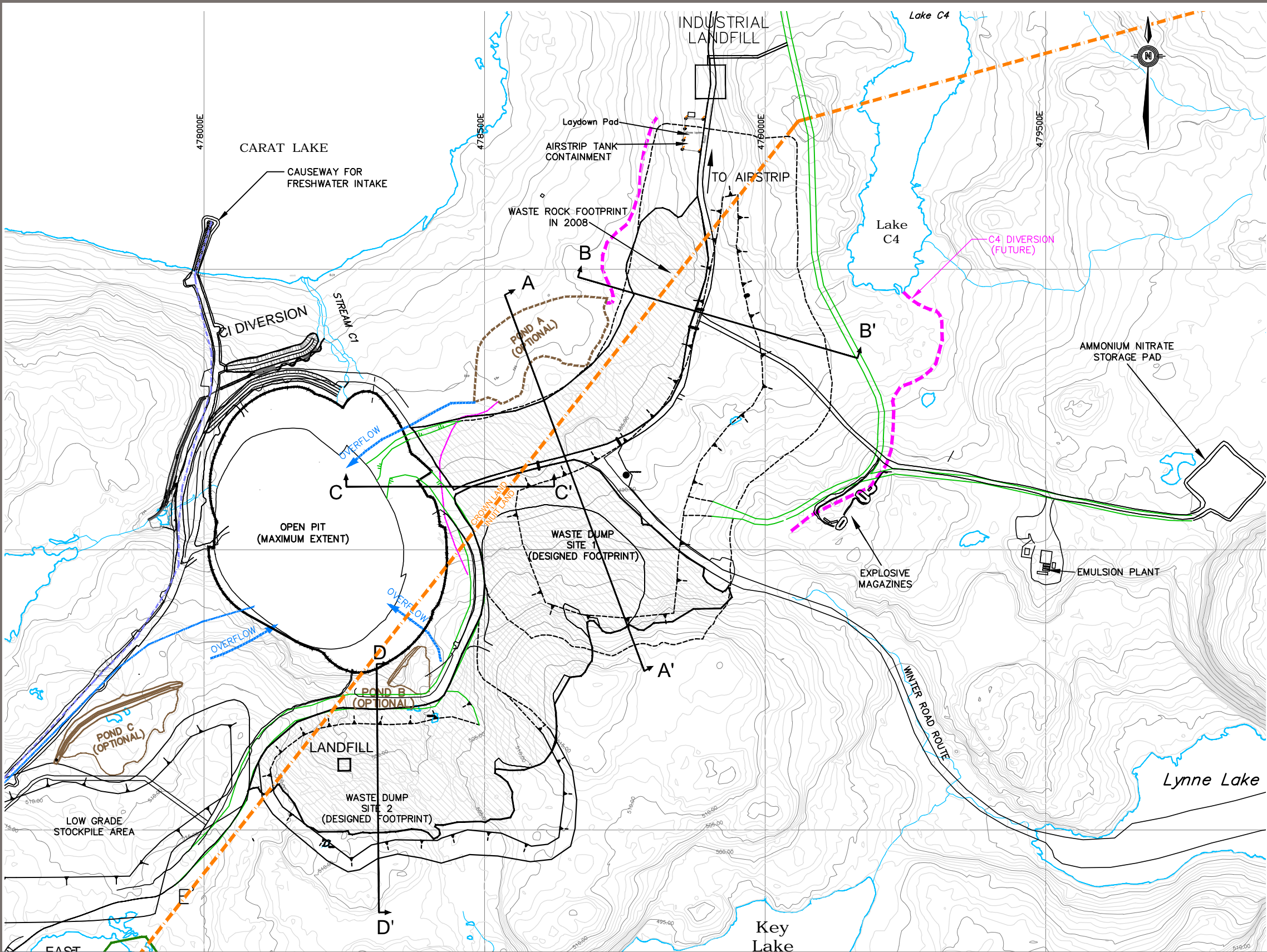
DWN
DBD/TK

DATE
February 25, 2011

CKD
WL

REV
0

Figure 2



- NOTES:
1. THE LAYOUTS OF THE WASTE DUMPS AND STOCKPILES ARE APPROXIMATE AND HAVE BEEN BASED ON EXISTING TOPOGRAPHIC DATA.
 2. IN RELATIVELY FLAT AREAS WHERE THE DUMPS ARE CLOSE TO THE ASSUMED CATCHMENT LIMIT, GROUND SURVEY METHODS WILL BE USED TO ACCURATELY DEFINE THE CATCHMENT LIMIT.

NOTES

1. ORIGINAL DRAWING FROM WASTE ROCK MANAGEMENT PLAN, PART 1 & 2 (SRK, 2005 and 2006)

STATUS

ISSUED FOR USE

CLIENT

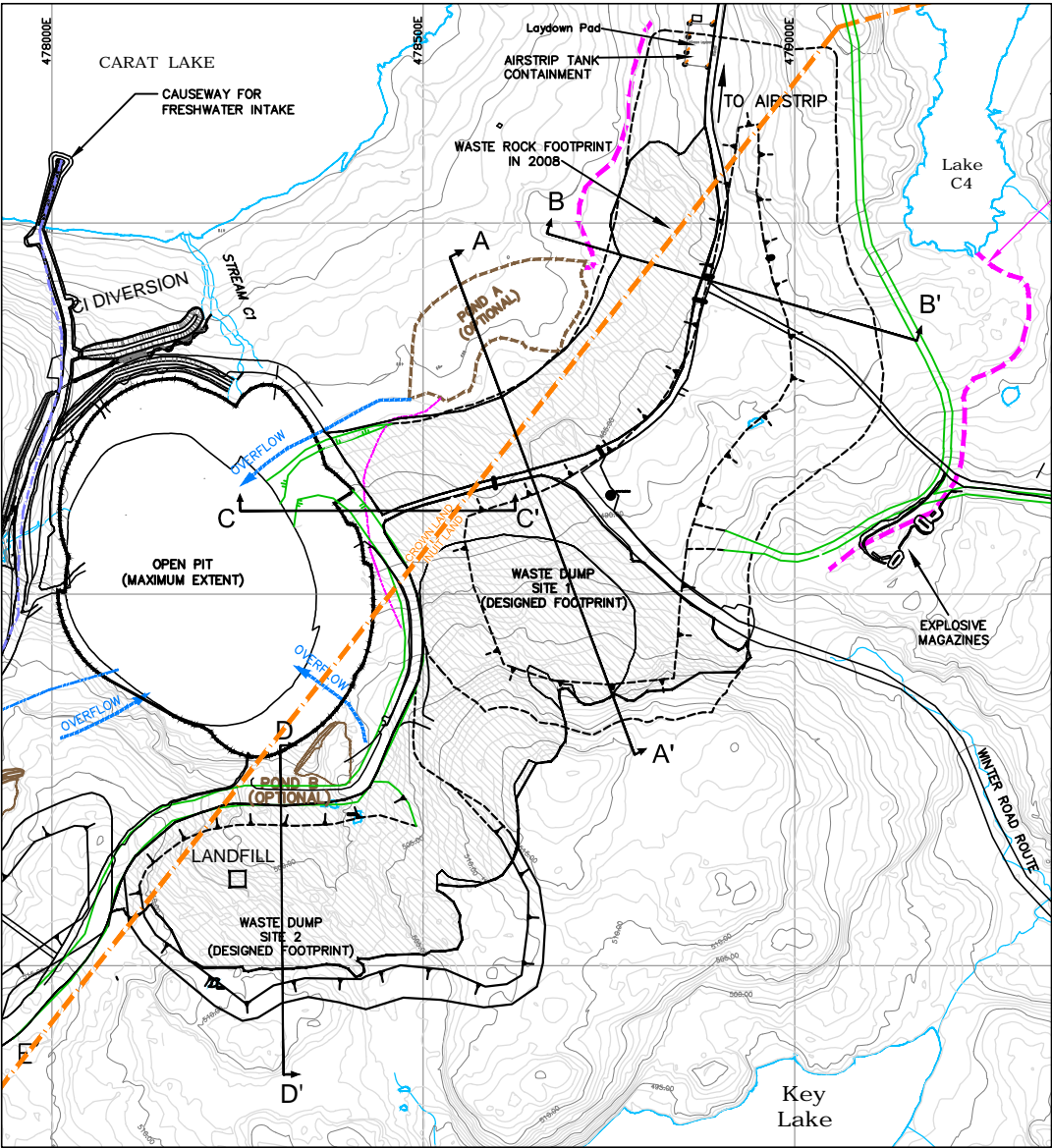
 SHEAR
DIAMONDS LTD.

 eba
A TETRA TECH COMPANY

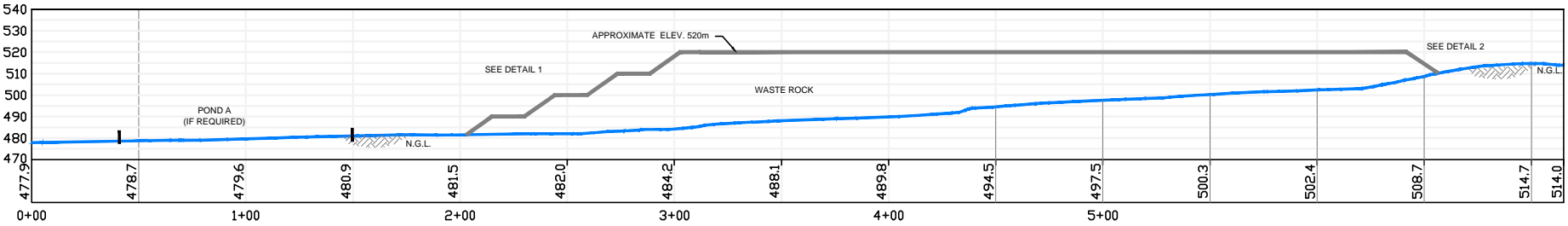
WASTE ROCK MANAGEMENT PLAN
JERICO DIAMOND MINE, NUNAVUT

LAYOUT OF WASTE DUMPS

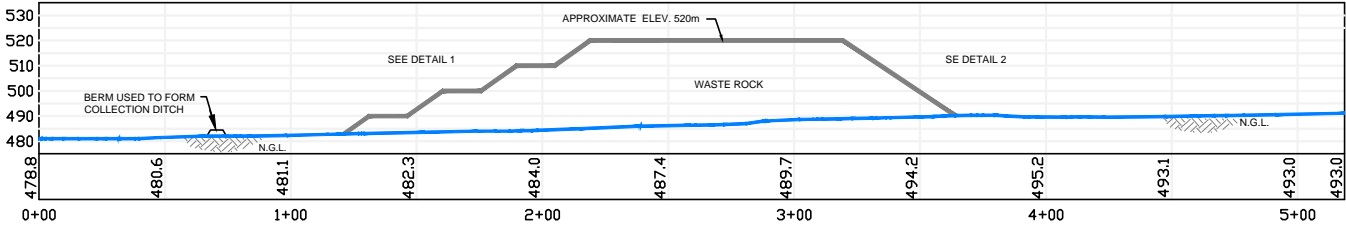
PROJECT NO. E14101118	DWN MM	CKD WL	REV 0	Figure 3
OFFICE EBA-EDM	DATE February 28, 2011			



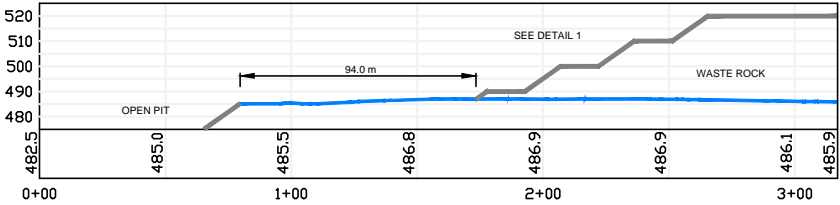
0 500
Scale: 1: 10 000 (metres)



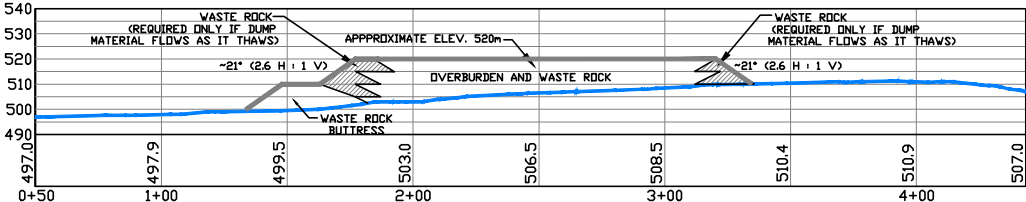
SECTION A - A' (WASTE DUMP SITE 1)
1:3000



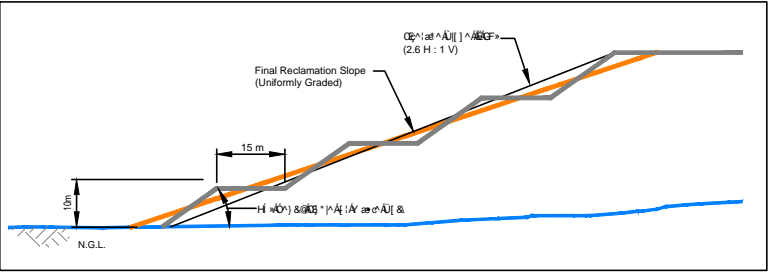
SECTION B - B' (WASTE DUMP SITE 1)
1:3000



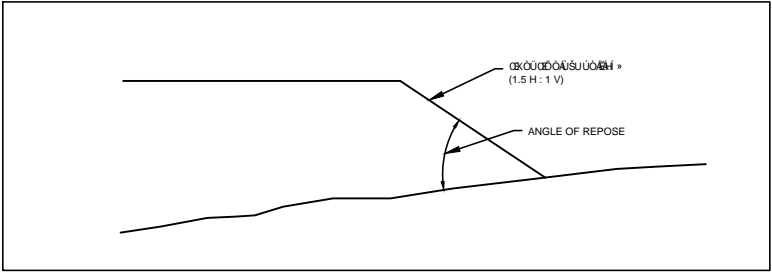
SECTION C - C' (WASTE DUMP SITE 1)
1:3000



SECTION D - D' (WASTE DUMP SITE 2)
1:3000



DETAIL 1 - TYPICAL DOWNSTREAM SLOPE (N.T.S.)



DETAIL 2 - TYPICAL UPSTREAM SLOPE (N.T.S.)

NOTES
1. ORIGINAL DRAWING FROM WASTE ROCK MANAGEMENT PLAN,
PART 1 & 2 (SRK, 2005 and 2006)

STATUS
ISSUED FOR USE

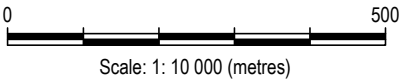
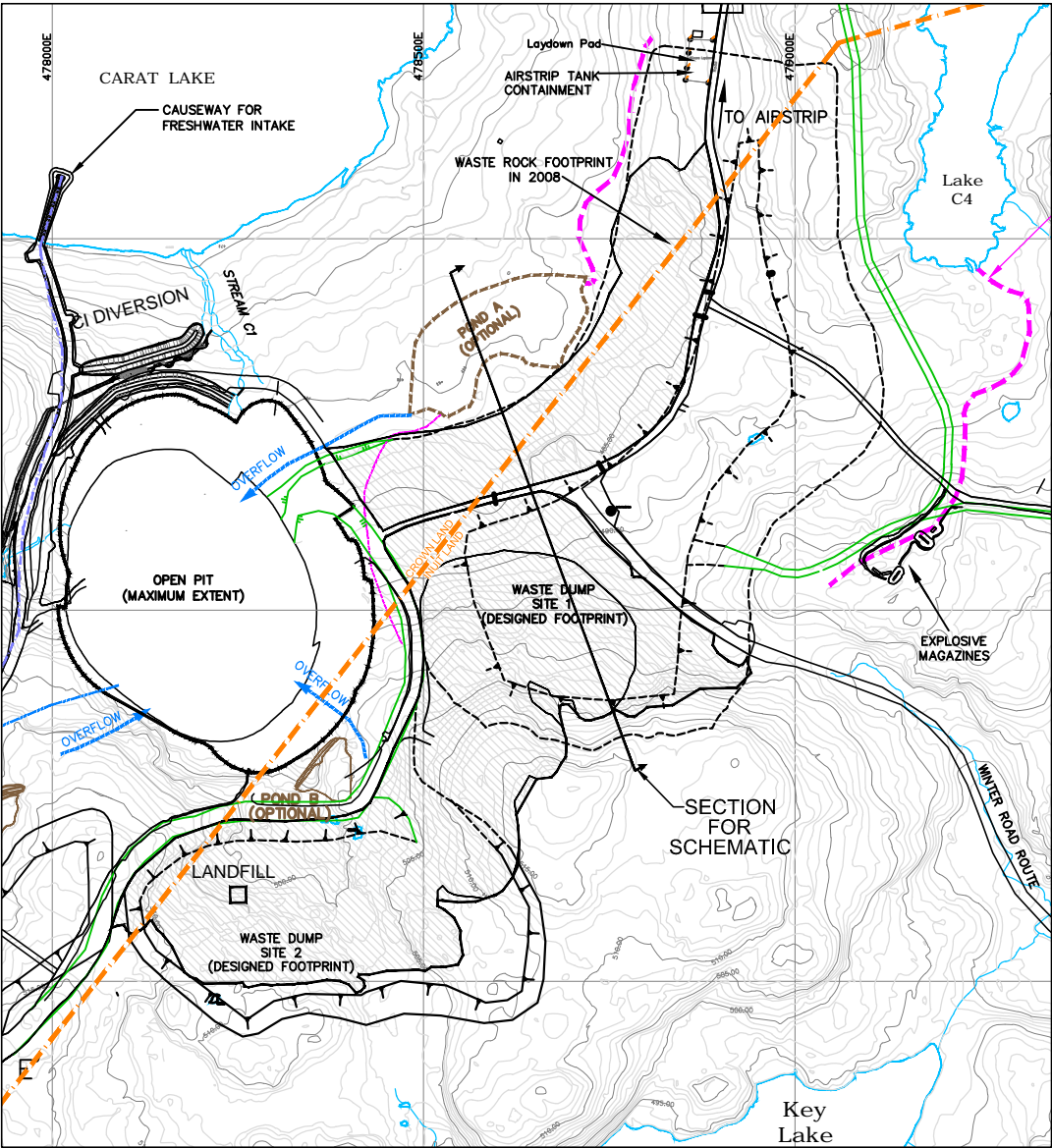


WASTE ROCK MANAGEMENT PLAN
JERICO DIAMOND MINE, NUNAVUT

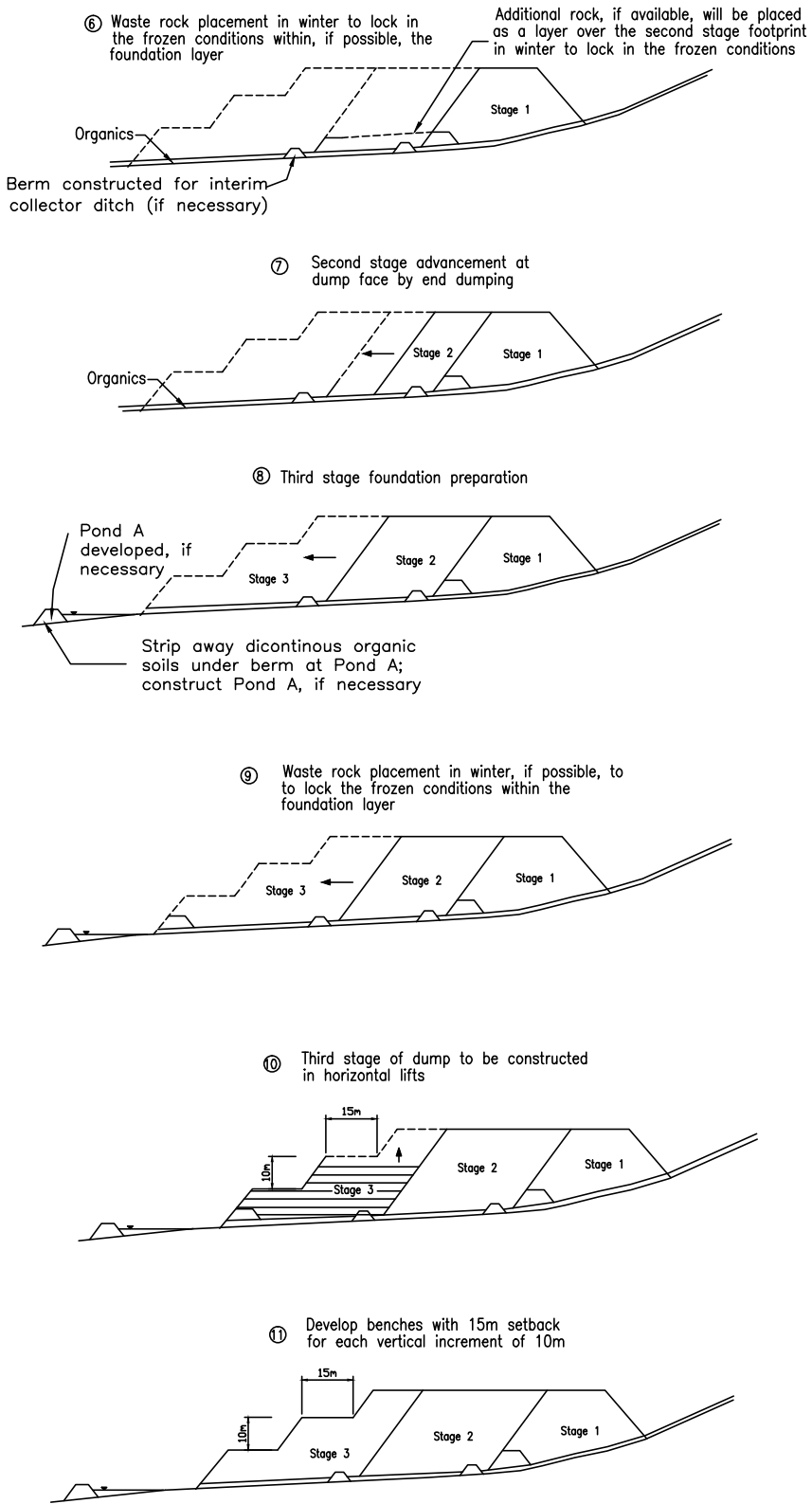
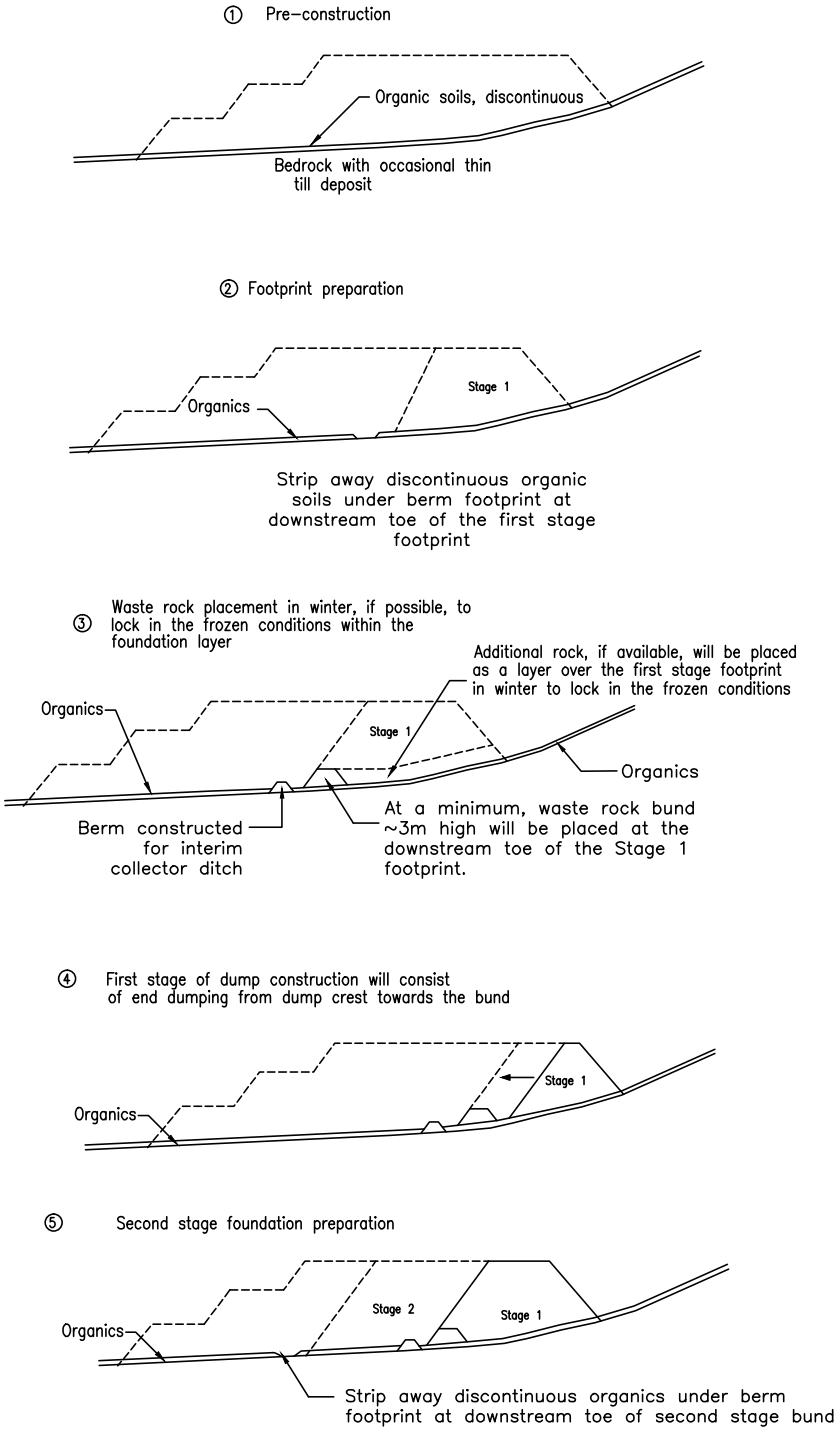
WASTE DUMPS 1 & 2
SECTIONS AND DETAILS

PROJECT NO. E14101118	DWN MM	CKD WL	REV 0
OFFICE EBA-EDM	DATE February 28, 2011		

Figure 4



Note: The general construction procedures for the dump construction are shown below. Details may be adjusted in the field based on conditions at the time of construction.

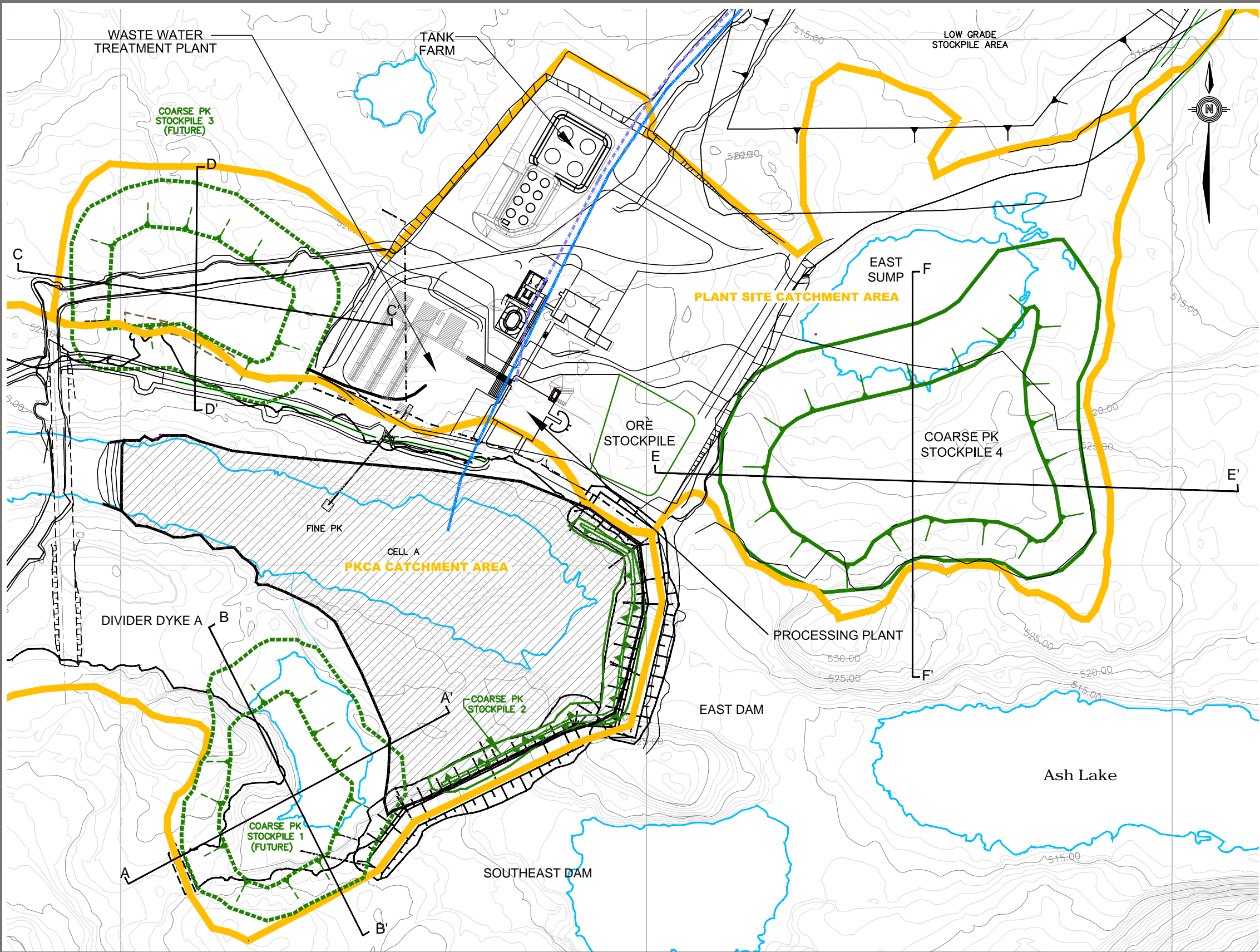


NOTES
1. ORIGINAL DRAWING FROM WASTE ROCK MANAGEMENT PLAN, PART 1 & 2 (SRK, 2005 and 2006)

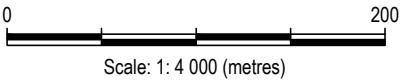
STATUS
ISSUED FOR USE



WASTE ROCK MANAGEMENT PLAN JERICO DIAMOND MINE, NUNAVUT				
SCHEMATIC OF GENERAL CONSTRUCTION SEQUENCE WASTE DUMP 1				
PROJECT NO. E14101118	DWN MM	CKD WL	REV 0	Figure 5
OFFICE EBA-EDM	DATE February 28, 2011			



- NOTES:
1. THE LAYOUTS OF THE STOCKPILES ARE APPROXIMATE AND HAVE BEEN BASED ON EXISTING TOPOGRAPHIC DATA.
 2. IN RELATIVELY FLAT AREAS WHERE THE STOCKPILES ARE CLOSE TO THE ASSUMED CATCHMENT LIMIT (I.E. THAT SEPARATES THE STOCKPILE FROM ASH LAKE AND KEY LAKE CATCHMENT), GROUND SURVEY METHODS WILL BE USED TO ACCURATELY DEFINE THE CATCHMENT LIMIT.
 3. A BUFFER ZONE WILL BE ESTABLISHED BETWEEN THE STOCKPILE TOE AND THE ASH/KEY LAKE CATCHMENT ON A FIELD FIT BASIS IN AREAS WHERE GROUND SURVEY METHODS ARE REQUIRED (SEE NOTE 2).



NOTES

1. ORIGINAL DRAWING FROM WASTE ROCK MANAGEMENT PLAN, PART 1 & 2 (SRK, 2005 and 2006)

STATUS

ISSUED FOR USE

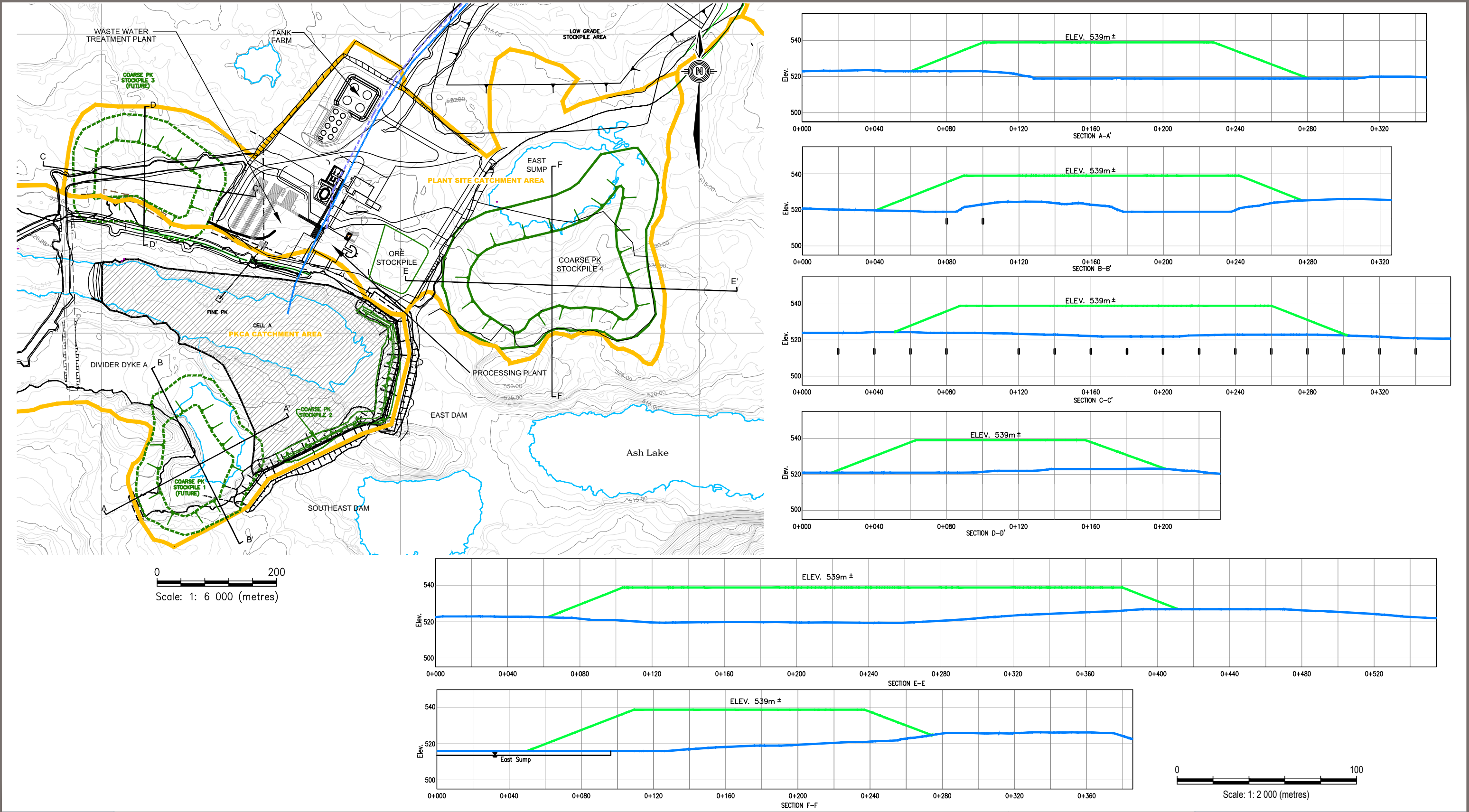


WASTE ROCK MANAGEMENT PLAN
JERICO DIAMOND MINE, NUNAVUT

LAYOUT OF
COARSE PK STOCKPILES

PROJECT NO. E14101118	DWN MM	CKD WL	REV 0
OFFICE EBA-EDM	DATE February 28, 2011		

Figure 6




NOTES


1. ORIGINAL DRAWING FROM WASTE ROCK MANAGEMENT PLAN, PART 1 & 2 (SRK, 2005 and 2006)

STATUS

ISSUED FOR USE

CLIENT




A TETRA TECH COMPANY

WASTE ROCK MANAGEMENT PLAN
JERICO DIAMOND MINE, NUNAVUT

COARSE PK STOCKPILES
SECTIONS

PROJECT NO. E14101118	DWN MM	CKD WL	REV 0
OFFICE EBA-EDM	DATE February 28, 2011		

Figure 7