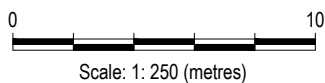


STAINING THROUGHOUT
CONTAINMENT AREA

BERMS IN GOOD
CONDITION

STATUS
ISSUED FOR REVIEW



CLIENT



shear
diamonds



A TETRA TECH COMPANY

2011 ANNUAL GEOTECHNICAL INSPECTION
JERICHO DIAMOND MINE, NU

AIRSTRIPTANKS

PROJECT NO.
E14101140

DWN
EP

CKD
GDK

REV
0

OFFICE
EBA-EDM

DATE
September, 2011

Figure I.1



Photo I1: Airstrip tank containment area



Photo I2: Staining on interior of containment area



Photo I3: Staining on interior of containment area

APPENDIX J

APPENDIX J LANDFILL

Geotechnical Inspection Summary

Location: Jericho Diamond Mine
Facility: Airstrip Tank Containment Area
Observation Date: July 16, 2011
Inspected by: Gary Koop, P.Eng.
 EBA, A Tetra Tech Company

Table J.1: Observed Condition

Features	Present (yes/no)	Dimensions	Extent	Description	Photographic Records
Erosion	None noted				
Cracking	None noted				
Settlement	None noted				
Seepage	None noted				
Other Features	None noted				

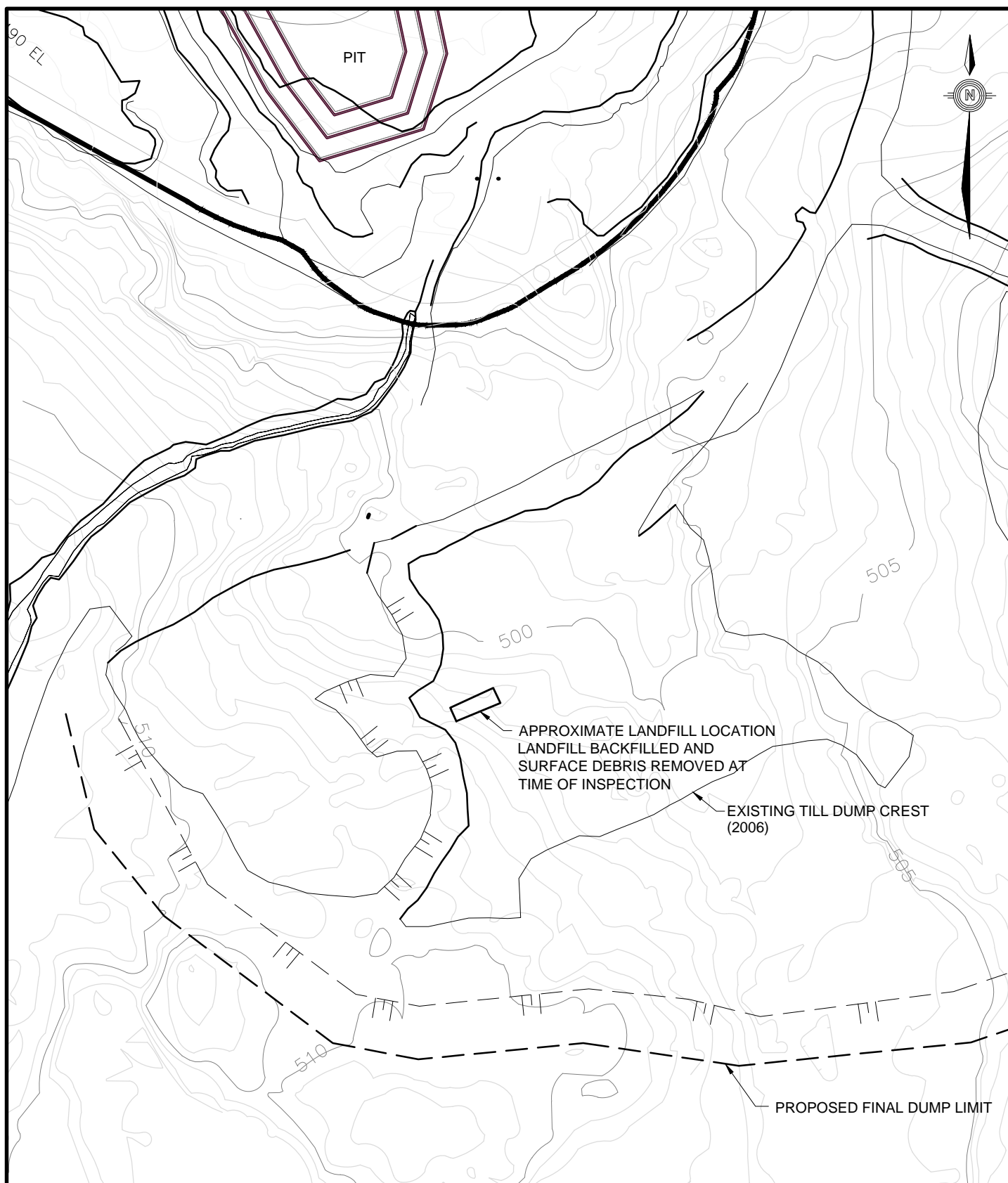
Table J.2: Thermal Summary

No ground temperature cables installed.

Table J.3: Recommendations and Conclusions

All debris has either been removed or covered. No remedial action required.

Y:\E14101140_Jericho\Annual Geotechnical Inspection\E14101117_FIG G-1 K-1.dwg [FIGURE J.1] September 09, 2011 - 7:09:38 pm (BY: KOOP, GARY)



STATUS
ISSUED FOR REVIEW

NOTES
FIGURE BASED ON 2006 SURVEY

0 100
Scale: 1: 2 500 (metres)

CLIENT



shear
diamonds



A TETRA TECH COMPANY

2011 ANNUAL GEOTECHNICAL INSPECTION JERICO DIAMOND MINE, NU

LANDFILL

PROJECT NO.
E14101140

DWN
EP

CKD
GDK

REV
0

OFFICE
EBA-EDM

DATE
September, 2011

Figure J.1



Photo J1: Landfarm area has been capped

APPENDIX K

APPENDIX K HAZARDOUS WASTE MATERIAL AREA

Geotechnical Inspection Summary

Location: Jericho Diamond Mine
Facility: Hazardous Waste Transfer Area
Observation Date: July 17, 2011
Inspected by: Gary Koop, P.Eng.
 EBA, A Tetra Tech Company

Table K.1: Observed Condition

Features	Present (yes/no)	Dimensions	Extent	Description	Photographic Records
Erosion	None noted				
Cracking	None Noted				
Settlement	Center Berm		Localized	Settlement of center berm near access road	K.4
Seepage	None Noted			Shear reports water impounded in HWTa base during freethet	
Other Features	Liner Damage			Liner damage at several locations on interior berms, in both cells. Perforations noted 0.3 m above base do not provide required containment. Extent of liner damage should be evaluated and a remediation plan developed.	K.3, K.4

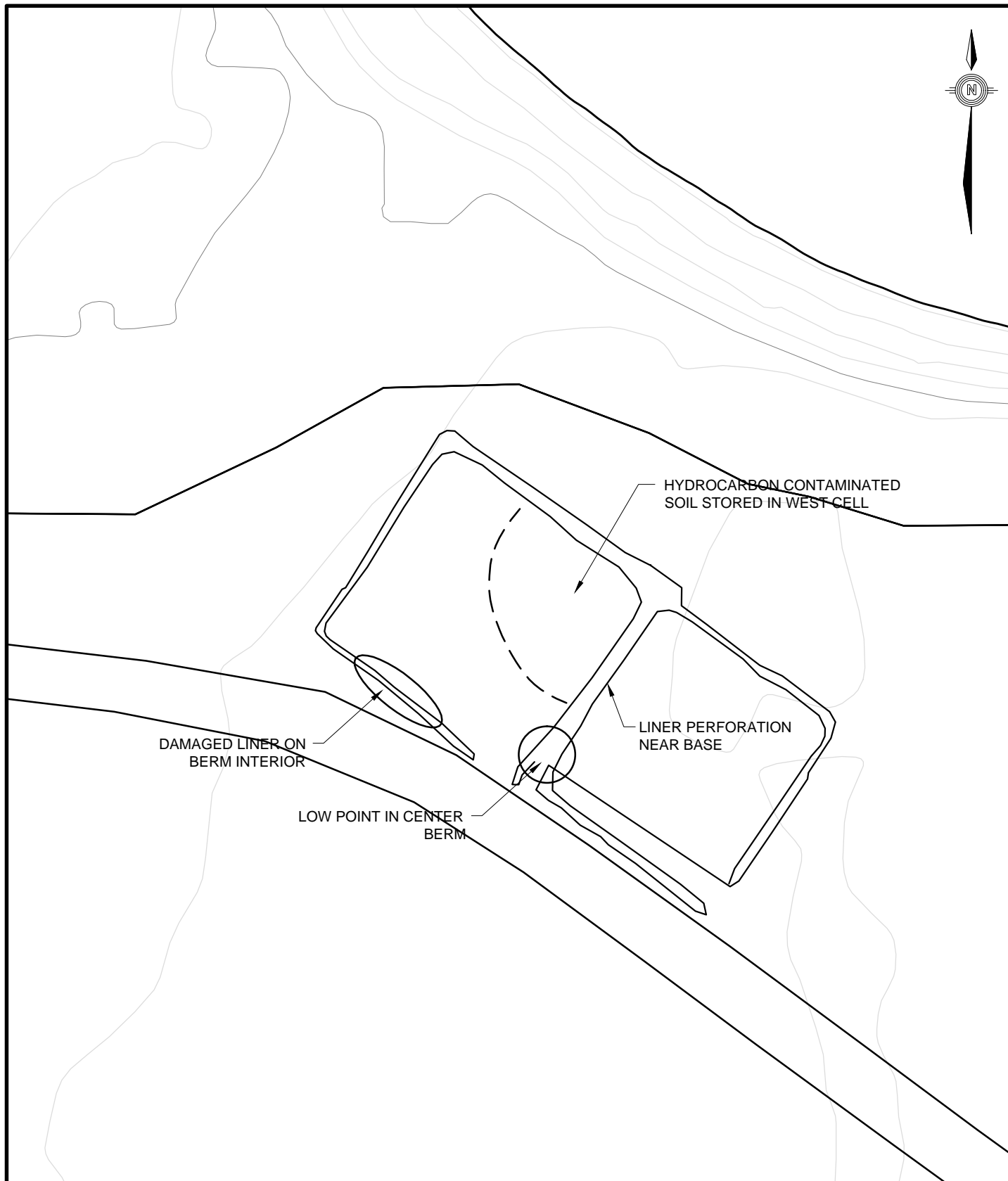
Table K.2: Thermal Summary

No ground temperature cables installed.

Table K.3: Recommendations and Conclusions

Perforations in berm do not provide required containment. Extent of liner damage should be evaluated and a remediation plan developed.
--

Y:\E14101140_Jericho\Annual Geotechnical Inspection\E14101117_FIG G-1-K-1.dwg [FIGURE K.1] September 09, 2011 - 7:34:58 pm (BY: KOOP, GARY)



STATUS
ISSUED FOR REVIEW

NOTES
FIGURE BASED ON 2006 SUREVEY

0 100
Scale: 1: 2 000 (metres)

CLIENT



shear
diamonds



A TETRA TECH COMPANY

2011 ANNUAL GEOTECHNICAL INSPECTION
JERICO DIAMOND MINE, NU

HAZARDOUS WASTE TRANSFER AREA

PROJECT NO.
E14101140

DWN
GDK

CKD
GDK

REV
0

OFFICE
EBA-EDM

DATE
September, 2011

Figure K.1



Photo K1: Hazardous waste transfer area from south corner



Photo K2: West cell from center berm location; note low spot in center berm in foreground of picture



Photo K3: Liner damage in west cell on southwest berm



Photo K4: Exposed and damaged liner in center berm

APPENDIX L

APPENDIX L WASTE ROCK PILES

Geotechnical Inspection Summary

Location: Jericho Diamond Mine
Facility: Waste Rock Pile
Observation Date: August 26, 2011
Inspected by: Bill Horne, P.Eng.
EBA, A Tetra Tech Company

Table L.1: Observed Condition

Features	Present (yes/no)	Dimensions	Extent	Description	Photographic Records
Erosion	None noted				
Cracking	None Noted				
Settlement	Waste Dump 1		Localized	Settlement of waste rock in Waste Pile #1	L.6
Seepage	None Noted				
Other Features					

Table L.2: Thermal Summary

No ground temperature cables installed.

Table L.3: Recommendations and Conclusions

Waste rock pile is performing adequately. No remedial action is required at this time. Regular inspection should be completed by Shear personnel, particularly once active deposition in the pile resumes.



Photo L1: Waste rock dump facing southeast



Photo L2: Till pile slope, note some sloughing of ice-rich material at toe; low grade and coarse PK stockpiles in background of photo



Photo L3: North portion of Waste Dump 1, no problems or issues noted



Photo L4: Waste Rock Dump 1 slope in good condition



Photo L5: Waste rock dump facing north



Photo L6: Minor settlement in waste pile 1; settlement is not a concern and does not impact waste rock pile performance