



## 2AM-JER1119 Inspection July 4, 2012

### *Photos*



Figure 1. Jericho site



## JD-03 Site



Figure 2. Examples of debris left from drill program at JD-03





## PKCA Area and FPK Management



Figure 3. PKCA from above



Figure 4. FPK blown towards SE pond. Note silt fences and berms in water to reduce transport of sediments.





Figure 5. FPK on slope of SE pond.



Figure 6. Closeup of FPK on vegetation





Figure 7. FPK sediment visible in pond.



Figure 8. PKCA with new mitigation measures: Tire berm on up-wind side, sprinklers cycling water from Cell B/C to wet the FPK.



Figure 9. Proposed mitigation measure: windblock/silt fence to be added to tire berms.



## HWTA and Hazardous Waste Management



Figure 10. HWTA from above



Figure 11. Signage is present and waste is well-sorted.





Figure 12. Liner of HWTa is exposed and integrity in doubt (scheduled for replacement this year).



Figure 13. Legacy and contemporary contamination is present in many of the existing berms. This creates the need to constantly manage contaminated water.





Figure 14. Contaminated material and barrels of contaminated water from oil spill (12-121).



Figure 15. Shear has participated in the design of the Oztek Unit, a treatment unit for hydrocarbon-impacted water. They can now treat water on-site.





Figure 16. The Oztek uses a combination of filters and ozonation, and the only waste produced is a filter which can be incinerated.



Figure 17. Water treated by the Oztek unit which now meets discharge criteria.



## Spill Cleanup



Figure 18. Unreported spill outside Water Pumphouse



Figure 19. Remains of Spill 12-121 still visible





Figure 21. Garage at Airport - legacy contamination in unlined shop

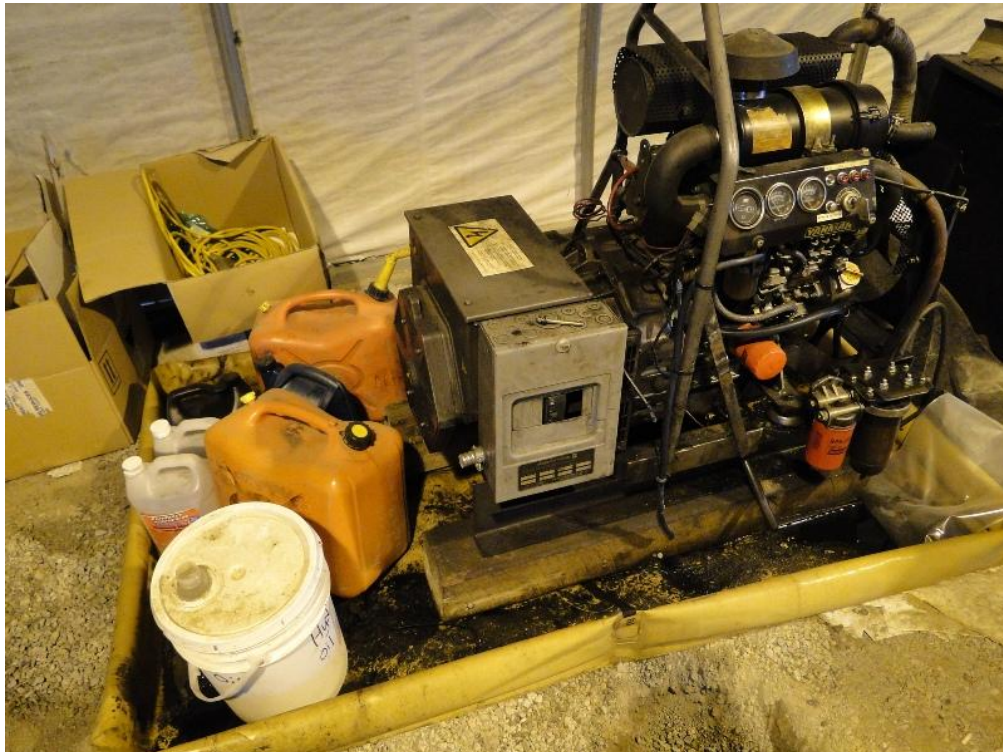


Figure 20. Further contamination is being mitigated by use of containment



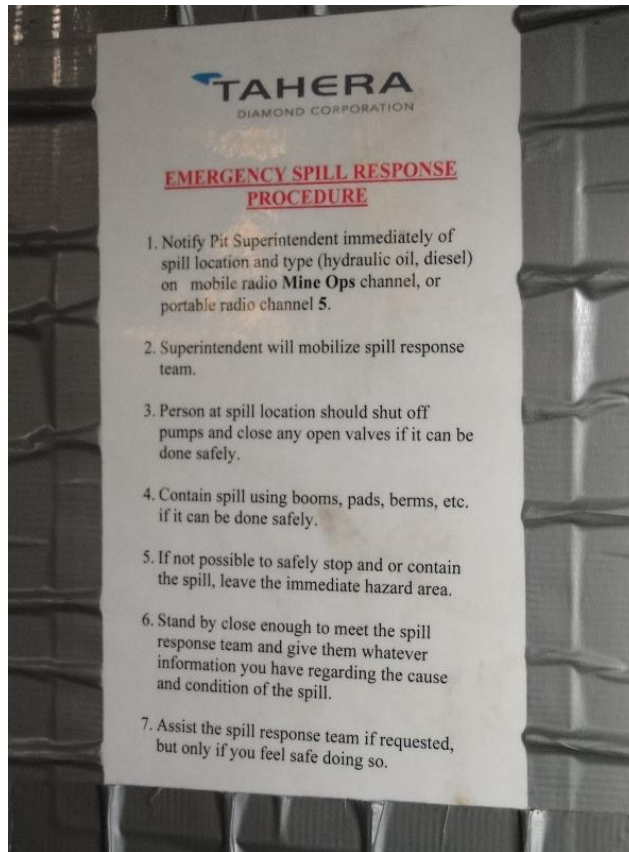


Figure 22. Spill procedures posted at Fuel Transfer Area



Figure 23. Waste is sorted prior to incineration