

# **Kiggavik Project Final Environmental Impact Statement**

Tier 3 Technical Appendix 3A:  
Public Engagement Documentation

Part 6 – Kivalliq Community Information  
Sessions 2012 Report – May 2013

September 2014



## TABLE OF CONTENTS

<b><u>SECTION</u></b>	<b><u>PAGE</u></b>
<b>1 INTRODUCTION</b>	<b>1-1</b>
<b>2 COMMUNITY INFORMATION SESSIONS</b>	<b>2-1</b>
2.1 NOTIFICATION.....	2-1
2.1.1 Newspaper.....	2-1
2.1.2 Radio Announcements.....	2-1
2.1.3 Posters and Invitations.....	2-1
2.2 PARTICIPATION.....	2-1
2.2.1 Open House Participation.....	2-1
2.2.2 Other Meetings and Events.....	2-2
2.3 FORMAT.....	2-2
<b>3 COMMUNITY FEEDBACK</b>	<b>3-1</b>
3.1 QUESTIONS AND COMMENTS.....	3-1
3.2 SIGNIFICANCE DETERMINATION.....	3-13
3.3 OPEN HOUSE COMMENT FORMS.....	3-14
<b>4 NEXT STEPS</b>	<b>4-1</b>

## LIST OF TABLES

Table 1.1-1:	Open House Locations & Dates .....	1-1
Table 1.1-2:	Other Meetings & Dates .....	1-2
Table 2.2-1:	Number of Participants Signing Attendance Sheets at Open House Sessions ...	2-2
Table 3.1-2:	Questions Recorded During Open Houses and Meetings .....	3-2
Table 3.3-1:	Satisfaction with the project so far by community .....	3-14
Table 3.3-2:	Participant Responses by Community Regarding Most Interesting Way to Present Information.....	3-15
Table 3.3-3:	Participant responses to what they would like to receive more information on .	3-17

## LIST OF FIGURES

Figure 3.1-2:	Comments Recorded During Open Houses and Meetings .....	3-2
Figure 3.3-1:	Overall satisfaction with the project so far.....	3-15
Figure 3.3-2:	Percentage of Participant Responses as the Most Interesting Way to Present Information at an Open House .....	3-16

## APPENDICES

APPENDIX A	NOTIFICATIONS
APPENDIX B	INFORMATION MATERIAL
APPENDIX C	COMMENT FORMS AND WORKBOOK
APPENDIX D	SIGN-IN SHEETS
APPENDIX E	PHOTOS

# PREFACE

**Note of Thanks to Kivalliq Communities:** This report summarizes what the Kiggavik Project team heard and learned in the Kivalliq Region during community information sessions. AREVA appreciates the willingness of community members to share information and the way in which team members were welcomed in your communities. If you feel this report has not accurately recorded these events, please contact us.

ᑕᑭᑭᑭᑭᑭᑭ

[illegible]

## ENGLISH SUMMARY

Kiggavik Open House Information Sessions were held in the seven Kivalliq Communities in October and November 2012. The objectives of the information sessions were:

- Introduce or re-introduce AREVA project team members to communities
- Provide updated information on the proposed Kiggavik Project
- Explain work done on the Kiggavik Draft Environmental Impact Statement (DEIS) and to answer questions about it
- Present DEIS findings, significance determinations and receive feedback on suggested mitigation and monitoring as well as acceptability of predicted effects
- Discuss uses of uranium and radiation protection with community members and answer questions
- Provide information on AREVA's Saskatchewan experience
- Continue to hear and learn about important local values and concerns relating to the Kiggavik Project
- Encourage public input and participation.

The open houses were advertised in newspapers and posters were placed in the seven communities. Letters of invitation were sent to Hamlets, HTOs, government departments and the Nunavut Impact Review Board. Handout material available during the community information sessions included a summary of how an environmental assessment is conducted and questions to identify whether potential effects are acceptable and important community values in considering the determination of significance. The Popular Summary of the DEIS in English and Inuktitut was also available as a handout in addition to an open house survey/comment forms.

In addition to the Open Houses, the AREVA team held meetings on the topic of significance with elders in Baker Lake and with HTOs in Rankin Inlet and Chesterfield Inlet. The team also met with students in Coral Harbour and Rankin Inlet and with Council and Hamlet representatives in Coral Harbour, Repulse Bay and Chesterfield Inlet.

A total of 284 people signed indicating they attended the open houses. AREVA staff recorded 328 comments made during discussions. The majority of the comments pertained to:

- Kiggavik Project – 21%
- Benefits – 18%
- Human Environment – 13%
- Communication/ Engagement -12%

Sixty five participants completed comment forms indicating the majority of participants learned something new, had their questions answered and were satisfied with the project so far. The AREVA team was seen as the most interesting way to present information. Meetings, Open Houses and Public Meetings were stated as the best way for AREVA to communicate with communities.

$\Delta^{\alpha} \omega_{\beta} \gamma_L \gamma_R$

[illegible]

- [illegible]

[illegible][illegible][illegible]

- $\rho_{\text{L}}^{\text{e}} \Delta^{\text{c}} - \Delta^{\text{c}} \rho_{\text{L}}^{\text{e}} - 21 > \epsilon_{\text{L}}^{\text{e}}$
- $\Delta^{\text{b}} \rho_{\text{L}}^{\text{e}} \Delta^{\text{c}} - 18 > \epsilon_{\text{L}}^{\text{e}}$
- $\Delta^{\text{c}} \rho_{\text{L}}^{\text{e}} \Delta^{\text{c}} \sigma_{\text{L}}^{\text{e}} - 13 > \epsilon_{\text{L}}^{\text{e}}$
- $\Delta^{\text{c}} \rho_{\text{L}}^{\text{e}} \Delta^{\text{c}} \sigma_{\text{L}}^{\text{e}} - 12 > \epsilon_{\text{L}}^{\text{e}}$





Copies of this report are available from the AREVA Baker Lake office, by request at 1-867-793-2000, and online at [www.kiggavik.ca](http://www.kiggavik.ca).

By:

AREVA Resources Canada Inc.

P.O. Box 9204

SASKATOON, SK.

S7K 3X5

# 1 INTRODUCTION

- AREVA Resources Canada Inc. (AREVA) submitted mine development applications and a project proposal to authorizing agencies on November 14, 2008 to initiate the Nunavut project review process on the Kiggavik Project. The Kiggavik Project is a proposed uranium mine (five deposits), a mill, and associated infrastructure located approximately 80 km west of the hamlet of Baker Lake in the Kivalliq region of Nunavut.
- Public participation is an essential component of AREVA's sustainable development model, and one of the five guiding principles used by the NIRB. AREVA and the Kiggavik team want to establish stakeholder relationships based on trust and transparency. AREVA is committed to the meaningful involvement of people in the Kivalliq Region in Kiggavik Project activities. AREVA is committed to providing information on the project, and wants to hear what the people of the Kivalliq region and other interested persons think about the proposed Kiggavik Project.
- Community information sessions were held in each of the seven Kivalliq communities between October 29 and November 10, 2012. The original schedule was modified somewhat due to weather conditions. The schedule is detailed in Table 1.1-1. The sessions were conducted from approximately 2 pm to 9 pm.
- In addition to the Open House sessions, AREVA representatives met with Elders, Mayors, Hunters and Trappers Organizations, and schools in some of the communities.
- The focus of the 2012 tour was the Draft Environmental Impact Statement (DEIS) and discussions on significance determination.

**Table 1.1-1: Open House Locations & Dates**

Community	Venue	Date
Baker Lake	Qamanittuaq Recreation Centre	October 29, 2013
		October 30, 2012
Coral Harbour	Qaggvvik Hall	October 31, 2012
Repulse Bay	Naujat School	November 1, 2012
Chesterfield Inlet	Recreation Centre	November 2, 2012
		November 3, 2012
Rankin Inlet	Singiituaq Community Hall	November 5, 2012
		November 6, 2012
Arviat	John Ollie Complex	November 9, 2012
Whale Cove	John Adjuk Community Hall	November 10, 2012

**Table 1.1-2: Other Meetings & Dates**

Community	Type of Meeting	Topic	Date
Baker Lake	Elders Meeting	Significance Determination	October 30, 2012
Coral Harbour	Hamlet Council	Project Update and Overview	November 1, 2012
Coral Harbour	School Visit - Discussion with Grades 9 to 12 and teachers.	Opportunities in mining	November 1, 2012
Repulse Bay	Mayor and Senior Administrative Officer	Project Update and Overview	November 2, 2012
Chesterfield Inlet	Mayor and Senior Administrative Officer	Project Update and Overview	November 2, 2012
Chesterfield Inlet	Hunters and Trapper Organization	Significance Determination	November 3, 2012
Rankin Inlet	Hunters and Trapper Organization	Significance Determination	November 6, 2012
Rankin Inlet	School Visit – Discussion with three classes	Opportunities in mining	November 6, 2012

Note: Contents of Table 1.1-1 and 1.1-2 are listed in the order in which they occurred. All other tables in this report are listed alphabetically by community.

The information sessions had several objectives:

- Introduce or re-introduce AREVA project team members to communities
- Provide updated information on the proposed Kiggavik Project
- Explain work done on the Kiggavik Draft Environmental Impact Statement (DEIS) and to answer questions about it.
- Present DEIS findings, significance determinations and receive feedback on suggested mitigation and monitoring as well as acceptability of predicted effects
- Discuss uses of uranium and radiation protection with community members and answer questions
- Provide information on AREVA's Saskatchewan experience
- Continue to hear and learn about important local values and concerns relating to the Kiggavik Project
- Encourage public input and participation
- This report summarizes the results of the 2012 Kiggavik community information sessions in the Kivalliq region. The report includes public notification materials, information presented and made available, feedback received from the communities, and next steps in project advancement.

## **2 COMMUNITY INFORMATION SESSIONS**

---

### **2.1 NOTIFICATION**

The information sessions were advertised using methods described below.

#### **2.1.1 Newspaper**

Kivalliq News: The bilingual print advertisement (Appendix A) was placed in Kivalliq News on October 24 and 31 and on November 7 prior to and during the information sessions.

#### **2.1.2 Radio Announcements**

Bilingual radio announcements, based on the print ad, were aired by local radio stations, beginning a few days prior to the information sessions, and continuing until the day of the sessions.

#### **2.1.3 Posters and Invitations**

Posters, in the same format as the print ad, were displayed in advance of the information sessions at public locations in all seven communities, including hamlet offices, government buildings, the Co-op, Northern Stores, convenience stores, office buildings and recreation centres.

Direct invitations were emailed to Mayors and the Hunters and Trappers Organizations in the Kivalliq Communities, to the Elders Group in Baker Lake and to the Kivalliq Inuit Association, government organizations and the Nunavut Impact Review Board.

### **2.2 PARTICIPATION**

#### **2.2.1 Open House Participation**

A total of 284 community members signed into an open house event. Table 2.2-1 shows the number of signatures recorded in each community. Not all open house participants feel comfortable signing into an event so not all participants were recorded. Also, some people attended both sessions in Baker Lake, Rankin Inlet or Chesterfield Inlet and signed the sheet both days.

**Table 2.2-1: Number of Participants Signing Attendance Sheets at Open House Sessions**

Community	Date	Attendance
Arviat	November 9, 2012	27
Baker Lake	October 29 and 30, 2012	74
Chesterfield Inlet	November 2 and 3, 2012	48
Coral Harbour	October 31	21
Repulse Bay	November 1, 2012	15
Rankin Inlet	November 5 and 6, 2012	70
Whale Cove	November 10, 2012	29
TOTAL		284

## 2.2.2 Other Meetings and Events

In addition to open houses, we held three meetings to discuss Significance Determination, two with the HTOs in Chesterfield Inlet and Rankin Inlet and one with Elders in Baker Lake. We gave a project update and overview to the hamlet council in Coral Harbour, and to the Mayors and SAOs in Repulse Bay and Chesterfield Inlet. We also visited schools in Coral Harbour and Rankin Inlet to talk about opportunities in mining and the qualifications required for various aspects of mining.

## 2.3 FORMAT

The format of the community information sessions was a combination of open house and public meeting. The open house displayed panel posters about the Kiggavik Project, the regulatory process and the findings and conclusions of the Draft Environmental Impact Statement. There was also a side table with an AREVA radiation protection specialist providing radiation protection demonstrations. The AREVA team was available to discuss the project with visitors and to answer questions. The team consisted of senior management, Regulatory Affairs, Community Relations, scientific people from the Safety, Health, Environment and Quality (SHEQ) Department, Exploration, and Camp operations. Comments and discussions were recorded and later categorized to provide AREVA information on areas of greatest interest or concern to the various communities. One or two translators were available at each event, with simultaneous translation equipment available. One interpreter familiar with the regional dialects accompanied the group on the tour. A second translator was hired in most communities.

- The display panels used at the open houses (Appendix B) provided information on the following topics:
  - Aquatics
  - Atmosphere
  - Marine Environment

- Human Health
- Socio-Economics
- Terrestrial Effects
- Terrestrial Wildlife
- Cumulative Effects
- Accidents and Malfunctions
- Sustainable Development
- Significance
- Nunavut Impact Review Process
- Proposed Kiggavik Project
- Radiation

Once or twice during each open house the format changed to a public meeting with a short AREVA presentation on the DEIS, key DEIS findings and a request for community members to share with AREVA their views on the acceptability of potential effects. Community members were also asked to share with AREVA their views on how to minimize or lessen possible effects (i.e. mitigation) and monitoring priorities.

Handout material available during the community information sessions included a summary of how an environmental assessment is conducted and questions to identify whether potential effects are acceptable and important community values in considering the determination of significance. The Popular Summary of the DEIS in English and Inuktitut was also available as a handout in addition to an open house survey/comment forms.

Feedback provided during open house discussions, in the EA/significance work page and the open house comment forms are provided in Section 3 – Community Feedback.

## 3 COMMUNITY FEEDBACK

---

### 3.1 QUESTIONS AND COMMENTS

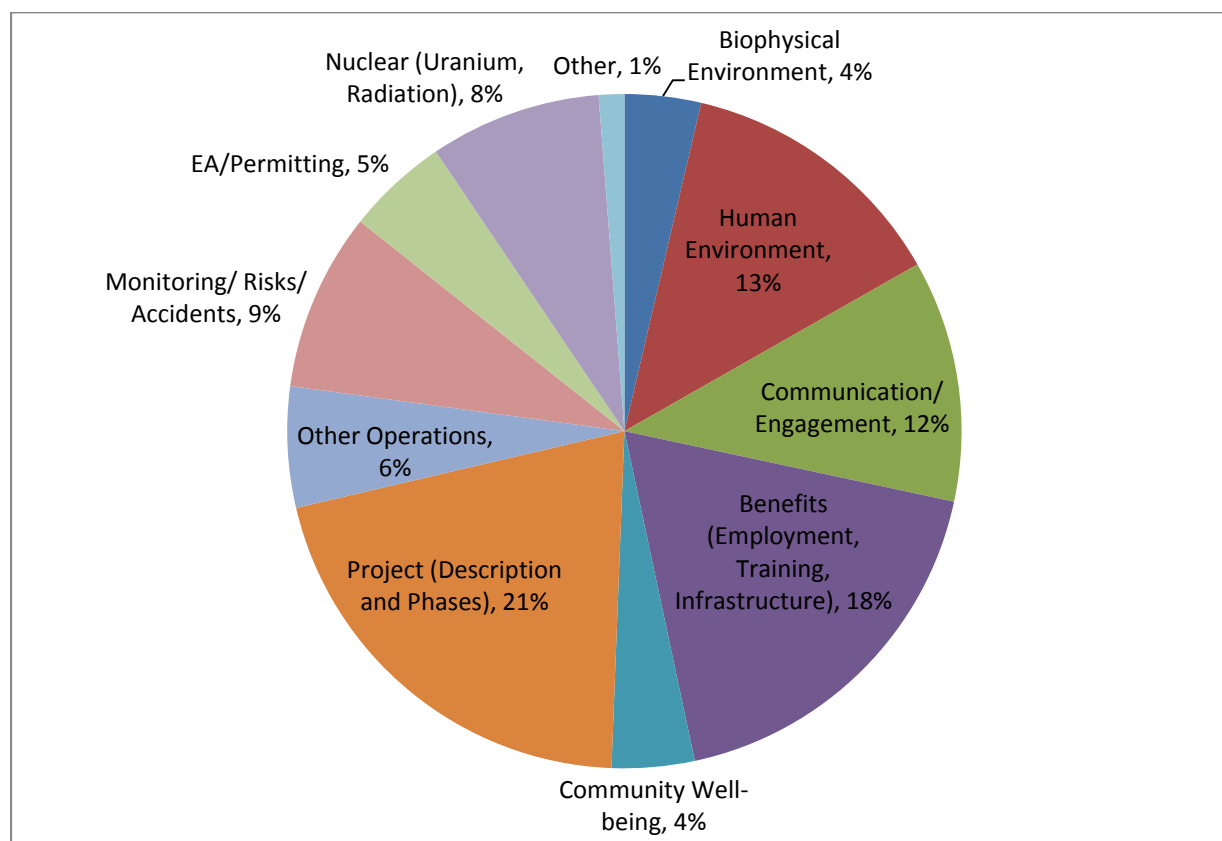
During the Open Houses, the AREVA team discussed the project with Open House attendees. On at least one occasion at each open house, an open discussion was held with the group of attendees present. Comments raised by attendees were documented by the AREVA team. The 328 comments recorded are provided in general categories in Table 3.1-1 and in combined categories as percentages in Figure 3.1-1.

Two thirds of the comments made were in the areas of Project (21%), Benefits (18%), Human Environment (13%) and Communication/Engagement (12%). The comment topics were combined from Table 3.1-1 for illustration in Figure 3.1-1 as follows:

- Project – 68 comments (21%)
  - Project Description (54).
  - Project Phases – 14).
- Benefits – 60 comments (18%)
  - Employment/ Training/Business (49)
  - Scholarship/ Donations (1)
  - Public Infrastructure and Services (6)
  - Taxes & Royalties (4)
- Human Environment – 43 comments (13%)
- Communication/ Engagement – 38 comments (12%)
  - Communication (9)
  - Community Engagement (24)
  - Community Relations (5)
- Monitoring/ Risks/ Accidents (28 comments (9%)
  - Risks, Accidents/ Malfunctions (19)
  - Monitoring/ Management (9)
- Nuclear (Uranium, Radiation) – 27 comments (8%)
- Other Operations – 19 comments (6%)
- EA/ Permitting – 16 comments (5%)



- EA Methodology (7)
- EA Process (6)
- Permitting Process (3)
- Community Well-Being – 13 comments (4%)
- Biophysical Environment – 12 comments (4%)
  - Biophysical Environment (8)
  - Ecosystem Integrity (4)
- Other – 4 comments (1%)
  - Administration (4)



**Figure 3.1-2: Comments Recorded During Open Houses and Meetings**

**Table 3.1-2: Questions Recorded During Open Houses and Meetings**

Biophysical Environment (8 comments)
Caribou and the winter road: has there been any studies involving caribou during the winter months and how the road affects migration?

How are you doing with caribou calving grounds?
How do you test the rocks, and how old are they?
How much energy will be produced, and how much greenhouse gases will be offset?
Concern that the water level is dropping and in 10 years may be too low.
Are there lots of lakes near the site?
Will the uranium go into the water and be dangerous for our kids and grandkids?
Saw a Saskatchewan elder in Baker Lake talk about deer and wildlife around the sites.
<b>Socioeconomics (111 comments in 9 sub categories)</b>
Communication (9 comments)
I don't know if I am for or against this project, but I know that I want people to be informed about the effects and not just supporting the project for employment. I don't want people to regret supporting this mine if there are effects on the environment.
Is communication a problem – do some speak only French?
I am interested in learning more about this project.
Thank you for coming to give us information. I know you have tried to support, thank you for coming.
No-one from the hamlet is here. I feel my comments made today will just disappear. When the hamlet goes to meetings, they do not report back to the community
We are being impacted. There is no representative from KIA here, and when you want support from KIA, they were here earlier but there was no help. I am wondering if you are not saying the truth.
I understand you're trying to give information and help and support our people. Thank you for coming to our communities to give information.
Now that I have talked to you, I do not feel as afraid as before.
I have never heard of this project.
Community Engagement (24 comments)
Anticipated more turnout at meeting (Repulse Bay). It may be good to do more advertising, or try different approaches to get better turnout. Announce draws if you want numbers, but you're not getting good engagement if people are not there for the project update, just there for prizes.
It is important for you to visit schools and explain what careers are available. Clearly explain what jobs would be available at different stages of the project.
Asked what is the best way to communicate with teenagers, Tina said some people don't like talking. Teenagers don't necessarily like Agnico disturbing the land and impacting caribou. Young people think water and pollution are destroying the land.
People are more receptive to AREVA now because of all the consultation. People were less receptive earlier because there was no consultation for Rankin.
Will you consider opening offices in places other than Baker Lake?
Best months for meetings in Repulse are February and July.
When will you be back in our community? (Repulse)
It would be beneficial to have an office in case there is an accident so we can get the supplies there. AREVA and Agnico both have offices in Baker Lake. It would be easier to get questions answered, and would increase understanding of the project.
Are you presenting to other communities? Which ones?
You will get more people if you give prizes like these away (20G or 40G gas ticket, blankets, household goods (coffeemakers etc.), tools.
Please send us a flag to hang up in our community hall
AREVA must be a big company to visit all seven Kivalliq communities. You must have lots of money!
Your company is doing a great job providing information. Looking at the "review process" board, where are you at now?
AREVA: Historical/Cultural considerations: when the mine in Rankin Inlet opened, there was no consultation until committees were formed.
Have you talked to Baker Lake?
Have you talked to hunters and trappers in the area, or just in Baker Lake?

Why are you here now? What is your Kivalliq tour?
I will always bring my concerns. I am a member of the KIA - would like to see the uranium mine. When they first tried (maybe in the 1980s) I tried to deliver supplies but my truck broke down.
Thank you for coming here to provide project information, God created the land, and we cannot control what happens. I support this project, there are lots of safety measures. We like caribou and wild meat, but younger people do not eat so much. I support this project because young people need employment - depression and suicide.
We have lots of meetings with Agnico Eagle, Meliadine, AREVA and Cameco. The questions from Chesterfield are always the same. I hear the same concerns over and over again; I don't hear anything new.
Do you get the same issues from elders in other communities?
There are members who are not here. Can we discuss this at our regular meeting?
Are there a lot of people/groups against mining?
The people are avoiding AREVA because of uranium. Five years ago, people said stay away from AREVA because of uranium. Then they brought Aborigines from Saskatchewan and that made people feel better.
Community Relations (5 comments)
If possible, have a HTO Board of Directors go to one of your mines to understand how operations are handled. Local people would understand something more from another local person.
I went to site (Kiggavik) several years ago. It would be good to go there again with other members of the HTO. We visit AEM frequently.
Can elders and students visit?
A thank you from a lady who went back to her traditional living area where she grew up. She left the area because of starvation, to Baker Lake. She wanted to say thanks.
They made us wear funny clothes and big boots.
Community/ Individual Well-Being (12 comments)
I am in support of the project, but worried about adverse effects. I'm worried that if more people move here, there will be more drinking and drugs.
I have heard some negative effects on the people of Baker Lake from employment at Meadowbank (affairs, drug and alcohol problems). Do you think Kiggavik will have these effects? I guess it depends on the person.
Concerned about the rotational work affecting people in the community. If people start families too young, it is difficult to go away to work. Shift work can be difficult.
Mining companies mean alcohol problems in the town. My main concern is the water, but also increased use of alcohol.
Sometimes with projects there is alcohol, and this is a problem for the town. There is an increase of alcohol when mines open.
I used to be chair of the CLC. I hear that alcohol is a problem in Baker Lake. We have meetings to try to identify problems, then maybe try to solve them. We should try to solve this problem.
Although I have no education, although I have been in some communities, I'm glad I've been asked to help out Inuit with these meetings (CLC). I keep hearing about alcohol problems in the communities. I'm glad it's being discussed, and I want this to be addressed as well.
The mine will help the community, but some money goes to drugs and alcohol.
There are more caribou being taken and the town is growing, and there are many community feasts. There are feasts with caribou all the time. There were caribou feasts the last four weekends in a row, for weddings.
I support this project because the young people need money. They need to pay rent, and their cost of living is high.
Otherwise (apart from barge monitors) he is quite supportive of the project - thinks it is good for Nunavut. When will the mine open? Where is it location?
I think these companies come to Nunavut, make lots of money and leave.

Culture/ Tradition (1 comment)
People are worried about too much growth here, and too many people moving here. They are very traditional people, more worried about the change.
Employment/ Training/ Business (49 comments)
I am part of the largely silent majority that supports this project. We think it will be good for the local economy.
I don't know if this is the right question or not, but I will ask it. The water in Chesterfield is used a lot, and we would like to see employment opportunities. Ships go by here, so we want opportunities - even an office. There is no other way to get supplies up, and there is no other person to take care of accidents. Agnico and AREVA both have offices in Baker Lake, but none in Chesterfield. This would help the people because it's easier to go to someone to get answers. If this is approved, you should consider an office here.
Talk to local SAO to get recommendations on who to hire for liaison roles/presence in the hamlet office. Meadowbank did not get advice when they hired a hamlet liaison, and the person did not work out. Contract was terminated.
Mining is the main driver of employment in the north. Mentioned NIRB and its work.
What are the economic and infrastructure benefits? Baseball diamonds, rundown buildings, etc.?
The water in Chesterfield is used a lot and we would like to see employment opportunities here (even an office).
I would like to see local businesses get more business. When would employment or business start?
Will hamlet companies be able to bid on work?
I'd like to start my own company with two drills. Have to borrow \$1 million.
(If you're shipping by air) I'm disappointed; I wanted to start a shipping company.
That's disappointing (flying it out), as I hoped there would be a shipping company started.
When will you be hiring?
I want a job. When will you hire?
That's a long time!
Will there be jobs, and for how long? What kinds of jobs?
Wondering about job opportunities with start of activities
Will jobs be open for everybody?
What age do you have to be to work at the mine?
What jobs are there at the mines where you work outdoors?
How do I apply for seasonal work?
How many hours did you work at AREVA?
Will you hire people to work in each community (community liaison officer) - someone who doesn't work on a rotational schedule? A rotational schedule will not suit my life.
My husband was hired by Martin Gerbauer for wildlife monitoring for Agnico and other companies. I wanted to let everyone know he has a good company, he hires Inuit people.
I heard Kiggavik is on Inuit land, which is good. But Inuit are not educated enough to get many jobs (more than driver jobs). Many jobs are not open to Inuit. I heard Meadowbank has many Quebec workers; will that be the same for Kiggavik? I don't think it will help local employment. Taxes and royalties are good, but we need jobs. Can you talk about employment opportunities, because there are not many for untrained people.
I'm happy about the project, but worried about local employment and opportunities for local people. If you are going to be like Meadowbank and hire southerners, I am concerned about this.
Qualified people may come to apply for jobs.
I worked at Meadowbank and I had to pay for my own flights to site. This was one of the reasons why I quit. Would this happen at Kiggavik?
Education - this is really important. The kids need to get Grade 12 and beyond. I am worried that people from Nunavut will not be getting good jobs at the mine. Will they be qualified? There is lots of youth unemployment.
The elders who had no education were very good at their work. If you look at grade levels, it discourages young people. Please keep this in mind. We do want our young people to graduate, but there are some

working at Meadowbank who have lower education. I want to suggest you look at all, not just high-grade people. Example of non-Inuits who had a spill.
Since Meadowbank started (and is now running): if AREVA starts its project and there are spills, the trained employees (we heard) did not do their jobs very well, and Inuit people with less education have worked hard. You will probably hire graduates with high grades. High education does not always help. But we have a mechanic in Chester who is very good but has no education. If you could support young people with lower grades and train them, it will help our people.
How many jobs would this mine have?
How many jobs need high school?
People need training programs, and need to take them; some don't want to take them.
Will there be training, like for haul trucks?
Arviat has a drilling training program and now have 50-70 people at Meadowbank.
When you had seasonal work this summer, was it successful?
If there is to be employment in Nunavut, wanted to say thank you.
Youth employment - will you hire from Kivalliq? (My granddaughter applied at Meadowbank).
We have no opportunities for youth compared to other communities.
Is it a two-week schedule?
What are the starting salaries? What training is available? What are the hours/shifts?
What kind of training do you provide - I am interested in taking massage therapy and maybe working at your mine.
Do you ask workers if they feel tired or stressed? Do you conduct surveys on this topic?
I like this project. But will there really be jobs for people in Nunavut? Will we have the skills to be hired?
Said his dad lived in the Kiggavik area. He used to go with his dad (Basil) when he guided AREVA people at the site.
As HTO members, we get an honorarium for our meetings. Do we get an honorarium for our meeting?
There is a consultant, Martin Gerbauer, and I want you to know he is good because he hires local people.
One of my children was hired as a wildlife monitor. The work was seasonal, and he was told there was no more work.
Thank you if there is a big turnout for employment.
Scholarships/ Donations (1 comment)
What kind of donations do you give? My adult volleyball team asked Meadowbank for help to go to the Iqaluit tournament, but were told no. Our communities need money for sports, to keep people away from drugs. Sports donations are more important than money for cultural programs to keep the young people busy. I learned about the IIBA and NIRB processes. I can't get a job at Meadowbank. They never get back to me.
Public Infrastructure and Services (6 comments)
Nice to hear, but if it's not set up by the government in writing, it will not happen.
What are the economics of infrastructure opportunities?
I want to see infrastructure in Chesterfield to support the Kiggavik project.
Do you have a draft agreement for Chesterfield to benefit economically from Kiggavik? (I.e. a deep-sea port, or a cargo storage area?) For 30 vessels a year for approximately 20 years, what do we get from this shipping, in addition to training, scholarships and royalties?
Royalties and all the other things you talk of, we have a plan for how Chesterfield can work with AREVA, local businesses etc., to ensure Chesterfield can benefit. Outside of training and jobs, how can Chesterfield benefit? There should be a plan and to coordinate with AREVA for infrastructure
The Nunavut Government is cutting back on budget. The RM boundary is too small (3 km x 6 km); there is no road on RM territory that goes inland. We need a road to the gravel site, they hope the Nunavut Government pays for this.
Taxes/ Royalties (4 comments)
It will not benefit Chesterfield, because benefits and royalties will go to KIA. If open for 20 years, this will not benefit the community.

When will you <i>(pay taxes and royalties)</i> ?
Will this benefit Chesterfield, because the royalties will go to the KIA, not to the communities. But the animals that we live on will be disturbed for 20 years.
When will you start to pay taxes?
<b>Human Environment (43 comments)</b>
Caribou migration: Sometimes young people say the caribou are going extinct, maybe something to do with the mines. But I don't agree. The elders say caribou have always changed their migration routes. They will eat lichen along one route and won't use it again until lichen is back.
As Inuit's knowledge, the caribou start heading (south) in September.
Mines affect the caribou population; since the gold mine was open, the caribou have left the area.
Was there wildlife in the Kiggavik area? Did you see caribou? We hardly saw caribou around, so that is why I was asking (less than 100).
With food prices high here, will the project stop when the caribou cross? We have not seen caribou for a while now, and we want to know where they are.
When the population is growing, or there are transient people, there will be an impact on the population of the caribou.
Some of the place names are wrong on the IQ maps on the wall. Please correct these.
There are some names on your map (Baker IQ) that are not the traditional names, and it would be important to get it right because we want the young people to know the traditional names.
Will the berries and animals be protected if your mine goes ahead?
Interested in Ferguson Lake because I grew up there.
The elders really want to protect the wildlife, we will hear this. I've been trying to tell them that we can't rely on hunting any more.
Are there fish in Andrew Lake?
Mining operations from Meadowbank had made fishing more difficult.
Do people fish there?
The mine in Rankin means we cannot pick the mussels/harvest to (send) out.
I don't want this to contaminate the water, soil, plants and have my babies get cancer.
Can't wait to see this project start. 3 cabins identified on the IQ map (the one by Judge Sissons with grave sites).
We know that you will be disturbing mammals in the waters, and we have to have a plan and a way to express our concerns. We have been touched by Agnico, and as a hunter, we have already seen disturbances. At Agnico they are still finding gold and passing through Chester, and they will go for more years.
The underwater mammals can hear from very far away.
I guess there are walrus present?
Did you get information on when belugas arrive?
Archaeological sites, but also non-historical items from hunters that are marked by exploration companies
All areas of the lands are used for hunting. Now we can travel farther with machines.
Worried about my land and homeland.
Nunavut is very different than Saskatchewan. The winds and snow and tundra are all different.
Where there is exploration, there is a lot of caribou.
What will you do to protect workers' health? At Meadowbank, they had an issue with asbestos, and management seems slow to do anything. They ended up conducting more dust suppression.
Qablunaat ways of studying is very different than Inuit ways.
Go to another country. It is dangerous and contaminates the plants and animals.
We have been impacted. There is no KIA representative here. We're wondering if you're not saying the truth.
We heard there is asbestos at Meadowbank - will there be asbestos at Kiggavik?
Always have an elder when doing studies or monitoring.
Ensure you know which herd you observe - there is Beverly & Kaminuriak herd.
The direction where the caribou herd are going and the calving grounds.



Wait for the leaders of the herd to pass. Be sensitive to the route the caribou use.
Caribou, fish and birds usually stay around this area. Have a wildlife officer or biologist be accompanied by an Inuk, especially an elder.
Would you operate during blizzards? Would you have safety structures along the road?
What if you have asthma? Would there be a lot of dust?
I've been a driller's helper at Committee Bay. One of the other drillers said he worked at a uranium project; I told him it was uranium and he said he can't have babies now.
Is it hazardous to mine?
Traditionally, there are a lot of rivers where fish run. We do not pitch tents near the river so as not to disturb the fish.
Helicopter traffic influenced the caribou population near Baker Lake. Helicopters are very noisy every day in spring and summer.
We hunt everywhere. National parks have some restrictions. Elders say not to damage old Inuit sites .
<b>Ecosystem Integrity (4 comments)</b>
I am mostly concerned about caribou. Will there be cumulative effects with Meliadine?
Are you working with BQCMB?
What are the interactions with Meadowbank (in relation to shipping and effects on marine wildlife)?
Since the gold mine opened, there is a lot of traffic of barges. The fish are not there any more because of the traffic.
<b>Other Operations (19 comments)</b>
How many uranium mine sites are there in Saskatchewan?
Another mine (diamond, called Shear) was operating but shut down because of low diamond prices
Meliadine was here recently; the message was not all that positive.
I liked the two-week schedule at Meadowbank, but didn't want to stay because there were not enough phones available to call home. Diavik had a phone in every room, and a bathroom. You should provide a phone in every room. Communication was bad at Meadowbank - too many languages (French, English, Inuktitut)
I have worked at Meadowbank. Reasons to leave: poor communication (French); have to overnight in Rankin on your own; spend time with girlfriend and family.
Used to take country food to Meadowbank.
Meadowbank was supposed to provide jobs. But even though they employ people, the project may not last.
Funeral in town for young man lost to suicide. Asked if the town was different before and after Meadowbank, she mentioned that many fewer people were on welfare, and they are able to buy things they could not before. Mentions worry that Meadowbank dug a hole so deep they could never fill it.
Quite a few people were at Meadowbank before, but some returned because they did not like it.
When the gold mine opened three years ago, the students left school without completing their degree.
In Rankin, when money came, people started drinking.
More liquor with Meadowbank.
How many other projects are going on in Kivalliq now?
Uranium exploration companies identified on their maps that there is a small area of "Inuit-owned" land.
Is this a picture of one of your mines?
I read in the paper about asbestos in a mine. What is this about?
Questions about asbestos at Meadowbank and whether it is cancer-causing
Before Meadowbank opened, I went hunting there. It has changed a lot of the last few years.
Expressed concerns about mining in general. She noted that the Agnico-Eagle operation had affected caribou hunting due to low-flying helicopters.
<b>EA Methodology (7 comments)</b>
I can't speak to the environmental aspects of your project. I feel I am too young to really understand them.

You described significance - I can see how, given and extreme example, you are accounting for various aspects of the effect.
Has there been any effect on wildlife in Saskatchewan? We should have a biologist so we know for sure the effects are Ok.
We might want to see your consultants (e.g.. Martin Gerbauer) at these meetings so we can learn what they're doing.
The noise level in water in relation to marine mammals -a walrus will hear a rifle shot while underwater. Will the noise you mention from shipping protect marine mammals? We are seeing shipping from Meadowbank, and it may be disturbing marine wildlife.
Will the impacts be big on the environment during operation?
I understand the "reversibility" part of significance determination. (Photo of Cluff mill site during operations, decommissioning and post-decommissioning)
<b>Project Phase (14 comments)</b>
Do you have any people for exploration?
How much did you drill in 2012?
When did you start drilling?
Do you fly drills?
There is exploration being considered near Arviat. Is that AREVA?
After closing, will aboriginals be able to use the land?
The pictures of Saskatchewan (Cluff) look cleaned up.
At Saskatchewan I saw a tree growing where the hole used to be.
What do you do once you are done mining?
How is the site left?
What happens when you are done - do you fill in your open pits?
How do we know you will clean up the site like you promise to?
When will the project start? I haul gravel for Meadowbank, but I want to work for AREVA when it starts. How long will it operate?
That AREVA person said your company will get better and better at decommissioning. Do you have facts and information on your decommissioning?
<b>Monitoring/ Management (9 comments)</b>
Will you have wildlife monitors in place when mining?
I worked with drillers before, and I want elders to know that when caribou has come before, the drillers have come to a halt. He has seen this himself.
What is the result of the quality of vegetation regrowth at Cluff Lake?
It might be good to bring consultants to these meetings to describe the work they do, so we know what kind of monitoring is happening.
Identify what might be dangerous to wildlife and the public. Report all studies, monitors undertaken.
Are there people monitoring the environment and radiation every day?
Will you hire someone to ensure wildlife is not disturbed on the road? Many elders have asked me this, so I want to ask the question and know if someone will be hired full-time to make sure caribou are not disturbed on the road
Will there be a wildlife monitor for the road to watch for caribou?
Agnico used to have monitors on the barges - would like to see that for us so Baker Lake supplies used as well.
<b>Project Description (54 comments)</b>
Is there not already a mine near Baker Lake? What are you looking for?
When will the mine start? Does this have anything to do with Agnico Eagle?
People didn't know about tailings in the old days.



How do you prevent caribou on site during mining?
Will you be using heavy equipment? When will the project start?
What happens in the pits? Is there a gate?
Is what goes in the haul trucks fine dust or chunks? Where is the fine dust?
Would you operate 24 hours a day 7 days a week?
Are these two different mines? (looking at posters of Kiggavik and Sissons sites)
Will the mine be open for less than 10 years?
With milling, is dust safe for people?
Why drain the lake? I'm beginning to think that's an admission by AREVA that it is dangerous.
How long will the mine operate?
When will the mine open?
How many pits?
Where is this mine going to be located?
How long would this project run?
If we are approved, how would you feel about having a committee consisting of Inuit and Kablunak to do HR?
When will work start?
Would we have to stay overnight at our own expense travelling to and from work?
How will you ship the yellowcake?
I was against shipping yellowcake by airplane because they could blast or the plane crashed. Because they have thick containers, I supported shipping by barge.
We know the access road and the route for the ship or barge. Have you considered locating the barge in a different area - it seems too narrow for a dock area where you have proposed it. Could you not put it closer to Chesterfield Inlet? I think it should be there.
Concern about the shipping route, too narrow?
South side vs. north side barge: south side really narrow (no barge); north side wide, barge can go. Two channels, but only one can be used?
The barge offloading area, with the number of containers there, there could be a lot of stealing of material. We should be careful on what could happen there.
For shipping: reduce the number of trips per year; increase the load on each shipment.
I would like to ask, as you said earlier, that you will control the speed limits. As a company, how will you control speed limits?
How do you get the uranium? How do you know where the uranium is?
When Kiggavik opens, there will be many barges with all the mining activity.
You were planning to ship yellowcake by barge, and I was very worried about that. But Chester, baker and Rankin debated this issue, and I suggested it go by barge. Yellowcake is in thick shields, so I wanted barge. I was against it being shipped by plane because of it dropped, it could blast. Because of the thick containers, I preferred the barge.
There will be a lot of barges to get the supplies there. How much traffic will there be?
How will you control the speed limits?
How would the vessels avoid the whales? Sometimes whales come after our propeller.
How many vessels a year? Will the vessels come from Churchill or elsewhere?
Suggestion to drive product as far as possible past the fresh water, as driving safer than barging in the narrows.
8-9 years ago in Baker Lake, I noticed that when I looked at the lake, the water levels was much lower. It was dry where so much water was before, If there is less water there, you will have to build a road to move the material. It might be cheaper to build right now.
We want the road
You still have two all-season road options. You need to update your maps so you don't confuse people.
We see the Meadowbank road being used every day to deliver stuff, and so I know you will need an all-season road too because your mine is much bigger than Meadowbank.
There are at least 40 ATVs some days on the Meadowbank road. Likely more (caribou) are taken because of the ease. If you are going to taper the road to make it easier for caribou to cross, you have to do that all the way, because caribou travel everywhere.

When are you going to start building a road? Are you going ahead with an all-season road? Winter roads are important
If you open the mine, will you build a bridge/tunnel? Would you build a road to Rankin?
Road - example of direction for permanent road. Are you putting in a permanent road?
Three routes for the road: I think it is important to decide now, because the hunters will provide lots of information on caribou movement. You should decide now on the road option. The poster on the all is out of date - it shows a south all-season road.
Will you produce the final uranium at your site?
How much uranium would be mined, and for how long?
How will uranium be moved?
What is clean and special waste rock?
What happens to waste?
What is "clean waste rock"?
What would happen if a lake goes into the pit?
Are there lakes under the waste rock?
If the project proceeds, there is a river that flows to the Baker Lake area. The project has small ponds around it. My concerns are with the water treatment around the area, and how the lakes and ponds are treated and assessed.
<b>Risks, Accidents and Malfunctions (19 comments)</b>
What if there was an earthquake at the time you were mining?
What about the risk of a diesel spill?
You should have a shield in place in Chesterfield that contains oil spills (booms).
There should be a shield in Chesterfield if there is an oil spill. There will be a lot of traffic and there is a very narrow area, and it can be dangerous.
Rankin, Baker all have these booms but we do not. Thank you, I wanted to talk about this.
Booms - do you know if these work well in the north?
What would AREVA do if there was an oil spill in our inlet? Would there be training on how to use equipment?
What are the effects when a barrel breaks, to the land and animals?
What would happen if a plane of uranium crashed?
People in the community need to know that they are not responsible if something terrible happens, like Fukushima - example - discussion on impacts of dust.
There have been big spills in B.C. and Florida. What do we have in place if we have a spill during shipment in such a harsh environment?
What about the spills, like in B.C. - our climate and conditions are more severe than B.C.
What would happen if you had a spill of uranium in the water? How much damage would be done?
This is a hard environment for spills. How will you look after that?
If there is an oil spill, there is no way to clean up the spill and it could get everywhere. There is nothing to protect (us). I have never seen a shield, and I would like to see the instruments here.
This is a hard environment for spills. How will you look after that?
How strict will we be in protecting caribou ? Caribou might stop on the road and not care. None this year at Kazan Lake.
Marine shipping - oil spills: if there is an oil spill, a shield (instrument to contain oil spills, such as a boom) should be in place near Chesterfield. There are lots of marine traffic and a narrow inlet.
I am opposed to air transport of yellowcake, because shipping is safer with thick containers. A plane crash of yellowcake would explode over places like Rankin and kill everyone.
<b>Nuclear (27 comments)</b>
On one poster there is something about radiation. I want to learn more about it.
Does everyone wear the radiation monitors?
How much radiation is there?
What could happen if you don't do radiation protection? Explain the meters - what do they do?

What does uranium exposure do?
What does background radiation come from?
What are alpha, beta and gamma radiation?
What is a dangerous number on the gadgets that would cause you to get sick?
What is a dangerous amount of radiation?
Do these particles burst into flame?
This is going to be like that movie Erin Brockovich is it? I heard uranium is very strong.
Uranium goes in the air, and it is dangerous for the community.
How many uranium mines are in the world?
What is it used for? You might be a special agent using uranium for bombs.
What is this used for? Will it be making bombs?
Will (the uranium) be used for bombs?
How do you control who it is sold to?
What will be used with uranium pulled from the ground?
What is depleted uranium?
Can you tell us about uranium?
How do they make sure the uranium gets to the right spot?
What do they do with the spent fuel? Are they burying it in Saskatchewan?
In 1986 there was Chernobyl. Radionuclides from those reactors have been found in Nunavut.
1986 Chernobyl: radiation particles still flowing. Is there a lot of radiation here?
Chernobyl in 1986 - radioactive particles found far away. Did any come to Canada?
Are you familiar with what happened in India?
I support your project, but also would like it if we could process the product in Canada (enrichment, processing). For many products in Canada, we don't create the final product
<b>EA Process (6 comments)</b>
Where is this project in the review process? Are you already operating this mine?
Curious about how and when the CNSC process starts, and how it will proceed along with the NIRB process.
Is this your final EIS? Where are you in the process?
How long to finish this process to get approved?
When I see a box that shows the Minister makes a decision, I think the Minister will have a heavy weight on his shoulders.
Mary River went through the process really fast. It was the summer, and they got the approval. Will you be that fast?
<b>Permitting Process (3 comments)</b>
I am not worried about the environment because I know the Canadian government has rules and regulations. It is not like developments in other countries where there are no rules. The environment is protected in Canada.
Who will give the permits?
We feel we have no power to approve (people of the community) - all of this approval power is with NIRB. Even if the people don't approve it, it may go ahead if NIRB says.
<b>Administration (4 comments)</b>
AREVA works all over the world. Anything on land claims - any disputes?
Has AREVA been challenged by land claims anywhere in the world?
I know you have a proposal to the federal minister, and the minister of AANDC. Are you aware of the NV surface rights tribunal? I am remembering everything, and will be having another hearing
Companies just want money. Where are your headquarters?

## 3.2 SIGNIFICANCE DETERMINATION

AREVA wanted to obtain feedback on the acceptability of potential effects assessed for the Kiggavik Project and suggestions from the communities on how to minimize effects and monitor effects throughout the project life to make sure the project continued to operate as predicted in the environmental assessment. This topic was discussed throughout open houses and in separate meetings as detailed in section 2.3. Numerous community members took significance work sheet pages from the events but only five were returned with comments. Some of the discussion with the groups pertained to other aspects of the project and comments are included in the comments in Section 3.1.

The Significance Worksheet shown in Appendix C formed the basis of the discussion which was as follows. The knowledge gained through scientific studies, community consultation and the gathering of local IQ of the land and people providing a baseline of current conditions. With the addition of operating plans we are provided with the ability to evaluate the various ways the project could interact with the environment and its people. Sometimes different approaches can completely remove the potential effect of a project on the environment. The remaining potential effects after improvements are called residual effects. Effects were carefully evaluated to determine how significant they could be. To determine significance, we considered direction, magnitude, geographic extent, frequency, duration, reversibility and ecological or socioeconomic effect. Standards, guideline and regulatory requirements were used to determine acceptable levels of change in addition to resource management objectives, scientific literature and ecosystem function and integrity.

Specific questions asked were as follows. Written responses are recorded in italics following the question:

### **Are there historical or cultural considerations that could influence significance?**

- *Always have an elder when doing studies or monitoring.*
- *The direction caribou herd are going, and the calving grounds.*

### **Do you have an IQ on environmental sensitivities we should consider?**

- *What are the effects to the land and animals when a barrel breaks?*
- *Helicopters are very noisy every day in spring and summer.*
- *Qablunaat ways of studying is very different than Inuit ways*
- *Wait for the leaders of the herd to pass. Be sensitive to the route the caribou use.*
- *As Inuit's knowledge, the caribou start heading south in September.*

### **What do you want AREVA to know when we are evaluating significance?**

- *If possible, have a HTO director go to one of your mines to understand how operations are handled. Then local people would understand something more from another local person.*
- *Shipping routes*
- *Studies of fish*
- *Studies of caribou*

- Identify what might be dangerous to wildlife and public. Report all studies monitors have undertaken.
- Who would keep an eye on the workers (to see) if they are following the rules?

#### What mitigation measures or monitoring do you think we should consider?

- Studies of caribou – ensure you know which herd you observe – there is Beverly and Kamanuriak herd.
- Caribou fish and birds usually stay around this area. Have a wildlife officer or biologist be accompanied by an Inuk, especially an elder.

The significance poster and focused discussions at open houses and meetings in Kivalliq communities and at meetings with Baker Lake Elders and Hunters and Trappers Organizations in Chesterfield Inlet and Rankin Inlet brought the concept of significance and how it was determined in the Kiggavik Draft Environmental Impact Statement to an audience of more than 100 Kivallimiut.

### 3.3 OPEN HOUSE COMMENT FORMS

Participants were invited to fill out a comment form before leaving the open house. The form is shown in Appendix C. A total of 65 participants completed the comment forms. Results are summarized below.

#### 1. Did you learn something new about the Kiggavik Project?

Sixty four responses were recorded.

Yes: 91% (58)      No: 9% (6)

#### 2. How satisfied are you with this project so far?

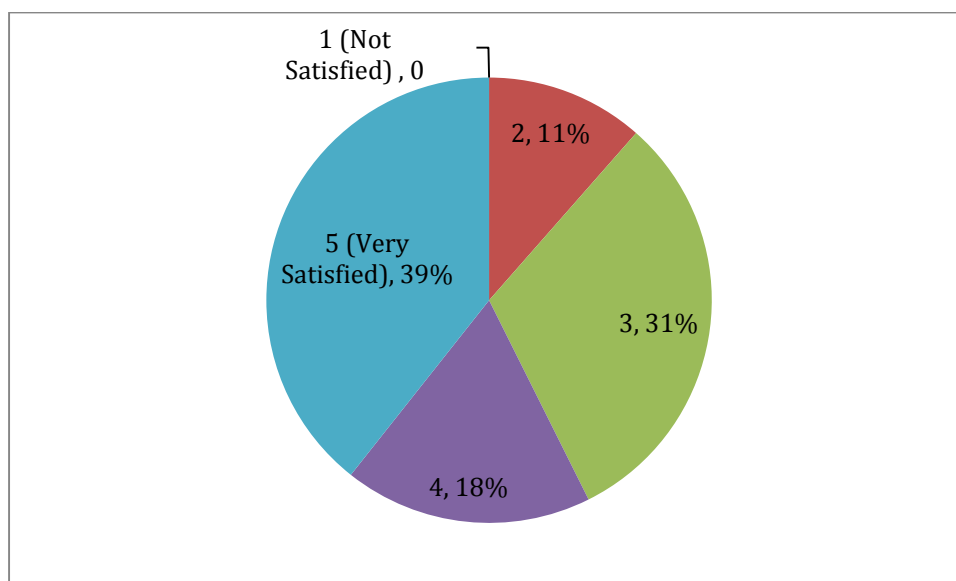
(1 = Not satisfied 5 = Very Satisfied)

This question was answered by 61 of the 65 comment forms. Results are shown in Table 3.3-1 and Figure 3.3-1.

**Table 3.3-1: Satisfaction with the project so far by community**

	Baker Lake	Coral Harbour	Repulse Bay	Chesterfield Inlet	Rankin Inlet	Arviat	Whale Cove	TOTAL
1 (Not satisfied)	0	0	0	0	0	0	0	0 (0%)
2	2	0	1	3	0	1	0	7 (11%)
3	3	0	5	3	1	1	6	19 (31%)
4	1	1	3	3	0	0	3	11 (18%)
5 (Very Satisfied)	4	3	1	2	1	5	8	24 (39%)
TOTAL RESPONDENTS	10	4	10	11	2	7	17	61

One comment: Keep it up!



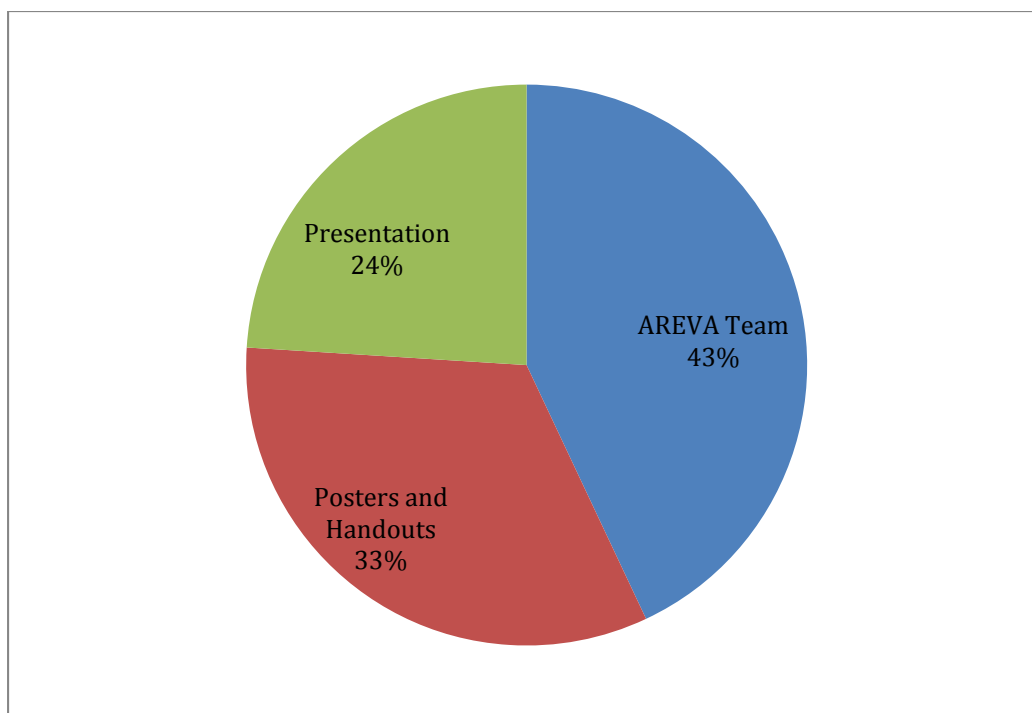
**Figure 3.3-1: Overall satisfaction with the project so far**

### 3. What was the most interesting part of the information session?

Participants were asked to select their preference for information sharing used at the open house and could select multiple options. Fifty of the comment forms contained 70 responses. Of these, 43% (30) of responses preferred speaking to the AREVA team; 33% (23) enjoyed the posters and handouts; and, 24% (17) appreciated the presentation. This is shown in Table 3.3-2 and Figure 3.3-2.

**Table 3.3-2: Participant Responses by Community Regarding Most Interesting Way to Present Information**

	Arviat	Baker Lake	Chesterfield Inlet	Coral Harbour	Rankin Inlet	Repulse Bay	Whale Cove	TOTAL
AREVA team	2	2	8	2	1	8	7	30 (43%)
Posters and Handouts	2	4	5	1	1	4	6	23 (33%)
Presentation	4	2	3	0	0	0	8	17 (24%)
Total Responses	8	8	16	3	2	12	21	70



**Figure 3.3-2: Percentage of Participant Responses as the Most Interesting Way to Present Information at an Open House**

#### **4. Did we answer all of your questions?**

Fifty-three of the 65 comment forms answered this question. Of these,

Yes: 48 (91%)

No: 5 (9%)

#### **5. If you answered no, what questions would you like answered?**

The following seven comments were provided:

- How do we look to be hired, or what courses to take for jobs.
- Yes. Please answer the person.
- I would like some clear answers about the contaminants/ dangerous uranium/radiation (translated from syllabics)
- What are the environmental and health impacts from uranium mining? Will this have a great effect on marine mammals and lakes?
- Lots of work to do. But behaviour in camp.
- No questions
- I think so. I don't know.

## 6. What would you like to receive more information on?

**Table 3.3-3: Participant responses to what they would like to receive more information on**

Topic	Arviat	Baker Lake	Chesterfield Inlet	Coral Harbour	Rankin Inlet	Repulse Bay	Whale Cove	TOTAL
Radiation Protection	6	7	11	3	2	9	10	48
Uranium Mining	5	6	8	2	2	9	14	45
Regulatory Process	7	6	7	2	2	7	16	47
Significance	5	6	9	1	2	6	15	44
Environmental Protection	5	5	10	3	2	8	16	49
Economic Opportunities	7	5	11	3	2	7	16	51
Other (see below list)	4	4	7	1	1	1	7	25

Requests for other information (8 of the 25 “other” provided requests):

- It is good there will be jobs. We would like to see 30-50% Inuit employment.
- More explanation of everything, and elders; lots of people need to work.
- We seem to meet together last minute.
- Jobs
- There are some misunderstandings about the monitoring of wildlife and the studies that Gebauer is doing with AREVA, AEM and COGEMA (sic).
- Environmental and health issues of uranium mining, including for land animals, plants, marine mammals, fish and lakes.
- Economic opportunities in the future.
- Training

## 7. How would you like AREVA to communicate with you?

Forty-six comments were recorded for this question from the 65 comment forms completed. Most of the comments preferred meetings, public meetings and Open Houses as means to communicate.

The following comments were recorded on the comment forms:



- Meetings are good.
- Meetings are the best way to communicate with the community
- Meetings with your group (2 comments)
- Meetings with groups of general public; handouts going to schools.
- Hire local translators; different words were hard to understand.
- Inform the community days before arrival.
- I would like AREVA to communicate through Open Houses
- You are welcome
- You guys could communicate with the communities more often and get actual feedback.
- Please announce the meetings on the radio. Elders need to know. Thank You.
- It is great to see an open house. I would like to see more when the mine is opening.
- Very good (2 comments).
- I would like to meet with other people with AREVA.
- Open houses. (14 comments)
- Open house; email; local radio when everyone is listening, with translator.
- Open houses, handouts, radio shows.
- Open houses; meetings with groups; blog
- Hold public meetings
- Open Houses, handouts, phone, email
- Open houses, meetings with groups (2 comments).
- Open House and meetings and handouts
- Handouts better for me
- Noisy
- Through general/ open house meetings; I would like more information from your groups. Translated from syllabics)
- Through Inuit general meetings; NIRB /ARC hearings that we want more information (translated from syllabics)
- We want to hear more through documentations and through meetings (translated from syllabics).
- Yes, we would like to hear more information (translated from syllabics)
- All above (2 comments)
- Yes communicate with you open house in future

## 4 NEXT STEPS

---

Public participation and information sharing is an ongoing process, and AREVA will continue to hold liaison committee meetings, workshops, public information sessions and presentations to community councils, HTOs and other interested groups throughout the environmental assessment and future project phases. Project information is always available from the Baker Lake AREVA office, the AREVA website, and public registries.

AREVA representatives will continue to visit communities in the Kivalliq region to provide project information, elicit comments, and listen to concerns from the people of the region.

The information gathered in this Kivalliq Community Information Sessions 2012 Report along with the other engagement data gathered since the Kiggavik Draft Environment Impact Statement was written will be combined with previous data and included in the Kiggavik Final Environmental Impact Statement.

## APPENDIX A NOTIFICATIONS

---

## A-1. INVITATIONS

Letters of invitation were sent to mayors and Hunter and Trapper Organizations (HTOs) in each community, as well as to the Kivalliq Inuit Association (KIA), the Nunavut Impact Review Board (NIRB), the Canadian Nuclear Safety Commission (CNSC), and Aboriginal Affairs and Northern Development Canada (AANDC). CNSC attended at Baker Lake. Local KIA Community Liaison Officers (CLOs) attended most events. The Government of Nunavut (GN) and KIA attended at Rankin Inlet. Following is a list of the invitation letters that were sent:

### Hunters and Trappers Organizations (HTOs)

Arviat: Mr. Alex Ishalook, Chair; Ms. Leah Muckpah, Manager  
Baker Lake: Mr. Thomas Elytook, Chair; Ms. Joan Scoyyes, Manager  
Chesterfield Inlet: Mr. Tony Amauyok, Chair; Ms. Mary-Ann Issaluk, Manager.  
Coral Harbour: Mr. Noah Kadlak, Chair; Mr. Noah Makalook, Manager  
Rankin Inlet: Mr. Jack Kabvitok, Chair; Mr. Norman Ford, Manager  
Repulse Bay: Mr. Michel Akkuardjuk, Chair; Ms. May-Lain Bruce, Manager  
Whale Cove: Mr. Stanley Adjuk, Chair; Ms. Lisa Jones, Manager.

### Mayors and Hamlets, Elders

Arviat: Mayor Bob Leonard  
Baker Lake: Mayor David Aksawnee  
Baker Lake Elders: Ms. Winnie Owingayak  
Chesterfield Inlet: Mayor Harry Aggark  
Coral Harbour: Mayor Jerry Paniyuk  
Rankin Inlet: Mayor Pujut Kusagak  
Repulse Bay: Mayor Hugh Haqpi  
Whale Cove: Mayor Percy Kabloona

### Government Organizations

**Aboriginal Affairs and Northern Development Canada (AANDC):** Ms. Karen Costello, Acting Director, Resource Management; Ms. Margaux Brisco, Manager, Environment.

**Canadian Nuclear Safety Commission (CNSC):** Mr. Denis Schryer, Project Officer; Mr. Jean LeClair, Director, Uranium Mines and Mills Division.

**Nunavut Impact review Board (NIRB):** Ms. Sophia Granchinho; Ms. Amanda Hanson

**Government of Nunavut:** Mr. Pauloosie Suvega, ADM Economic Development & Transportation; Mr. Jean Daniel Blouin, Territorial Environmental Assessment Coordinator; Ms. Dianne Lapierre, Manager, Environmental Assessment and Regulation, Economic Development and Transportation.

**Kivalliq Inuit Association (KIA):** Mr. Luis Manzo, Director of Lands.



## **APPENDIX B INFORMATION MATERIAL**

---



## Aquatics: Respecting Clean Water

Clean water is essential to all of us and we will endeavour to protect it

ARWE assessed the potential aquatic effects of the Kiggawi Project on ground and surface water, water and sediment quality, as well as fish and other aquatic organisms, populations and habitat in the local and water areas. The potential effects include desilting activities, use of freshwater for construction, mining and milling operations, process water treatment and discharge, as well as construction of dikes, berms and collection ponds.

» To have the least effect on ground and surface water, AREVA will

- Implement a water management system based on minimal water usage and discharge, as well as recycling, while making use of natural drainage
- Design the site to ensure the smallest footprint possible, while ensuring that the tailings (process waste) management system avoids interaction between the tailings and natural water bodies
- Ensure that the site water supply will be sourced from and discharged to large water bodies, and that the treated water released will meet or exceed the highest water quality standards

» The results of AREVA's assessment indicate that

- Draining part of Andrew Lake will cause some fish habitat destruction that will be replaced.
- The Project will use water from Swamesi Lake and Mushroom Lake.
- Some elevated levels of copper, cadmium and selenium may occur in Judas Slough Lake, but residual effects are not predicted as significant.

**AREVA is committed to protect the aquatic environment**

Our assessment demonstrates that the effects of the Kiggavik Project on the local aquatic environment will be low in terms of water and sediment quality, aquatic organisms and fish populations and habitat. The effects on surface and ground water will be higher but limited to the Project's operating period.

**IQ Influence:** Local observations on climate change and its possible influence on permafrost and ground water influenced aquatics studies, which considered water movement in a variety of climate change scenarios, including a decommissioned mine in a no-permafrost case.

For more information on AREW's assessment of aquatic effects refer to our Draft Environmental Impact Statement, Tier 2 Volume 5.

**Figure B.1-1 Display Panel – Aquatics. English (above), Inuktitut (below)**

ΔΛ'Γ▷C': ΔΛ'Γ ንኃሊበሮፖሊሲዊፍጥኃሪፍጥኃሪ

$\Delta L^{\frac{1}{2}} \propto t^{-\frac{1}{2}}$

[illegible][illegible]

- [illegible]

[illegible]

1. ለፍጥነት ምክንያት ለፍጥነት ምክንያት ለፍጥነት ምክንያት ለፍጥነት ምክንያት  
 2. ለፍጥነት ምክንያት ለፍጥነት ምክንያት ለፍጥነት ምክንያት ለፍጥነት ምክንያት  
 3. ለፍጥነት ምክንያት ለፍጥነት ምክንያት ለፍጥነት ምክንያት ለፍጥነት ምክንያት

ᐃᓕᐃᐅᐅᐅᐅ ᐃᓕᐃᐅᐅᐅᐅ ᐃᓕᐃᐅᐅᐅᐅ ᐃᓕᐃᐅᐅᐅᐅ ᐃᓕᐃᐅᐅᐅᐅ

6024207CDB9C CDNYZL9C P16A4T AHCN4VH #288Y. ΔLT

අනුමැතිය ලබාදීම සඳහා අත්සන් කරනු ලබන තැනැත්තාගේ නම සහ තනතුර සඳහන් කර ඇත.

በሰላም ስለሚኖሩት ሁሉም ሕዝቦች ለጥቅምታቸው ምስጋና ይገኛል። በሰላም ስለሚኖሩት ሁሉም ሕዝቦች ለጥቅምታቸው ምስጋና ይገኛል።

2007-08-01-02-03-04-05-06-07-08-09-10-11-12-13-14-15-16-17-18-19-20-21-22-23-24-25-26-27-28-29-30-31-32-33-34-35-36-37-38-39-40-41-42-43-44-45-46-47-48-49-50-51-52-53-54-55-56-57-58-59-60-61-62-63-64-65-66-67-68-69-70-71-72-73-74-75-76-77-78-79-80-81-82-83-84-85-86-87-88-89-90-91-92-93-94-95-96-97-98-99-100-101-102-103-104-105-106-107-108-109-110-111-112-113-114-115-116-117-118-119-120-121-122-123-124-125-126-127-128-129-130-131-132-133-134-135-136-137-138-139-140-141-142-143-144-145-146-147-148-149-150-151-152-153-154-155-156-157-158-159-160-161-162-163-164-165-166-167-168-169-170-171-172-173-174-175-176-177-178-179-180-181-182-183-184-185-186-187-188-189-190-191-192-193-194-195-196-197-198-199-200-201-202-203-204-205-206-207-208-209-210-211-212-213-214-215-216-217-218-219-220-221-222-223-224-225-226-227-228-229-230-231-232-233-234-235-236-237-238-239-240-241-242-243-244-245-246-247-248-249-250-251-252-253-254-255-256-257-258-259-260-261-262-263-264-265-266-267-268-269-270-271-272-273-274-275-276-277-278-279-280-281-282-283-284-285-286-287-288-289-290-291-292-293-294-295-296-297-298-299-300-301-302-303-304-305-306-307-308-309-310-311-312-313-314-315-316-317-318-319-320-321-322-323-324-325-326-327-328-329-330-331-332-333-334-335-336-337-338-339-340-341-342-343-344-345-346-347-348-349-350-351-352-353-354-355-356-357-358-359-360-361-362-363-364-365-366-367-368-369-370-371-372-373-374-375-376-377-378-379-380-381-382-383-384-385-386-387-388-389-390-391-392-393-394-395-396-397-398-399-400-401-402-403-404-405-406-407-408-409-410-411-412-413-414-415-416-417-418-419-420-421-422-423-424-425-426-427-428-429-430-431-432-433-434-435-436-437-438-439-440-441-442-443-444-445-446-447-448-449-450-451-452-453-454-455-456-457-458-459-460-461-462-463-464-465-466-467-468-469-470-471-472-473-474-475-476-477-478-479-480-481-482-483-484-485-486-487-488-489-490-491-492-493-494-495-496-497-498-499-500-501-502-503-504-505-506-507-508-509-510-511-512-513-514-515-516-517-518-519-520-521-522-523-524-525-526-527-528-529-530-531-532-533-534-535-536-537-538-539-540-541-542-543-544-545-546-547-548-549-550-551-552-553-554-555-556-557-558-559-560-561-562-563-564-565-566-567-568-569-570-571-572-573-574-575-576-577-578-579-580-581-582-583-584-585-586-587-588-589-590-591-592-593-594-595-596-597-598-599-600-601-602-603-604-605-606-607-608-609-610-611-612-613-614-615-616-617-618-619-620-621-622-623-624-625-626-627-628-629-630-631-632-633-634-635-636-637-638-639-640-641-642-643-644-645-646-647-648-649-650-651-652-653-654-655-656-657-658-659-660-661-662-663-664-665-666-667-668-669-670-671-672-673-674-675-676-677-678-679-680-681-682-683-684-685-686-687-688-689-690-691-692-693-694-695-696-697-698-699-700-701-702-703-704-705-706-707-708-709-710-711-712-713-714-715-716-717-718-719-720-721-722-723-724-725-726-727-728-729-730-731-732-733-734-735-736-737-738-739-740-741-742-743-744-745-746-747-748-749-750-751-752-753-754-755-756-757-758-759-760-761-762-763-764-765-766-767-768-769-770-771-772-773-774-775-776-777-778-779-780-781-782-783-784-785-786-787-788-789-790-791-792-793-794-795-796-797-798-799-800-801-802-803-804-805-806-807-808-809-810-811-812-813-814-815-816-817-818-819-820-821-822-823-824-825-826-827-828-829-830-831-832-833-834-835-836-837-838-839-840-841-842-843-844-845-846-847-848-849-850-851-852-853-854-855-856-857-858-859-860-861-862-863-864-865-866-867-868-869-870-871-872-873-874-875-876-877-878-879-880-881-882-883-884-885-886-887-888-889-890-891-892-893-894-895-896-897-898-899-900-901-902-903-904-905-906-907-908-909-910-911-912-913-914-915-916-917-918-919-920-921-922-923-924-925-926-927-928-929-930-931-932-933-934-935-936-937-938-939-940-941-942-943-944-945-946-947-948-949-950-951-952-953-954-955-956-957-958-959-960-961-962-963-964-965-966-967-968-969-970-971-972-973-974-975-976-977-978-979-980-981-982-983-984-985-986-987-988-989-990-991-992-993-994-995-996-997-998-999-1000-1001-1002-1003-1004-1005-1006-1007-1008-1009-1010-1011-1012-1013-1014-1015-1016-1017-1018-1019-1020-1021-1022-1023-1024-1025-1026-1027-1028-1029-1030-1031-1032-1033-1034-1035-1036-1037

## Atmosphere: Keeping the Air Clean

Our goal is to ensure the impact on the atmosphere is as low as possible

The potential effects on the atmosphere include changes in air quality, greenhouse gas (GHG) emissions, and noise and vibration levels. AREVA assessed the potential effects of the Kiggavik Project on air quality, climate change, noise and vibration in the local and regional area.

» To minimize the effect on the air, AREVA will

- Impose speed limits and reduce traffic dust. Over the life of the mine, mine rock stockpiles will be covered and revegetation of the crevices encouraged.
- Use energy efficient equipment as much as possible, reduce fuel use and lower dust.
- Regularly maintain equipment to limit noise and vibrations, and implement a complaint procedure.

» The results of AREVA's assessment indicate that

- There will be an increase in air contaminants, but these will be local and kept low.
- The Project will result in the release of greenhouse gases, similar to that generated by Meadowbank.
- Noise levels will be generated by the Project. These will be most noticeable during the construction phase, but less so during operations.

**AREVA is committed to protect air quality**

Our assessment shows that levels of dust, metals, radionuclides and gases in the air will increase in the local area around the project. Noise will be noticeable around the Project area and at the Baker Lake dock site from the loading and transport of project materials. However, AREVA has plans and procedures to reduce these effects.

For more information on AREW's assessment of project effects to fish or, refer to our Draft Environmental Impact Statement. Atmospheric effects: Tier 2 Volume 4.

**IQ Influence:** AREVA received consistent feedback to design the Kiggavik Project for the unique environmental conditions of Nunavut, including taking into consideration the wind. Nunavutmi identified dust control as a priority concern, and as such AREVA included numerous design and management features to minimize dust and is committed to implement a procedure to address potential community complaints related to dust.



**Figure B.1-2 Display Panel – Atmosphere. English (above), Inuktitut (below)**

የሪፖርት ስራ: የሪ ኤፒዲሚዮሎጂ

$$43L\Delta c^{9b}n3\Delta^{9b}C\Delta c\sigma\Delta^{9b}C^{9c} / c$$
[illegible]

$\Delta L^a \Delta C^b \Delta P^c \Delta T^d \Delta S^e$  /  $\Delta L^a \Delta C^b \Delta P^c \Delta T^d \Delta S^e$

ፊደላዊና ስነ-ቴክኖሎጂ ማሳደግና ማስፈጸም ለሚችሉ ሰራተኛው ሰዎች ስለሚገኝ ልዩ ምርጫ ማድረግ ማስቻል አለባቸው፡፡

[illegible]

4. ለጋራ ስራ ማስፈጸም የሚያስፈልጉ ሰው ሀብት ለማግኘት ማስፈጸሙን ያረጋግጣል።  
 5. ለጋራ ስራ ማስፈጸም የሚያስፈልጉ ሰው ሀብት ለማግኘት ማስፈጸሙን ያረጋግጣል።  
 6. ለጋራ ስራ ማስፈጸም የሚያስፈልጉ ሰው ሀብት ለማግኘት ማስፈጸሙን ያረጋግጣል።  
 7. ለጋራ ስራ ማስፈጸም የሚያስፈልጉ ሰው ሀብት ለማግኘት ማስፈጸሙን ያረጋግጣል።  
 8. ለጋራ ስራ ማስፈጸም የሚያስፈልጉ ሰው ሀብት ለማግኘት ማስፈጸሙን ያረጋግጣል።  
 9. ለጋራ ስራ ማስፈጸም የሚያስፈልጉ ሰው ሀብት ለማግኘት ማስፈጸሙን ያረጋግጣል።  
 10. ለጋራ ስራ ማስፈጸም የሚያስፈልጉ ሰው ሀብት ለማግኘት ማስፈጸሙን ያረጋግጣል።

ଦଳିତମାନଙ୍କ ସ୍ୱାଧୀନତା ପାଇଁ ଲଢ଼ିବା ପାଇଁ ସମସ୍ତଙ୍କୁ ଉତ୍ସାହିତ କରାଯାଉ

[illegible][illegible]

የሰነዱ አጠቃላይ ዋና ዋና ክፍሎች የሆኑት ለጥያቄው ለሚያስፈልጉት ሰነድ  
የሰነዱ አጠቃላይ ዋና ዋና ክፍሎች የሆኑት ለጥያቄው ለሚያስፈልጉት ሰነድ  
የሰነዱ አጠቃላይ ዋና ዋና ክፍሎች የሆኑት ለጥያቄው ለሚያስፈልጉት ሰነድ



AREVA assessed the potential impact of the Kiggavik Project on marine mammals and fish. The potential effects on marine life includes vessel strikes and noise.

- Impose speed limits and specific routes for vessels.
- Ensure vessels are well maintained to reduce unnecessary noise.
- Have marine mammal monitors on board vessels.

A marine mammal fatality is an unlikely event over the life of the Project. All vessel strikes, near-misses and sightings will be recorded.

Beluga whales and ringed seals will be exposed to less than half of the noise levels required to cause a behavioral response.

Underwater noise may be detectable to fish and cause a behavioural response when they are within 500m of the vessel. This effect no longer occurs as soon as the vessel passes.

Our assessment demonstrates that given the low frequency of vessel transit – maximum 31 barges per season – and the low intensity of noise disturbance from these vessels, all potential effects are low.

For more information on AREN's assessment of marine life refer to our Draft Environmental Impact Statement, Vol 2 Volume 2.

**IQ Influence:** Chesterfield inlet hunters and trappers participated in the baseline surveys and shared valuable information. We learned and incorporated in AREV's plans the fact that beluga herd arrive from Churchill in August and that the herd from Fovea Basin arrive in early summer.

Рублев А.А. 1943

[illegible][illegible]

ለጥላባቸው ጋራ ልማድ ልማድ ልማድ ልማድ ልማድ ልማድ  
ጋራ ልማድ ልማድ ልማድ ልማድ ልማድ ልማድ ልማድ  
ለጥላባቸው ጋራ ልማድ ልማድ ልማድ ልማድ ልማድ ልማድ

የፌዴራል ኮሌጅ ልማትና ምርምር ቢሮ

[illegible]

የፌዴራል ምርመራ ቢሮ የፖለቲካ አስተዳደር ዘርፍ - 31  
ንድፍ ዕቅድ - ሊያስፈልግ ይችላል

የዘጠኝ ስም: የጥንታዊ የግብርና ስርዓት

ፈልጎት የሚያስፈልጉትን ስም ይጻፉ፡

ፊርማዎን በቅርብ ቀን ያውጡ፡

## Human Health: Protecting Workers and the Public

**We work to protect the health of  
workers and the public wherever  
we operate**

AREVA carefully examined potential health hazards to workers and the public as part of its draft environmental impact statement for the Kiggavik Project. These hazards include workplace injuries and exposure to hazardous materials or radioactivity.

» To protect human health, AREVA will

- Ensure workers wear personal protective equipment (PPE), such as safety glasses, hardhats and steel-toed boots.
- Design and build facilities to protect worker safety, with features such as lead shield and ventilation systems.
- Carefully monitor exposures to ensure they are below safe limits for workers and the public.

AREVA's assessment indicates that

- Exposure to radioactivity or hazardous material will increase overall but with protective and preventative measures in place they will remain below levels that would cause health concerns.

**AREVA is committed to the health of our workers and the public near our operations**

Our assessment demonstrates that the health risk to workers and the public is quite low. Exposures to workers or the public will be below the established safety limits.

For more information on AREVA's assessment of health effects refer to our Draft Environmental Impact Statement, Tier 2 Volume 8.

**IQ information** shared on Kivalliq diet supported the human health assessment that demonstrates no public or worker human health effects.

**Figure B.1-4 Display Panel – Human Health. English (above), Inuktitut (below)**

[illegible]



**AREVA's Kiggavik Project would benefit the region's economy and communities**

➤ To provide socioeconomic benefits, AREVA will

➤ To provide socioeconomic benefits, AREVA will

- **These policies for preferential hiring and contracting in Nurture.** Train new workers for employment and train existing workers for promotion. Training will begin prior to the operation of the site.
- **Value and encourage maintaining traditional skills, language and cultural values.**
- **Revenues to the government and host organizations can be used to provide infrastructure and services.**

AREVA's assessment indicates that

- The Kiggavik Project will create hundreds of employment and business opportunities.
- Project will not force or require change to traditional culture but some drift away is expected, particularly in context of other forces or cultural changes.
- Training will be an ongoing component of workforce development.

**AREVA is committed to partnering with local communities**

Our assessment demonstrates that the Kiggavik Project will provide a large increase in the gross domestic product of Nunavut, along with employment, income, and revenues to NIT and the government of Nunavut.

For more information on AREMA's assessment of socioeconomic effects refer to our Draft Environmental Impact Statement, Tier 2 Volume 6.

**IQ interviews** and homeland visits helped to identify locations of known graves and archaeological sites by elders so the sites could be recorded and properly respected. IQ interviews have also helped to communicate to AREVA that both a wage-based and land-based economy are important to tribal well-being.



РЪЛДЪГ АСАДЪРЪЛЪГ

Δ.δ/Γ.Ν.σ<sup>100</sup>-Ρ.α.β/Γ.Ν.σ<sup>100</sup>: Α.Γ.Ν.Δ.β.γ.δ.ε<sup>100</sup>Π.ζ/σ<sup>100</sup> Δ.Γ.Δ. Δ.α.Γ.γ.Γ.δ.ε Δ.β.γ.Π.β.γ.γ.Π.σ.β

၎င်းတို့သည် ပုလဲအား အောင်မြင်စွာ  
 အောင်မြင်စွာ ရရှိခဲ့ပြီး ပုလဲအား အောင်မြင်စွာ  
 ရရှိခဲ့ပြီး ပုလဲအား အောင်မြင်စွာ

[illegible]

»  $\Delta b \times 2 \pi \times 10^6 \text{ Hz} / \text{m}^2 \times \Delta \rho / \rho \times 10^6 \text{ g/cm}^3 \times \Delta \rho / \rho \times 10^6 \text{ g/cm}^3$   
 $\Delta \rho / \rho \times 10^6 \text{ g/cm}^3 \times \Delta \rho / \rho \times 10^6 \text{ g/cm}^3$

- [illegible]

» ልሊጁ ምድር ስልጣን ለመስጠት ለገዢው ልዩ ምክር ቤቅ አቅርቧል።

1. የፌዴራል ሥልጣን ለፌዴራል መንግሥት ብቻ ነው።  
 2. የዘርፍ ሥልጣን ለዘርፍ መንግሥት ብቻ ነው።  
 3. የክልል ሥልጣን ለክልል መንግሥት ብቻ ነው።  
 4. የከተማ ሥልጣን ለከተማ መንግሥት ብቻ ነው።  
 5. የግንባታ ሥልጣን ለግንባታ መንግሥት ብቻ ነው።  
 6. የፍትሕ ሥልጣን ለፍትሕ መንግሥት ብቻ ነው።  
 7. የብሔራዊ ሥልጣን ለብሔራዊ መንግሥት ብቻ ነው።  
 8. የጥቅም ሥልጣን ለጥቅም መንግሥት ብቻ ነው።  
 9. የጥበቃ ሥልጣን ለጥበቃ መንግሥት ብቻ ነው።  
 10. የጥበቃ ሥልጣን ለጥበቃ መንግሥት ብቻ ነው።

[illegible]

604-890-7424

මුදල් තෙවැනි වර්ෂයේදී ලැබෙන්නේ ඇමරිකානුවන්  
 මුදල් තේරුම් පිළිබඳව විමර්ශනය කළද ආදායම් පරිමාණය  
 මුදල් තේරුම් පිළිබඳව ඇමරිකානුවන් විසින්  
 විමර්ශනය කළද ඇමරිකානුවන් මුදල් තේරුම්  
 පිළිබඳව විමර්ශනය කළද ඇමරිකානුවන් මුදල්  
 තේරුම් පිළිබඳව විමර්ශනය කළද ඇමරිකානුවන් මුදල්  
 තේරුම් පිළිබඳව විමර්ශනය කළද ඇමරිකානුවන් මුදල්



bioRxiv preprint doi: <https://doi.org/10.1101/000000>; this version posted January 1, 2015. The copyright holder for this preprint (which was not certified by peer review) is the author/funder, who has granted bioRxiv a license to display the preprint in perpetuity. It is made available under aCC-BY-NC-ND 4.0 International license.

### Terrestrial Effects: Promoting Respect for the Land

**We care about the land and will work to protect it**

AREVA assessed the potential terrestrial effects of the Kiggavik Project on the terrain, soils and vegetation in the local and wider area. The potential effects include changes in permafrost conditions, terrain shape and stability, soil quality and quantity, as well as vegetation abundance, diversity and quality.

» To have the least possible effect on the land, AREVA will

- Install components on stable surfaces such as bedrock that contain low ground-ice.
- Design infrastructures to limit air emissions and suppress dust.
- Confine construction activities to the boundaries surveyed.

» The results of AREVA's assessment indicate that

- Earthworks to construct the Project will cause some changes to landforms and thawing of the permafrost, but these changes will be confined within and immediately next to the Project site.
- The ground disturbance that could result in lower soil quality will be within the Project site.
- Loss of vegetation and plant diversity is confined to construction locations within the Project area.

**AREVA is committed to protect the land**

Our assessment demonstrates that the effects of the Kiggavik Project will be low to moderate and limited to the Project area. The Project is designed with decommissioning in mind, including the preservation of soil cleared for later use during reclamation.

For more information on AREVA's assessment of terrorist effects refer to our Draft Environmental Impact Statement, "See 2.6.6.2.5."



**Figure B.1-6 Display Panel: Terrestrial Effects. English (above), Inuktitut (below).**

መፍገጥ: ልሳሳት ልማት

$$\Lambda^L L_{\Lambda} \triangleright \Pi^{\mathfrak{a}} \mathfrak{a} \triangleleft \Pi J \text{ 且 } \mathfrak{h} \triangleright L \Gamma \sigma \triangleleft \mathfrak{b} \triangleleft \mathfrak{g} \mathfrak{c}$$
[illegible][illegible]

1. 2019-2020-2021-2022-2023-2024-2025-2026-2027-2028-2029-2030-2031-2032-2033-2034-2035-2036-2037-2038-2039-2040-2041-2042-2043-2044-2045-2046-2047-2048-2049-2050-2051-2052-2053-2054-2055-2056-2057-2058-2059-2060-2061-2062-2063-2064-2065-2066-2067-2068-2069-2070-2071-2072-2073-2074-2075-2076-2077-2078-2079-2080-2081-2082-2083-2084-2085-2086-2087-2088-2089-2090-2091-2092-2093-2094-2095-2096-2097-2098-2099-2100-2101-2102-2103-2104-2105-2106-2107-2108-2109-2110-2111-2112-2113-2114-2115-2116-2117-2118-2119-2120-2121-2122-2123-2124-2125-2126-2127-2128-2129-2130-2131-2132-2133-2134-2135-2136-2137-2138-2139-2140-2141-2142-2143-2144-2145-2146-2147-2148-2149-2150-2151-2152-2153-2154-2155-2156-2157-2158-2159-2160-2161-2162-2163-2164-2165-2166-2167-2168-2169-2170-2171-2172-2173-2174-2175-2176-2177-2178-2179-2180-2181-2182-2183-2184-2185-2186-2187-2188-2189-2190-2191-2192-2193-2194-2195-2196-2197-2198-2199-2200-2201-2202-2203-2204-2205-2206-2207-2208-2209-2210-2211-2212-2213-2214-2215-2216-2217-2218-2219-2220-2221-2222-2223-2224-2225-2226-2227-2228-2229-2230-2231-2232-2233-2234-2235-2236-2237-2238-2239-2240-2241-2242-2243-2244-2245-2246-2247-2248-2249-2250-2251-2252-2253-2254-2255-2256-2257-2258-2259-2260-2261-2262-2263-2264-2265-2266-2267-2268-2269-2270-2271-2272-2273-2274-2275-2276-2277-2278-2279-2280-2281-2282-2283-2284-2285-2286-2287-2288-2289-2290-2291-2292-2293-2294-2295-2296-2297-2298-2299-2300-2301-2302-2303-2304-2305-2306-2307-2308-2309-2310-2311-2312-2313-2314-2315-2316-2317-2318-2319-2320-2321-2322-2323-2324-2325-2326-2327-2328-2329-2330-2331-2332-2333-2334-2335-2336-2337-2338-2339-2340-2341-2342-2343-2344-2345-2346-2347-2348-2349-2350-2351-2352-2353-2354-2355-2356-2357-2358-2359-2360-2361-2362-2363-2364-2365-2366-2367-2368-2369-2370-2371-2372-2373-2374-2375-2376-2377-2378-2379-2380-2381-2382-2383-2384-2385-2386-2387-2388-2389-2390-2391-2392-2393-2394-2395-2396-2397-2398-2399-2400-2401-2402-2403-2404-2405-2406-2407-2408-2409-2410-2411-2412-2413-2414-2415-2416-2417-2418-2419-2420-2421-2422-2423-2424-2425-2426-2427-2428-2429-2430-2431-2432-2433-2434-2435-2436-2437-2438-2439-2440-2441-2442-2443-2444-2445-2446-2447-2448-2449-2450-2451-2452-2453-2454-2455-2456-2457-2458-2459-2460-2461-2462-2463-2464-2465-2466-2467-2468-2469-2470-2471-2472-2473-2474-2475-2476-2477-2478-2479-2480-2481-2482-2483-2484-2485-2486-2487-2488-2489-2490-2491-2492-2493-2494-2495-2496-2497-2498-2499-2500-2501-2502-2503-2504-2505-2506-2507-2508-2509-2510-2511-2512-2513-2514-2515-2516-2517-2518-2519-2520-2521-2522-2523-2524-2525-2526-2527-2528-2529-2530-2531-2532-2533-2534-2535-2536-2537-2538-2539-2540-2541-2542-2543-2544-2545-2546-2547-2548-2549-2550-2551-2552-2553-2554-2555-2556-2557-2558-2559-2560-2561-2562-2563-2564-2565-2566-2567-2568-2569-2570-2571-2572-2573-2574-2575-2576-2577-2578-2579-2580-2581-2582-2583-2584-2585-2586-2587-2588-2589-2590-2591-2592-2593-2594-2595-2596-2597-2598-2599-2600-2601-2602-2603-2604-2605-2606-2607-2608-2609-2610-2611-2612-2613-2614-2615-2616-2617-2618-2619-2620-2621-2622-2623-2624-2625-2626-2627-2628-2629-2630-2631-2632-2633-2634-2635-2636-2637-2638-2639-2640-2641-2642-2643-2644-2645-2646-2647-2648-2649-2650-2651-2652-2653-2654-2655-2656-2657-2658-2659-2660-2661-2662-2663-2664-2665-2666-2667-2668-2669-2670-2671-2672-2673-2674-2675-2676-2677-2678-2679-2680-2681-2682-2683-2684-2685-2686-2687-2688-2689-2690-2691-2692-2693-2694-2695-2696-2697-2698-2699-2700-2701-2702-2703-2704-2705-2706-2707-2708-2709-2710-2711-2712-2713-2714-2715-2716-2717-2718-2719-2720-2721-2722-2723-2724-2725-2726-2727-2728-2729-2730-2731-2732-2733-2734-2735-2736-2737-2738-2739-2740-2741-2742-2743-2744-2745-2746-2747-2748-2749-2750-2751-2752-2753-2754-2755-2756-2757-2758-2759-2760-2761-2762-2763-2764-2765-2766-2767-2768-2769-2770-2771-2772-2773-2774-2775-2776-2777-2778-2779-2780-2781-2782-2783-2784-2785-2786-2787-2788-2789-2790-2791-2792-2793-2794-2795-2796-2797-2798-2799-2800-2801-2802-2803-2804-2805-2806-2807-2808-2809-2810-2811-2812-2813-2814-2815-2816-2817-2818-2819-2820-2821-2822-2823-2824-2825-2826-2827-2828-2829-2830-2831-2832-2833-2834-2835-283

» 4ኢጫዕሮ ነፅጉኑን በጥራት ከፍተኛ ለወጪ ርዕሰ ሥራ

- [illegible]

[illegible][illegible]

© 2016 Pearson Education, Inc. or its affiliate(s). All rights reserved.





## Terrestrial Wildlife: Co-existing With Healthy Wildlife

**Our goal is to disrupt wildlife as little as possible**

AREVA assessed the potential environmental effects of the Ruggvik Project on wildlife. Detailed assessments were conducted on caribou, muskox, wolverine, grizzly bear, lapland longspur, long-tailed duck, peregrine falcon and short-eared owl. Potential effects on wildlife include possible changes in habitat, health, movement and mortality.

» To protect wildlife, AREVA will

- Respect the caribou protection measures and design to ensure a buffer around designated water crossings, maintain caribou right-of-way where possible and safe; limit driving speeds and traffic; and enforce temporary road shutdowns.

- Minimize the Project site footprint and activities outside that footprint.  
Provide dust suppression during dry summer periods.

» The results of AREVA's assessment indicate that

- Wildlife habitat will be temporarily unavailable and some habitat will be of reduced quality due to disturbances within the mine site and near the access road. This affect will largely be reversed when habitat reclamation is implemented.
- There will be a small number of road kills due to wildlife-vehicle collisions.
- Nest site productivity may be reduced during the construction of the north all-season road.



**AREVA wants healthy, abundant and available wildlife for harvest**

Mortality effects will be undetectable at a local scale (less than one caribou per year). Changes in habitat availability are a small fraction of available habitat and although some caribou may avoid the line, temporary road closures and the limited Project footprint will result in a low and not significant effect on movement. Many effects, including changes in habitat, are largely reversible with decommissioning.

**IQ Influence:** Thanks to IQ and community input AREVA made changes to the baseline studies, including a reduction of overhead lights and an increase in collaborative studies and ground based monitoring. IQ interviews also helped identify additional potential canbou water crossings in the area that we included in the assessment and Project design.



For more information on ARCAD's assessment of wildlife refer to our Draft Environmental Impact Statement, Tier 2, Volume II.

**Figure B.1-7 Display Panel: Terrestrial Wildlife. English (above), Inuktitut (below)**

**መፈ ጎረቤት- ጎረቤትና ልብናልብ**

ᐅᓚᓴᑦ ᐃᑐᐃᓴᑐᐃᑦᑕᐃᑦᓴᓚᓴᑦ

[illegible][illegible]

- [illegible]

- [illegible]

[illegible]

- [illegible]

[illegible]

1. 2. 3. 4. 5. 6. 7. 8. 9. 10. 11. 12. 13. 14. 15. 16. 17. 18. 19. 20. 21. 22. 23. 24. 25. 26. 27. 28. 29. 30. 31. 32. 33. 34. 35. 36. 37. 38. 39. 40. 41. 42. 43. 44. 45. 46. 47. 48. 49. 50. 51. 52. 53. 54. 55. 56. 57. 58. 59. 60. 61. 62. 63. 64. 65. 66. 67. 68. 69. 70. 71. 72. 73. 74. 75. 76. 77. 78. 79. 80. 81. 82. 83. 84. 85. 86. 87. 88. 89. 90. 91. 92. 93. 94. 95. 96. 97. 98. 99. 100. 101. 102. 103. 104. 105. 106. 107. 108. 109. 110. 111. 112. 113. 114. 115. 116. 117. 118. 119. 120. 121. 122. 123. 124. 125. 126. 127. 128. 129. 130. 131. 132. 133. 134. 135. 136. 137. 138. 139. 140. 141. 142. 143. 144. 145. 146. 147. 148. 149. 150. 151. 152. 153. 154. 155. 156. 157. 158. 159. 160. 161. 162. 163. 164. 165. 166. 167. 168. 169. 170. 171. 172. 173. 174. 175. 176. 177. 178. 179. 180. 181. 182. 183. 184. 185. 186. 187. 188. 189. 190. 191. 192. 193. 194. 195. 196. 197. 198. 199. 200. 201. 202. 203. 204. 205. 206. 207. 208. 209. 210. 211. 212. 213. 214. 215. 216. 217. 218. 219. 220. 221. 222. 223. 224. 225. 226. 227. 228. 229. 230. 231. 232. 233. 234. 235. 236. 237. 238. 239. 240. 241. 242. 243. 244. 245. 246. 247. 248. 249. 250. 251. 252. 253. 254. 255. 256. 257. 258. 259. 260. 261. 262. 263. 264. 265. 266. 267. 268. 269. 270. 271. 272. 273. 274. 275. 276. 277. 278. 279. 280. 281. 282. 283. 284. 285. 286. 287. 288. 289. 290. 291. 292. 293. 294. 295. 296. 297. 298. 299. 300. 301. 302. 303. 304. 305. 306. 307. 308. 309. 310. 311. 312. 313. 314. 315. 316. 317. 318. 319. 320. 321. 322. 323. 324. 325. 326. 327. 328. 329. 330. 331. 332. 333. 334. 335. 336. 337. 338. 339. 340. 341. 342. 343. 344. 345. 346. 347. 348. 349. 350. 351. 352. 353. 354. 355. 356. 357. 358. 359. 360. 361. 362. 363. 364. 365. 366. 367. 368. 369. 370. 371. 372. 373. 374. 375. 376. 377. 378. 379. 380. 381. 382. 383. 384. 385. 386. 387. 388. 389. 390. 391. 392. 393. 394. 395. 396. 397. 398. 399. 400. 401. 402. 403. 404. 405. 406. 407. 408. 409. 410. 411. 412. 413. 414. 415. 416. 417. 418. 419. 420. 421. 422. 423. 424. 425. 426. 427. 428. 429. 430. 431. 432. 433. 434. 435. 436. 437. 438. 439. 440. 441. 442. 443. 444. 445. 446. 447. 448. 449. 450. 451. 452. 453. 454. 455. 456. 457. 458. 459. 460. 461. 462. 463. 464. 465. 466. 467. 468. 469. 470. 471. 472. 473. 474. 475. 476. 477. 478. 479. 480. 481. 482. 483. 484. 485. 486. 487. 488. 489. 490. 491. 492. 493. 494. 495. 496. 497. 498. 499. 500. 501. 502. 503. 504. 505. 506. 507. 508. 509. 510. 511. 512. 513. 514. 515. 516. 517. 518. 519. 520. 521. 522. 523. 524. 525. 526. 527. 528. 529. 530. 531. 532. 533. 534. 535. 536. 537. 538. 539. 540. 541. 542. 543. 544. 545. 546. 547. 548. 549. 550. 551. 552. 553. 554. 555. 556. 557. 558. 559. 560. 561. 562. 563. 564. 565. 566. 567. 568. 569. 570. 571. 572. 573. 574. 575. 576. 577. 578. 579. 580. 581. 582. 583. 584. 585. 586. 587. 588. 589. 590. 591. 592. 593. 594. 595. 596. 597. 598. 599. 600. 601. 602. 603. 604. 605. 606. 607. 608. 609. 610. 611. 612. 613. 614. 615. 616. 617. 618. 619. 620. 621. 622. 623. 624. 625. 626. 627. 628. 629. 630. 631. 632. 633. 634. 635. 636. 637. 638. 639. 640. 641. 642. 643. 644. 645. 646. 647. 648. 649. 650. 651. 652. 653. 654. 655. 656. 657. 658. 659. 660. 661. 662. 663. 664. 665. 666. 667. 668. 669. 670. 671. 672. 673. 674. 675. 676. 677. 678. 679. 680. 681. 682. 683. 684. 685. 686. 687. 688. 689. 690. 691. 692. 693. 694. 695. 696. 697. 698. 699. 700. 701. 702. 703. 704. 705. 706. 707. 708. 709. 710. 711. 712. 713. 714. 715. 716. 717. 718. 719. 720. 721. 722. 723. 724. 725. 726. 727. 728. 729. 730. 731. 732. 733. 734. 735. 736. 737. 738. 739. 740. 741. 742. 743. 744. 745. 746. 747. 748. 749. 750. 751. 752. 753. 754. 755. 756. 757. 758. 759. 760. 761. 762. 763. 764. 765. 766. 767. 768. 769. 770. 771. 772. 773. 774. 775. 776. 777. 778. 779. 780. 781. 782. 783. 784. 785. 786. 787. 788. 789. 790. 791. 792. 793. 794. 795. 796. 797. 798. 799. 800. 801. 802. 803. 804. 805. 806. 807. 808. 809. 810. 811. 812. 813. 814. 815. 816. 817. 818. 819. 820. 821. 822. 823. 824. 825. 826. 827. 828. 829. 830. 831. 832. 833. 834. 835. 836. 837. 838. 839. 840.

[illegible]

ଆମ ସମସ୍ତଙ୍କର ଏହି ସମ୍ପାଦନାରେ ଉଲ୍ଲେଖ କରାଯାଇଛି ଯେ ଏହି ପତ୍ରଟି  
ସମ୍ପାଦନା କରାଯାଇଛି ଓ ନିମ୍ନଲିଖିତ ଅନୁସାରେ ଅଛି:

ከበ/ሪፎ ፋኔልልታ፡ ለሰላምናታሪሪፋ፡ ምክርባ፡ ርዕሰ፡ ሰላም፡

More information about AREX's assessment of potential cumulative effects is available in the Draft Environmental Impact Statement Title 1 Volume 1 Appendix 1B and throughout Title 2 Volumes 4 & 5.

2016-07-26 14:46:16

KIGGAVIK PROJECT  
PULAVI AGOQVILVIV

[illegible]

For more information on AED's assessment of accidents and infrastructure risks to our Drift Environmental Impact Statement, see [Drift's Website](#).

[illegible]

Kivalliq Community Information Sessions 2012  
Report  
Appendix B – Information Material



## Sustainable Development: Thinking Long Term

[illegible]

ባለቤቱ ለጥላቻው ጋራ ባለቤቱ ወይም ለጥላቻው ጋራ ባለቤቱ  
 ለጥላቻው ጋራ ባለቤቱ ለጥላቻው ጋራ ባለቤቱ  
 ለጥላቻው ጋራ ባለቤቱ ለጥላቻው ጋራ ባለቤቱ  
 ለጥላቻው ጋራ ባለቤቱ ለጥላቻው ጋራ ባለቤቱ

[illegible]

ለጥራት ምርት ለጥራት ምርት ለጥራት ምርት  
 ለጥራት ምርት ለጥራት ምርት ለጥራት ምርት  
 ለጥራት ምርት ለጥራት ምርት ለጥራት ምርት  
 ለጥራት ምርት ለጥራት ምርት ለጥራት ምርት  
 ለጥራት ምርት ለጥራት ምርት ለጥራት ምርት

We at AREVA understand that economic opportunity is welcomed by Nunavummiut but development is conditional on preserving a healthy environment and on the growth of vibrant communities.

Acknowledging effects associated with development, our extensive analysis has shown the Kiggavik Project will not compromise the ecosystem. Our work shows that this Project will have a positive overall effect on the region's economy and its communities. The life-long benefits of job experience and learning will extend beyond the Project.

We commit to consult and engage with Nunavummiut with openness and transparency and to learn more about how we can be a successful, long-term partner and members of the community.



**Figure B.1-10 Display Panel: Sustainable Development**



**Figure B.1-11 Display Panel: Significance**

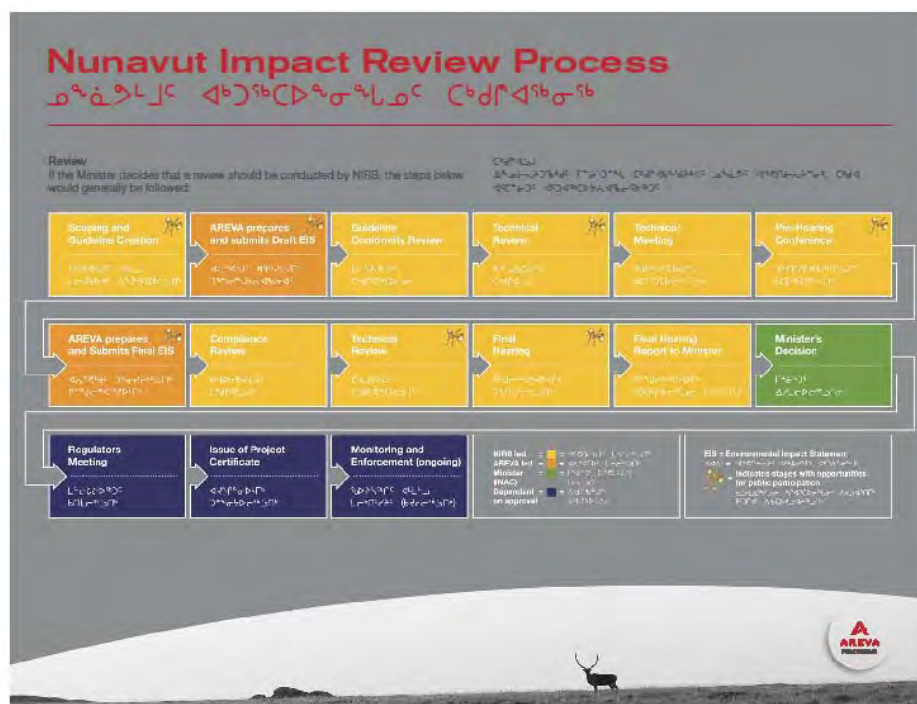


Figure B.1-13 Display Panel: Nunavut Impact Review Process

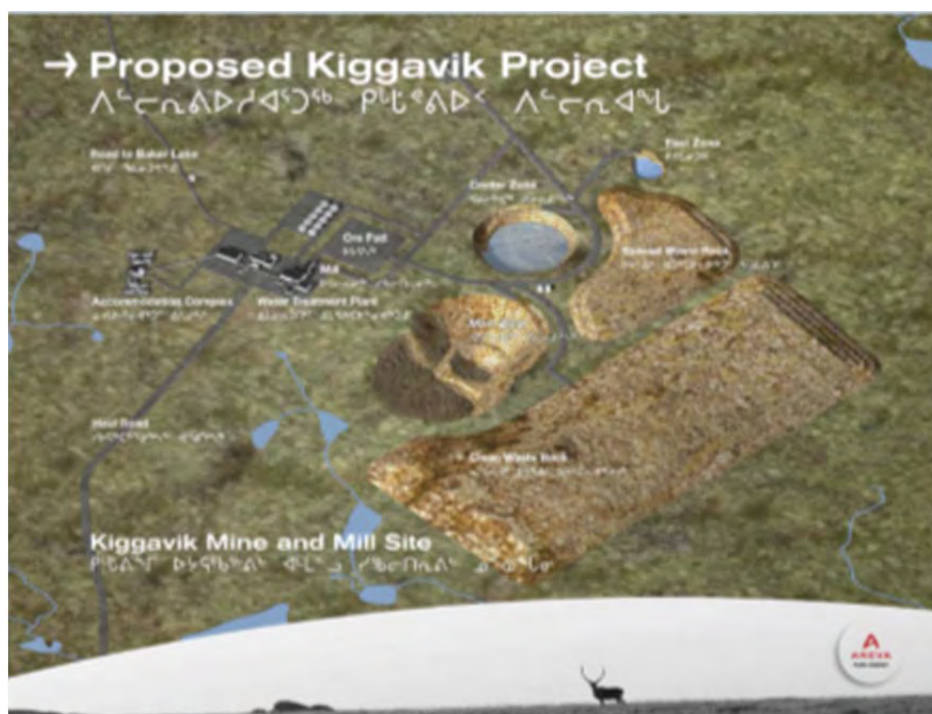


Figure B.1-14 Display Panel: Proposed Kiggavik Project



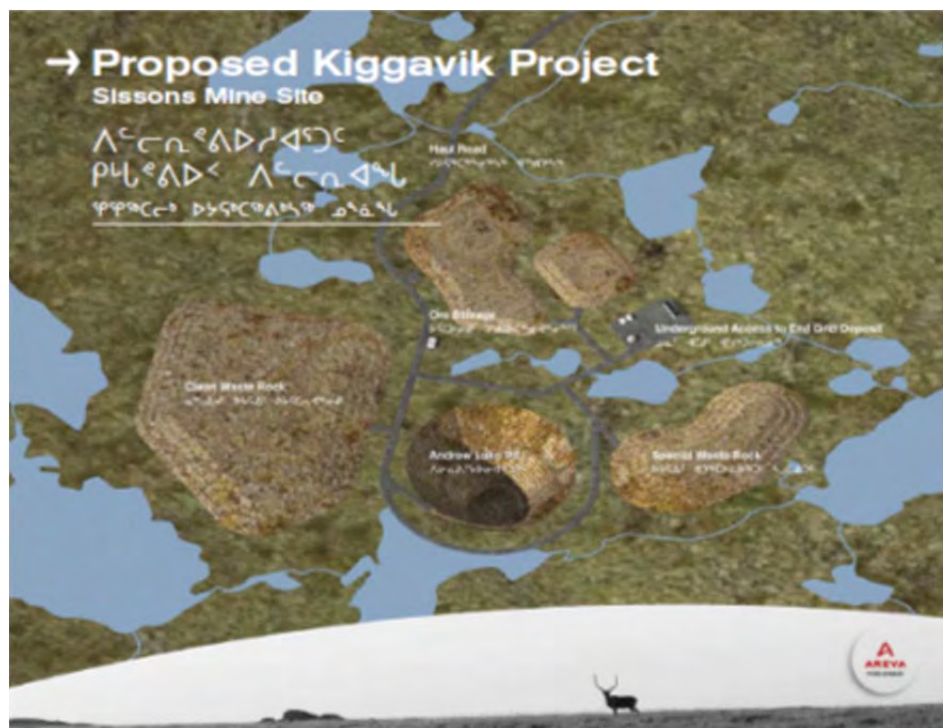
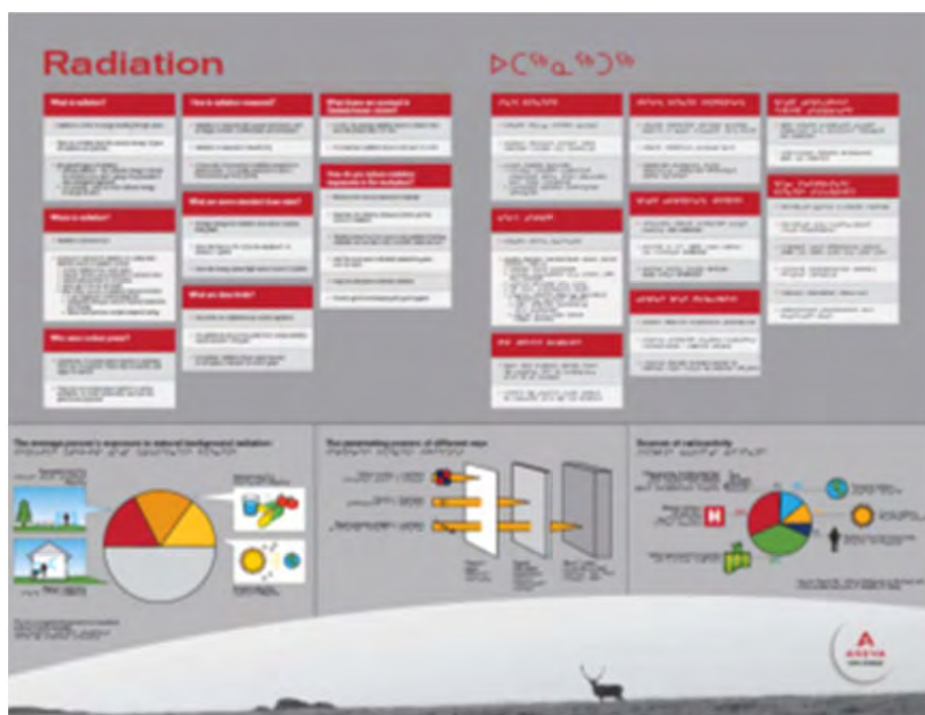


Figure B.1-15 Display Panel: Proposed Kiggavik Project



## **APPENDIX C COMMENT FORMS AND WORKBOOK**

---



## **C-2. SIGNIFICANCE WORKBOOK**

A significance Workbook was prepared as an aid for the significance workshops held. The Significance Workbook is shown below in English and Inuktitut.





## KIGGAVIK PROJECT Determining Significance

2012

AREVA is developing a proposed uranium mining and milling operation called the Kiggavik Project, which would bring positive economic opportunities to the region. AREVA must first demonstrate that the Kiggavik Project will not compromise the land or the people to receive a positive environmental assessment decision.

Environmental assessment is used as a sustainable development tool to design and adjust a project to balance environment, people and economics.

Through scientific studies, community consultation and the gathering of local IQ, AREVA and its consultants has gained substantial knowledge of the land and its people. This information provides a baseline of how the land currently exists prior to development. When combined with plans our engineers have developed for accessing and processing ore, we are provided with the ability to evaluate the various ways the project could interact with the environment and its people.

We studied this information so that we could maximize the positive effects and minimize the negative ones. Some examples include the use of air pollution controls on exhaust stacks, regular vehicle maintenance to reduce emissions and promote effective fuel consumption, and providing training for beneficiaries to increase job satisfaction and retention. A full list of these approaches is located in Tier 1, Appendix 1D of the Kiggavik DEIS.

Sometimes different approaches can completely remove the potential effect of a project on the environment. For example, spring water runoff that potentially could be contaminated running through the mine site can be diverted around the site. The remaining potential effects after all these improvements are called residual effects. We carefully evaluated the effects to determine how significant they could be. When considering if an effect is significant we looked at

1. if the effect was positive, negative or neutral (direction)
2. how big of a change it would be from before the project was developed (magnitude)
3. over how big of an area (geographic extent)
4. number of times the effect may occur – once to sporadically to continuously (frequency)
5. over how much time the effect may occur from short-term to permanent (duration)
6. if the effect was irreversible or reversible (reversibility)
7. any additional considerations (ecological or socioeconomic context)

We used standards, guidelines and regulatory requirements to determine acceptable levels of change in addition to resource management objectives, scientific literature and ecosystem function and integrity.

We want to know what you think is important when considering if an effect is significant. Please provide your feedback on the questions below:

Are there historical or cultural considerations that should influence significance?

Do you have IQ on environmental sensitivities we should consider?

What do you want AREVA to know when we are evaluating significance?

What mitigation measures or monitoring do you think we should consider?

Name: \_\_\_\_\_

Community: \_\_\_\_\_

Date: \_\_\_\_\_

1.  $\Delta^2 \sigma^2 \sigma^2 \sigma^2 \sigma^2 \sigma^2$   $\Delta^2 \sigma^2 \sigma^2 \sigma^2 \sigma^2 \sigma^2$   $\Delta^2 \sigma^2 \sigma^2 \sigma^2 \sigma^2 \sigma^2$



2. ክፍል ለጥያቄዎቹ ለመረጃ ማግኘት (ለሥራ ለማድረግ)
3. ክፍል ለጥያቄዎቹ ለመረጃ ማግኘት (ለሥራ ለማድረግ)
4. ክፍል ለጥያቄዎቹ ለመረጃ ማግኘት (ለሥራ ለማድረግ)
5. ክፍል ለጥያቄዎቹ ለመረጃ ማግኘት (ለሥራ ለማድረግ)
6. ክፍል ለጥያቄዎቹ ለመረጃ ማግኘት (ለሥራ ለማድረግ)
7. ክፍል ለጥያቄዎቹ ለመረጃ ማግኘት (ለሥራ ለማድረግ)

ከዚህ በታች ያሉትን ጥያቄዎች ለመረጃ ማግኘት ለማድረግ ይጠቀሙ፡

ክፍል ለጥያቄዎቹ ለመረጃ ማግኘት ለማድረግ ይጠቀሙ፡

ከዚህ በታች ያሉትን ጥያቄዎች ለመረጃ ማግኘት ለማድረግ ይጠቀሙ፡

ከዚህ በታች ያሉትን ጥያቄዎች ለመረጃ ማግኘት ለማድረግ ይጠቀሙ፡

ከዚህ በታች ያሉትን ጥያቄዎች ለመረጃ ማግኘት ለማድረግ ይጠቀሙ፡

ከዚህ በታች ያሉትን ጥያቄዎች ለመረጃ ማግኘት ለማድረግ ይጠቀሙ፡

Name ስም: \_\_\_\_\_

Community ማህበረሰብ: \_\_\_\_\_

Date ቀን: \_\_\_\_\_



## APPENDIX D SIGN-IN SHEETS

---

**Adults**

**AREVA**

**Kivalliq Open Houses 2012**  
Sign In Sheet

Date Nov 9 Sign In Sheet 1 of       
Location Arviat

Print Name

1. ELIZABETH - ALOU
2. Mrs. Vernon Isitaituk
3. April-Jean Pangushak
4. Melinda Samuk-Sook
5. VERA LEONARD
6. Betsy KAYAV IAITUK
7. Paul Isitaituk
8. Cecelia Akemmale
9. Jerry Pangushak
10. Sarah Rink
11. Anna Gibson
12. Rosie Ivuniguk
13. Samantha Umak
14. WINNIE PANISONIAK
15. Andrew Sudo
16. Lisa Alureak
17. William Kinniksik
18. MURRAY - ALOU
19. Mark Amuk
20. Luke Pauppa
21. Peter Suk - KAT
22. Evan Kinnik
23. Bobby Isitaituk
24. Christopher Konek
25. Linda Narasimhan


**Kivalliq Open Houses 2012**  
Sign In Sheet

Date Nov 9 2012 Sign In Sheet 2 of       
Location Arviat

Print Name

1. Jean Alureak
2. Peter Mangorik Sr.
- 3.
- 4.

**Figure D.1-1 Sign-In Sheet – Arviat**



**Kivalliq Open Houses 2012**  
Sign In Sheet

Date Oct 30, 2012      1 of 4

Location Baker Lake

Print Name

1. Silas Aittoua
2. Josephine Aittoua
3. John Aittoua
4. John Aittoua
5. Samson Aittoua
6. John Aittoua
7. John Aittoua
8. Samson Aittoua
9. Samson Aittoua
10. Samson Aittoua
11. Samson Aittoua
12. Samson Aittoua
13. Samson Aittoua
14. Samson Aittoua
15. Samson Aittoua
16. Samson Aittoua
17. Samson Aittoua
18. Samson Aittoua
19. Samson Aittoua
20. Samson Aittoua
21. Samson Aittoua
22. Samson Aittoua
23. Samson Aittoua
24. Samson Aittoua
25. Samson Aittoua

**Kivalliq Open House**  
Sign In Sheet

Date 10/29/12

Location Baker Lake

Print Name

1. Angus Parker
2. Jessie Kemloag
3. Peter Munkplaw
4. Kevin Munkplaw
5. Nadine Kallana
6. Isaac
7. Martha Sarah
8. Samson Sarah
9. Mika Ruyuk
10. Hayley Harkailok
11. Josephine Aittoua
12. John Aittoua
13. Nadine Kallana
14. Samson Aittoua
15. Eva Elitook
16. Corrie Aupaluktuq
17. Diane Taggaat
18. Ken Harkin
19. Danley Taggaat
20. Samson Aittoua
21. Brandon Aittoua
22. John Aittoua
23. Samson Aittoua
24. Samson Aittoua
25. Samson Aittoua

Figure D.1-2 Sign-In Sheet Baker Lake

**Kivalliq Open H**  
Sign In S

Date 02 Nov. 2012  
Location Chesterfield Inlet

Print Name

1. NIPA ALODOT
2. Emilie Turtak
3. Margaret Papad
4. Jennifer Osmato
5. [unclear]
6. [unclear]
7. [unclear]
8. Elizabeth Tautel
9. [unclear]
10. [unclear]
11. [unclear]
12. [unclear]
13. [unclear]
14. Christy Aoutok
15. Billie Jo Tutulik
16. Angelina Smith
17. Pauline Mimalik
18. [unclear]
19. [unclear]
20. [unclear]
21. [unclear]
22. Jeannine Ippol
23. [unclear]
24. EVA [unclear]
25. [unclear]

**Kivalliq Open H**  
Sign In S

Date 02 Nov 2012  
Location Chesterfield Inlet

Print Name

1. [unclear]
2. [unclear]
3. Kelly Aggarik
4. [unclear]
5. [unclear]
6. [unclear]
7. [unclear]
8. [unclear]
9. [unclear]
10. [unclear]
11. [unclear]
12. [unclear]
13. [unclear]
14. [unclear]
15. [unclear]
16. [unclear]
17. [unclear]
18. [unclear]
19. [unclear]
20. [unclear]
21. [unclear]
22. [unclear]
23. [unclear]
24. [unclear]
25. [unclear]



**Kivalliq Open Houses 2012**  
Sign In Sheet

Date Nov 3, 2012      1 of 1  
Location Chesterfield Inlet

Print Name

1. [unclear]
2. [unclear]
3. [unclear]
4. [unclear]
5. [unclear]
6. [unclear]
7. [unclear]
8. [unclear]
9. [unclear]
10. [unclear]
11. [unclear]
12. [unclear]
13. [unclear]

**Figure D.1-3 Sign-In Sheets Chesterfield Inlet**



**AREVA**

**Kivalliq Open Houses 2012**

Sign In Sheet


Date October 31 of 1

Location Coral

Print Name

1. Amelia Netser
2. Melanie Misheralat
3. RONNIE NINGEONGAN
4. Randy Kataluk
5. Sami Netser
6. Matthew Netser
7. WORTH KATALUK
8. Dannon Mukonak
9. UASACD
10. DANNY PEE
11. DLK
12. D. J. N
13. Dr. A. N
14. JD Angpo tealik
15. Akanak Oloke
15. JOSEFF V 9K 80/9K
17. Kathryn Stewart
18. Hope Samakink
19. Nug Arvutuk
20. Halley Jones
21. Elizabeth B. Savinkjuk
22. \_\_\_\_\_
23. \_\_\_\_\_

**Figure D.1-4 Sign-In Sheets Coral Harbour**



**Kivalliq Open Houses 2012**

Date Nov 5 2012  
 Location Rankin Inlet

Print Name

1. Veronica Tattuinec
2. Timothy vujuk
3. Emily Anne Kammak
4. Paul Pissuk
5. Tommy Bruce
6. Benji Snuff
7. Leah Gibbons
8. C Amarok
9. Dennie Kepuk
10. Ester Patig
11. Joseph Hamilton
12. Sarah Tueak
13. Natalie Utinnar
14. Suzie Wiebe
15. Abe Wiebe
16. Marie Tintod
17. Avey WIEBE
18. Ken Beardall
19. Susan Samgushak
20. Louise Samgushak
21. Simon Kelit
22. Paul Aulook
23. Doreen L. Aulook
24. Linda Aulook
25. BETTY Aulook

**Kivalliq Open Houses 2012**  
Sign In Sheet

Date Nov 5, 2012 2 0  
 Location Rankin Inlet

Print Name

1. Mary Angidlik
2. Danny Aulook
3. Emily Beardall
4. Lizette Tanguay
5. Joe Patterson
6. Manasse Kibikop
7. Lyle Wiebe
8. \_\_\_\_\_

**AREVA Resources Canada Inc.**  
 P.O. Box 0004 - 517 - 45<sup>th</sup> Street West - Saskatoon, SK S7K 3X5 - CAN  
 Tel: 1 (306) 343-4500 - Fax: 1 (306) 953-3803 - Web Site: www.areva.ca

**Kivalliq Open Houses 2012**  
Sign In Sheet

Date Nov 5, 2012  
 Location Rankin Inlet

Print Name

1. Joseph Hamilton
2. Patrick Beardall Jr
3. Billy Stuckland Jr
4. \_\_\_\_\_
5. \_\_\_\_\_
6. \_\_\_\_\_

**Figure D.1-5-1 Sign-In Sheets Rankin Inlet**

Kids under 16 \*

**AREVA**

**Kivalliq Open Houses 2012**  
Sign In Sheet

Date Nov 5 2012 Date Nov 5 2012  
Location Rankin Inlet Location Rankin

| Print Name                             | Print Name               |
|--|--------------------------|
| 1. Veronica Tattumee                   | 1. Ester                 |
| 2. Timothy Wajuk                       | 2. Issalak *             |
| 3. Emilyanne Kanarr                    | 3. Amber *               |
| 4. Ivan Innukshuk                      | 4. Brandon Taffy *       |
| 5. Luke Kangas                         | 5. LEO KALUDJAK *        |
| 6. Thomas Alooq *                      | 6. ROBE TANUYAK *        |
| 7. Paul Bissell                        | 7. Mutsa Wuksit *        |
| 8. <del>Thomas</del> <del>Wuksit</del> | 8. AJ curley *           |
| 9. Benji Smith                         | 9. Ann Russell Kaput *   |
| 10. Leah Gibbons                       | 10. Zaskia *             |
| 11. Shane Adams *                      | 11. Jason Panika *       |
| 12. Thomas Alooq *                     | 12. Sasha App, larjuk *  |
| 13. Erik Kaput *                       | 13. Suresh Namtan        |
| 14. Hester Hucyon *                    | 14. Aaron Ester *        |
| 15. Kathay malcran *                   | 15. Darrigan Pilakipsi * |
| 15. Evelyn Autul                       | 15. Jani Wuksit *        |
| 17. Israel Makter *                    | 17. Falsia Niakroki      |
| 18. C Amarek                           | 18.                      |
| 19. Nippi Wajuk *                      | 19.                      |
| 20. Sunika *                           | 20.                      |
| 21. Sharona *                          | 21.                      |
| 22. Dennis Kaput                       | 22.                      |
| 23. Darrig Makoolak *                  | 23.                      |
| 24. mason putnik *                     | 24.                      |
| 25. Meela Putulik *                    | 25.                      |

**Figure D.1-5-2 Sign-In Sheets Rankin Inlet**



**AREVA**

**Kivalliq Open Houses 2012**  
Sign In Sheet

Date Mar 6, 2012 1 of       

Location Rankin Inlet

Print Name

|     |                             |    |                           |
|-----|-----------------------------|----|---------------------------|
| 1.  | <u>Paul Delaney</u>         | 1. | <u>MARTHA KANAKOR</u>     |
| 2.  | <u>Tommy Beare</u>          | 2. | <u>Stephanie Fikseloo</u> |
| 3.  | <u>Gunner Thane</u>         | 3. | <u>Daley Thompson</u>     |
| 4.  | <u>Tommy Misherelek</u>     | 4. | <u>Freda Ayarap</u>       |
| 5.  | <u>Cecile Makler</u>        | 5. | <u>Sarah Lene</u>         |
| 6.  | <u>Krista Zawadzki</u>      | 6. | <u>Nicholas Thane</u>     |
| 7.  | <u>Erica Greene</u>         | 7. | <u>111 2000</u>           |
| 8.  | <u>Emilia Ramon</u>         |    |                           |
| 9.  | <u>BERNARD KANAKOR</u>      |    |                           |
| 10. | <u>and Elizabeth Makler</u> |    |                           |
| 11. | <u>Emily Thompson</u>       |    |                           |
| 12. | <u>Emily and Kanna</u>      |    |                           |
| 13. | <u>Violet Thompson</u>      |    |                           |
| 14. | <u>Angie Sukkut</u>         |    |                           |
| 15. | <u>Brian Kankalak</u>       |    |                           |
| 15. | <u>C. BIRUT</u>             |    |                           |
| 17. | <u>Sanika</u>               |    |                           |
| 18. | <u>Mila</u>                 |    |                           |
| 19. | <u>Duffy Thutit</u>         |    |                           |
| 20. | <u>Nathaniel Thutit</u>     |    |                           |
| 21. | <u>LUS MANA KIA</u>         |    |                           |
| 22. | <u>Kenneth Thompson</u>     |    |                           |
| 23. | <u>Talana Thompson</u>      |    |                           |
| 24. | <u>R. KANAYAK</u>           |    |                           |
| 25. | <u>Noella NUSAP</u>         |    |                           |

**AREVA Resources Canada Inc.**  
P.O. Box 9234 - 817 - 45° Street West - Saskatoon, SK S7N 5G5 - CANADA  
Tel: 1 (306) 343-4000 - Fax: 1 (306) 363-3883 - Web: www.areva.ca

Figure D.1-5-3 Sign-In Sheets Rankin Inlet



**AREVA**

**Kivalliq Open Houses 2012**  
Sign In Sheet

Date Nov 1 2012 1 of 1

Location Repulse Bay

Print Name

1. Leo Akkagoodjuk
2. Romeo Kajak
3. Gloria Katakra
4. Henry Simeonuk
5. Winnie Rose Simeonuk
6. Karl Angutluak
7. Paul Akkagoodjuk
8. Elizabeth Hagg
9. Paul Hagg
10. Albert Hagg
11. Robert Hagg
12. Daniel Mikaluk
13. Green Mikaluk
14. Terence Itkilik
15. Michael Akkagoodjuk
15. Angela Akkagoodjuk
17. \_\_\_\_\_
18. \_\_\_\_\_
19. \_\_\_\_\_
20. \_\_\_\_\_
21. \_\_\_\_\_
22. \_\_\_\_\_
23. \_\_\_\_\_
24. \_\_\_\_\_
25. \_\_\_\_\_

**Figure D.1-6 Sign-In Sheets Repulse Bay**

ADULTS

**AREVA**

**Kivalliq Open Houses 2012**  
Sign In Sheet

Date Nov 10 2012 of 1

Location Whale Cove

Print Name

1. Mary SammurtoK
2. Gerard Makkar
3. Charlene SammurtoK
4. Keanna Amiknaaq
5. Manu Nattar
6. Eva Sheetoqi
7. Sebastian Voisey
8. Augustine SammurtoK
9. Melanie Teerar
10. EVA VOISEY
11. DANIEL KRITERDLUK
12. Barb Enuapik
13. Roberta Enuapik
14. Allen Voisey
15. Don V
15. Simon Enuapik
17. Rita P. Nattar
18. MARY NANG MALIK
19. Greg M. Ioffok
20. Malaiyah Enuapik
21. Roberta Etigaitok
22. P Kwakak
23. Pamela ARUNIAN
24. Pam Aruak
25. ShuFly/George Nattar

Date Nov 10 2012

Location Whale Cove

Print Name

1. Bernard Jr Patulik
2. Martha N. Aruak
3. Martha A. Aruak
4. Stanley Aruak
- 5.

Figure D.1-6 Sign-In Sheets Whale Cove

## APPENDIX E PHOTOS

---



**Photo E-1 Open House at Baker Lake Open House**



**Photo E-2 Radiation Protection Demonstration Coral Harbour Open House**





**Photo E-3 Group discussion at Coral Harbour Open House**



**Photo E-4 Group discussion at Repulse Bay Open House**



**Photo E-5 Chesterfield Inlet Open House**



**Photo E-6 Chesterfield Inlet Open House**



**Photo E-7 Rankin Inlet Open House**



**Photo E-8 Group Discussion at Whale Cove Open House**