

Kiggavik Project Final Environmental Impact Statement

Tier 3 Technical Appendix 3A:
Public Engagement Documentation

Part 7 - Kivalliq Community Information
Sessions 2013

September 2014

Preface

Note of Thanks to Kivalliq Communities: This report summarizes what the Kiggavik Project team heard and learned in the Kivalliq Region during community information sessions. The team appreciated the willingness to share information and the way in which team members were welcomed in your communities. If you feel this report has not accurately recorded these events, please contact us.

▷ᄇᆞᆯLC▷ᄋᆞᆫ

[illegible]

English Summary

AREVA Resources Canada Inc. held Kiggavik Open House Information Sessions were held in the seven Kivalliq Communities in October and November 2012. The focus of the 2013 Information Sessions was the Draft Kiggavik Environmental Impact Statement (DEIS) and discussions on monitoring and mitigation. The open houses were advertised in the seven communities and letters of invitation were sent to Hamlets, HTOs, government departments and the Nunavut Impact Review Board.

In addition to the open houses, the AREVA team held meetings with Hamlet councils, HTOs and high schools.

A total of 271 people signed indicating they attended the open houses. AREVA staff recorded 225 comments made during discussions. The majority of the comments pertained to:

- Socioeconomics – 27%
- Project Description – 26%
- Human Environment – 11%
- Biophysical Environment -10%
- Nuclear and Radiation -9%

Ninety three participants completed comment forms indicating the majority of participants learned something new, had their questions answered and were satisfied with the project so far. The AREVA team was seen as the most interesting way to present information. Meetings, Open Houses and Public Meetings were stated as the best way for AREVA to communicate with communities.

Inuktitut Summary ᐃᓄᓐᓂᓐ ᓂᓄᓐᓂᓐ

[illegible]

$\Delta^c \subset \Gamma \triangleleft b^a \sigma^b \supset J \triangleright b^d \Delta^c \cap r^a \sigma^c \cap \omega^c$, $C^c \triangleleft \Delta \triangleleft r^a \otimes^b d^c \wedge^c \subset r^a \supset^b \Gamma^c$ $b \cap L^L \supset^b \Gamma^b \supset^b C^c \subset \triangleright^b \supset^c$ $H \triangleleft L \subset d^c$
 $b \cap L^L \supset^b \Gamma^b$, $\triangleleft^b j_{\mathcal{A}} r^b \cap^c b \cap L^L \supset^b \Gamma^b$ $\triangleleft L^L \supset$ $\supset^c r^a \sigma^b \supset^b \Gamma^c$ $\Delta^c \subset^a \sigma^c \triangleleft^c \sigma^b$.

[illegible]

- የጋሊፋጊ ለፍጥነት ለፎካል ስፔራል - 27% ነው
- ለፍጥነት ለፍጥነት ለፍጥነት - 26% ነው
- ለፍጥነት ለፍጥነት ለፍጥነት - 11% ነው
- የጋሊፋጊ ለፍጥነት ለፍጥነት ለፍጥነት - 10% ነው
- የጋሊፋጊ ለፍጥነት ለፍጥነት ለፍጥነት - 9% ነው

[illegible]

Copies of this report are available from the AREVA Baker Lake office, by request at 1-867-793-2000, and online at www.avevaresources.ca.

By:

AREVA Resources Canada Inc.

P.O. Box 9204

SASKATOON, SK.

S7K 3X5

Table of Contents

<u>SECTION</u>	<u>PAGE</u>
1 Introduction	1-1
2 Community Information Sessions	2-1
2.1 Notification	2-1
2.1.1 Newspaper	2-1
2.1.2 Radio Announcements	2-1
2.1.3 Posters and Invitations	2-1
2.2 Participation	2-1
2.3 Format	2-2
3 Community Feedback	3-1
3.1 Comment Forms	3-1
3.2 Questions and Comments	3-6
3.3 Monitoring and Mitigation	3-21
4 Next Steps	3-1

List of Tables

Table 2.1-1: Open House Locations & Dates	1-2
Table 2.1-2: Other Meetings & Dates	1-2
Table 2.2-1: Number of Participants Attending Open House Sessions	2-1
Table 3.2-1: Questions and Responses	3-7

List of Figures

Figure 3.1-1: Overall satisfaction with the project so far	3-2
Figure 3.2-2: Percentage of Participant Responses as the Most Interesting Way to Present Information at an Open House	3-3
Figure 3.2-2: Percentage of Participants Open House Comments	3-7

Attachments

Appendix A Notifications
Appendix B Information Material
Appendix C Sign-in Sheets
Appendix D Photographs

1 Introduction

AREVA Resources Canada Inc. (AREVA) submitted mine development applications and a project proposal to authorizing agencies on November 14, 2008 to initiate the Nunavut project review process on the Kiggavik Project. The Kiggavik Project is a proposed uranium mine (five deposits), a mill, and associated infrastructure located approximately 80 km west of the hamlet of Baker Lake in the Kivalliq region of Nunavut. The Kiggavik Project received a positive conformity determination about the Keewatin Regional Land Use Plan by the Nunavut Planning Commission (NPC) in January 2009. Two months later, the Nunavut Impact Review Board (NIRB) recommended a screening review to the Minister of Aboriginal Affairs and Northern Development Canada. In February 2010, the Minister announced a public review for the project under the Article 12 of the Nunavut Land Claims Agreement in Kiggavik activities.

Public participation is an essential component of AREVA's sustainable development model, and one of the five guiding principles used by the NIRB. AREVA and the Kiggavik team want to establish stakeholder relationships based on trust and transparency. AREVA recognizes a responsibility to people in the areas in which they operate, and is committed to the meaningful involvement of people in the Kivalliq area in Kiggavik Project activities. AREVA is committed to providing information on the project, and wants to hear what the people of the Kivalliq region and other interested persons think about the proposed Kiggavik Project.

AREVA began public participation initiatives for the Kiggavik project in 2005, two years before activities resumed on the site. They established relationships with stakeholder groups through meetings, and through tours of Saskatchewan uranium mines. Meetings continued in 2006, with an information office established in Baker Lake. A Community Liaison Officer was hired, and the Community Liaison Committee (CLC) formed. In 2007 public participation activities expanded to the other Kivalliq communities, with visits to each community and the establishment of a regional liaison committee (RLC). AREVA carried out five community information sessions in 2009, 2010 and 2012.

Community information sessions were held in six of the seven Kivalliq communities between November 13 and 21, 2013. The session in Coral Harbour was held on January 21, 2014. The schedule is detailed in Table 1-1. The sessions were conducted from approximately 3 pm to 9 pm.

In addition to the Open House sessions, AREVA representatives met with Hamlet representatives and Hunters and Trappers Organizations in most communities and with schools in each community.

The focus of the 2013 tour was the Draft Environmental Impact Statement (DEIS) and discussions on monitoring and mitigation.

Table 2.1-1: Open House Locations & Dates

Community	Type of meeting	Venue	Date	Attendance
Baker Lake	Open House	Qamanittuaq Recreation Centre	November 13, 2013	52
		Qamanittuaq Recreation Centre	November 14, 2013	50
Repulse Bay	Open House	Qitigvi Naujaani Community Hall	November 15, 2013	28
Chesterfield Inlet	Open House	Hamlet Community Hall	November 18, 2013	32
Whale Cove	Open House	John Adjuk Community Hall	November 19, 2013	46
Rankin Inlet	Open House	Singiituaq Community Hall	November 20, 2013	35
Arviat	Open House	John Ollie Complex	November, 21, 2013	13
Coral Harbour	Open House	Qaggvvik Hall	January 21, 2014	15
TOTAL				271

Table 2.1-2: Other Meetings & Dates

Community	Type of Meeting	Topic	Date
Baker Lake	Meeting with Mayor	Project Update	November 13, 2013
Baker Lake	School Visit	Meeting with High School students at Jonah Amitna'aq School – Mining cycle and environmental assessment process.	November 14, 2013
Repulse Bay	Council Meeting	Project Update Meeting and discussion.	November 15, 2013
Repulse Bay	School Visit	Meeting with High School students at Tusarvik School – mining cycle and environmental assessments.	November 15, 2013
Chesterfield Inlet	School Visit	Meeting with High School students at Victor Sammurtoq School - mining cycle and environmental assessment process	November 18, 2013
Chesterfield Inlet	HTO	Project Update Meeting and discussion.	November 18, 2013

Community	Type of Meeting	Topic	Date
Whale Cove	Council Meeting	Project Update Meeting and discussion.	November 19, 2013
Whale Cove	School Visit	Meeting with students at Inuglak School – mining cycle and environmental assessment process	November 19, 2013
Rankin Inlet	HTO	Project Update Meeting and discussion.	November 20, 2013
Rankin Inlet	School Visit	Meeting with High School students at Maani Ulujuk Illnniarvik School – mining cycles and environmental assessment process.	November 20, 2012
Coral Harbour	HTO	Project Update Meeting and discussion.	January 21, 2014
Coral Harbour	School Visit	Meeting with High School Students at Sakku School - mining cycle and environmental assessments.	January 21, 2014

The information sessions had several objectives:

- Introduce or re-introduce AREVA project team members to communities
- Provide updated information on the proposed Kiggavik Project
- Explain that the Kiggavik is working on submitting the Final Environmental Impact Statement (FEIS) and to answer questions about it.
- Discuss Monitoring and Mitigation.
- Relate the project to AREVA's Saskatchewan experience
- Learn more about important local values and concerns relating to the Kiggavik Project
- Encourage public input and participation

This report summarizes the results of the 2013 Kiggavik community information sessions in the Kivalliq region. The report includes public notification materials, information presented and made available, feedback received from the communities, and next steps.

2 Community Information Sessions

2.1 Notification

2.1.1 Newspaper

Kivalliq News: A print ad (Appendix A) was placed in Kivalliq News on November 6, 13 and 20 and in Nunatsiaq News on November 1, 8 and 15.

2.1.2 Radio Announcements

Bilingual radio announcements, based on the print ad, were aired by local radio stations, beginning a few days prior to the information sessions, and continuing until the day of the sessions.

2.1.3 Posters and Invitations

Posters, in the same format as the print ad, were displayed in advance of the information sessions at public locations in communities, including hamlet offices, government buildings, the Co-op, Northern Stores, convenience stores, office buildings and recreation centres.

Direct invitations were emailed to Hunters and Trappers Organizations and Mayors in the seven Kivalliq communities as well as government and Inuit Organizations.

2.2 Participation

A total of 271 participants were recorded as attending the seven open house sessions, although not all participants signed in. Table 2.2-1 shows the number of participants who were recorded attending each community information session.

Table 2.2-1 Number of Participants Attending Open House Sessions

Community	Date	Attendance
Arviat	November, 21, 2013	13
Baker Lake	November 13 & 14, 2013	102
Chesterfield Inlet	November 18, 2013	32
Coral Harbour	January 21, 2014	15

Community	Date	Attendance
Repulse Bay	November 15, 2013	28
Rankin Inlet	November 20, 2013	35
Whale Cove	November 19, 2013	46
TOTAL		271

2.3 Format

The main format was an open house concept, using display panel posters about the Kiggavik Project and the findings of the Draft Environmental Impact Statement. AREVA team members were available to answer questions, and to listen to and record any concerns. This allowed for one-on-one interaction between participants and AREVA representatives. One or two translators were available at each event, with simultaneous translation equipment available.

A project update and overview was given to the hamlet council in Repulse Bay, Chesterfield Inlet and Coral Harbour, and to senior hamlet staff and councillors in Whale Cove. Meetings were held with the Hunters and Trappers Organizations in Repulse Bay, Chesterfield Inlet, Rankin Inlet, and Coral Harbour and discussions were held with high school students in each community about the mining cycle and opportunities with each stage and about the environmental assessment process in Nunavut.

- The display panels used at the open houses provided information on the following topics:
 - Aquatics: Respecting Clean Water
 - Atmosphere: keeping the Air Clean
 - Marine: Ensuring Vibrant Life Underwater
 - Human Health: Protecting Workers and the Public
 - Socioeconomics: Providing jobs and Community Benefits
 - Terrestrial Effects: Promoting Respect for the Land
 - Terrestrial Wildlife: Co-existing with Healthy Wildlife
 - Cumulative Effects: Beyond our Project
 - Accidents: Safety is Our Top Priority
 - Sustainable Development: Thinking Long-term
 - Significance: Measuring What Matters

The AREVA team consisted of senior management, Regulatory Affairs, Community Relations, scientific people from the Safety, Health, Environment and Quality (SHEQ) Department, and Camp operations.

Once or twice at each open house, there was an open discussion on the DEIS, with emphasis on mitigation and monitoring to get community input on this topic.

Handout material available during the community information sessions included the Popular Summary of the DEIS in English and Inuktitut.

Some participants completed comment forms. A summary follows in Section 3.1.

3 Community Feedback

3.1 Comment Forms

Participants were invited to fill out a comment form before leaving the open house. A total of 93 participants completed the comment forms. Results are summarized below.

1. Did you learn something new about the Kiggavik Project?

Yes 81% (75)

No 11% (10)

No answer 8% (8)

2. How satisfied are you with this project so far?

(1 = Not satisfied 5 = Very Satisfied 6 = No Response)

Table 3.1-1 Satisfaction with the project so far, by community

	Baker Lake	Coral Harbour	Repulse Bay	Chesterfield Inlet	Rankin Inlet	Arviat	Whale Cove	TOTAL
1 Very Unsatisfied	6	0	0	0	0	0	3	9
2 Unsatisfied	3	1	0	0	1	0	0	5
3 Somewhat Satisfied	19	1	3	2	0	0	5	30
4 Satisfied	12	2	3	1	5	1	9	33
5 Very satisfied	3	0	2	0	1	1	5	12
6 No response	2	0	2	0	0	0	0	4
TOTAL RESPONDENTS	45	4	10	3	7	2	22	93

Kiggavik Project Satisfaction

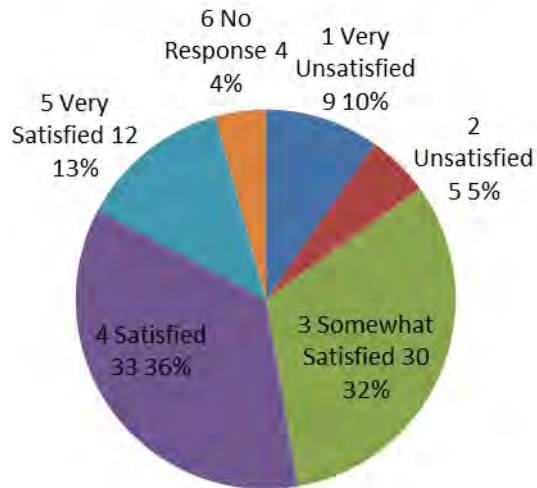


Figure 3.1-1: Overall satisfaction with the project so far

3. What was the most interesting part of the information session?

There were responses on 86 of the comments forms. Due to multiple selections by many respondents, there were 133 selections. Forty two percent chose talking to the ARVA team as the most important part of the information session. 18% enjoyed the public forum Q&A and 16% appreciated the poster and handouts.

Table 3.1-2 Participant Responses by Community Regarding Most Interesting Way to Present Information

	Arviat	Baker Lake	Chesterfield Inlet	Coral Harbour	Rankin Inlet	Repulse Bay	Whale Cove	TOTAL
AREVA team	2	20	3	4	2	9	15	55
Posters and Handouts	0	12	0	1	5	3	15	36
Public Q&A	0	18	1	1	1	3	11	35
No response	0	5	0	0	1	0	1	7
TOTAL RESPONDENTS	2	55	4	6	9	15	42	133

Most Interesting Part of Open House

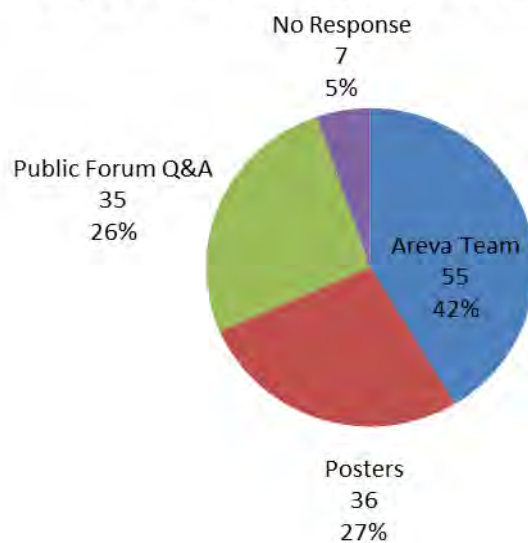


Figure 3.2-2: Percentage of Participant Responses as the Most Interesting Way to Present Information at an Open House

4. Did we answer all of your questions?

85 respondents answered this question.

Yes 68 (80%)

No 17 (20%)

No answer 8 (9%)

5. If you answered no, what questions would you like answered?

16 respondents answered this question. The responses are listed below.

- How if you open the uranium mine. What is the life span.
- About the radiation.
- Didn't ask all the questions or information.
- What would Baker Lake benefit from Areva?
- Why is it that the Liaison Officer for Baker Lake never lets us know what's going on?
Only when you guys come in.
- How safe is Uranium?
- Can there be funding deposited to our bank account in Baker Lake to protect our future?
How much closer is the mine going to get from the community?
- A lot of unanswered questions.
- Are we getting something out of it.
- I don't know
- Issues regarding animals.
- I like the information given
- I am OK with it.
- More environment
- Any questions
- I think the information is quite accurate for me to understand, thank you.

6. What would you like to receive more information on?

Only yes responses recorded.

Table 3.1-3: Participant responses to what they would like to receive more information on

Topic	Arviat	Baker Lake	Chesterfield Inlet	Coral Harbour	Rankin Inlet	Repulse Bay	Whale Cove	TOTAL
Radiation Protection	2	31	3	2	4	9	20	71
Uranium Mining	2	29	3	4	3	8	19	68
Regulatory Process	0	29	1	2	3	10	16	61
Monitoring	0	28	1	2	4	7	18	60
Environmental Protection	0	36	1	3	4	9	19	72
Economic Opportunities	0	32	1	2	3	9	20	67
Other	0	12	0	0	2	5	8	27

Requests for other information:

- Would like the regulations followed
- Training opportunities
- Due to climate change, what are the effects on the seasons?
- Climate concerns, healthwise towards the future. Also toward our wildlife concerns of migrations
- Economic, infrastructure, training, employment, socio-economic impacts.
- We want to know if there is a program for grants with people who have cancer
- The answers we get are clear
- Are there more lakes up there, and rivers
- More pollution protection
- Information about health effects on uranium
- Good
- Basic Project Details – size, lifespan etc.
- I did not understand mitigation but was given proper translation, thank you.

7. How would you like AREVA to communicate with you?

- Hold a radio show in Baker Lake.
- Meetings with local community.
- Make announcements and updates on local radio.
- Open House meetings.

- Open Houses, public meetings and radio shows.
- Areva should make more frequent visits.
- In-person meetings at Open Houses.
- Open Houses, local radio show.
- Courses.
- Meet with the schools, elders and public meetings.
- Handouts and Open Houses.
- Hands-on approach at meetings.
- Open House meetings and handouts.
- Need more consultation with sub-committees; Areva will have to follow our regulations too.
- Make presentations and use computers.
- More meetings with our communities.
- Involve the elders more.
- Open houses. (12 comments)
- More info on radio shows.
- Provide updates online.
- Open Houses and meetings with your group.
- Open Houses, handouts and blog.
- Meetings with local Council.

3.2 Questions and Comments

These 225 comments were recorded one-on-one by members of the AREVA team in conversation with open house attendees. The majority of comments pertained to Socio-economics, Project Description, Biophysical and Human environments and Nuclear and Uranium.

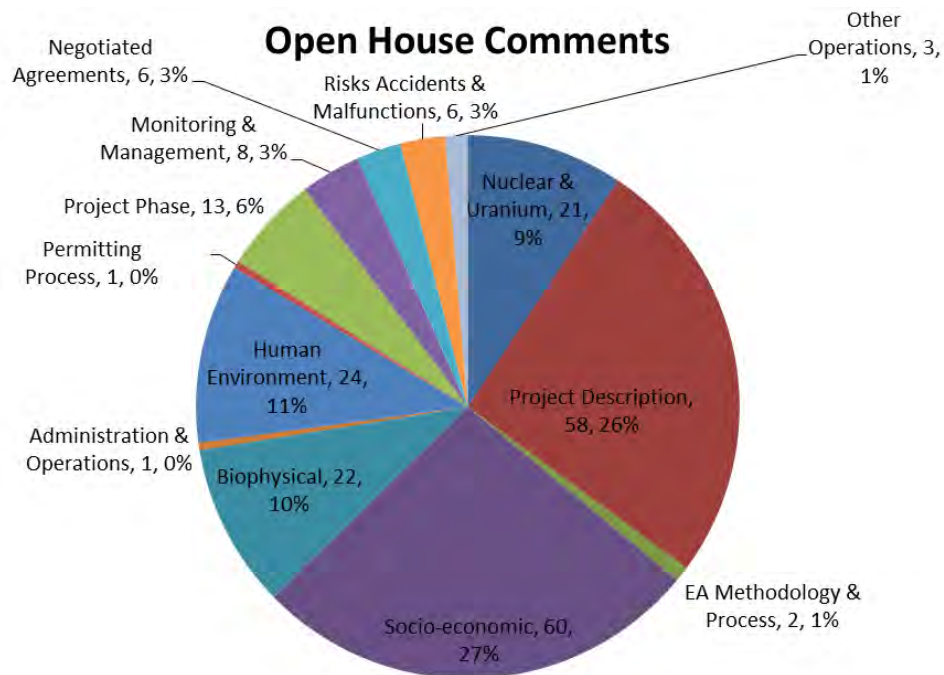


Figure 3.2-2: Percentage of Participants Open House Comments

Table 3.2-1: Questions and Responses

Nuclear & Uranium (21 Comments)	
Are there any other uses for uranium besides energy? (Medical?)	
What's new in uranium technology?	
Concerned about radiation. Are people afraid because they don't have enough information?	Yes and Kristine did a demonstration using the radiation safety kit.
Suggest having demonstrations on nuclear reactors to show how uranium is processed to make energy in nuclear reactors. How ds nuclear reactors work.	Suggestion noted.
What are the advantage of using uranium (nuclear) energy in comparison to diesel. We use diesel here. Information would be useful.	

What is uranium used for? Why are you mining it? Is it a liquid or solid? What is nuclear power?	
I was wondering what uranium is and what it is for and now I know and I feel better.	
I have heard uranium is the cleanest type of mine but I just don't know, I don't know about the mine.	
What is uranium and what is it used for?	It is a naturally radioactive element used to produce energy in power plants.
Where would it go to?	Canada, US, France and then to make fuel and to a power plant somewhere in the world.
What is the uranium?	Heavy metal used to make fuel pellets for nuclear power.
Radiation of underground workers vs open pit?	Miners only wear coveralls.
Is the material used for nuclear weapons? How do you know it isn't	
Will uranium be used for nuclear bombs?	
What is uranium used for? What is the isotope that is used?	
What is the reason for mining uranium? Is AREVA reselling the Uranium? Who are they selling it to? What is the reason for selling uranium?	
What is uranium used for? Is it still used in weapons?	
Who uses that energy?	
Does AREVA have nuclear reactors in Nunavut? Will we be proposing one?	
Isn't it more profitable for the company to have a reactor and do the refining?	
How will uranium be contained?	Stainless drums with locking lids prob in shipping container.
Project Description (58 Comments)	
Any other options except building a road?	No, we need a road.
Fuel Storage in Baker Lake?	Yes, because hauling fuel only when winter road is open.
No alternative power yet except fuel?	Not yet. Maybe hydro would be an option a long ways into the future.
Any roads there now?	No, access by helicopter.
What about those pipelines. They look like a long distance on the map.	At least 10 km.
What about sewage and landfill?	yes, Kiggavik will have both a landfill and incinerator as well as

	a sewage treatment plant.
What kind of bridge?	The bridge would be cable ferry crossing and ice bridge. We don't need a bridge all year round. It would be expensive to build a permanent bridge.
What's the production life?	12 years currently but exploration is still ongoing.
Will you build a bridge for the road to Kiggavik site? Will a winter road be enough?	We plan to use a winter road to start. If we need to use an all year road.
How deep are the pits? Do you fill the pits back in?	
Where is the dock site? Will you consider using the AEM site?	
What is in tailings?	
Why do you want a winter road?	
Where would a bridge cross the Thelon?	
The cable ferry would be cool. I have been across one in the south.	
We have heard that uranium mining has never been done where it is minus 40 degrees and this is worrisome. How will you deal with this?	
Road management is extremely important for safety and safety shelters too.	
Is it possible for you to mine the uranium ore and then transport it to SK for processing? People don't want you to build all those buildings.	
Will the town get support from AREVA for a better runway? Will you have a runway at the site? For jets? Better than Baker Lake?	The mine site runway will support jets because we will fly out the product.
How will the milling process work?	Explained circuits and process.
What kind of bridge over the Thelon. Why choose that kind (cable ferry)?	Cable ferry because the most feasible. We don't have to build an expensive bridge and then tear it down. The cable ferry is less impact.
How deep is it?	About 150 metres for the pits.
Road Options. Winter/summer? Type of bridge?	cable ferry and ice bridge winter road
What kind of bridge over the river? I'm sure the residents would like a bridge.	Cable ferry and ice bridge.
How many hours drive from Baker Lake	About 2 hours.
What about spring water. How will water run?	Discuss ditch to drain water.
How will the land be decommissioned? Revegetated? Refer to Suzanne Campeau, a Bryophytotoxocologist in Quebec. Research on reestablishment of mosses etc.	Showed and explained process at Cluff Lake. Took note of reference.

Why can't you use the Qikiqtarjuaik River?	Too narrow and rapids.
What kind of bridge over the river? I'm sure the residents would like a bridge.	Cable ferry and ice bridge.
Road Options. Winter/summer? Type of bridge?	cable ferry and ice bridge winter road.
How big is the footprint?	
Instead of barging, you should build a road from Chesterfield to Baker Lake unload at Chester and then truck it. Use a winter road from Chester to Baker. Fly it to your site.	
How many pounds of uranium are you going to mine?	
What about the waste? Lots of animals eat plastic (ingest plastics)	Incinerator and landfill on site.
Where are you doing the lightering because the ships are too large to go into the Narrows.	
How would you ship product? Where to?	
How do you drill under the lake? Will the water drain from the lake? Will the uranium come up from under the lake?	Plugging holes after drilling. Explained drill core.
How much shipped out?	270-355 shipped of 20,000 Kg
Any underground mine? How deep? How long does it take truck to get up?	yes, one with decline 500 m 3-5 min down and 5-10 up & 17 km to get from Scissons.
How deep is mine?	550 lower level
How long will you be there?	3 construction, 12 operating, 3-5 decommissioning
How do you decide about where to put the roads? What happens when the mine is done with the tailings? Main interest was looking at maps of road and site.	10 minutes on before, during after poster and on Cluff lake photos of decommissioning. Explained previous road, workshops and influence of community on road choices. Discussed archaeology studies and surveys in future.
Winter road. Will it be travelled on by big trucks?	
Will there be a big hill left after mining?	The hill will be left and resloped.
What will happen to the cabins that are on the site right now?	There will be a new camp built. The old one will no longer exist underneath WR pile.
That mine will be huge, really big on the land.	
I know the current overland winter route that is similar to your winter road and I think it would be much better to cross BL earlier and then across the Thom Lake. This is a shorter and better route.	

What chemicals are you using and are they different than Meadowbank?	
What type of vehicles will be used on the winter road? Will you have tailings pond and will it be fenced?	Safety berm but likely no fence.
Chemicals in tailings can be contaminant. Where does the waste water go?	All tailings with chemicals go in pit. Water that is used is treated.
Two questions from young male. Road options on how material and workers would get to and from the site.	Explained on the road option map the current and preferred options. Pointed out the location of the pointer Lake runway and that the plan is all workers will be flown from home base to the work site and returned from worksite to home.
How will you control dust on the road and at the mine site?	
I prefer the all-season road option. Caribou cross all over the Meadowbank road and you should probably talk to AEM about the road slopes that they have and consider what has worked for caribou crossing. Will the HTO manage the road?	
Where is this project?	
What are you mining for?	
We have lime. Can you use it at all to process or purify the uranium? We have trillions and trillions of tons of it.	
Will there be roads? Roads should be built after nesting.	
Do you fill the holes (pits) back in?	
EA Methodology & Process (2 comments)	
Did you measure the background radiation in Baker lake before you started?	Yes, we measured background radiation before so we know our impact.
I do not have much more to say but when NIRB comes we can take the discussion further. When you get further the big leaders will be coming to the community from NTI, KIA and others.	
Socio-Economic (60 Comments)	
How many people will be employed?	300-600 employees
What's the support of the all season road vs winter road in Baker Lake?	Baker Lake had concerns regarding dust from experience with Meadowbank road. Used to have more support for all season road but now we see more support for the winter road because of the dust and perception that the road will drive caribou away.
Have people from Baker Lake have problem of route selected.	Yes, some have commented.
AREVA worked on project since 2006. When will AREVA really	

try to figure out what people in BL really think about the project? People are losing interests. These open houses go on every year. Talking about the people of Baker Lake, when will AREVA find out what they think?	
Have you talked to Baker Lake people? Any concerns with caribou?	Yes, we talk with Baker Lake people.
The channel between Chesterfield and Baker is where I am worried about effects. A lot of businesses will support the going ahead of AREVA but many local people will remain unemployed (including those unable to work and many do not have the needed education. Today I hear that you need to have grade 12 and before as long as you know what you are doing. You could get a job.	
I was a heavy haul truck operator at MeadowBank and had to resign due to harassment from others, harassment from other tribes. Nunavut has many tribes. I am a woman and had to train men operators and sometimes was harassed. Advice to AREVA would be to have good trainers and that they should be trained on how to train Inuit with respect.	
Heard that it will affect our wildlife and our land so I am against uranium mining.	
What do you think about people's concerns? Late husband worked underground. She believes underground is safe.	
What kind of jobs?	various, heavy equipment, all trades
Are you going to be having any drilling assistants? I finished a drilling program here.	Yes, there will be drilling jobs
Any jobs?	Project to be developed at a minimum 5 years if approved.
If it could open, I would try to apply to work at Kiggavik. Currently working at Meadowbank.	
Are you hiring Inuit workers because Meadowbank said they would and now they are hiring non-Inuit.	Yes, we will be trying to hire as many from the communities as we can.
What's the rotation? I find two weeks too long at Meadowbank. Bored after work.	Most likely 2 weeks
I'm looking forward to change in mining.	
Will there be training? Where will training take place?	Yes and will start after development decision. Classroom and some at mine site.
Is there training required?	Yes, about half of jobs require on the job training and the rest require diplomas, trades or degrees.
Wasn't educated at all but was trying to help out. Adjusted to the work force. Maintained airport of the site. Learnt by watching.	

In the old days, no education was needed but it's needed today. Some young people are jobless even though they have some education.	
Those who don't have completed education can learn by watching work. For ladies too	
Don't know who to talk to sometimes in Baker Lake	Can bring up at CLC meeting
Expressed concern about working 12 hour days. Concerned about having time off for funerals. Concerned with Speaking Inuktitut (Agnico)	We will work with employees.
Many elders passed. What grandparents have said to them is always with them. Parents taught them how to have a good life but today young people attached to other things. Young people don't remember how life used to be.	
I work for Agnico as a dishwasher but I don't trust them anymore. I only work part time now on call out. Everything they said has changed.	
Did the Aboriginals complete education to get jobs at Cluff Lake?	With time. Now need grade 12 or experience.
Will you have the same jobs available as Meadowbank?	
We are scared of this mine or any mine because we have experience with a mine near here and there were not enough rules and promises were not kept.	
I'd be interested in jobs. Been looking for a while.	
Concern about grade 12. I have experience but got kicked out of school because I had to go fishing with my Uncle.	We want people to have their grade 12 however we will look at mature candidates who have experience.
Would you have country food there?	Aboriginals can hunt there and the site would be equipped to store country food.
I worked in Meadowbank as a haul truck driver. Worked contract. They said it will transfer to another job when contract finished but that didn't happen. I stopped calling. Is that going to happen at AREVA?	AREVA will have a lot of training. We will go to every Kivalliq community when looking for employees.
How many staff? How many will be Inuit?	400-600 and up to 750 for construction. We will try to achieve 50-68% Inuit with training.
If you put it on Facebook people will know.	

What about a training facility in Chester?	It has to be feasible.
When you met with Hamlet and HTO did you about the older people able to get jobs without grade 12 but with experience.	In response to youth needing grade 12 but equivalency considered for older adults.
We elect the Hamlet and HTO and they need to work on our behalf representing us.	
I support you going to communities and also to meet with Hamlet Councils and HTOs.	
The closer communities will likely have the most issues but the other communities might have issues too.	
If AREVA goes ahead with the mine what training will be available for this community for employment.	
This is discouraging to know the approval takes so long and the jobs and opportunities are far away.	
The Elders want to keep living a traditional lifestyle but us younger people want to see economic development.	
Homeland visits. Who do we talk to about getting our family a visit? We have asked before but we seem to run into red tape.	Sally noted that both Barry and Dan have talked to her father.
When will the mine start? Will the elders be able to get jobs?	
I think AREVA has been good to share lots of information at open houses	
If you want to give the community money and jobs like Meadowbank we will support you.	
Are we going to have a vote too because it is our future?	Welcome to give us feedback.
Hiring priority? Does it go to BL first?	AREVA commitment is to give preference to Kivalliq communities but could be negotiated as part of IIBA.
I have been laid off from the other mine and I am looking for work. I am a haul truck driver, do you have a job for me?	
There has been some opposition to this Project, what kind of work have you done to better inform people of the real dangers?	
What do you have for training programs? There has been some success at Ekati doing high school completion on site and I think this is a good model.	
I think it is important for employees to be patient and train with one company to realize progression at work.	

You should be talking to elders instead of me. Are you talking to the elders too sick to attend meetings?	
I am from Rankin Inlet. Will there be jobs for people from Rankin too? How many jobs will be available? Will the plane pick up people from Rankin?	
What type of work shift would AREVA implement if Kiggavik started up. In particular would it be 1 or 2 weeks.	Those discussions would get looked at closer to going ahead with planning of production. There would be regulations and labor permits issued after approval for the implemented shift. Explained at Kiggavik our permit is set for 2 weeks in and 2 weeks out for AREVA personnel. WCB allows contractors to work a maximum of 6 weeks in and mandatory 2 weeks out. We encourage contractors to work 4 in and 2 out. Currently at Kiggavik, the local residents work 1 week in 1 out. In Sk. we work 1 in and 1 out.
Do you take resumes here or do I send it somewhere else?	
People don't come out to these events unless there is a prize or a money giveaway. It would be good if people came to these events and learned about the projects in the region. It would be good to go on the radio and tell people about the project and maybe have a call-in show.	
There are little opportunities for employment here. Some people would maybe get jobs if an exploration company built a mine on South Hampton Island.	
Well, I hear about projects and I really hope one pops up. There is too much unemployment here.	
AREVA should consider talking about the project on the radio. Community mentors could call in and ask questions. Radio would be a good way of communicating with community mentors.	
Biophysical (22 Comments)	
What about the environment? How do you know what is in the air and water and lichen that caribou eat?	
What about the environment? How do you know what is in the air and water and lichen that caribou eat?	
I'm against it because of the impacts on the wildlife roads and things there are accidents	
I don't really know anything about mines. How do you find the uranium? Why is the pit so deep? What if there is a caribou herd nearby? How do you guys know there won't be an effect?	
Your mine is near a wolf denning area and too close to the	

sanctuary where there is already a mine.	
Will you fence the site to help wildlife out?	
Would wildlife get contaminated eating near site?	
Would dust control be for camp or also for site?	For when we generate dust but mostly on site
What about ballast water and pollution? We need to protect the waters and the project will affect these things.	There are laws on ballast water and shipping that we are required to follow.
There is all of this shipping and no one protecting the inlet.	
What about the dust. Lots of wind and can carry dust.	
Dust-wind can carry far.	We monitor.
If AREVA opens, my concern is that the water released will travel to Baker Lake and the dust in the air will affect the animals and the people.	
The dust will be an issue because there is constant wind that will lift the dust and keep it suspended.	
Are there fish in lakes	yes and water quality guidelines must be met
What will your impact be in the area of the mine site on caribou?	zone of influence, noise and vibration, road impact.
Trust AREVA but concerned about animals eating contaminants	
Haul truck driver at Meadowbank was saying the dust is an extreme problem at Meadowbank and they can't do anything about it. Summer is ok as they water it down but in the winter it freezes and gets very slippery so they have to stop. It was worse at the site and crusher area.	Hopeful for the winter road to service the site and there should not be the same problem for that portion of the project. We will try to mitigate and control as best we can at site and are working with AEM to understand the effects of dust on the tundra.
We travel to Schultz Lake often to hunt there. The level of the Thelon has been lower and I am not sure but this may be because of Climate Change.	
How long will the uranium be in the atmosphere?	
Dust from road. What will AREVA do to suppress dust? Agnico Eagle said it would stop transport when the caribou herd is nearby but they don't. Will AREVA do the same?	start with winter road. AREVA will monitor dust impacts on plants and animals. Hard to predict what we will do. Wildlife mitigation plan will be in place. Look at our performance now.
Will road affect the animals?	Part of the assessment is what contaminants get in the environment. Caribou eating lichen, we sample the lichen.
Administration & Operations (1 Comment)	
Is the company Canadian? I think it is important for people to know who owns these companies. What country is Agnico from and Baffinland too?	

Human Environment (24 Comments)	
We are concerned that this will affect the hunting since Meadowbank started Caribou hunting has been hard.	Asked how hunting was before.
Radiation exposure to worker. How do we keep people safe?	
We travel between Long and Siamese lakes and are disappointed to find garbage there from companies. There is even a tire there.	
Are there fish in the lakes? Will they be safe? Can you drink the water?	
That water you will use will become contaminated and come to this community and we will get sick. Will you pay us for the water you use. I can go on and on about reasons why not to support this project.	
The caribou are far from here now and there are too many wolves around. We have to travel far with tents to camp to get caribou.	
Are the people of SK eating the animals around Cluff? Is it safe?	Yes, it has always been safe.
Elder remembers hunters going out for caribou and sea mammals and remembers that they tasted better. Now they have changed because of the ship traffic and mining. Now they have to check the animals for disease like trypanosomiasis. Ever since mining companies started there has been a change. As a child she never heard about cancer.	
We are seeing reduced numbers of harp seal, ring seal and Beluga in the Chesterfield bay. We now have to travel farther to hunt and fish towards Repulse. We have to travel far there and it is more dangerous.	
Did you check to see if there are grave sites between the mine and mill?	Yes, we have mapped this extensively.
Will the mine be toxic?	
I don't think it was ever answered what if any restrictions to cross the Thelon?	We are looking at all the requirements. It's a cable ferry/ice bridge crossing.
Do they wear masks in pit on hot sunny days?	No, not required.
Is it safer than coal?	Not sure. Modern mining are generally safe work places.
About 20 years ago I heard of uranium miners getting cancer? Will that happen here? People will be afraid because they have heard causes cancer.	Uranium miners since the 1950s are as healthy as other Canadians. In the 30s did little protection from radiation and some got cancer.
Against mining all over mines. I eat country food and against tailings carcinogens	Gave 3 handouts and shared Human Health Assessment

I hunt in the area including around the north of BL and off the road. We either get a pass from the HTO or we show our NTI Beneficiary card	
Health and Safety needs to be something that is important to a company and coming from the top down or it is very hard to make a safe site.	
We hunt a lot near town and mostly north now but maybe if a road was built we would hunt on that area. I like the all-season road because it would be safer. The road is a good thing for those with limited machinery because it allows them to go out and hunt. There are new hunters and they need time to learn. The ways to hunt to be safe. The HTO permits seem to work well.	
We go wolf hunting in the Siamese and skinny Lakes area. We travel the route along the proposed Kiggavik winter road often to hunt. Most concerned about caribou movement between long and skinny lake. We believe the road will make the caribou turn around. There is a caribou migration west of Anigguq and north across Audra Lake.	
We hunt everywhere. My husband was born on the land and uses the whole area around BL. We have taught our sons to use the land this way as well.	
Radiation. How do you know what reading is dangerous? What if you go over? Does it take long to get sample back?	We set safe limits. Keep people away. Distance and shielding. Reading on sometimes immediate.
Do people get a serial #	Name printed on each OLD. People get results too.
You check people at camp. What about environment?	We can monitor every point. We can sample air, soil.
Permitting Process (1 comment)	
Mine inspections. Difficult access for inspectors up north. Down south the mines have roads and big centers to get to and from. They won't happen enough up here.	Mentioned that as part of the license and permitting process mines inspectors are required and regulated to make the appropriate inspections. Even during or early stages of operation since 2007 we have inspections minimum one sometimes twice a field season.
Project Phase (13 comments)	
The one decommissioned mine in SK. What kind was it?	Uranium open pit and underground similar to Kiggavik.
When will you open this mine?	
When will the mine open?	
What is the life span of the project?	
Is the mine open now?	

Life of mine. How many years?	approximately 20 years
Are you looking for gold?	
Did it start in the 80s? How did they find it?	Discovered in 1975. Found with airborne radiation survey.
What do they look for (exploration)?	
When will it open? I want to be a miner.	Heavy Equipment Op.
I think decommissioning in the arctic will take a long time. It will take a long time for the vegetation to grow.	
I like the decommissioning and I like the pits being filled up more than the pit that would be a lake. What does Baker Lake think about that? It might be ok but I think a lake is a bigger change.	
When will the mine start?	
Monitoring and Management (8 comments)	
Wildlife protection monitoring. Should be more than one monitor on site.	We should have more wildlife monitors.
Do you test the water in the ponds onsite?	
Want AREVA to go slowly at first so that we are sure that we aren't harming the animals. I.e. Must monitor situation as we progress. How do we make sure the animals are ok? Hunts geese and makes money selling them to HTO for medicinal purposes.	Explained environmental monitoring and how the ecosystem is monitored by looking at water, air, plants, and animals so we understand potential impacts on caribou, muskox, wolverine etc. Would not need to travel far to get geese. Wouldn't travel to Kiggavik.
How will monitoring be done? It should be not only at the mine site but also along the road. Will it be near the site or up to a few km away that you will monitor?	
I need details on how land and animals are going to be monitored.	
Will the HTO be hired to do the monitoring? Will local people be hired for that work or will it be others? I think you should hire local people for monitoring?	
Wants details of how land will be monitored-consultants, HTO? What group?	
How long do you monitor after decommissioning?	Until we can demonstrate can walk away after leaving 5 years.
Negotiated Agreements (6 comments)	
Do the royalties go to NTI or to Baker Lake? I understand that the royalties need to be shared with all of us and wonder what Baker will get because they are the closest community.	
Where are NTI and KIA and why are they not here? Where	

are they? How is this money spent, who decides? They have money and we have no control.	
Economic benefit? Royalties?	
How will this project benefit the community? The IIBA is between the KIA and AREVA, but what about the community? What investments will you make for training here? You are mining and making money and what do we get?	
I do not think there are any Baker people on the Kiggavik IIBA. It is important for the IIBA to be done well.	
What are the land ownerships and what does this mean?	
Risks, Accidents, Malfunctions (6 comments)	
Were there any accidents?	Yes, record very good but some accidents and accidental deaths.
The open pit driving is a bit scary when the weather is bad and the road is slippery.	
What are the safety risks in uranium mining? Do accidents increase with colder temperatures?	Yes, same as it would with other industries. People pay less attention when it's cold.
I think it will be important to have safety shelters and accommodations at your other site (Sissons) for our winter weather.	
A lot of accidents on Meadowbank road. Hire Inuit operators to maintain road as they are used to driving on winter roads compared to southerners.	
We want the inlet protected. Seacans from Transport Canada put by the Northern 3 years ago. Key with RCMP. No one here knows how to use it. If they plan to fly trained people in when there is an emergency, it will be too late. We have asked for this so many times all the way back to the start of Meadowbank but nothing.	
Other Operations (3 Comments)	
Where is uranium mined?	SK, Canada, Kazakstan, Niger
Are the other uranium mines similar to the one you propose here?	Same as in SK and Africa is similar to Kiggavik.
Is this Meadowbank? Are you the same company?	

3.3 Monitoring and Mitigation

Monitoring and mitigation was a specific topic for community input during the 2013 Kivalliq Open Houses. A handout shown in Appendix B was used to guide the discussion. Some of the mitigation measures that could be used to minimize effects on the environment were explained, and people were asked for their suggestions on monitoring and mitigation measure.

Specific questions asked were as follows. Written responses are recorded in italics following the question:

What mitigation measures or monitoring do you think AREVA should consider when we are constructing the facility, operating the mine, shipping supplies, building a road, building stream crossings that would prevent or reduce efforts on the environment?

- Whatever works for you guys.
- Operating the mine, shipping supplies.
- All the above.
- The site should be totally fenced to avoid animals to mine site.
- All the above.
- Monitoring the environment for possible radiation in the soil or food chain.
- Caribou migration and calving should not be disturbed, soil and water not to be harmed.
- Please respect wildlife, keep the lakes clean.
- I wouldn't want the migration routes to be ruined and the lakes that have fish

What mitigations or monitoring can AREVA do to reduce any possible project effects on caribou migration?

- Minimize the size of footprint.
- Stay as far away as possible from the herd.
- Migration season should be monitored, take advice from elders and hunters accordingly.
- Take care of wildlife.
- Try to monitor the migration routes.
- Caribou migration route and calving grounds not to be disturbed
- Please don't disturb fish in the lakes, caribou routes, migration routes and stay out of their way.
- Work around the migration routes and leave the fishing lakes done.

How in your opinion can IQ be considered in mitigation and monitoring plans?

- Community consultation and the gathering of local IQ.

- Should be considered a priority.
- I would appreciate if caribou migration routes would not be disturbed. These are our diet up north.
- IQ should be used for wildlife.
- All these years Inuit has lived in the north, they have knowledge of everything about landscape, animal migrations and basic knowledge.
- Make sure our elders are kept informed.
- Get more information about the land and how it will impact the people and hunting areas.

4 Next Steps

Public participation and information sharing is an ongoing process, and AREVA will continue to hold liaison committee meetings, workshops, public information sessions and presentations to community councils, HTOs and other interested groups. Project information is always available from the Baker Lake AREVA office, the AREVA website, and public registries.

CLC members are appointed by the committees they represent. The CLC meets about four to six times a year. Workshops and information sessions will continue in the various communities as required, to discuss project studies and results.

AREVA representatives will continue to visit communities in the Kivalliq region to provide project information, elicit comments, and listen to concerns from the people of the region

Appendix A Notifications

1. Invitations

Letters of invitation were sent to mayors and Hunter and Trapper Organizations (HTOs) in each community, as well as to the Kivalliq Inuit Association (KIA), the Nunavut Impact Review Board (NIRB), the Canadian Nuclear Safety Commission (CNSC), and Aboriginal Affairs and Northern Development Canada (AANDC).

The following is a list of the invitation letters that were sent.

Hunters and Trappers Organizations (HTOs)

- Arviat: Mr. Alex Ishalook, Chair; Ms. Leah Muckpah, Manager
- Baker Lake: Mr. Hugh Ikoe, Chair; Ms. Joan Scottie, Manager
- Chesterfield Inlet: Mr. Barney Aggark, Chair; Ms. Mary-Ann Issaluk, Manager.
- Coral Harbour: Mr. Noah Kadlak, Chair; Ms. Louisa Kadluk, Manager
- Rankin Inlet: Mr. Jack Kabvitok, Chair; Mr. Norman Ford, Manager
- Repulse Bay: Mr. Michel Akkuardjuk, Chair; Ms. May-Lain Suisangnark, Manager
- Whale Cove: Mr. Stanley Adjuk, Chair; Ms. Lisa Jones, Manager.

Mayors and Hamlets

- Arviat: Mayor Bob Leonard
- Baker Lake: Mayor Joe Aupaluktuk
- Chesterfield Inlet: Mayor Harry Aggark
- Coral Harbour: Mayor Dorothy Ningeocheak
- Rankin Inlet: Mayor Robert Janes
- Repulse Bay: Mayor Hugh Haqpi
- Whale Cove: Mayor Stanley Adjuk Sr.

Government Organizations

Aboriginal Affairs and Northern Development Canada (AANDC): Ms. Karen Costello, Acting Director, Resource Management; Ms. Margaux Brisco, Manager, Environment.

Canadian Nuclear Safety Commission (CNSC): Mr. Denis Schryer, Project Officer; Mr. Jean LeClair, Director, Uranium Mines and Mills Division.

Nunavut Impact review Board (NIRB): Ms. Sophia Granchinho, Technical Advisor; Ms. Amanda Hanson, Director Technical Services

Government of Nunavut: Mr. Pauloosie Suvega, ADM Economic Development & Transportation; Mr. Jean Daniel Blouin, Project Manager, Environmental & Human Health Impact Assessment; Mr. Christopher Down, Senior Advisor-Energy Policy Economic Development and Transportatin.

Kivalliq Inuit Association (KIA): Mr. Luis Manzo, Director of Lands; Ms. Lisa Oolooyuk, Communications & Community Program Officer; Ms. Veronica Tattuinee, Lands Administrator.

2. Print Media

[illegible]

Figure A.1: Kivalliq News/ Nunatsiag News Advertisement/Poster

This advertisement/poster was placed on three occasions in each of Kivalliq News and Nunatsiaq News. It was also posted prominently in several locations in each community.

3. Radio Announcements

The poster was also used as the basis for announcements on local radio in each of the seven communities.

Appendix B Information Material


KIGGAVIK PROJECT

Aquatics: Respecting Clean Water

Clean water is essential to all of us and we will endeavour to protect it

AREVA assessed the potential aquatic effects of the Kiggavik Project on ground and surface water, water and sediment quality, as well as fish and other aquatic organisms, populations and habitat in the local and wider area. The potential effects include dewatering activities, use of freshwater for construction, mining and milling operations, process water treatment and discharge, as well as construction of dykes, berms and collection ponds.

AREVA is committed to protect the aquatic environment

Our assessment demonstrates that the effects of the Kiggavik Project on the local aquatic environment will be low in terms of water and sediment quality, aquatic organisms and fish populations and habitat. The effects on surface and ground water will be higher but limited to the Project's operating period.

To have the least effect on ground and surface water, AREVA will

- Implement a water management system based on minimal water usage and discharge, as well as recycling, while making use of natural drainage.
- Design the site to ensure the smallest footprint possible, while ensuring that the tailings (process waste) management system avoids interaction between the tailings and natural water bodies.
- Ensure that the site water supply will be sourced from and discharged to large water bodies, and that the treated water released will meet or exceed the highest water quality standards.

The results of AREVA's assessment indicate that

- Draining part of Andrew Lake will cause some fish habitat destruction that will be replaced.
- The Project will use water from Siamese Lake and Mushroom Lake.
- Some elevated levels of copper, cadmium and selenium may occur in Judge Sassons Lake, but residual effects are not predicted as significant.

IQ Influence: Local observations on climate change and its possible influence on permafrost and ground water influenced aquatics studies, which considered water movement in a variety of climate change scenarios, including a decommissioned mine in a no-permafrost case.



For more information on AREVA's assessment of aquatic effects refer to the Draft Environmental Impact Statement, Tier 2 Volume 5.

Figure B-1: Display Panel – Aquatics. English (above), Inuktitut (below)

Sustainable Development: Thinking Long Term

ለፎርብሰር/ሮፍ ለጥክፍታዊ/ሮፍ፡ ለፈጣሪ/ሮፍ ጥገና/ሮፍ



We at AREVA understand that economic opportunity is welcomed by Nunavummiut but development is conditional on preserving a healthy environment and on the growth of vibrant communities.

Acknowledging effects associated with development, our extensive analysis has shown the Kiggavik Project will not compromise the ecosystem. Our work shows that this Project will have a positive overall effect on the region's economy and its communities. The life-long benefits of job experience and learning will extend beyond the Project.

We commit to consult and engage with Nunavummiut with openness and transparency and to learn more about how we can be a successful, long-term partner and members of the community.

[illegible]

Figure B-10: Display Panel: Sustainable Development

Open House – November 2013 **בחדר הנדסה - נובמבר 2013**



Did you learn something about the Kiggavik Project today? Yes___ No___
 Δεεεεεεεε εεεεεεεε εεεεεεεε εεεεεεεε εεεεεεεε εεεεεεεε εεεεεεεε εεεεεεεε εεεεεεεε εεεεεεεε

How satisfied are you with this project so far? 1 = Very Unsatisfied / 2 = Unsatisfied / 3 = Somewhat Satisfied / 4 = Satisfied / 5 = Very Satisfied

3 = $a_L^{04} a_L^{03} a_L^{02} a_L^{01} / 4 = a_L^{04} a_L^{03} a_L^{02} / 5 = a_L^{04} a_L^{03} a_L^{02} a_L^{01}$

1 / 2 / 3 / 4 / 5

What was the most interesting part of this open house?

[illegible]

- Talking with the AREVA project team _____ ጋራ ጥያቄዎችን ለማቅረብ
- Public Forum Questions and Answers _____ ለወጪዎች ጥያቄዎች ላይ ምላሽ መስጠት
- Reading the posters and/or handouts _____ ጥያቄዎችን ለማቅረብ ወይም ለማንበብ

Did we answer all of your questions? Yes___ No___

የሚገኝበት ስራ ለሌሎች ስራዎች ሊያገለግል ይችላል።

If you answered no, what questions would you like answered?

Q. b. 2. 4. 6. 8. 10. 12. 14. 16. 18. 20. 22. 24. 26. 28. 30. 32. 34. 36. 38. 40. 42. 44. 46. 48. 50. 52. 54. 56. 58. 60. 62. 64. 66. 68. 70. 72. 74. 76. 78. 80. 82. 84. 86. 88. 90. 92. 94. 96. 98. 100. 102. 104. 106. 108. 110. 112. 114. 116. 118. 120. 122. 124. 126. 128. 130. 132. 134. 136. 138. 140. 142. 144. 146. 148. 150. 152. 154. 156. 158. 160. 162. 164. 166. 168. 170. 172. 174. 176. 178. 180. 182. 184. 186. 188. 190. 192. 194. 196. 198. 200. 202. 204. 206. 208. 210. 212. 214. 216. 218. 220. 222. 224. 226. 228. 230. 232. 234. 236. 238. 240. 242. 244. 246. 248. 250. 252. 254. 256. 258. 260. 262. 264. 266. 268. 270. 272. 274. 276. 278. 280. 282. 284. 286. 288. 290. 292. 294. 296. 298. 300. 302. 304. 306. 308. 310. 312. 314. 316. 318. 320. 322. 324. 326. 328. 330. 332. 334. 336. 338. 340. 342. 344. 346. 348. 350. 352. 354. 356. 358. 360. 362. 364. 366. 368. 370. 372. 374. 376. 378. 380. 382. 384. 386. 388. 390. 392. 394. 396. 398. 400. 402. 404. 406. 408. 410. 412. 414. 416. 418. 420. 422. 424. 426. 428. 430. 432. 434. 436. 438. 440. 442. 444. 446. 448. 450. 452. 454. 456. 458. 460. 462. 464. 466. 468. 470. 472. 474. 476. 478. 480. 482. 484. 486. 488. 490. 492. 494. 496. 498. 500. 502. 504. 506. 508. 510. 512. 514. 516. 518. 520. 522. 524. 526. 528. 530. 532. 534. 536. 538. 540. 542. 544. 546. 548. 550. 552. 554. 556. 558. 560. 562. 564. 566. 568. 570. 572. 574. 576. 578. 580. 582. 584. 586. 588. 590. 592. 594. 596. 598. 600. 602. 604. 606. 608. 610. 612. 614. 616. 618. 620. 622. 624. 626. 628. 630. 632. 634. 636. 638. 640. 642. 644. 646. 648. 650. 652. 654. 656. 658. 660. 662. 664. 666. 668. 670. 672. 674. 676. 678. 680. 682. 684. 686. 688. 690. 692. 694. 696. 698. 700. 702. 704. 706. 708. 710. 712. 714. 716. 718. 720. 722. 724. 726. 728. 730. 732. 734. 736. 738. 740. 742. 744. 746. 748. 750. 752. 754. 756. 758. 760. 762. 764. 766. 768. 770. 772. 774. 776. 778. 780. 782. 784. 786. 788. 790. 792. 794. 796. 798. 800. 802. 804. 806. 808. 810. 812. 814. 816. 818. 820. 822. 824. 826. 828. 830. 832. 834. 836. 838. 840. 842. 844. 846. 848. 850. 852. 854. 856. 858. 860. 862. 864. 866. 868. 870. 872. 874. 876. 878. 880. 882. 884. 886. 888. 890. 892. 894. 896. 898. 900. 902. 904. 906. 908. 910. 912. 914. 916. 918. 920. 922. 924. 926. 928. 930. 932. 934. 936. 938. 940. 942. 944. 946. 948. 950. 952. 954. 956. 958. 960. 962. 964. 966. 968. 970. 972. 974. 976. 978. 980. 982. 984. 986. 988. 990. 992. 994. 996. 998. 1000. 1002. 1004. 1006. 1008. 1010. 1012. 1014. 1016. 1018. 1020. 1022. 1024. 1026. 1028. 1030. 1032. 1034. 1036. 1038. 1040. 1042. 1044. 1046. 1048. 1050. 1052. 1054. 1056. 1058. 1060. 1062. 1064. 1066. 1068. 1070. 1072. 1074. 1076. 1078. 1080. 1082. 1084. 1086. 1088. 1090. 1092. 1094. 1096. 1098. 1100. 1102. 1104. 1106. 1108. 1110. 1112. 1114. 1116. 1118. 1120. 1122. 1124. 1126. 1128. 1130. 1132. 1134. 1136. 1138. 1140. 1142. 1144. 1146. 1148. 1150. 1152. 1154. 1156. 1158. 1160. 1162. 1164. 1166. 1168. 1170. 1172. 1174. 1176. 1178. 1180. 1182. 1184. 1186. 1188. 1190. 1192. 1194. 1196. 1198. 1200. 1202. 1204. 1206. 1208. 1210. 1212. 1214. 1216. 1218. 1220. 1222. 1224. 1226. 1228. 1230. 1232. 1234. 1236. 1238. 1240. 1242. 1244. 1246. 1248. 1250. 1252. 1254. 1256. 1258. 1260. 1262. 1264. 1266. 1268. 1270. 1272. 1274. 1276. 1278. 1280. 1282. 1284. 1286. 1288. 1290. 1292. 1294. 1296. 1298. 1300. 1302. 1304. 1306. 1308. 1310. 1312. 1314. 1316. 1318. 1320. 1322. 1324. 1326. 1328. 1330. 1332. 1334. 1336. 1338. 1340. 1342. 1344. 1346. 1348. 1350. 1352. 1354. 1356. 1358. 1360. 1362. 1364. 1366. 1368. 1370. 1372. 1374. 1376. 1378. 1380. 1382. 1384. 1386. 1388. 1390. 1392. 1394. 1396. 1398. 1400. 1402. 1404. 1406. 1408. 1410. 1412. 1414. 1416. 1418. 1420. 1422. 1424. 1426. 1428. 1430. 1432. 1434. 1436. 1438. 1440. 1442. 1444. 1446. 1448. 1450. 1452. 1454. 1456. 1458. 1460. 1462. 1464. 1466. 1468. 1470. 1472. 1474. 1476. 1478. 1480. 1482. 1484. 1486. 1488. 1490. 1492. 1494. 1496. 1498. 1500. 1502. 1504. 1506. 1508. 1510. 1512. 1514. 1516. 1518. 1520. 1522. 1524. 1526. 1528. 1530. 1532. 1534. 1536. 1538. 1540. 1542. 1544. 1546. 154

Would you like to receive more information on:

- | | | | |
|------------------------------------|--------------|------------------------------|-----------------------------|
| • Radiation Protection? | ከጋራ ጋር ማረጋገጥ | Yes <input type="checkbox"/> | No <input type="checkbox"/> |
| • Uranium Mining? | ጋራ ጋር ማረጋገጥ | Yes <input type="checkbox"/> | No <input type="checkbox"/> |
| • The Regulatory Approval Process? | ጋራ ጋር ማረጋገጥ | Yes <input type="checkbox"/> | No <input type="checkbox"/> |
| • Monitoring and Mitigation? | ጋራ ጋር ማረጋገጥ | Yes <input type="checkbox"/> | No <input type="checkbox"/> |
| • Environmental Protection? | ጋራ ጋር ማረጋገጥ | Yes <input type="checkbox"/> | No <input type="checkbox"/> |
| • Economic Opportunities? | ጋራ ጋር ማረጋገጥ | Yes <input type="checkbox"/> | No <input type="checkbox"/> |
| • Other (Explain) | ጋራ ጋር ማረጋገጥ | Yes <input type="checkbox"/> | No <input type="checkbox"/> |

How would you like for AREVA to communicate with you – Open houses, meetings with your group, video/powerpoint presentation, blog, handouts, other? ንዓይን ገጽ ምስ ስልክ ምስ ብሮውዘር ፋይል ደብዳቤ - ልዑል ነበረናልዎም፡፡ ስለዚ ንዓይን ስልክ ምስ ብሮውዘር ፋይል ደብዳቤ ይመዘገብናልዎም፡፡ ስለዚ ንዓይን ስልክ ምስ ብሮውዘር ፋይል ደብዳቤ ይመዘገብናልዎም፡፡

Thank you for attending this open house. We value your comments.

Figure B-15: Open House Comment Form

Introduction

The Kiggavik Project is a proposed uranium mining and milling operation that would be located about 80 km west of Baker Lake, Nunavut that would employ 400 - 600 employees during operation and up to 750 people during construction. The project would consist of four uranium ore deposits mined using open pit methods and one deposit using underground methods.



AREVA would process the ore in a mill and manage tailings in mined-out pits. Workers would package and transport the uranium product from the site by air to southern transportation networks. Supplies would arrive by ship and barge at a dock and storage area in Baker Lake, and then transported to the mine site on a winter access road. An all-season road between Baker Lake and the Project may be built if it is needed to transport materials to the site.

Uranium from the Kiggavik Project would fuel nuclear power plants to help meet the world's growing energy demands while avoiding additional carbon emissions.

Key Facts

- The Kiggavik Project Environmental Impact statement reflects five years of recent engineering, environmental and public engagement studies conducted by AREVA, in addition to previous historical work.
- Community engagement and Inuit Qaujimajatuqangit (IQ) have influenced the project design and the environmental assessment.
- Detailed studies using comparisons to international standards demonstrate that modern uranium development is safe for workers and the public.

AREVA draws on 50 years of experience pursuing uranium mining activities in Canada while maintaining high standards for health, safety and environmental protection.

Figure B-16: Poster Book Introduction - Kiggavik



KIGGAVIK PROJECT

Monitoring and Mitigation

2013

AREVA is developing a proposed uranium mining and milling operation called the Kiggavik Project, which would bring positive economic opportunities to the region. AREVA must first demonstrate that the Kiggavik Project will not compromise the land or the people to receive a positive environmental assessment decision.

Environmental assessment is used as a sustainable development tool to design and adjust a project to balance environment, people and economics.

Through scientific studies, community consultation and the gathering of local IQ, AREVA and its consultants has gained substantial knowledge of the land and its people. This information provides a baseline of how the land currently exists prior to development. When combined with plans our engineers have developed for accessing and processing ore, we are provided with the ability to evaluate the various ways the project could interact with the environment and its people.

We studied this information so that we could maximize the positive effects and minimize the negative ones through mitigation. Examples of mitigation include the use of air pollution controls on exhaust stacks, diverting fresh water around the site, regular vehicle maintenance to reduce emissions and promote effective fuel consumption, and providing training.

To ensure our mitigation is working as predicted, we will also conduct monitoring. This can include radiation exposure monitoring, water monitoring, wildlife monitoring, air monitoring and soil monitoring through various sampling and study techniques.

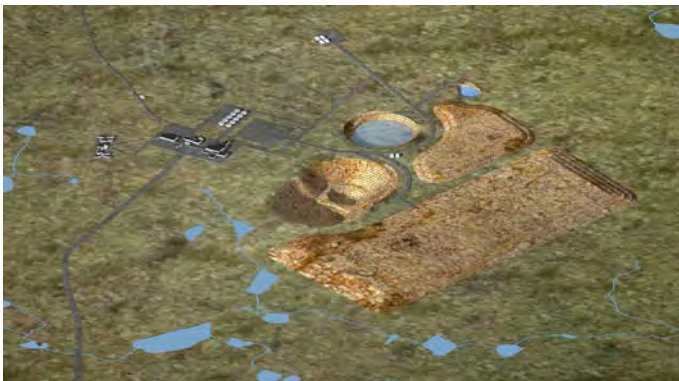
DESIGN-BASED MTIGATION



Water Diversion



Radiation Dose Controlled through Design of Facility



Minimize Size of Footprint

MITIGATION MANAGEMENT



Road Closures when Needed



Watering of Roads to Control Dust



Use of Personal Protection Equipment
(hard hats, safety glasses etc.)

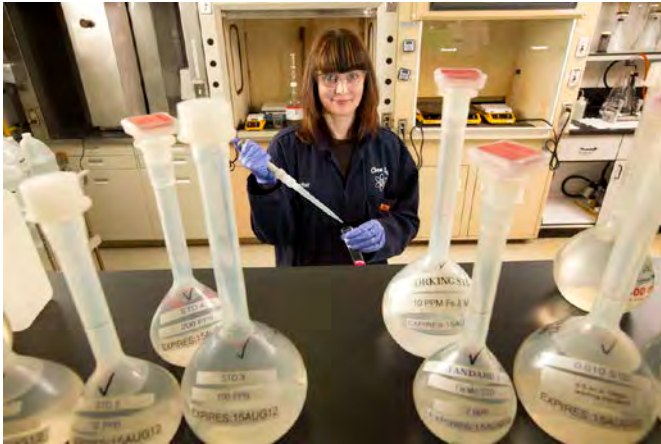
MONITORING EXAMPLES



Water monitoring



Radiation dose monitoring



Lab analysis

We want to know what you think is important when considering monitoring and mitigation.

Please provide your feedback on the questions below:


1. What mitigation measures or monitoring do you think AREVA should consider when we are constructing the facility, operating the mine, shipping supplies, building a road, building stream crossings that would prevent or reduce effects on the environment (wildlife, air, water, people, soil, vegetation) ?
2. What mitigations or monitoring can AREVA do to reduce any possible project effects on caribou migration?
3. How in your opinion can IQ be considered in mitigation and monitoring plans?

Name: _____

Community: _____

Date: _____





Youth

Kivalliq Open Houses 2013

Sign in Sheet

Date: Nov 13 2013 of L'An

Location: Arviat

Print Name: Arviat


1. Ryan Arviat
2. Arviat
3. Arviat
4. Arviat
5. Arviat
6. Arviat
7. Arviat
8. Arviat
9. Arviat
10. Arviat
11. Arviat
12. Arviat
13. Arviat
14. Arviat
15. Arviat
16. Arviat
17. Arviat
18. Arviat
19. Arviat
20. Arviat
21. Arviat
22. Arviat
23. Arviat
24. Arviat
25. Arviat


AREVA Resources Canada Inc.
 P.O. Box 9000, 200 St. Lawrence, Winnipeg, MB R2N 1A6, Canada
 Tel: (204) 444-4400 - Fax: (204) 444-4401 - Web Site: areva.ca

Figure C 2: Sign-in Sheet – Arviat

[illegible]

Figure C 3: Sign-in Sheets – Baker Lake





Kivalliq Open Houses 2013 ᑭᑭᑭᑭᑭᑭ ᑭᑭᑭᑭᑭᑭᑭᑭ 2013

Sign In Sheet ᑭᑭᑭᑭᑭᑭᑭᑭ

Date ᑭᑭᑭᑭᑭ 11/14 _____ of ᑭᑭᑭᑭᑭ 2 _____

Location ᑭᑭᑭᑭᑭ Norbert Lake _____

Print Name ᑭᑭᑭᑭᑭᑭᑭ KILLARAS YOUTHERN

1. Lillian Norbert
2. William Simon
3. Harold Thompson
4. Samuel Norbert
5. Thompson Norbert
6. Markus Norbert
7. Henry Thompson
8. Anna Simon
9. Sarahanna Thompson
10. David Thompson
11. Lucy Thompson
12. Anna Simon
13. Lucy Thompson
14. Anna Simon
15. Anna Simon
16. Anna Simon
17. Anna Simon
18. Anna Simon
19. Anna Simon
20. Anna Simon
21. Anna Simon
22. Anna Simon
23. Anna Simon
24. Anna Simon
25. Anna Simon

Kivalliq Open Houses 2013 ᑭᑭᑭᑭᑭᑭ ᑭᑭᑭᑭᑭᑭᑭᑭ 2013

Sign In Sheet ᑭᑭᑭᑭᑭᑭᑭᑭ

Date ᑭᑭᑭᑭᑭ Nov 14 _____ of ᑭᑭᑭᑭᑭ 1 _____

Location ᑭᑭᑭᑭᑭ Norbert Lake _____

Print Name ᑭᑭᑭᑭᑭᑭᑭ _____

1. Anna Simon
2. Anna Simon
3. Anna Simon
4. Anna Simon
5. Anna Simon
6. Anna Simon
7. Anna Simon
8. Anna Simon
9. Anna Simon
10. Anna Simon
11. Anna Simon
12. Anna Simon
13. Anna Simon
14. Anna Simon
15. Anna Simon
16. Anna Simon
17. Anna Simon
18. Anna Simon
19. Anna Simon
20. Anna Simon
21. Anna Simon
22. Anna Simon
23. Anna Simon
24. Anna Simon
25. Anna Simon

AREVA Resources Canada Inc.
 P.O. Box 5000, 1st Floor, Repulse, Nunavut, X0A 0S0, Canada
 Tel: (303) 441-4000 • Fax: (303) 441-4001 • www.arena.ca

Figure C 5: Sign-in Sheets – Baker Lake

Sign In Sheet $\triangleleft \nabla \rightarrow \triangleleft \nabla$

Print Name ၁၈၆ ၈၈၆၃၆

- AREVA Resources Canada Inc.**
P.O. Box 8204 - 817 - 43rd Street West - Saskatoon, SK S7N 3S5 - CANADA
Tel: 1 (306) 343-4500 - Fax: 1 (306) 653-2600 - Web Site: www.areva.ca

Part 7 - Kivalliq Community Information Sessions 2013
Appendix C Sign-in Sheets



Kivalliq Open Houses 2013 P&E of B&D/NCE/2013

Sign in Sheet 400-0000

Date: Nov 20, 2013 1 of 1 of 1 of 1
 Location: Rankin Inlet, NWT

- Print Name and initials
1. Robert Subagat
 2. Indy Poon Angstrom
 3. John Yip
 4. John Yip
 5. Robert Subagat
 6. Robert Subagat
 7. Robert Subagat
 8. Robert Subagat
 9. Robert Subagat
 10. Robert Subagat
 11. Robert Subagat
 12. Robert Subagat
 13. Robert Subagat
 14. Robert Subagat
 15. Robert Subagat
 16. Robert Subagat
 17. Robert Subagat
 18. Robert Subagat
 19. Robert Subagat
 20. Robert Subagat
 21. Robert Subagat
 22. Robert Subagat
 23. Robert Subagat
 24. Robert Subagat
 25. Robert Subagat

AREVA Resources Canada Inc.
 P.O. Box 1000 - 8th Floor - 4000 Boulevard de l'Industrie - Québec
 QC H3B 2Y6 - Canada

Figure C-10: Sign-In Sheet – Rankin Inlet



Kivalliq Open Houses 2013 P&C/F&E D&D/OT/OT 2013

Sign In Sheet 4000-0000

Date 0000 Nov 20, 2013

00 of 0000

Location 0000 Rankin Inlet, NU

Print Name 0000 0000

1. Eric Adams
2. John Adams
3. John Adams
4. John Adams
5. John Adams
6. John Adams
7. John Adams
8. John Adams
9. John Adams
10. John Adams
11. _____
12. _____
13. _____
14. _____
15. _____
16. _____
17. _____
18. _____
19. _____
20. _____
21. _____
22. _____
23. _____
24. _____
25. _____

AREVA Resources Canada Inc.
100 King Street West, Suite 1000, Toronto, ON M5X 1C5
Tel: 1-800-387-2222 Fax: 1-800-387-2222

Figure C-11: Sign-In Sheets – Rankin Inlet



Kivalliq Open Houses 2013: P&C-001: P&C-001/002 2013

Sign In Sheet: P&C-001/002

Date: November 15, 2013

Page 2 of 2

Location: Repulse Bay

Print Name: P&C-001/002

1. Shirley Kookak
2. Shirley Kookak
3. David Kookak
4. _____
5. _____
6. _____
7. _____
8. _____
9. _____
10. _____
11. _____
12. _____
13. _____
14. _____
15. _____
16. _____
17. _____
18. _____
19. _____
20. _____
21. _____
22. _____
23. _____
24. _____
25. _____

AREVA Resources Canada Inc.
P&C-001/002 - P&C-001/002 - P&C-001/002 - P&C-001/002
Tel: (800) 461-0000 / Fax: (800) 461-0000 - 000 000 000 000

Figure C-12: Sign-In Sheets – Repulse Bay

Kivalliq Open Houses 2013 - P^oC^o-907 - D^bdΔDⁿ/σ¹⁸ 2013

Kivalliq Open Houses 2013 P^oc^or^o D^odΔJN^o/σ^o 2013



Appendix D Photographs



Figure D-1 Baker Lake Open House, November 13, 2013



Figure D-2 Radiation Demonstration, Chesterfield Inlet, November 18, 2013



Figure D-3 Open House Rankin Inlet, November 20, 2013



Figure D-4 Open House Repulse Bay, November 15, 2013



Figure D-5 Open House Whale Cove, November 19, 2013



Figure D-6 High School Discussion Whale Cove, November 19, 2013