

# **Kiggavik Project Final Environmental Impact Statement**

Tier 3 Technical Appendix 3A  
Public Engagement Documentation

Part 8 – Transboundary Documentation

September 2014



# TABLE OF CONTENTS

1	Athabasca Denesuline (Fond du Lac, Black Lake, Hatchet Lake).....	1-1
	Athabasca 1. Letter from Tammy Van Lambalgan, Vice President of Regulatory Affairs, ARC to Ron Robillard ADNT Chief Negotiator, Prince Albert Grand Council “Information Sharing and Dialogue about AREVA Projects – The Path to 2015, Addition of AREVA’s Proposed Kiggavik Project to Upcoming Public Open Houses in the Athabasca Basin”, Aug 31, 2011; in Appendix 3A: Engagement Documentation.	
	Athabasca 2. Letter from Ron Robillard, President – Athabasca Denesuline Ne’ Ne’ Land Corp. to Ryan Barry, NIRB “AREVA Kiggavik Uranium Project – Athabasca Denesuline, NIRB File 09MN003”. December 4, 2013: in Appendix 3A: Engagement Documentation.	
	Athabasca 3. Letter from Ron Robillard, President – Athabasca Denesuline Ne’ Ne’ Land Corp. to Ryan Barry, NIRB “AREVA Kiggavik Uranium Project – Athabasca Denesuline, NIRB File 09MN003”. January 14, 2014: in Appendix 3A: Engagement Documentation.	
	Athabasca 4. Letter from Glenn Lafleur, Manager Northern Affairs, AREVA Resources to Chief Bart Tsannie, Hatchet Lake First Nation, “AREVA Resources Canada Inc.’s Project Update”, April 11, 2014: in Appendix 3A: Engagement Documentation.	
	Athabasca 5. Letter from Glenn Lafleur, Manager Northern Affairs, AREVA Resources to Chief Ricky Robillard, Black Lake First Nation, “AREVA Resources Canada Inc.’s Project Update”, April 11, 2014: in Appendix 3A: Engagement Documentation.	
	Athabasca 6. Letter from Glenn Lafleur, Manager Northern Affairs, AREVA Resources to Chief Earl Lidguerre, Fond du Lac First Nation, “AREVA Resources Canada Inc.’s Project Update”, April 11, 2014: in Appendix 3A: Engagement Documentation.	
	Athabasca 7. Letter from Barry McCallum, Manager Nunavut Affairs, AREVA Resources to Ron Robillard, Athabasca Denesuline Ne’ Ne’ Land Corp. “AREVA Resources Canada Inc.’s Project Update”, May 28, 2014: in Appendix 3A: Engagement Documentation.	

Athabasca 8. Letter from Ron Robillard, President – Athabasca Denesuline Ne’ Ne’ Land Corp. to Barry McCallum, AREVA Resources “AREVA Kiggavik Uranium Project – Athabasca Denesuline, NIRB File 09MN003”. August 18, 2014: in Appendix 3A: Engagement Documentation.

Athabasca 9. Letter from Barry McCallum, Manager Nunuvut Affairs, AREVA Resources Canada Inc. to Ron Robillard, Athabasca Denesuline Ne’ Ne’ Land Corp. August 28, 2014: in Appendix 3A: Engagement Documentation.

### 3 Lutsel Ke First Nation.....2-1

Lutsel Ke 1. Letter from Diane Martens, Regulatory Coordinator, ARC to Sonya Almond, LKDFN “Request for Community Engagement on Potential Impacts of Proposed Kiggavik Project” September 25, 2009; in Appendix 3A: Engagement Documentation.

Lutsel Ke 2. Letter from Tsatsiye Catholique, LKDFN to Diane Martens, ARC “Invitation to visit Lutsel K’e, NT for community update”, May 20, 2011; in Appendix 3A: Engagement Documentation.

Lutsel Ke 3. Letter from Diane Martens, Regulatory Coordinator, ARC to Tsatsiye Catholique, LKDFN “Community Update on AREVA Resources Canada Inc.’s Proposed Kiggavik Project”, July 13, 2011; in Appendix 3A: Engagement Documentation.

Lutsel K’e 4. Poster for Open House in Lutsel K’e, July 23, 2012, In Appendix 3A: Engagement Documentation

### 3 Manitoba Dene (Northlands, Denesuline in Lac Brochet and Tadoule Lake.....3-1

MB Dene 1. Letter from Barry McCallum, Manager Nunavut Affairs to Chief Walter Duck, Sayisi Dene First Nation “AREVA Resources Canada Inc. Proposed Kiggavik Project”. May 28, 2014: in Appendix 3A: Engagement Documentation.

MB Dene 2. Letter from Barry McCallum, Manager Nunavut Affairs to Chief Denttanikkeaze, Northlands Denesuline First Nation “AREVA Resources Canada Inc. Proposed Kiggavik Project”. May 28, 2014: in Appendix 3A: Engagement Documentation.

MB Dene 3. Kiggavik Project – Open House Report, Tadoule Lake, Manitoba, AREVA Resources Canada Inc. June 25, 2014: in Appendix 3A: Engagement Documentation.

MB Dene 4. Letter from Glenn Lafleur, Manager Northern Affairs, AREVA Resources Canada Inc. to Chief Denttanikkeaze, Northlands Denesuline First Nation “Employment Opportunities for Lac Brochet Band Members”. June 2, 2014: in Appendix 3A: Engagement Documentation.

MB Dene 5. Letter from Barry McCallum, Manager Nunavut Affairs to Chief Ernie Bussidor, Sayisi Dene First Nation “AREVA Resources Canada Inc. Proposed Kiggavik Project”. September 8, 2014, 2014: in Appendix 3A: Engagement Documentation.

MB Dene 6. Letter from Barry McCallum, Manager Nunavut Affairs to Chief Denttanikkeaze, Northlands Denesuline First Nation “AREVA Resources Canada Inc. Proposed Kiggavik Project”. September 8, 2014: in Appendix 3A: Engagement Documentation



# **1 Athabasca Denesuline (Fond du Lac, Black Lake, Hatchet Lake)**

---

Athabasca 1. Letter from Tammy Van Lambalgan, Vice President of Regulatory Affairs, ARC to Ron Robillard ADNT Chief Negotiator, Prince Albert Grand Council “Information Sharing and Dialogue about AREVA Projects – The Path to 2015, Addition of AREVA’s Proposed Kiggavik Project to Upcoming Public Open Houses in the Athabasca Basin”, Aug 31, 2011; in Appendix 3A: Engagement Documentation.

Athabasca 2. Letter from Ron Robillard, President – Athabasca Denesuline Ne’ Ne’ Land Corp. to Ryan Barry, NIRB “AREVA Kiggavik Uranium Project – Athabasca Denesuline, NIRB File 09MN003”. December 4, 2013: in Appendix 3A: Engagement Documentation.

Athabasca 3. Letter from Ron Robillard, President – Athabasca Denesuline Ne’ Ne’ Land Corp. to Ryan Barry, NIRB “AREVA Kiggavik Uranium Project – Athabasca Denesuline, NIRB File 09MN003”. January 14, 2014: in Appendix 3A: Engagement Documentation.

Athabasca 4. Letter from Glenn Lafleur, Manager Northern Affairs, AREVA Resources to Chief Bart Tsannie, Hatchet Lake First Nation, “AREVA Resources Canada Inc.’s Project Update”, April 11, 2014: in Appendix 3A: Engagement Documentation.

Athabasca 5. Letter from Glenn Lafleur, Manager Northern Affairs, AREVA Resources to Chief Ricky Robillard, Black Lake First Nation, “AREVA Resources Canada Inc.’s Project Update”, April 11, 2014: in Appendix 3A: Engagement Documentation.

Athabasca 6. Letter from Glenn Lafleur, Manager Northern Affairs, AREVA Resources to Chief Earl Lidguerre, Fond du Lac First Nation, “AREVA Resources Canada Inc.’s Project Update”, April 11, 2014: in Appendix 3A: Engagement Documentation.

Athabasca 7. Letter from Barry McCallum, Manager Nunavut Affairs, AREVA Resources to Ron Robillard, Athabasca Denesuline Ne’ Ne’ Land Corp. “AREVA Resources Canada Inc.’s Project Update”, May 28, 2014: in Appendix 3A: Engagement Documentation.

Athabasca 8. Letter from Ron Robillard, President – Athabasca Denesuline Ne’ Ne’ Land Corp. to Barry McCallum, AREVA Resources “AREVA Kiggavik Uranium Project – Athabasca Denesuline, NIRB File 09MN003”. August 18, 2014: in Appendix 3A: Engagement Documentation.

Athabasca 9. Letter from Barry McCallum, Manager Nunuvut Affairs, AREVA Resources Canada Inc. to Ron Robillard, Athabasca Denesuline Ne' Ne' Land Corp. August 28, 2014: in Appendix 3A: Engagement Documentation.





VIA REGISTERED MAIL

August 31, 2011

Ron Robillard  
ADNT Chief Negotiator, Prince Albert Grand Council  
2300 9<sup>th</sup> Avenue West  
Prince Albert, SK S6V 6Z1

Dear Mr Robillard:

**Re: Information Sharing and Dialogue about AREVA Projects – The Path to 2015  
Addition of AREVA's Proposed Kiggavik Project to Upcoming Public Open Houses in  
the Athabasca Basin**

AREVA Resources Canada ("AREVA") is planning to be in the Athabasca Basin the week of September 19, 2011 to conduct open house meetings on a variety of AREVA's activities with a focus on providing information related to proposed projects at the McClean Lake Operation. In addition to the Saskatchewan projects and activities identified in our letter dated August 16, 2011 and listed again below, we will come prepared to discuss AREVA's proposed Kiggavik Project in Nunavut. Open houses will have information available on the following company projects and activities:

- CNSC licence amendment to operate the high grade facilities, accept McArthur River ore slurry and increase annual production to 13 million pounds of uranium concentrate ( $U_3O_8$ )
- Midwest Project Environmental Assessment;
- JEB TMF Expansion Project;
- recommencement of mining at McClean Lake through underground mining;
- upcoming business/contract opportunities the McClean Lake operation;
- upcoming employment opportunities;
- updates on our Corporate Social Responsibility initiatives; and
- the proposed Kiggavik Project located in Nunavut.

AREVA would like to acknowledge the participation of the Prince Albert Grand Council (PAGC) in the Nunavut Impact Review Board (NIRB) review of the proposed Kiggavik Project to date. We note that the PAGC has participated in the NIRB screening and guideline development with submissions to the NIRB dated February 10, 2009 and January 24, 2011. Aboriginal Affairs and Northern Development Canada has acknowledged that the Athabasca Denesuline have a legitimate interest in the proposed

**AREVA Resources Canada Inc.**

P.O. Box 9204 — 817 - 45th Street West — Saskatoon, SK S7K 3X5 — CANADA  
Tel: 1 (306) 343-4500 — Fax: 1 (306) 653-3883 — Web Site: [www.avevaresources.ca](http://www.avevaresources.ca)

Kiggavik Project in the intervenor funding decision letter dated August 3, 2010. Concerns raised in PAGC submissions for the NIRB review process and intervenor funding are primarily with respect to caribou and the relationship between the Beverly and Qamanirjuaq caribou herds and the Athabasca Denesuline Nations of Fond du Lac, Black Lake and Hatchet Lake.

Given concerns expressed by the PAGC and AREVA's desire to understand potential impacts of the proposed project and in particular, potential impacts to the rights and interests of the Fond du Lac, Black Lake and Hatchet Lake First Nations, AREVA will have someone available throughout the Athabasca Basin during this open house tour to answer questions on the proposed Kiggavik Project and to listen and record feedback offered. The upcoming meetings are a continuation of AREVA's two-way communication with northern leaders, AREVA employees, First Nation and Métis communities and interested Athabasca Basin community members.

Meetings with leadership were requested in the AREVA letter dated August 16, 2011 but have not yet been confirmed. If First Nation and Métis leadership of the Athabasca basin communities wish to discuss the proposed Kiggavik Project we will gladly arrange meetings. Please contact Glenn Lafleur at (306) 425-6880 to arrange further discussions on any of AREVA's projects. You can also contact Carolanne Inglis-McQuay, Regulatory Coordinator, at (306) 343-4555 or Tina Searcy, Regulatory Coordinator, at (306) 343-4525.

Consistent with our Saskatchewan operations, it is AREVA's intent to design and implement the Kiggavik Project in a way that respects and protects ecosystem integrity. By minimizing and mitigating impacts to caribou and working collaboratively with stakeholders we believe the Kiggavik Project can be carried out without adversely affecting caribou users within or outside the Nunavut Settlement Area. We are committed to meaningful dialogue with you about all of AREVA's projects and on-going operations and we look forward to the opportunity to further the relationship between AREVA and Athabasca Basin communities.

Yours truly,

A handwritten signature in dark ink, appearing to read 'Tammy Van Lambalgen'.

Tammy Van Lambalgen  
Vice President Regulatory Affairs & General Counsel

rp/11-0346L

cc: Don Deranger, PAGC, Tina Giroux, PAGC, Chief Donald Sayazie, Black Lake, Chief Bart Tsannie, Hatchet Lake  
Chief Napoleon Mercredi, Fond du Lac,



**Athabasca Denesuline Negotiation Team**

04 December 2013

Nunavut Impact Review Board  
Attn: Ryan Barry  
P.O. Box 1360  
Cambridge Bay, NU X0B 0C0

RE: AREVA KIGGAVIK URANIUM PROJECT – ATHABASCA DENESULINE, NIRB FILE  
#09MN003

Dear Mr. Barry,

The Athabasca Denesuline were recently made aware that there have been significant changes in AREVA's proposed Kiggavik Uranium Mine proposal. These changes, namely the decision to now fly the yellowcake from Kiggavik to Points North in Northern Saskatchewan, are of major concern to the Athabasca Denesuline (AD).

First, the AD were not made aware of this significant change in the project. The communities were NOT consulted (even prior to this change) by AREVA or the Crown. This change has the potential to significantly and severely increase the impact on aboriginal and Treaty Rights of the AD. It is very troubling that AREVA or the Government has not felt it necessary to discuss these changes with the communities that would be impacted. There must be full engagement on consultation obligation, as well as to accommodate and reconcile, where necessary, with aboriginal peoples whose aboriginal and Treaty Rights may be adversely affected by the proposed project. As identified previously, our participation in the Beverly-Qaminirjuaq Caribou Management Board (BQCMB) does not and should never be interpreted as consultation with the AD. Our involvement with the BQCMB ensures that our primary concern over impacts on caribou populations are identified and included.

Due to lack of consultation, the AD do not know at this time the details of the changes involved. It is understood that a Hercules C130 aircraft would be transporting 4000 tonnes of yellowcake per year to an airstrip at Points North, Saskatchewan. The flight path of this aircraft would be almost entirely over Athabasca Denesuline traditional territory. This is a critical area, where the AD practice their culture and earn their livelihood. The risk of one of these aircrafts crashing onto land or water would be

Email: [rrobillard@adnlc.ca](mailto:rrobillard@adnlc.ca) or [tgiroux@adnlc.ca](mailto:tgiroux@adnlc.ca)

Chief Joseph Custer Reserve # 201

Mailing address: Box 23126 South Hill PO, Prince Albert, Sask. S6V 8A7

Phone: (306) 765-2560 Fax: (306) 763-2973

critically and irreversibly destructive to the entire ecosystem of the area. Water systems connect throughout the north, and containment would be difficult, if not impossible. In addition, the AD are seriously concerned how the barren-ground caribou populations would be adversely affected if such a catastrophe would occur. AREVA, at this time, is unable to answer how a catastrophic spill of this magnitude could be cleaned up effectively, especially in such remote locations. Aware of the potential problem they are apparently working on these calculations. The risk of losing a healthy ecosystem for countless generations is not something that the AD are willing to gamble with.

In addition, an increase in large trucks hauling yellowcake will result in the increased likelihood of motor vehicle accidents along the route, both in collisions and in wildlife mortalities. Has this been considered in the EIS? This concerns the AD, as it is our people who will be impacted, as we use those roads to travel south. Also, can the roads and more specifically the bridges support the increased traffic over time? The AD request that these questions be addressed in detail within the Environmental Impact Statement.

The concerns mentioned above are not an inclusive list of issues that the AD have with the proposed project. In the event we are consulted in a more meaningful way and receive further information, we will be able to more comprehensively describe our concerns/questions.

We invite AREVA and the regulatory agencies to the Athabasca Denesuline communities for community consultations. Please coordinate through the Athabasca Denesuline Né Né Land Corporation office by contacting Connie Cheecham at [ccheecham@adnlc.ca](mailto:ccheecham@adnlc.ca) or (306) 765-2560.

We thank you for your prompt response to this letter. If you have any questions please do not hesitate to contact me at (306) 765-2560 or email: [rrobillard@adnlc.ca](mailto:rrobillard@adnlc.ca)

Regards,

A handwritten signature in black ink, appearing to read 'R. Robillard', with a stylized flourish at the end.

Ron Robillard  
President – Athabasca Denesuline Né Né Land Corp.

Cc:

Diane Martens – AREVA Resources Canada Inc.

Tammy Van Lambalgen, AREVA Resources Canada Inc.

Caroline Ducros, Canadian Nuclear Safety Commission

Earl Evans – Chair BQCMB

Chief Earl Lidguerre – Fond du Lac Denesuline First Nation

Chief Rick Robillard – Black Lake Denesuline First Nation

Chief Bart Tsannie – Hatchet Lake Denesuline First Nation

Hugh Ikoe – Baker Lake Hunters Trappers Organization





**Athabasca Denesuline Negotiation Team**

14 January 2014

Nunavut Impact Review Board  
Attn: Ryan Barry  
P.O. Box 1360  
Cambridge Bay, NU X0B 0C0

RE: AREVA KIGGAVIK URANIUM PROJECT – ATHABASCA DENESULINE, NIRB FILE  
#09MN003

Dear Mr. Barry,

We have received your letter, dated December 17, 2013, in response to our concerns regarding the transportation of yellowcake over our traditional territory. Thank you for your prompt reply. However, you have not addressed some key points we raised in the letter.

First, as mentioned in our previous letter, the Athabasca Denesuline (AD) have been involved early in the process due to our concerns over the impact that the Kiggavik Uranium mine would have on the caribou populations. This is still a major and real concern for the AD. However, now the AD have further impacts from this proposed mine. We would like to understand how this will impact our communities. Although we have requested numerous times (over several years), AREVA and regulatory agencies have failed to consult adequately with the AD on this project. If we were part of an effective consultation process, we would have been aware when the decision to transport yellowcake to northern Saskatchewan was made.

Secondly, it is of concern that there are no details found in the EIS on the possible impacts this alternative method of transportation could cause to the environment and to the AD people. This review process has failed to provide us with any comprehensive information on what the impacts would be.

Email: [rrobillard@adnlc.ca](mailto:rrobillard@adnlc.ca) or [tgiroux@adnlc.ca](mailto:tgiroux@adnlc.ca)

Chief Joseph Custer Reserve # 201

Mailing address: Box 23126 South Hill PO, Prince Albert, Sask. S6V 8A7

Phone: (306) 765-2560 Fax: (306) 763-2973

We request that all the information on the impacts and mitigation measures put in place by AREVA regarding this specific method of transportation be sent to our office in a timely manner. This information would include answers to the following questions:

1. In the event of an Hercules C130 crash carrying barrels of yellowcake, how would AREVA clean up the dispersion of powder-like uranium concentrate in:
  - a. Lakes?
  - b. Rivers?
  - c. Marshes, bogs?
  - d. Land – tundra?
  - e. Land – forest?
  - f. How would seasons impact the ability for AREVA to clean it up (winter, spring, summer and fall)?
2. How effective would the clean-up be (effect of residual yellowcake)?
3. How quickly would the response time be? Does this depend on season?
4. How would this spill impact on the Athabasca Denesuline way of life and use of the land, ie. Ability to hunt, trap, fish, gather, practice cultural activities, etc.
5. How would a spill of this magnitude impact on migratory barrenground caribou populations?
6. What is the proposed flight path of the aircraft? The AD would like to see a map.

These are all possible biophysical and socio-economic impacts of the project, and as such is in NIRB's mandate to understand all of these impacts in order to make recommendations and decisions on the project. Similarly, once we receive this information, the AD will then be able to review and provide "specific comments and concerns [we] may have on this aspect of the proposed project" to you, in order for you understand all the impacts.

To reiterate, the AD do not support the transportation of yellowcake from Kiggavik mine to Points North, as referenced by the attached Motion (12 December 2013) by the Denesuline Né Né Land Corporation Board of Directors, and by the Resolution (13 December 2013) passed by the Athabasca Denesuline Negotiation Team, comprised of Elders, Leaders, and land-users.

We continue to invite AREVA and the regulatory agencies to the Athabasca Denesuline communities for community consultations. To date, we have not received any response. If you have any questions please do not hesitate to contact me at (306) 765-2560 or email: [rrobillard@adnnc.ca](mailto:rrobillard@adnnc.ca)

Regards,



Ron Robillard  
President – Athabasca Denesuline Né Né Land Corp.



April 11, 2014

Chief Earl Lidguerre  
P.O. Box 211  
Fond Du Lac, SK S0J 0W0

Dear Chief Lidguerre:

**Re: AREVA Resources Canada Inc.'s Project Update**

AREVA Resources Canada Inc. ("AREVA") would like to extend a formal request to the Fond du Lac First Nation Chief and Council for a meeting to provide an operation update on the McClean Lake Operation and discuss AREVA projects currently under regulatory review.

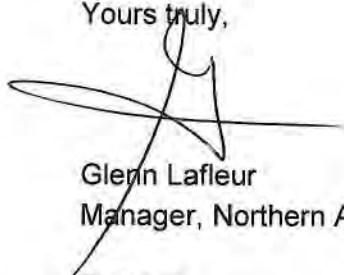
AREVA is requesting a couple of hours of your time to discuss AREVA projects. A suggested meeting agenda is below:

1. **Introductions** (10 minutes)
2. **TMF Expansion Project** (40 minutes): Follow up to the March 27, 2014 letter and submission of licensing application document for review by Diane McDonald (Athabasca Land & Resource Office), as directed in communication signed by the three Athabasca Basin First Nation Chiefs (dated February 19, 2014). See attached.
3. **Kiggavik Project** (40 minutes): Currently undergoing environmental assessment led by the Nunavut Impact Review Board ("NIRB"); AREVA is requesting to meet in response to requests made by the Athabasca Denesuline Negotiation Team to discuss the proposed project with Chief and council
4. **McClean Lake Operational Update** (20 minutes)
5. **Other** (10 minutes)

For background information on the discussion items that AREVA is proposing for this meeting, in regard to the TMF Expansion Project and the Kiggavik Project Environmental Assessment, please refer to the attached documents. Please advise if leadership would prefer a separate meeting to discuss the proposed Kiggavik Project.

Please contact me at 306-425-6885 to establish a convenient meeting date and location, and also to let me know if there are any topics of particular interest to you or your colleagues.

Yours truly,

A handwritten signature in black ink, appearing to be 'Glenn Lafleur', written over a horizontal line.

Glenn Lafleur  
Manager, Northern Affairs

Enclosure

March 27, 2014 AREV letter to Diane McDonald  
Attachment B Kiggavik Project Update





**COURIER**

March 27, 2014

Ms. Diane McDonald  
Athabasca Land & Resource Office  
325-2555 Grasswood Road East  
Corman Park SK S7T 0K1

Dear Ms. McDonald:

**Re: AREVA Resources Canada Inc.'s – McClean Lake Operation JEB Tailings Management Facility Expansion Project**

As you are aware, AREVA Resources Canada Inc. ("AREVA") has requested to amend the McClean Lake Operating Licence issued by the Canadian Nuclear Safety Commission ("CNSC") and the Province of Saskatchewan (the "Province") to allow for the construction and expansion of the JEB Tailings Management Facility ("TMF") at the McClean Lake Operation (the "Project"). The draft EIS for this Project was submitted to the CNSC and the Province in August 2011 for review. Although the Project was not deemed to require an environmental assessment ("EA") by the Saskatchewan Ministry of Environment, it did initially trigger an EA under the *Canadian Environmental Assessment Act* ("CEAA"). However, with the changes to CEAA that came into effect in 2012, a federal EA is also no longer required for the Project. Accordingly, the Project is required to be reviewed under the licensing requirements of the CNSC and the Province. In November 2012, AREVA provided the CNSC a document titled the Licence Application which contained a comprehensive review of the environmental aspects of the proposed Project, which should not be considered as indicative of the level of information that would be, or should be, normally required for licence amendments that do not trigger environmental assessments under the CEAA. The CNSC conducted a technical review of the License Application; AREVA responded to these comments and provided the revised package to the CNSC on February 4<sup>th</sup>, 2014.

As part of AREVA's commitment to providing information to target audiences and members of the public and to assist in meeting regulatory requirements, AREVA developed an Aboriginal and Public Information Program for the Project. This Program was developed to outline how and when AREVA will share project information. Consistent with the program, AREVA has been engaging various target audiences on the proposed Project since early 2011 and continues to provide information on a regular

basis and as requested. These efforts have included presentations and discussions with the leadership of the Black Lake Denesuline First Nation, Fond du Lac Denesuline First Nation, the Hatchet Lake Denesuline First Nation, the Northern Environmental Quality Committee ("NEQC"), the Athabasca Working Group ("AWG") and public open house forums in each of the Athabasca Basin communities, as well as other communities that are not located within the Athabasca Basin. AREVA has provided numerous presentations, as well as multi-day workshops on the Project with the NEQC. A table summarizing these efforts since 2011 is provided below:

<b>Audience</b>	<b># of Meetings<sup>1</sup></b>
EQC	8 meetings and 2 workshops
AWG	6 meetings
Fond du Lac	3 community open houses; 1 meeting with leadership
Black Lake	3 community open houses; 2 meeting with leadership
Stony Rapids	3 community open houses; 3 meeting with leadership
Wollaston Lake/Hatchet Lake	3 community open houses; 3 meeting with leadership
Uranium City	3 community open houses; 3 meeting with leadership
Other – Air Ronge (2), La Ronge (2), Pinehouse (2), Buffalo Narrows (2), Beauval (2), Southend (2), Ile-a-la-Crosse (1), LLIB (1)	

<sup>1</sup> Occurrences where the project was specifically presented or discussed

A comprehensive report on AREVA's Aboriginal and Public Information Program for this Project (up to end of 2012) has been provided to the Regulators. This report will be updated to include our 2013 and 2014 activities prior to the Canadian Nuclear Safety Commission hearing. In the final months of the review of the proposed Project, AREVA will continue to engage target audiences through mail-outs, regular scheduled meetings, during the Northern tour and upon request.

As per the February 19, 2014, letter received by AREVA from the Athabasca Land & Resources Office, identifying yourself as the primary contact for regulatory proceedings and interventions, AREVA is providing you with a copy of the Licensing Application (February 2014). This is the current available version containing AREVA's response to comments received from the CNSC. We would also request an opportunity to meet in person to present and discuss project details. We would like to suggest meeting in advance or in conjunction with your review of the document and then again following your review to address any further comments or concerns.





We would very much appreciate it if you could contact either myself at (306) 343-4569 or Tina Searcy at (306) 343-4525 to discuss this request.

Yours truly,

A handwritten signature in blue ink, reading 'Lambalgen'.

Tammy Van Lambalgen  
VP, Regulatory Affairs

ML 14260-02

Enclosure



**Attachment B: AREVA Resources Canada Inc. Kiggavik Project Update**

AREVA Resources Canada Inc. (AREVA) is proposing the development of the Kiggavik Project located approximately 80 km west of the Hamlet of Baker Lake in the Kivalliq Region of Nunavut. The Kiggavik environmental assessment is led by the Nunavut Impact Review Board (NIRB) with opportunities to participate throughout the NIRB process or alternatively, directly with AREVA. The Athabasca Denesuline Negotiation Team, with the Prince Albert Grand Council (PAGC) and on behalf of the communities of Black Lake, Fond du Lac and Hatchet Lake, has participated in the NIRB review of the Kiggavik Project as early as 2009.

AREVA provided the PAGC with a copy of the draft Environmental Impact Statement (EIS) in May 2012 and has shared Kiggavik Project information with northern Saskatchewan residents through our existing Saskatchewan offices, public community tours and newsletters associated with our Saskatchewan operations. AREVA accepts the offer extended from the Athabasca Denesuline Negotiation Team to visit your community, provide answers to questions community members may have, and to discuss the proposed project with Chief and Council as detailed in the covering letter. At this time we are establishing meetings with leadership, visits to your communities may be scheduled for a later date. Further, AREVA will continue to make Kiggavik project information available on the project website and through Saskatchewan-based newsletters, and our LaRonge office.

AREVA is currently revising our EIS for the proposed Kiggavik Project anticipating a final EIS submission in September 2014. Submissions by the Athabasca Denesuline Negotiation Team with respect to the Kiggavik Project have highlighted two primary concerns throughout the review to date.

**1. The importance of the Beverly and Qamanirjuaq Caribou Herds to the Health and Identity of the Athabasca Denesuline**

It is AREVA's intention to design a project that minimizes effects to caribou, and to ecosystem integrity in general, so that caribou users will not be adversely affected within or outside the Nunavut Settlement Area. Attached is Figure 6-1 showing the project location, the Beverly and Qamanirjuaq caribou herd annual ranges as determined by the Government of Nunavut and the communities of Black Lake, Fond du Lac and Hatchett Lake, Saskatchewan. AREVA acknowledges that caribou use the landscape without consideration of jurisdictional boundaries and we note that the attached figure represents that the proposed Kiggavik Project is on the outer northern edge of the Qamanirjuaq annual range and that the Project is unlikely to regularly interact with Beverly caribou whose annual range lies primarily west of Kiggavik. When assessing potential cumulative and transboundary effects, we considered an area that covers the annual range of caribou herds overlapping with the proposed



project, extending into the Northwest Territories, Saskatchewan and Manitoba. We are pleased to discuss the caribou assessment, potential effects and suggested mitigation or monitoring that could take place for project operation to further respect both the caribou and those who depend on them.

## **2. Transportation of Uranium Concentrate to Southern Markets**

AREVA has considered a number of options in designing the Kiggavik Project including the transportation of uranium concentrate to market by marine shipping or air. The Athabasca Denesuline Negotiation Team has expressed concerns over the possibility of an airplane crash and the subsequent response and potential effects. As requested in a letter dated January 14, 2014 to Mr. Ryan Barry (NIRB) from Ron Robillard (President – Athabasca Denesuline Ne Ne Land Corp.) please find attached a hard copy the DEIS Volume 10 – Accidents and Malfunctions, DEIS Appendix 10A – Transportation Risk Assessment and Appendix 10C – Emergency Response Plan. These Documents are also publically available on the NIRB ftp site<sup>1</sup> or the Kiggavik website<sup>2</sup>.

Emergency Response Assistance Plans (ERAP) describes actions taken following an incident including: notification to authorities, assembly and deployment of the response team, access to and then securement of the area, clean up and remediation as required, inspection and reporting. AREVA is currently revising the EIS for submission, including revisions to accidents and malfunctions and response plans as informed through the NIRB-lead review process. The Kiggavik Project will require an ERAP that will be reviewed and approved by Transport Canada every three years throughout Project life, including feedback from Transport Canada, the Canadian Nuclear Safety Commission, local communities and other interested parties. We are open to discussing these documents and revisions for the final EIS with you in greater detail.

### **Enclosure**

Kiggavik Draft Environmental Impact Statement Volume 10 – Accidents and Malfunctions

Kiggavik Draft Environmental Impact Statement Appendix 10A – Transportation Risk Assessment

Kiggavik Draft Environmental Impact Statement Appendix 10C – Emergency Response Plan

cc: Ryan Barry, Nunavut Impact Review Board  
Earl Evans, Beverly Qamanirjuaq Caribou Management Board  
Denis Schryer, Canadian Nuclear Safety Commission  
Hugh Ikoe, Baker Lake Hunter and Trappers Organization

---

<sup>1</sup> <http://ftp.nirb.ca/> by selecting the following links: 02-REVIEWS, ACTIVE REVIEWS, 09MN003-AREVA KIGGAVIK, 2-REVIEW, 06-DRAFT EIS & CONFORMITY REVIEW, 02-DEIS SUBMISSION, VOL 10

<sup>2</sup> <http://kiggavik.ca/>



**Athabasca Denesuline Negotiation Team**

14 January 2014

Nunavut Impact Review Board  
Attn: Ryan Barry  
P.O. Box 1360  
Cambridge Bay, NU X0B 0C0

RE: AREVA KIGGAVIK URANIUM PROJECT – ATHABASCA DENESULINE, NIRB FILE  
#09MN003

Dear Mr. Barry,

We have received your letter, dated December 17, 2013, in response to our concerns regarding the transportation of yellowcake over our traditional territory. Thank you for your prompt reply. However, you have not addressed some key points we raised in the letter.

First, as mentioned in our previous letter, the Athabasca Denesuline (AD) have been involved early in the process due to our concerns over the impact that the Kiggavik Uranium mine would have on the caribou populations. This is still a major and real concern for the AD. However, now the AD have further impacts from this proposed mine. We would like to understand how this will impact our communities. Although we have requested numerous times (over several years), AREVA and regulatory agencies have failed to consult adequately with the AD on this project. If we were part of an effective consultation process, we would have been aware when the decision to transport yellowcake to northern Saskatchewan was made.

Secondly, it is of concern that there are no details found in the EIS on the possible impacts this alternative method of transportation could cause to the environment and to the AD people. This review process has failed to provide us with any comprehensive information on what the impacts would be.

Email: [rrobillard@adnlc.ca](mailto:rrobillard@adnlc.ca) or [tgiroux@adnlc.ca](mailto:tgiroux@adnlc.ca)

Chief Joseph Custer Reserve # 201

Mailing address: Box 23126 South Hill PO, Prince Albert, Sask. S6V 8A7

Phone: (306) 765-2560 Fax: (306) 763-2973

We request that all the information on the impacts and mitigation measures put in place by AREVA regarding this specific method of transportation be sent to our office in a timely manner. This information would include answers to the following questions:

1. In the event of an Hercules C130 crash carrying barrels of yellowcake, how would AREVA clean up the dispersion of powder-like uranium concentrate in:
  - a. Lakes?
  - b. Rivers?
  - c. Marshes, bogs?
  - d. Land – tundra?
  - e. Land – forest?
  - f. How would seasons impact the ability for AREVA to clean it up (winter, spring, summer and fall)?
2. How effective would the clean-up be (effect of residual yellowcake)?
3. How quickly would the response time be? Does this depend on season?
4. How would this spill impact on the Athabasca Denesuline way of life and use of the land, ie. Ability to hunt, trap, fish, gather, practice cultural activities, etc.
5. How would a spill of this magnitude impact on migratory barrenground caribou populations?
6. What is the proposed flight path of the aircraft? The AD would like to see a map.

These are all possible biophysical and socio-economic impacts of the project, and as such is in NIRB's mandate to understand all of these impacts in order to make recommendations and decisions on the project. Similarly, once we receive this information, the AD will then be able to review and provide "specific comments and concerns [we] may have on this aspect of the proposed project" to you, in order for you understand all the impacts.

To reiterate, the AD do not support the transportation of yellowcake from Kiggavik mine to Points North, as referenced by the attached Motion (12 December 2013) by the Denesuline Né Né Land Corporation Board of Directors, and by the Resolution (13 December 2013) passed by the Athabasca Denesuline Negotiation Team, comprised of Elders, Leaders, and land-users.

We continue to invite AREVA and the regulatory agencies to the Athabasca Denesuline communities for community consultations. To date, we have not received any response. If you have any questions please do not hesitate to contact me at (306) 765-2560 or email: [rrobillard@adnnc.ca](mailto:rrobillard@adnnc.ca)

Regards,



Ron Robillard  
President – Athabasca Denesuline Né Né Land Corp.

Cc:

Diane Martens – AREVA Resources Canada Inc.

Tammy Van Lambalgen, AREVA Resources Canada Inc.

Caroline Ducros, Canadian Nuclear Safety Commission

Earl Evans – Chair BQCMB

Chief Earl Lidguerre – Fond du Lac Denesuline First Nation

Chief Rick Robillard – Black Lake Denesuline First Nation

Chief Bart Tsannie – Hatchet Lake Denesuline First Nation

Hugh Ikoe – Baker Lake Hunters Trappers Organization





NIRB File No.: 09MN003

December 17, 2013

Ron Robillard  
President, Athabasca Denesuline Né Né Land Corp.  
Box 23126, South Hill PO,  
Prince Albert, SK S6V 8A7

Sent via email: [rrobillard@adnlc.ca](mailto:rrobillard@adnlc.ca)

**Re: Nunavut Impact Review Board's Response to Athabasca Denesuline Correspondence Regarding "Significant Change" to AREVA's Proposed Kiggavik Project, NIRB File No. 09MN003**

Dear Ron Robillard:

Thank you for your correspondence provided on behalf of the Athabasca Denesuline dated December 4, 2013 and received by the Nunavut Impact Review Board (NIRB or Board) on December 9, 2013. While your correspondence identifies general issues with respect to the Athabasca Denesuline's overarching rights to consultation, which extend beyond the NIRB's processes and which I will not address as a result, the Board is able to provide clarification on some of the technical and NIRB process points raised in your letter.

At the outset, you noted that:

*The Athabasca Denesuline were recently made aware that there have been significant changes in AREVA's proposed Kiggavik Uranium Mine proposal. These changes, namely the decision to now fly the yellowcake from Kiggavik to Points North in Northern Saskatchewan, are of major concern to the Athabasca Denesuline (AD).*

You have characterized this transportation method as a "significant change in the project" for which the communities were not consulted. Although the Board cannot speak to consultation activities of the Federal Crown or the Project Proponent, AREVA Resources Canada Inc. (AREVA), that have been conducted outside the NIRB's assessment for the Kiggavik project proposal (NIRB File No. 09MN003), the Board does note that this transportation option was identified at the initial project proposal stage in November 2008 and was referenced in the Board's initial screening decision report in March, 2009 that recommended to the Minister that the project undergo a review under Article 12, Part 5 or Part 6 of the Nunavut Land Claims Agreement (NLCA). As indicated in the NIRB's public registry, the Athabasca Denesuline did

provide comments to the Board regarding the project proposal at the time of the NIRB's screening and has participated on an on-going basis in the subsequent review.

Although the NIRB recognizes that the Athabasca Denesuline may wish to provide more specific comment with respect to this aspect of the project, the Board does not agree that this transportation option is a "significant change" to the original project proposal that was not previously included or accounted for in the review of this project proposal. As noted in the *Final Scope* for the NIRB's Assessment of the Kiggavik Project Proposal Project, issued in February 2011:

*In addition, two possibilities have been proposed for the transportation of the yellowcake from Kiggavik to southern Canada. 1) Direct air transport from Kiggavik to Churchill, or to Points North, Saskatchewan. The yellowcake would then be transported via rail (Churchill) or truck (Points North) to southern Canada. 2) Truck transport to Baker Lake and shipped with returning barges to Churchill. The yellowcake would then be transported via rail to its final destination.*

Similarly, in December 2011 when the Draft Environmental Impact Statement was submitted to the NIRB by AREVA, there were references throughout to this aspect of the project, including in the Summary of Project Activities (Tier 2, Volume 2, p. 20-7 of the Draft Environmental Impact Statement), Alternatives Assessment, Yellowcake Transport Alternatives (Tier 3, Appendix 2A, Section 13).

Reflecting this background, it is the Board's view that this aspect of the project has been included in the scope of the assessment since the receipt of the Kiggavik project proposal and does not constitute a significant change to the project as proposed, as screened, as scoped or as currently reviewed. The NIRB does however wish to encourage the Athabasca Denesuline to provide the Board with any specific comments and concerns it may have regarding this aspect of the proposed project and also encourages the Athabasca Denesuline to engage in further discussions with the Project Proponent and applicable regulatory agencies regarding questions or additional information you may require to develop subsequent submissions to the Board on these points.

If you have any questions or require further clarification from the Board regarding this matter, please feel free to contact me directly at (867) 983-4608 or via email at [rbarry@nirb.ca](mailto:rbarry@nirb.ca).

Sincerely,



Ryan Barry  
Executive Director  
Nunavut Impact Review Board

cc: Diane Martens, AREVA Resources Canada Inc.  
Tammy Van Lambalgen, AREVA Resources Canada Inc.  
Caroline Ducros, Canadian Nuclear Safety Commission  
Earl Evans, Beverly and Qamanirjuaq Caribou Management Board  
Chief Earl Lidguerre, Fond du Lac Denesuline First Nation  
Chief Rick Robillard, Black Lake Denesuline First Nation  
Chief Bart Tsannie, Hatchet Lake Denesuline First Nation  
Hugh Ikoe, Baker Lake Hunters' and Trappers' Organization  
Kiggavik Distribution List



April 11, 2014

Chief Ricky Robillard  
P.O. Box 27  
Black Lake, SK S0J 0H0

Dear Chief Robillard:

**Re: AREVA Resources Canada Inc.'s Project Update**

AREVA Resources Canada Inc. ("AREVA") would like to extend a formal request to the Black Lake First Nation Chief and Council for a meeting to provide an operation update on the McClean Lake Operation and discuss AREVA projects currently under regulatory review.

AREVA is requesting a couple of hours of your time to discuss AREVA projects. A suggested meeting agenda is below:


1. **Introductions** (10 minutes)
2. **TMF Expansion Project** (40 minutes): Follow up to the March 27, 2014 letter and submission of licensing application document for review by Diane McDonald (Athabasca Land & Resource Office), as directed in communication signed by the three Athabasca Basin First Nation Chiefs (dated February 19, 2014). See attached.
3. **Kiggavik Project** (40 minutes): Currently undergoing environmental assessment led by the Nunavut Impact Review Board ("NIRB"); AREVA is requesting to meet in response to requests made by the Athabasca Denesuline Negotiation Team to discuss the proposed project with Chief and council
4. **McClean Lake Operational Update** (20 minutes)
5. **Other** (10 minutes)

For background information on the discussion items that AREVA is proposing for this meeting, in regard to the TMF Expansion Project and the Kiggavik Project Environmental Assessment, please refer to the attached documents. Please advise if leadership would prefer a separate meeting to discuss the proposed Kiggavik Project.



Please contact me at 306-425-6885 to establish a convenient meeting date and location, and also to let me know if there are any topics of particular interest to you or your colleagues.

Yours truly,



Glenn Lafleur  
Manager, Northern Affairs

Enclosure

March 27, 2014 AREV letter to Diane McDonald  
Attachment B Kiggavik Project Update





COURIER

March 27, 2014

Ms. Diane McDonald  
Athabasca Land & Resource Office  
325-2555 Grasswood Road East  
Corman Park SK S7T 0K1

Dear Ms. McDonald:

**Re: AREVA Resources Canada Inc.'s – McClean Lake Operation JEB Tailings Management Facility Expansion Project**

As you are aware, AREVA Resources Canada Inc. ("AREVA") has requested to amend the McClean Lake Operating Licence issued by the Canadian Nuclear Safety Commission ("CNSC") and the Province of Saskatchewan (the "Province") to allow for the construction and expansion of the JEB Tailings Management Facility ("TMF") at the McClean Lake Operation (the "Project"). The draft EIS for this Project was submitted to the CNSC and the Province in August 2011 for review. Although the Project was not deemed to require an environmental assessment ("EA") by the Saskatchewan Ministry of Environment, it did initially trigger an EA under the *Canadian Environmental Assessment Act* ("CEAA"). However, with the changes to CEAA that came into effect in 2012, a federal EA is also no longer required for the Project. Accordingly, the Project is required to be reviewed under the licensing requirements of the CNSC and the Province. In November 2012, AREVA provided the CNSC a document titled the Licence Application which contained a comprehensive review of the environmental aspects of the proposed Project, which should not be considered as indicative of the level of information that would be, or should be, normally required for licence amendments that do not trigger environmental assessments under the CEAA. The CNSC conducted a technical review of the License Application; AREVA responded to these comments and provided the revised package to the CNSC on February 4<sup>th</sup>, 2014.

As part of AREVA's commitment to providing information to target audiences and members of the public and to assist in meeting regulatory requirements, AREVA developed an Aboriginal and Public Information Program for the Project. This Program was developed to outline how and when AREVA will share project information. Consistent with the program, AREVA has been engaging various target audiences on the proposed Project since early 2011 and continues to provide information on a regular

basis and as requested. These efforts have included presentations and discussions with the leadership of the Black Lake Denesuline First Nation, Fond du Lac Denesuline First Nation, the Hatchet Lake Denesuline First Nation, the Northern Environmental Quality Committee ("NEQC"), the Athabasca Working Group ("AWG") and public open house forums in each of the Athabasca Basin communities, as well as other communities that are not located within the Athabasca Basin. AREVA has provided numerous presentations, as well as multi-day workshops on the Project with the NEQC. A table summarizing these efforts since 2011 is provided below:

<b>Audience</b>	<b># of Meetings<sup>1</sup></b>
EQC	8 meetings and 2 workshops
AWG	6 meetings
Fond du Lac	3 community open houses; 1 meeting with leadership
Black Lake	3 community open houses; 2 meeting with leadership
Stony Rapids	3 community open houses; 3 meeting with leadership
Wollaston Lake/Hatchet Lake	3 community open houses; 3 meeting with leadership
Uranium City	3 community open houses; 3 meeting with leadership
Other – Air Ronge (2), La Ronge (2), Pinehouse (2), Buffalo Narrows (2), Beauval (2), Southend (2), Ile-a-la-Crosse (1), LLIB (1)	

<sup>1</sup> Occurrences where the project was specifically presented or discussed

A comprehensive report on AREVA's Aboriginal and Public Information Program for this Project (up to end of 2012) has been provided to the Regulators. This report will be updated to include our 2013 and 2014 activities prior to the Canadian Nuclear Safety Commission hearing. In the final months of the review of the proposed Project, AREVA will continue to engage target audiences through mail-outs, regular scheduled meetings, during the Northern tour and upon request.

As per the February 19, 2014, letter received by AREVA from the Athabasca Land & Resources Office, identifying yourself as the primary contact for regulatory proceedings and interventions, AREVA is providing you with a copy of the Licensing Application (February 2014). This is the current available version containing AREVA's response to comments received from the CNSC. We would also request an opportunity to meet in person to present and discuss project details. We would like to suggest meeting in advance or in conjunction with your review of the document and then again following your review to address any further comments or concerns.





We would very much appreciate it if you could contact either myself at (306) 343-4569 or Tina Searcy at (306) 343-4525 to discuss this request.

Yours truly,

A handwritten signature in blue ink, appearing to read 'Lambalgen'.

Tammy Van Lambalgen  
VP, Regulatory Affairs

ML 14260-02

Enclosure





**Attachment B: AREVA Resources Canada Inc. Kiggavik Project Update**

AREVA Resources Canada Inc. (AREVA) is proposing the development of the Kiggavik Project located approximately 80 km west of the Hamlet of Baker Lake in the Kivalliq Region of Nunavut. The Kiggavik environmental assessment is led by the Nunavut Impact Review Board (NIRB) with opportunities to participate throughout the NIRB process or alternatively, directly with AREVA. The Athabasca Denesuline Negotiation Team, with the Prince Albert Grand Council (PAGC) and on behalf of the communities of Black Lake, Fond du Lac and Hatchet Lake, has participated in the NIRB review of the Kiggavik Project as early as 2009.

AREVA provided the PAGC with a copy of the draft Environmental Impact Statement (EIS) in May 2012 and has shared Kiggavik Project information with northern Saskatchewan residents through our existing Saskatchewan offices, public community tours and newsletters associated with our Saskatchewan operations. AREVA accepts the offer extended from the Athabasca Denesuline Negotiation Team to visit your community, provide answers to questions community members may have, and to discuss the proposed project with Chief and Council as detailed in the covering letter. At this time we are establishing meetings with leadership, visits to your communities may be scheduled for a later date. Further, AREVA will continue to make Kiggavik project information available on the project website and through Saskatchewan-based newsletters, and our LaRonge office.

AREVA is currently revising our EIS for the proposed Kiggavik Project anticipating a final EIS submission in September 2014. Submissions by the Athabasca Denesuline Negotiation Team with respect to the Kiggavik Project have highlighted two primary concerns throughout the review to date.

**1. The importance of the Beverly and Qamanirjuaq Caribou Herds to the Health and Identity of the Athabasca Denesuline**

It is AREVA's intention to design a project that minimizes effects to caribou, and to ecosystem integrity in general, so that caribou users will not be adversely affected within or outside the Nunavut Settlement Area. Attached is Figure 6-1 showing the project location, the Beverly and Qamanirjuaq caribou herd annual ranges as determined by the Government of Nunavut and the communities of Black Lake, Fond du Lac and Hatchett Lake, Saskatchewan. AREVA acknowledges that caribou use the landscape without consideration of jurisdictional boundaries and we note that the attached figure represents that the proposed Kiggavik Project is on the outer northern edge of the Qamanirjuaq annual range and that the Project is unlikely to regularly interact with Beverly caribou whose annual range lies primarily west of Kiggavik. When assessing potential cumulative and transboundary effects, we considered an area that covers the annual range of caribou herds overlapping with the proposed



project, extending into the Northwest Territories, Saskatchewan and Manitoba. We are pleased to discuss the caribou assessment, potential effects and suggested mitigation or monitoring that could take place for project operation to further respect both the caribou and those who depend on them.

## **2. Transportation of Uranium Concentrate to Southern Markets**

AREVA has considered a number of options in designing the Kiggavik Project including the transportation of uranium concentrate to market by marine shipping or air. The Athabasca Denesuline Negotiation Team has expressed concerns over the possibility of an airplane crash and the subsequent response and potential effects. As requested in a letter dated January 14, 2014 to Mr. Ryan Barry (NIRB) from Ron Robillard (President – Athabasca Denesuline Ne Ne Land Corp.) please find attached a hard copy the DEIS Volume 10 – Accidents and Malfunctions, DEIS Appendix 10A – Transportation Risk Assessment and Appendix 10C – Emergency Response Plan. These Documents are also publically available on the NIRB ftp site<sup>1</sup> or the Kiggavik website<sup>2</sup>.

Emergency Response Assistance Plans (ERAP) describes actions taken following an incident including: notification to authorities, assembly and deployment of the response team, access to and then securement of the area, clean up and remediation as required, inspection and reporting. AREVA is currently revising the EIS for submission, including revisions to accidents and malfunctions and response plans as informed through the NIRB-lead review process. The Kiggavik Project will require an ERAP that will be reviewed and approved by Transport Canada every three years throughout Project life, including feedback from Transport Canada, the Canadian Nuclear Safety Commission, local communities and other interested parties. We are open to discussing these documents and revisions for the final EIS with you in greater detail.

### **Enclosure**

Kiggavik Draft Environmental Impact Statement Volume 10 – Accidents and Malfunctions

Kiggavik Draft Environmental Impact Statement Appendix 10A – Transportation Risk Assessment

Kiggavik Draft Environmental Impact Statement Appendix 10C – Emergency Response Plan

cc: Ryan Barry, Nunavut Impact Review Board  
Earl Evans, Beverly Qamanirjuaq Caribou Management Board  
Denis Schryer, Canadian Nuclear Safety Commission  
Hugh Ikoe, Baker Lake Hunter and Trappers Organization

---

<sup>1</sup> <http://ftp.nirb.ca/> by selecting the following links: 02-REVIEWS, ACTIVE REVIEWS, 09MN003-AREVA KIGGAVIK, 2-REVIEW, 06-DRAFT EIS & CONFORMITY REVIEW, 02-DEIS SUBMISSION, VOL 10

<sup>2</sup> <http://kiggavik.ca/>



**Athabasca Denesuline Negotiation Team**

14 January 2014

Nunavut Impact Review Board  
Attn: Ryan Barry  
P.O. Box 1360  
Cambridge Bay, NU X0B 0C0

RE: AREVA KIGGAVIK URANIUM PROJECT – ATHABASCA DENESULINE, NIRB FILE  
#09MN003

Dear Mr. Barry,

We have received your letter, dated December 17, 2013, in response to our concerns regarding the transportation of yellowcake over our traditional territory. Thank you for your prompt reply. However, you have not addressed some key points we raised in the letter.

First, as mentioned in our previous letter, the Athabasca Denesuline (AD) have been involved early in the process due to our concerns over the impact that the Kiggavik Uranium mine would have on the caribou populations. This is still a major and real concern for the AD. However, now the AD have further impacts from this proposed mine. We would like to understand how this will impact our communities. Although we have requested numerous times (over several years), AREVA and regulatory agencies have failed to consult adequately with the AD on this project. If we were part of an effective consultation process, we would have been aware when the decision to transport yellowcake to northern Saskatchewan was made.

Secondly, it is of concern that there are no details found in the EIS on the possible impacts this alternative method of transportation could cause to the environment and to the AD people. This review process has failed to provide us with any comprehensive information on what the impacts would be.

Email: [rrobillard@adnlc.ca](mailto:rrobillard@adnlc.ca) or [tgiroux@adnlc.ca](mailto:tgiroux@adnlc.ca)

Chief Joseph Custer Reserve # 201

Mailing address: Box 23126 South Hill PO, Prince Albert, Sask. S6V 8A7

Phone: (306) 765-2560 Fax: (306) 763-2973

We request that all the information on the impacts and mitigation measures put in place by AREVA regarding this specific method of transportation be sent to our office in a timely manner. This information would include answers to the following questions:

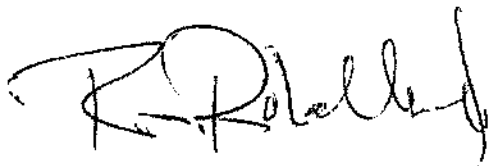
1. In the event of an Hercules C130 crash carrying barrels of yellowcake, how would AREVA clean up the dispersion of powder-like uranium concentrate in:
  - a. Lakes?
  - b. Rivers?
  - c. Marshes, bogs?
  - d. Land – tundra?
  - e. Land – forest?
  - f. How would seasons impact the ability for AREVA to clean it up (winter, spring, summer and fall)?
2. How effective would the clean-up be (effect of residual yellowcake)?
3. How quickly would the response time be? Does this depend on season?
4. How would this spill impact on the Athabasca Denesuline way of life and use of the land, ie. Ability to hunt, trap, fish, gather, practice cultural activities, etc.
5. How would a spill of this magnitude impact on migratory barrenground caribou populations?
6. What is the proposed flight path of the aircraft? The AD would like to see a map.

These are all possible biophysical and socio-economic impacts of the project, and as such is in NIRB's mandate to understand all of these impacts in order to make recommendations and decisions on the project. Similarly, once we receive this information, the AD will then be able to review and provide "specific comments and concerns [we] may have on this aspect of the proposed project" to you, in order for you understand all the impacts.

To reiterate, the AD do not support the transportation of yellowcake from Kiggavik mine to Points North, as referenced by the attached Motion (12 December 2013) by the Denesuline Né Né Land Corporation Board of Directors, and by the Resolution (13 December 2013) passed by the Athabasca Denesuline Negotiation Team, comprised of Elders, Leaders, and land-users.

We continue to invite AREVA and the regulatory agencies to the Athabasca Denesuline communities for community consultations. To date, we have not received any response. If you have any questions please do not hesitate to contact me at (306) 765-2560 or email: [rrobillard@adnnc.ca](mailto:rrobillard@adnnc.ca)

Regards,



Ron Robillard  
President – Athabasca Denesuline Né Né Land Corp.

Cc:

Diane Martens – AREVA Resources Canada Inc.

Tammy Van Lambalgen, AREVA Resources Canada Inc.

Caroline Ducros, Canadian Nuclear Safety Commission

Earl Evans – Chair BQCMB

Chief Earl Lidguerre – Fond du Lac Denesuline First Nation

Chief Rick Robillard – Black Lake Denesuline First Nation

Chief Bart Tsannie – Hatchet Lake Denesuline First Nation

Hugh Ikoe – Baker Lake Hunters Trappers Organization





provide comments to the Board regarding the project proposal at the time of the NIRB's screening and has participated on an on-going basis in the subsequent review.

Although the NIRB recognizes that the Athabasca Denesuline may wish to provide more specific comment with respect to this aspect of the project, the Board does not agree that this transportation option is a "significant change" to the original project proposal that was not previously included or accounted for in the review of this project proposal. As noted in the *Final Scope* for the NIRB's Assessment of the Kiggavik Project Proposal Project, issued in February 2011:

*In addition, two possibilities have been proposed for the transportation of the yellowcake from Kiggavik to southern Canada. 1) Direct air transport from Kiggavik to Churchill, or to Points North, Saskatchewan. The yellowcake would then be transported via rail (Churchill) or truck (Points North) to southern Canada. 2) Truck transport to Baker Lake and shipped with returning barges to Churchill. The yellowcake would then be transported via rail to its final destination.*

Similarly, in December 2011 when the Draft Environmental Impact Statement was submitted to the NIRB by AREVA, there were references throughout to this aspect of the project, including in the Summary of Project Activities (Tier 2, Volume 2, p. 20-7 of the Draft Environmental Impact Statement), Alternatives Assessment, Yellowcake Transport Alternatives (Tier 3, Appendix 2A, Section 13).

Reflecting this background, it is the Board's view that this aspect of the project has been included in the scope of the assessment since the receipt of the Kiggavik project proposal and does not constitute a significant change to the project as proposed, as screened, as scoped or as currently reviewed. The NIRB does however wish to encourage the Athabasca Denesuline to provide the Board with any specific comments and concerns it may have regarding this aspect of the proposed project and also encourages the Athabasca Denesuline to engage in further discussions with the Project Proponent and applicable regulatory agencies regarding questions or additional information you may require to develop subsequent submissions to the Board on these points.

If you have any questions or require further clarification from the Board regarding this matter, please feel free to contact me directly at (867) 983-4608 or via email at [rbarry@nirb.ca](mailto:rbarry@nirb.ca).

Sincerely,



Ryan Barry  
Executive Director  
Nunavut Impact Review Board

cc: Diane Martens, AREVA Resources Canada Inc.  
Tammy Van Lambalgen, AREVA Resources Canada Inc.  
Caroline Ducros, Canadian Nuclear Safety Commission  
Earl Evans, Beverly and Qamanirjuaq Caribou Management Board  
Chief Earl Lidguerre, Fond du Lac Denesuline First Nation  
Chief Rick Robillard, Black Lake Denesuline First Nation  
Chief Bart Tsannie, Hatchet Lake Denesuline First Nation  
Hugh Ikoe, Baker Lake Hunters' and Trappers' Organization  
Kiggavik Distribution List





April 11, 2014

Chief Bart Tsannie  
General Delivery  
Wollaston Lake, SK S0J 3C0

Dear Chief Tsannie:

**Re: AREVA Resources Canada Inc.'s Project Update**

AREVA Resources Canada Inc. ("AREVA") would like to extend a formal request to the Hatchet Lake First Nation Chief and Council for a meeting to provide an operation update on the McClean Lake Operation and discuss AREVA projects currently under regulatory review.

AREVA is requesting a couple of hours of your time to discuss AREVA projects. A suggested meeting agenda is below:

1. **Introductions** (10 minutes)
2. **TMF Expansion Project** (40 minutes): Follow up to the March 27, 2014 letter and submission of licensing application document for review by Diane McDonald (Athabasca Land & Resource Office), as directed in communication signed by the three Athabasca Basin First Nation Chiefs (dated February 19, 2014). See attached.
3. **Kiggavik Project** (40 minutes): Currently undergoing environmental assessment led by the Nunavut Impact Review Board ("NIRB"); AREVA is requesting to meet in response to requests made by the Athabasca Denesuline Negotiation Team to discuss the proposed project with Chief and council
4. **McClean Lake Operational Update** (20 minutes)
5. **Other** (10 minutes)

For background information on the discussion items that AREVA is proposing for this meeting, in regard to the TMF Expansion Project and the Kiggavik Project Environmental Assessment, please refer to the attached documents. Please advise if leadership would prefer a separate meeting to discuss the proposed Kiggavik Project.



Please contact me at 306-425-6885 to establish a convenient meeting date and location, and also to let me know if there are any topics of particular interest to you or your colleagues.

Yours truly,

A handwritten signature in black ink, appearing to be 'Glenn Lafleur', written over a horizontal line.

Glenn Lafleur  
Manager, Northern Affairs

Enclosure

March 27, 2014 AREV letter to Diane McDonald  
Attachment B Kiggavik Project Update



COURIER

March 27, 2014

Ms. Diane McDonald  
Athabasca Land & Resource Office  
325-2555 Grasswood Road East  
Corman Park SK S7T 0K1

Dear Ms. McDonald:

**Re: AREVA Resources Canada Inc.'s – McClean Lake Operation JEB Tailings Management Facility Expansion Project**

As you are aware, AREVA Resources Canada Inc. ("AREVA") has requested to amend the McClean Lake Operating Licence issued by the Canadian Nuclear Safety Commission ("CNSC") and the Province of Saskatchewan (the "Province") to allow for the construction and expansion of the JEB Tailings Management Facility ("TMF") at the McClean Lake Operation (the "Project"). The draft EIS for this Project was submitted to the CNSC and the Province in August 2011 for review. Although the Project was not deemed to require an environmental assessment ("EA") by the Saskatchewan Ministry of Environment, it did initially trigger an EA under the *Canadian Environmental Assessment Act* ("CEAA"). However, with the changes to CEAA that came into effect in 2012, a federal EA is also no longer required for the Project. Accordingly, the Project is required to be reviewed under the licensing requirements of the CNSC and the Province. In November 2012, AREVA provided the CNSC a document titled the Licence Application which contained a comprehensive review of the environmental aspects of the proposed Project, which should not be considered as indicative of the level of information that would be, or should be, normally required for licence amendments that do not trigger environmental assessments under the CEAA. The CNSC conducted a technical review of the License Application; AREVA responded to these comments and provided the revised package to the CNSC on February 4<sup>th</sup>, 2014.

As part of AREVA's commitment to providing information to target audiences and members of the public and to assist in meeting regulatory requirements, AREVA developed an Aboriginal and Public Information Program for the Project. This Program was developed to outline how and when AREVA will share project information. Consistent with the program, AREVA has been engaging various target audiences on the proposed Project since early 2011 and continues to provide information on a regular



basis and as requested. These efforts have included presentations and discussions with the leadership of the Black Lake Denesuline First Nation, Fond du Lac Denesuline First Nation, the Hatchet Lake Denesuline First Nation, the Northern Environmental Quality Committee ("NEQC"), the Athabasca Working Group ("AWG") and public open house forums in each of the Athabasca Basin communities, as well as other communities that are not located within the Athabasca Basin. AREVA has provided numerous presentations, as well as multi-day workshops on the Project with the NEQC. A table summarizing these efforts since 2011 is provided below:

<b>Audience</b>	<b># of Meetings<sup>1</sup></b>
EQC	8 meetings and 2 workshops
AWG	6 meetings
Fond du Lac	3 community open houses; 1 meeting with leadership
Black Lake	3 community open houses; 2 meeting with leadership
Stony Rapids	3 community open houses; 3 meeting with leadership
Wollaston Lake/Hatchet Lake	3 community open houses; 3 meeting with leadership
Uranium City	3 community open houses; 3 meeting with leadership
Other – Air Ronge (2), La Ronge (2), Pinehouse (2), Buffalo Narrows (2), Beauval (2), Southend (2), Ile-a-la-Crosse (1), LLIB (1)	

<sup>1</sup> Occurrences where the project was specifically presented or discussed

A comprehensive report on AREVA's Aboriginal and Public Information Program for this Project (up to end of 2012) has been provided to the Regulators. This report will be updated to include our 2013 and 2014 activities prior to the Canadian Nuclear Safety Commission hearing. In the final months of the review of the proposed Project, AREVA will continue to engage target audiences through mail-outs, regular scheduled meetings, during the Northern tour and upon request.

As per the February 19, 2014, letter received by AREVA from the Athabasca Land & Resources Office, identifying yourself as the primary contact for regulatory proceedings and interventions, AREVA is providing you with a copy of the Licensing Application (February 2014). This is the current available version containing AREVA's response to comments received from the CNSC. We would also request an opportunity to meet in person to present and discuss project details. We would like to suggest meeting in advance or in conjunction with your review of the document and then again following your review to address any further comments or concerns.





We would very much appreciate it if you could contact either myself at (306) 343-4569 or Tina Searcy at (306) 343-4525 to discuss this request.

Yours truly,

A handwritten signature in blue ink, reading 'Lambalgen'.

Tammy Van Lambalgen  
VP, Regulatory Affairs

ML 14260-02

Enclosure



## **Attachment B: AREVA Resources Canada Inc. Kiggavik Project Update**

AREVA Resources Canada Inc. (AREVA) is proposing the development of the Kiggavik Project located approximately 80 km west of the Hamlet of Baker Lake in the Kivalliq Region of Nunavut. The Kiggavik environmental assessment is led by the Nunavut Impact Review Board (NIRB) with opportunities to participate throughout the NIRB process or alternatively, directly with AREVA. The Athabasca Denesuline Negotiation Team, with the Prince Albert Grand Council (PAGC) and on behalf of the communities of Black Lake, Fond du Lac and Hatchet Lake, has participated in the NIRB review of the Kiggavik Project as early as 2009.

AREVA provided the PAGC with a copy of the draft Environmental Impact Statement (EIS) in May 2012 and has shared Kiggavik Project information with northern Saskatchewan residents through our existing Saskatchewan offices, public community tours and newsletters associated with our Saskatchewan operations. AREVA accepts the offer extended from the Athabasca Denesuline Negotiation Team to visit your community, provide answers to questions community members may have, and to discuss the proposed project with Chief and Council as detailed in the covering letter. At this time we are establishing meetings with leadership, visits to your communities may be scheduled for a later date. Further, AREVA will continue to make Kiggavik project information available on the project website and through Saskatchewan-based newsletters, and our LaRonge office.

AREVA is currently revising our EIS for the proposed Kiggavik Project anticipating a final EIS submission in September 2014. Submissions by the Athabasca Denesuline Negotiation Team with respect to the Kiggavik Project have highlighted two primary concerns throughout the review to date.

### **1. The importance of the Beverly and Qamanirjuaq Caribou Herds to the Health and Identity of the Athabasca Denesuline**

It is AREVA's intention to design a project that minimizes effects to caribou, and to ecosystem integrity in general, so that caribou users will not be adversely affected within or outside the Nunavut Settlement Area. Attached is Figure 6-1 showing the project location, the Beverly and Qamanirjuaq caribou herd annual ranges as determined by the Government of Nunavut and the communities of Black Lake, Fond du Lac and Hatchett Lake, Saskatchewan. AREVA acknowledges that caribou use the landscape without consideration of jurisdictional boundaries and we note that the attached figure represents that the proposed Kiggavik Project is on the outer northern edge of the Qamanirjuaq annual range and that the Project is unlikely to regularly interact with Beverly caribou whose annual range lies primarily west of Kiggavik. When assessing potential cumulative and transboundary effects, we considered an area that covers the annual range of caribou herds overlapping with the proposed



project, extending into the Northwest Territories, Saskatchewan and Manitoba. We are pleased to discuss the caribou assessment, potential effects and suggested mitigation or monitoring that could take place for project operation to further respect both the caribou and those who depend on them.

## **2. Transportation of Uranium Concentrate to Southern Markets**

AREVA has considered a number of options in designing the Kiggavik Project including the transportation of uranium concentrate to market by marine shipping or air. The Athabasca Denesuline Negotiation Team has expressed concerns over the possibility of an airplane crash and the subsequent response and potential effects. As requested in a letter dated January 14, 2014 to Mr. Ryan Barry (NIRB) from Ron Robillard (President – Athabasca Denesuline Ne Ne Land Corp.) please find attached a hard copy the DEIS Volume 10 – Accidents and Malfunctions, DEIS Appendix 10A – Transportation Risk Assessment and Appendix 10C – Emergency Response Plan. These Documents are also publically available on the NIRB ftp site<sup>1</sup> or the Kiggavik website<sup>2</sup>.

Emergency Response Assistance Plans (ERAP) describes actions taken following an incident including: notification to authorities, assembly and deployment of the response team, access to and then securement of the area, clean up and remediation as required, inspection and reporting. AREVA is currently revising the EIS for submission, including revisions to accidents and malfunctions and response plans as informed through the NIRB-lead review process. The Kiggavik Project will require an ERAP that will be reviewed and approved by Transport Canada every three years throughout Project life, including feedback from Transport Canada, the Canadian Nuclear Safety Commission, local communities and other interested parties. We are open to discussing these documents and revisions for the final EIS with you in greater detail.

### **Enclosure**

Kiggavik Draft Environmental Impact Statement Volume 10 – Accidents and Malfunctions

Kiggavik Draft Environmental Impact Statement Appendix 10A – Transportation Risk Assessment

Kiggavik Draft Environmental Impact Statement Appendix 10C – Emergency Response Plan

cc: Ryan Barry, Nunavut Impact Review Board  
Earl Evans, Beverly Qamanirjuaq Caribou Management Board  
Denis Schryer, Canadian Nuclear Safety Commission  
Hugh Ikoe, Baker Lake Hunter and Trappers Organization

---

<sup>1</sup> <http://ftp.nirb.ca/> by selecting the following links: 02-REVIEWS, ACTIVE REVIEWS, 09MN003-AREVA KIGGAVIK, 2-REVIEW, 06-DRAFT EIS & CONFORMITY REVIEW, 02-DEIS SUBMISSION, VOL 10

<sup>2</sup> <http://kiggavik.ca/>



**Athabasca Denesuline Negotiation Team**

14 January 2014

Nunavut Impact Review Board  
Attn: Ryan Barry  
P.O. Box 1360  
Cambridge Bay, NU X0B 0C0

RE: AREVA KIGGAVIK URANIUM PROJECT – ATHABASCA DENESULINE, NIRB FILE  
#09MN003

Dear Mr. Barry,

We have received your letter, dated December 17, 2013, in response to our concerns regarding the transportation of yellowcake over our traditional territory. Thank you for your prompt reply. However, you have not addressed some key points we raised in the letter.

First, as mentioned in our previous letter, the Athabasca Denesuline (AD) have been involved early in the process due to our concerns over the impact that the Kiggavik Uranium mine would have on the caribou populations. This is still a major and real concern for the AD. However, now the AD have further impacts from this proposed mine. We would like to understand how this will impact our communities. Although we have requested numerous times (over several years), AREVA and regulatory agencies have failed to consult adequately with the AD on this project. If we were part of an effective consultation process, we would have been aware when the decision to transport yellowcake to northern Saskatchewan was made.

Secondly, it is of concern that there are no details found in the EIS on the possible impacts this alternative method of transportation could cause to the environment and to the AD people. This review process has failed to provide us with any comprehensive information on what the impacts would be.

Email: [rrobillard@adnlc.ca](mailto:rrobillard@adnlc.ca) or [tgiroux@adnlc.ca](mailto:tgiroux@adnlc.ca)

Chief Joseph Custer Reserve # 201

Mailing address: Box 23126 South Hill PO, Prince Albert, Sask. S6V 8A7

Phone: (306) 765-2560 Fax: (306) 763-2973



We request that all the information on the impacts and mitigation measures put in place by AREVA regarding this specific method of transportation be sent to our office in a timely manner. This information would include answers to the following questions:

1. In the event of an Hercules C130 crash carrying barrels of yellowcake, how would AREVA clean up the dispersion of powder-like uranium concentrate in:
  - a. Lakes?
  - b. Rivers?
  - c. Marshes, bogs?
  - d. Land – tundra?
  - e. Land – forest?
  - f. How would seasons impact the ability for AREVA to clean it up (winter, spring, summer and fall)?
2. How effective would the clean-up be (effect of residual yellowcake)?
3. How quickly would the response time be? Does this depend on season?
4. How would this spill impact on the Athabasca Denesuline way of life and use of the land, ie. Ability to hunt, trap, fish, gather, practice cultural activities, etc.
5. How would a spill of this magnitude impact on migratory barren-ground caribou populations?
6. What is the proposed flight path of the aircraft? The AD would like to see a map.

These are all possible biophysical and socio-economic impacts of the project, and as such is in NIRB's mandate to understand all of these impacts in order to make recommendations and decisions on the project. Similarly, once we receive this information, the AD will then be able to review and provide "specific comments and concerns [we] may have on this aspect of the proposed project" to you, in order for you to understand all the impacts.

To reiterate, the AD do not support the transportation of yellowcake from Kiggavik mine to Points North, as referenced by the attached Motion (12 December 2013) by the Denesuline Né Né Land Corporation Board of Directors, and by the Resolution (13 December 2013) passed by the Athabasca Denesuline Negotiation Team, comprised of Elders, Leaders, and land-users.

We continue to invite AREVA and the regulatory agencies to the Athabasca Denesuline communities for community consultations. To date, we have not received any response. If you have any questions please do not hesitate to contact me at (306) 765-2560 or email: [rrobillard@adnnc.ca](mailto:rrobillard@adnnc.ca)

Regards,



Ron Robillard  
President – Athabasca Denesuline Né Né Land Corp.

Cc:

Diane Martens – AREVA Resources Canada Inc.

Tammy Van Lambalgen, AREVA Resources Canada Inc.

Caroline Ducros, Canadian Nuclear Safety Commission

Earl Evans – Chair BQCMB

Chief Earl Lidguerre – Fond du Lac Denesuline First Nation

Chief Rick Robillard – Black Lake Denesuline First Nation

Chief Bart Tsannie – Hatchet Lake Denesuline First Nation

Hugh Ikoe – Baker Lake Hunters Trappers Organization



provide comments to the Board regarding the project proposal at the time of the NIRB's screening and has participated on an on-going basis in the subsequent review.

Although the NIRB recognizes that the Athabasca Denesuline may wish to provide more specific comment with respect to this aspect of the project, the Board does not agree that this transportation option is a "significant change" to the original project proposal that was not previously included or accounted for in the review of this project proposal. As noted in the *Final Scope for the NIRB's Assessment of the Kiggavik Project Proposal Project*, issued in February 2011:

*In addition, two possibilities have been proposed for the transportation of the yellowcake from Kiggavik to southern Canada. 1) Direct air transport from Kiggavik to Churchill, or to Points North, Saskatchewan. The yellowcake would then be transported via rail (Churchill) or truck (Points North) to southern Canada. 2) Truck transport to Baker Lake and shipped with returning barges to Churchill. The yellowcake would then be transported via rail to its final destination.*

Similarly, in December 2011 when the Draft Environmental Impact Statement was submitted to the NIRB by AREVA, there were references throughout to this aspect of the project, including in the Summary of Project Activities (Tier 2, Volume 2, p. 20-7 of the Draft Environmental Impact Statement), Alternatives Assessment, Yellowcake Transport Alternatives (Tier 3, Appendix 2A, Section 13).

Reflecting this background, it is the Board's view that this aspect of the project has been included in the scope of the assessment since the receipt of the Kiggavik project proposal and does not constitute a significant change to the project as proposed, as screened, as scoped or as currently reviewed. The NIRB does however wish to encourage the Athabasca Denesuline to provide the Board with any specific comments and concerns it may have regarding this aspect of the proposed project and also encourages the Athabasca Denesuline to engage in further discussions with the Project Proponent and applicable regulatory agencies regarding questions or additional information you may require to develop subsequent submissions to the Board on these points.

If you have any questions or require further clarification from the Board regarding this matter, please feel free to contact me directly at (867) 983-4608 or via email at [rbarry@nirb.ca](mailto:rbarry@nirb.ca).

Sincerely,



Ryan Barry  
Executive Director  
Nunavut Impact Review Board



cc: Diane Martens, AREVA Resources Canada Inc.  
Tammy Van Lambalgen, AREVA Resources Canada Inc.  
Caroline Ducros, Canadian Nuclear Safety Commission  
Earl Evans, Beverly and Qamanirjuaq Caribou Management Board  
Chief Earl Lidguerre, Fond du Lac Denesuline First Nation  
Chief Rick Robillard, Black Lake Denesuline First Nation  
Chief Bart Tsannie, Hatchet Lake Denesuline First Nation  
Hugh Ikoe, Baker Lake Hunters' and Trappers' Organization  
Kiggavik Distribution List



**VIA EMAIL**

May 28, 2014

Mr. Ron Robillard  
Chief Negotiator, Athabasca Denesuline Negotiation Team  
Athabasca Denesuline Né Né Land Corporation  
Box 23126 South Hill  
Prince Albert SK S6V 8A7

Dear Mr. Robillard:

**Re: AREVA Resources Canada Inc. Kiggavik Project**

As you are aware, AREVA Resources Canada Inc. (AREVA) is currently revising its Environmental Impact Statement (EIS) for the proposed Kiggavik Project anticipating a Final EIS submission in September 2014 to the Nunavut Impact Review Board (NIRB). AREVA would like to acknowledge and respond to your letter addressed to the Nunavut Impact Review Board and communications with AREVA representatives to further engage with the Athabasca Denesuline to exchange information and better understand concerns and how the proposed project may impact the rights and interests of the members of the Hatchet Lake, Fond du Lac, and Black Lake Denesuline First Nations.

We have been advised that you will be the primary contact on behalf of these three Denesuline First Nations for the Kiggavik regulatory review. Attached are letters dated April 11, 2014 to the Chiefs of the above First Nation communities with this letter including the corrected distribution.

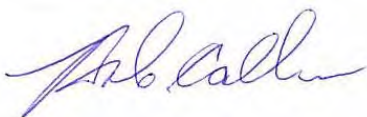
Invitations to meet with leadership included a proposed agenda of AREVA projects of possible interest with the option and request to advise if there was a preference to discuss the proposed Kiggavik project during a separate meeting. AREVA representatives continue to dialogue with leadership to coordinate a date and time to meet and will continue to correspond with you to coordinate the preferred communications for the different projects.

AREVA understands that the Athabasca Denesuline have concerns regarding the potential interactions of the Kiggavik Project with the Beverly and Qamanirjuaq Caribou Herds, as well as concerns with regards to the transportation of uranium concentrate to southern markets. Attached to this letter is a map that shows the project location in relation to the Beverly and Qamanirjuaq caribou herd annual ranges as presented in the Kivalliq Ecological Land Classification Map Atlas (Campbell et

al. 2012<sup>1</sup>) and the communities of Hatchet Lake, Fond du Lac, and Black Lake. AREVA acknowledges that caribou use the landscape without consideration of jurisdictional boundaries and we note that the attached figure represents that the proposed Kiggavik Project is outside known calving grounds, on the northern part of the Qamanirjuaq annual range and that the Project is unlikely to regularly interact with Beverly caribou whose annual range lies primarily west of Kiggavik. AREVA is aware that numerous parties support extended Beverly and Qamanirjuaq caribou ranges informed by traditional knowledge, satellite collars, and aerial surveys. AREVA has requested these shape files from the Beverly Qamanirjuaq Caribou Management Board for inclusion in the Kiggavik Project's final EIS and in particular, to inform the assessment for potential cumulative and transboundary effects.

AREVA is looking forward to discussing the Kiggavik Project and any community concerns in greater detail. You can contact me by telephone at (306) 343-4596 or by email at [Barry.McCallum@areva.ca](mailto:Barry.McCallum@areva.ca) to discuss a mutually agreeable time to meet. An alternate contact is Glenn Lafleur, Manager of Northern Affairs who can be reached by telephone at (306) 425-6885 or by email at [Glenn.Lafleur@areva.ca](mailto:Glenn.Lafleur@areva.ca). We look forward to your response.

Sincerely,

A handwritten signature in blue ink, appearing to read 'Barry McCallum', is shown above the printed name.

Barry McCallum  
Manager, Nunavut Affairs

Enclosures: Copy of April 11, 2014 AREVA Resources Canada Inc. Project Update Letter – Hatchet Lake  
Copy of April 11, 2014 AREVA Resources Canada Inc. Project Update Letter – Fond du Lac  
Copy of April 11, 2014 AREVA Resources Canada Inc. Project Update Letter – Black Lake  
Map of Beverly and Qamanirjuaq Caribou Herd Annual Ranges  
Attachment B: AREVA Resources Canada Inc. Kiggavik Project Update  
Kiggavik Draft Environmental Impact Statement Volume 10 – Accidents and Malfunctions  
Kiggavik Draft Environmental Impact Statement Appendix 10A – Transportation Risk Assessment  
Kiggavik Draft Environmental Impact Statement Appendix 10C – Emergency Response Plan

---

<sup>1</sup> Campbell, M. W., J.G. Shaw, C.A. Blyth. 2012. Kivalliq Ecological Land Classification Map Atlas: A Wildlife Perspective. Government of Nunavut, Department of Environment. Technical Report Series #1-2012. 274 pp.



cc: Tammy Van Lambalgen, AREVA Resources Canada Inc.  
Diane Martens, AREVA Resources Canada Inc.  
Glenn Lafleur, AREVA Resources Canada Inc.  
Ryan Barry, Nunavut Impact Review Board  
Chief Bart Tsannie, Hatchet Lake First Nation  
Chief Earl Lidguerre, Fond du Lac First Nation  
Chief Ricky Robillard, Black Lake First Nation  
Caroline Ducros, Canadian Nuclear Safety Commission  
Denis Schryer, Canadian Nuclear Safety Commission  
Hugh Ikoe, Baker Lake Hunters and Trappers Organization  
Earl Evans, Beverly Qamanirjuaq Caribou Management Board  
Ross Thompson, Beverly Qamanirjuaq Caribou Management Board





**Athabasca Denesuline Né Né Land Corporation**

18 August 2014

AREVA Resources  
Attn: Barry McCallum  
9204 – 817 – 45<sup>th</sup> Street West  
Saskatoon, SK S7K 3X5

**RE: AREVA KIGGAVIK URANIUM PROJECT – ATHABASCA DENESULINE, NIRB FILE  
#09MN003**

Mr. McCallum,

We have conducted a preliminary review of the information that was forwarded to us on May 28<sup>th</sup>, 2014 (via email) regarding the questions we raised in our letters dated December 4<sup>th</sup>, 2013 and January 14, 2014. After review, it is quite clear that there remains numerous unanswered questions, and the need for more clarification regarding our concerns.

One of the main concerns we have is that although the *Technical Appendix 10A – Transportation Risk Assessment* deals directly with the transportation of yellowcake, it does not include an assessment of impacts other than in the area near Baker Lake. For example:

1. The assessment did not use culturally or ecologically significant species for the Athabasca Region. *E.g.* the use of arctic ground squirrel and tundra swans is fine within the tundra, however, there is a need to consider species below the treeline as well. Especially since most of the flight path would be directly over this area. This is a major oversight.
2. There are no mention of the increased risk to Wollaston Lake, Hatchet Lake or Lake Athabasca in the discussion of impacts to large lakes.
3. There was no consideration of species that live in the area that are not migratory and semi-aquatic, *e.g.* beavers, muskrat, etc. The assessment assumes that a spill would occur in the tundra environment, and that the species would not be in the area for a longer term than four months, as discussed regarding tundra swan.

Email: [rrobillard@adnlc.ca](mailto:rrobillard@adnlc.ca) or [tgiroux@adnlc.ca](mailto:tgiroux@adnlc.ca)

Chief Joseph Custer Reserve # 201

Mailing address: Box 23126 South Hill PO, Prince Albert, Sask. S6V 8A7

Phone: (306) 765-2560 Fax: (306) 763-2973

4. In various calculations on the predicted release frequency on roads, AREVA used only numbers from the Kiggavik mine site to the airport in Nunavut (i.e. only 343 trucks per year over 10 km of road). In reality, there needs to be calculations based on Points North to La Ronge, SK in order to understand the increase frequency of risk in the Athabasca Denesuline (AD) territory.
5. There will be numerous water crossings on the road from Points North to La Ronge that needs to be considered. Currently, the risk assessment states that “there will be no water crossing on this road”.
6. There is also a need to include estimated frequency of release, fire and explosion during transportation of fuel and reagents via trucks for the Saskatchewan portion of the transportation. Not just for the Nunavut base.
7. Information on the storage location of containers at Points North is not included in the assessment.
8. There is no flight path shown in the assessment. How can flight corridors, and estimates on frequencies for crash of aircrafts into water be made (with a 1 km corridor) when no path is shown?
9. The assessment states that the highest risk is for an accident occurring during takeoff and climb. What about landing at Points North during inclement weather? Both Hatchet Lake Denesuline First Nation and Black Lake Denesuline First Nation are in the vicinity of the airport, however, there is no discussion on the increased risk to these communities.

The second major concern is of impacts to large and small lakes following a yellowcake spill:

1. The assessment states that the Uranium concentrations would exceed the Canadian Water Quality Guidelines for uranium, 3 times in the case of a moderate spill. AREVA proposes a drinking water advisory to prevent exposure until such time as the environment fully recovers. The AD fully understand the difficulty in cleaning up and remediating such a spill. In fact, yellowcake still seeps into Lake Athabasca at the former Uranium City mine, and the area is still radioactive. If lake, sediment and land clean-up were so easy, this area would have been cleaned up years ago, and the current attempt at clean-up would not be so difficult and onerous.
2. The AD are very concerned that the assessment states that a spill “could potentially affect the populations of aquatic plants, benthic invertebrates and fish species.”
3. Also, the assessment states that “small lake water quality will deteriorate to the extent that the water body loses its value as a habitat and will need remediation.” This is of major concern since it would impact on the AD use of the water and adjacent land.
4. AD are also concerned that “access of wildlife to the lake will be restricted if an accident occurs until a time when the water and sediment have been properly remediated.”
5. Exposure resulting from contaminated sediment was assumed to be of a long-term duration as residual yellowcake will persist in sediment for a long period of time. The SI values were exceeded in all scenarios for all aquatic species with respect to the lower reference dose. For higher reference doses, the SI values were exceeded in all cases for aquatic plants (leaves and roots) and benthic invertebrates. There was however no assessment of risk to non-migratory, semi-aquatic species, such as beavers and muskrats. These are of major cultural and ecological significance in the Athabasca Region.

The information on the crash and clean-up of yellowcake is also questionable.

1. There is no information on how weather would be a factor increasing aircraft crashes, it was only considered for truck crashes.
2. There is no information on how weather would delay responding to crashes and the spread of the yellowcake on the tundra (e.g. winds, storms).
3. There is no information on how yellowcake would be dispersed through a violent crash resulting in an explosion of the aircraft. The yellowcake would be airborne and subsequently dissipated throughout the area. The AD need to know how this would be remediated, and how far the yellowcake would be expected to travel in such a case.
4. How would an impact breaking through the lake ice and depositing yellowcake affect remediation efforts?

There is no information on how a spill would impact on the AD way of life and use of the land, i.e. ability to hunt, trap, fish, gather, and practice cultural activities.

1. There are numerous impacts to the environment that are described in the assessment, however, the AD are not considered.
2. AREVA needs to revise the Transportation Risk Assessment in order for it to be comprehensive and accurate. Impacts to the AD need to be considered.

The assessment of impact to caribou is not complete.

1. There is no information on the impact of inhalation of yellowcake powder by caribou when feeding. What would be the risk of radiation in this case? How does this impact the meat?
2. What about consuming lichen that has taken up radiation/uranium. Lichen is known to absorb all nutrients from the air, including radioactivity. This is the caribou's primary food source, however there is no mention of this. There is only mention of caribou exposed by ingesting soil.
3. How is dispersion of yellowcake powder over the landscape monitored? This would influence the number of days that the caribou would be in contact with the radiation.
4. The assessment does not address possible changes in caribou behaviour, migration route, stress impacts, etc. that a spill, remediation, quarantine may have on the caribou.

The risks and impacts associated with a transportation accident are far greater than what we are willing to risk. Our land and environment is priceless and necessary for our way of life. Therefore, the AD do not support the transportation of yellowcake from Kiggavik mine to Points North, as referenced by the Motion (12 December 2013) by the Denesuline Né Né Land Corporation Board of Directors, and by the Resolution (13 December 2013) passed by the Athabasca Denesuline Negotiation Team, comprised of Elders, Leaders, and land-users. In addition to these resolutions, a new motion was passed at the Prince Albert Grand Council - Athabasca Region Sector Meeting, held in Wollaston Lake on July 4<sup>th</sup>, 2014. This motion is attached and was passed by representatives from all three Athabasca Denesuline communities and one Manitoba Dene community.

If you have any questions please do not hesitate to contact me at (306) 765-2560 or email: [rrobillard@adnlc.ca](mailto:rrobillard@adnlc.ca).

Regards,

A handwritten signature in black ink, appearing to read 'R. Robillard', is shown within a rectangular frame.

Ron Robillard  
President – Athabasca Denesuline Né Né Land Corp.

Cc:

Diane Martens – AREVA Resources Canada Inc.  
Tammy Van Lambalgen, AREVA Resources Canada Inc.  
Caroline Ducros, Canadian Nuclear Safety Commission  
Earl Evans – Chair BQCMB  
Chief Earl Lidguerre – Fond du Lac Denesuline First Nation  
Chief Rick Robillard – Black Lake Denesuline First Nation  
Chief Bart Tsannie – Hatchet Lake Denesuline First Nation  
Hugh Ikoe – Baker Lake Hunters Trappers Organization  
Chief Felix Lockhart – Lutsel K'e Dene First Nation  
Chief Leo Denttanikkeaze – Northlands First Nation (Lac Brochet, MB.)  
Ryan Barry – Nunavut Impact Review Board  
Vice-Chief Joseph Tsannie Jr. – Prince Albert Grand Council





VIA EMAIL

August 28, 2014

Mr. Ron Robillard  
Chief Negotiator, Athabasca Denesuline Negotiation Team  
Athabasca Denesuline Né Né Land Corporation  
Box 23126 South Hill  
Prince Albert SK S6V 8A7

Dear Mr. Robillard:

**Re: AREVA Resources Canada Inc. Kiggavik Project**

AREVA is currently revising its Environmental Impact Statement (EIS) for the proposed Kiggavik Project anticipating a Final EIS submission to the Nunavut Impact Review Board (NIRB) by the end of September 2014. Questions and concerns raised by the Athabasca Denesuline Ne Ne Land Corporation throughout the NIRB-led review of the Kiggavik Project have been considered in the preparation of the FEIS, most notably in the inclusion of an additional, extended road and rail transportation risk assessment to accompany the existing transportation risk assessment FEIS Tier 3 Technical Appendix 10A. The transportation risk assessment has been updated to evaluate potential impacts related to accident scenarios along the proposed flight path, including a crash into Wollaston Lake, and the Spill Response Plan has been updated to describe tactics used in the remediation of incidents in remote wilderness locations.

Similar to all other projects transporting uranium ore concentrates, AREVA will require an Emergency Response Assistance Plan (ERAP) for the Kiggavik Project that is reviewed and approved by Transport Canada. Specifying emergency response responsibilities, recovery procedures, and available resources, the plan is reviewed annually and updated every five years at a minimum.

AREVA remains committed to meaningful engagement with aboriginal and other stakeholders that are potentially affected by AREVA's projects. As stated in previous correspondence, AREVA would be pleased to meet with Athabasca Denesuline leadership at a mutually agreeable time to discuss transportation and other concerns, the content and results of the latest road and rail transportation risk assessment, and information sharing on the creation and effectiveness testing of current and future AREVA ERAP plans. Engagement on the transportation of uranium concentrate goes beyond an environmental assessment process into licensing and possible project operations.

AREVA is open to meeting dates convenient to the Athabasca Denesuline Ne Ne Corporation and suggest the week of November 10, 2014 as a possible meeting time. This would allow time for review of the additional transportation risk assessment that will be submitted to the NIRB in September and made available to all interveners in October, 2014. If you have any additional questions or wish to meet at a different time, you can contact me by telephone at (306) 343-4596 or by email at [Barry.McCallum@areva.ca](mailto:Barry.McCallum@areva.ca).

Sincerely,

A handwritten signature in blue ink, appearing to read 'Barry McCallum', is written over a light blue rectangular background.

Barry McCallum  
Manager, Nunavut Affairs

cc: Tammy Van Lambalgen, AREVA Resources Canada Inc.  
Diane Martens, AREVA Resources Canada Inc.  
Glenn Lafleur, AREVA Resources Canada Inc.  
Ryan Barry, Nunavut Impact Review Board  
Chief Bart Tsannie, Hatchet Lake First Nation  
Chief Earl Lidguerre, Fond du Lac First Nation  
Chief Ricky Robillard, Black Lake First Nation  
Chief Felix Lochart, Lutsel K'e Dene First Nation  
Chief Leo Denttanikkeaze, Northland Dene First Nation  
Vice Chief Joseph Tsannie Jr., Prince Albert Grand Council  
Caroline Ducros, Canadian Nuclear Safety Commission  
Denis Schryer, Canadian Nuclear Safety Commission  
Hugh Ikoe, Baker Lake Hunters and Trappers Organization  
Earl Evans, Beverly Qamanirjuaq Caribou Management Board  
Ross Thompson, Beverly Qamanirjuaq Caribou Management Board

## 2 Lutsel Ke First Nation

---

Lutsel Ke 1. Letter from Diane Martens, Regulatory Coordinator, ARC to Sonya Almond, LKDFN “Request for Community Engagement on Potential Impacts of Proposed Kiggavik Project” September 25, 2009; in Appendix 3A: Engagement Documentation.

Lutsel Ke 2. Letter from Tsatsiye Catholique, LKDFN to Diane Martens, ARC “Invitation to visit Lutsel K’e, NT for community update”, May 20, 2011; in Appendix 3A: Engagement Documentation.

Lutsel Ke 3. Letter from Diane Martens, Regulatory Coordinator, ARC to Tsatsiye Catholique, LKDFN “Community Update on AREVA Resources Canada Inc.’s Proposed Kiggavik Project” July 13, 2011; in Appendix 3A: Engagement Documentation.

Lutsel K’e 4. Poster for Open House in Lutsel K’e, July 23, 2012, In Appendix 3A: Engagement Documentation







September 25, 2009

Sonya Almond  
AWLED Manager  
Lutsel K'e Dene First Nation  
PO Box 28  
Lutsel K'e, N.T. X0E 1A0  
Ph: (867) 370-3197  
Fax: (867) 370-3143  
sonyalmond@hotmail.com

Dear Ms. Sonya Almond:

**Re: Request for Community Engagement on Potential Impacts of Proposed Kiggavik Project**

AREVA Resources Canada Inc. (AREVA) would like to acknowledge and respond to the letter sent by the Lutsel K'e Dene First Nation (LKDFN) Wildlife, Lands and Environment Division (WLED) to the Nunavut Impact Review Board (NIRB) during project screening on February 17, 2009. In this letter, LKDFN states that the well-being of members of the LKDFN may be affected by the Kiggavik Project. The letter further states that caribou users outside of Nunavut could be adversely affected by the project due to the migratory nature of caribou. The LKDFN echoes many concerns raised by Indian Affairs and Northern Development and stresses the importance of public engagement, participation and support. AREVA acknowledges these concerns and would like to extend this invitation to respectfully engage with your community and learn more about how our proposed Project may impact the rights and interests of the LKDFN.



## REGULATORY OVERVIEW

AREVA submitted mine development applications and a Project Proposal to authorizing agencies on November 14, 2008 with the intent of initiating the Nunavut impact review process on the Kiggavik Project. The NIRB screened the Project Proposal and submitted a screening decision to the Honourable Minister Chuck Stahl, Minister of Indian Affairs and Northern Development, on March 13, 2009 recommending a review.

## RESPECT FOR THE CARIBOU AND CARIBOU USERS

Understanding that caribou migrate across political boundaries and that they are central to the identity of traditional caribou harvesting communities, AREVA has been attending Beverly Qamanirjuaq Caribou Management Board (BQCMB) meetings since 2006 to communicate project activities with harvesting communities and provincial and territorial governments and also to listen to the Board's concerns and insights. The community of Lutsel K'e has been represented at most of the meetings of the BQCMB that AREVA attended. It is AREVA's intent to design a project that respects and protects ecosystem integrity. By minimizing and mitigating impacts to caribou and working collaboratively with stakeholders we believe the Kiggavik Project can be carried out without adversely affecting caribou users within or outside the boundaries of the Nunavut Settlement Area. Public participation is an essential component of AREVA's sustainable development model and we are committed to building stakeholder relationships based on trust and transparency.

Given your concern over the Kiggavik Project and our desire to understand the potential impacts of the Kiggavik Project on rights and interests of the LKDFN, we would like to learn how the LKDFN would prefer to be engaged. We would be pleased to meet with the Chief and Council for the purpose of introducing our Project and to establish a relationship. We would also be prepared to conduct a workshop with the WLED and/or community members. A workshop format would allow for discussion on what project information is desired by the LKDFN, identify potential impacts to LKDFN and their significance and how to ensure LKDFN has been heard.

Sonya Almond, AWLED Manager, LKDFN

Re: Request for Community Engagement on Potential Impacts of Proposed Kiggavik Project

September 25, 2009 – Page 3



Please advise AREVA on how to carry forward with engagement with the community of Lutsel K'e. We would like to build a positive relationship based on mutual respect and cooperation.

I will follow up this letter with a telephone call so that we may discuss our invitation further. In the meantime, please do not hesitate to contact me with any questions or concerns. Thank you for your consideration.

Sincerely,

A handwritten signature in black ink, appearing to read 'Diane Martens'.

Diane Martens  
Regulatory Coordinator  
Regulatory and Legal Affairs  
AREVA Resources Canada Inc.  
Tel: (306) 343-4042  
diane.martens@areva.ca

Cc:

Lutsel K'e Dene First Nation Chief and Council  
Akaitcho IMA Implementation Office





## Wildlife, Lands and Environment Department

Lutsel K'e Dene First Nation  
P.O. Box 28  
Lutsel K'e, N.T.  
X0E 1A0

Telephone: (867) 370-3197  
Fax: (867) 370-3143

May 20, 2011

Diane Martens  
Regulatory Coordinator  
AREVA Resources Canada Inc.  
P.O. Box 9204, 1-2345 Ave C North  
Saskatoon, SK S7K 3X5  
Tel: 306-343-4042  
Fax: 306-343-4044  
[diane.martens@areva.ca](mailto:diane.martens@areva.ca)

### **Re: Invitation to visit Lutsel K'e, NT for community update**

I was informed by a few community members that your organization has not given an update regarding your "Kiggavik" project for quite awhile, so this letter is an invitation for you to come to our community and update the membership and give some insight while hearing the concerns and comments of the people.

While this project is based in Nunavut, we believe that effects of this project could affect our traditional territory known as Thaidene Nene. We request that you come to our community and give answers to the questions regarding this subject and hopefully the membership will have a better perspective into handling this issue within the community.

If you have any questions or comments, feel free to contact me at [lkdfn\\_lands@yahoo.com](mailto:lkdfn_lands@yahoo.com) or by phone at (867)370-3197.

Marci Cho,

Tsatsiye Catholique  
Director Wildlife, Lands and Environment  
Lutsel K'e Dene First Nation  
Box 28  
Lutsel K'e, NT X0E 1A0  
Canada  
867-370-3197 wk.



867-370-3143 fx.  
lkdfn\_lands@yahoo.com



VIA EMAIL

July 13, 2011

Mr. Tsatsiye Catholique  
Director Wildlife, Lands and Environment  
Lutsel K'e Dene First Nation  
Box 28 Lutsel K'e, NT  
X0E 1A0, CANADA

Dear Mr. Tsatsiye Catholique:

**Re: Community Update on AREVA Resources Canada Inc. Proposed Kiggavik Project**

Thank you for the letter dated May 20, 2011 and invitation to visit Lutsel K'e. AREVA would be pleased to visit your community to provide an update on the proposed Kiggavik Project, answer questions you may have and listen to the concerns and comments your community members offer.

We suggest an open house where members of the community can ask company representatives' questions about the proposed project and community concerns can be recorded and considered. If you like, we could meet with the Chief and Council, the Department of Wildlife, Lands and Environment and/or community Elders prior to a community open house. In setting a date for a community open house please identify any major community events in the coming months that AREVA should consider.

AREVA firmly believes that by minimizing and mitigating impacts to caribou and working collaboratively with stakeholders we can design a project that can be carried out without adversely affecting caribou users within or outside the boundaries of the Nunavut Settlement Area. We would like to hear and consider your feedback and we will continue to communicate with you on the details of preferred formats and dates for AREVA to provide a community update. Please do not hesitate to contact me at 306-343-4042 or [diane.martens@areva.ca](mailto:diane.martens@areva.ca) to discuss further.

Yours truly,

A handwritten signature in blue ink, appearing to read 'diane', is written over a faint, larger blue ink signature that is partially obscured.

Diane Martens  
Regulatory Coordinator

**AREVA Resources Canada Inc.**

P.O. Box 9204 - 817 - 45<sup>th</sup> Street West - Saskatoon, SK S7K 3X5 - CANADA  
Tel: 1 (306) 343-4500 - Fax: 1 (306) 653-3883 - Web Site: [www.areva.ca](http://www.areva.ca)

# Kiggavik Project in Nunavut

## Open House in Lutsel K'e, NT



AREVA Resources Canada invites you to an open house to learn more about uranium mining and milling and the proposed Kiggavik Project located 80km west of Baker Lake, in the Kivalliq Region of Nunavut. Come and enjoy some refreshments with us and meet our team. You may even take home a door prize. We are here to answer your questions and to ask for your comments on the proposed project.

### Contact us for more information:

- + Call us: 1.306.343.4596
- + Email us: [barry.mccallum@areva.ca](mailto:barry.mccallum@areva.ca)

- + Check our project blog:

[www.Kiggavik.ca](http://www.Kiggavik.ca)

- + Check our website:

[www.arevaresouces.ca](http://www.arevaresouces.ca)

Location	Date	time	Venue
Lutsel K'e, NT	July 23, 2012	1:30pm to 6:00pm	Zah Lochart Hall





### **3 Manitoba Dene (Northlands, Denesuline in Lac Brochet and Tadoule Lake**

---

MB Dene 1. Letter from Barry McCallum, Manager Nunavut Affairs to Chief Walter Duck, Sayisi Dene First Nation “AREVA Resources Canada Inc. Proposed Kiggavik Project”. May 28, 2014: in Appendix 3A: Engagement Documentation.

MB Dene 2. Letter from Barry McCallum, Manager Nunavut Affairs to Chief Denttanikkeaze, Northlands Denesuline First Nation “AREVA Resources Canada Inc. Proposed Kiggavik Project”. May 28, 2014: in Appendix 3A: Engagement Documentation.

MB Dene 3. Kiggavik Project – Open House Report, Tadoule Lake, Manitoba, AREVA Resources Canada Inc. June 25, 2014: in Appendix 3A: Engagement Documentation.

MB Dene 4. Letter from Glenn Lafleur, Manager Northern Affairs, AREVA Resources Canada Inc. to Chief Denttanikkeaze, Northlands Denesuline First Nation “Employment Opportunities for Lac Brochet Band Members”. June 2, 2014: in Appendix 3A: Engagement Documentation.

MB Dene 5. Letter from Barry McCallum, Manager Nunavut Affairs to Chief Ernie Bussidor, Sayisi Dene First Nation “AREVA Resources Canada Inc. Proposed Kiggavik Project”. September 8, 2014, 2014: in Appendix 3A: Engagement Documentation.

MB Dene 6. Letter from Barry McCallum, Manager Nunavut Affairs to Chief Denttanikkeaze, Northlands Denesuline First Nation “AREVA Resources Canada Inc. Proposed Kiggavik Project”. September 8, 2014: in Appendix 3A: Engagement Documentation





**VIA EMAIL and COURIER**

May 28, 2014

Chief Walter Duck  
Sayisi Dene First Nation  
General Delivery  
Tadoule Lake, MB  
R0B 2C0

Dear Chief Duck,

**Re: AREVA Resources Canada Inc. Proposed Kiggavik Project**

AREVA Resources Canada Inc. (AREVA) is proposing to develop the Kiggavik Project, a new uranium mine and mill facility, 80 kilometres west of the Hamlet of Baker Lake in the Kivalliq Region of Nunavut. We are currently revising our Environmental Impact Statement (EIS) for the proposed project anticipating a Final Environmental Impact Statement submission in September 2014 to the Nunavut Impact Review Board (NIRB).

AREVA has been attending the Beverly Qamanirjuaq Caribou Management Board meetings since 2006. During the fall 2013 and spring 2014 meetings, the Tadoule Lake representative has requested AREVA visit the community to share Project information, respond to questions, and listen to and consider concerns regarding the proposed Kiggavik Project. AREVA would like to further engage with the Sayisi Dene First Nation.

It is AREVA's intention to design a project that minimizes effects to caribou and to ecosystem integrity in general, so that caribou users will not be adversely affected within or outside the Nunavut Settlement Area. Attached is a map showing the project location, the Beverly and Qamanirjuaq caribou herd annual ranges as determined by the Government of Nunavut and the communities of Lac Brochet and Tadoule Lake, Manitoba. AREVA acknowledges that caribou use the landscape without consideration of jurisdictional boundaries and we note that the attached figure represents that the proposed Kiggavik Project is on the northern Qamanirjuaq annual range and that the Project is unlikely to regularly interact with Beverly caribou whose annual range lies primarily west of Kiggavik. AREVA is aware that numerous parties support extended Beverly and Qamanirjuaq caribou ranges informed by traditional knowledge, satellite collars, and aerial surveys. AREVA has requested these shape files from the BQCMB for inclusion in the Kiggavik final EIS and in particular, to inform the

assessment for potential cumulative and transboundary effects. We are pleased to discuss the caribou assessment, potential effects, access road management or other suggested topics of interest or concern. AREVA would like to suggest a meeting with leadership and/or community members. Please advise how to move forward with engagement with the Sayisi Dene First Nation.

Please find attached the Draft Environmental Impact Statement Popular Summary as well as a Project Fact Sheet to provide you with information regarding our proposed project. The entire draft EIS is available on NIRB's FTP website at <http://ftp.nirb.ca>. Further information is also available on our Kiggavik website at [www.kiggavik.ca](http://www.kiggavik.ca). Also included, which might be of interest, is the Eastern Athabasca Regional Monitoring Program 2012 Community Report, which is a summary of the results of the program established to monitor the safety of traditionally harvested country foods in seven communities in northern Saskatchewan, as well as the Athabasca Working Group Environmental Monitoring Program 10-Year summary.

AREVA would like to propose the week of June 23 to visit your community. I will follow up with a phone call to finalize dates, agenda items for discussion, and any required logistics. In the meantime, please do not hesitate to contact me by phone at (306) 343-4596 or by email at [barry.mccallum@areva.ca](mailto:barry.mccallum@areva.ca). I look forward to your response.

Sincerely,

A handwritten signature in blue ink, appearing to read 'Barry McCallum', is written over a light blue rectangular background.

Barry McCallum  
Manager, Nunavut Affairs

Enclosures: Map of Caribou Distribution Overview in Relation to Kiggavik Project Area  
Kiggavik Project Environmental Impact Statement Popular Summary  
Kiggavik Project Fact Sheet  
Eastern Athabasca Regional Monitoring Program 2012 Community Report  
Athabasca Working Group Environmental Monitoring Program 10 Year Summary

cc: Tammy Van Lambalgen, AREVA  
Diane Martens, AREVA  
Ryan Barry, NIRB  
Tara Arko, NIRB  
Earl Evans, BQCMB  
Ross Thompson, BQCMB





**VIA EMAIL and COURIER**

May 27, 2014

Chief Leo Denttanikkeaze  
Northlands Denesuline First Nation  
Box 120  
Lac Brochet, MB  
R0B 2E0

Dear Chief Denttanikkeaze,

**Re: AREVA Resources Canada Inc. Proposed Kiggavik Project**

AREVA Resources Canada Inc. (AREVA) is proposing to develop the Kiggavik Project, a new uranium mine and mill facility, 80 kilometres west of the Hamlet of Baker Lake in the Kivalliq Region of Nunavut. We are currently revising our Environmental Impact Statement (EIS) for the proposed project anticipating a Final Environmental Impact Statement submission in September 2014 to the Nunavut Impact Review Board (NIRB).

AREVA has been attending the Beverly Qamanirjuaq Caribou Management Board meetings since 2006. During the fall 2013 and spring 2014 meetings, the Lac Brochet representative has requested AREVA visit the community to share Project information, respond to questions, and listen to and consider concerns regarding the proposed Kiggavik Project. AREVA would like to further engage with the Northlands Denesuline First Nation.

It is AREVA's intention to design a project that minimizes effects to caribou and to ecosystem integrity in general, so that caribou users will not be adversely affected within or outside the Nunavut Settlement Area. Attached is a map showing the project location, the Beverly and Qamanirjuaq caribou herd annual ranges as determined by the Government of Nunavut and the communities of Lac Brochet and Tadoule Lake, Manitoba. AREVA acknowledges that caribou use the landscape without consideration of jurisdictional boundaries and we note that the attached figure represents that the proposed Kiggavik Project is on the northern Qamanirjuaq annual range and that the Project is unlikely to regularly interact with Beverly caribou whose annual range lies primarily west of Kiggavik. AREVA is aware that numerous parties support extended Beverly and Qamanirjuaq caribou ranges informed by traditional knowledge, satellite collars, and aerial surveys. AREVA has requested these shape files from the BQCMB for inclusion in the Kiggavik final EIS and in particular, to inform the

**AREVA Resources Canada Inc.**

P.O. Box 9204 – 817 - 45<sup>th</sup> Street West – Saskatoon, SK S7K 3X5 – CANADA  
Tel: 1 (306) 343-4500 – Fax: 1 (306) 653-3883 – Web Site: [www.aveva.ca](http://www.aveva.ca)



assessment for potential cumulative and transboundary effects. We are pleased to discuss the caribou assessment, potential effects, access road management or other suggested topics of interest or concern. AREVA would like to suggest a meeting with leadership and/or community members. Please advise how to move forward with engagement with the Northlands Denesuline First Nation.

Please find attached the Draft Environmental Impact Statement Popular Summary, as well as a Project Fact Sheet to provide you with information regarding our proposed project. The entire draft EIS is available on NIRB's FTP website at <http://ftp.nirb.ca>. Further information is also available on our Kiggavik website at [www.kiggavik.ca](http://www.kiggavik.ca). Also included, which might be of interest, is the Eastern Athabasca Regional Monitoring Program 2012 Community Report which is a summary of the results of the program established to monitor the safety of traditionally harvested country foods in seven communities in northern Saskatchewan as well as the Athabasca Working Group Environmental Monitoring Program 10-Year summary.

We understand that dates during the weeks of June 16 or June 23 are agreeable times for a possible meeting with a focus on environmental performance in Saskatchewan, the predicated environmental effects for the proposed Kiggavik Project, and expectations for a possible relationship between AREVA and Lac Brochet. AREVA would like to propose the week of June 23 for us to visit your community. I will follow up with a phone call to finalize dates, agenda items for discussion, and any required logistics. In the meantime, please do not hesitate to contact me by phone at (306) 343-4596 or by email at [barry.mccallum@areva.ca](mailto:barry.mccallum@areva.ca). I look forward to your response.

Sincerely,

A handwritten signature in blue ink, appearing to read 'Barry McCallum'.

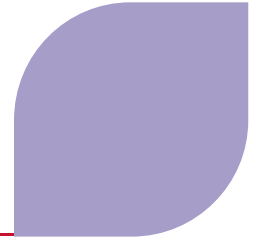
Barry McCallum  
Manager, Nunavut Affairs

Enclosures: Map of Caribou Distribution Overview in Relation to Kiggavik Project Area  
Kiggavik Project Environmental Impact Statement Popular Summary  
Kiggavik Project Fact Sheet  
Eastern Athabasca Regional Monitoring Program 2012 Community Report  
Athabasca Working Group Environmental Monitoring Program 10 Year Summary



cc: Tammy Van Lambalgen, AREVA  
Diane Martens, AREVA  
Ryan Barry, NIRB  
Tara Arko, NIRB  
Earl Evans, BQCMB  
Ross Thompson, BQCMB  
Joe Danttouze, Lac Brochet





---

# **Kiggavik Project**

Open House Report

Tadoule Lake, Manitoba

June 25, 2014





## **Preface**

**Note of Thanks to Tadoule Lake:** This report summarizes what the Kiggavik Project team heard and learned in Tadoule Lake during the Open House. The team appreciated the willingness to share information and the way in which team members were welcomed in your community. If you feel this report has not accurately recorded these events, please contact us.

Copies of this report are available from the AREVA Baker Lake office, by request at 1-867-793-2000, and online at [www.arevaresources.ca](http://www.arevaresources.ca).

By:

AREVA Resources Canada Inc.

P.O. Box 9204

SASKATOON, SK.

S7K 3X5

## Table of Contents

1	Introduction.....	1-1
2	Open House .....	2-1
2.1	Invitation .....	2-1
2.2	Participation .....	2-1
2.3	Format .....	2-1
3	Community Feedback.....	3-1
3.1	Comment Forms .....	3-1
3.2	Questions and Comments.....	3-2
4	Next Steps.....	4-1

## Attachments

Attachment A	Invitation Letter .....	A-1
Attachment B	Sign In Sheets .....	B-1
Attachment C	Posters and Maps.....	C-1
Attachment D	Survey / Comment Forms .....	D-10
Attachment E	Photographs .....	E-1
Attachment F	Presentation .....	F-1

## List of Tables

Table 3.2-1	Questions and Responses.....	3-2
-------------	------------------------------	-----

## List of Figures

Figure A- 1	Invitation Letter, May 28, 2014.....	A-1
Figure B- 1	Sign In Sheet (1 of 3).....	B-1
Figure B- 2	Sign In Sheet (2 of 3).....	B-2
Figure B- 3	Sign In Sheet (3 of 3).....	B-3
Figure C- 1	Terrestrial Wildlife (Display Panel) .....	C-1
Figure C- 2	Cumulative Effects (Display Panel).....	C-2
Figure C- 3	Kiggavik Poster Book Introduction .....	C-3
Figure C- 4	Caribou Distribution Overview in Relation to Kiggavik Project Area .....	C-4
Figure C- 5	Beverly & Qamanirjuaq Range and Calving Areas.....	C-5
Figure C- 6	Beverly Qamanirjuaq Range with Exploration and Mining Projects .....	C-6
Figure C- 7	Beverly & Qamanirjuaq Range and Calving Areas with Active Mine Sites .....	C-7
Figure C- 8	Beverly & Qamanirjuaq Range with Fall Migration .....	C-8
Figure C- 9	Beverly & Qamanirjuaq Range with Spring Migration.....	C-9
Figure D- 1	Survey Form (1 of 3).....	D-1
Figure D- 2	Survey Form (2 of 3).....	D-2
Figure D- 3	Survey Form (3 of 3).....	D-3
Figure E- 1	Photograph - Tadoule Lake Open House (1 of 3) .....	E-1
Figure E- 2	Photograph - Tadoule Lake Open House (2 of 3) .....	E-1
Figure E- 3	Photograph - Tadoule Lake Open House (3 of 3) .....	E-2

# 1 Introduction

---

AREVA Resources Canada Inc. (AREVA) submitted mine development applications and a project proposal to authorizing agencies on November 14, 2008 to initiate the Nunavut project review process on the Kiggavik Project. The Kiggavik Project is a proposed uranium mine (five deposits), a mill, and associated infrastructure located approximately 80 km west of the hamlet of Baker Lake in the Kivalliq region of Nunavut. The Kiggavik Project received a positive conformity determination about the Keewatin Regional Land Use Plan by the Nunavut Planning Commission (NPC) in January 2009. Two months later, the Nunavut Impact Review Board (NIRB) recommended a screening review to the Minister of Aboriginal Affairs and Northern Development Canada. In February 2010, the Minister announced a public review for the project under the Article 12 of the Nunavut Land Claims Agreement in Kiggavik activities.

Public participation is an essential component of AREVA's sustainable development model, and one of the five guiding principles used by the NIRB. AREVA and the Kiggavik team want to establish stakeholder relationships based on trust and transparency. AREVA recognizes a responsibility to people in the areas in which they operate, and is committed to the meaningful involvement of people in the Kivalliq area in Kiggavik Project activities, as well as interested parties outside the Kivalliq region. AREVA is committed to providing information on the project, and wants to hear what the people of the Kivalliq region and other interested persons think about the proposed Kiggavik Project.

AREVA has been engaging the public about the Kiggavik Project since 2005 through an information office, liaison committees, meetings with stakeholders and open house community meetings. The majority of community engagement activities have been in the Kivalliq region of the Nunavut Settlement Area.

AREVA has engaged communities outside the Nunavut settlement area including communities in the Northwest Territories, Saskatchewan and Manitoba, which share caribou herds with Nunavut and have interests in potential transboundary impacts on caribou.

At the request of the Chief of the Sayisi Dene First Nation, AREVA held a public meeting on the Kiggavik Project in Tadoule Lake on June 25, 2014.



The Open House had the following Objectives:

- Introduce AREVA project team members to the community
- Provide information on the proposed Kiggavik Project
- Explain that the Kiggavik Project is working on submitting the Final Environmental Impact Statement (FEIS) and to answer questions related questions
- Discuss and receive input on the Environmental Assessment conclusions with respect to effects on migratory caribou herds
- Encourage public input and participation

This report summarizes the results of the June 2014 Open House in Tadoule Lake Manitoba. The report includes information presented and made available and feedback received from the community.

## **2 Open House**

---

### **2.1 Invitation**

A letter offering to meet in Tadoule Lake was sent to the Chief on May 27, 2014 (Attachment A). In follow-up discussion, the Chief suggested a community meeting follow a meeting with Chief and Council. The Chief offered to make the community notifications.

At the beginning of the Open House, an AREVA representative went on the community radio announcing the Open House and inviting people to participate.

### **2.2 Participation**

A total of 56 participants were recorded as attending the open house session. The majority stayed for most of the meeting. The sign-in sheets are in Attachment B. Photos of the event are provided in Attachment E.

### **2.3 Format**

The format was an open house concept, using display panel posters of Terrestrial Wildlife and Cumulative Effects as discussion points. Three AREVA team members were present to answer questions, and to listen to and record any concerns. This allowed for one-on-one interaction between participants and AREVA representatives.

Interactive discussions were held around maps of the caribou herd distributions. The posters and maps used are provided in Attachment C. A translator was available throughout the open house.

Handout material available during the open house included the Popular Summary of the DEIS, a package of the DEIS series of posters and a Kiggavik Project Handout.

Refreshments were available and there were door prizes.

Some participants completed comment forms. A summary follows in Section 3.1.

## 3 Community Feedback

---

### 3.1 Comment Forms

Comment forms were available and three filled the out. Results are summarized below. Comment forms are provided in Attachment D.

1. What is your main interest regarding uranium mining in Nunavut? This small sampling indicates Wildlife generates the most concern followed by General Environment.

- a. General Environment – 2
- b. Wildlife (including caribou) – 3
- c. Jobs and Careers – 1
- d. Community Impacts – 1
- e. Human Health – 1
- f. Infrastructure (road, bridge) – 1
- g. Other (please state) – How and if this has a negative impact on the land and wildlife (1 was added to both General Environment and Wildlife based on this comment)

2. Did you learn something new about Uranium?

Yes (2)      No (1)

3. Did you learn something new about the proposed Kiggavik Project?

Yes (3)      No (0)

4. Is there any other information that you would like to have about uranium and/or the proposed Kiggavik Project?

Yes (1)      No (1)

### I would like more information on...

- How this will affect our wildlife?
- More information packages for community.
- What is uranium? I know it's related to cancer.

### Comments:

- No comments.
- Come to the community of Tadoule Lake again.
- Information packages for the school children.

## 3.2 Questions and Comments

These were recorded one-on-one by members of the AREVA team in conversation with open house attendees.

**Table 3.2-1 Questions and Responses**

<b>Nuclear &amp; Uranium (3 Comments)</b>	
The rest of my people will be against it because it's nuclear. Look at the miners in Saskatchewan with all the birth defects?	None recorded.
We do not support the development and especially uranium development.	None recorded.
The rivers run to and through our territory and the nuclear ingredients wouldn't be good.	None recorded.
<b>Project Description (1 Comment)</b>	
Why not mine diamond instead of uranium?	The mine is not approved yet. You can comment and be heard. We operate at a higher standard than other mines.
<b>EA Methodology &amp; Process (1 Comment)</b>	
The Inuit made a deal with the devil on this. 1 Billion (Popular Summary). People moved here because of the caribou. But it's too late. It's already here.	The project is currently in an environment review. You can provide your comments to us or to NIRB to have them part of the review. We are here to listen.
<b>Socio-Economic (4 Comments)</b>	
Why are you here?	To discuss the Kiggavik Project and caribou.
Asked about pick-up points in Tadoule Lake (employment).	Tadoule Lake is not a proposed pick-up point.

Why are you talking to us when there is disputed land? Lots of discussion over N. 60 negotiations.	None recorded.
Born in Churchill. This is my land. I want my words to be recorded. I believe that you should stay overnight and visit with the people and communicate the story.	None recorded.
<b>Biophysical Environment (5 Comments)</b>	
If you put a mine in calving ground, the caribou might change their calving ground.	None recorded.
What about global warming?	None recorded.
What's going to happen when you build a mine in the middle of calving ground? Heart of calving ground? 100 km is not far. They calve in this general area. We'll never see caribou around here. I know it's going to affect us.	The proposed project is outside of the calving grounds.
Is Baker Lake downstream?	Yes.
Caribou come down around September-Oct.	Looking over map. We will shut down during caribou migrations through the site.
<b>Human Environment (4 Comments)</b>	
Do you go hunting on this land?	We are hearing that 60 miles is too close to calving ground. We are here to hear your concern.
There are guys that die from cancer from working at these mines.	None recorded.
Wind took a bottle from Baker to Rankin. The open pit mine will poison everyone down to Churchill. Dene uses the land north to the west.	None recorded.
It is because of my grandchildren that I am cautious. I want to be sure and I want them to have a good life.	None recorded.
<b>Negotiated Agreements (1 Comment)</b>	
Do not want meetings behind our back. Churchill to Arizona. We shouldn't discuss until the claim settled.	None recorded.
<b>Other Operations (1 Comment)</b>	
I do not support the mine. I heard there is bad performance.	None recorded.

The 20 comments recorded indicate the concerns in the community are about the environment, particularly caribou; socio-economics, information and benefits; and the human environment, use of the land and health.



## **4 Next Steps**

---

Public participation and information sharing is an ongoing process, and AREVA will continue to liaison committee meetings, workshops, public information sessions and presentations to community councils, HTOs and other interested groups. Project information is always available from the Baker Lake AREVA office, the AREVA website, and public registries.

**Attachment A      Invitation Letter**

---



VIA EMAIL and MAIL

May 28, 2014

Chief Walter Duck  
Sayisi Dene First Nation  
General Delivery  
Tadoule Lake, MB  
R0B 2C0

Dear Chief Duck,

**Re: AREVA Resources Canada Inc. Proposed Kiggavik Project**

AREVA Resources Canada Inc. (AREVA) is proposing to develop the Kiggavik Project, a new uranium mine and mill facility, 80 kilometres west of the Hamlet of Baker Lake in the Kivalliq Region of Nunavut. We are currently revising our Environmental Impact Statement (EIS) for the proposed project anticipating a Final Environmental Impact Statement submission in September 2014 to the Nunavut Impact Review Board (NIRB).

AREVA has been attending the Beverly Qamanirjuaq Caribou Management Board meetings since 2006. During the fall 2013 and spring 2014 meetings, the Tadoule Lake representative has requested AREVA visit the community to share Project information, respond to questions, and listen to and consider concerns regarding the proposed Kiggavik Project. AREVA would like to further engage with the Sayisi Dene First Nation.

It is AREVA's intention to design a project that minimizes effects to caribou and to ecosystem integrity in general, so that caribou users will not be adversely affected within or outside the Nunavut Settlement Area. Attached is a map showing the project location, the Beverly and Qamanirjuaq caribou herd annual ranges as determined by the Government of Nunavut and the communities of Lac Brochet and Tadoule Lake, Manitoba. AREVA acknowledges that caribou use the landscape without consideration of jurisdictional boundaries and we note that the attached figure represents that the proposed Kiggavik Project is on the northern Qamanirjuaq annual range and that the Project is unlikely to regularly interact with Beverly caribou whose annual range lies primarily west of Kiggavik. AREVA is aware that numerous parties support extended Beverly and Qamanirjuaq caribou ranges informed by traditional knowledge, satellite collars, and aerial surveys. AREVA has requested these shape files from the BQCMB for inclusion in the Kiggavik final EIS and in particular, to inform the

**AREVA Resources Canada Inc.**  
P.O. Box 9204 - 817 - 45<sup>th</sup> Street West - Saskatoon, S4K 57K3K5 - CANADA  
Tel: 1 (306) 343-4600 - Fax: 1 (306) 653-3883 - Web Site: [www.aveva.ca](http://www.aveva.ca)

**Figure A- 1 Invitation Letter, May 28, 2014**