

FIGURE 5-3
CARIBOU CALVING DENSITY (MAY 26 TO JUNE 25) WITH CARIBOU CALVING FROM IQ STUDIES

DEIS TECHNICAL COMMENT RESPONSES

Kiggavik
Project



AREVA Resources Canada Inc. - P.O. Box 9204 - 817 - 45th Street West - Saskatoon, SK - S7K 3X5

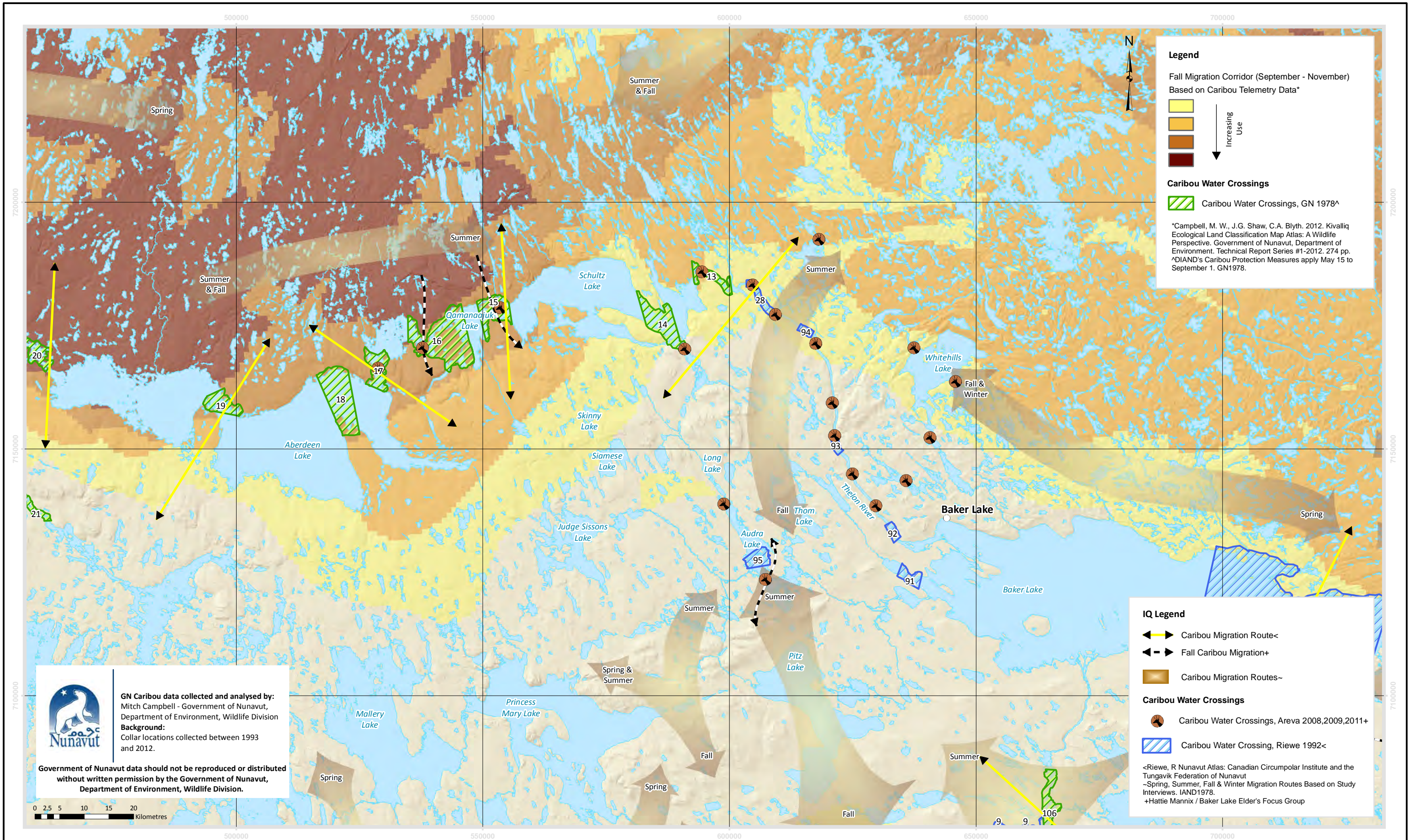


FIGURE
CARIBOU FALL MIGRATION WITH IQ MOVEMENT

KIGGAVIK PROJECT - EIS

**KIGGAVIK
PROJECT**



AREVA Resources Canada Inc - P.O. Box 9204 - 817 - 45th Street West - Saskatoon, SK - S7K 3X5

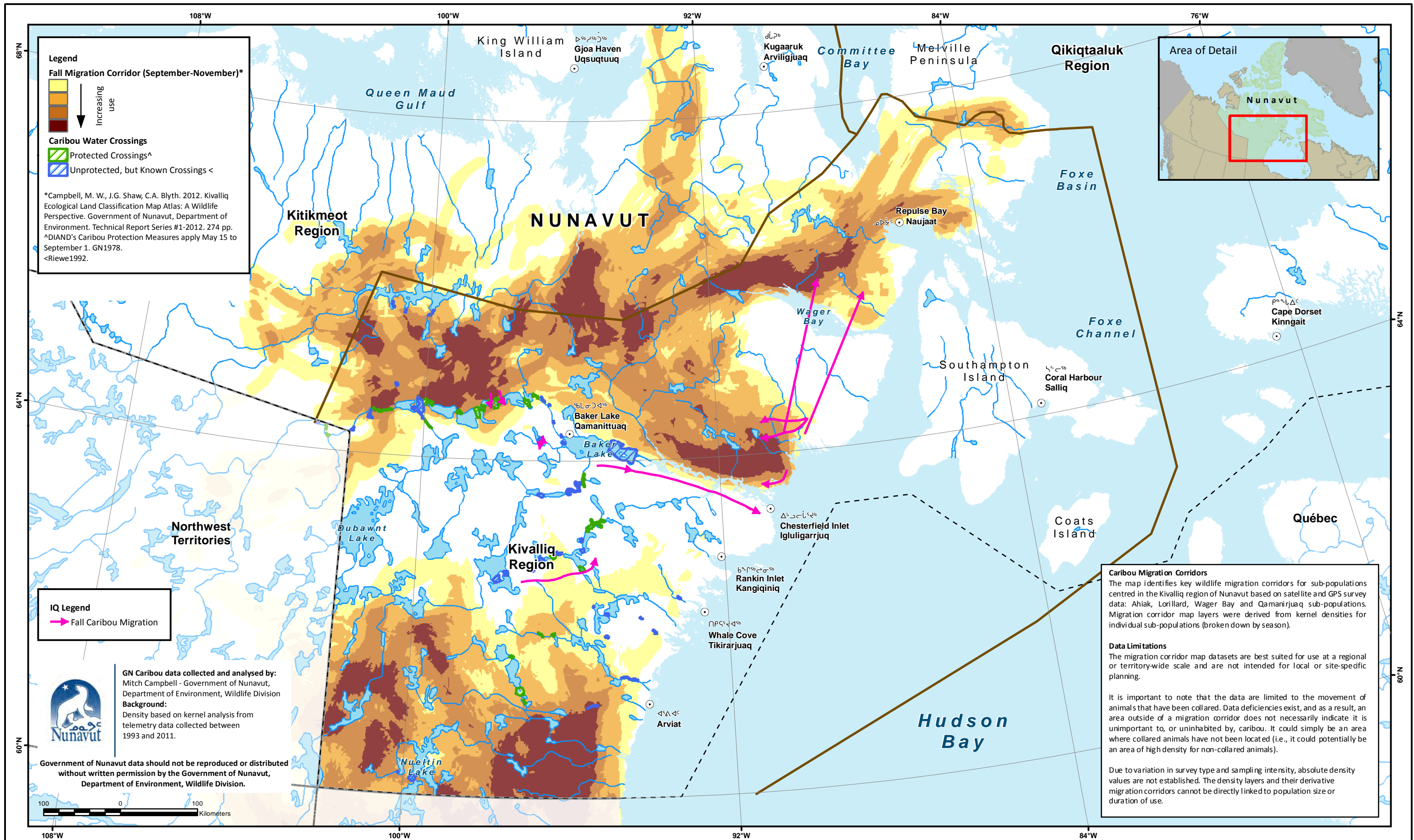


FIGURE 6-6
CARIBOU FALL MIGRATION CORRIDORS FOR QAMANIRJUAQ, AHIAK, WAGER BAY AND LORILLARD SUB-POPULATIONS
(BASED ONLY ON GOVERNMENT OF NUNAVUT TELEMETRY DATA) WITH FALL CARIBOU MOVEMENTS BASED ON IQ

Projection: Canada Lambert Conformal Conic
Creator: CASLYS CONSULTING LTD.
Date: 02/24/2014 Scale: 1:4,500,000
File: 6-6_Caribou_Fall_Migration_Corridors.mxd
Data Sources: Natural Resources Canada, GeoBase®, National Topographic Database, AREVA Resources Canada Inc., Government of Nunavut, and Gebauer & Associates.

**KIGGAVIK
PROJECT**



AREVA Resources Canada Inc. - P.O. Box 9204 - 817 - 45th Street West - Saskatoon, SK - S7K 3X5