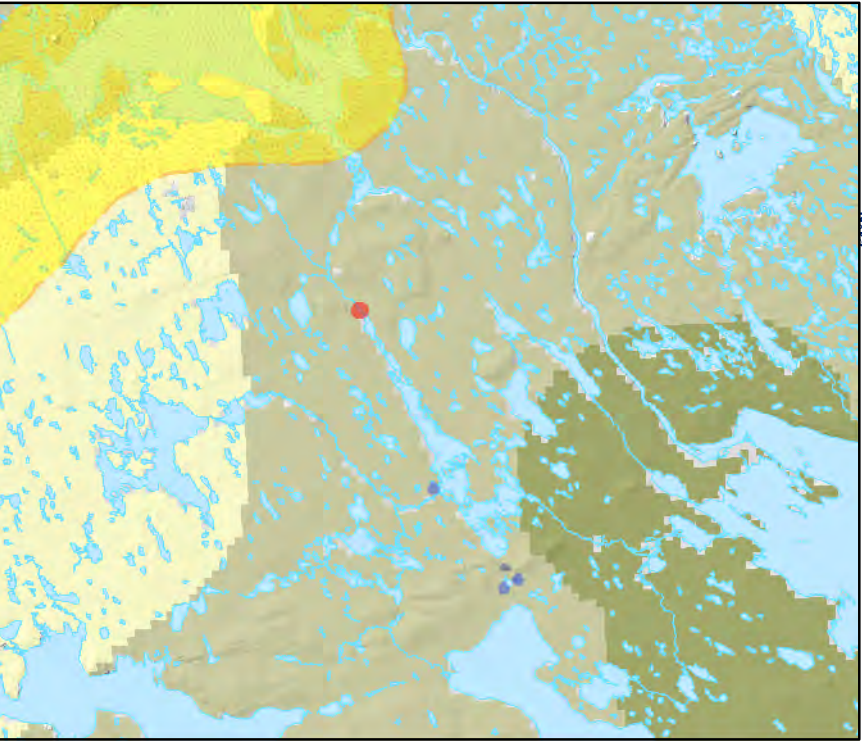
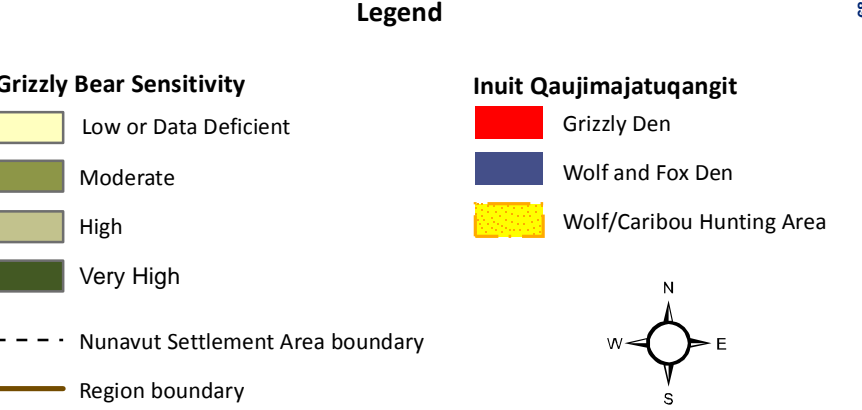


GRIZZLY BEAR SENSITIVITY WITH IDENTIFIED INUIT QAUJIMAJATUQANGIT (IQ) ON PREDATORY MAMMALS

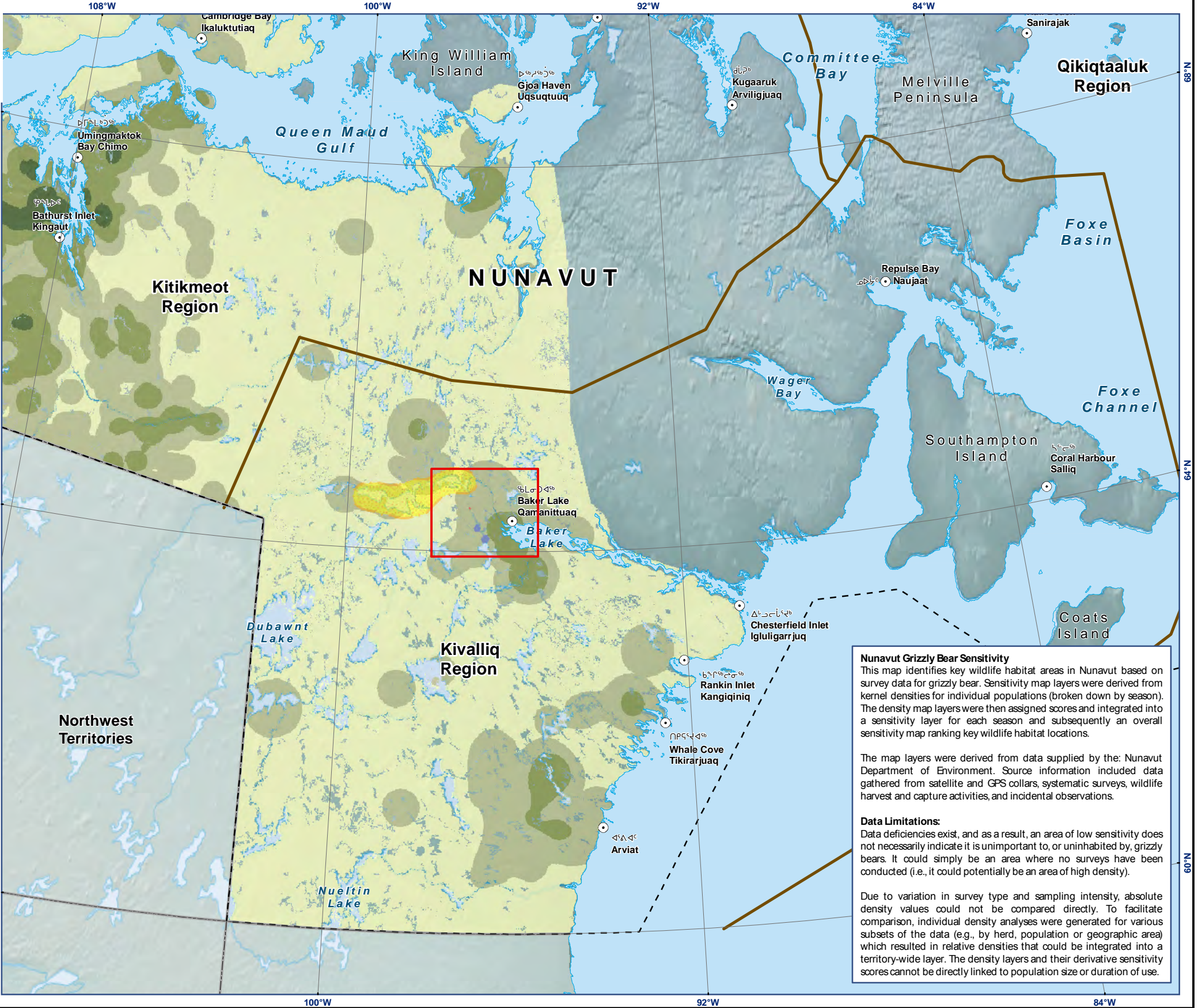
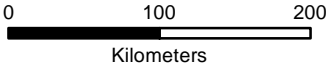


Data Sources:
Natural Resources Canada, Caslys Consulting Ltd.
Department of Environment (Government of Nunavut)

Campbell, M. W., J.G. Shaw, C.A. Blyth. 2012. Kivalliq Ecological Land Classification Map Atlas: A Wildlife Perspective. Government of Nunavut, Department of Environment. Technical Report Series #1-2012. 274 pp.



Avatiliqiyikkut
Department of Environment
Ministère de l'Environnement



Nunavut Grizzly Bear Sensitivity
This map identifies key wildlife habitat areas in Nunavut based on survey data for grizzly bear. Sensitivity map layers were derived from kernel densities for individual populations (broken down by season). The density map layers were then assigned scores and integrated into a sensitivity layer for each season and subsequently an overall sensitivity map ranking key wildlife habitat locations.

The map layers were derived from data supplied by the: Nunavut Department of Environment. Source information included data gathered from satellite and GPS collars, systematic surveys, wildlife harvest and capture activities, and incidental observations.

Data Limitations:
Data deficiencies exist, and as a result, an area of low sensitivity does not necessarily indicate it is unimportant to, or uninhabited by, grizzly bears. It could simply be an area where no surveys have been conducted (i.e., it could potentially be an area of high density).

Due to variation in survey type and sampling intensity, absolute density values could not be compared directly. To facilitate comparison, individual density analyses were generated for various subsets of the data (e.g., by herd, population or geographic area) which resulted in relative densities that could be integrated into a territory-wide layer. The density layers and their derivative sensitivity scores cannot be directly linked to population size or duration of use.

Projection: Canada Lambert Conformal Conic WGS 84
Compiled: TL Drawn: TL
Date: 5/5/2014 Scale: 1: 5,000,000
Data Sources: Hattie Mannix (Baker Lake) Baker Lake Elder's Focus Group. AREVA Resources Canada Inc.

FIGURE
GRIZZLY BEAR SENSITIVITY WITH IDENTIFIED INUIT QAUJIMAJATUQANGIT (IQ) ON PREDATORY MAMMALS

REPORT