


LEGEND

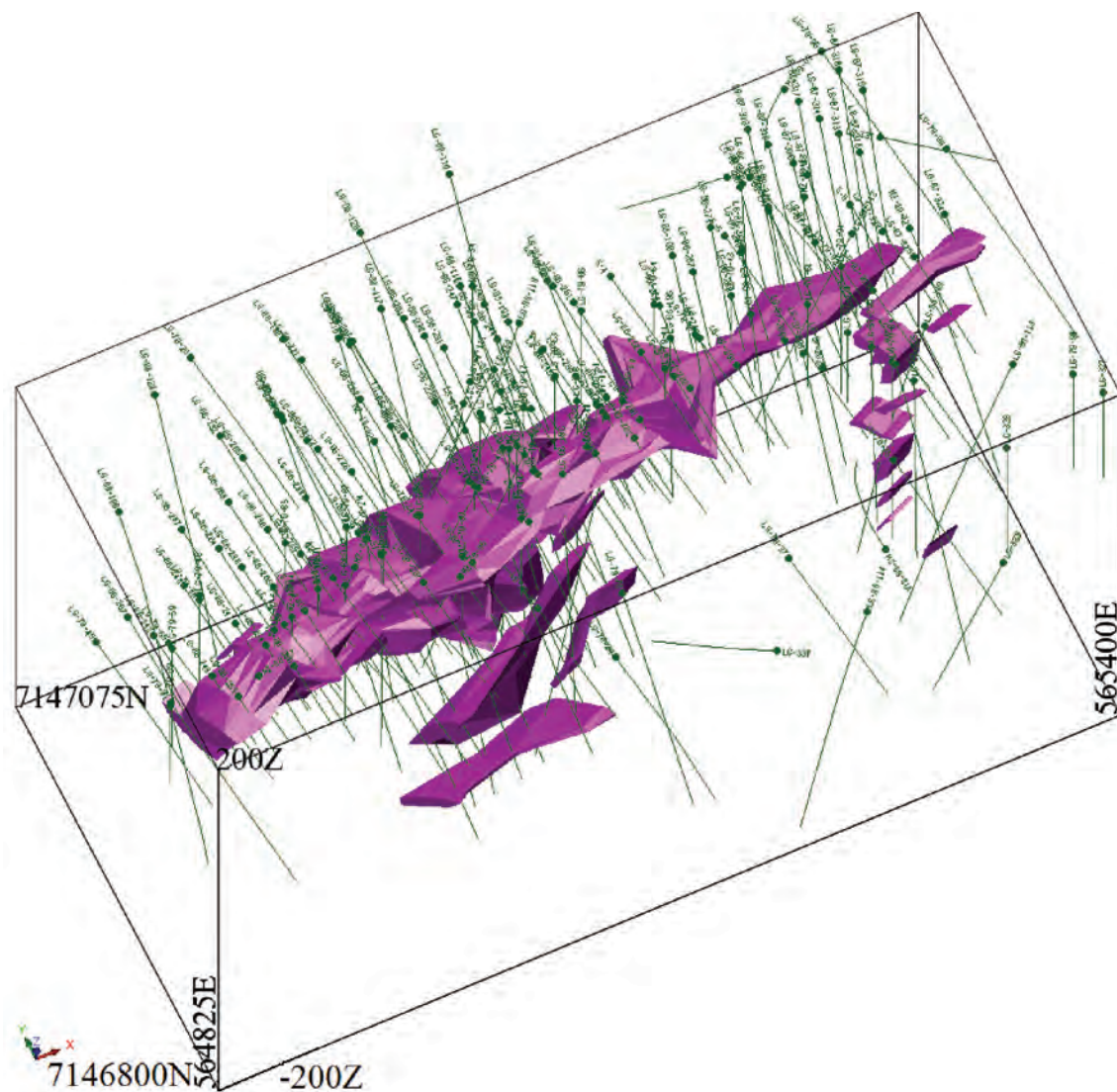
- Overburden
- Diabase
- Lamprophyre
- Banded Iron Formation
- Quartzite
- Quartz-Feldspar Porphyry
- Syenite
- Granite
- Intrusive Rocks (Undifferentiated)
- Paragneiss (Undifferentiated)
- Orthogneiss (Undifferentiated)
- Psammo Pelitic to Pelitic Gneiss
- Silica Breccia
- Breccia
- Fault
- Permafrost Limit
- Drill hole and number
- Mineralized Envelope



AREVA Resources Canada Inc.
P.O. Box 9204
817-45th Street West
Saskatoon, SK., Canada S7K 3X5

KIGGAVIK PROJECT
Main Zone Deposit
Longitudinal Section

Compiled: D. Morrison		Scale: 1:1250
Drawn: B. Derrow	Date: May 16, 2011	File Name: 1192-842
Report No.:		Figure No.: 4.2-5

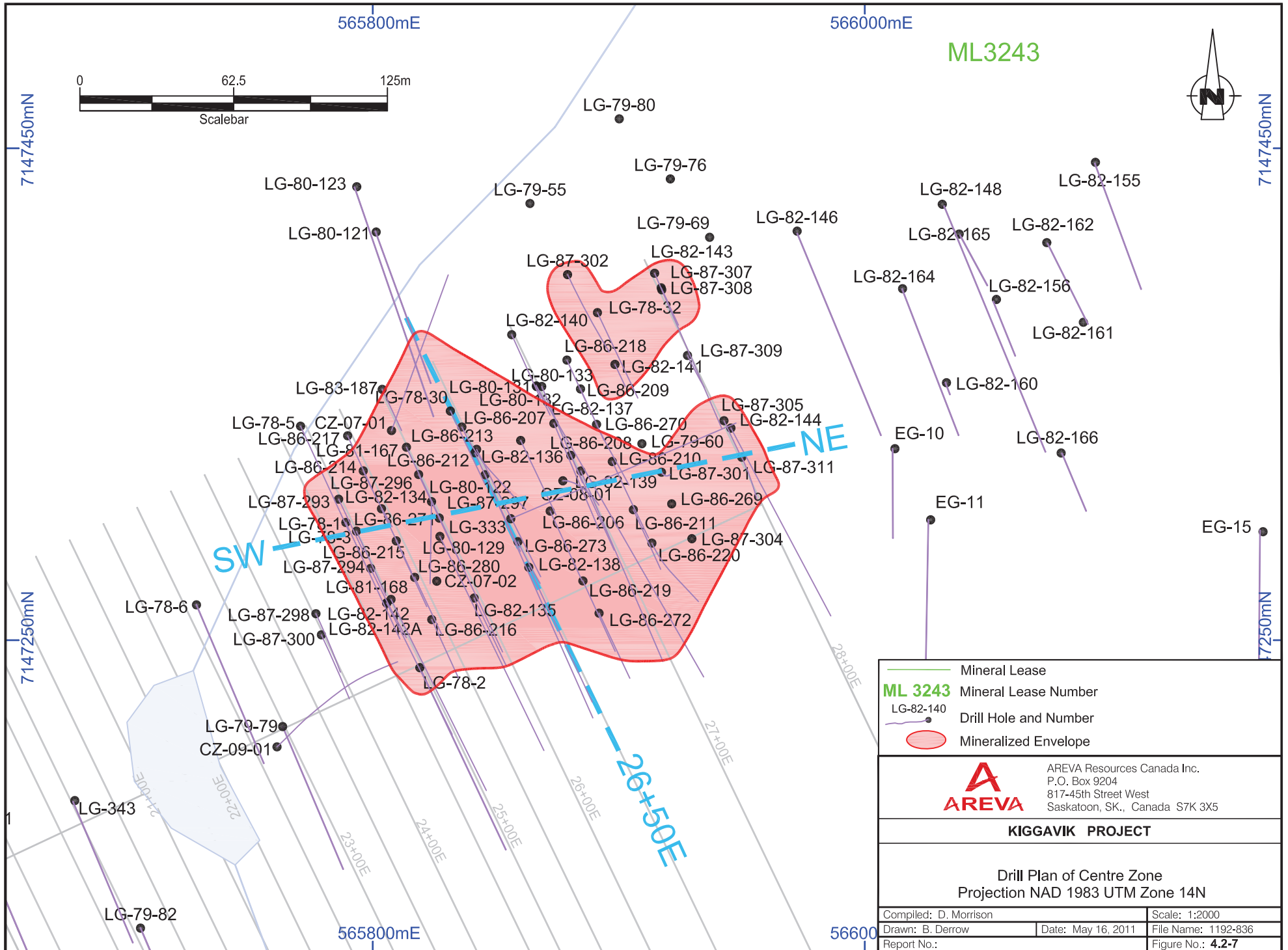


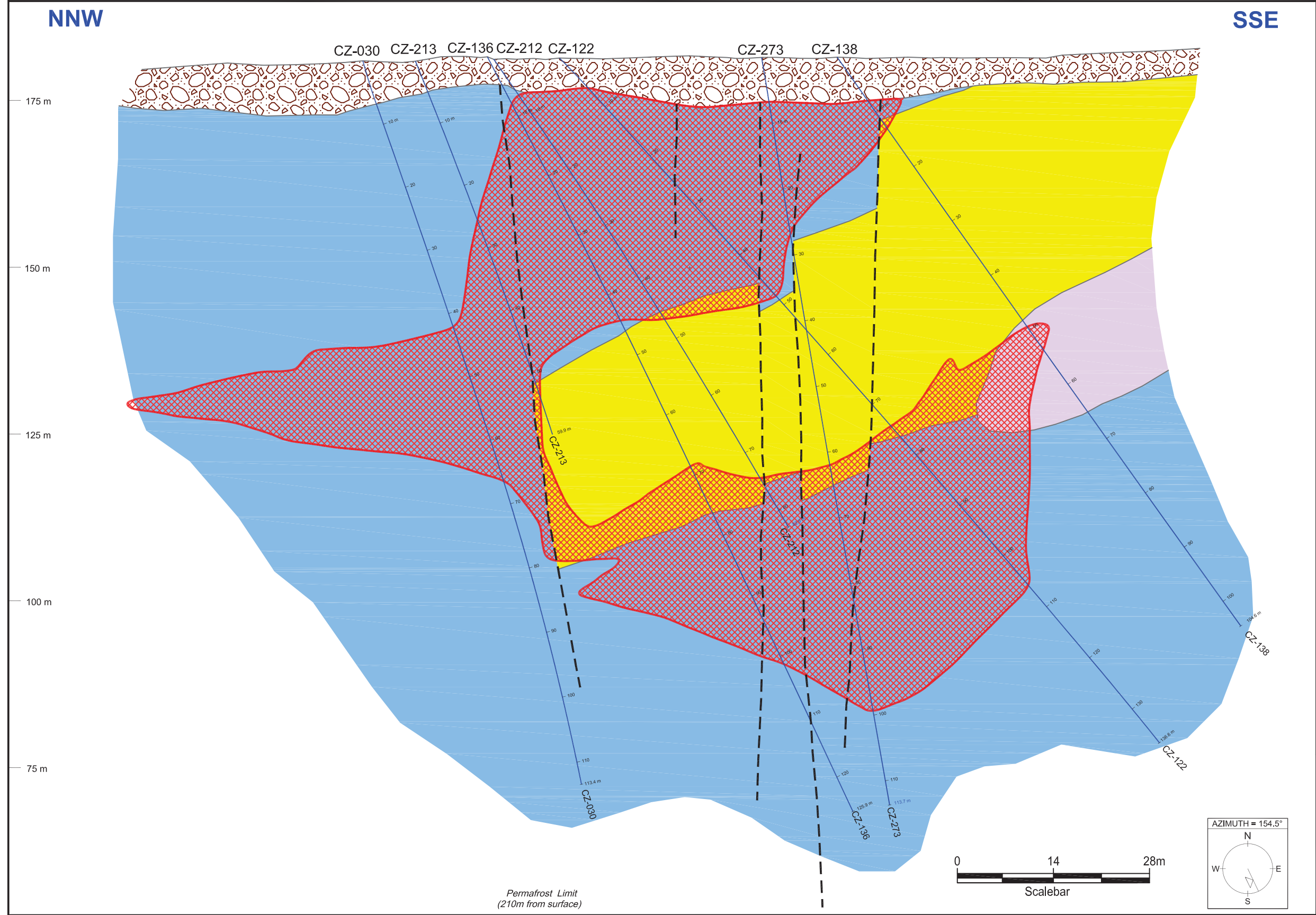
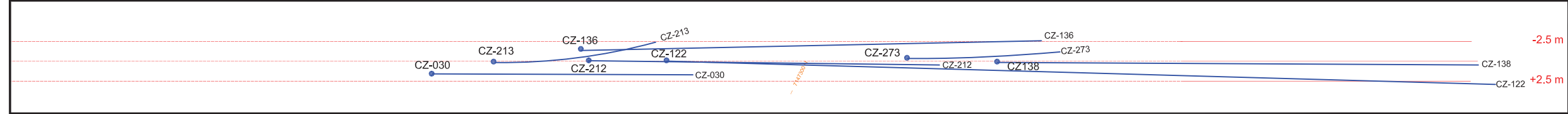
Projection: N/A
 Creator: CDC
 Date: 05/24/2011 Scale:
 File:
 Data Sources: AREVA Resources Canada Inc.

FIGURE 4.2-6
 THREE DIMENSIONAL VIEW OF MAIN ZONE DEPOSIT
 GEOLOGY AND HYDROGEOLOGY BASELINE

**Kiggavik
 Project**







- LEGEND**
- Overburden
 - Diabase
 - Lamprophyre
 - Banded Iron Formation
 - Quartzite
 - Quartz-Feldspar Porphyry
 - Syenite
 - Granite
 - Intrusive Rocks (Undifferentiated)
 - Paragneiss (Undifferentiated)
 - Orthogneiss (Undifferentiated)
 - Psammo Pelitic to Pelitic Gneiss
 - Silica Breccia
 - Breccia
 - Fault
 - Permafrost Limit
 - Drill hole and number
 - Mineralized Envelope

AREVA AREVA Resources Canada Inc.
P.O. Box 9204
817-45th Street West
Saskatoon, SK., Canada S7K 3X5

KIGGAVIK PROJECT

Centre Zone Deposit
Line 26+50E

Compiled: D. Morrison	Scale: 1:600
Drawn: B. Derrow	Date: May 16, 2011
Report No.:	File Name: 1192-837
	Figure No.: 4.2-8

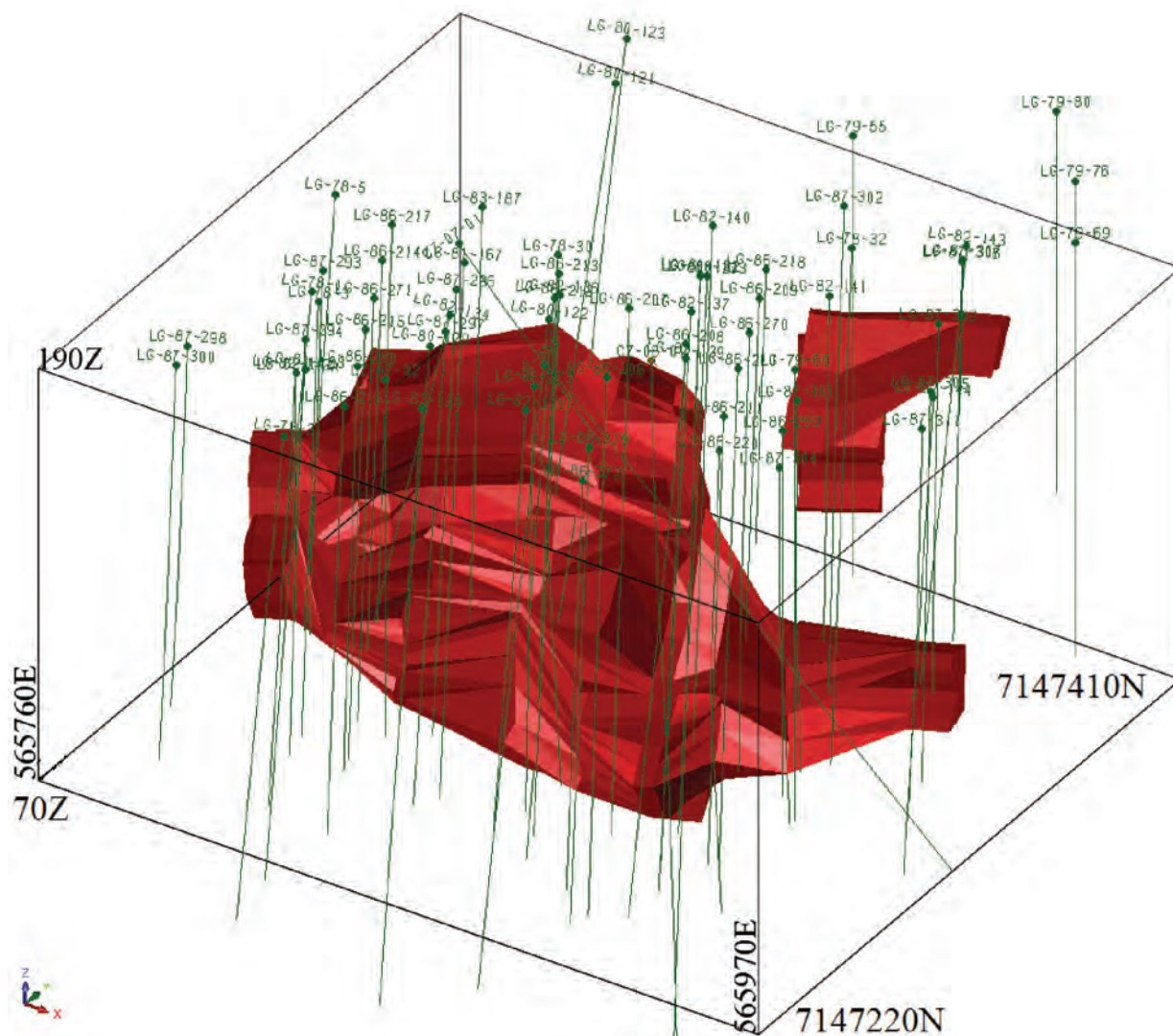


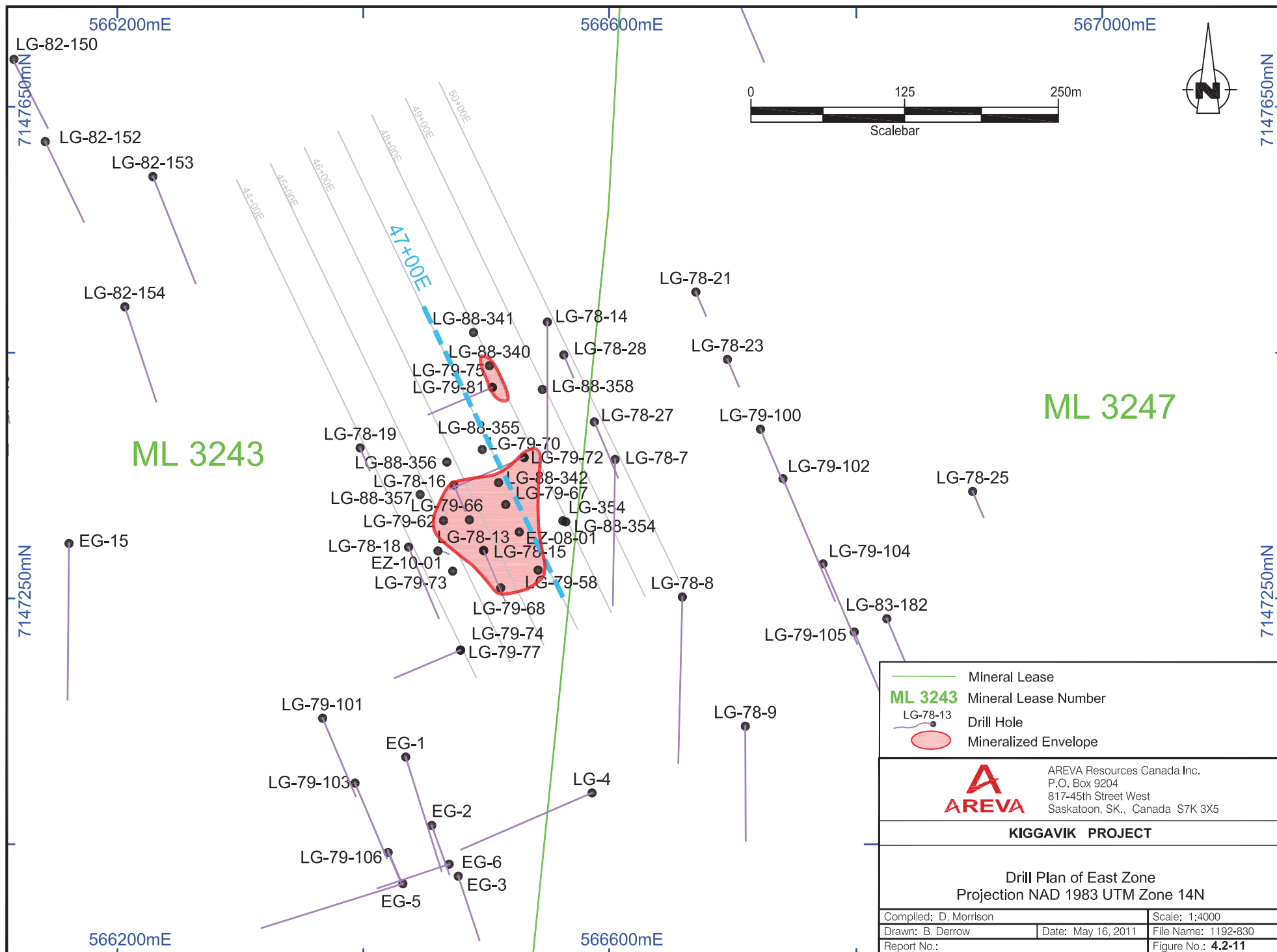
FIGURE 4.2-10
THREE DIMENSIONAL VIEW OF CENTRE ZONE DEPOSIT

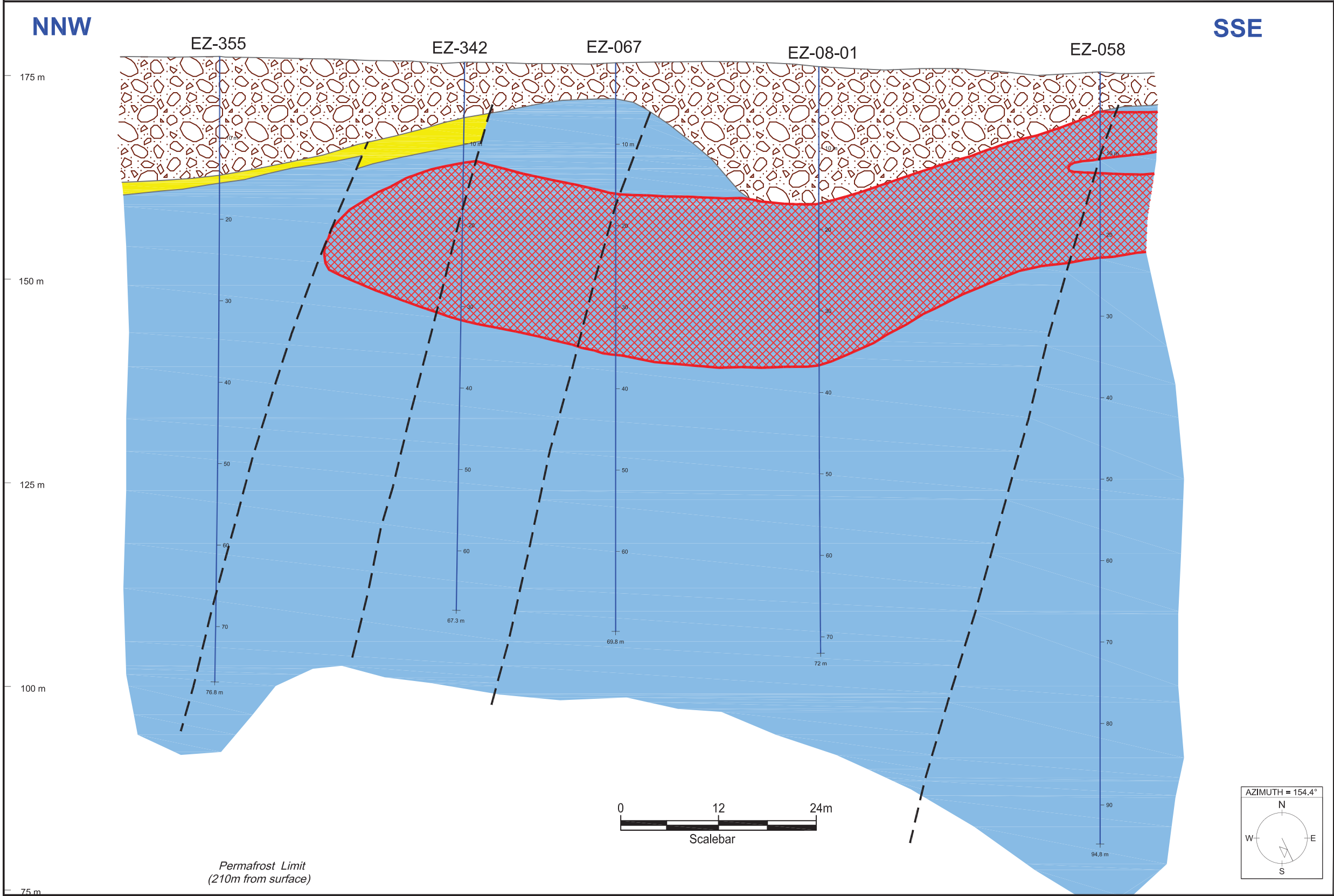
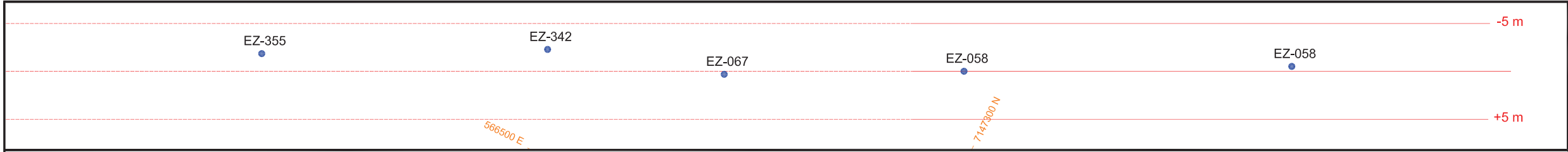
GEOLOGY AND HYDROGEOLOGY BASELINE

Projection: N/A
Creator: CDC
Date: 05/24/2011 Scale:
File:
Data Sources: AREVA Resources Canada Inc.

**Kiggavik
Project**

AREVA





LEGEND

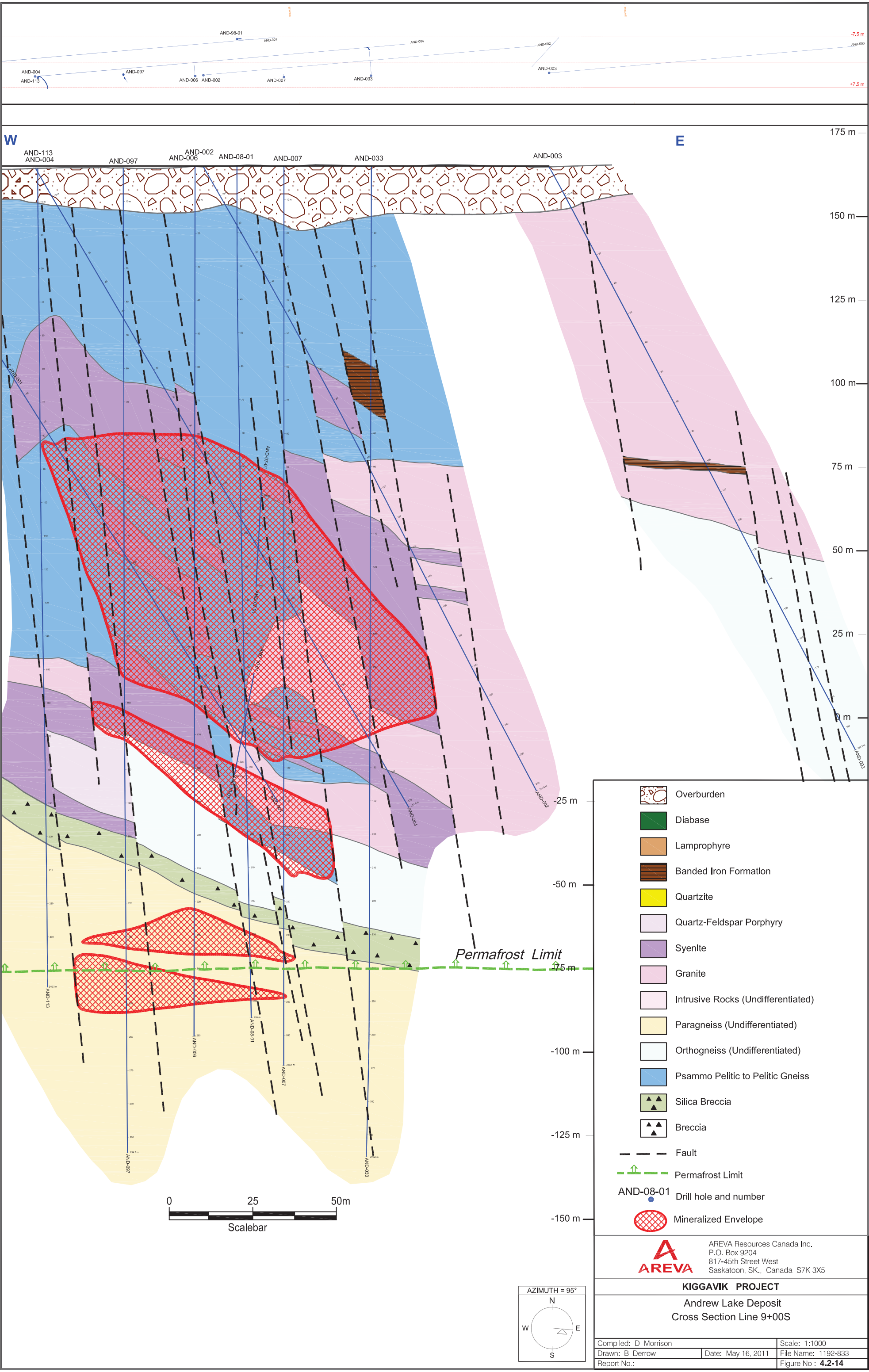
- Overburden
- Diabase
- Lamprophyre
- Banded Iron Formation
- Quartzite
- Quartz-Feldspar Porphyry
- Syenite
- Granite
- Intrusive Rocks (Undifferentiated)
- Paragneiss (Undifferentiated)
- Orthogneiss (Undifferentiated)
- Psammo Pelitic to Pelitic Gneiss
- Silica Breccia
- Breccia
- Fault
- Permafrost Limit
- EZ-058 Drill hole and number
- Mineralized Envelope



AREVA Resources Canada Inc.
P.O. Box 9204
817-45th Street West
Saskatoon, SK., Canada S7K 3X5

KIGGAVIK PROJECT
East Zone Deposit
Line 47+00E

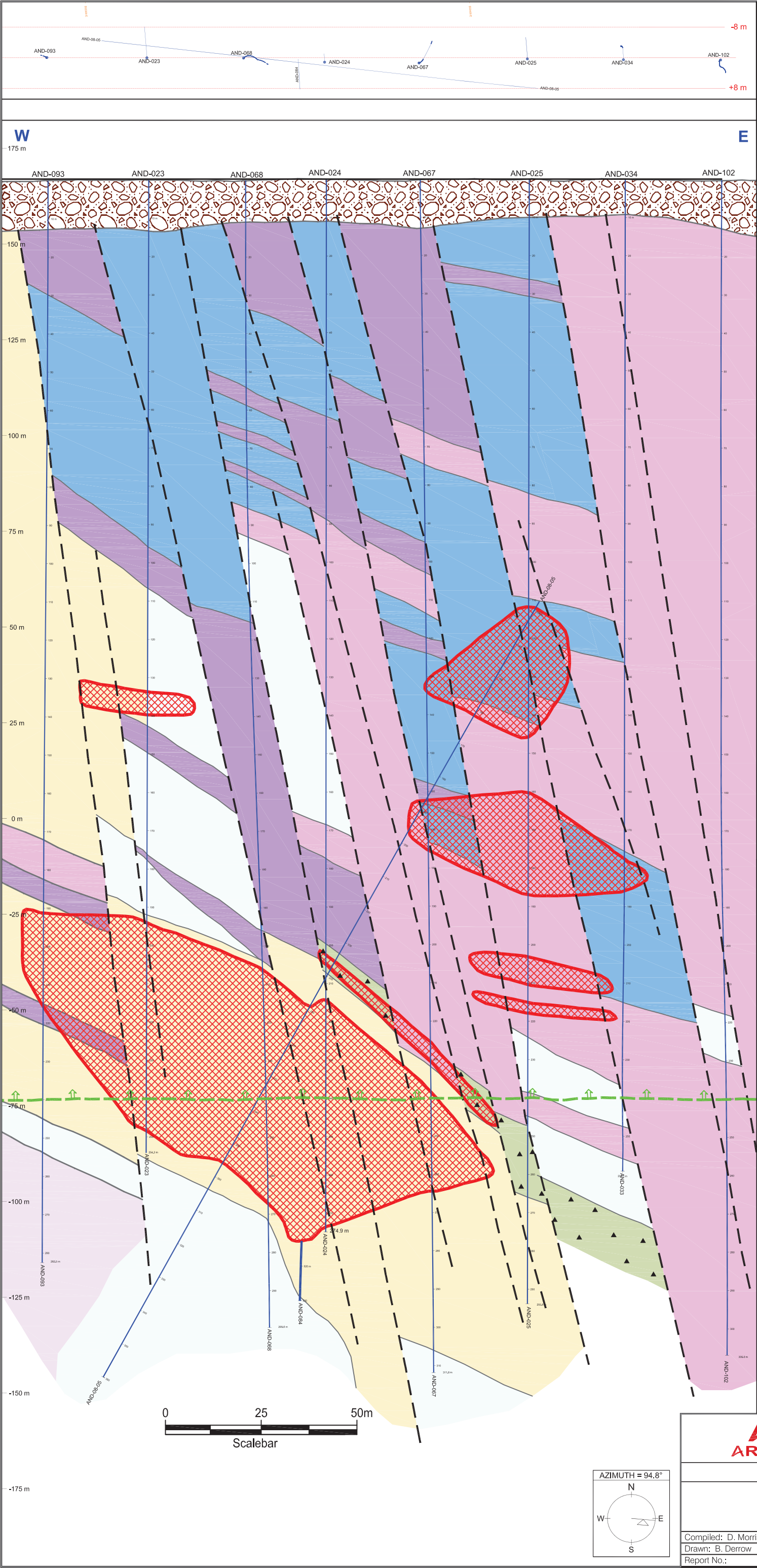
Compiled: D. Morrison	Scale: 1:500	
Drawn: B. Derrow	Date: May 16, 2011	File Name: 1192-831
Report No.:	Figure No.: 4.2-12	



AREVA Resources Canada Inc.
P.O. Box 9204
817-45th Street West
Saskatoon, SK., Canada S7K 3X5

KIGGAVIK PROJECT

Andrew Lake Deposit
Cross Section Line 9+00S



LEGEND

Overburden

Diabase

Lamprophyre

Banded Iron Formation

Quartzite

Quartz-Feldspar Porphyry

Syenite

Granite

Intrusive Rocks (Undifferentiated)

Paragneiss (Undifferentiated)

Orthogneiss (Undifferentiated)

Psammo Pelitic to Pelitic Gneiss

Silica Breccia

Breccia

Permafrost Limit

Fault

AND-08-01
Drill hole and number

Mineralized Envelope

AREVA Resources Canada Inc.
P.O. Box 9204
817-45th Street West
Saskatoon, SK., Canada S7K 3X5

KIGGAVIK PROJECT

Andrew Lake Deposit

Cross Section Line 10+00S

Compiled: D. Morrison

Drawn: B. Derrow

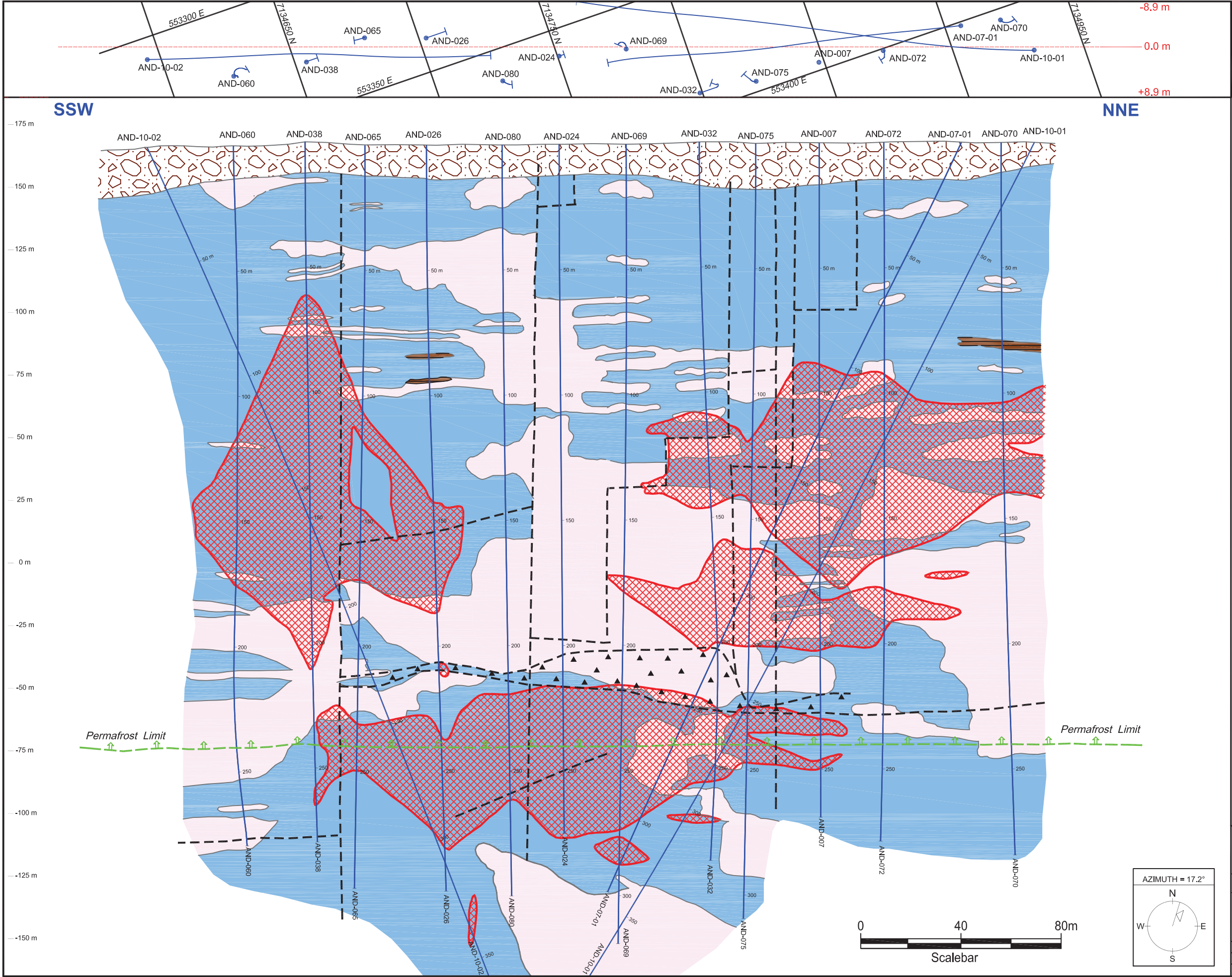
Report No.:

Scale: 1:1000

Date: May 16, 2011

File Name: 1192-834

Figure No.: 4.2-15



LEGEND

- Overburden
- Diabase
- Lamprophyre
- Banded Iron Formation
- Quartzite
- Quartz-Feldspar Porphyry
- Syenite
- Granite
- Intrusive Rocks (Undifferentiated)
- Paragneiss (Undifferentiated)
- Orthogneiss (Undifferentiated)
- Psammo Pelitic to Pelitic Gneiss
- Silica Breccia
- Breccia
- Fault
- Permafrost Limit
- AND-10-01 Drill hole and number
- Mineralized Envelope

AREVA AREVA Resources Canada Inc.
P.O. Box 9204
817-45th Street West
Saskatoon, SK., Canada S7K 3X5

KIGGAVIK PROJECT

**Andrew Lake Deposit
Longitudinal Section**

Compiled: R. Zerff / D. Morrison	Scale: 1:1500
Drawn: B. Derrow	Date: May 16, 2011
Report No.:	File Name: 1192-835 Figure No.: 4.2-16

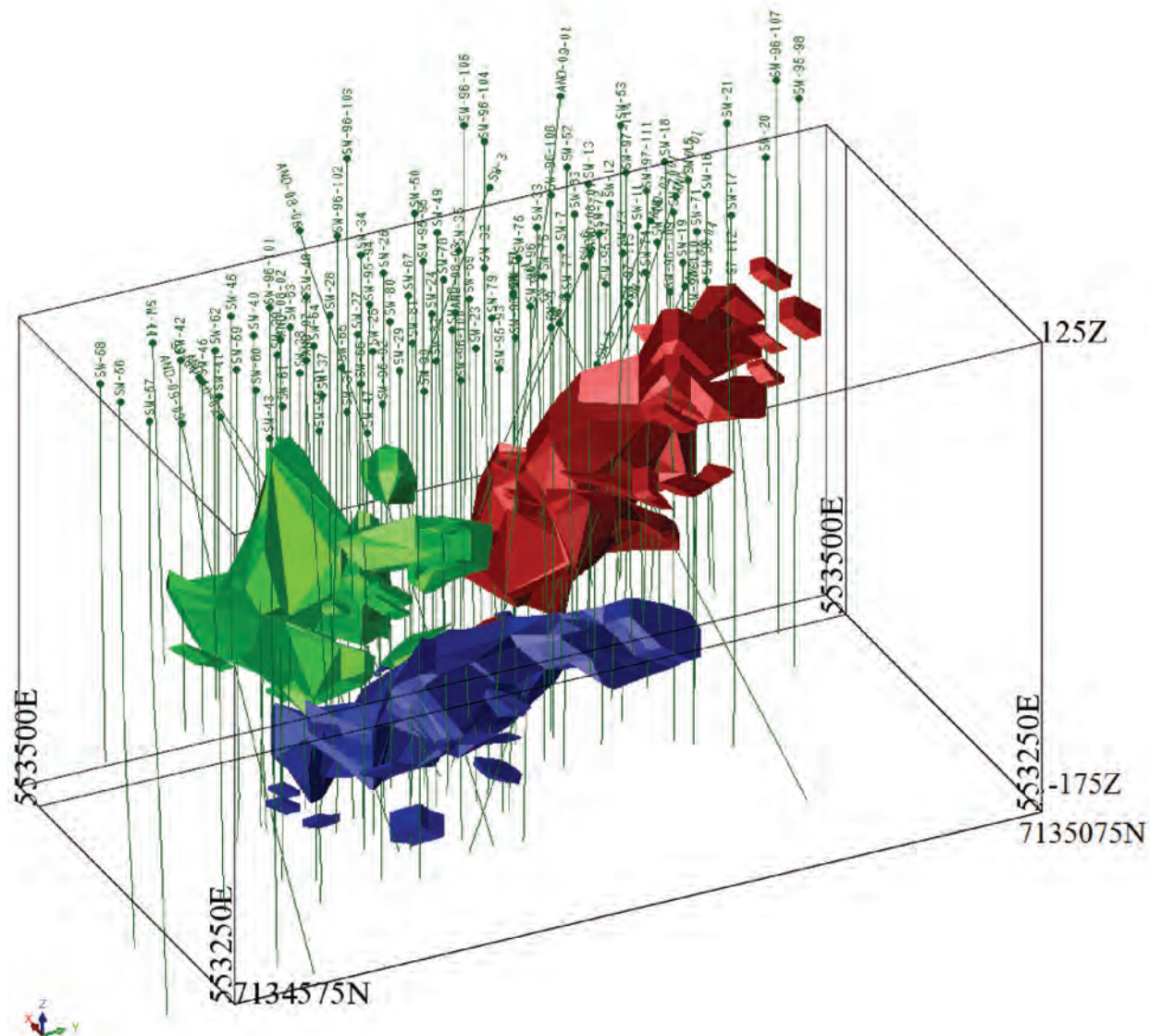


FIGURE 4.2-17
THREE DIMENSIONAL VIEW OF ANDREW LAKE DEPOSIT

GEOLOGY AND HYDROGEOLOGY BASELINE

Projection: N/A
Creator: CDC
Date: 05/24/2011 Scale:
File:
Data Sources: AREVA Resources Canada Inc.

**Kiggavik
Project**



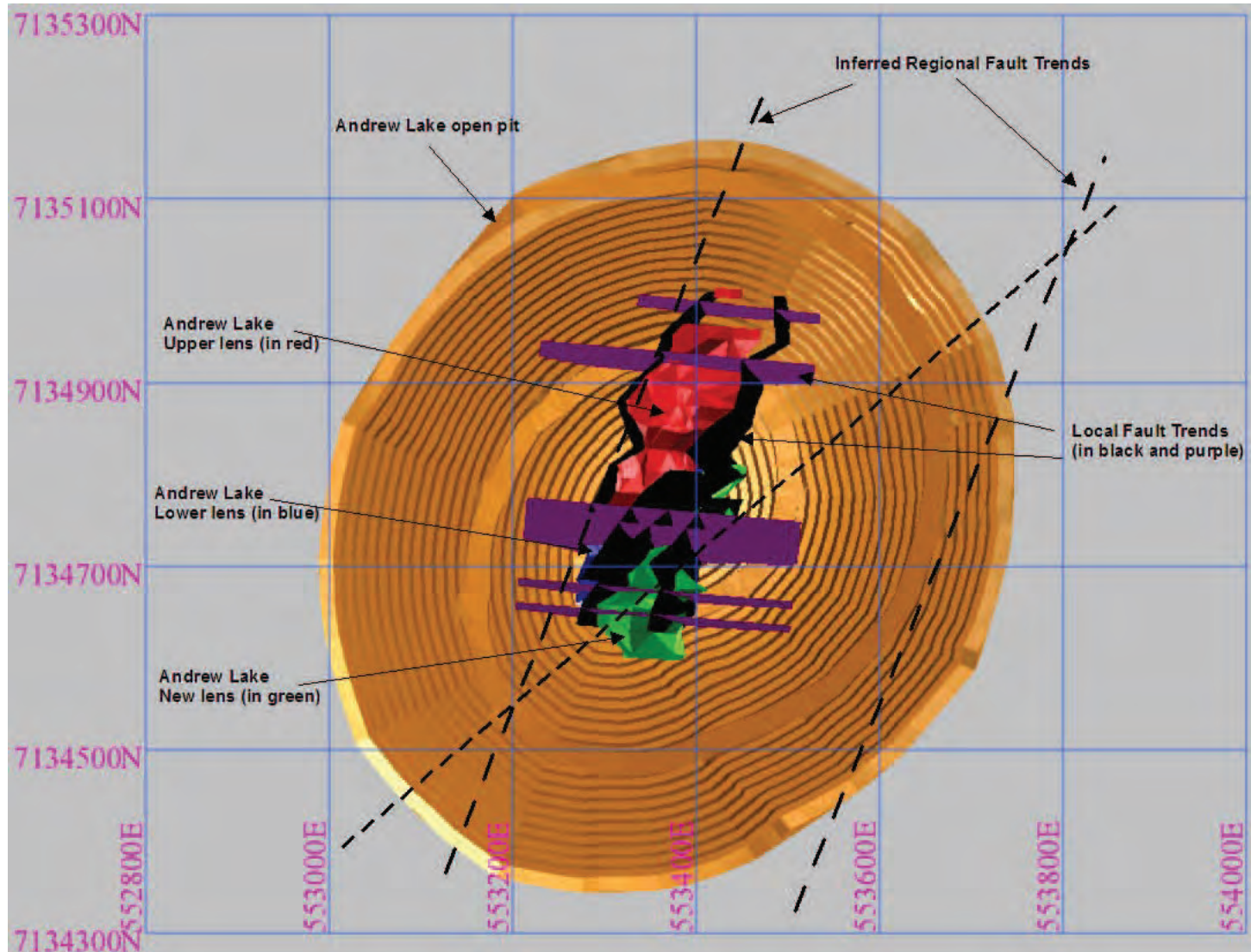
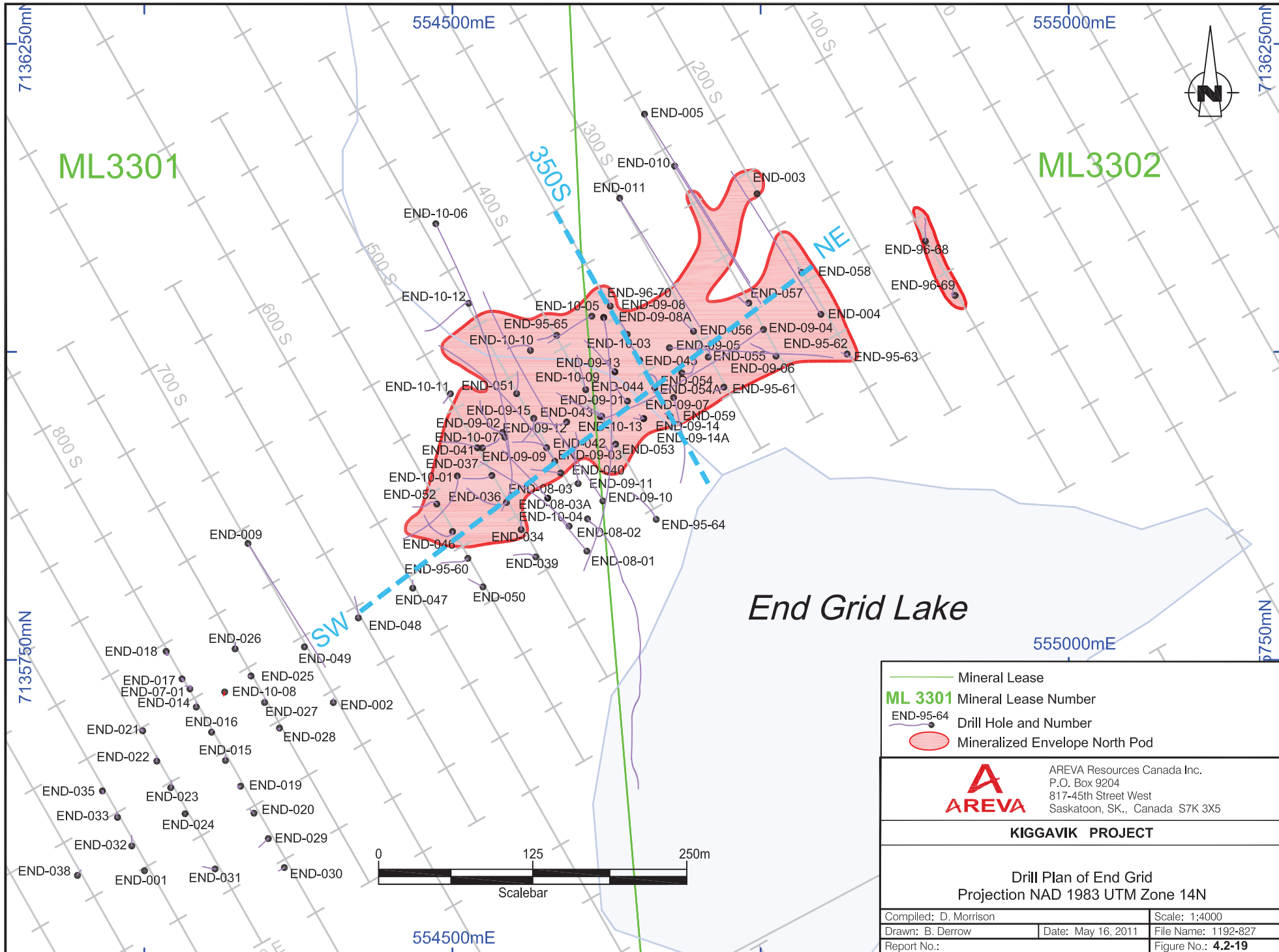
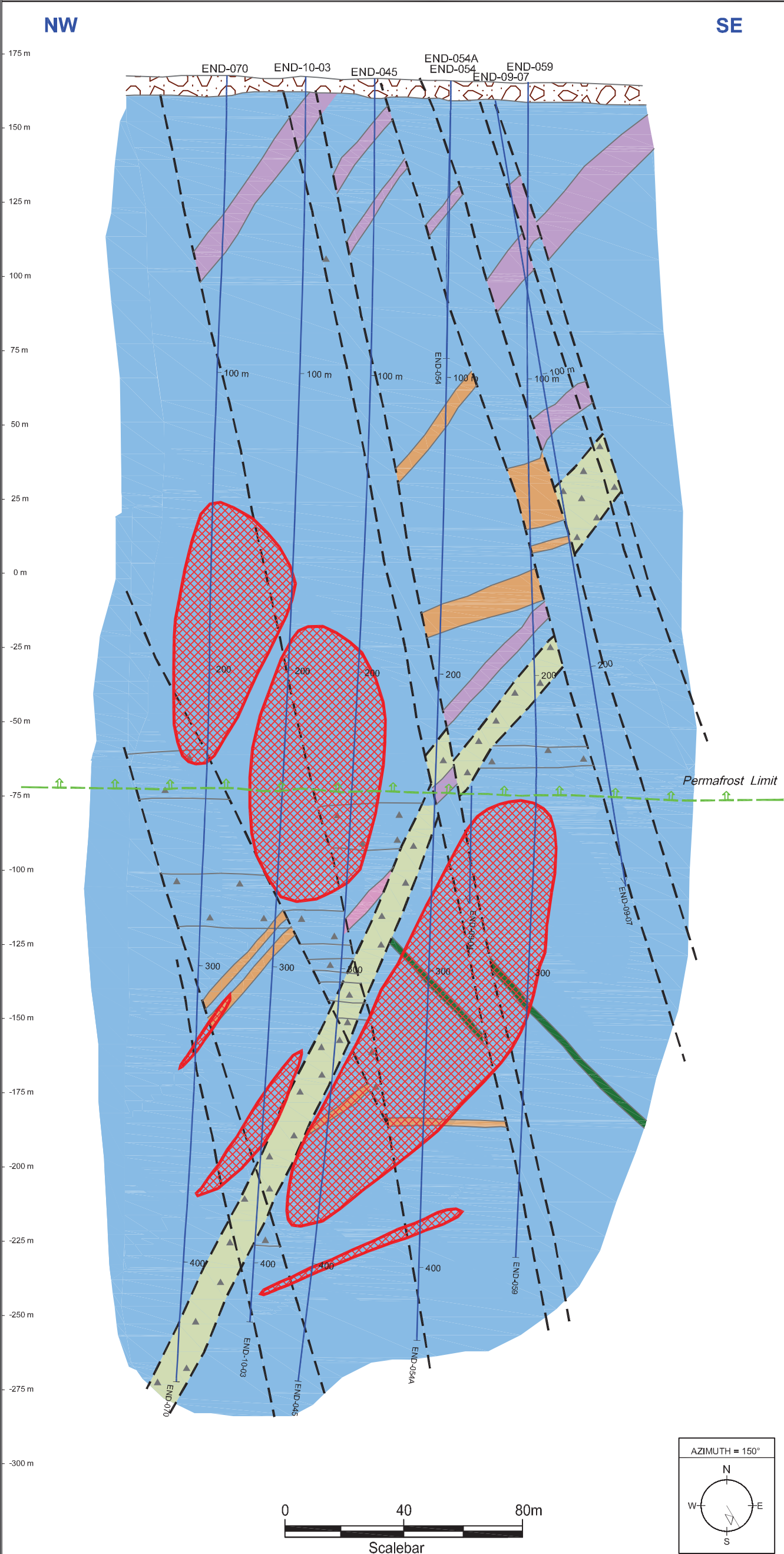
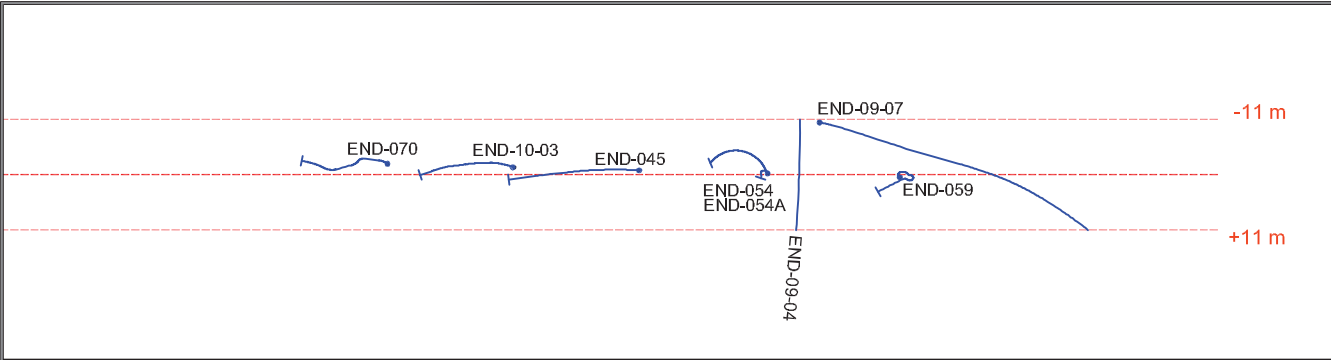


Figure 4.2-18
Andrew Lake orebody and structures





LEGEND

- Overburden
- Diabase
- Lamprophyre
- Banded Iron Formation
- Quartzite
- Quartz-Feldspar Porphyry
- Syenite
- Granite
- Intrusive Rocks (Undifferentiated)
- Paragneiss (Undifferentiated)
- Orthogneiss (Undifferentiated)
- Psammo Pelitic to Pelitic Gneiss
- Silica Breccia
- Breccia
- Permafrost Limit
- Fault
- END-10-03 Drill hole and number
- Mineralized Envelope

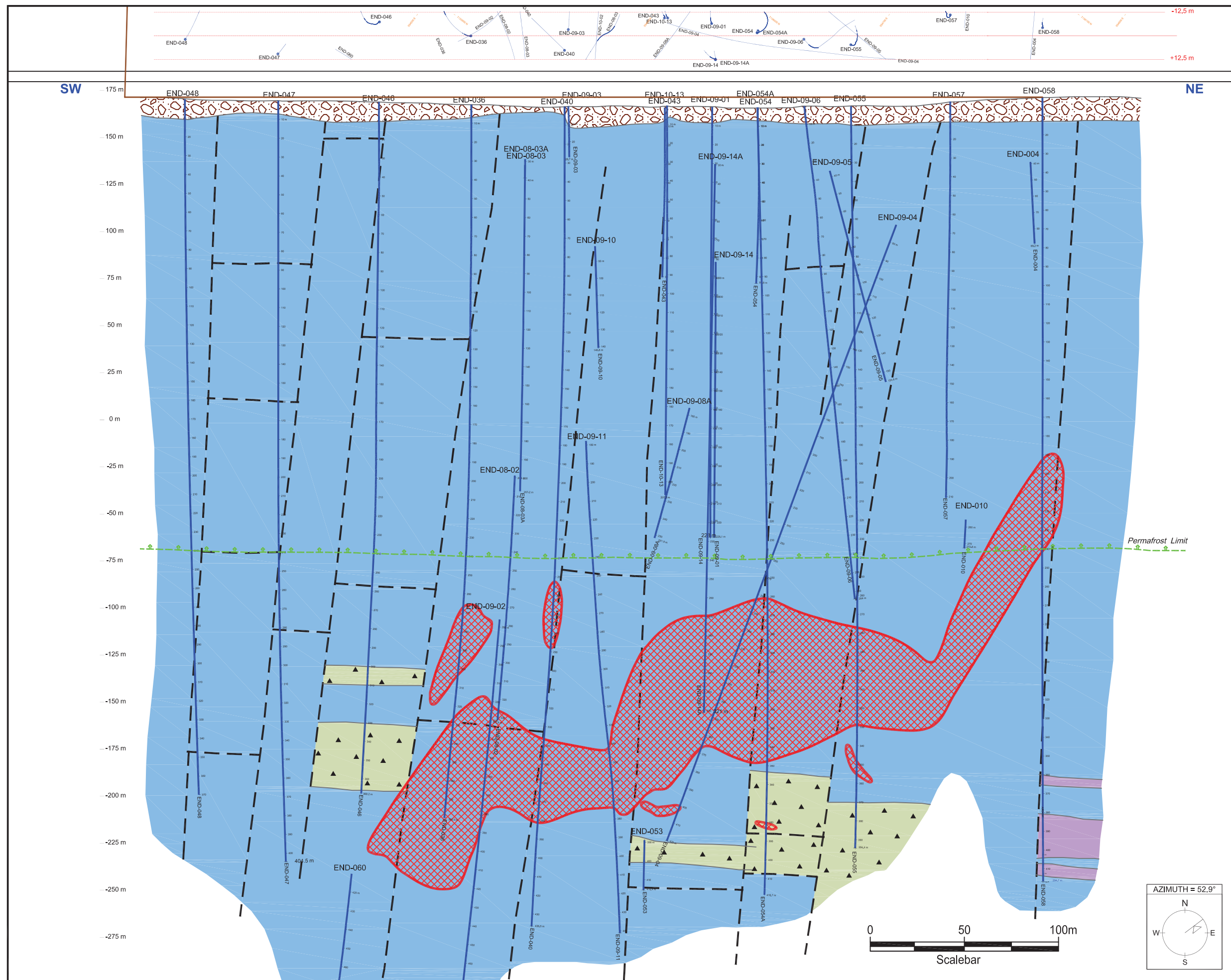


AREVA Resources Canada Inc.
P.O. Box 9204
817-45th Street West
Saskatoon, SK, Canada S7K 3X5

KIGGAVIK PROJECT

End Grid North Pod Deposit
Section Line 3+50S

Compiled: R. Zeriff / D. Morrison	Scale: 1500
Drawn: B. Derrow	Date: May 16, 2011
Report No.:	File Name: 1192-828
	Figure No.: 4.2-20



LEGEND

- | | |
|---|------------------------------------|
|  | Overburden |
|  | Diabase |
|  | Lamprophyre |
|  | Banded Iron Formation |
|  | Quartzite |
|  | Quartz-Feldspar Porphyry |
|  | Syenite |
|  | Granite |
|  | Intrusive Rocks (Undifferentiated) |
|  | Paragneiss (Undifferentiated) |
|  | Orthogneiss (Undifferentiated) |
|  | Psammo Pelitic to Pelitic Gneiss |
|  | Silica Breccia |
|  | Breccia |
|  | Permafrost Limit |
|  | Fault |
|  | Drill hole and number |
|  | Mineralized Envelope |



AREVA Resources Canada Inc.
P.O. Box 9204
817-45th Street West
Saskatoon, SK., Canada S7K 3X5

KIGGAVIK PROJECT

End Grid North Pod Deposit
Longitudinal Section

Compiled: D. Morrison

Drawn: B. Derrow

Report No.:

Scale: 1:2000

File Name: 1192-829

Figure No.: 4.2-21