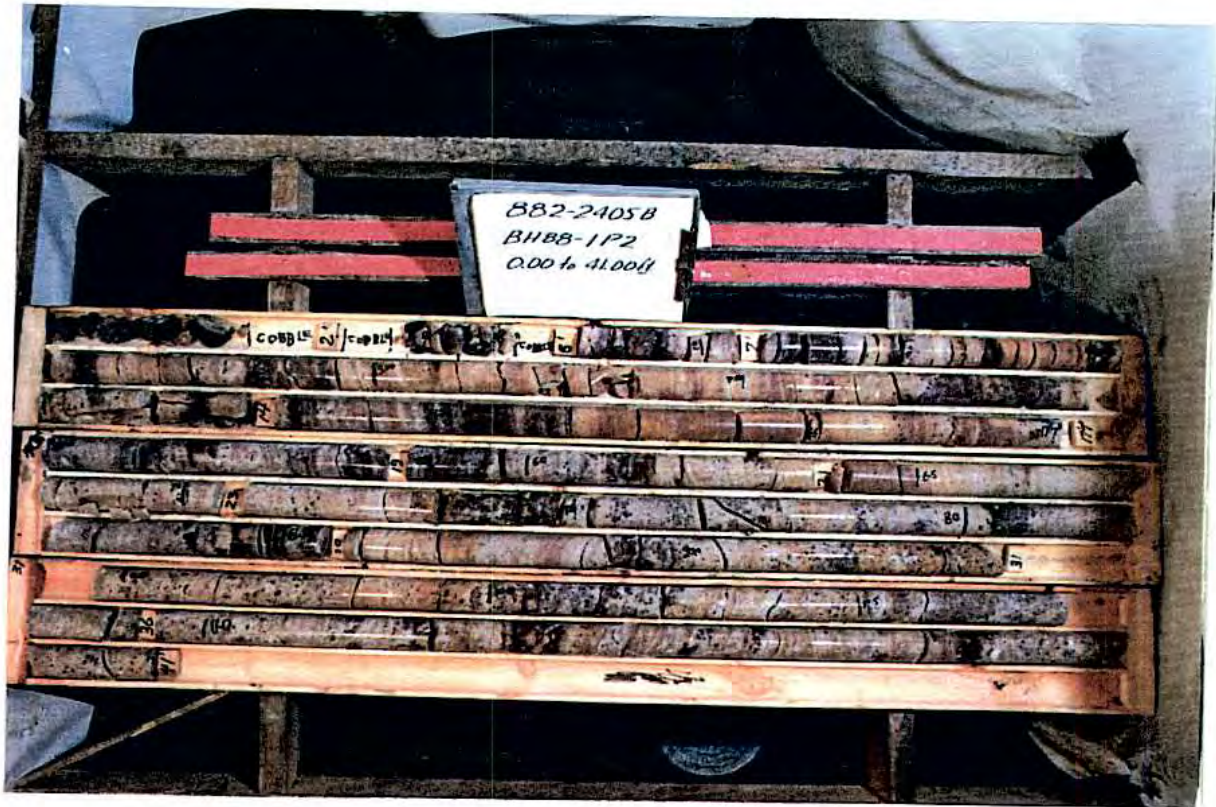
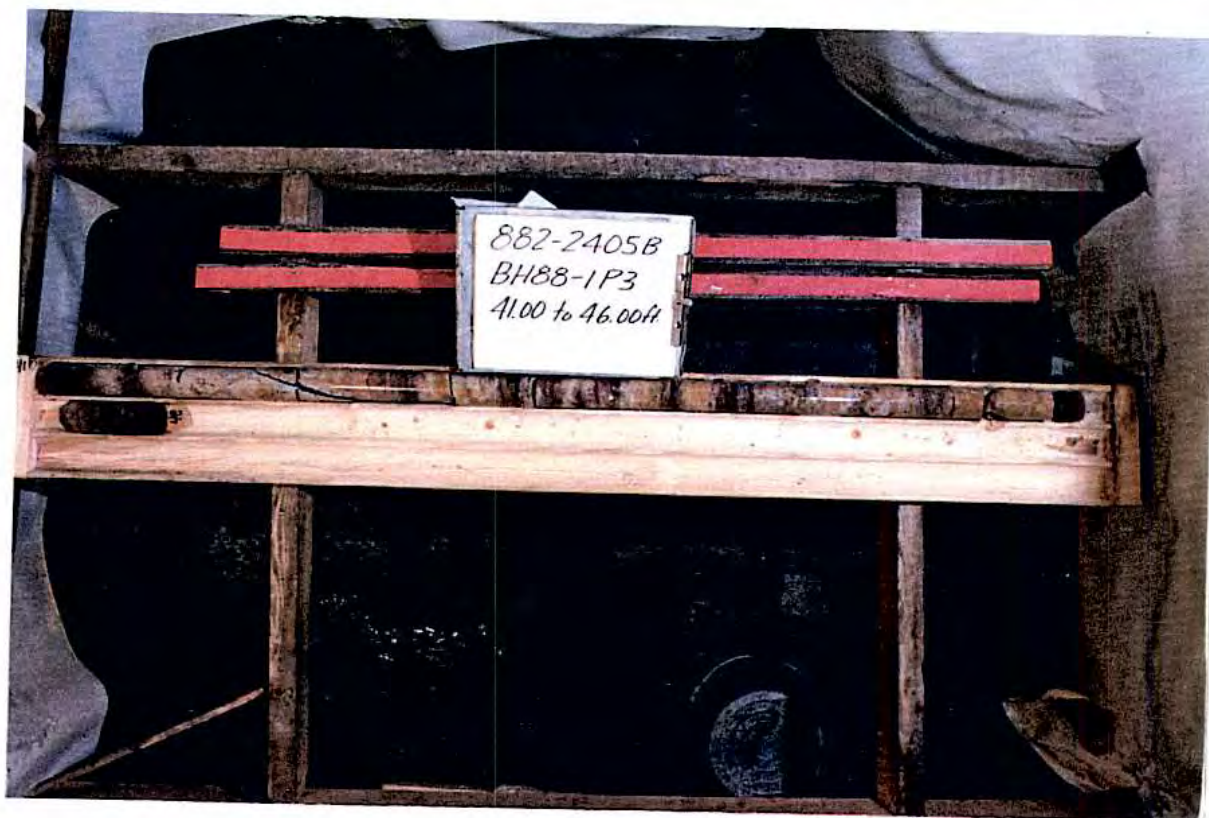
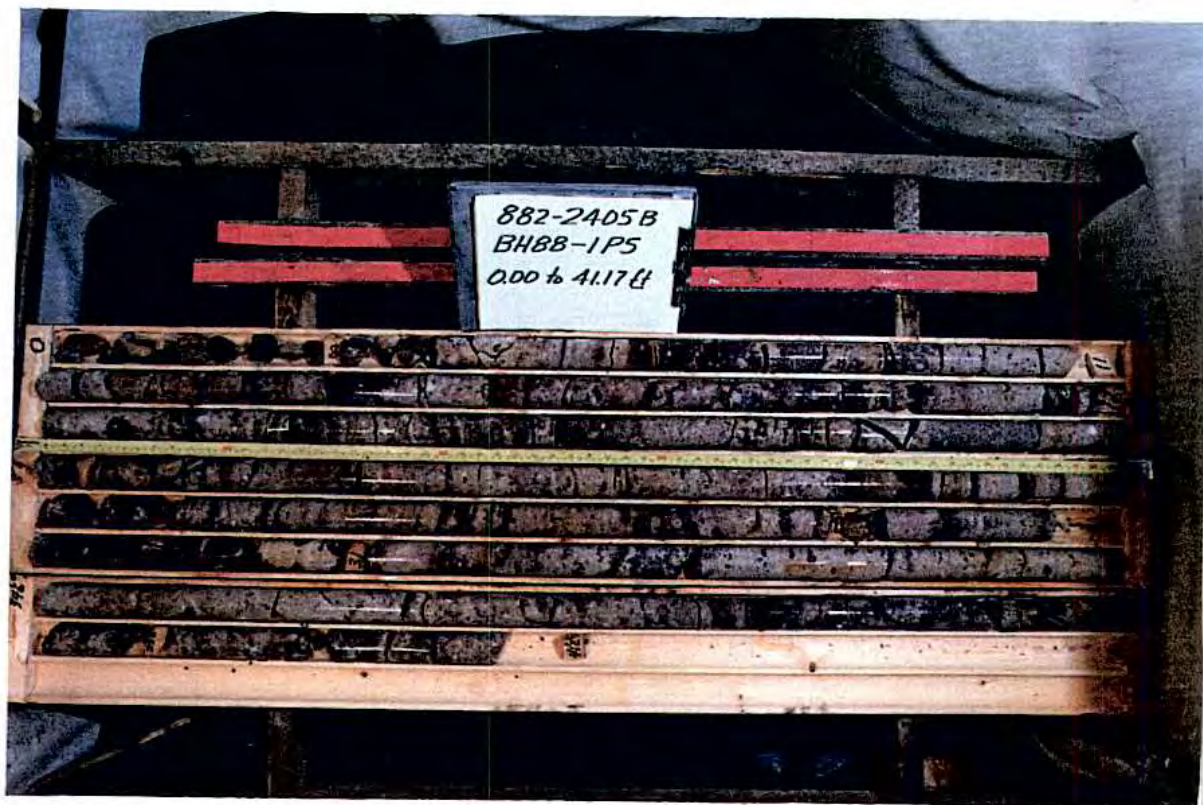


Attachment G Core Photos















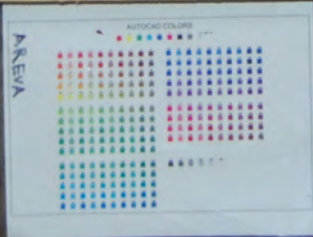


RMI-09-01

BOX #3-4

6.0-12.0m

15-AUG-2013



RM1-09-01

12.0 - 15.0m.

Box #5

13.5

RM1-09-01

15.0 - 18.0m

Box #6

15.0

16.5

RM1-09-01

Box #5-6

12.0 - 13.0m

15-AUG-2008



RMI-09-01

18.0-21.0

Box # 7

18

19.5

RMI-09-01

21.0-24.0

Box # 8

21.5

22.5

24

RMI-09-01

Box # 7-8

18.0m - 24.0m

15-AUG-2009

AREA

AUTOCAD COLORS



RMI-09-01

24.0-27.0m.

Box # 9

25.5

27.2

Box # 10

RMI-09-01

27.0-30.0m.

RMI-09-01

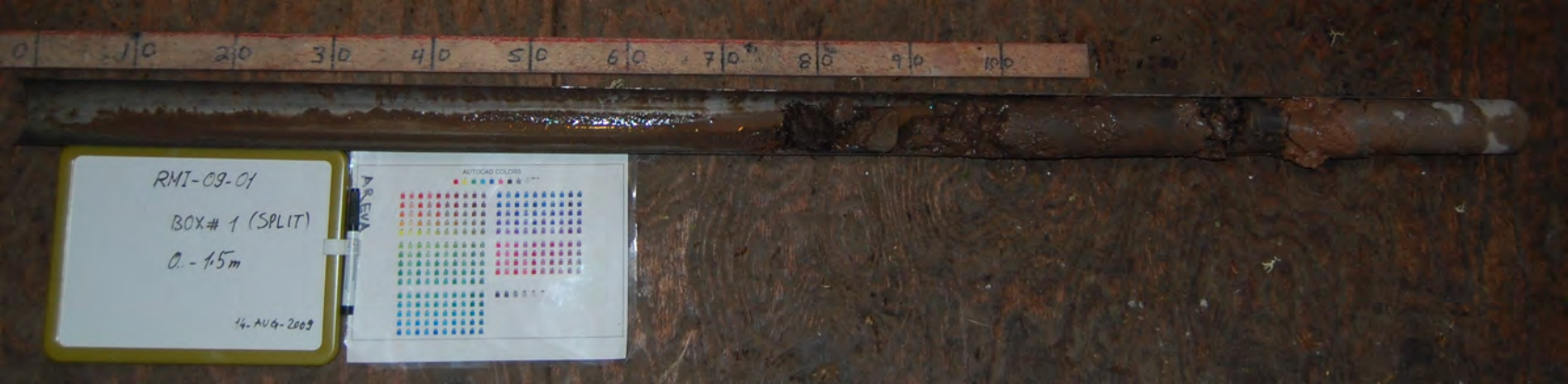
Box # 9-10

24.0-30.0m

15-AUG-2009

AREA





RMI-09-01

BOX# 1 (SPLIT)

0. - 1.5m

14-AUG-2009

AREVA



First Attempt



RMI-09-01

SPLIT

15-30 m

14. AUG-2009

Second Attempt



RMI-09-01

SPLIT

15-30 m

14. AUG-2009



RMI-09-01

SPLIT

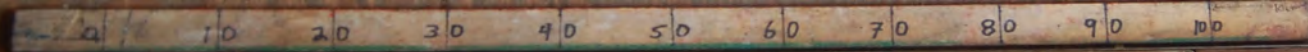
10.5 - 12.0 m

15-AUG-2009

AREVA

AUTOCAD COLORS





RMI-09-01

SPLIT

120-18.5 m

15-AUG-2013



RMI-09-01

SPLIT

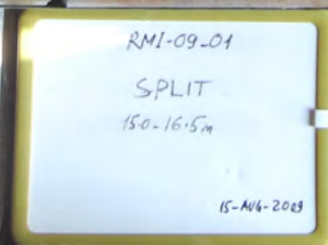
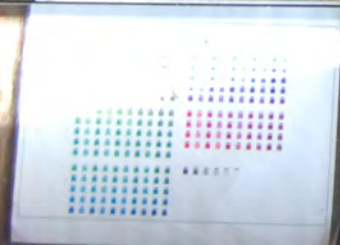
13.5-15.0 m

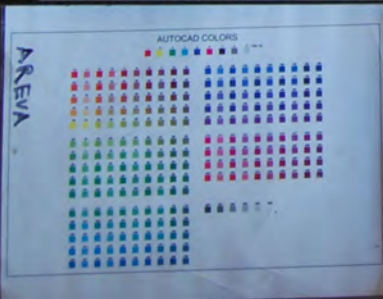
15-AUG-2009

AREVA

AUTOCAD COLOR







RMI-09-01

SPLIT

16.5 - 18.0m

15-AUG-2009





RMI-09-01

SPLIT

18.0 - 19.5m

15-AUG-2009



RMI-G9-01

SPLIT

19.5-21.0 m

15-AUG-2009



RM1-09-01

SPLIT

21.0-22.5m

15-AUG-2009

AREA

AUTOCAD COLORS



10 20 30 40 50 60 70 80 90 100

RMI-09-01

SPLIT

22.5-24.0m

15-AUG-2009

AREA



24m

RMI-09-01

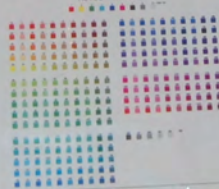
SPLIT

24.0-25.5m

15-AUG-2009

AREVA

AUTOCAD COLORS





RMI-09-01

SPLIT

25.5-27.0m

15-AUG-2009

AREVA



RM1-09-01

SPLIT

27.0-28.5 m

15-AUG-2009

AREA

AUTOCAD COLORS

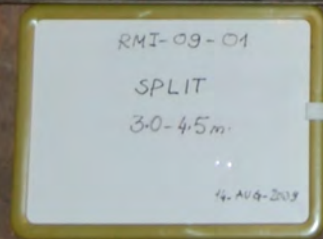
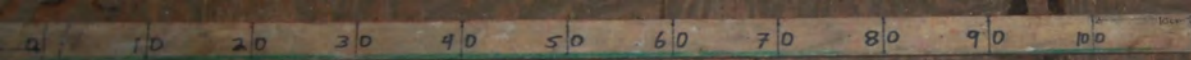


RMI-09-01

SPLIT

28.5m-30.0m

15-AUG-2009





RMI-09-01

SPLIT

4.5-6.0m

14-AUG-2009





RMI-09-01

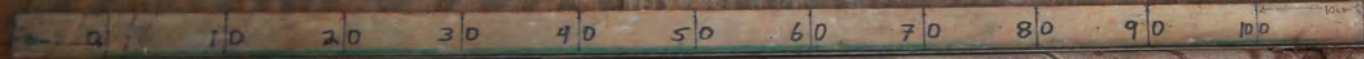
SPLIT

60-7.5m

14-AUG-2009







RMI-09-01

SPLIT

9.0-10.5 m

15-AUG-2009



RMJ-09-02

0.0 - 1.5m

Box #1

Sample #1 0.40-0.55m



RMJ-09-02
Box #1
0.0 - 1.5m
loose BS material is packed with
plastic and prepared to ship
to Saskatoon.
16-AUG-09

10 20 30 40 50 60 70 80 90 100
RMI-09-02

24.90-28.0m

BOX # 10

25.0
26.5

RMI-09-02

28.0-29.5m

BOX # 11

28.0

29.5

RMI-09-02

BOX # 10-11

24.90-29.50m

17-AUG-09

AREVA

AUTOCAD COLORS



RMI-09-02
CORE RUN #1
1.5m to 5.50m

16-AUG-09



RM109-02 Box 2 1.50

4.0

3.0

5.5

5.50

Handwritten labels on the core samples:

- 451
- JN 458 JN 467
- 473
- 483
- JN 499
- 501
- JN 509 JN 517
- JN 520 JN 524
- JN 527
- JN 543
- JN 544

RMI-09-02
Box #3
5.50 to 8.21

16-AUG-09

AREA

AUTOCAD COLORS



RMI09-02 Box 3 5.50



8.21

RMI-09-02

Box # 4

8.21 to 10.93

16-JG-09

AREA

AUTOCAD COLORS



RMI09-02

Box 4

8.21



RMI-09-02
Box #5
10.93 to 13.61

16-AUG-09



RM109-02

Box 5

10.93



JW
11.11



11.5



JW
11.62



JW
12.01

JW
12.13



JW
12.63

JW
12.96

13



JW
13.18



JW
13.36

JW
13.51



13.61

RMI-09-02
Box #6
13.61 to 16.47

16-AUG-09

AREVA

AUTOCAD COLORS



RMI09-02

Box 6

13.61



16.47

RM109-01
Box #7
16.47 to 19.00m

16-AUG-09

AREA

AUTOCAD COLORS



RM109-02

Box 7

16.47

JN
16.55

JN
16.91

JN
17.02

JN
17.18

JN
17.27

JN
17.49

17.5

JN
17.65

JN
17.67

18m

JN
18.05

JN
18.08

JN
18.26

JN
18.56

19

19.00

RM109-02 Box 8

19.00 - 23.5m - 22.0m

JN 115

JN 113

JN 115

JN 1140

JN 1173

20m

20m

20.5

BC 2067

BC 2067

JN 2009 20m

JN 2109

JN 2115

Box #9

23.5 - 24.90m

22.0

23.5

24.90m



RM1-09-02
BOX # 8-9
19.0 - 24.90m
17-AUG-09