

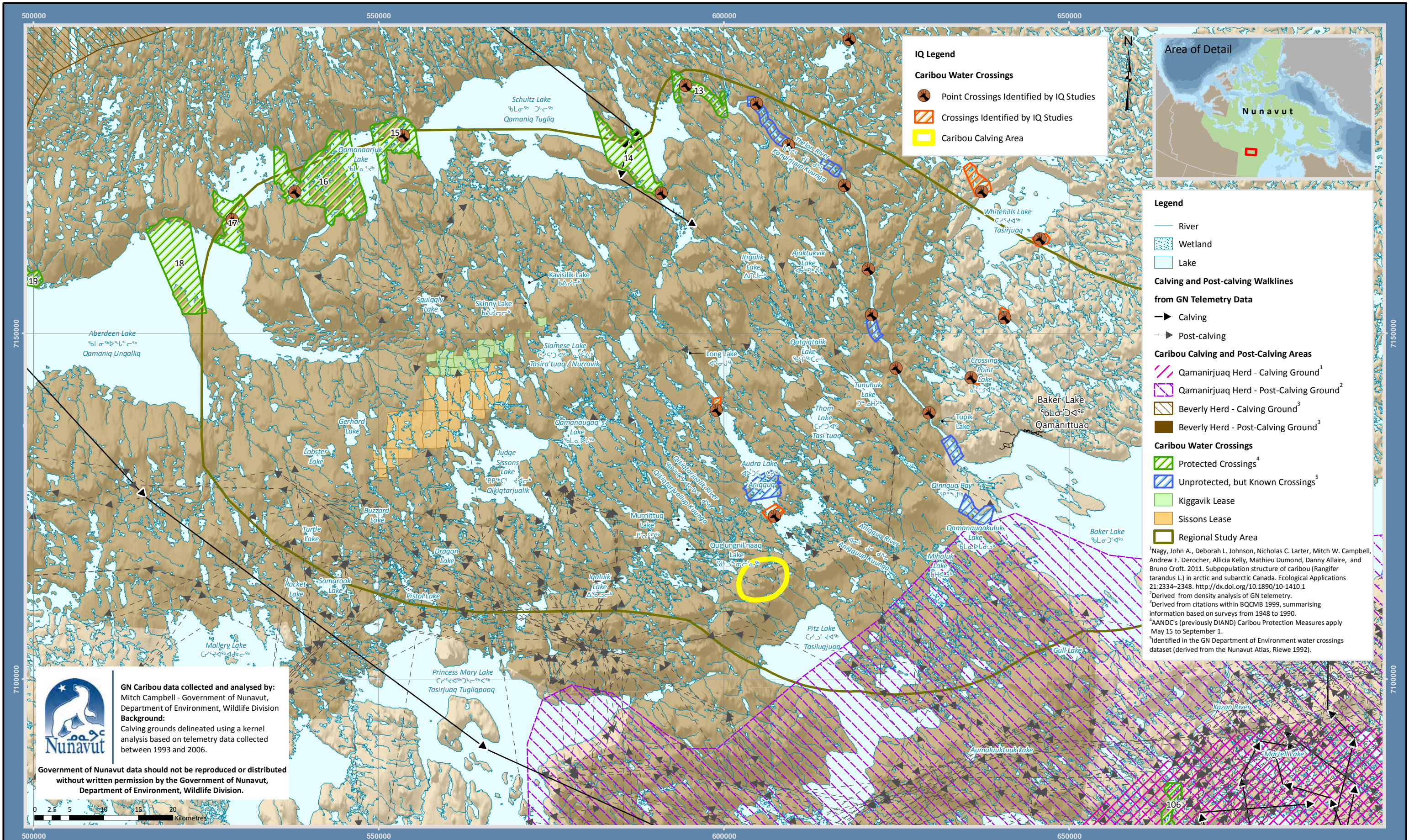
Projection: NAD 1983 UTM Zone 14N  
Creator: CASLYS CONSULTING LTD.  
Date: 05/02/2014 Scale: 1:500,000  
File: 5.7-10\_Caribou\_Info\_Inuit\_Qaujimajatuqangit.mxd  
Data Sources: Natural Resources Canada, GeoBase™, National Topographic Database, AREVA Resources Canada Inc., INAC, Baker Lake Hunter Focus Group, Arviat Elders Focus Group, Gebauer & Associates, Golder Associates Ltd.

**FIGURE 5.7-10**  
INUIT QAUJIMAJATUQANGIT ON CARIBOU MOVEMENTS AND  
WATER CROSSINGS WITHIN THE REGIONAL STUDY AREA  
**KIGGAVIK PROJECT - EIS**







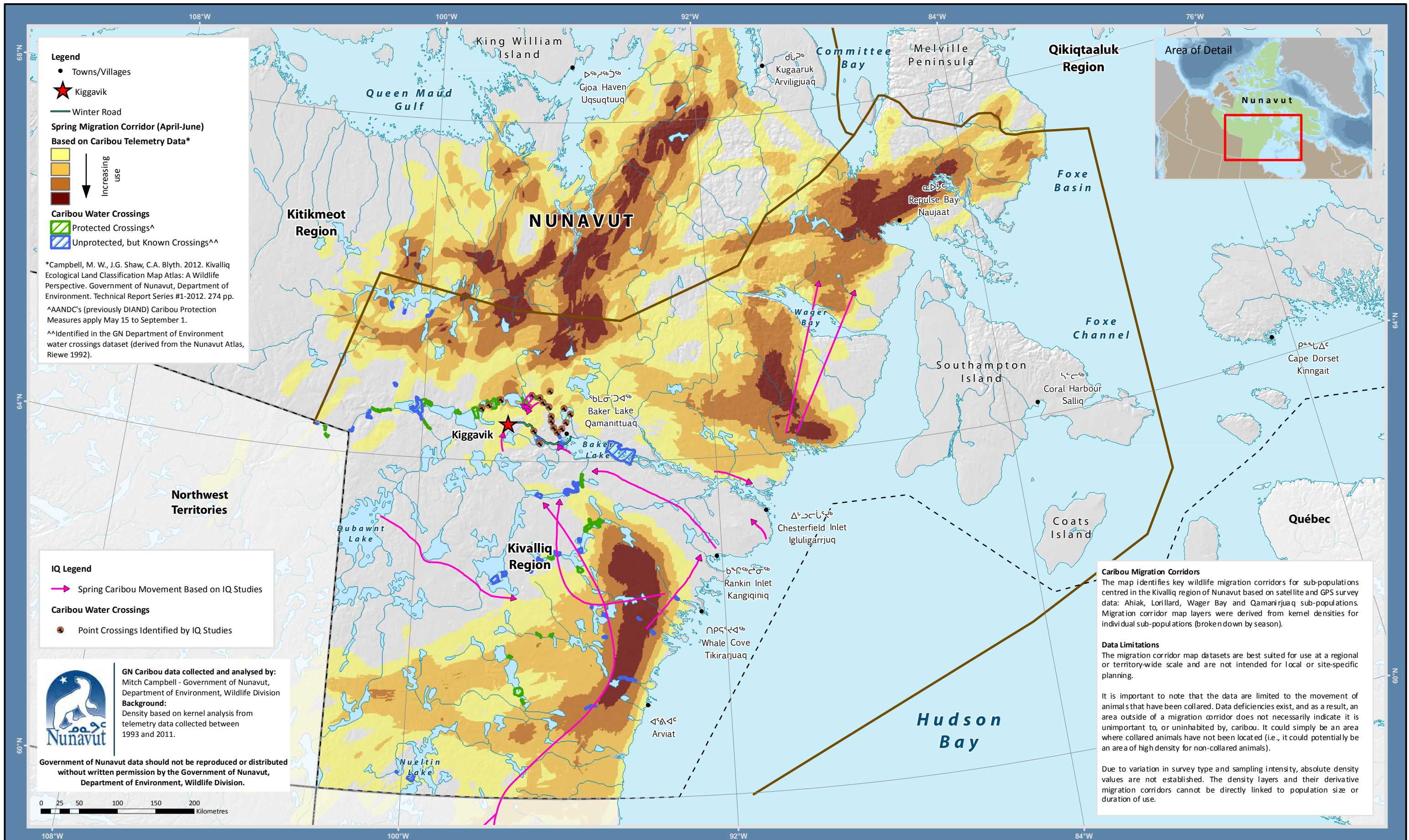


**FIGURE 5.7-11**  
CALVING AREAS NEAR THE RSA AND CARIBOU OCCURRENCE  
DURING CALVING SEASON (MAY 26 TO JUNE 25)

KIGGAVIK PROJECT - EIS







**FIGURE 5.7-12A**  
CARIBOU SPRING MIGRATION CORRIDORS (BASED ON GOVERNMENT OF NUNAVUT TELEMETRY DATA)  
WITH SPRING CARIBOU MIGRATION FROM IQ STUDIES

KIGGAVIK PROJECT - EIS

Projection: Canada Lambert Conformal Conic  
Creator: CASLYS CONSULTING LTD.  
Date: 05/01/2014 Scale: 1:4,99,998  
File: 5-7-12A\_Caribou\_IQ\_Spring\_Migration\_Corridors.mxd  
Data Sources: Natural Resources Canada, GeoBase®, National Topographic Database, AREVA Resources Canada Inc., Government of Nunavut, Gebauer & Associates, Golder Associates Ltd.

Gebauer & Associates  
ENVIRONMENTAL CONSULTANTS

CASLYS  
CONSULTING

AREVA

AREVA Resources Canada Inc. - P.O. Box 9204 - 817 - 45th Street West - Saskatoon, SK - S7N 3X5









