

Attachment A Sample Field Survey Forms

AREVA – HEIGHT-OF-LAND SURVEYS - 2009

Time Started _____ Time Ended _____ Page _____ of _____

Date (dd/mm/yy) _____ **Observer Names:** _____

Temperature	Wind Speed	Wind Direction	Visibility	Precipitation
72°F	15 mph	SE	10 miles	0.0 inches
75°F	20 mph	SSE	10 miles	0.0 inches
78°F	25 mph	SSE	10 miles	0.0 inches
80°F	30 mph	SSE	10 miles	0.0 inches
82°F	35 mph	SSE	10 miles	0.0 inches
85°F	40 mph	SSE	10 miles	0.0 inches
88°F	45 mph	SSE	10 miles	0.0 inches
90°F	50 mph	SSE	10 miles	0.0 inches
92°F	55 mph	SSE	10 miles	0.0 inches
95°F	60 mph	SSE	10 miles	0.0 inches
98°F	65 mph	SSE	10 miles	0.0 inches
100°F	70 mph	SSE	10 miles	0.0 inches

[illegible]

¹ **Sex** = M (male) or F (female); **Age** = C (calf), Y (yearling) or A (adult)

² **Habitat** = WA (water), SE (sedge), BR (birch/riparian shrub), HT (heath tundra), LI (lichen), LR (lichen-rock), RC (ridge crest/esker), RO (rock/ boulder), and DI (disturbed).

³ **Observation Types:** visual (animals seen), tracks, pellets, scat, feather, burrow, den, antler, bones, carcass, call, fur etc.

⁴ **Direction of Travel** = NA (not applicable), N, NE, E, SE, S, SW, W, NW

⁵ **Behaviour** = RE (resting), FO (foraging), WK (walking), RU (running), ST (standing), MI (milling), and CO (courting)

PRISM RAPID SURVEY SUMMARY FORM (1 per plot)

Site: _____ Plot: _____ Date: _____ Time In: _____ Out: _____ Surveyor: _____

Incidentals²: _____

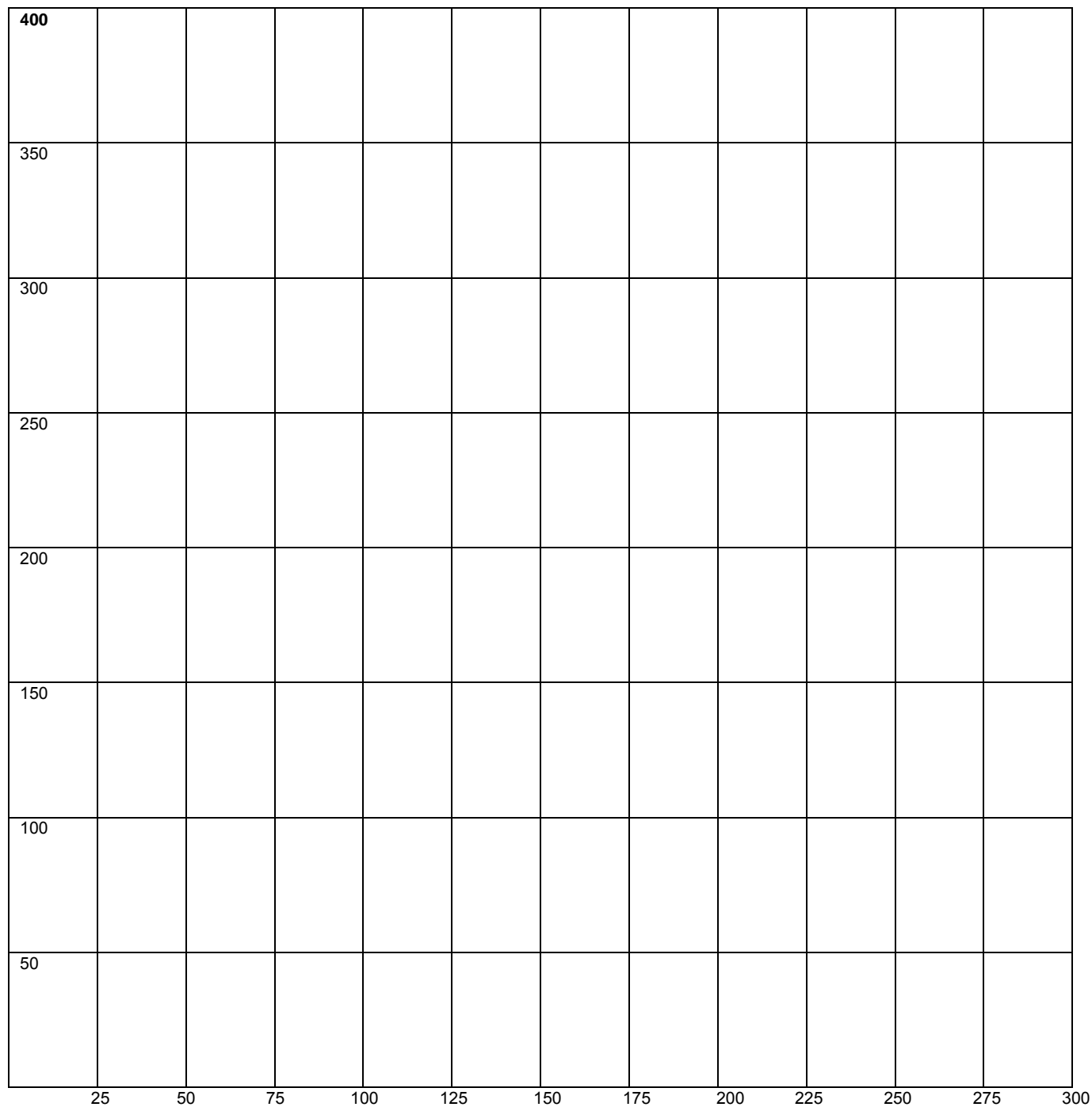
Comments: _____

Species	Nests including pair	Prob Nest including pair ³	Prs ⁴	Males	Females	??? sex	Total no. pairs & indicated pairs ⁵	Estimate ⁶
comments (how did you arrive at final estimate?)								
comments (how did you arrive at final estimate?)								
comments (how did you arrive at final estimate?)								
comments (how did you arrive at final estimate?)								
comments (how did you arrive at final estimate?)								
comments (how did you arrive at final estimate?)								

² Notable species seen off the plot; Note: flybys and off transect birds can also be added as separate lines at the end of each days form. Ensure to make a line between on plot data and these birds and label it INCIDENTALS BELOW in big letters. ³ Only used when a nest distraction display was seen. ⁴ Do not record a pair that was associated with a nest. They are represented by the nest. ⁵ Sum of the rows to the left ⁶ Estimated number of nests, pairs without nests and "indicated" pairs (territorial males, lone females) which are believed to be truly associated with the plot (assumed to be on plot at beginning of survey)

PRISM PLOT MAP- RAPID SURVEYS (1 per plot)

Site:_____ Plot:_____ Date:_____ Time In:_____ Out:_____ Surveyors:_____



Coordinates: SW

NW

NE

SE

AREVA RESOURCES CANADA – BREEDING BIRD TRANSECTS – 2009

Date (dd/mm/yy) _____ **Time Started:** _____ **Time Ended:** _____

Observer Names: _____ Page ____ of ____

Transect # _____ **South Start Coordinate** _____ **North End Coordinate** _____

East West Coordinate on access Road _____

Temperature:_____ **Wind Speed**_____ **Wind Direction** _____ **Precipitation** _____

[illegible]

SUMMARY DATA SMALL MAMMAL SURVEY

Study Area:

Coordinates:

Changes in location or methods from previous year:

Date	No. Traps Set	Total No. Captures	No. Misfires	No. Non-Targets	Species Caught	Comments
TOTALS						

Effective Trap Nights = Traps set – Misfires – Non-targets =

Capture Index = (Total Captures / Effective Trap Nights) X 100 =

Comments/Problems/Traditional Knowledge/Suggestions:

RAW DATA SMALL MAMMAL SURVEY

Transect #:

Habitat

Date:

Coordinates:**Site #:**[illegible]

KIGGAVIK SISSONS WILDLIFE LOG

Month _____

Page ____ of ____

[illegible]

Attachment B Hunter Harvest Study Detailed Methods

Attachment B

Hunter Harvest Study Detailed Methods

The Hunter Harvest Study (HHS) is an integral part of the baseline and operational wildlife monitoring and management programs, serving to track the spatial distribution, seasonal patterns, and harvest rates of hunter kills both before and after construction of project and project-related facilities. The HHS has similarities to the Nunavut Wildlife Harvest Study (NWMB 2005) and the Inuvialuit Harvest Study conducted between 1988-1997 (NWT Fisheries and Joint Fisheries Committee 2003); however, it is limited to one community (Baker Lake) and focuses on three wildlife species (Muskox, Caribou, and Wolverine) and four fish species (i.e., Arctic Char, Lake Trout, Lake Whitefish, and Arctic Grayling), which are central to Inuit culture.

Objectives

The specific objectives of the HHS were to:

- Gather information on caribou, muskox, and wolverine harvest rates (i.e., animals retrieved) and Inuit-use patterns in the Baker Lake area;
- Gather information on Arctic char, lake trout, lake whitefish, and Arctic grayling catch rates and Inuit-use patterns in the Baker Lake area;
- Understand regional distribution of hunting and fishing activity;
- Investigate seasonal timing of hunting and fishing activity;
- Determine whether changes in harvest and catch rates are associated with the project;
- Assess overall impacts of project-related activities and facilities on caribou, muskox, wolverine, and fish populations; and
- Help make informed decisions regarding fish and wildlife management in the Baker Lake area to verify that the key species are adequately protected.

Changes in local hunting patterns, if any, will be identified over time as a result of the study. If potential impacts are identified over the course of monitoring efforts, adaptive management strategies may be implemented to mitigate residual effects.

Hunter Harvest Study

Central to the HHS is the harvest calendar, which is used by hunters to enter their harvest details. The harvest calendar is attractive and consists of local photographs of wildlife and Baker Lake residents (see sample calendar at end of this attachment). At the back of the calendar, a reference map of the Baker Lake area is provided, constituting a total study area of 7,912 km². Each grid cell (UTM grid) within the reference map equates to an area of 4 km² and has a unique code to facilitate recording of information. When calendars are issued, participants / participating households are encouraged to write harvest details (e.g., number of animals, sex,

age and location [i.e., grid code]) within the appropriate calendar date. Calendars are issued on a household basis rather than an individual basis in order to simplify data entry and collection. Typically, a new calendar is provided when the previous year's calendar is collected to encourage continued study participation. New participants are encouraged to pick up a calendar at designated locations throughout Baker Lake, including the HTO, designated residences, and the project office.

Hunter Harvest Calendar

Each year, the HHS is promoted by placing posters at high-traffic, public locations within the community and by providing a newsletter to select households in both English and Inuktitut. Radio announcements are also made at opportune times. To reward participation, active participants are provided with one raffle ticket for each month of involvement. At the end of each study year, a draw is held for a number of high quality prizes that are of interest to both hunters and anglers. The prize winners are announced on the radio at varying times to maximize listenership, which generates positive discussion within the community, often resulting in additional participation. Where possible, prizes are hand delivered the following day.

Hunter Involvement

Both Inuit and non-Inuit Baker Lake residents, at least 16 years of age, are eligible to participate in the harvest study. In 2009, approximately thirty-five (35) participants were actively involved in the study, which equates to approximately 5-10% of eligible Baker Lake hunters (based on the current HTO member list). Participation continues to increase each year with minimal attrition, which is due to on-going promotions, periodic radio announcements, regular visits, word-of-mouth, the annual prize draw, and HTO involvement.

Data Collection and Timing

The HHS typically involves four trips to Baker Lake (January, May, July, and October), which may increase in subsequent years contingent on involvement. A translator is often required during the interview process, particularly for older participants and elders. The translator is typically scheduled for a full day and attempts are made to interview all participants requiring a translator within that time.

During the January trip, calendars from the previous year are collected. Any additional data (i.e., from hunting trips that occurred in November or December of the previous year) are recorded on data entry sheets for subsequent entry into the HHS database. The level of involvement (i.e., the number of months that information was recorded in a calendar) is tabulated for each participant during this trip and prizes are distributed as described above. Hunters are also provided with the next year's calendar and encouraged to participate.

In late April or early May, participants are contacted via telephone and/or email and appointments are scheduled in advance of arrival to Baker Lake, where possible, to remind

participants to have the calendar ready and up-to-date, as well as to establish a tentative interview schedule. Reattempts to contact all remaining participants are made upon arrival in Baker Lake. Each interview takes approximately one (1) hour to complete. The interview consists of short discussions on both personal and hunting-related topics, which serve to build and maintain a mutually beneficial and respectful relationship with the hunters. Incidental information collected during the interview process serves to compliment calendar data, including notable Caribou movements, aggregations and unique observations. During each interview, all data written in the calendar between January and May is recorded on data entry sheets. Promotional material (flyers, posters, etc.) is displayed at public locations and a radio address is made to inform Baker Lake residents of the study's purpose and benefits. Visits are also made to the HTO to ascertain the level of interest from hunters and to identify any additional areas for improvement.

The July visit typically consists of a short courtesy visit to remind hunters to record their hunting information in the calendar after each hunting trip. No data is collected during this visit; however, attempts are made to briefly discuss hunting trends and general observations with each hunter. Promotional material (flyers, posters, etc.) is displayed at public locations and a radio address is made to inform Baker Lake residents of the study's purpose and benefits.

The October visit largely mirrors the May visit. Specifically, attempts are made to contact hunters prior to arrival in Baker Lake. Data is recorded from available participant's calendars for the period between May and October. Those participants that cannot be reached during the October trip are given a hand-written note, email, or voice mail, reminding them about the calendar, the next scheduled trip, and the prize draw. Visits are also made to the HTO to ascertain the level of interest from hunters and to identify any additional areas for improvement.

File: TWBR/Attachment B Harvest Calendar

Baker Lake Harvest Study

2010

$\epsilon_b L \sigma \rhd \triangleleft^{\epsilon_f} \Gamma$ $\triangleleft^{a_u} J_{\underline{a}} r^b \sigma^{\epsilon_f} \rfloor^c$ $\epsilon_b \triangleright \tau^{\epsilon_h} \sigma^{\epsilon_b}$



Baker Lake Harvest Study

How to Use the Baker Lake Harvest Calendar

Agnico-Eagle Mines Ltd., and Areva Resources Canada Inc., in cooperation with the Baker Lake Hunters and Trappers Organization (HTO), want to understand the patterns of hunting and fishing by local Baker Lake residents. Specifically, we want to understand how the Meadowbank Gold Project, located 75 km north of Baker Lake, and the proposed Kiggavik Uranium Project, located 80 km west of Baker Lake, might change traditional hunting and harvesting patterns. To ensure that traditional hunting and fishing activities are not adversely affected, we have developed this annual Hunter Harvest calendar, which is used to record hunting information throughout each year.

Near the back of the calendar is a page that shows the wildlife and fish that are included in the study. Please write down the number, sex, and location of harvested animals or fish on the corresponding date. When writing down the location, please use the XY coordinate system provided on the six maps at the back of the calendar. For example:

If you harvested a male caribou on January 16th on Big Hips Island you would write-down “1 male caribou, AF19” in the January 16th square of the calendar.

You will also be visited by the hunter harvest field worker periodically throughout the year. The worker’s job will be much easier if you write down your harvest information in the calendar as soon as possible.

At the end of each year, please return the calendar to the Agnico-Eagle office in Baker Lake to be entered in the year-end prize draw. For each month of participation, you will be entitled to one raffle ticket. The draw will be held in January each year, for a number of quality prizes.

If you have any questions, please contact the Baker Lake Harvest Study field technician, Michael Haqpi at 867-793-4610 (mhaqpi@agnico-eagle.com) or Chris Lee at 604-357-3475 (clee@telus.net).

$\sigma \in \Sigma$

\mathbb{R}^b_{\leq} $\triangleright \leq \mathbb{R}^b \triangleright^C$ $\triangleleft \mathbb{C} \triangleleft \mathbb{R}^b \triangleleft$

[illegible][illegible][illegible]
$$\Delta \subset \sigma^b \quad \wedge \tau \subset \tau^b \quad \triangleright \langle \tau \subset \tau^b \rangle \text{ is a } \mathcal{C} \text{ of } \sigma^b \quad \triangleright \rho \triangleright \tau \quad \Delta b \in \tau \langle \tau^b \rangle \supset \sigma. \quad \Delta b \in \sigma^b \text{ is } \tau^b \supset \sigma^b \quad \sigma^b \in \mathcal{C} \quad \wedge \mathcal{C}^b \in \mathcal{C} \quad \text{then } \sigma^b \in \mathcal{C} \supset \sigma.$$
[illegible]

ᐅᖃᐅᓯᖃᖃᐅᐱᑦ, ᐱᐱᖃᓯᓂᖃᖃᐅᐱᑦᐅᑦ ᓂᓂᑦᐱᖃ ᖃᑦᑦᓯᖃ ᐅᖃᐅᐱᑦ ᐱᐱᐅ ᐱᐱᖃᐱᑦ, ᐅᖃᐅᓂᖃ 867-793-4610 ᑦᐱᐅᐅ 6611. ᖃᓕᐅᐅᐅᑦ ᐅᖃᖃᓂᐱᑦᐱᑦ ᐅᑦ ᐅᑦᐱᓂᖃ; mhaqqi@agnico-eagle.com ᐅᖃᐅᓂᐱᑦ ᖃᓕᐅᐅᐅᑦ ᐅᖃᐅᐱᐅᐅᑦᐱᑦᐱᑦ ᐅᓕᓯ ᑦ ᐅᖃᐅᓂᖃ 604-357-3475 ᖃᓕᐅᐅᐅᑦ cleee@telus.net.



Winter Sun

Damian Power

January | ๒๐๑๐

Baker Lake Harvest Study

Sunday ᠰᠠᠳᠤᠳᠤ	Monday ᠰᠠᠳᠤᠳᠤᠨᠪᠤᠰᠤᠬᠡᠭᠢᠨ	Tuesday ᠳᠤᠨᠢᠶ᠋ᠠᠨᠠᠨᠢᠨᠠᠨ	Wednesday ᠠᠨᠢᠯᠠᠨᠠᠨᠠᠨ	Thursday ᠰᠤᠴᠤᠯᠤᠰ	Friday ᠴᠤᠯᠤᠰ	Saturday ᠰᠤᠪᠠᠳᠤᠶ᠋ᠠᠨ
December 2009	February 2010					
S M T W T F S	S M T W T F S					
	1 2 3 4 5	1 2 3 4 5 6				
6 7 8 9 10 11 12	7 8 9 10 11 12 13					
13 14 15 16 17 18 19	14 15 16 17 18 19 20					
20 21 22 23 24 25 26	21 22 23 24 25 26 27					
27 28 29 30 31	28					
3	4	5	6	7	8	9
10	11	12	13	14	15	16
17	18	19	20	21	22	23
24	25	26	27	28	29	30
31						



Windblown Cottongrass

Shannon McFadyen

February | 2010

Baker Lake Harvest Study

Sunday ከሐርልፍ	Monday ከሐርልፍጋሪባሽዮን	Tuesday ጋሪባሽዮን ምድርዮን	Wednesday እስክራሽዮን	Thursday ሥርዓት	Friday ርዕሰ ዓመት	Saturday ምድርዮን ምድርዮን																																																																																											
	1	2 Groundhog Day	3	4	5	6																																																																																											
7	8	9	10	11	12	13																																																																																											
14 Valentine's Day	15	16	17 Ash Wednesday	18	19	20																																																																																											
21	22	23	24	25	26	27																																																																																											
28	<div>January 2010</div> <table><tr><td>S</td><td>M</td><td>T</td><td>W</td><td>T</td><td>F</td><td>S</td></tr><tr><td></td><td></td><td></td><td></td><td></td><td>1</td><td>2</td></tr><tr><td>3</td><td>4</td><td>5</td><td>6</td><td>7</td><td>8</td><td>9</td></tr><tr><td>10</td><td>11</td><td>12</td><td>13</td><td>14</td><td>15</td><td>16</td></tr><tr><td>17</td><td>18</td><td>19</td><td>20</td><td>21</td><td>22</td><td>23</td></tr><tr><td>24</td><td>25</td><td>26</td><td>27</td><td>28</td><td>29</td><td>30</td></tr><tr><td>31</td><td></td><td></td><td></td><td></td><td></td><td></td></tr></table> <div>March 2010</div> <table><tr><td>S</td><td>M</td><td>T</td><td>W</td><td>T</td><td>F</td><td>S</td></tr><tr><td></td><td>1</td><td>2</td><td>3</td><td>4</td><td>5</td><td>6</td></tr><tr><td>7</td><td>8</td><td>9</td><td>10</td><td>11</td><td>12</td><td>13</td></tr><tr><td>14</td><td>15</td><td>16</td><td>17</td><td>18</td><td>19</td><td>20</td></tr><tr><td>21</td><td>22</td><td>23</td><td>24</td><td>25</td><td>26</td><td>27</td></tr><tr><td>28</td><td>29</td><td>30</td><td>31</td><td></td><td></td><td></td></tr></table>						S	M	T	W	T	F	S						1	2	3	4	5	6	7	8	9	10	11	12	13	14	15	16	17	18	19	20	21	22	23	24	25	26	27	28	29	30	31							S	M	T	W	T	F	S		1	2	3	4	5	6	7	8	9	10	11	12	13	14	15	16	17	18	19	20	21	22	23	24	25	26	27	28	29	30	31			
S	M	T	W	T	F	S																																																																																											
					1	2																																																																																											
3	4	5	6	7	8	9																																																																																											
10	11	12	13	14	15	16																																																																																											
17	18	19	20	21	22	23																																																																																											
24	25	26	27	28	29	30																																																																																											
31																																																																																																	
S	M	T	W	T	F	S																																																																																											
	1	2	3	4	5	6																																																																																											
7	8	9	10	11	12	13																																																																																											
14	15	16	17	18	19	20																																																																																											
21	22	23	24	25	26	27																																																																																											
28	29	30	31																																																																																														



Caribou Bull

Shannon McFadyen

March | 2010

Baker Lake Harvest Study

Sunday ካባር	Monday ከረርሽኤ	Tuesday ዐገረኤ ሥኔ	Wednesday ጸሐይ	Thursday ሥርዐት	Friday ርረር	Saturday ሙዕል																																																																																				
	1	2	3	4	5	6																																																																																				
7	8	9	10	11	12	13																																																																																				
14	15	16	17	18	19	20																																																																																				
Daylight Savings Time Begins			St. Patrick's Day			First Day of Spring																																																																																				
21	22	23	24	25	26	27																																																																																				
28	29	30	31	<div>February 2010</div> <table><tr><td>S</td><td>M</td><td>T</td><td>W</td><td>T</td><td>F</td><td>S</td></tr><tr><td></td><td>1</td><td>2</td><td>3</td><td>4</td><td>5</td><td>6</td></tr><tr><td>7</td><td>8</td><td>9</td><td>10</td><td>11</td><td>12</td><td>13</td></tr><tr><td>14</td><td>15</td><td>16</td><td>17</td><td>18</td><td>19</td><td>20</td></tr><tr><td>21</td><td>22</td><td>23</td><td>24</td><td>25</td><td>26</td><td>27</td></tr><tr><td>28</td><td></td><td></td><td></td><td></td><td></td><td></td></tr></table> <div>April 2010</div> <table><tr><td>S</td><td>M</td><td>T</td><td>W</td><td>T</td><td>F</td><td>S</td></tr><tr><td></td><td></td><td></td><td></td><td>1</td><td>2</td><td>3</td></tr><tr><td>4</td><td>5</td><td>6</td><td>7</td><td>8</td><td>9</td><td>10</td></tr><tr><td>11</td><td>12</td><td>13</td><td>14</td><td>15</td><td>16</td><td>17</td></tr><tr><td>18</td><td>19</td><td>20</td><td>21</td><td>22</td><td>23</td><td>24</td></tr><tr><td>25</td><td>26</td><td>27</td><td>28</td><td>29</td><td>30</td><td></td></tr></table>			S	M	T	W	T	F	S		1	2	3	4	5	6	7	8	9	10	11	12	13	14	15	16	17	18	19	20	21	22	23	24	25	26	27	28							S	M	T	W	T	F	S					1	2	3	4	5	6	7	8	9	10	11	12	13	14	15	16	17	18	19	20	21	22	23	24	25	26	27	28	29	30	
S	M	T	W	T	F	S																																																																																				
	1	2	3	4	5	6																																																																																				
7	8	9	10	11	12	13																																																																																				
14	15	16	17	18	19	20																																																																																				
21	22	23	24	25	26	27																																																																																				
28																																																																																										
S	M	T	W	T	F	S																																																																																				
				1	2	3																																																																																				
4	5	6	7	8	9	10																																																																																				
11	12	13	14	15	16	17																																																																																				
18	19	20	21	22	23	24																																																																																				
25	26	27	28	29	30																																																																																					
Palm Sunday		Passover																																																																																								



Ermine in Winter Coat

Shannon McFadyen

April | ᐱᐃᐅᐅ 2010

Baker Lake Harvest Study
ᖃᐅᐅᐅᐅᐅᐅ ᐱᐅᐅᐅᐅᐅᐅᐅᐅ ᖃᐅᐅᐅᐅᐅᐅᐅᐅ

Sunday ᐅᐅᐅᐅᐅ							Monday ᐅᐅᐅᐅᐅᐅᐅᐅᐅᐅᐅ							Tuesday ᐅᐅᐅᐅᐅᐅᐅᐅ ᐅᐅᐅᐅᐅᐅᐅᐅ							Wednesday ᐅᐅᐅᐅᐅᐅᐅ							Thursday ᐅᐅᐅᐅᐅ							Friday ᐅᐅᐅᐅᐅ							Saturday ᐅᐅᐅᐅᐅᐅᐅᐅᐅᐅ																											
March 2010														May 2010														1														2														3													
S	M	T	W	T	F	S	S	M	T	W	T	F	S																																																								
	1	2	3	4	5	6							1																																																								
7	8	9	10	11	12	13	2	3	4	5	6	7	8																																																								
14	15	16	17	18	19	20	9	10	11	12	13	14	15																																																								
21	22	23	24	25	26	27	16	17	18	19	20	21	22																																																								
28	29	30	31				23	24	25	26	27	28	29															April Fool's Day														Good Friday																											
							30	31																																																													
4							5							6							7							8							9							10																											
Easter Sunday							Easter Monday																																																														
11							12							13							14							15							16							17																											
18							19							20							21							22							23							24																											
																												Earth Day																																									
25							26							27							28							29							30																																		



May | LΔ 2010

Baker Lake Harvest Study

Sunday ᑭᐱᓕᐃᓕ	Monday ᑭᐱᓕᐃᓕᔨᓂᑭᑲ	Tuesday ᑭᑲᑭᐃᑳᐱᑳ ᑭᑲᓕᑳ	Wednesday ᐱᑲᓴᓴᐃᓕ	Thursday ᑭᓕᓴᓕ	Friday ᓕᓕᓴᓕ	Saturday ᓂᑳᐃᑭᐱᑳ																																																																																				
<div>April 2010</div> <table><tr><td>S</td><td>M</td><td>T</td><td>W</td><td>T</td><td>F</td><td>S</td></tr><tr><td></td><td></td><td></td><td></td><td>1</td><td>2</td><td>3</td></tr><tr><td>4</td><td>5</td><td>6</td><td>7</td><td>8</td><td>9</td><td>10</td></tr><tr><td>11</td><td>12</td><td>13</td><td>14</td><td>15</td><td>16</td><td>17</td></tr><tr><td>18</td><td>19</td><td>20</td><td>21</td><td>22</td><td>23</td><td>24</td></tr><tr><td>25</td><td>26</td><td>27</td><td>28</td><td>29</td><td>30</td><td></td></tr></table>						S	M	T	W	T	F	S					1	2	3	4	5	6	7	8	9	10	11	12	13	14	15	16	17	18	19	20	21	22	23	24	25	26	27	28	29	30		<div>June 2010</div> <table><tr><td>S</td><td>M</td><td>T</td><td>W</td><td>T</td><td>F</td><td>S</td></tr><tr><td></td><td></td><td>1</td><td>2</td><td>3</td><td>4</td><td>5</td></tr><tr><td>6</td><td>7</td><td>8</td><td>9</td><td>10</td><td>11</td><td>12</td></tr><tr><td>13</td><td>14</td><td>15</td><td>16</td><td>17</td><td>18</td><td>19</td></tr><tr><td>20</td><td>21</td><td>22</td><td>23</td><td>24</td><td>25</td><td>26</td></tr><tr><td>27</td><td>28</td><td>29</td><td>30</td><td></td><td></td><td></td></tr></table>	S	M	T	W	T	F	S			1	2	3	4	5	6	7	8	9	10	11	12	13	14	15	16	17	18	19	20	21	22	23	24	25	26	27	28	29	30			
S	M	T	W	T	F	S																																																																																				
				1	2	3																																																																																				
4	5	6	7	8	9	10																																																																																				
11	12	13	14	15	16	17																																																																																				
18	19	20	21	22	23	24																																																																																				
25	26	27	28	29	30																																																																																					
S	M	T	W	T	F	S																																																																																				
		1	2	3	4	5																																																																																				
6	7	8	9	10	11	12																																																																																				
13	14	15	16	17	18	19																																																																																				
20	21	22	23	24	25	26																																																																																				
27	28	29	30																																																																																							
2	3 <div>Hamlet Day Week</div>	4	5	6	7	8																																																																																				
9 <div>Mother's Day</div>	10	11	12	13	14	15																																																																																				
16	17	18	19	20	21	22																																																																																				
23	24 <div>Victoria Day</div>	25	26	27	28	29																																																																																				
30	31																																																																																									



Dancing Sandhill Crane

Claudio Bianchini

June | $\nabla\sigma$ 2010

Baker Lake Harvest Study

Sunday ᑭᐱᑕᐃᑦ		Monday ᑭᐱᑕᐃᑦᐅᓂᑭᑭᐅ	Tuesday ᐅᐅᑭᐃᑦᐱᑦᑭᐅ ᑭᐅᑦᑭᐅ	Wednesday ᐱᑦᓴᓴᐃᑦᐃᑦ	Thursday ᑭᐃᑕᑕᑦ	Friday ᑕᑦᑕᑕᑦ	Saturday ᑭᑦᐅᐃᐅᑦᐱᑦᑭᐅ																																																																																																	
		1	2	3	4	5																																																																																																		
6	7	8	9	10	11	12																																																																																																		
13	14	15	16	17	18	19																																																																																																		
20	21	22	23	24	25	26																																																																																																		
Father's Day	National Aboriginal Day First Day of Summer																																																																																																							
27	28	29	30	<div>May 2010</div> <table><tr><td>S</td><td>M</td><td>T</td><td>W</td><td>T</td><td>F</td><td>S</td></tr><tr><td></td><td></td><td></td><td></td><td></td><td></td><td>1</td></tr><tr><td>2</td><td>3</td><td>4</td><td>5</td><td>6</td><td>7</td><td>8</td></tr><tr><td>9</td><td>10</td><td>11</td><td>12</td><td>13</td><td>14</td><td>15</td></tr><tr><td>16</td><td>17</td><td>18</td><td>19</td><td>20</td><td>21</td><td>22</td></tr><tr><td>23</td><td>24</td><td>25</td><td>26</td><td>27</td><td>28</td><td>29</td></tr><tr><td>30</td><td>31</td><td></td><td></td><td></td><td></td><td></td></tr></table> <div>July 2010</div> <table><tr><td>S</td><td>M</td><td>T</td><td>W</td><td>T</td><td>F</td><td>S</td></tr><tr><td></td><td></td><td></td><td></td><td></td><td>1</td><td>2</td></tr><tr><td>3</td><td>4</td><td>5</td><td>6</td><td>7</td><td>8</td><td>9</td></tr><tr><td>10</td><td>11</td><td>12</td><td>13</td><td>14</td><td>15</td><td>16</td></tr><tr><td>17</td><td>18</td><td>19</td><td>20</td><td>21</td><td>22</td><td>23</td></tr><tr><td>24</td><td>25</td><td>26</td><td>27</td><td>28</td><td>29</td><td>30</td></tr><tr><td>31</td><td></td><td></td><td></td><td></td><td></td><td></td></tr></table>			S	M	T	W	T	F	S							1	2	3	4	5	6	7	8	9	10	11	12	13	14	15	16	17	18	19	20	21	22	23	24	25	26	27	28	29	30	31						S	M	T	W	T	F	S						1	2	3	4	5	6	7	8	9	10	11	12	13	14	15	16	17	18	19	20	21	22	23	24	25	26	27	28	29	30	31						
S	M	T	W	T	F	S																																																																																																		
						1																																																																																																		
2	3	4	5	6	7	8																																																																																																		
9	10	11	12	13	14	15																																																																																																		
16	17	18	19	20	21	22																																																																																																		
23	24	25	26	27	28	29																																																																																																		
30	31																																																																																																							
S	M	T	W	T	F	S																																																																																																		
					1	2																																																																																																		
3	4	5	6	7	8	9																																																																																																		
10	11	12	13	14	15	16																																																																																																		
17	18	19	20	21	22	23																																																																																																		
24	25	26	27	28	29	30																																																																																																		
31																																																																																																								



Caribou Calf

Shannon McFadyen

July | ᐱᓕᓴ 2010

Baker Lake Harvest Study
ᐱᓕᓴ ᐱᓕᓴ ᐱᓕᓴ ᐱᓕᓴ ᐱᓕᓴ

Sunday ᐱᓕᓴ	Monday ᐱᓕᓴᐱᓕᓴᐱᓕᓴᐱᓕᓴ	Tuesday ᐱᓕᓴᐱᓕᓴᐱᓕᓴᐱᓕᓴ	Wednesday ᐱᓕᓴᐱᓕᓴᐱᓕᓴ	Thursday ᐱᓕᓴᐱᓕᓴᐱᓕᓴ	Friday ᐱᓕᓴᐱᓕᓴᐱᓕᓴ	Saturday ᐱᓕᓴᐱᓕᓴᐱᓕᓴᐱᓕᓴ
June 2010 S M T W T F S 1 2 3 4 5 6 7 8 9 10 11 12 13 14 15 16 17 18 19 20 21 22 23 24 25 26 27 28 29 30	August 2010 S M T W T F S 1 2 3 4 5 6 7 8 9 10 11 12 13 14 15 16 17 18 19 20 21 22 23 24 25 26 27 28 29 30 31			1 _____ _____ _____ Canada Day	2 _____ _____ _____ _____ Nunavut Day	3 _____ _____ _____ _____ _____ _____
4 _____ _____ _____ _____ _____	5 _____ _____ _____ _____ _____	6 _____ _____ _____ _____ _____	7 _____ _____ _____ _____ _____	8 _____ _____ _____ _____ _____	9 _____ _____ _____ _____ _____	10 _____ _____ _____ _____ _____
11 _____ _____ _____ _____ _____	12 _____ _____ _____ _____ _____	13 _____ _____ _____ _____ _____	14 _____ _____ _____ _____ _____	15 _____ _____ _____ _____ _____	16 _____ _____ _____ _____ _____	17 _____ _____ _____ _____ _____
18 _____ _____ _____ _____ _____	19 _____ _____ _____ _____ _____	20 _____ _____ _____ _____ _____	21 _____ _____ _____ _____ _____	22 _____ _____ _____ _____ _____	23 _____ _____ _____ _____ _____	24 _____ _____ _____ _____ _____
25 _____ _____ _____ _____ _____	26 _____ _____ _____ _____ _____	27 _____ _____ _____ _____ _____	28 _____ _____ _____ _____ _____	29 _____ _____ _____ _____ _____	30 _____ _____ _____ _____ _____	31 _____ _____ _____ _____ _____



Muskox Bull

Damian Power

August | ♠ 2010

Baker Lake Harvest Study

Sunday ከሐርሰር	Monday ከሐርሰር፡ጉሪባዕ	Tuesday ጋህ፡ፈፃሚ ፡ፆጎርዕዓ	Wednesday ለፄሊፋሳር	Thursday ፆርሊር	Friday ርርሊር	Saturday ሙቤልጋዕዕፃህ																																																																																									
1	2 Civic Holiday	3	4	5	6	7																																																																																									
8	9	10	11	12	13	14																																																																																									
15	16	17	18	19	20	21																																																																																									
22	23	24	25	26	27	28																																																																																									
29	30	31	<div><div>July 2010</div><table><tr><td>S</td><td>M</td><td>T</td><td>W</td><td>T</td><td>F</td><td>S</td></tr><tr><td></td><td></td><td></td><td></td><td>1</td><td>2</td><td>3</td></tr><tr><td>4</td><td>5</td><td>6</td><td>7</td><td>8</td><td>9</td><td>10</td></tr><tr><td>11</td><td>12</td><td>13</td><td>14</td><td>15</td><td>16</td><td>17</td></tr><tr><td>18</td><td>19</td><td>20</td><td>21</td><td>22</td><td>23</td><td>24</td></tr><tr><td>25</td><td>26</td><td>27</td><td>28</td><td>29</td><td>30</td><td>31</td></tr></table><div>September 2010</div><table><tr><td>S</td><td>M</td><td>T</td><td>W</td><td>T</td><td>F</td><td>S</td></tr><tr><td></td><td></td><td></td><td></td><td>1</td><td>2</td><td>3</td><td>4</td></tr><tr><td>5</td><td>6</td><td>7</td><td>8</td><td>9</td><td>10</td><td>11</td><td></td></tr><tr><td>12</td><td>13</td><td>14</td><td>15</td><td>16</td><td>17</td><td>18</td><td></td></tr><tr><td>19</td><td>20</td><td>21</td><td>22</td><td>23</td><td>24</td><td>25</td><td></td></tr><tr><td>26</td><td>27</td><td>28</td><td>29</td><td>30</td><td></td><td></td><td></td></tr></table></div>				S	M	T	W	T	F	S					1	2	3	4	5	6	7	8	9	10	11	12	13	14	15	16	17	18	19	20	21	22	23	24	25	26	27	28	29	30	31	S	M	T	W	T	F	S					1	2	3	4	5	6	7	8	9	10	11		12	13	14	15	16	17	18		19	20	21	22	23	24	25		26	27	28	29	30			
S	M	T	W	T	F	S																																																																																									
				1	2	3																																																																																									
4	5	6	7	8	9	10																																																																																									
11	12	13	14	15	16	17																																																																																									
18	19	20	21	22	23	24																																																																																									
25	26	27	28	29	30	31																																																																																									
S	M	T	W	T	F	S																																																																																									
				1	2	3	4																																																																																								
5	6	7	8	9	10	11																																																																																									
12	13	14	15	16	17	18																																																																																									
19	20	21	22	23	24	25																																																																																									
26	27	28	29	30																																																																																											



Caribou Bulls in Fall

Barry Girard

September | ᑭᑎᐱᑎ 2010

Baker Lake Harvest Study
ᑭᑎᐱᑎ ᑭᑎᐱᑎ ᑭᑎᐱᑎ ᑭᑎᐱᑎ

Sunday ᑭᑎᐱᑎ	Monday ᑭᑎᐱᑎᑭᑎᑭᑎ	Tuesday ᑭᑎᐱᑎᑭᑎ ᑭᑎᐱᑎ	Wednesday ᐱᑎᑭᑎᑭᑎ	Thursday ᑭᑎᐱᑎ	Friday ᑭᑎᐱᑎ	Saturday ᑭᑎᐱᑎᑭᑎ
August 2010 S M T W T F S 1 2 3 4 5 6 7 8 9 10 11 12 13 14 15 16 17 18 19 20 21 22 23 24 25 26 27 28 29 30 31	October 2010 S M T W T F S 1 2 3 4 5 6 7 8 9 10 11 12 13 14 15 16 17 18 19 20 21 22 23 24 25 26 27 28 29 30 31		1 <hr/> <hr/> <hr/> <hr/> <hr/>	2 <hr/> <hr/> <hr/> <hr/> <hr/>	3 <hr/> <hr/> <hr/> <hr/> <hr/>	4 <hr/> <hr/> <hr/> <hr/> <hr/>
5 <hr/> <hr/> <hr/> <hr/> <hr/>	6 <hr/> <hr/> <hr/> <hr/> <hr/> Labour Day	7 <hr/> <hr/> <hr/> <hr/> <hr/>	8 <hr/> <hr/> <hr/> <hr/> <hr/>	9 <hr/> <hr/> <hr/> <hr/> <hr/>	10 <hr/> <hr/> <hr/> <hr/> <hr/>	11 <hr/> <hr/> <hr/> <hr/> <hr/>
12 <hr/> <hr/> <hr/> <hr/> <hr/> Grandparent's Day	13 <hr/> <hr/> <hr/> <hr/> <hr/>	14 <hr/> <hr/> <hr/> <hr/> <hr/>	15 <hr/> <hr/> <hr/> <hr/> <hr/>	16 <hr/> <hr/> <hr/> <hr/> <hr/>	17 <hr/> <hr/> <hr/> <hr/> <hr/>	18 <hr/> <hr/> <hr/> <hr/> <hr/>
19 <hr/> <hr/> <hr/> <hr/> <hr/> Terry Fox Run	20 <hr/> <hr/> <hr/> <hr/> <hr/>	21 <hr/> <hr/> <hr/> <hr/> <hr/>	22 <hr/> <hr/> <hr/> <hr/> <hr/>	23 <hr/> <hr/> <hr/> <hr/> <hr/> First Day of Autumn	24 <hr/> <hr/> <hr/> <hr/> <hr/>	25 <hr/> <hr/> <hr/> <hr/> <hr/>
26 <hr/> <hr/> <hr/> <hr/> <hr/>	27 <hr/> <hr/> <hr/> <hr/> <hr/>	28 <hr/> <hr/> <hr/> <hr/> <hr/>	29 <hr/> <hr/> <hr/> <hr/> <hr/>	30 <hr/> <hr/> <hr/> <hr/> <hr/>		



Peregrine Falcon

Chris Lee

October | 2010

Baker Lake Harvest Study
ᖃᓚᓂᓂᓐᓂᓐ ᓂᓐᓂᓐᓂᓐᓂᓐ ᖃᓂᓂᓐᓂᓐᓂᓐ

Sunday ᑭᐱᓕᐃᓪ	Monday ᑭᐱᓕᐃᓪᔨᓂᑦᑭᖅᔫᖅ	Tuesday ᑐᖅᓯᓪᐋᖅᐱᖅᓂᖅ ᓯᖅᕿᓪᓇᖅᔫᖅ	Wednesday ᐱᖅᓴᓂᓯᐋᓪᓇᓪ	Thursday ᓯᓪᓕᓂᓪᓇᓪ	Friday ᓕᓪᓇᓪᓇᓪ	Saturday ᓂᖅᓴᐃᑐᖅᐱᖅᓂᖅ
September 2010						
S	M	T	W	T	F	S
			1	2	3	4
5	6	7	8	9	10	11
12	13	14	15	16	17	18
19	20	21	22	23	24	25
26	27	28	29	30		
3	4	5	6	7	8	9
10	11	12	13	14	15	16
17	18	19	20	21	22	23
24	25	26	27	28	29	30
31						
Halloween						



Migrating Caribou Bulls

Claudio Bianchini

November | 2010

Baker Lake Harvest Study

Sunday ᑭᐱᑕᐱᑦ	Monday ᑭᐱᑕᐱᑦᐅᓚᓂᑭᑭᑦ	Tuesday ᐅᑦᓯᐱᑦᐱᑦᑭᑦ ᓯᑦᐅᑦᑭᑦ	Wednesday ᐱᑦᓚᓚᐱᑦ	Thursday ᓯᑕᓚᑦ	Friday ᑕᑦᓚᑦ	Saturday ᓂᑦᑭᐱᐅᑦᐱᑦᑭᑦ																																																																																											
	1	2	3	4	5	6																																																																																											
7	8	9	10	11	12	13																																																																																											
Daylight Savings Time Ends				Remembrance Day																																																																																													
14	15	16	17	18	19	20																																																																																											
21	22	23	24	25	26	27																																																																																											
28	29	30	<div>October 2010</div> <table><tr><td>S</td><td>M</td><td>T</td><td>W</td><td>T</td><td>F</td><td>S</td></tr><tr><td></td><td></td><td></td><td></td><td></td><td>1</td><td>2</td></tr><tr><td>3</td><td>4</td><td>5</td><td>6</td><td>7</td><td>8</td><td>9</td></tr><tr><td>10</td><td>11</td><td>12</td><td>13</td><td>14</td><td>15</td><td>16</td></tr><tr><td>17</td><td>18</td><td>19</td><td>20</td><td>21</td><td>22</td><td>23</td></tr><tr><td>24</td><td>25</td><td>26</td><td>27</td><td>28</td><td>29</td><td>30</td></tr><tr><td>31</td><td></td><td></td><td></td><td></td><td></td><td></td></tr></table> <div>December 2010</div> <table><tr><td>S</td><td>M</td><td>T</td><td>W</td><td>T</td><td>F</td><td>S</td></tr><tr><td></td><td></td><td></td><td></td><td>1</td><td>2</td><td>3</td></tr><tr><td>4</td><td>5</td><td>6</td><td>7</td><td>8</td><td>9</td><td>10</td></tr><tr><td>11</td><td>12</td><td>13</td><td>14</td><td>15</td><td>16</td><td>17</td></tr><tr><td>18</td><td>19</td><td>20</td><td>21</td><td>22</td><td>23</td><td>24</td></tr><tr><td>25</td><td>26</td><td>27</td><td>28</td><td>29</td><td>30</td><td>31</td></tr></table>				S	M	T	W	T	F	S						1	2	3	4	5	6	7	8	9	10	11	12	13	14	15	16	17	18	19	20	21	22	23	24	25	26	27	28	29	30	31							S	M	T	W	T	F	S					1	2	3	4	5	6	7	8	9	10	11	12	13	14	15	16	17	18	19	20	21	22	23	24	25	26	27	28	29	30	31
S	M	T	W	T	F	S																																																																																											
					1	2																																																																																											
3	4	5	6	7	8	9																																																																																											
10	11	12	13	14	15	16																																																																																											
17	18	19	20	21	22	23																																																																																											
24	25	26	27	28	29	30																																																																																											
31																																																																																																	
S	M	T	W	T	F	S																																																																																											
				1	2	3																																																																																											
4	5	6	7	8	9	10																																																																																											
11	12	13	14	15	16	17																																																																																											
18	19	20	21	22	23	24																																																																																											
25	26	27	28	29	30	31																																																																																											



December | $\cap \rho \wedge \rho$ 2010

Baker Lake Harvest Study
ᖃᓚᓂᓂᓐᓂᓐ ᓂᓐᓂᓐᓂᓐᓂᓐ ᖃᓂᓂᓐᓂᓐᓂᓐ

Sunday ᑭᐱᑕᐃᑦ	Monday ᑭᐱᑕᐃᑦᐅᓂᑭᑭᑲ	Tuesday ᐅᑲᑭᐃᑦᐱᑦᑲ ᑭᑲᑦᑲ	Wednesday ᐱᑦᓴᓴᐃᑕ	Thursday ᑭᑕᓴᑕ	Friday ᑕᑦᓴᑕ	Saturday ᑭᑦᑲᐃᐅᑦᐱᑦᑲ
November 2010	January 2011		1	2	3	4
S M T W T F S	S M T W T F S					
1 2 3 4 5 6						
7 8 9 10 11 12 13	2 3 4 5 6 7 8					
14 15 16 17 18 19 20	9 10 11 12 13 14 15					
21 22 23 24 25 26 27	16 17 18 19 20 21 22					
28 29 30	23 24 25 26 27 28 29					
	30 31					
5	6	7	8	9	10	11
12	13	14	15	16	17	18
19	20	21	22	23	24	25
26	27	28	29	30	31	
Boxing Day					Please return the calendar to the Agnico-Eagle office for entry into the participant draw.	

Caribou Bull

ᑕᓴᓂᑦᑕᑦ



Damian Power



Damian Power

Caribou Cows

ᑕᓴᓂᑦᑕᑦ



Pensicola Junior College



Timduru

Wolverine

ᑦᑕᑦᑕᑦ

Muskox Bull

ᑕᓴᓂᑦᑕᑦ



Damian Power



Damian Power

Muskox Cow & Calf

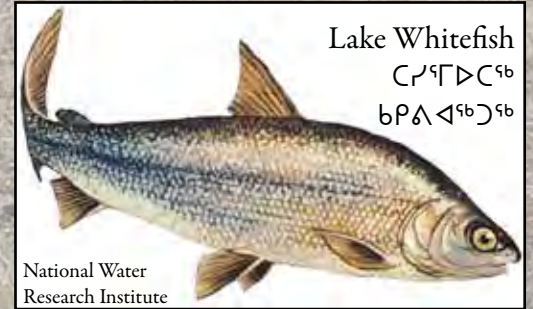
ᑕᓴᓂᑦᑕᑦ ᑕᓴᓂᑦᑕᑦ ᑕᓴᓂᑦᑕᑦ



Lake Whitefish

ᑕᓴᓂᑦᑕᑦ

ᑕᓴᓂᑦᑕᑦ



National Water
Research Institute

Arctic Char - Male & Female

ᑕᓴᓂᑦᑕᑦ



Randy Baker

Arctic Grayling

ᑕᓴᓂᑦᑕᑦ



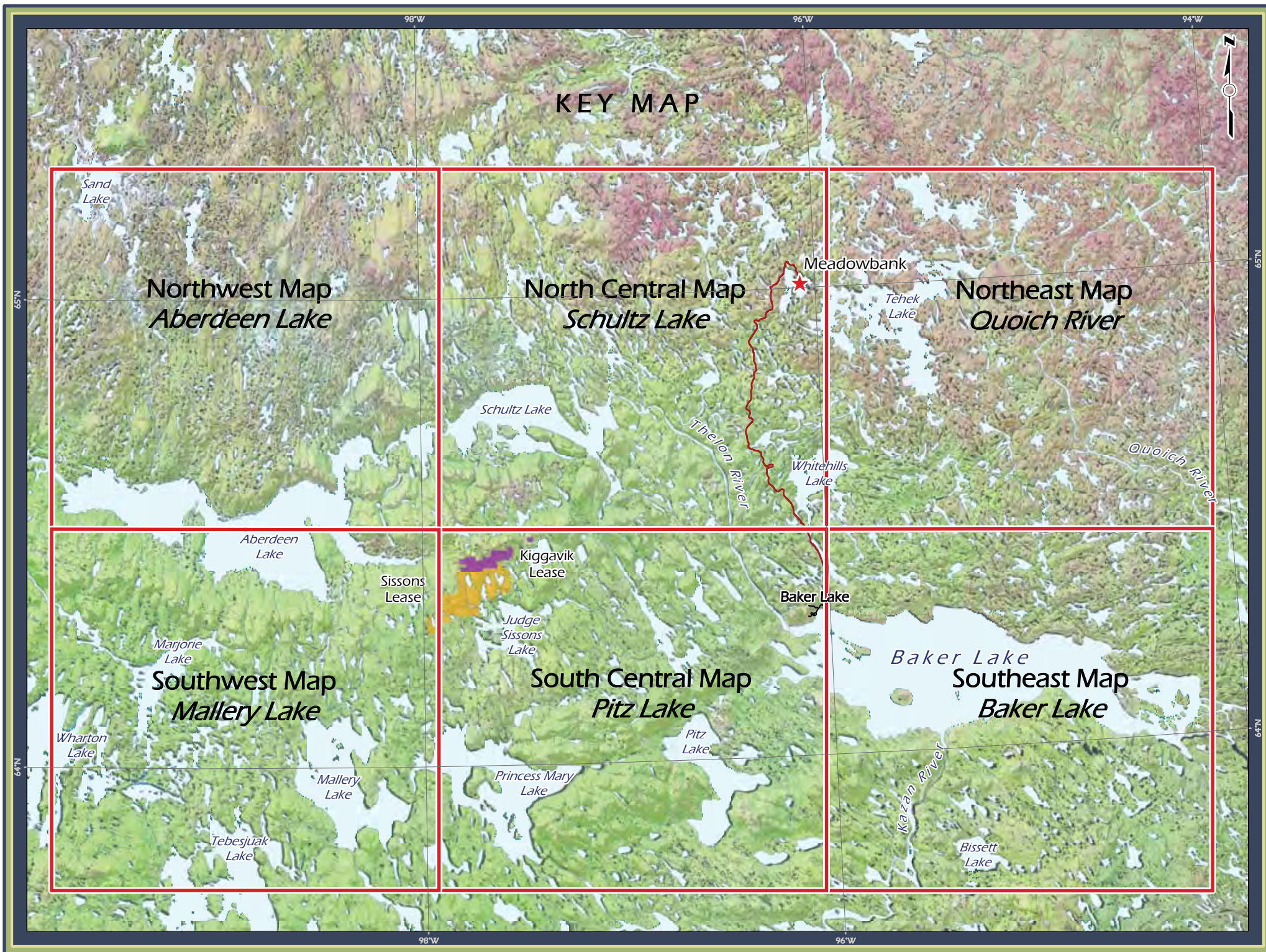
Randy Baker

Lake Trout

ᑕᓴᓂᑦᑕᑦ







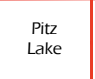

Martin Gebauer

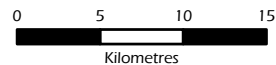


Baker Lake Harvest Study

Northwest Map Aberdeen Lake

Key Map

 Aberdeen Lake	 Schultz Lake	 Ouoich River
 Mallery Lake	 Pitz Lake	 Baker Lake



Projection: UTM Zone 14 NAD83

Data Sources:
Natural Resources Canada
GeoBase®
National Topographic Database
Government of Nunavut
Agnico-Eagle Mines Inc.
Areva Resources Canada Inc.
Caslys Consulting Ltd.

Prepared for:



By:
Caslys Consulting Ltd.

