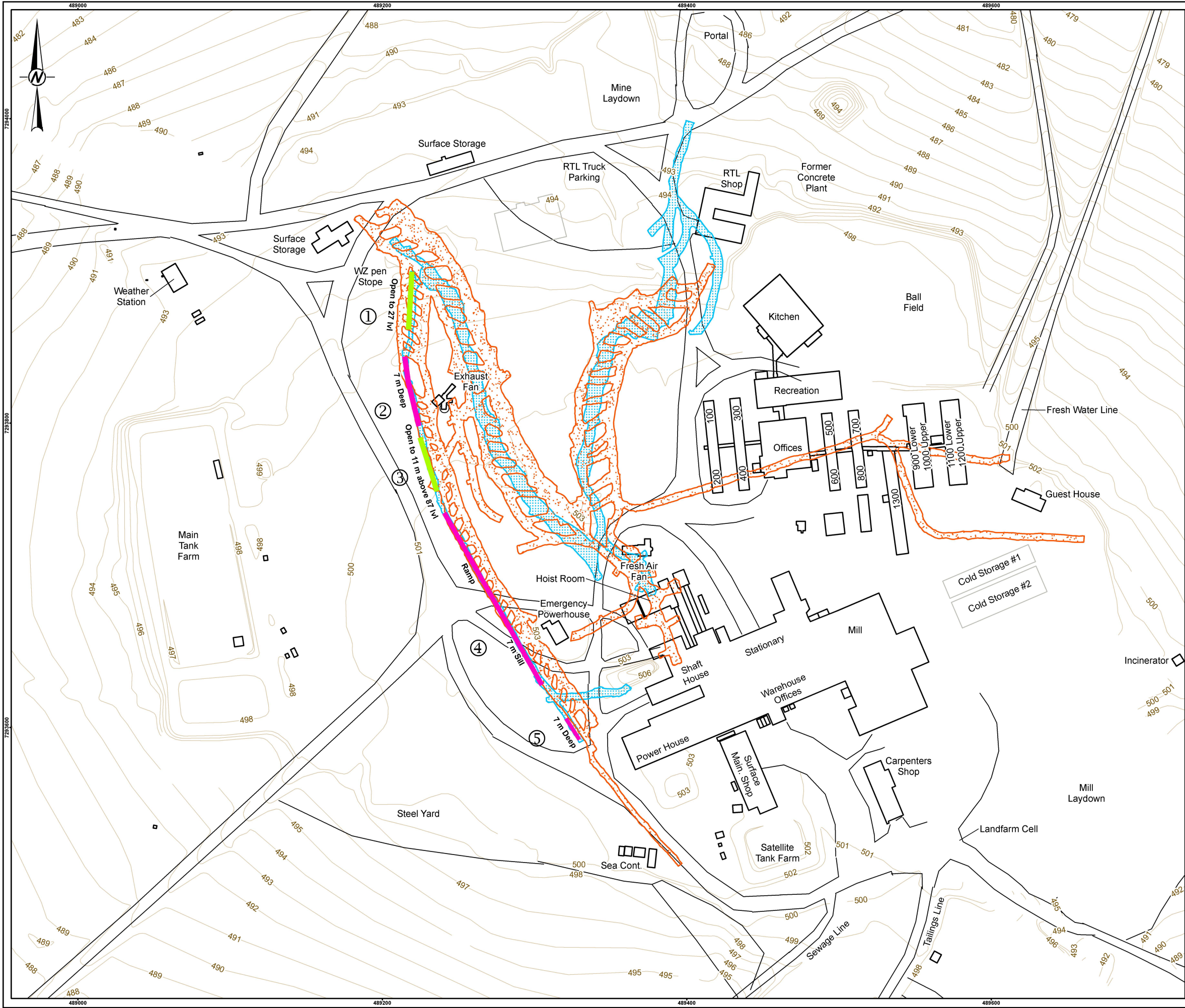


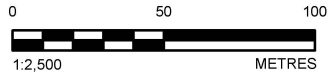
PATH: I:\2017\789942\Maping\WCD\General\789942_3000_Fig06_UndergroundDisposalArea_RevA.mxd PRINTED ON: 2018-03-15 AT 9:33:36 AM



LEGEND

- ① WZ UNDERGROUND DISPOSAL KEY CROSS-SECTION LOCATION
- CONTOUR
- INFRASTRUCTURE FOOTPRINT
- 27 LEVEL ORE DRIFT PROJECTION
- 87 LEVEL ACCESS DRIFT PROJECTION
- WZ CROWN PILLAR PIT
- WZ OPEN STOPE

DRAFT



REFERENCE(S)
UNDERGROUND DISPOSAL AND FACILITY DATA OBTAINED FROM NORWEST CORP., JANUARY 26, 2018. HYDROGRAPHY AND TOPOGRAPHY DATA OBTAINED FROM GEOGRATIS © DEPARTMENT OF NATURAL RESOURCES CANADA. ALL RIGHTS RESERVED. FOOTPRINT OBTAINED FROM CLIENT.
DATUM: NAD83 PROJECTION: UTM ZONE 12

CLIENT
MANDALAY RESOURCES CORPORATION

PROJECT
LUPIN MINE CLOSURE

TITLE
UNDERGROUND MINE WORKING PLAN

LUPIN MINES INCORPORATED	YYYY-MM-DD	2018-01-25
	DESIGNED	NORWEST CORP.
	PREPARED	AA
	REVIEWED	
	APPROVED	

PROJECT NO.	CONTROL	REV.	FIGURE
1789942	3000	A	6

IF THIS MEASUREMENT DOES NOT MATCH WHAT IS SHOWN, THE SHEET SIZE HAS BEEN MODIFIED FROM: ANSI B 25mm