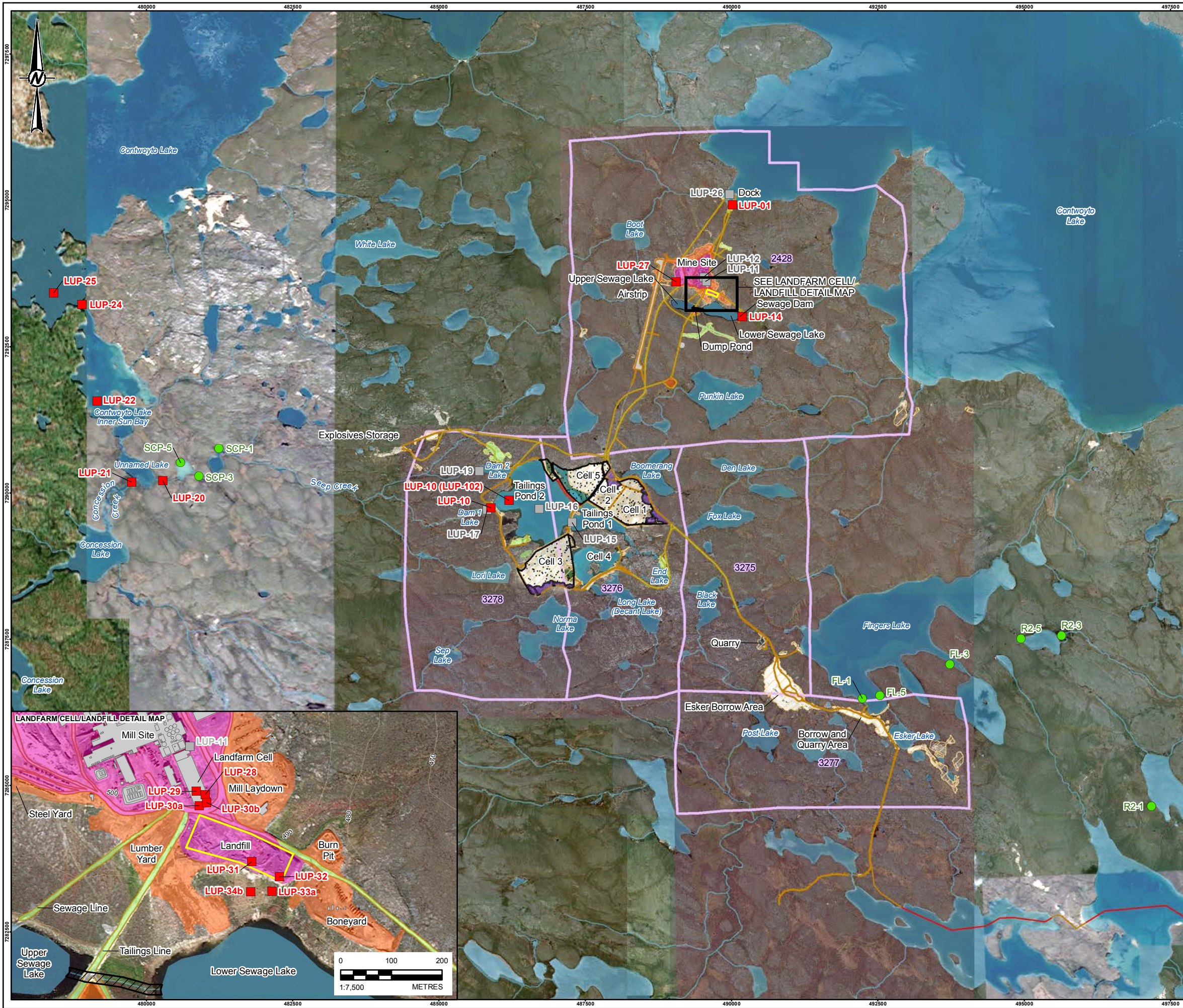


PATH: \\gpc\calm\GIS\env\2017\1789942\Maping\MD\General\1789942\_3000\_Fig12\_PostClosureMonitoringLocations\_RevA.mxd PRINTED ON: 2018-03-26 AT: 3:40:43 PM



**LEGEND**

- EEM MONITORING LOCATION
- IARP WATER SAMPLING AND DISCHARGE LOCATION
- INACTIVE WATER SAMPLING LOCATION
- ROAD
- WINTER ROAD
- WATERCOURSE
- DISTURBANCE FOOTPRINT
- MINERAL LEASE BOUNDARY
- INFRASTRUCTURE FOOTPRINT
- LANDFILL
- APPROXIMATE TUNDRA AREA
- APPROXIMATE 2017 DAM REPAIR AND MAINTENANCE WORK
- CHANNEL EXCAVATION AND CLOSURE SPILLWAY
- REHABILITATED DISTURBED AREA
- TAILINGS COVER
- WASTE ROCK COVERED
- WASTE ROCK REMOVED
- WATERBODY

**DRAFT**

024KILOMETRES1:65,000

**NOTE(S)**

LANDFARM MONITORING POINTS (LUP-28, LUP-29, LUP-30A, AND LUP-30B) AND LANDFILL MONITORING POINTS (LUP-31, LUP-32, LUP-33A, AND LUP-34B) ARE APPROXIMATE LOCATIONS.

**REFERENCE(S)**

HYDROGRAPHY, TOPOGRAPHY, AND TRANSPORTATION DATA OBTAINED FROM GEOGRATIS © DEPARTMENT OF NATURAL RESOURCES CANADA. ALL RIGHTS RESERVED. FOOTPRINT OBTAINED FROM CLIENT. IARP MONITORING LOCATIONS DIGITIZED FROM FIGURE OBTAINED FROM NORWEST CORP., JANUARY 18, 2019. IMAGE OBTAINED FROM GOOGLE EARTH © 2017 GOOGLE INC. USED WITH PERMISSION. GOOGLE AND GOOGLE LOGO ARE REGISTERED TRADEMARKS OF GOOGLE INC. IMAGERY DATE: SEPTEMBER 11, 2017, JANUARY 19, 2018, AND JANUARY 24, 2018. GOOGLE EARTH IMAGE IS NOT TO SCALE. IMAGERY COPYRIGHT © 19990115 ESRI AND ITS LICENSORS. SOURCE: EARTHSTAR GEOGRAPHICS. USED UNDER LICENSE, ALL RIGHTS RESERVED. DATUM: NAD83 PROJECTION: UTM ZONE 12

**CLIENT**

MANDALAY RESOURCES CORPORATION

**PROJECT**

LUPIN MINE CLOSURE

**TITLE**

POST-CLOSURE MONITORING PROGRAM STATIONS

YYYY-MM-DD	2018-03-28
DESIGNED	NC
PREPARED	AA
REVIEWED	
APPROVED	

LUPIN MINES INCORPORATED			
PROJECT NO.	CONTROL	REV.	FIGURE
1789942	3000	A	12

IF THIS MEASUREMENT DOES NOT MATCH WHAT IS SHOWN, THE SHEET SIZE HAS BEEN MODIFIED FROM: ANSI B 25mm