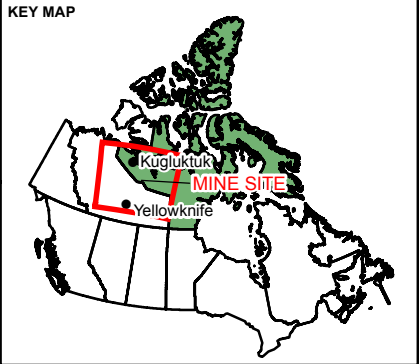
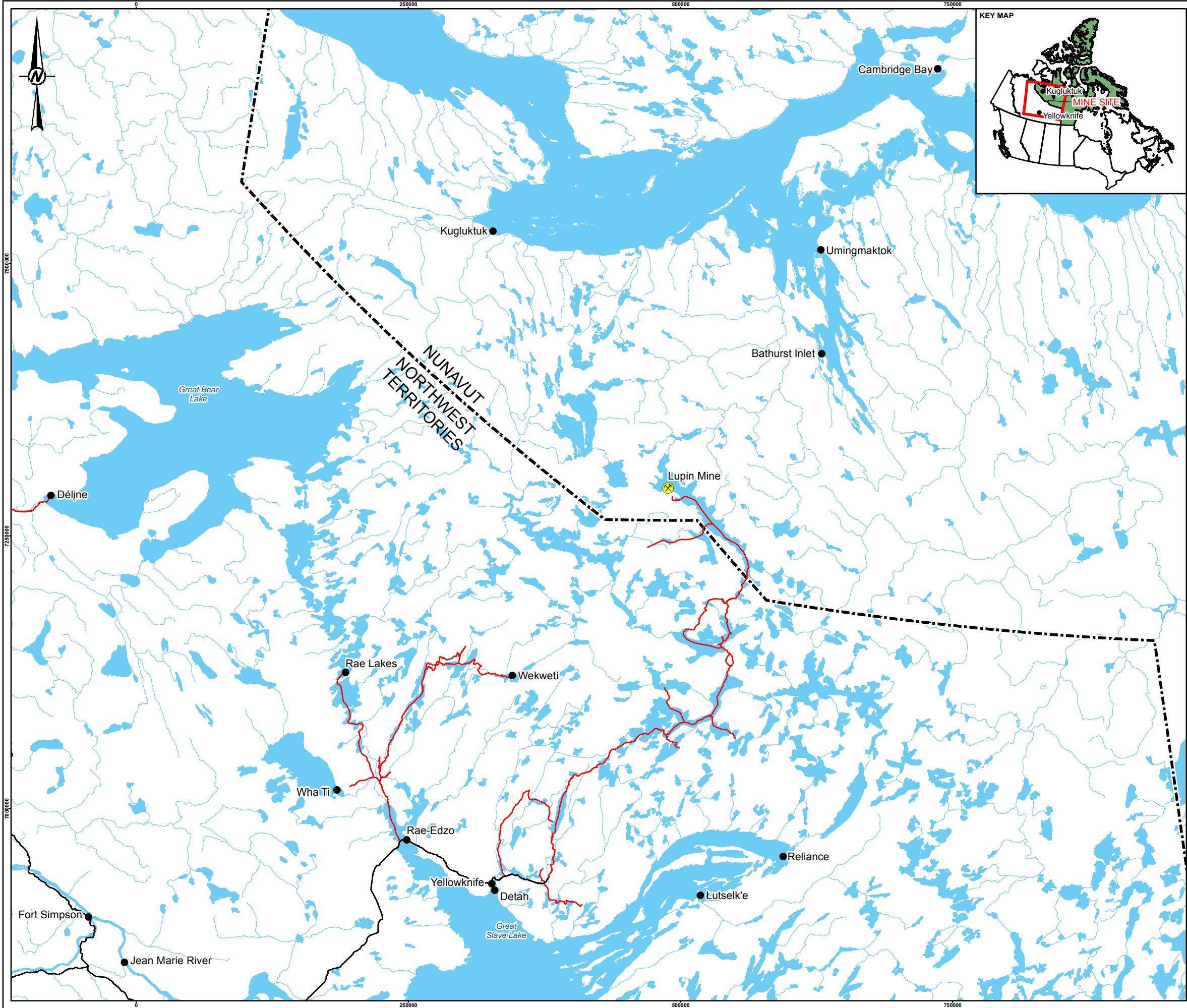
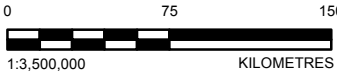


## Figures



- LEGEND**
- LUPIN MINE
  - POPULATED PLACE
  - HIGHWAY
  - WINTER ROAD
  - WATERCOURSE
  - TERRITORIAL/PROVINCIAL BOUNDARY
  - WATERBODY



**REFERENCE(S)**  
HYDROGRAPHY, POPULATED PLACE, TERRITORIAL BOUNDARIES, AND TRANSPORTATION DATA OBTAINED FROM GEOGRATIS © DEPARTMENT OF NATURAL RESOURCES CANADA. ALL RIGHTS RESERVED.  
DATUM: NAD83 PROJECTION: UTM ZONE 12

CLIENT  
MANDALAY RESOURCES CORPORATION

PROJECT  
LUPIN MINE CLOSURE - HUMAN HEALTH AND ECOLOGICAL RISK ASSESSMENT

TITLE  
LOCATION PLAN



YYYY-MM-DD 2018-01-25

DESIGNED SG

<sup>2</sup>REPAIRED MM

REVIEWED SG

APPROVED TMG

PROJECT NO. 19120487

CONTROL 5000

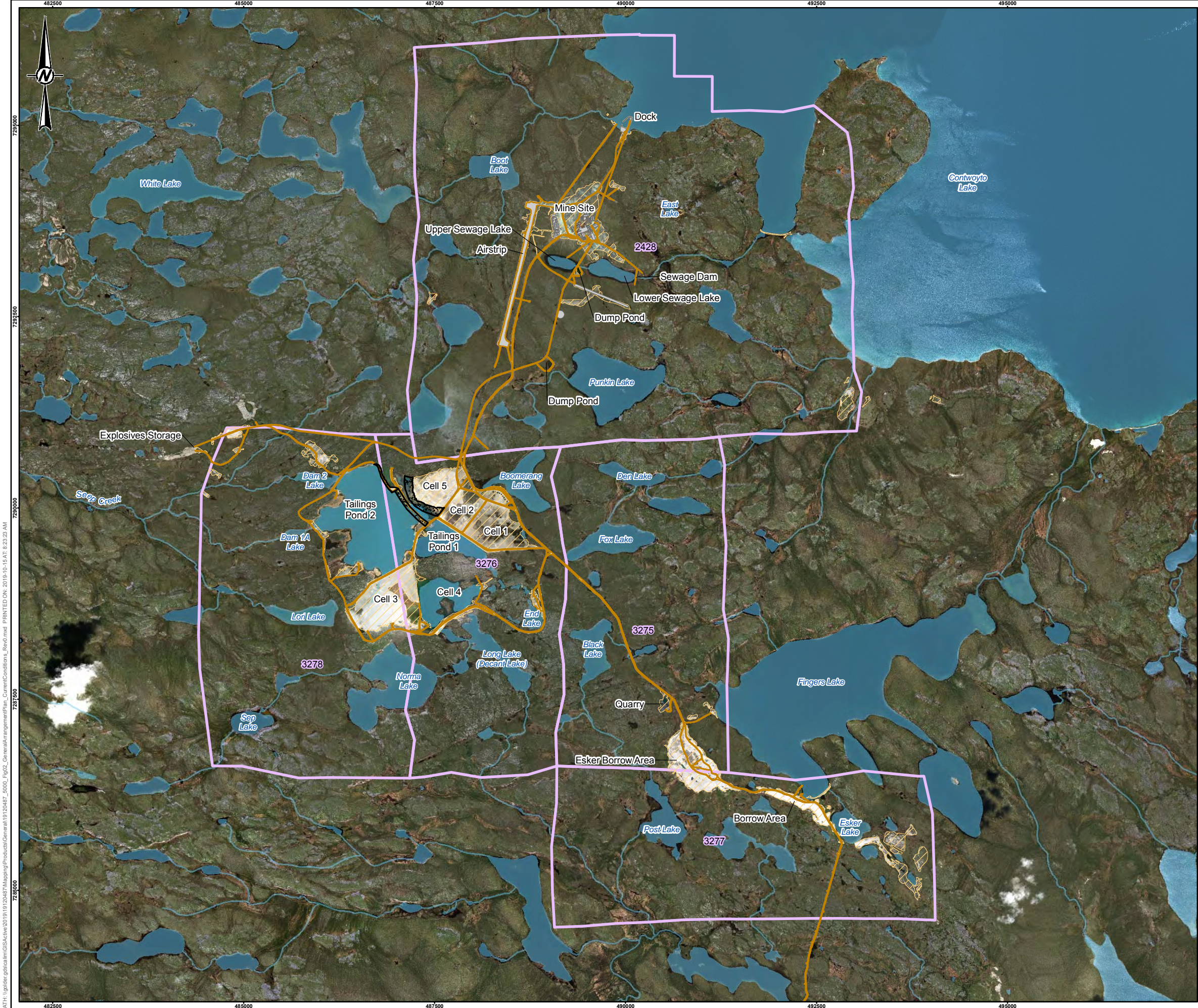
REV. 0

FIGURE 1

PATH: \\golder\gis\workspace\19120487\Maping\Products\General\19120487\_5000\_Fig01\_LocationPlan\_Rae0.mxd PRINTED ON: 2019-10-15 AT 7:42:36 AM

IF THIS MEASUREMENT DOES NOT MATCH WHAT IS SHOWN, THE SHEET SIZE HAS BEEN MODIFIED FROM: ANSI B





**LEGEND**

- ROAD
- WATERCOURSE
- APPROXIMATE 2017 RECLAMATION WORK
- DISTURBANCE FOOTPRINT
- INFRASTRUCTURE FOOTPRINT
- MINERAL LEASE BOUNDARY
- WATERBODY

**REFERENCE(S)**

HYDROGRAPHY, TOPOGRAPHY, AND TRANSPORTATION DATA OBTAINED FROM GEOGRATIS © DEPARTMENT OF NATURAL RESOURCES CANADA. ALL RIGHTS RESERVED. FOOTPRINT OBTAINED FROM CLIENT. IMAGE OBTAINED FROM GOOGLE EARTH © 2017 GOOGLE INC. USED WITH PERMISSION. GOOGLE AND GOOGLE LOGO ARE REGISTERED TRADEMARKS OF GOOGLE INC. IMAGERY DATE: SEPTEMBER 11, 2017, JANUARY 19, 2018, AND JANUARY 24, 2018. GOOGLE EARTH IMAGE IS NOT TO SCALE. DATUM: NAD83 PROJECTION: UTM ZONE 12

**CLIENT**

MANDALAY RESOURCES CORPORATION

**PROJECT**

LUPIN MINE CLOSURE - HUMAN HEALTH AND ECOLOGICAL RISK ASSESSMENT

**TITLE**

GENERAL ARRANGEMENT PLAN

YYYY-MM-DD	2019-10-15
DESIGNED	SG
*PREPARED	MM
REVIEWED	SG
APPROVED	TMG

PROJECT NO.	CONTROL	REV.	FIGURE
19120487	5000	0	2

PATH: \\golder\golder\GIS\Projects\19120487\Mapping\Products\General\19120487\_5000\_Fig02\_GeneralArrangementPlan\_CurrentConditions\_Rev0.mxd PRINTED ON: 2019-10-15 AT 8:23:23 AM

IF THIS MEASUREMENT DOES NOT MATCH WHAT IS SHOWN, THE SHEET SIZE HAS BEEN MODIFIED FROM: ANSI B





**LEGEND**

- CONTOUR
- WATERCOURSE
- ROAD
- DISTURBANCE FOOTPRINT
- INFRASTRUCTURE FOOTPRINT
- REHABILITATED DISTURBED AREA
- WATERBODY

0 250 500  
1:15,000 METRES

**REFERENCE(S)**  
HYDROGRAPHY AND TOPOGRAPHY DATA OBTAINED FROM GEOGRATIS © DEPARTMENT OF NATURAL RESOURCES CANADA. ALL RIGHTS RESERVED. FOOTPRINT OBTAINED FROM CLIENT. IMAGE CAPTURED AUGUST 21, 2012, OBTAINED FROM CLIENT. DATUM: NAD83 PROJECTION: UTM ZONE 12

CLIENT  
MANDALAY RESOURCES CORPORATION

PROJECT  
LUPIN MINE CLOSURE – HUMAN HEALTH AND ECOLOGICAL RISK ASSESSMENT

TITLE  
MINE AND MILL SITE AREA – CURRENT CONDITIONS

YYYY-MM-DD	2019-10-15
DESIGNED	SG
*REPAIRED	MM
REVIEWED	SG
APPROVED	TMG

PROJECT NO. 19120487  
CONTROL 5000  
REV. 0  
FIGURE 3





**LEGEND**

- CONTOUR
- FLOW DIRECTION
- ROAD
- WATERCOURSE
- CHANNEL EXCAVATION AND CLOSURE SPILLWAY
- DEMOLITION LANDFILL
- INFRASTRUCTURE FOOTPRINT
- LANDFILL
- REHABILITATED DISTURBED AREA
- WASTE ROCK COVERED
- WASTE ROCK REMOVED
- WATERBODY

0 250 500  
1:15,000 METRES

**REFERENCE(S)**  
HYDROGRAPHY AND TOPOGRAPHY DATA OBTAINED FROM GEOGRATIS © DEPARTMENT OF NATURAL RESOURCES CANADA. ALL RIGHTS RESERVED. FOOTPRINT OBTAINED FROM CLIENT. IMAGE CAPTURED AUGUST 21, 2012, OBTAINED FROM CLIENT. DATUM: NAD83 PROJECTION: UTM ZONE 12

CLIENT  
MANDALAY RESOURCES CORPORATION

PROJECT  
LUPIN MINE CLOSURE – HUMAN HEALTH AND ECOLOGICAL RISK ASSESSMENT

TITLE  
MINE AND MILL SITE AREA – POST-CLOSURE

YYYY-MM-DD	2019-10-04
DESIGNED	SG
PREPARED	JT
REVIEWED	SG
APPROVED	TMG

PROJECT NO.	CONTROL	REV.	FIGURE
19120487	5000	0	4

**GOLDER**

X:\19120487\GIS\19120487\_Mapping\Products\General\19120487\_5000\_Fig4\_PostClosureMineSite\_Rev0.mxd PRINTED ON: 2019-10-15 AT: 7:16:04 AM

IF THIS MEASUREMENT DOES NOT MATCH WHAT IS SHOWN, THE SHEET SIZE HAS BEEN MODIFIED FROM: ANSI B